



B●Unbound

Co-Navigator Handbook

Table of Contents

[What is B-Unbound?](#)

[Roles](#)

[Co-Navigators](#)

[Navigators](#)

[Junior Navigators](#)

[Supportive Adults](#)

[Co-Navigator Responsibilities](#)

[Important Links](#)

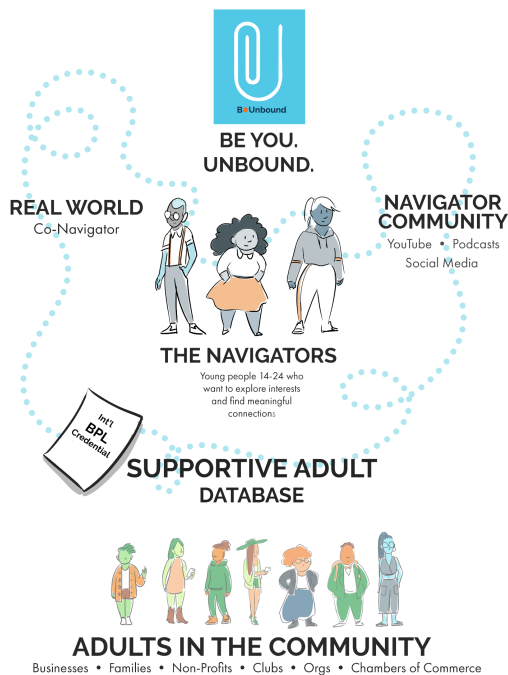
DRAFT



B•Unbound

Co-Navigator Handbook

What is B-Unbound?



B-Unbound is an initiative powered by Big Picture Learning in collaboration with Straight Up Impact.

B-Unbound is a community platform that connects Navigators (youth ages 14-24) with Supportive Adults and peers navigating their way through shared interests to discuss interests and exploration. It offers real-world engagement with adults and a virtual community of peers using podcasts, YouTube shows and more. It is youth-driven, adult-supported, and operates in parallel to school systems.

Roles

Co-Navigators

A community based B-Unbound trained adult, who acts in an advisory capacity connecting youth to others in the community and beyond.

Navigators

A **youth (ages 14-24)** who engages in interest exploration and meaningful relationships around getting better at things they love to do. This can be done through the Navigator Community with peers or Real World Learning with Supportive Adults.



B●Unbound

Co-Navigator Handbook

Junior Navigators

A **youth (ages 7-13)** who engages in interest exploration and meaningful relationships around getting better at things they love to do. This can be done through the Navigator Community with peers or Real World Learning with Supportive Adults

Supportive Adults

An adult (ages 25+) that voluntarily supports Navigators who share similar interests but have the added advantage of having already experienced the world. A Supportive Adult may be a known contact to the Co-Navigator, school, community, or within a Navigator's personal network or someone a Navigator and the Co-Navigator are meeting for the first time. Retired professionals and professional organizations are great resources to access.

Learn More about the [Supportive Adult](#) experience

Co-Navigator Responsibilities

Recruit Navigators

Some suggested steps for finding new Navigators are:

- ☐ Use the suggested [communications templates](#) provided by B-Unbound.
- ☐ Partner with other youth serving organizations in the community.
- ☐ Utilize a Youth Ambassador
- ☐ Connect Youth to Supportive Adults and Programs related to their interests.

Support Navigators

Some suggested steps for support new Navigators are:

- ☐ Welcome/Onboard Meeting with Navigator to determine interests
 - ☐ Set set goals and expectations. If needed, utilize [Interest Exploration Activities](#)
 - ☐ Activate RWL account and demo
 - ☐ Invite to Navigator Community (Discord: <https://b.link/BeYouDiscord>)
 - ☐ Set up a follow up meeting
- ☐ Ongoing Check Ins
 - ☐ Follow up on action items for last meeting
 - ☐ Encourage content creation for the Navigator Community
 - ☐ Connect Navigators to Appropriate Supportive Adults based around interests

Recruit Supportive Adults



Co-Navigator Handbook

Based on your Youth Navigators' interests, recruit Supportive Adults. Some suggested steps for finding new Supportive Adults are:

- ☐ Research local professionals and organizations who employ professionals in the field of interest. Be creative. It may be a challenge, for example, for a minor to secure a Supportive Adult working on a large construction job site, but a small local contractor would be willing and happy to participate. A large manufacturing plant may be hesitant to allow Navigators to work with heavy machinery, but local machine shops or auto repair shops are good places to try. There are also clubs and Maker Spaces with Supportive Adults and youth navigators doing work at both entry and very sophisticated levels.
- ☐ Request an informational interview with prospective Supportive Adults. A Navigator and Supportive Adult should share similar interests and show potential for a strong working relationship. In most circumstances, a Navigator will need to meet several prospective Supportive Adults. Co-Navigators can support Navigators in making cold calls, preparing for informational interviews, and writing follow-up thank-you notes.
- ☐ If an informational interview shows promise, you may want to request a shadow day with the Supportive Adult to understand the daily realities of that Supportive Adult's workplace.
- ☐ Work with the Supportive Adult to create a profile in the B-Unbound Database. Remember, the prospective Supportive Adult is a member of a professional community. If the Navigator has made a good impression, a request for referrals to other potential Supportive Adults will likely result in additional leads.

Manage [B-Unbound Database for Real World Learning](#)

- ☐ Create accounts for Navigators
- ☐ Set Up [Custom Questions](#)
- ☐ Determine Compliance Policies and upload documents, if needed
- ☐ Add Supportive Adults to the RWL database
- ☐ Review/Edit Supportive Adult Submissions
- ☐ Respond to Navigator Requests
- ☐ Suggest RWL opportunities to Navigators
- ☐ Connect already existing databases around specific fields of interest i.e. STEM, Crafts, etc.

Draft and send ongoing communications to Navigators and Supportive Adults



B•Unbound

Co-Navigator Handbook

- ☐ Email, Social Media, and/or Newsletters
- ☐ Stay active on your hosting organizations website and newsletters

Participate in B-Unbound Local Partner Community

- ☐ Check in monthly with B-Unbound Program Director
- ☐ Participate in Local Partner events (virtually and in person)

Important Links

Youth Navigator Experience

Purpose	Website	Quick Link
B-Unbound website	https://www.b-unbound.org/navigator	b.link/BeYou
B-Unbound Web Portal	http://imblaze.force.com/IMB_PortalLogin	b.link/BeYouRWL
B-Unbound App - Android	https://play.google.com/store/apps/details?id=org.bunbound.imblaze&hl=en_US	b.link/BeYou-Android
B-Unbound App - IOS	https://apps.apple.com/us/app/bu-navigator/id1622865887	b.link/BeYou-IOS

Co-Navigator Experience

Purpose	Website	Quick Link
Co-Navigator Playbook	https://www.b-unbound.org/playbook	b.link/Playbook
Navigator Community	https://discord.gg/nSGZBUTxYj	b.link/BeYouDiscord
B-Unbound Web Portal	http://imblaze.force.com/IMB_PortalLogin	b.link/BeYouRWL
B-Unbound App - Android	https://play.google.com/store/apps/details?id=org.bunbound.imblaze&hl=en_US	b.link/CoNav-Android



B-Unbound

Co-Navigator Handbook

	ails?id=org.bunbound.edapp&hl=en_US	
B-Unbound App - IOS	https://apps.apple.com/us/app/bu-navigator/id1622865887	https://b.link/CoNav-IOS

Supportive Adult Experience

Sign up for B-Unbound	https://www.b-unbound.org/supportive-adult	b.link/BeYouAdult
-----------------------	---	---