

**TITLE – NOT MORE THAN 12 WORDS TIMES NEW ROMAN FONT
SIZE 14, BOLD, CENTRED, UPPERCASE**

**AUTHOR’S NAME, TIMES NEW ROMAN, SENTENCE CASE, FONT SIZE 12,
CENTERED**

Affiliation (e.g. Universitas Nurul Jadid) Times New Roman font size 10 in italics, centred

Author(s) email, Times New Roman, font size 10, centred, single spacing

First Received: (the date you send the manuscript)

Final Proof Received: (the date you send the final version)

Abstract

**Left indent:
1.5 cm**

The abstract should be written in one paragraph and should be not more than 300 words. TNR, font size 9, single spacing. Follow the following pattern: General statement about the importance of the topic, gap in literature or discrepancies between theories and practices, purpose of study, method, main findings, and conclusion.

**Right indent:
1.5 cm**

Keywords: Keyword one, keyword two, keyword three, keyword four, keyword five - TNR, 11, single spacing (no more than two lines)

MAIN HEADINGS – FONT SIZE 12, BOLD, CAPITALISED

Subheadings – Font size 12, Bold, Sentence case

Subheadings – Font size 12, Bold, Italic, Sentence case

INTRODUCTION

The article should be between 6-10 pages (not more than 6000 words), single-spaced, 12 point Times New Roman font, excluding references and appendices. Use no indent for the first paragraphs and do not leave a space between paragraphs.

The following paragraphs is indented first line 0.75cm.

Review of literature can be merged into INTRODUCTION

subheading

METHOD

etc.

FINDINGS AND DISCUSSION

Etc.

CONCLUSION AND SUGGESTION

CITATION:

Use APA for in-text citations and the reference list (Angeli et al, 2010). For in-text citations, use the author's name and year (Author, 1980), and if there are direct quotes, then provide the page number" (Author, 2010, p. 24). If you are citing more than one reference, put them in alphabetical order (Alpha, 2008; Beta, 1999). For a reference with up to five authors, use all the names in the first instance (Author1, Author2, Author3, Author4 & Author5, 2007), and then use the first author et al. subsequently (Author1 et al., 2007). Do not use footnotes.

FIGURE AND TABLES

Place titles of Figures after the figures and Tables preceding them using Times New Roman font size 10 for the title.

Table 1. Number of articles published in IJAL from 2011 to 2016

Year	No
2005	7
2006	5
2007	5
2008	6
2009	6
Total	29

The font of the table is Times New Roman (font size 9)

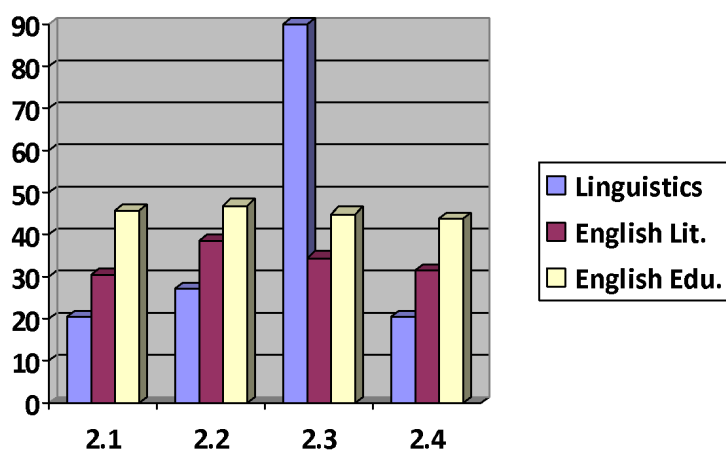


Figure 1. Number of subtheme published in IJAL

REFERENCES (Examples)

- Angeli, E., Wagner, J., Lawrick, E., Moore, K., Anderson, M., Soderland, L., & Brizee, A. (2010, May 5). *General format*. Retrieved November 9, 2018, from <http://owl.english.purdue.edu/owl/resource/560/01/>.
- Ball, S., Kenny, A., & Gardiner, D. (1990). Literacy, politics and the teaching of English. In I. Goodson, & P. Medway, (Eds.), *Bringing English to order* (pp. 47- 86). London: The Falmer Press.
- Big drop in students studying O-level literature. (1997, August 16). *The Straits Times*, p. 3.
- Chambers, E., & Gregory, M. (2006). *Teaching and learning English Literature*. London: Sage Ltd.
- Choo, S. (2004). Investigating Ideology in the Literature curriculum in Singapore. Unpublished master's thesis. Department of English Language and Literature: National University of Singapore.
- Choo, S. (2011). On literature's use(ful/less)ness: Reconceptualising the literature curriculum in the age of globalisation. *Journal of Curriculum Studies*, 43(1), 47-67.
- Curriculum Planning and Development Division. (2007). *Literature in English, teaching syllabus*. Ministry of Education: Singapore.

APPENDIX

Add here if any.