

Health Periodic Journal Article Writing Templates

ABSTRACT

A maximum 200-word abstract in English in italics with Arial 10 point, single space. The abstract should be clear, and descriptive, and should provide a brief overview of the problem studied. Abstract topics include an introduction (1-2 sentences), the purpose of study (1 sentence), methods (3-5 sentences), result study (3-5 sentences), and conclusion (1 sentence). Written in one paragraph.

(kosong satu spasi tunggal, 10 pt)of under-fives in Indonesia. Variables of mother's age, mother's parity, number of mother's children, and mother's birth spacing cannot be analyzed in the meta-analysis.

First Author¹⁾, second author², third author³

¹⁾Institution of the first author

²⁾ Institution of the second author

³⁾ Institution of the third author

correspondent email: first author
@address.com

Article Info

Submitted

In reviewed

Accepted

Available Online

Keywords:

keyword 1;

keyword 2;

keyword 3;

keyword 4;

keyword 5;

INTRODUCTION

contains the urgency and background of the research problem described using the inverted pyramid method starting from the global, national and local levels. Include references (relevant literature or

research results) using the source number in each sentence adapted to the Bibliography, for example: Research by Strasburger et al., in 2010 adolescents aged 8-18 years spent an average of 7 hours per day to access media (1).

The number of pages in the introduction is 1-1.5 pages written using Arial 10 points (upright) with a space of 1. Each paragraph begins with a word that indents 10 mm. At the end of the introduction it should be stated explicitly the purpose of the study of the article.

METHODS

This section describes the type of research, the location and time of the study, the population and sample, sampling techniques, data collection techniques, data analysis, and data presentation. Research using tools and materials, it is necessary to write down the specifications of the tools and materials used. Qualitative research such as case studies, phenomenology, ethnography, etc., need to add descriptions to check the validity of the research results. Writing uses Arial 10 points (upright) with a space of 1. The paragraph begins with a word that indents 10 mm and may not use the organization of writing into "sub-headings" in this section. Published in 1-2 paragraphs. If research is directly related to patients, and uses test animals in research. Please attach a research code of ethics related to your article.

If there is a reaction or mathematical equation, it is placed symmetrically in the column. The equation number is placed at the far right in parentheses, and the numbering is done sequentially. If there is a series of equations that is more than one line, then the number is written on the last line. The designation of the equation in the text in the form of abbreviations, such as Eq. (1).

(blank one single space 10 pt)

$$ka = -\left(\frac{\partial u}{\partial x} + \frac{\partial v}{\partial y}\right) \quad (1)$$

RESULT AND DISCUSSION

The results and discussion contain the results of research/development findings and their scientific discussion. Write down scientific findings (scientific finding) obtained from the results of research that has been carried out but must be supported by adequate data. The scientific findings referred to here are not data obtained from research results. These scientific findings must be explained scientifically including: What are the scientific findings obtained? Why did that happen? Why such a variable trend? All these questions must be explained scientifically, not only descriptively, if necessary supported by adequate scientific basis phenomena. In addition, the comparison with existing concepts and comparisons with previous studies must also be explained, whether the results of the research are appropriate or not, for the better or not and other aspects. In this chapter, it is also recommended to write down the implications of the research results, both theoretical and applied.

The writing uses Arial 10 points (upright) with 1 space. The paragraph begins with a word that is indented 10 mm. The table is written with Arial font size 10 pt and is one space below the table title. The title of the table is written in 10 pt font, bold and placed above the table. Table numbering uses Arabic numerals (1,2,.....). Tables are placed as soon as they are mentioned in the text.

(blank single space, 10 pt)

Table 1. Distribution of behavior level categorization

(blank single space, 6 pt)

Range	Category	Frequency	Percentage
$X < 110$	Low	4	13,333%
$110 \leq X < 165$	Medium	17	56,667%
$165 \leq X$	High	9	30%

source: Primary data, 2017

If the table has a lot of rows/columns, a single column or full page format can be used. Tables that exceed the column size are placed at the top or bottom of the page.

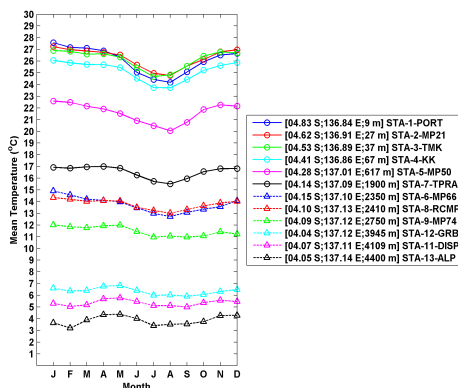
Tabel 2. Analisis Perbedaan Tingkat pendidikan dengan Kejadian Penyakit Diare Daerah Bantaran Sungai di Kabupaten Banjar

Level of Education	Riverside Area			Mainland Area		
	Diarrhea		P	Diarrhea		P
	Yes	No		Yes	No	
No School/Not Finished Elementary School	19 (41,3%)	27 (58,7%)	0,686	9 (18,4%)	40 (81,6%)	1,000
Not Finished Elementary School	1 (33,3%)	2 (66,7%)		0 (0%)	1 (100%)	
High school graduate	0 (0%)	1 (100%)		-	-	

source: Primary data, 2017

If the title on the label column is too long, then the column is numbered and the description is below the table.

(blank single space10pt)



(blank single space, 6 pt)

Figure 1. Graph of Growth Rate of Agrarian Society (10 pt)
(blank two single space, 10 pt)

Images are placed immediately after being mentioned in the text if the image size is not too large (still one column size). Images are laid out symmetrically in columns. If the image is large enough, one column format can be used, such as the example in table 2. The image is placed at the top or bottom of each page and should not be enclosed in sentences for large images. Image numbering using Arabic numerals. The caption for the image is written in 9 pt Arial font, bold and placed at the bottom, as in the example above. Images that have been published by other authors must be mentioned in the description of the image. For Qualitative Research must include a Chart explaining the results of the study. As for quantitative research must include a table of statistical calculation results along with the number of results.

CONCLUSION

The conclusion does not contain a repetition of the results and discussion, but rather a summary of the findings as expected in the objectives or hypotheses. If necessary, at the end of the conclusion can also be written things that will be done related to the next idea of the research. Conclusions are expressed as paragraphs. Numbering or itemizing is not permitted in this chapter. Sub-chapters (eg A. Conclusion, B. Suggestions) are also not allowed in this chapter. Writing conclusions and suggestions using Arial 10 points (upright) with a space of 1. The paragraph begins with a word that indents 10 mm. Shown in 1 paragraph.

AUTHOR'S CONTRIBUTION STATEMENT

The contribution of each authors are: SB Swrote entire original draft; XX contributed to methodology designand data analysis; LS provided data for discussion and data analysis; HMD: data analysis and manuscript editing, DLS: manuscript editing and data analysis.

CONFLICTS OF INTEREST

No author of this paper has a conflict of interest, including specific financial interests, relationships, and/or affiliations relevant to the subject matter or materials included in this manuscript.

ACKNOWLEDGMENTS

If necessary, thanks can be given to 1) those who provided financial assistance and support, 2) support from departments and institutions, 3) professionals who contributed to the preparation of the report.

REFERENCES

The references is written according to the Vancouver writing rules. All references used in writing in the references are numbered according to their appearance in the article, not alphabetically. Include only used and relevant literature. Reference sources at least 80% in the form of libraries published in the last 10 years. Reference sources in the form of journals from articles of at least 60% of the total references. The references used are primary sources in the form of research articles in journals or research reports, books or related articles from official sources. Articles published in the JBK journal are recommended to be used as references. To maintain consistency in the way of referring, citing and writing references we recommend using standard reference applications such as Endnote, Mendeley, Zotero, RefWorks or Colwiz

REFERENCES

1. Perdana AS., Keman S. Hubungan higiene tangan dan kuku dengan kejadian enterobiasis pada siswa SDN Kenjeran No. 248 Kecamatan Bulak Surabaya. *Jurnal Kesehatan Lingkungan* 2013; 7(1): 7-13.
2. Purti HD. Faktor yang Berhubungan Dengan Enterobiasis Pada Anak SD Di Kelurahan Tambak Wedi Kecamatan Kenjeran Tahun 2009. Skripsi. Surabaya: Fakultas Kesehatan Masyarakat Universitas Airlangga, 2009.
3. Magee, M. J., Foote, M., Maggio, D. M., Howards, P. P., Narayan, K., Blumberg, H. M., Ray, S. M. & Kempker, R. R. Diabetes Mellitus and Risk of All-Cause Mortality among Patients with Tuberculosis in the State of Georgia, 2009-2012. *Annals of epidemiology*, 2014;24(1):369-75.
4. Hendratno S. Oxyuriasis pada Siswa Sekolah Dasar di Kecamatan Kandang Serang Kabupaten Pekalongan. *Majalah Kedokteran Tropis Indonesia* 1994; 7(3): 2-7.
5. Notoatmodjo S. Promosi Kesehatan dan Ilmu Perilaku. Jakarta: Rineka Cipta, 2007.
6. Seeley, R, VanPutte, C, Regan, J & Russo, A. Seeley's Anatomy & Physiology. New York: Mc Graw-Hill; 2011.
7. Tawali A, Dachlan DM, Hadju V, dan Thaha Ar. Pangan dan Gizi : Masalah, Program Intervensi dan Teknologi Tepat Guna. Makassar: DPP gizi Pangan dan Pusat Pangan, Gizi dan Kesehatan; 2002.
8. Kemenkes RI. Rencana Strategis Kementerian Kesehatan tahun 2015-2019. Jakarta : Kementerian Kesehatan RI; 2015.
9. Yuliani N. Hubungan antara Pengetahuan, Sikap, dan Praktik Hidup Sehat Dengan Kejadian Cacingan pada Siswa Sekolah Dasar Negeri Bulusan I Kecamatan Tembalang Kota Semarang Tahun 2006. Skripsi. Universitas Negeri Semarang, 2007.
10. Lewis BA. Structure and Properties of Carbohydrates. In: *Biochemical and Physiological Aspects of Human Nutrition*. Philadelphia: W. B. Saunders Company; 2000. pp. 3-18.
11. Departemen Kesehatan RI. Peraturan Menteri Kesehatan RI No.11 Tahun 2016 Tentang Penyelenggaraan Pelayanan Rawat Jalan Eksekutif di Rumah Sakit. Jakarta: Depkes RI, 2016.

