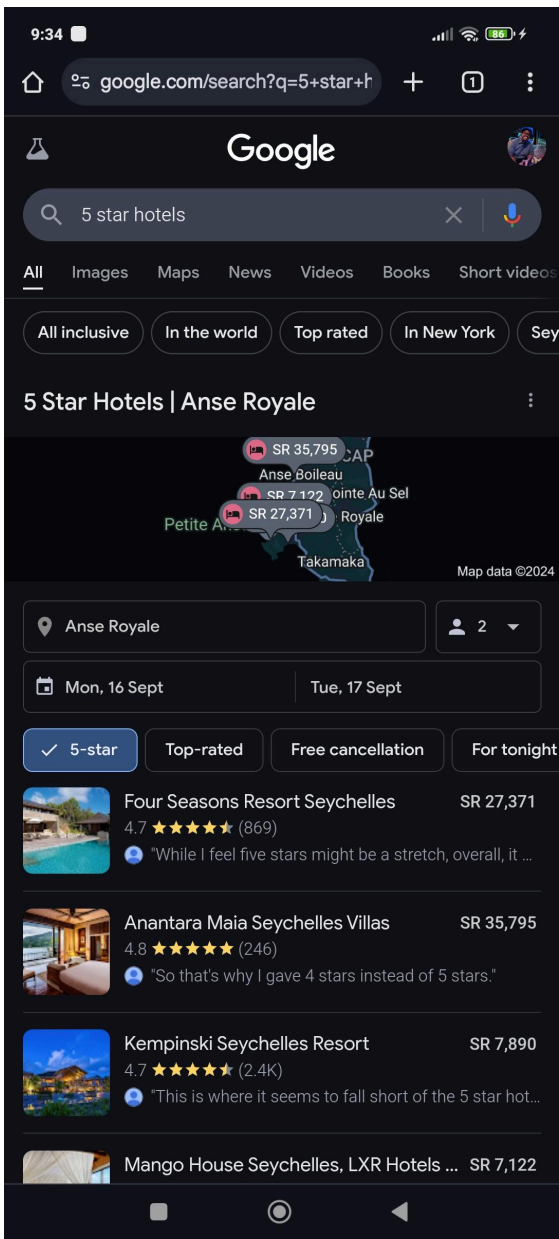
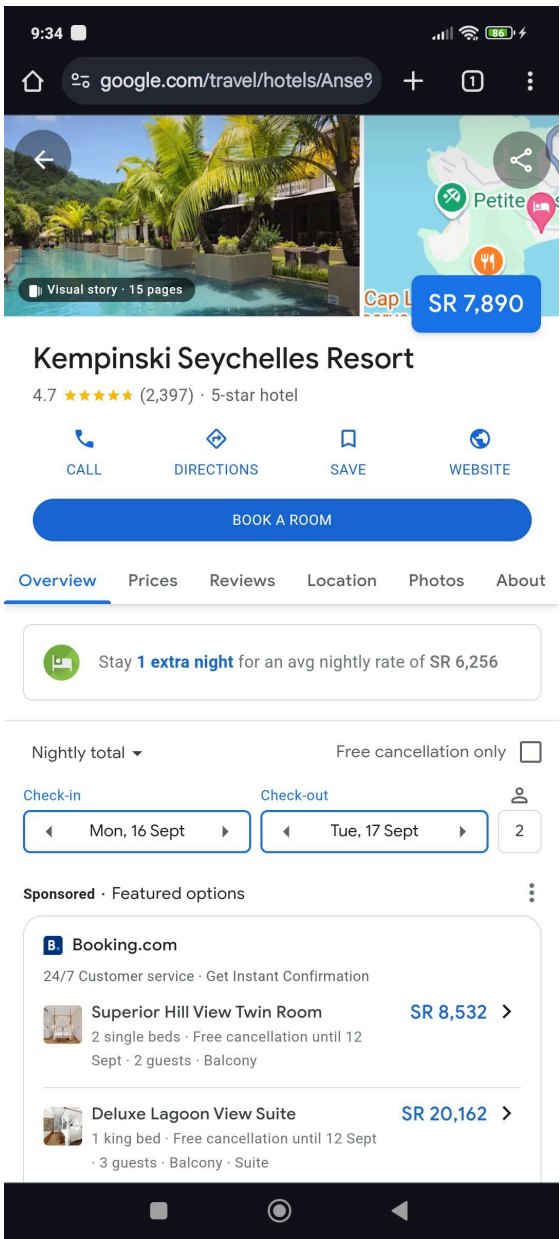


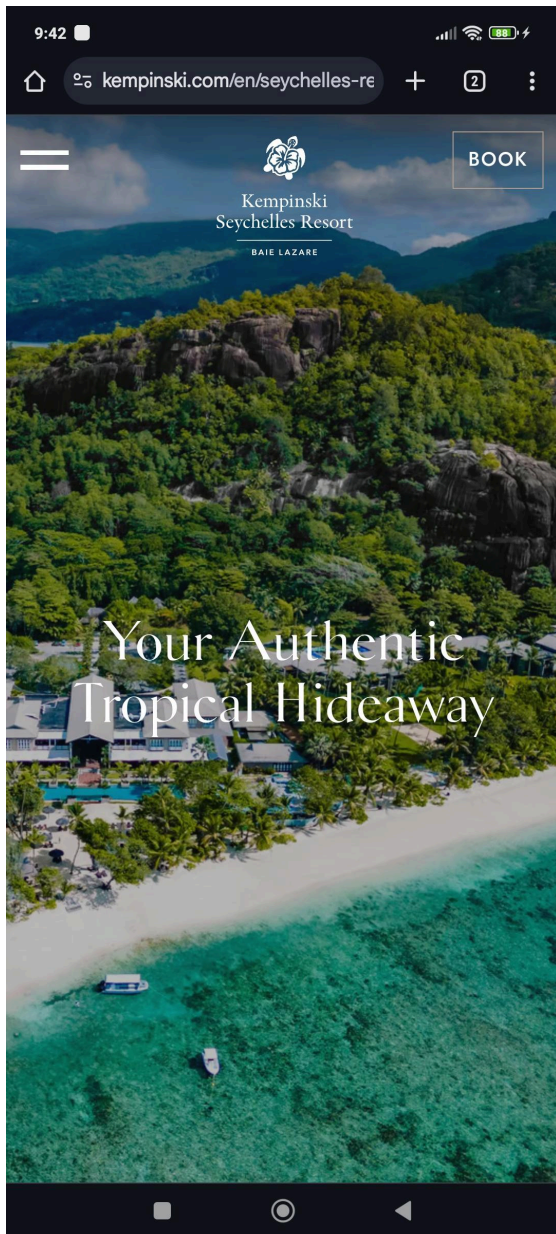
Example Funnel - Search

I searched for 5-star hotels on Google and selected the one with the most reviews.



Having a significant number of reviews from previous customers helps build trust and provides valuable social proof, reinforcing belief in the quality and reliability of the hotel's services.





Providing detailed information about the hotel's location and health and safety measures enhances trust in the company, reassuring guests about their safety and the quality of their stay.



Kempinski Seychelles Resort

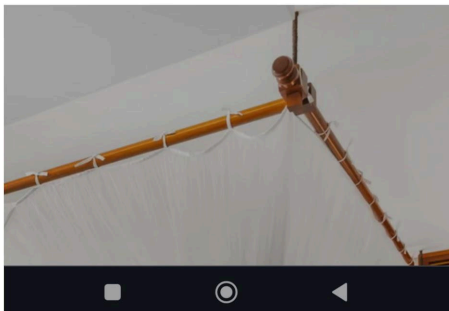
In historical Baie Lazare, nestled between the dramatic Mount Kempinski and the azure Indian Ocean, our 5-star resort in southwest Mahé is a spectacular retreat offering myriad of facilities and activities. The tropical charm of the resort is a haven for couples, families and meetings.

HOTEL DETAILS

✉ reservations.seychelles@kempinski.com

☎ +248 438 6666

📍 Baie Lazare - Mahé, Seychelles



Our Hotel

Experience an island paradise with tropically elegant rooms and suites, a spa sanctuary with land and sea activities, fine dining, and more.

MORE DETAILS



Location



They highlight amenities like the spa, restaurant, and bars included with the room rates, which increases customer desire by showcasing the added value of their stay.



Restaurants & Bars

Kempinski is passionate about food; quality, authentic and flavourful ingredients are boundless. Enjoy the premium dining options available at Kempinski Seychelles Resort Baie Lazare.

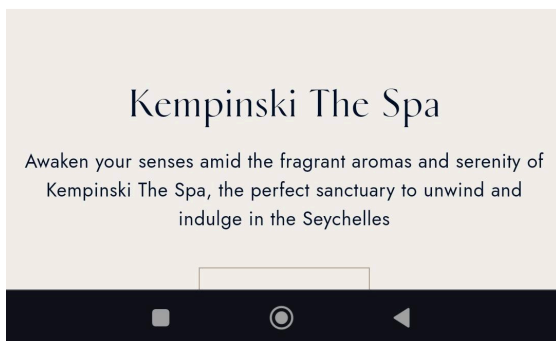
Cafè Lazare >

Windsong >

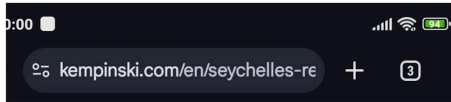
Planters Bar & Lounge >

Le Petit Chef >

[READ MORE](#)



Giving customers the option to choose their own rooms increases their desire to book while also enhancing trust and belief in the hotel's commitment to a personalized experience.



STINATION

Kempinski Seychelles Resort

DATES

17 Sep - 20 Sep, 2024

ROOMS & SUITES

Room: 1 Adult

do you have a code?

EXPLORE OPTIONS

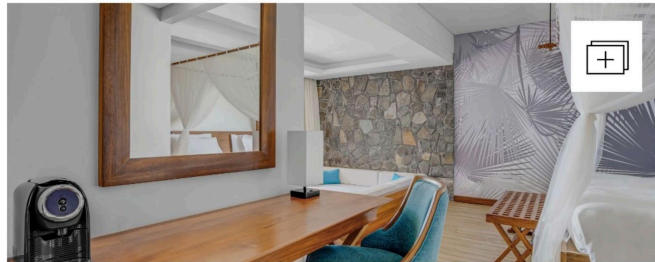
KEMPINSKI SEYCHELLES RESORT

STEP 1/4: CHOOSE YOUR ROOM

ROOMS

SUITES

☐ Accessible rooms 



SUPERIOR HILL VIEW ROOM

40 m² / 430 ft²

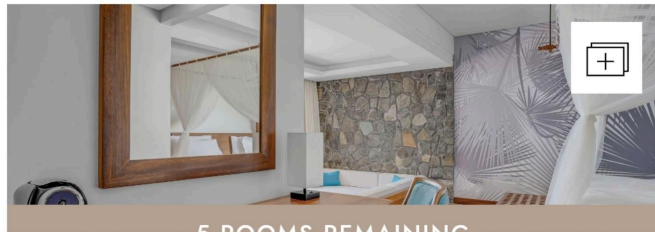
Spectacular view

FROM

369.90 EUR

SELECT

Tourism Environmental Sustainability Levy excluded



5 ROOMS REMAINING