

Provisioning Google Workspace for Education Licenses

Getting started with Google Workspace for Education

Google Workspace for Education editions and add-ons help you create an innovative learning environment with enterprise-grade tools that are customized for education. Here we'll provide step-by-step guidance on different options for how to provision Google Workspace for Education licenses to your users.

Table of Contents

Tips and best practices for deploying licenses

How licensing works

- Google Workspace for Education Overview
 - Managing your available licenses
 - Lifecycle of license management
-

Ways you can assign licenses

Using the Google Workspace Admin console

- User-based automatic license assignment
 - Automatically assign a license to every user in your organization
 - Set up automatic licensing for organizational units (OUs)
 - Set an organization to override its parent setting
 - Revert an organization's override setting
 - Switch an overriding organization's automatic licensing setting
-

User-based manual license assignment

- Manually assign and remove licenses on the Users page
 - Manually assign and remove licenses on an individual user's page
 - Manually assign and remove licenses using bulk upload
-

Using Google Cloud Directory Sync (GCDS)

- Assigning Licenses
-

Using a third-party command line tool (e.g. GAM)

- Assigning Licenses
 - Deleting Licenses
-

Using the Google Sheets-based License Management Tool

Using the Enterprise License Manager API



Tips and best practices for deploying licenses

- Only a Google Workspace Administrator has access to the Admin console and can distribute the Google Workspace for Education licenses.
- While you can choose from a number of options to provision licenses, we recommend that you choose one option to use going forward.
- Before assigning licenses, we recommend that you [move suspended users](#) out of the OU(s) or group(s) that you plan to license, in order to avoid giving those users licenses.



How licensing works

In order for users to take advantage of Google Workspace for Education features, they must have a license assigned to them ([How licensing works](#)).

You can assign licenses to individual users, to everyone in an organizational unit, or to everyone in your Google Workspace domain.

Note: If you assign paid edition or add-on licenses (Education Plus, Education Standard, Teaching and Learning Upgrade, Gemini Education, Gemini Education Premium) to your users, those users must also have an Education Fundamentals license assigned to them.



Important

You can only assign as many licenses as you have available, including any of the automatic or manual methods described below. If you try to assign more licenses than you have available, you'll get an error message and the licenses won't be assigned. In that case, you need to unassign licenses from users or request or purchase more licenses.

Google Workspace for Education Overview

Google Workspace for Education is a suite of Google tools that empower schools and universities to secure their learning environments, enhance instructional impact, and prepare students for the future. Google Workspace for Education offers multiple options to meet your organization's needs.

Google Workspace for Education editions—Editions are licensed for your entire domain and comprise a suite of secure, easy-to-use tools designed for teaching and learning, like Gmail, Docs, Classroom, Slides, Drive and more.

Google Workspace for Education add-ons—Add-ons build on editions to provide specific users in your domain with additional functionality. You need an existing Workspace edition to purchase an add-on.

Google Workspace for Education licenses—Workspace provides different types of licenses to help you better manage your users and equip them with the right level of functionality.

You can find more information about the different types of editions, add-ons and licenses below.

Google Workspace for Education editions

- [Google Workspace for Education Fundamentals](#)—A foundational suite of secure and easy-to-use tools — provided at no cost — that help improve collaboration, productivity, and class management. Provides access to apps like Google Docs, Classroom, Meet, Gmail, Forms, Chat and more.
- [Google Workspace for Education Standard](#)—A paid edition that builds on the functionality of Education Fundamentals and helps you proactively protect your education institution from digital threats with advanced security and analytics tools.
- [Google Workspace for Education Plus](#)—A paid edition that is our most comprehensive solution, including everything in Education Fundamentals and Standard and more, providing advanced security and insights and easy-to-use tools that enrich and personalize learning.

Education Fundamentals is free of charge to all qualifying institutions. Education Standard and Education Plus are paid subscriptions.

Google Workspace for Education add-ons

- [**Gemini Education**](#)—Gemini is an AI-powered assistant that can help you save time, create captivating learning experiences, and inspire fresh ideas — all in a private and secure environment. Gemini Education embeds Gemini across Workspace apps - like Gmail, Docs and Slides - and provides access to chat with Gemini Advanced using our most capable AI models widely available today. Gemini Education is a lower price offering to help education institutions get started with generative AI in Workspace, with a monthly usage limit.
- [**Gemini Education Premium**](#)—Includes everything in Gemini Education, plus additional advanced features like AI-powered note taking and summaries in Meet, AI-enhanced data loss prevention and more coming soon. This add-on provides full access and usage of generative AI tools in Workspace.
- [**Teaching and Learning**](#)—Builds on the functionality of Education Fundamentals or Education Standard and helps educators enhance instructional impact with tools that enrich and personalize learning, create classroom efficiency, and enable teaching and learning from anywhere. Adds premium capabilities in Google Classroom, enhanced video-communication capabilities in Meet, and more.
- [**Endpoint Education Upgrade**](#)—Adds advanced device management features to your Education Fundamentals edition.
- [**Google Workspace Additional Storage**](#)—Increases your pooled storage in Google Drive 10TB increments. This add-on does not require assigning licenses.

All Google Workspace for Education add-ons are paid subscriptions.

Google Workspace for Education licenses

Each Google Workspace for Education edition and add-on has an associated license. For example, Education Fundamentals licenses provide access to all of the products and features included in the Education Fundamentals edition and Gemini Education licenses provide access to all of the products and features included in the Gemini Education add-on. Additionally, there are two new free of charge license types coming in 2025:

- **[Coming Soon] Gmail Only User**—This license allows users who don't need access to all of the tools in Google Workspace for Education to keep access to Gmail. For example, this might be helpful for Education institutions who want to provide Gmail access to their growing alumni base while limiting the impact they have on the domain's storage quota.

- **[Coming Soon] Archived User**— This license ensures that a user’s data is retained and protected by the same security as users with an Education Fundamentals license, but prevents them from accessing Google Workspace for Education services. This is helpful when a user leaves your institution or when an admin assigns an Archived User license to an Education Fundamentals user, it frees up their Education Fundamentals license for another user in their domain.

Managing your available licenses

- **Education Fundamentals licenses:** Google Workspace for Education domains receive 2,500 Education Fundamentals licenses. Before people in your institution can use Google Workspace for Education, you need to create user accounts. You can create user accounts individually or in bulk, using the Admin Console, GCDS, or 3rd party tools like GAM (see the [deployment guide](#) for more information) . When you create the user, you’ll need to assign them an Education Fundamentals license.
- **Gmail Only User licenses:** You will be able to assign Gmail Only User licenses when they become available later in 2025. Education domains will receive 2,500 Gmail Only User licenses.
- **Archived User licenses:** Similarly, in 2025 you will be able to archive a user with either an Education Fundamentals license or a Gmail Only User license so you can free up their license for another user in your domain while securely retaining their data.
- **Other Editions and Add-ons:** Paid licenses, such as Education Plus and Gemini Education, can be purchased from reseller partners, and can be assigned to users with Education Fundamentals.

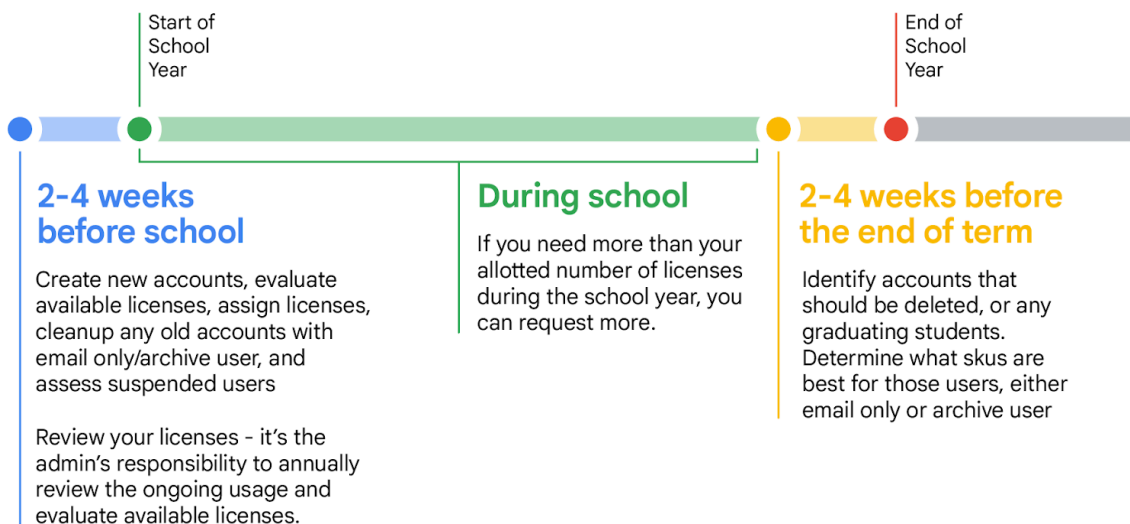


Important

For Google Workspace for Education domains created on or after November 13, 2024, when you create a new user they will not be able to access Workspace services until they are assigned a Fundamentals license. For domains created before this date, we’ll be assigning Education Fundamentals licenses to all existing users when your domain is transitioned to the new licensing policy in 2025. After the transition period is complete, newly created users will not be able to access Workspace services until they are assigned an Education Fundamentals license.

Lifecycle of license management

We recommend school administrators review their license assignment on a regular basis. There are three key points in time throughout the year in which license management is particularly relevant and we recommend you take action on the following timelines:





Ways you can assign licenses

Using the Google Workspace Admin console

User-based automatic license assignment

If you know that everyone in your organization needs a Google Workspace for Education paid license, you can turn on automatic license assignment. If you do, users in your account who don't have a license (and any new users you add later) get a license for Google Workspace for Education. If you have multiple Google services, you can only turn on automatic licensing for one service.

Note:

- If you have multiple Google services or multiple subscriptions of the same service, you can only turn on automatic licensing for one service or subscription.
- If you have organizational units under your top-level organization, you can set automatic licensing options for specific organizational units.
- If you choose to automatically assign licenses for a service to all users, you can't remove an individual user's license.
- It can take up to 24 hours for an automatically assigned license to take effect.
- Automatic license assignment will assign licenses to both active and suspended users in the organization / OU(s) that you enable. Before assigning licenses, we recommend that you [move suspended users](#) out of the OU(s) that you plan to license, in order to avoid giving those users licenses.

Automatically assign a license to every user in your organization

You can assign a license to every user in your organization automatically from the License settings page of the Admin console.

1. From the Admin console Home page, click Menu, and on the left, click **Billing > License settings**.
2. Click the service you want to assign licenses for.
3. Click **Off** > select **On**.
4. If you have multiple subscriptions of the same service, choose which subscription to use for automatic license assignment.
5. Click **Save**.

Set up automatic licensing for organizational units (OUs)

If you set up organizational units in the Google Admin console, all child organizations inherit the automatic licensing setting of their parent. You can, however, override a parent setting and set the automatic licensing option independently.



Important

To understand when you inherit or override a setting, or how automatic licensing affects existing users, please see this [help center article](#).

Set an organization to override its parent setting

1. From the Admin console Home page, go to **Billing**.
2. On the left of the subscription name, click the **Down** arrow to expand the box. (The **Auto-licensing** field shows whether you have automatic licensing assignment turned on or off for the entire organization. It also shows any organizations that are currently overriding the default setting.)
3. Click **Override for specific organizations**.
4. (Optional) To see any child organizations, next to an organization name, click the **Down** arrow.
5. Hover over the organization and click **Override**.
6. Repeat steps 5 and 6 for any other organizations.
7. Click **Done**.

8. On the **Billing** page, click **Save**. The organization now appears under Overriding Organizations in the subscription box.

Revert an organization's override setting

1. From the Admin console Home page, go to **Billing**.
2. On the left of the subscription name, click the **Down** arrow to expand the box.
3. To the right of an organization, click **X** to remove the override.
4. Click **Save**.



Tip:

If you want to perform overrides and reversions at the same time, follow steps 4–9 of the override procedure above. In step 6, click **Inherit** or **Override** as needed.

Switch an overriding organization's automatic licensing setting

1. From the Admin console Home page, go to **Billing**.
2. On the left of the subscription name, click the **Down** arrow to expand the box.
3. To the right of an organization, click **On** or **Off**.
4. Select **On** or **Off**.
5. Click **Save**.

User-based manual license assignment

You can manually assign licenses to individual users, an uploaded list of users, or an entire organizational unit.

If you manually assign licenses to an organization, only users in that organization get a license. Users in child organizations don't automatically receive a license—you need to manually assign it to them as well.

Manually assign and remove licenses on the Users page

1. From the Admin console Home page, go to **Users**.
2. Next to each user's name where you want to assign or remove a license, check the box.
3. At the top, click **More > Assign Licenses** or **Remove Licenses**.
4. Click **Google Workspace for Education > Assign** or **Remove**. (Note: if you have multiple Google Workspace for Education license types, you can select the specific type by clicking the dropdown menu.)

Manually assign and remove licenses on an individual user's page

1. From the Admin console Home page, go to **Users**.
2. Click the name of the user you want to manage.
3. Scroll down and click the user's **License** section.
4. Click **Google Workspace for Education** to display the on/off switches in the **Status** column.
5. Next to Google Workspace for Education, in the **Status** column, click the switch to assign or remove a license.
6. Click **Save**. (Note: if you have multiple Google Workspace for Education license types, you can select the specific type by clicking the dropdown menu.)

Manually assign and remove licenses using bulk upload



Note:

You assign a maximum of 200 licenses at one time using bulk upload. To assign more than 200 licenses, you can repeat the process as many times as needed.

Step 1: Download user information

1. From the Admin console Home page, go to **Users**.
2. At the top of the page, click **Download users**.
3. Under **Select columns**, select **All user info columns and currently selected columns**

4. Select your preferred format, and click **Download**

Step 2: Enter license information

1. In the spreadsheet, find the column labeled **New Licenses [UPLOAD ONLY]**. (If you want to see the currently assigned license(s) for a user, use the Licenses [READ ONLY] column.)
2. Enter the [SKU ID](#) for the license you want to assign:
 - a. For Google Workspace for Education - Fundamentals (accounts created before Nov 13, 2024): Google-Apps-For-Education
 - b. For Google Workspace for Education Fundamentals (accounts created on/after Nov 13, 2024): 1010070001
 - c. For Google Workspace for Education Plus - Legacy: 1010310002
 - d. For Google Workspace for Education - Legacy (Student): 1010310003
 - e. For Google Workspace for Education Plus: 1010310008
 - f. For Google Workspace for Education Plus (Staff): 1010310009
 - g. For Google Workspace for Education Standard: 1010310005
 - h. For Google Workspace for Education Standard (Staff): 1010310006
 - i. For Google Workspace for Education Teaching and Learning Upgrade: 1010370001
3. Enter SKU IDs for up to 200 users (see note above).
4. Save the file in CSV format (.csv).

Step 3: Upload the file

1. At the top of the Users page in the Admin console, click **Bulk update users**.
2. Click **Attach CSV file**.
3. Browse to the location on your computer and attach the CSV file.
4. Click **Upload**. If there's an error, enter the missing information in your spreadsheet and upload the file again. For more information, see [common errors](#).

Your [Tasks list](#) opens automatically and shows the progress of the upload. Once processing is complete, you'll receive an email report. If there's a processing error, download the log file from your Tasks list. For more information, see [common errors](#).



Using Google Cloud Directory Sync (GCDS)

You can use [Google Cloud Directory Sync](#) (GCDS) to automatically synchronize users, groups, and contacts so that the data in your Google Account matches the data in your LDAP server, such as Microsoft Active Directory. You can also use GCDS to sync licenses by user, OU, or group.

Assigning Licenses

1. Follow [these instructions](#) to understand how GCDS works and to get started
2. [Set up your sync](#) with Configuration Manager
3. On the **Licenses** page of Configuration Manager, set up the GCDS license synchronization for users in your Google Account.
4. Assign the email address attribute: Under **Email address attribute**, specify what attribute GCDS uses as the email address mapping between the LDAP user account and the Google Account user.
5. To assign licenses, click **Add Rule**.
6. In the **LDAP Query** field, using LDAP query notation, specify the users on your LDAP directory that should be assigned the license.
 - a. **Important:** You can only configure one license rule for each license SKU.
7. Select **Assign licenses to Google domain users**.
8. Click the **License** list and select the license SKU.
9. (Optional) Check the **Remove this license from Google domain users that don't match this rule** box to remove licenses from Google users that don't match the rule.
 - a. **Note:** Checking the box might result in removing licenses for a large set of users in your account if your LDAP configuration isn't correctly defined. Check your configuration before using this feature.
10. Select one of the following options:
 - a. **OK**—Adds the rule and returns to the LDAP license rules screen

- b. **Apply**—Adds the rule and begins another LDAP license rule
- c. **Cancel**—Cancels the rule
- d. **Test LDAP query**—Tests the validity of the LDAP license query



Using a third-party command line tool (e.g. GAM)

For quick, large-scale account provisioning, you can use third-party solutions. For example, the free, downloadable, open-source [Google Apps Manager \(GAM\)](#) uses the Admin SDK Directory API to create and manage Google Workspace users and groups.

GAM interacts with many Google APIs, which you can use to also manage other account features and resources.

Important: Google Cloud Support doesn't support GAM or other third-party solutions. We support the Admin SDK Directory API those tools use. GAM is subject to the [Apache 2.0 license](#), which provides the terms and conditions for your use, reproduction, and distribution of GAM.

If you decide to GAM, follow these recommended steps:

Assigning Licenses

1. From the GAM website, [download GAM](#).
2. [Configure the tool](#).
3. During setup, when asked if you're "ready to authorize GAM to manage Google Workspace user data and settings," answer N (no) to skip Domain-Wide Delegation.
4. This command helps you confirm that GAM is associated with the right Google Workspace account: `gam info domain`
5. You can [add licenses](#) by username, organizational unit, or group. The syntax to add licenses is:

```
gam user <username>|group <groupname>|ou <ouname>|all users add license <sku>
```

For example, to give all members of the “Teachers” group Google Workspace for Education Plus - Legacy licenses:

```
gam group teachers add license 1010310002
```

Syncing Licenses

You can also add and remove licenses from users based on their inclusion in a specified user list.

- The inclusion list could be a Google Group, OU or local text file.
- Users who are not included in the user list and who have the license applied will have the given license type removed from their account.
- Users included in the user list and who do not have the license will have it added to their account.
- You can use “group_ns” to remove licenses from suspended users

The syntax to sync licenses is:

```
gam user <username>|group <groupname>|ou <ouname>|all users sync license <sku>
```

Example

The following example will create two Google Groups named e4e and e4es, add currently licensed users to the groups and finally sync the license to the group. Because we use group_ns (group no suspended) in the last step, suspended users will have the license removed. Rerunning the final two commands on a recurring basis will keep the licenses aligned with the non-suspended group members.

```
gam create group e4e "Google Workspace for Education users"  
gam create group e4es "Google Workspace for Education Student users"  
gam update group e4e add members license 1010310002  
gam update group e4es add members license 1010310003  
gam group_ns e4e sync license 1010310002
```



```
gam group_ns e4es sync license 1010310003
```

Deleting Licenses

The syntax to delete licenses is:

```
gam user <username>|group <groupname>|ou <ouname>|all users delete license <sku>
```

For example, to remove licenses from the “Staff” OU:

```
gam ou staff delete license 1010310002
```



Using the Google Sheets-based License Management Tool

The Google Sheets-based [License Management Tool](#) allows administrators to manage and automate license assignments in bulk. The tool is offered by [AppsEdu](#), a Google for Education partner, at no charge to global educational institutions who use Google Workspace for Education.

[Download the tool here](#), and review the [instructions and best practices document](#). Also, please note the following:

- The License Management Tool is designed primarily for small to medium-sized institutions (fewer than 20,000 active users). For larger institutions, we recommend using GAM, GCDS, or the License Manager API.
- For help using the License Management Tool, please email help@gwfelicensetool.com.



Using the Enterprise License Manager API

You can use the Enterprise License Manager API to assign and remove licenses.

[Get started here](#), or follow the instructions in:

- [Prerequisites](#) — Get an account, learn about the product, and create a project in the Google APIs Console.
- [Install a client library](#) — Download a client library for your programming language, and import the classes you need.
- [Set up your application authorization](#) — Set up your client's authorization.
- To understand how to manage licenses, begin with the API's [Concepts](#).
- To understand how to pull all of this together and to manage your client's requests and API service responses, see the [How To Guides](#).