

# **Mountain Home Junior High School**

## **7th & 8th Grade Registration**

### **Course Catalog • 2025-2026**



**One Town • One Team**

Mountain Home Junior High School • 1600 E 6th S • Mountain Home, ID 83647  
Phone: 208.587.2590 • Fax: 208.587.2597 • [www.mtnhomesd.org/mhjh](http://www.mtnhomesd.org/mhjh)

## District/Junior High Administrators/Registration

Mr. James Gilbert	District Superintendent	208.587.2580
Mr. Ryan Kuntz	Jr. High Principal	208.587.2590 <a href="mailto:kuntz_rm@mtnhomesd.org">kuntz_rm@mtnhomesd.org</a>
Mrs. Jessie Ward	Jr. High Asst. Principal	208.587.2590 <a href="mailto:ward_ja@mtnhomesd.org">ward_ja@mtnhomesd.org</a>
Mrs. Jennifer Sirani	Jr.High Counselor	208.587.2590 <a href="mailto:sirani_jl@mtnhomesd.org">sirani_jl@mtnhomesd.org</a>
Mrs. Jennifer Poe	Jr. High Registrar	208.587.2590 <a href="mailto:poe_jl@mtnhomesd.org">poe_jl@mtnhomesd.org</a>

### Attention Parents/Guardians

The new Idaho Immunization Law (code 39-480)1 requires that all 7<sup>th</sup> & 8<sup>th</sup> grade students receive the following immunizations for the new school year.

#### BEFORE ADMITTANCE: ☐1 Tdap ☐1 Meningococcal

\*\*Immunizations must be complete and parents must provide the school with record of the new immunizations. Students will not be able to attend class until a current immunization record has been provided to the school with proof of Idaho State compliance.\*\*

#### TITLE 39 • HEALTH AND SAFETY • CHAPTER 48 • IMMUNIZATION

39-4802. EXEMPTIONS. (1) Any minor child whose parent or guardian has submitted to school officials a certificate signed by a physician licensed by the state board of medicine stating that the physical condition of the child is such that all or any of the required immunizations would endanger the life or health of the child shall be exempt from the provisions of this chapter. (2) Any minor child whose parent or guardian has submitted a signed statement to school officials stating their objections on religious or other grounds shall be exempt from the provisions of this chapter. (3) School officials shall describe the exemptions provided in this section and provide a citation to this section in any communication to parents and guardians regarding immunization. History: [(39-4802) 1978, ch. 240, sec. 1, p. 624; am. and redesignated 1979, ch. 313, sec. 2, p. 846; am. 2021, ch. 263, sec. 2, p. 811.]

## Fees and School Policies

Jr. High Athletic Card	\$25.00	Athletes only
Yearbook	TBD	Optional

## MHJH 7<sup>th</sup> To 8<sup>th</sup> Grade Promotion Procedures/Credits

The Idaho State Department of Education has required that the LEA must implement a credit system no later than grade seven. Idaho Administrative Code IDAPA 08.02.03

### **Attendance**

All students in Mountain Home School District shall be in attendance for at least 90% of the school days each semester. Students enrolled in grades seven through eight (7<sup>th</sup> – 8<sup>th</sup>) in the Mountain Home School District must pass with nine (9) out of twelve (12) credits (80%) in order to be promoted to the next grade level and/or high school. Students will not be allowed to lose a full year of credit in one academic area. Students who do not meet the requirements will have an alternate route for remaining eligible for grade level promotion. If a student needs to recover credits, he/she may obtain credits through summer school, IDLA online courses, or correspondence courses. Parents will be responsible for the tuition of recovery credits.

## Absences For 10 or More Days - All Grades

Due to ADA formula calculations and the less than desirable financial situation of the school district, students absent for **ten (10) days or more** count against the funding received. To help improve this area of school funding, all students who are absent for ten (10) consecutive days will be dis-enrolled from school *whether the absences are excused or not* on the tenth (10th) day. Those students that are hospital bound will need proper documentation to prevent dis-enrollment.

It is the parent/guardian's responsibility to contact the school as soon as possible to notify the school of their child's lengthy absence and to make arrangements to continue the child's education. Students that plan to be gone for 5 or more days need to fill out a leave of absence form. These are available in the office.

Prior to dis-enrolling a student, the school will send an email/letter to the most recent address on file informing the parent/guardian of the impending disenrollment. The email/letter will also inform the parent that the grade at the end of the tenth day will be the grade recorded in the student's cumulative/permanent record.

If a secondary student, especially those students who are in jeopardy of losing credits, withdraws from school ten (10) days before the end of semester, the student will need administrative approval for early completion of the semester.



## **MHSD Promotion Policy for 7th/8th Grades (per year)**

### **Credits Offered**

Mathematics – 1 credit per semester/2 per year

English – 1 credit per semester/2 per year

Science – 1 credit per semester/2 per year

Social Studies – 1 credit per semester/2 per year

Elective – 1 credit each course, per semester/4 per year

### **Promotion Policy**

Students enrolled in 7<sup>th</sup> and 8<sup>th</sup> grade will be required to pass 80% of courses attempted in order to be eligible for promotion to the next grade level. With 12 semester credits offered, this equates to 9 of the 12 semester credits, or 18 of 24 year credits. In addition, students cannot fail all 4 quarters of a year-long class or fail math either semester. Grade level proficiency, assessment scores, GPA and attendance will be considered as an alternate path to promote students who do not earn adequate credit. Students who are not promoted at the end of the school year will be given the opportunity to recover credits through summer school and/or APEX or other approved programs.

### **Alternate Path**

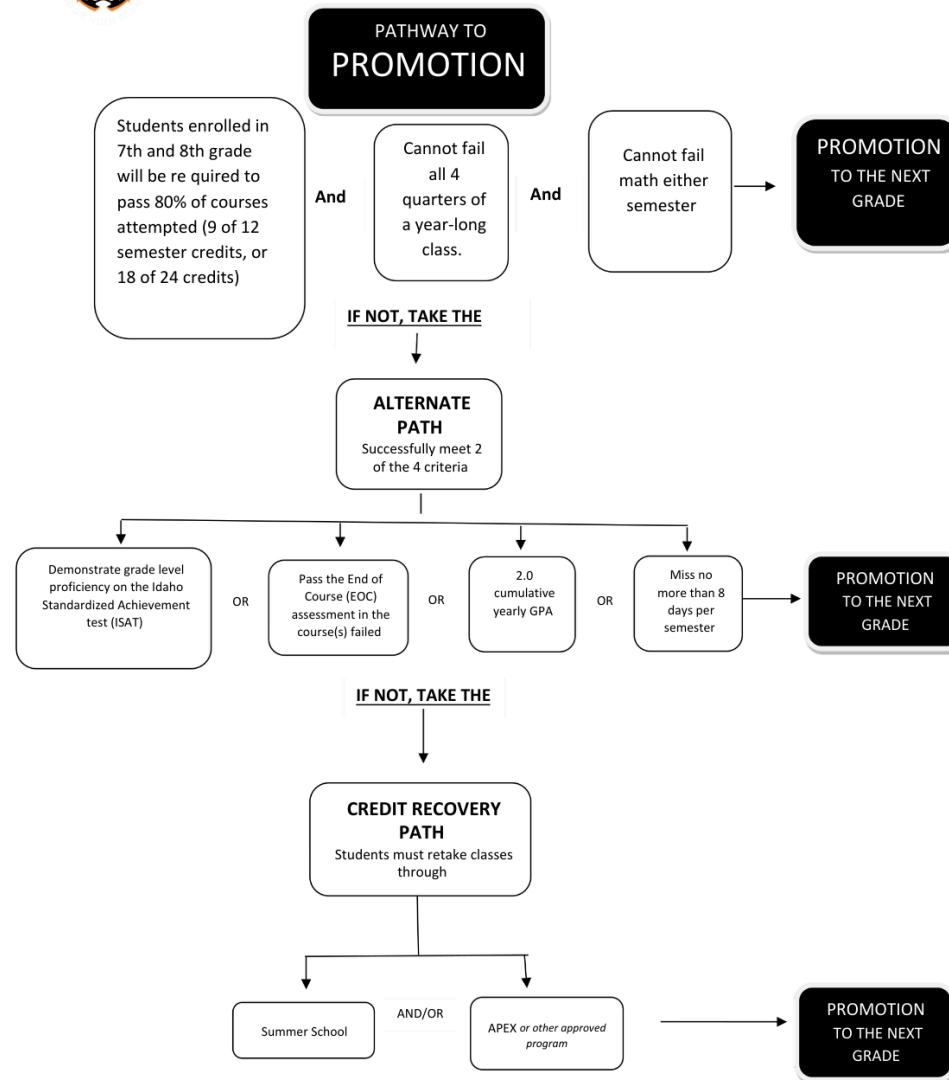
Students not receiving enough credits and/or failing both semesters of a year-long course or are failing math, may still be promoted to the next grade level through our alternate path. Students proceeding through the alternate path must successfully complete 2 of the 4 criteria to be promoted: (1) Demonstrate grade level proficiency on the Idaho Standardized Achievement Test (ISAT). (2) Pass the End of Course (EOC) assessment in the course(s) failed. (3) Pass with a 2.0 cumulative yearly GPA. (4) Miss no more than 8 days per semester.

### **Student withdrawal before end of the semester policy**

Parents must call the school or send a written request to withdraw their student. It is requested that one (1) day notice be given before the student withdraws. Any student checking out before the end of the semester will be given their withdrawal form which includes their transfer grades (grades to date of leaving). This form will be sent with records to the school the student will be attending.



## Mountain Home Junior High School



- Credit Recovery Path will be determined by the IEP or the 504 team for students with disabilities.
- LEP student's promotion will be determined by IELA scores or the Retention/District Team.
- Until the required courses are retaken, students will be retained the previous grade level.
- For consideration to promotion of grade 9, a student must have met the math standards for grade 8.

# Guidance and Counseling

Counseling services are available to all students and are provided on an individual basis, in small groups, and in a classroom setting. These services are meant to assist students in problem solving skills, decision-making, academic achievement, and personal growth.

Each student and parent can seek assistance from the school counselor in:

- **Academic Advising**

The purpose of academic advising is to help students come up with plans that help them to become better students now and in the future. Academic advising topics include organizational skills, study habits, test taking strategies, along with goal-setting. Students who are struggling to maintain satisfactory grades, those wanting to improve, or needing guidance in selecting courses are encouraged to meet with the school counselor.

- **Career Planning**

8th grade students shall complete a Career Exploration course per Idaho House Bill 269. Student's will develop a Career Pathway Plan with the approval of their guardian(s), with advice and recommendations from school personnel, which shall include career exploration courses or workforce discovery activities. The purpose of the Career Pathway Plan is to outline a course of study and learning activities to help students become successful in life. The school shall provide a personalized Career Pathway Plan progress report to the student's guardian which may be sent via electronic communication.

- **Individual and Small Group Counseling**

Students in junior high often find themselves struggling with personal problems and social issues that can interfere with their ability to be successful in the classroom. The role of the counselor is to help students come up with ways to cope with a difficult situation, or guide students toward finding solutions.

## **Limits of Confidentiality/Student Privacy**

Students must trust the school counselor in order to have a meaningful and honest dialogue. Anything a student discusses with the counselor will remain confidential with a few exceptions: when a student discloses intent to harm themselves, intent to harm someone else, or says that someone is causing harm to them. Student safety is a priority; sharing of information is always limited to those individuals who need to know in order to keep the student and others safe. Students will always be informed prior to a disclosure being shared.

## Registration

### **Spring Pre-Registration for 2025/2026 school year**

For students currently in the district and planning to be promoted to grades 7-12, pre-registration will occur late February/early March of 2025.

Students will develop their schedule requests for the next school year. They must select their electives. Alternative subject courses will also be selected. Every effort will be made to provide students with their desired classes.

### **New Student Registration**

For all students who are **BRAND NEW** to this district, registration information is available on our website [www.mtnhomesd.org](http://www.mtnhomesd.org).

**Returning Student Online Registration:** Parents/Guardians are asked to log in to PowerSchool and complete returning student registration forms. This online registration opens May 1, 2025. No Schedules will be given out until some time in the beginning of August and the parent/guardian has completed the online registration process. In person registration starts August 4th, 8:00am to 3:00 pm to help with this in the event that a parent/guardian does not have internet access. You do not need an appointment. No schedule changes will be made after August 19, 2025.

## Bus Transportation

Transportation by bus is serviced for the Mountain Home Public Schools by Caldwell Transportation Company. They are located at 1050 Sunset Strip, and the phone number is **208-587-8045**.

## Food Services

MHJH maintains a closed campus during the lunch period. Hot lunch will be available for students who wish to eat at school. Lunch tickets can be purchased online at [www.MYMEALTIME.com](http://www.MYMEALTIME.com) or at registration in August. Lunch prices can be found on our school district website [www.mtnhomesd.org](http://www.mtnhomesd.org). Some families may qualify for the Free or Reduced Lunch Program. Forms will be available online and at registration. Students may also bring lunch from home. Students may also be able to purchase a variety of other items from the snack bar.



# Mountain Home School District #193

## 2025-2026 Calendar

(Calendar may be subject to change. Updated version can be found on the District website)

<p><b>August</b> 6-7 - PD Day - No School 8-11 - Teacher Workdays - No School 12 - 1st Day of School</p> <p><b>September</b> 1 – Labor Day – No School</p> <p><b>October</b> 10 – End of 1<sup>st</sup> Quarter 16 – Parent/ Teacher Conference 1:30 Dismissal 17 – No School 20 - PD Day - No School</p> <p><b>November</b> 24-28 - Thanksgiving Break</p> <p><b>December</b> 1 - School Resumes 19 – End of 1<sup>st</sup> Semester 22-31 - Christmas Break-No School</p>	<p><b>January</b> 1-2 - Christmas Break-No School 5 - PD Day - No School 6 - School Resumes 19 - Martin Luther King Day &amp; Human Rights Day– No School</p> <p><b>February</b> 6 - PD Day – No School 12 - Parent/Teacher Conference – 1:30 Dismissal 13 - No School 16 - Presidents Day – No School</p> <p><b>March</b> 6 - PD Day – No School 12 – End of 3<sup>rd</sup> Quarter 23-27 - Spring Break - No School</p> <p><b>April</b> 17 - PD Day – No School</p> <p><b>May</b> 20 - End of 2nd Semester - Last day of school 21-22 - PD Days - No School 22 - MHHS Graduation Day - 5pm-Tiger Field</p>
-----------------------------------------------------------------------------------------------------------------------------------------------------------------------------------------------------------------------------------------------------------------------------------------------------------------------------------------------------------------------------------------------------------------------------------------------------------------------------------------------------------------------------	--------------------------------------------------------------------------------------------------------------------------------------------------------------------------------------------------------------------------------------------------------------------------------------------------------------------------------------------------------------------------------------------------------------------------------------------------------------------------------------------------------------------------------------------------------------------------------------------------------------------------------------------------------------------------

## **\*\*ALL COURSES ARE SUBJECT TO CHANGE\*\***

### **7<sup>th</sup> & 8<sup>th</sup> Grade General Electives**

#### **Technology Exploration (4880)**

**Open to: 7<sup>th</sup> & 8<sup>th</sup> grade, semester.**

This course is a survey of computer technologies. This course will include the topics of web design, social media, and an introduction to graphics, animation, computer hardware and operating systems, elementary networking, troubleshooting, and basic programming.

#### **General Art (1059)**

**Open to: 7<sup>th</sup> & 8<sup>th</sup> grade, semester.**

An exploration of the Principles of Design and Elements of Art as a basis for composition. Students will be introduced to a variety of artists, art processes, and materials used in sculpture, drawing, painting, and crafts.

#### **Sculpting (1063)**

**Open to: 7<sup>th</sup> & 8<sup>th</sup> grade, semester.** In this course, students will learn about the history of sculpture, tools and techniques used in the creation of 3-D forms. Students will create sculptures using materials including, but not limited to, clay, plaster, and mixed media.

#### **Strength Training (6008)**

**Open to: 8<sup>th</sup> grade ONLY, semester. Requires Instructor's Recommendation (Mr. Dooley). \*This course is held at the High School.\*** This course is designed specifically with the athlete in mind. Emphasis will be on beginning resistive weight training, conditioning, agility, and sport specific skills. This course requires a Coach's/Class Instructor's Recommendation form and can take the place of the required PE class but will not receive a highschool transcript.

Strength training (resistance training) is a way to build muscles and strength using weights, weight machines, resistance bands or a person's own weight.

### **Journalism (9000)**

**Open to 7th and 8th grade, semester.**

Who? What? Where? When? Journalism provides us with the answers to these questions for the events that affect our lives. In this course, students will learn how to gather information, organize ideas, format stories for news media, and edit their stories for publication. Students in this class will learn the fundamentals of print and online newspaper production. Journalism students will also be given the opportunity to control, create, and produce the content for the school's newspaper once a month. Students will be responsible for the production, design, and publication of the school yearbook. Creating the yearbook is a fun process and the end result of all the effort is a product the students can be proud of.

### **Practical Living (4700)**

**Open to: 7<sup>th</sup> & 8<sup>th</sup> grade, semester.**

Practical Living is a course designed to provide students with the appropriate basic skills and essentials that are necessary for everyday life and the transition into young adolescence. As a result, this class will assist individuals in leading successful, independent, productive futures. This course will build on and provide opportunities to practice and apply learned skills.

### **Intro to Spanish 7/8 (06200)**

**Open to: 7<sup>th</sup> & 8<sup>th</sup> grade, semester.**

The course is intended for students with little or knowledge of the language. The class will cover greetings, numbers, the alphabet, classroom objects, colors, and dates. The goal is for students to be able to conduct simple conversations in Spanish and develop listening, speaking, reading and writing skills. Grades will be based on participation and quizzes.

### **Leadership 7/8 (8043)**

**Open to: 7<sup>th</sup> & 8<sup>th</sup> grade, semester.**

**Must have a 2.5 GPA and a teacher recommendation/vice principal signature.**

Students will study managerial skills, team dynamics, communication skills and principles of good citizenship, **no discipline file**. They will study the characteristics of successful leaders from government, business and the community. Students manage the school recycling program and sponsor fundraisers. Students are also responsible for decorating the bulletin boards in the hallway. **This course is highly recommended for those students interested in Student Council in the future.**

**Library Aide 7/8 (4902)**

**Open to:** 7<sup>th</sup> & 8<sup>th</sup> grade, semester.

**Prerequisite:** Instructor permission.

Library Aides will develop customer service, communication and information retrieval skills as a result of this course. Each Library Aide will also be given a variety of personalized responsibilities and will be graded according to their performance. The role of the student Library Aide is to have a service learning experience as they provide assistance to students and faculty as they help with the successful operation of the media center. Through performance-based assignments, Library Aides learn information and skills they will need to develop life-long information skills as a result of their experience. Students who may wish to take Library Aide should have average grades, be dependable and personable, have **no discipline file** and display appropriate library behavior. Aides receive training in library usage and procedures. *All Library Aides will be required to read one book each nine week grading period.*

**Office Aide 8 (8011)**

**Open to:** 8<sup>th</sup> grade ONLY, semester.

**Prerequisite:** Instructor permission. Students should have average grades, good attendance, and **no discipline file**. Students need to be dependable, outgoing, and personable. They will learn office procedures, courtesy, and may use some of the office machines. Students' primary job is to take messages to students & teachers in classrooms and do some filing along with many other small office tasks.

**Study Skills 7/8 (8014)**

**Open to:** 7<sup>th</sup> & 8<sup>th</sup> grade, semester.

This class is designed to assist students with classroom work to help them meet mastery across all academic content areas. Focus is upon re-teaching of concepts when needed, emphasizing organizational skills which allow each student to successfully monitor and prioritize tasks and assignments due, as well as enhancing study skills and test taking strategies.

**General Choir 7/8 (5501)**

**Open to:** 7<sup>th</sup> & 8<sup>th</sup> grade, year.

**No prerequisite.**

Choral ensembles that focus on the development of choral musicianship. Students will learn proper vocal production and technique, music reading skills, sight-singing skills, and performance. Students will be exposed to a variety of music literature. This is a performance-based class. Participation in concert performance outside of regular class hours is required. Choir allows students the opportunity to learn to sing as appropriate for their vocal needs.

**Beginning Band 7/8 (5516)**

**Open to:** 7<sup>th</sup> & 8<sup>th</sup> grade, year.

**Beginning Band.** The purpose of the Beginning Band is to start students playing a band instrument. Band instruments include all woodwind and brass. Students will study and practice the basics of playing an instrument including how to play the instrument properly, reading notes and rhythms, making a good sound, and playing in an ensemble. The band participates and performs in clinics, band festivals, and school concerts. In most cases, students will need to have an instrument of their own. The music department has a few instruments; however, these are generally the larger, and/or very expensive instruments such as tuba, French horn, bass clarinet, or euphonium. Student attendance and participation in rehearsals and performances both in and out of the formal classroom are required. (Year-long course)

**Intermediate Band 7/8 (5520)**

**Open to:** 7<sup>th</sup> & 8<sup>th</sup> grade, year.

**Prerequisite:** Either Beginning Band or permission from the instructor or at least 1 year of experience. This band serves a dual purpose as a means to train young musicians in the basic elements of music as well as to provide the opportunity to perform in ensembles. The band participates and performs in clinics, band festivals, school concerts, and the Air Force Appreciation Day parade. Student attendance and participation in rehearsals and performances both in and out of the formal classroom are required. An instrument is required. (Year-long course)

**Percussion 7/8 (5522)**

**Open to:** 7<sup>th</sup> & 8<sup>th</sup> grade, semester.

**Beginning Percussion Class.** This class is for beginning band students who are interested in playing percussion instruments. In this class, students will learn the basic techniques and fundamentals that apply to playing snare drum and keyboard percussion instruments as well as a variety of auxiliary instruments. Students will also learn basic musical elements such as notes and rhythms and will perform as part of the Jr. High Band at concerts and festivals throughout the year. Student attendance and participation in rehearsals and performances both in and out of the formal classroom are required. (Year-long course)

## 7<sup>th</sup> Grade Required Courses

### English

#### **English 7 (3002)**

**Open to: 7<sup>th</sup> grade, year. Required**

The course is designed to promote students' understanding of grammar usage and mechanics, necessary for speaking and reflecting critically on their own use of language. Students engage in writing in journals to generate ideas and prior knowledge; construct writings for different audiences and purposes; respond to literature by generating writing reflections; strengthen listening, speaking and note-taking skills utilizing the Cornell format; collaborate with peers to support the learning of others through inquiry.

#### **Language Acquisition 7/8 (8003)**

**Open to: 7<sup>th</sup> & 8<sup>th</sup> grade, year. IELA scores/Teacher Placement.**

Students in this course will focus on gaining English language proficiency and academic language in order to be academically successful. Student placement in this class will be determined by the counselor/teacher of the course.

### Math

#### **Math 7 (5002)**

**Open to: 7<sup>th</sup> grade, year. Teacher Placement**

Students enrolled in Math 7/Course 2 study the core standards of ratio and proportional relationships, the number system with operations with rational numbers, using expressions and equations, geometry with angle measure, surface area and volume. The students will investigate the change process and look at probability models. Students will compare populations and draw inferences based on statistical measures. Students will use mathematical practices of persevere, abstract reasoning and modeling with mathematics. The class will also include the mathematical practices of the use of appropriate tools, attending precision, constructing viable arguments and looking for patterns in repeated reasoning.

#### **Pre Algebra 7/8 (5006)**

**Advanced Math Course for 7<sup>th</sup> grade, pre-algebra concepts (or higher), year. Teacher Placement**

Students will be placed in this class by teacher recommendation. The students will study the core standards from 7<sup>th</sup> & 8<sup>th</sup> grade. These standards include the number system, expressions and equations, functions, geometry, and statistics/probability. The topics include, but are not limited to, conceptual building blocks of algebra, basic operations with rational numbers, solving two-step equations, graphing and writing linear equations, use and application of Pythagorean Theorem and special right triangles, basic geometric measurements for perimeter, area and volume and statistical measurements and graphical representation of data. The State of Idaho requires pre-algebra concepts (or higher) for all 8<sup>th</sup> grade students.

**Math Skills 7/8 (8070)**

**Open to: 7<sup>th</sup> & 8<sup>th</sup> grade, year. Teacher Placement**

A math intervention program designed to address the needs of struggling students that focuses on enhancing and strengthening the students mathematical foundation and understanding. This class will be required for students that have been identified as being behind by a Placement Test, teacher recommendation, or grade from previous year.

## **Science**

**Life Science 7 (6501)**

**Open to: 7<sup>th</sup> grade, year.**

This class presents a scientific study of the structure and function of living organisms and their biological relationships. Emphasis is placed on scientific problem solving, characteristics of life, structure and function of cells, genetics/heredity, structure and function of the human body systems, laboratory dissections and related activities.

## **Social Studies**

**World Geography 7 (7031)**

**Open to: 7<sup>th</sup> Grade, year.**

Students will develop an understanding of their world by studying the geography, history, and culture, both past and present, of the people and nations of the world. Emphasis will be on the nations of the Eastern Hemisphere.

## Health

### Health 7 (4801)

**Open to: 7<sup>th</sup> & 8<sup>th</sup> grade, semester (Required elective, students must take it either their 7<sup>th</sup> or 8<sup>th</sup> grade year).**

This course is to teach students the principles of healthy living. In compliance with the state and national health standards, students will practice and apply the following skills throughout the semester:

1. Analyzing influences that impact health.
2. Accessing valid health information.
3. Interpersonal communication skills.
4. Decision making skills to enhance healthy behavior.
5. Goal setting skills to enhance ehealth.
6. Health-enhancing behaviors.
7. Health advocacy.
8. Enhancing self-esteem.
9. Emphasize character education.

## Physical Education

### Physical Education 7/8 (6001 boys, 6002 girls)

**Open to: 7<sup>th</sup> & 8<sup>th</sup> grade, semester. One semester is required for 7<sup>th</sup> & 8<sup>th</sup> grade every year by the state.**

Junior High PE is a place where you will get to explore a wide variety of sports and independent activities. The goal of this program is to have fun all while learning how to increase your overall health and wellbeing! Each new activity will come with instruction and practice, so don't worry if you are not familiar, we're here to help you learn and grow! We can't wait to have you as a student!

Students will be required to dress down daily for Junior High PE. This means you have a separate outfit/athletic attire to be worn during PE and change back into your regular clothing before going to your next class. Time will be given for this. You will provide this outfit and it must meet the school's dress code; no volleyball spandex, spaghetti straps, etc. Athletic shoes will also need to be worn, no flip flops, dress shoes, boots, etc.



## 8<sup>th</sup> Grade Required Courses

### English

#### **8<sup>th</sup> Grade English (3004)**

**Open to: 8<sup>th</sup> grade, year.**

Students will work through the steps of the writing process to address a variety of writing genres. Students will also develop proper use of grammar and standard language conventions. They will apply structure and mechanics to their own writing and recognize it in others'. Students will also read a wide range of literary genres, including novels, short stories, poetry, and plays, from classic works to contemporary pieces. Through these texts, they will explore characterization, engage in critical discussions, and engage with a variety of literary devices, as well as plot structure and theme.

#### **Language Acquisition 7/8 (3001)**

**Open to: 7<sup>th</sup> & 8<sup>th</sup> grade, year. IELA scores/Teacher Placement.**

Students in this course will focus on gaining English language proficiency and academic language in order to be academically successful. Student placement in this class will be determined by the teacher of the course.

### Math

#### **Pre Algebra 7/8 (5006)**

**Open to: 8<sup>th</sup> grade. Pre-Algebra concepts for all 8th grade students. 7th grade by teacher recommendation only.**

The State of Idaho requires pre-algebra (or higher) for all 8th grade students. The students will study the core standards from 7<sup>th</sup> & 8<sup>th</sup> grade. These standards include the number system, expressions and equations, functions, geometry, and statistics/probability. The topics include, but are not limited to, conceptual building blocks of algebra, basic operations with rational numbers, solving two-step equations, graphing and writing linear equations, use and application of Pythagorean Theorem and special right triangles, basic geometric measurements for perimeter, area and volume and statistical measurements and graphical representation of data. The State of Idaho requires pre-algebra concepts (or higher) for all 8th grade students.

### **Integrated Math A/B (0250)**

**Honors/Advanced Math Course for 8<sup>th</sup> grade**

**This course replaces Algebra.** Students will learn to interpret the structure of expressions, create and solve equations, inequalities, and system of equations; understand, interpret and analyze these functions using function notation; experiment with transformations in the plane, make geometric constructions, prove theorem algebraically; and summarize, represent and interpret data.

### **Math Skills 7/8 (8070)**

**Open to: 7<sup>th</sup> & 8<sup>th</sup> grade, year. Teacher Placement**

A math intervention program designed to address the needs of struggling students that focuses on enhancing and strengthening the students mathematical foundation and understanding. This class will be required for students that have been identified as being behind by a Placement Test, teacher recommendation, or grade from previous year

## **Science**

### **Physical Science 8 (6502)**

**Open to: 8<sup>th</sup> grade, year.**

In this course, students will be introduced to the basics of chemistry and physics. We will study the elements that make up our world and some of the ways that they react to other elements. We will also learn basic properties of matter, laws of motion, rocketry, and electricity. This course is divided into two parts: approximately 60% of the time, students are involved in lecture, independent work, or classroom demonstrations. The remaining part of the time is spent in lab experimentation where students are allowed to experience the various ideas and concepts discussed in class.

## **Social Studies**

### **Social Studies 8 (7002)**

**Open to: 8<sup>th</sup> grade, year.**

The class will cover United States History from European exploration of the Americas to World War II. During the class we will be exploring the significance of events in America's past, how they have shaped the present, and how they may impact our future. We will also discuss and work on skills, techniques, and strategies to help the students become successful throughout their educational experience. Throughout the year students will develop civic competence and focus on learning the civic responsibilities of American Citizenship.

## **Career Exploration**

### **Career Exploration (2203)**

**Open to 8th grade only, semester. Required elective.**

8th grade students shall complete a Career Exploration course per Idaho House Bill 269. Student's will develop a Career Pathway Plan with the approval of their guardian(s), with advice and recommendations from school personnel, which shall include career exploration courses or workforce discovery activities. The purpose of the Career Pathway Plan is to outline a course of study and learning activities to help students become successful in life. The school shall provide a personalized Career Pathway Plan progress report to the student's guardian which may be sent via electronic communication.

## **Physical Education**

### **Physical Education 7/8 (6001 boys), (6002 girls)**

**Open to: 7<sup>th</sup> & 8<sup>th</sup> grade, semester. One semester is required for 7<sup>th</sup> & 8<sup>th</sup> grade every year by the state.**

Junior High PE is a place where you will get to explore a wide variety of sports and independent activities. The goal of this program is to have fun all while learning how to increase your overall health and wellbeing! Each new activity will come with instruction and practice, so don't worry if you are not familiar, we're here to help you learn and grow! We can't wait to have you as a student!

Students will be required to dress down daily for Junior High PE. This means you have a separate outfit/athletic attire to be worn during PE and change back into your regular clothing before going to your next class. Time will be given for this. You will provide this outfit and it must meet the school's dress code; no volleyball spandex, spaghetti straps, etc. Athletic shoes will also need to be worn, no flip flops, dress shoes, boots, etc.

## **Sports And Things To Join**

### **SPORTS**

- ✓ Boys Basketball
- ✓ Girls Basketball
- ✓ Cheerleading
- ✓ Cross Country
- ✓ Football
- ✓ Track & Field
- ✓ Volleyball
- ✓ Wrestling

### **CLUBS**

- \*Dungeons & Dragons Club
- \*Chess Club

**gTigers!**