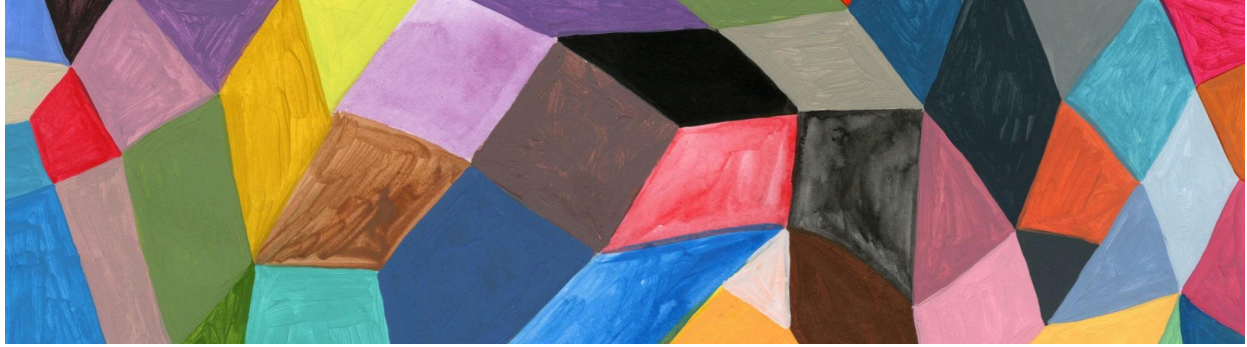


REJ Resources



SLLC REJ Committee Resources

Support and Assistance

Mental Health and Wellness

- [Counseling & Mental Health Services](#)
- [University Chaplains](#)
- [LGBTQ+ Health and Wellness](#)

Basic Needs and Financial Support

- [Campus Pantry](#)
- [Terp Dream Crisis Fund](#)
- [Terp Tax](#)
- [Terp to Terp Campus Reuse Store](#)

Accessibility and Disability Services

- [Campus Accessibility & Disability Services Office](#)

Education and Training

Academic and Pedagogical Resources

- [TLTC: Equity & Inclusion](#) University of Maryland
- [Inclusive Teaching Toolkit](#) University of Chicago
- [Teaching in a Time of Conflict](#) University of Pittsburgh

- [Guidelines for Discussing Difficult or High-Stakes Topics](#) CRLT University of Michigan

Training Resources for Anti-racist Classes

Creative and Reflective Tools

- [Beautiful Trouble, Toolbox](#)
- [Artists on the Frontline](#)
- [Judy Pace's Teaching Controversies Framework](#)

Audio-Visual Resources

- Navigating Challenging Advising Conversations - PASSWORD PROTECTED
- [Political Diversity in the Classroom](#)
(Recorded session with Devin Ulm and Danielle Bonatesta – 58 mins)
- [Trauma-Aware Pedagogy](#) (Recorded session with Toya Jones and Lizette Muñoz Rojas – 75 mins)

Legal and Rights Awareness

Legal Support and Immigration Services

- [Immigrant and Undocumented Student Office](#)
- [Graduate Student Legal Aid](#)
- [National Immigration Legal Services Directory](#)
- [Casa – Maryland](#)
- [Amica Center for Immigrants Rights](#)

Rights and Advocacy

- [Know Your Rights Flyers](#)
- [Videos about Rights](#) (best for educators working with small children)
- [NILC - Know Your Rights](#)
- [CASA - Know Your Rights](#)
- [Know Your Rights Workshop](#): Mexican Consulate for Mexican citizens

Inclusive Excellence and Support

University Programs and Resources - Faculty and Staff

- [ADVANCE Program](#)
- [Search Committee Resources](#)
- [Families, Caregivers, and Parents Resources](#)
- [Faculty Ombuds](#)
- [Staff Ombuds](#)
- [ISSS - International Student and Scholars Office](#)
- [International Travel Safety](#)
- [President's Alliance on Higher Education and Immigration](#)

General Community Support

- [Southern Management Leadership Program](#)
- [PLUMAS Student Organization](#)