



Contents list available at: <https://journals.unisba.ac.id>

**Amwaluna: Jurnal Ekonomi dan Keuangan Syariah**

Journal homepage: <https://journals.unisba.ac.id/index.php/amwaluna>



## Amwaluna: Jurnal Ekonomi dan Keuangan Syariah

(The title of the article should be clear (not ambiguous) and identifying the content. The title's format uses Times New Roman 16 Bold, Centered Alignment, and must be Capitalized Each Word. It is one space with 0pt spacing (before) and 12pt spacing (after).

**Author<sup>1\*</sup>, Author<sup>2</sup>**

**(Without honorary name or degree and should be written in full name)**

The affiliation is written in full name (not abbreviation) and complete address just as the example below:

<sup>1,2</sup> Sharia Banking Study Program, Faculty of Sharia, Universitas Islam Bandung, Indonesia.

### Abstract

*The abstract is written in English. The abstract should be in one paragraph with no more than 250 words containing: background, purpose, method, result, and conclusion. It uses Times New Roman 11, single space, and italic.*

**Keywords:** *It is a maximum of 5 keywords in English with apparent meaning. The keywords are separated by a semicolon (;).*

### Article Info

**Paper type:** *Research paper or Conceptual Paper*

*Received: September 21, 2022*

*Revised: January 08, 2023*

*Accepted: January 20, 2023*

**\*Corresponding author:**

**[email](#) corresponding author**

**Amwaluna:  
Jurnal Ekonomi dan  
Keuangan Syariah**

**Vol. 7, No. 1, 2023, 1-11**

### Cite this document: APA 11th edition

Srisusilawati, P. Eprianti, N. (2023). Kajian Komunikasi pemasaran terpadu dalam mendorong keputusan pembelian jasa perbankan. *Amwaluna: Jurnal Ekonomi dan Keuangan Syariah*, 7 (1), 1-17.

<https://doi.org/10.29313/amwaluna.v7i1.....2>

## 1. Introduction

The introduction contains research background, brief description of literature review from previous researches (State of the art) to show the limitation of previous research, the expected goals, the renewal of research. It is in Times New Roman 12. Unlike research report, the literature review should be in the form of previous studies (state of the art) to show the renewal of the scientific article.

## 2. Literature Review

The literature review contains descriptions of theories, findings and other research materials obtained from the reference materials used as the basis of the research.

### 3. Methodology

It contains the research design, population, sample, data collection and analysis techniques, in Times New Roman 12. There is no need to present research methods for conceptual articles/literature studies, only Literature Reviews, results and discussion immediately after the introduction.

### 4. Results And Discussion

The result of the article contains the data analysis written descriptively using Times New Roman 12. Tables and figures in each article is three (3) at most, B&W, not colorful. Discussion presents each of the findings compared to relevant theories or previous studies, actual facts, comments, and reasonable analysis from researchers.

The utilization of sub-chapter in discussion corresponds to the needs of discussion.

For instance:

Sub Chapter 1 (Times New Roman 12, bold)

Sub Sub Chapter 1

Sub Sub Chapter 2

Sub Chapter 2 (Times New Roman 12, bold)

Sub Sub Chapter 1

Sub Sub Chapter 2

Sub Chapter 3 (Times New Roman 12, bold)

Sub Sub Chapter 1

Sub Sub Chapter 2

Tables and figures should be incorporated in the text as close to the reference as possible and should be in a form suitable for publication when printed with a good quality laser printer. Figures will be printed in black and white and should be readily interpreted without the use of color. Tables and figures may extend across both columns. Captions should be Times New Roman 11-point, centered. Tables and pictures should be sequentially numbered in separate series. Captions for tables should be above the table. Captions for figures should be below the figure. Tables contains primary source should not be captioned.

*Figure*

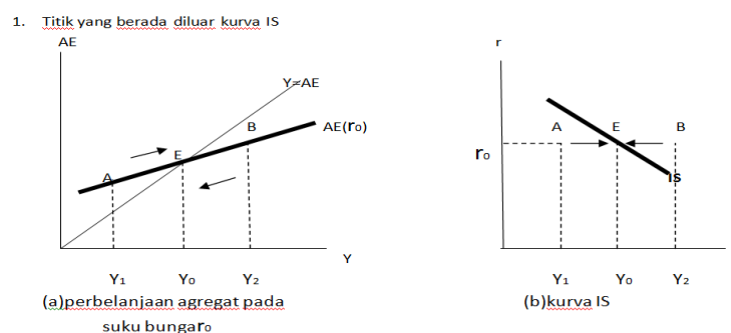


Figure 1. IS Curve

*Tables*

Table 1. The Growth of Islamic Banks and Conventional Banks Number Year 2013 – 2017

Group of Banks	2013	2014	2015	2016	2017
Islamic Banks	11	12	12	13	13
Conventional Banks	120	119	118	116	115
Islamic Business Units	23	22	22	21	21
Islamic Rural Banks	163	163	163	166	167

Source: Indonesia Banking Statistics (2013-2017)

#### Mathematical Formula

Mathematical formulas should be numbered and clearly presented using Microsoft Equation:

$$f(x) = a_0 + \sum_{n=1}^{\infty} \left( a_n + b_n \sin \sin \frac{n\pi x}{L} \right) \quad (1)$$

### 5. Conclusion

It contains a conclusion and suggestion. The conclusion briefly illustrates the results that address the hypotheses and research purposes or findings. The summary of the research and discussion relevant to the findings, presented descriptively, not numeric. Suggestion provides things expected to conduct related to further ideas the research has proposed.

#### Author contribution statement

CRedit (Contributor Roles Taxonomy) was introduced with the intention of recognizing individual author contributions, reducing authorship disputes and facilitating collaboration.

#### Acknowledgements

These people who need to be mentioned in the Acknowledgments section are those who have assisted in the research process and the preparation of the article. Most academic papers have people who have helped in some way in the preparation of the written version or the research itself. It can be from sponsoring institutions, donor agencies, other researchers, or even family, friends or colleagues who have helped in the preparation.

### References

Every text source should be listed in reference, and the references are included in the body of the text. All sources appearing in the reference list must be ordered alphabetically by surname. It should contain reference literature from primary resources (e.g., the scientific journal with DOI), and at least 80% of them are published in the last 10 (ten) years. Each of the articles should have at least 20 references. It is suggested to use a reference manager (e.g., Mendeley, Zotero, RefWorks, Endnote, etc.) to write the text and citation. The format of writing the references uses APA 7th edition (American Psychological Association). All citations must be hyperlinked with references. For help, see this video <https://youtu.be/p9YRwyQdWWI>

#### Information:

Amwalun: Jurnal Ekonomi dan keuangan Syariah template changed for the better since vol. 7 no 1 in 2023.

The previous template is in the following link

<https://docs.google.com/document/d/1lyJ5KuJiWr7nhEQXwjid4wiTpi0633uQTvk0VYtnXwQ/edit>