

Artist Credits ♡ for Channel Designs and Artworks

Please **do not** reference my overlays (podokko's designs) or heavily reference **any branding specific** artworks (ruins / city crossover / world designs,, color palette, motif combination, lore writing, VTuber design, specifically) out of respect for me and my artists. My brand and persona go way back. My online persona and *concept* dates back to early 2000, and my OC was officially created in 2005. The bunny ears were not added until 2020. My first VT model of the OC was first produced in 2020. My lore was fully written by me in 2021, it references real life events with a touch of fantasy.

Don't use me as a reference please.

Branding direction is by me.

Various Twitter posts will have credit under parent post to ensure original does not get excessively pinged.

Brand direction thread: (updated 12/14)

<https://twitter.com/everdepths/status/1535517249615929344>

Trigger warning: death

Status: 2.0 Model in Progress (Last updated 7/18/2024)

—

All concepts & Art Direction: Me

1.0 Rig: <https://twitter.com/2wintails>

1.0 Art: <https://twitter.com/No24Androidstu1>

<https://twitter.com/WhiteCoffin>

1.0 Vbrider + Face adjustments: <https://twitter.com/justNovaj>

Bunny model: <https://twitter.com/naichie> / Bunny Rig: <https://twitter.com/Alkanimate>

WF Atelier/Mermaid model Art: https://twitter.com/Aono_99

WF Atelier/Mermaid model Rig: <https://twitter.com/Raddleii>

Blue Rose Model II Art: <https://twitter.com/marchemis> (honk model)

Design: Anya / <https://twitter.com/DreamingAnya>

Chibi PNG Model Art: https://twitter.com/shinyo_yukino

Chibi L2D sitting model: https://twitter.com/saru_rkgk

Stained Glass Model Art: completed May 2023, TBA

Stained Glass Model Rig : <https://x.com/46cm>

Twitter aesthetics



Twitter Profile picture:

<https://twitter.com/hoja1214>



https://twitter.com/tsuyu_ks

Twitter Header:

I commissioned

https://twitter.com/yura_inaho

For my Twitter header of my 4 bunnies, Yuely, Gaelia, Luca, Zen



Twitch aesthetics (please do not reference my branding)



New Offline screen by Makrustic (beautiful art style)

Art Commissioned April 2023

<https://twitter.com/MakDeetsMuch>

Lore Characters & concept by depths

Design is based off stream design from a long time ago by me.

Please do not reference this artist or overlay.

Profile picture on several other social media platforms is by chandega
Special commercial commission and all pieces requested are of me
Pixiv 13607508



Music Composers:

<https://twitter.com/damahysk>

<https://twitter.com/Enokido8>

Video overlays on Twitch/Youtube are by **podokko**

Schedule is by **podokko**

<https://twitter.com/podokko>

Upcoming schedule graphics and stream overlays are also by **podokko**.

Do not reference my schedule or stream overlays.

Commercial logo and color overlay is by **podokko**.

The raid/host, donate sounds are from **Tofie**

<https://twitter.com/TOFIEmusic>

Just Chatting screen is with OBS color filter commissioned from
https://twitter.com/Rabbit_moti77

The looping, falling Snow in the scene is from **Seol**
<https://twitter.com/teacuppity>
<https://ko-fi.com/teacuppity/shop>
<https://ko-fi.com/s/122d131473>

My in-game overlay is by **Sieu** or Podokko
<https://twitter.com/sieusui>
Please note that my bunny cam is blocking over the webcam overlay of the design and the green comment section has been extended.

My chat text box is from **Seol & WonderPenguin**
<https://twitter.com/teacuppity>
<https://twitter.com/WonderPenguin>
<https://ko-fi.com/teacuppity/shop>
It's called **Debug: Dive**

The falling particles that are over placeholder screen is called
Flickering Glass by **Seol**
<https://ko-fi.com/s/559dc33a1c>



Commissioned in 2019, completed March 2020. Please no heavy referencing.

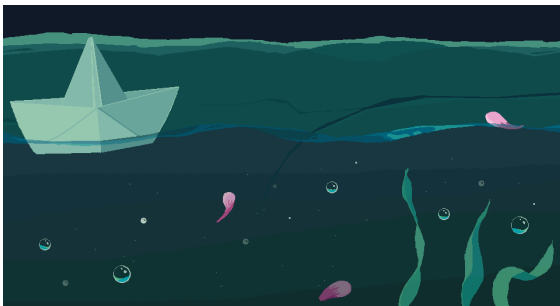
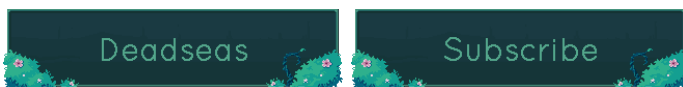
My (deadseas/depths) Twitch.Tv Offline Banner, Animated Background, Three-part Image, and Panels are commissioned from **Tamajoshi** via Fiverr. He was absolutely wonderful to work with (SUPER sweet) and fulfilled every single request I made (which was *a whole lot* of detail). I gave him tons of reference, and a specific color palette but I can say that his style is highly flexible and he can work with literally every single color. He is amazingly talented. All of my friends love his work. He streams on Facebook too and he's extremely knowledgeable about his craft.. 🙏🏻?

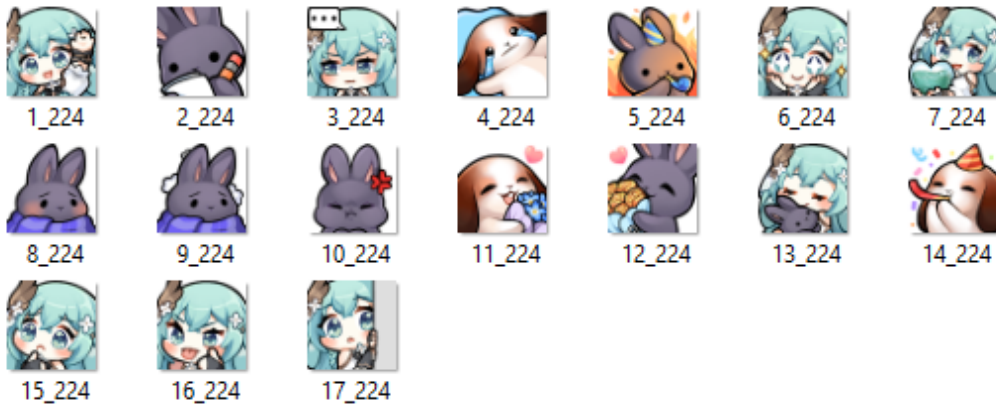
Tamajoshi's Facebook: <https://www.facebook.com/tamajoshi>

Tamajoshi's Instagram: <https://www.instagram.com/tamajoshi/>

Tamajoshi's Twitter: <https://twitter.com/tamajoshi88>

Tamajoshi





These Twitch Subscriber emotes are by **Akaibara / Joyo!**

Joyo's Website: <https://www.akaibara.com/>

Joyo's Twitter: <https://twitter.com/akaibara>

Absolutely lovely to work with, perfect personal touches~ Thank you so much! I cannot stress enough how wonderful she is. She has a great eye for transforming the ideas into legible emotes for the size Twitch uses. Incredibly sweet person too, and she posts a lot of cute stuff on her social media!!

The emote animator of the ABOVE emotes from illustrator Joyo is animator

NotChaott

<https://twitter.com/NotChaott>



Commercial request from [https://twitter.com/yuriika draw](https://twitter.com/yuriika_draw)

Stained Glass:

Design: Me & Dreaming Anya

Beige Hair OC's

Design: <https://twitter.com/DreamingAnya>

—

<https://twitter.com/DreamingAnya>

Writer's: https://twitter.com/Aono_99 **Aono**

Music box: <https://twitter.com/DreamingAnya>

<https://twitter.com/DreamingAnya>

Beige: https://twitter.com/Aono_99 **Aono**



My current Twitch Subscriber badges are from **Yan** or **Hatomori**! She is a wonderful illustrator who worked with a clear timeline, and her aesthetic is super duper cute. I can't recommend her enough as a badge artist AND she has premade badges available on Etsy!! They're super legible when Twitch sub badges go as low as 18x18 px. Again, her style is super wonderful and unique~ I had very clear ideas in mind when it came to these badges, and she executed it perfectly from my references.

Twitter: <https://twitter.com/hatomori>

Her Etsy shop: <https://www.etsy.com/shop/hatomori/>

Carrd: <https://hatomori.carrd.co/>



My new badge assets are by Hatomori as well but now she goes by **Yanpans**

Twitter: <https://twitter.com/yanpans>

Etsy: <https://www.etsy.com/shop/yanpans/>

Ideas are mine and some are loosely based off 2.0



My Twitch Subscriber emotes (dpthsLove, dpthsSip, dpthsKnife, dpthsLUL, dpthsZzz) and Twitch Bit emote (dpthsAngel) are commissioned from **Saptan** via Fiverr.

She was very responsive when I initially contacted her. I love her emote style, so do all of my subs. I cannot stop getting compliments over the emotes.

Saptan's Fiverr: <https://www.fiverr.com/saptan/create-custom-twitch-emotes-for-you>



Twitch Subscriber Tier 1 Emote: dpthsZOOM

<https://www.twitch.tv/khiren>

She is a fellow vtuber, and I love her content. Not only is she a great content creator and her model is super cute, but she does emote commissions as well~ Go check her out!!

Emotes: @chiikadayo

Emote animation: @subwuf @maddemian1



My old Twitch Subscriber badges and more notably, my Discord's signature heart emote, are commissioned from **elok_studio** via Fiverr. Elok is very professional and worked with my request involving glass textures to make sure I was super pleased. She does unlimited revisions and her prices are very good. If you look at past reviews, her past works are super detailed and nice. She really puts in the extra effort to make sure your badge is legible on Twitch, and it's hard working with such a small size of 18 x 18 px. :]

Elok's Fiverr: https://www.fiverr.com/elok_studio/make-a-high-quality-sub-badge



My Twitch Subscriber emotes dpthsPat dpthsHmm & dpthsFlower are from CAOSheep, who is only available on Etsy! Very cute coloring and looks to be quite a reasonable price <3

CAO's Etsy: <https://www.etsy.com/people/nlqoo6ky7sd3b31k>

CAO's Website: <https://caotama2103.wixsite.com/my-site>



My Twitch Channel points art is from LuniethDesign:
Etsy: <https://www.etsy.com/people/LuciaPumpInk>
She customized it for me. :)



My PNG Chibi Vtuber is from
https://twitter.com/shinyo_yukino
(Commercial request)

My Twitch Subscriber emotes for Twitch & Discord are by

twitter.com/eelsoup



My floral sub counter is by:

<https://ko-fi.com/yamiyoukii>

My Vtuber room is by:

<https://twitter.com/ArtNailum>



dpthsBHOP

dpthsDance

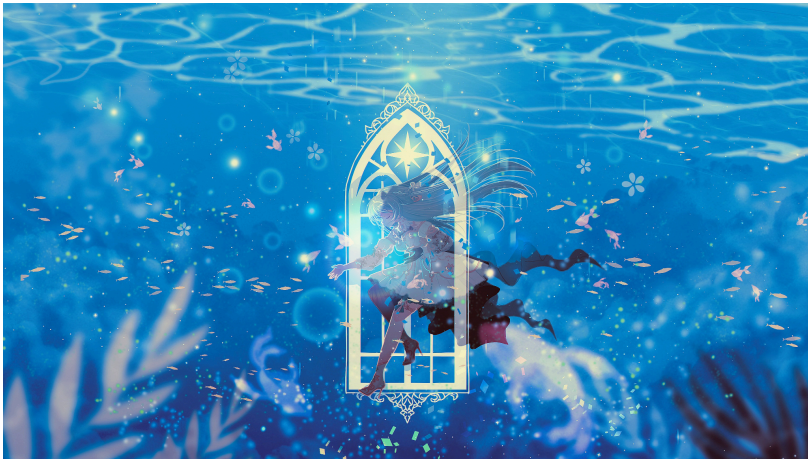
dpthsFlail

dpthsFloat

dpthsGun

These emotes are by:

<https://twitter.com/VioletSketches>



Commercial pieces by reinforced pixiv 12355624

Credits ♡

<https://www.twitter.com/no24androidstu1>

<https://twitter.com/2wintails>

<https://twitter.com/justNovaj>

Concept arts for models: Me

References & Designer for "Music Box, Writer's Outfit 1 & 2" : <https://twitter.com/DreamingAnya>



Various hand assets for 1.0 Design:

<https://twitter.com/9fayu6>

Bunny holding asset for L2D model is by
<https://twitter.com/ReLaBOfficial/>