

# San Jacinto Hike (Backpacking Overnight)

## Overview

<b>Start Date:</b>	June 10, 2023	<b>How many miles is it?</b>	9.92 miles
<b>End Date:</b>	June 11, 2023		
<b>Trailhead Meet Time:</b>	7:00am	<b>Difficulty Level:</b>	Challenging
<b>Hike End Time:</b>	2:00pm	<b>Max Climb Rate:</b>	463 ft/ mi
<b>Nearest Address Location:</b>	1 Tram Way, Palm Springs, CA 92262		

**Weather Forecast Search:** Mt. San Jacinto (MSJC1)

**Other Details:** This is a combo hike with both backpacking and a peak day hike. Check in with the Ranger at Mountain Station before hiking to the campsite. Stream water is typically available by the camp (confirm this with a Ranger before you rely on it). You will need to purify stream water before drinking it. **You will need to secure a camping permit/ reservation for the Round Valley campsite online before your trip** (link below).

## Trail Plan

Trail Location	Elevation		Miles		Hiking Hours			
	At Points	Gain	Between Points	Cum	Elev Allow	Mileage Allow	Total	Cum
1 Mountain Station	8538	0	0	0	0	0	0	0
2 Round Valley Campground	9067	529	1.93	1.93	0.53	0.965	1.49	1.49
3 Wellman Divide Junction	9716	649	0.85	2.78	0.65	0.425	1.07	2.57
4 San Jacinto Peak	10834	1118	2.18	4.96	1.12	1.09	2.21	4.78
5 Wellman Divide Junction	9716	0	2.18	7.14	0.00	1.09	1.09	5.87
6 Round Valley Campground	9067	0	0.85	7.99	0.00	0.425	0.43	6.29
7 Mountain Station	8538	0	1.93	9.92	0.00	0.965	0.97	7.26
Total Hiking Mileage				9.92		Total Hiking Hours		7.26

463 ft/ mi

This is best managed as a three day weekend. Here is a sample plan:

Arrive at Palm Springs Aerial Tram: Saturday at 7:30am

Purchase Group Tickets and Take First Tram to Mountain Station (8:00am First Tram)

Hike from Mountain Station to Round Valley Campsite: 1.93 miles

Day Hike to San Jacinto Peak (10,834 ft): 6.06 miles round trip

Spend the night at Round Valley Campsite

Hike from Round Valley Campsite to Mountain Station: 1.93 miles

Total Hiking Miles: 9.92

Last tram down on Sunday leaves at 9:45pm

## **Driving Directions to Trailhead**

99.3 total driving miles

1 hour, 36 minutes from 90703

CA-91 East to CA-60 East

CA-60 to I-10 East

Use the RIGHT two lanes to take exit 111 for CA-111 towards Palm Springs

Turn RIGHT onto Tram Way

Palm Springs Aerial Tram Info:

1 Tram Way Palm Springs, CA 92262

Phone: (888) 515-8726

\$5.00 for parking

\$29.95- Adults

\$16.95- Children 3-10

You can also call them and see if you can negotiate a Group Rate discount.

## **Other Resources**

Palm Springs Aerial Tramway: <https://pstramway.com/>

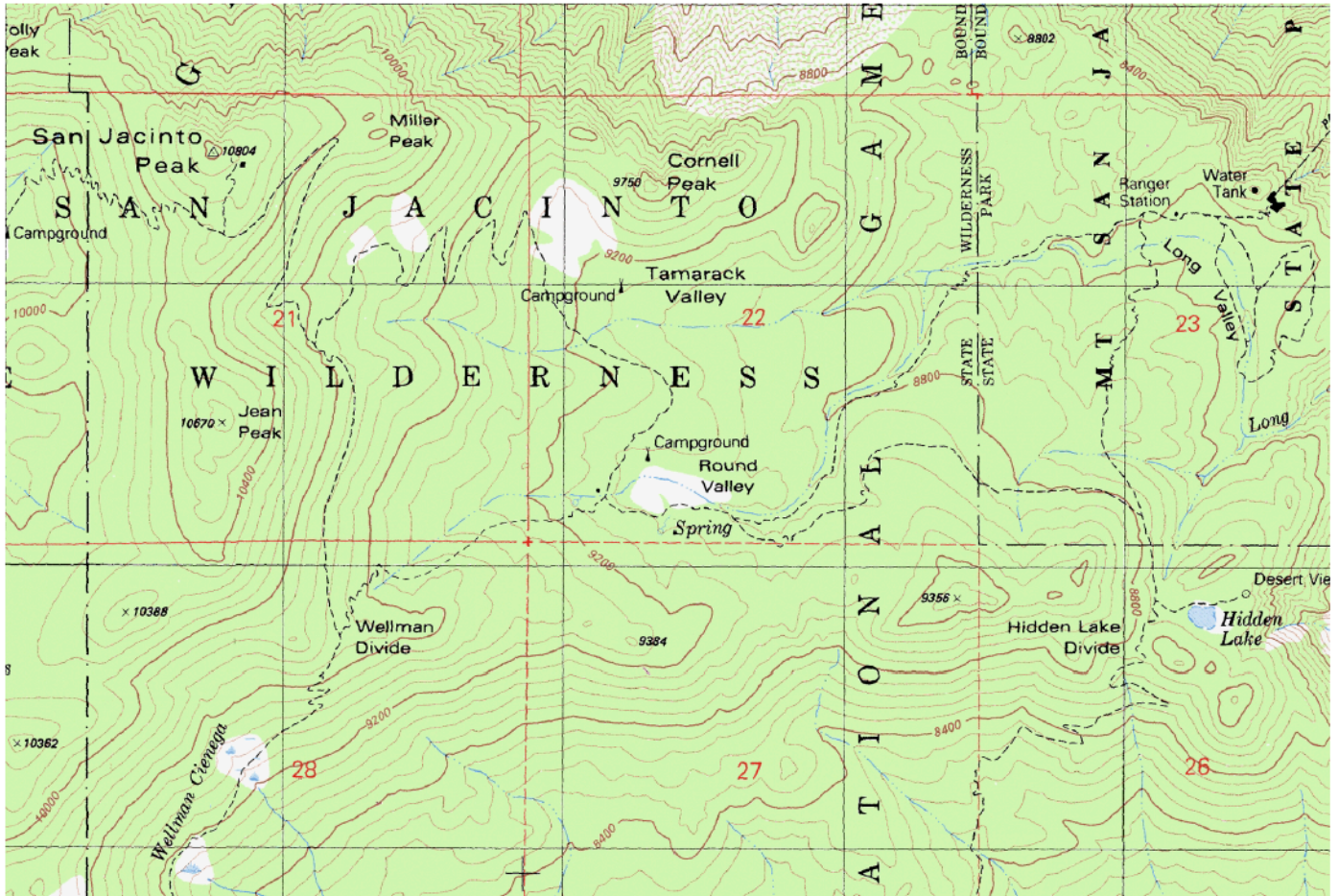
Camping Permit: [www.parks.ca.gov](http://www.parks.ca.gov)

Topographical Maps: <https://caltopo.com/map.html>

Weather: <https://www.weather.gov>

Trail Plan: <https://www.mapmyrun.com/routes/view/1502534482>

<https://www.mapmyrun.com/routes/view/1502538946>



Mercator Projection  
WGS84  
USNG Zone 11SNT  
CalTopo.com

