

# Boys Planet Vocal Tier List (KVA)

This is based on KVA criteria that place the extent of support and the quality of support the main defining factor in an idol's placement in the list. This is a tier list **based on technique**, not preference of **vocal colour** or the way they convey the **emotions** of the song. Those aspects are much more subjective, although I will comment on these aspects if they are noteworthy qualities within their singing. (does not affect their placement)

Context for tiers:

**Above Average** – Similar Level to Nmixx's Lily and Haewon, or NCT 127's Doyoung and Taeil. Minimum requirements to meet the tier (for males) include solid support to at least G4/G#4 in the mixed register. If head voice and lows are quite good even if their mixed register is not in the same level, it could give them a boost.

**Average to Above Average** – Similar level to Aespa's NingNing. So far there is only one 4<sup>th</sup> Gen K-pop Male idol here, which is DKZ's Mingyu, who is an avid participant in musicals. Minimum requirements to meet the tier (for males) include a solid grasp of support to at least F#4/G4 in the mixed register. If head voice and lows are quite good even if their mixed register is not in the same level, it could give them a boost.

**Average** – Most 4<sup>th</sup> Gen Main Vocalists such as P1Harmony's Keeho, WayV's Xiaojun, Cravity's Woobin, and TO1's Jaeyun are here. Minimum requirements to meet the tier (for males) include decent support (not shallow) to at least F4/F#4 in the mixed register. If they can support to G4 and G#4 at times, but the support quality is not very good with excess tension and/or pushing, they may be stuck here. Consistency and support quality matters more here.

**Weak to Average** – Some 4<sup>th</sup> Gen Main Vocalists are here aka Treasure's Jeongwoo, SKZ's vocal line (Han, Seungmin and I.N), Enhypen's Heeseung and Sunoo. Minimum requirements to meet the tier (for males) include somewhat solid support to at least E4 (if support quality is surprisingly good) or E4/F4 (for more dodgy support quality and inconsistency) in the mixed register. Vocalists at this level are shallow or/and lack consistency in achieving fullness in their singing. You can tell that the sound does not feel totally engaged. There is a sense of unrefinement.

**Weak** - Few 4<sup>th</sup> Gen Main Vocalists are here like Lia from Itzy. Minimum requirements to meet the tier (for males) include shallow support to D#4/E4 with some form of consistency. Most vocalists here are very nasal, throaty, or both. They may carry support higher up like F4, but it is usually too shallow to be considered.

**Underdeveloped/Non-Vocalists** - Those mentioned in the document may show hints of support here and there, but no/little consistency. Very shallow most of the time. The rest of the boys planet contestants also belong to this tier, but they were not mentioned because they showed no sign of breath support and lack general singing foundation. *Most idols are here.*

**Note: This List will be constantly updated as I access and access new material and the show goes on. If I misevaluate someone in the process, I will make changes as soon as possible**

## **How to navigate/use this tier list:**

**Welcome to the Boys Planet Vocal Tier List! Now, you may be wondering, how in the world should I navigate this extremely lengthy document of a grand total of 40 pages and over 5000+ words? Obviously, I highly doubt most people viewing the list will bother reading every single word here, and I made sure to take account for it.**

**You can refer to the pop up to the left in which you can see how the document has been arranged through headings and sub-headings. If you are here merely to check out your favourite trainee/s evaluation in more detail, scroll down through the pop up until you find their name/s. Click on it, and google docs will automatically take you to that section of the document.**

**If you do not find your favorite trainee on the list, that means that from the material I have seen of that particular trainee, I did not see enough development in their singing to be included. If you want me to reconsider their placement, you can always send me a dm/comment with link/s you want me to check out, and I will take a look at it as soon as I can. I may be able to re-evaluate them if the materials I had seen previously were not a good gauge of their skills, but if not, that's life. We can't always get what we want, just like how we realistically cannot get a K-pop group full of power house singers.**

**If you want to look at all the vocalists within a specific tier, click on the tier heading instead, rather than the name of a contestant.**

**The summarized version of the tier list is placed in the beginning of the document (after this page) to accommodate those people who want to mainly get the big picture and don't want to bother reading the detailed explanations.**

**Reminder: DO NOT USE THIS TIER LIST AS A WEAPON OF FANWARS. IF I HAPPEN TO FIND THAT THIS RESOURCE WAS ABUSED, I WILL NOT HESITATE TO RESTRICT ACCESS AND DELETE ALL OF MY PREVIOUS POSTS ABOUT VOCAL ANALYSIS IN BOYS PLANET.**

**This is instead an opportunity to learn more about vocal technique and a resource to help decide your picks if you consider vocal ability as an important determiner of who you vote for! If you have any questions or clarifications about the placement and analysis of anyone in the list, send me a dm or leave a comment on the reddit post, and I will respond to you to the best of my ability.**

**The links of the singing clips I viewed to make the analysis are all found below the analysis of the trainee so you can see for yourself how good they are at singing. You can also think of this tier list as a form of promotion.**

# Summarized Version

## Average to Above Average Vocalists

Hui - Pentagon - Low Average to Above Average - D3/Eb3->F#4/G4

## Average Vocalists

Hwanhee - UP10TION - high average - Eb3 -> F#4/G4

Kim Tae Rae - mid average - E3 -> F#4/G4

Zhang Hao - mid average - C#3/D3 -> F#4/G4

Cong - mid average - D3 -> F#4

Yoo Seungeon\* - mid average - E3 ->F4/F#4

Park Min Seok - low average- Eb3/E3 -> F4/F#4

Park Hanbin\* - low average- Eb3 -> F#4

## Weak to Average Vocalists

(Jay Chang - High weak average - D#3/E3 -> F4/F#4)

Lee Yedam - high weak-average - E3 -> F4/F#4

(Ricky\* - mid-high weak-average - E3 -> F4/F#4)\*

Sung Han Bin - mid weak average- E3 -> F4/F#4

Park Gunwook - mid-high weak average - E3/F3 -> F4/F#4

Jeong E-Chan - mid weak-average - F3 -> F4

Wumuti - mid weak-average - E3 -> F4

**Yang Jun - mid weak-average - C#3/D3 -> E4/F4**

**Jung Hwanrok - mid weak-average- Eb3/E3 -> F4**

**Winnie - mid weak average - D3\* -> F4**

Krystian - low-mid weak-average - C3 -> E4

**Wen Ye Chen - low weak-average - D3 -> F4**

**(Keita)\* - ? -> F4/F#4**

**Ji Yun Seo - low weak-average - ? -> F4**

**Chen Jianyu\* - call me baby**

**Seok Matthew - Fringe weak-average E3 -> E4/F4**

### **Weak Vocalists**

**Linuma Anthonny - E3 -> E4**

**Kum Jun Hyeon - E3 -> E4/F4**

**Lee Seunghwan - E3 -> E4/F4**

**Kim Ji Woong - E3/F3 -> D#3/E4**

**Wang Zi Hao - E3 -> D#3/E4**

### **Underdeveloped/Non Vocalist**

**Bak Do Ha**

**Lee Daeul**

**() = under re-evaluation**

**\* - Lacks Materials**

## In-depth version with explanations

### Average to Above Average Vocalists

#### Hui - Pentagon



Supported range – D3 -> F#4/G4

- **Best Vocalist** in Boys Planet
- Solid mid range
- Can bring support to G4 quite consistently, support is good quality
- Able to produce open, well-rounded belts from time to time
  - Still slightly nasal from time to time, may interfere with projection and support quality
- Can connect head voice to Bb5
  - Pitch inconsistencies in general
  - Poor agility

- Already analyzed by the vocal community in the link below! He was misevaluated slightly and is now widely accepted as Average to Above Average

<https://www.youtube.com/watch?v=tLE7UgsatVA&t>

# Average Vocalists

## Hwanhee - UP10TION



Supported range – Eb3 -> F#4/G4

### Pros

- The **2nd best vocalist** on the show
- Belting technique is great within the context of the show
- Can bring support to F#4 consistently, G4s and G#4s may carry support but have noticeable tension
- **Musicality and musicianship is developed** as an experienced vocalist who knows his voice inside and out

### Cons

- Can carry too much tension around the F#4 area, needs to find a way to reduce the constriction
- Low register could be more developed
- Still has some **minor pitch issues**
- **Recent nodules may have affected his singing a bit, but his G4s still carry some support in the Kill This Love K Group performance.**

### Sources for promotion purposes

<https://twitter.com/yonminintl/status/1606549313995563009?s=20&t=AebX9wbYHNOTzY5tYXsaNA>

<https://twitter.com/godgyujin/status/1608424947495612416?s=20&t=AebX9wbYHNOTzY5tYXsaNA>

<https://www.youtube.com/watch?v=tLE7UgsatVA&t>  
<https://www.youtube.com/watch?v=A5Fp8MvEVF0>

## Kim Taerae



Mid Average

Supported range – E3\* -> F#4/G4

### Pros

- Support quality up to F#4, sometimes G4 is relatively good, the engagement is quite noticeable
- Singing has nice warmth and tonal depth
- Has good singing foundations in legato, pitch, and general navigation of his voice
- Can handle both closed and open vowels- does not compromise support.

### Cons

- Suffers from pitch inconsistencies
- Struggles in approach- Mix can be too chesty, forces him to push to achieve support, more noticeable in pre-debut content, but still noticeable in some Boys Planet Performances.
- Sometimes suffers from inconsistencies of support quality in general due to excess tension from pushing.

### Sources for promotion purposes

[EP 0](#) - Shows solid grasp of F#4s in good quality

[Top 10 Student](#) - Shows potential to achieve mask resonance in the future, his voice is full of tonal depth and is clearly developed.

[When We Were Young](#) - Admittedly, not his best performance. He shows hints of unrefinement. This may have been a few years ago, however, and the support is still present, although in the higher notes, achieved through pushing and excess pressure aka not best quality.

[Top 10 Student Extended](#) - His best clip, his handle of the F#4 is very solid, and his attempted G#4 is also not too bad, but it did not carry enough support. His G4 here is also passable.

[Solo Performance](#) - His 2nd Attempted G4 here was good and supported, although he fumbled halfway, he recovered. This suggests that he is not fully comfortable with G4 yet.

[PR Video](#) - Confirms his ease with F#4.

[Signal Song Re-valuation](#) - This clip convinced me he is in the higher portion of average. Practically all of his phrased G4s here are supported with good quality too, not particularly excellent, but it is in the realm of 'safely supported' rather than 'passable'.

## Zhang Hao



Mid Average

Supported range – C#3/D3-> F#4/G4

### Pros

- Incredible ease in his lower register, able to maintain support like the likes of Jaeyun and Keeho. Maintains projection, tonality and depth down to C#3/D3, has obvious ease and practice in this part of his voice. Practically every pre-debut material I found of him has him singing these low notes and it has paid off in his vocal development.



Note: For context, Jaeyun (TO1) and Keeho (P1Harmony) have some of the best lower registers among 4th gen male idols. Even compared to most 3rd gen K-pop idols in tiers higher than Average, Zhang Hao's low notes trump them. This is probably due to the different styles between Korean songs and Chinese songs, with the latter usually containing way more low notes, hence his proficiency in this part of his voice.

- Solid support throughout his midrange up to F#4 consistently even with lighter coordination
- Sources suggest minor **improvement over time**, his F#4s were sometimes messy placement-wise (stuck in his throat, causing excessive tension), but he can now support G4s and deliver clean F#4s
- His sense of **mixing has also improved**, now able to carry some support in G#4s (inconsistently)
- Shows a **good understanding of his voice**- can apply a wide variety of dynamics to his voice to enhance the mood the of song
- **Smart Vocalist**, avoids singing/belting above his supported range.
- **Pitch is clean up to F#4/G4** usually, can go pitchy in belts when placement is not ideal in his earlier clips, or in more tricky phrases, but he usually can handle them well.
- Shows promise for **agility** – has shown to be able to handle simple runs at a moderate speed with good pitch accuracy and precision without sliding through notes
- **Good open vowels**- Clearly trained

### Cons

- **Upper register is quite underdeveloped and underutilized.** He is unable to connect his head voice. His falsetto is inconsistent, can be relaxed or tense (most of the time)
- Struggles with **closed vowels**. He usually drops/compromises support in close vowels due to constriction, although he is able to handle them with less tension in more recent clips
- Support quality can still be improved and refined overall to move to the next tier. In particular, I hope to see his G4s and G#4s achieve the same quality as his F4s and F#4s (usually).
- Recently seems to be showing some tendencies to be overly nasal around the consonants 'n' and 'm', also F#4s are not always as consistent as I thought.

### Sources for promotion purposes

<https://twitter.com/jeromeplanet/status/1608964751400529922?s=20&t=cpClvljVQIk gPfthzAwVfA> – From the first clip I saw of his singing, his development in his low register is evident. Here, he showcases several projected C#3s and C3s with good

support quality, also with some nice depth to his tone. His B2 sounded a bit muffled, however. He also shows clean support up to F#4, but lost quality of support at the phrased G4 due to excess tension from pushing.

<https://twitter.com/zhanghaotwt/status/1609095376304508931?s=20&t=hafFjL9pnjyJn4NxlVo9Kg> - This clip shows his inconsistency with handling F#4s in the past. The support was present, but the placement wasn't ideal, which made it rough and unrefined sounding. Additionally, he showed hints of decent agility, able to handle simple runs with good pitch accuracy and moderate speed.

[EP 0 - GOT7 Lullaby](#) - Handled the G#4 nicely, consistent F#4s, again, solid mid range and development is clear. One of his best clips, and the quality between his singing here and predebut is quite noticeable- he has improved steadily.

[https://twitter.com/icecream0404\\_/status/1609580486023843841?s=20&t=hafFjL9pnjyJn4NxlVo9Kg](https://twitter.com/icecream0404_/status/1609580486023843841?s=20&t=hafFjL9pnjyJn4NxlVo9Kg) - Proof of his improvement, while his approach was not bad, his placement was not ideal, and he pushed excessively to achieve support on the F#4 notes and higher. He is able to handle the same notes in a better placement and support quality today.

<https://twitter.com/zhanghaotwt/status/1609844415962697735?s=20&t=STRuUzljibb08ltgtepPBA> - Showed light inconsistency with F#4, but his solid development throughout his supported range is clear, his mixed range is projected, carrying great tonal quality. Showed evidence of good control of his voice, applying dynamics to good effect. Again, showed inconsistency in his falsetto (tense).

[PR Video](#) - He slipped to falsetto here, but his mid-range support quality is good and evident.

[Mixing + Belted A4 \(phrased\)](#) - he is not afraid to attempt belted A4s, and I am pleasantly surprised by it. Despite not carrying support, the placement was not bad, and it hints at his potential for the future. He truly aims to improve his technique and this will guide him on the right path as a vocalist for the rest of his life.

[Best Performance](#) - This clip in my opinion is one of his best, because it shows the extent of his breath control and support. You can quite literally hear him supporting his voice, his airflow is steady, the sound is clean and projected, his placement is mostly ideal. I have heard the original version of this song somewhere, and I remember the original singer singing it pretty much in the same way. His handling of the repeated F4s with very solid support quality without faltering as well as his good attempt at the G#4 at the o vowel, despite losing some openness and projection, is his best attempt prior to lullaby in EP 0. His sustained G4 is also great, although it does not carry the same support quality as his F#4s. It is still quite good though, mind you.

[Live version of clip above, above is practice](#) - He did a bit better in practice, but the support in his F4 is solidly maintained. D3 is supported here.

[Singing in Wedding](#) - Solid mid range, sounds developed and clean, supported the whole way through.

<https://twitter.com/nikinyourarea/status/1620663912386658306?s=20&t=seGXyB-kS4oS TOMnHjRn0g> - Support maintained to F#4, G#4 sustained is not his best attempt

# Cong



Mid Average

Supported range - D3 -> F#4

## Pros

- Balanced mix, there is good chest presence, yet it is not overly heady that it loses quality.
- Belts from E4 to F#4 have a strong sense of engagement aka quality of support is good.
- Low Register is more developed than I anticipated, relatively consistent down to D3/Eb3
- Singing fundamentals are honed, legato is excellent, pitch has not gone off in almost all his most recent clips.
- Excellent vowel shaping, even able to handle closed vowel belts to a good degree of success. Musical background is clear.
- Nice tonal quality

## Cons

- A little too nasal sometimes, blocks openness and projection as he ascends
- However, his day to day singing, his support is not as solid as it could be, and his slight inconsistency puts him lower. Could be a stylistic choice though, however.
- Thins out and loses support above F#4, but placement does not go wack above

## Sources for promotion purposes

[PR Video](#) - Looking back at it, the quality of support he showcased in his PR video is passable as an average. The thing that held me back from placing him higher initially

was that he sung only in his mid range, with little showcase on how he does above. However, the F#4 was supported.

[Older Clip](#) - This clip was taken on 3/2020. Here, he showcased that he was willing to take a bolder approach. His E4s were all of good support quality. There is some inconsistency shown in his approach within his mid range, but it seems more like a choice rather than incapability.

[Solo cover/song from youtube](#) - Here, his development in his lower register is evident. However, the vibrato he showcased is unnatural and forced. His support quality particularly in his mid range was quite decent. His belted notes lack roundedness, openness, and projection. It may also be due to the vowels of the Vietnamese language. At the end of the day though, his F4s and F#4s are mostly passable, but the quality in support between the F4 and F#4 is quite apparent.

[Vietnamese song](#) - This was him as a teenager. At this point, his breath support is relatively shallow, but the singing foundations of legato, pitch and placement are there. Preferred to flip to falsetto rather than mix notes.

[Piano + singing](#) - Here despite singing with a very light coordination, he did not lose connection. The quality of support here was not the best, but it was present.

[Piano + singing 2](#) - Similar the one above, but he was a bit bolder. Here, he showcases signs of personal artistry. Unfortunately, not the best clip to show the extent of his support.

[2 Older Clips, see 2018 clip, particularly good material](#) - Showcased several E4s with full support, both phrased and sustained. I'm very impressed he was able to maintain support in the closed vowel (Eeeee) because it is much harder to do so as it can easily interfere with placement without the right technique. Some phrased F4s that were also supported fully. His engagement is so much stronger than I expected, even though Cong may not have sung the musical clip, this clip in particular practically makes up for it. If he was this good nearly 5 years ago, I can only imagine him moving up from here. 5 years, and he was showing average-worthy belts. I wish that I heard him in the chorus alone because I suspect he supported the F#4s, but he was singing with other vocalists here so I can't tell.

[Best Performance, but studio version](#) - He has his solo part at 1:13, where he demonstrates solid support in his E4 as well as a very nice F#4 here. This is a fairly recent clip too! His attempted G#4 loses openness and support, but the placement was not too bad. What is particularly impressive is the sustained F#4, which was well supported, even carrying natural vibrato. He has clearly improved his technique over the years. At 3:23, he attempted a mixed B4, which was a great attempt despite being slightly constricted and lacking support (better than most vocalists below Above Average tier). Again, his F#4 here as he descended was well supported. The most shocking thing about is at 3:29, where in an adlib, he belts a A4, and it was a good attempt for a vocalist at his level of technique.

[High School Musical Audition](#) - The support quality here at the D#4/E4s as clearly solid, worthy of being an Average Vocalist. Obviously trained, vowels are excellent

## Park Han Bin



Tentatively Mid Average

Tentative supported range - D3/D#3 -> F#4/G4

Pros

- Agility has potential
- Support quality throughout mid range is strong in F4s and F#4s and down to at least D#3
- Maintains tone, projection in his low register cleanly around D#3
- Foundations are developed. Navigation is not messy at all, little to no problems in difficult transitions and octave jumps.
- **Basically Jaehyun**

Cons

- **Nasality can become prominent**
- **Lacks material - may be better or worse than he is in this tier list currently**
- Side note, but he has one of my fav PR videos!

Sources

[https://www.youtube.com/watch?v=qaCCMuM\\_Jcl](https://www.youtube.com/watch?v=qaCCMuM_Jcl)

[https://twitter.com/hanbindivo/status/1618443268047638532?s=20&t=XPpCZcZzeP\\_I1Ny4QJAdDw](https://twitter.com/hanbindivo/status/1618443268047638532?s=20&t=XPpCZcZzeP_I1Ny4QJAdDw)

[https://twitter.com/hanbindivo/status/1618443745523040259?s=20&t=XPpCZcZzeP\\_I1Ny4QJAdDw](https://twitter.com/hanbindivo/status/1618443745523040259?s=20&t=XPpCZcZzeP_I1Ny4QJAdDw)

# Yoo Seungeon



Mid average

Tentative supported range - E3 -> F4/F#4

## Pros

- Heady mix to reduces strain, makes him sound impressive, but support is lost above F4/F#4
- Again reminds me of NCT Doyoung regarding approach, except lacking the support quality
- Good Vowel shaping
- He has high potential, if he is able to develop his support more to take advantage of his sense of mixing, he could go way up.
- He manages to avoid being throaty or overly nasal (sounds clean, almost SM style, he was a former SM trainee which makes sense now hahah)
- Able to carry support in phrased G4s, but support quality compared to F4s and F#4s is noticeably a bit weaker.
- Tension overcomes support in G#4

## Cons

- Lack of chest engagement at times and general development, prevents his support quality from being more solid This results in very shallow engagement as he ascends higher, but kudos for sounding clean and 'not strained'.
- Vocal chords seemingly unable to handle a bolder, chestier, more belt-like approach
- Lower register seems underdeveloped

I see parallels with Bora from Girl's Planet, has ease with high notes but loses support early on, but he is much much better than Bora at this point. His ease with high notes will likely make him popular in the show and a popular choice for main vocalist.

### **Sources for promotion purposes**

[https://www.youtube.com/watch?v=vZwwY\\_dQa\\_g](https://www.youtube.com/watch?v=vZwwY_dQa_g)

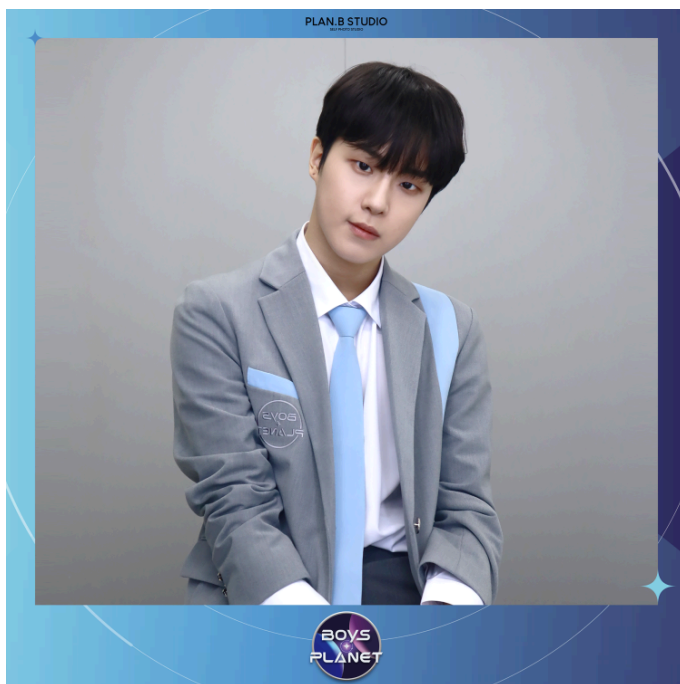
<https://www.youtube.com/watch?v=tjO6v6XOYag>

<https://www.youtube.com/watch?v=iFVxRna3LKs>

[https://twitter.com/pick1\\_2/status/1617336420351488005?s=20&t=OdEZTeoh3WEsnvxcLAtcow](https://twitter.com/pick1_2/status/1617336420351488005?s=20&t=OdEZTeoh3WEsnvxcLAtcow)

<https://twitter.com/myfeboys/status/1621121160997126145?s=20&t=seGXyB-kS4oSTOMnHjRn0g>

## **Park Min Seok**



Low Average tier

Supported range - ? -> F4/F#4\*

- Beautiful voice

- Support is of good quality at times, but inconsistencies hold me back from putting him higher
- Up to F4/F#4, support quality is actually decent
- excessive nasality
- Strong sense of musicianship - can deliver emotions really well, manipulates his voice accordingly to achieve the appropriate dynamics.
- Can struggle with approach at times.

<https://www.youtube.com/watch?v=YBabjIH3iIE>

<https://twitter.com/fxv178/status/1612694194132504576?s=20&t=buCZtncSWV6n6GIDbJGqwa>

<https://twitter.com/fxv178/status/1612694090520625152?s=20&t=buCZtncSWV6n6GIDbJGqwa>

## Weak to Average Vocalists

### Lee Yedam

(TBA)

### Park Gun Wook





Mid Weak to average

Tentative supported range - E3/F4\* -> F4/F#4

- Able to maintain relatively consistent support up to F#4, even in closed vowels
- Noticeably, his mid range can be underwhelming, but his support quality greatly improves around E4, likely due to the nature of the songs he was singing (that cause these fluctuations). I was not fully convinced of his ability until the second half of his performance in Wild Idol as his mid range was a bit airy.
- Able to use a relaxed falsetto up to around A4
- Foundations with Pitch, Legato, and general navigation of his voice are there.
- Lower register seems noticeably less developed than mixed register, has a tendency to go airy and his support may become more shallow.
- Carries excessive throat tension starting around F4.
- Breathing technique could be improved, takes breaths too often.
- Still sounds unrefined and thin, needs to create more space in his throat so he can produce a more open sound and improve his support quality.

### **Sources for promotional purposes**

[PR Video](#)

[Wild Idol Duet clip](#) - Single handedly changed my evaluation of him.

[Wild Idol group clip](#) - Proves consistencies in F#4s, even in closed vowels. Credits to u/Ndr26 for the two very helpful clips!

[Wild Idol - Solo Clip](#) - Continues to show consistency on the F#4s even though they are a bit tight. G4 carried support. Credit to u/xiumineral for this clip!

Singing clips in Boys Planet - Shows inconsistency. Kill This Love wasn't the best showcase.

## Sung Hanbin



Mid-High Weak-Average

Tentative supported range – E3\* -> F4/F#4

\*Lower range is unclear at this point of time. Seems to be weaker than his mixed register, however.

### Pros

- At his best, he sounds like an average vocalist
- Support quality in his mid-range up to F#4 is very solid when in his serious mode, aka when he sung Love Me Right.
- Has supported one G#4, which makes me inclined to believe that he is average at minimum. Support quality is better than I expected from the so called 'supported' G#4s from fellow average vocalists, there is tension present yet it is relatively open. It was slightly stuck, but still better than most attempts from average vocalists.
- Approach similar to NCT's Doyoung, employs a more heady mix and takes a bolder more rounded approach infrequently

## Cons

- Seems to prefer not using a bold approach, opts for a lighter co-ordination with less chord closure as seen in the show so far. This can compromise his support quality, and hence he is placed in weak average for lack of consistency.
- Can get messy around the G4 area
- Struggles with closed vowels above F#4/G4, can make support in F#4s inconsistent

## Sources for promotion purposes

[EP 0](#) - Showed ease and grasp with F#4.

[Supported G#4](#) – supported G#4, although he got slightly stuck, I don't think it is a fluke, but I need to wait and see.

[PR Video](#) – He sung in a cute style to appease fans aka not a good material to gauge his capabilities.

[Love Me Right Live Performance](#) - Clip from 2 years ago, credits to reddit user A\_winged\_girrafe for sharing this with me. He already showed a solid grasp of F#4 at this point, but his attempted G#4 sort of flopped here. This clip practically confirms that he is average.

[Love Me Right Practice](#) - This is the preparation for the performance above. I think that his G#4 flopped because of the heavy dancing. This was the origin of the supported G#4

[Beautiful Beautiful](#) - It seems like his singing style has changed ever since joining the show. His voice is more airy, his tone is also different. His general grasp of support seems to be weaker than I initially thought.

[Signal song re-evaluation](#) - This confirms my thoughts. His support is not solid enough in general to qualify for average, hence he was lowered on the tier list.

## Jay Chang



Mid-High Weak to Average

Tentative support range - F3\* -> F4/F#4

Note: he is confusing to analyze because of how stylistic he is, but his best moments show him being able to handle F#4s fairly well.

### Pros

- When he sings without/little stylistic choices, his support quality throughout his mid range up to F#4 is decent
  - Belting is good for a vocalist of his level, able to add headiness to prevent excessive strain.
  - Able to employ many stylistic choices to good effect, growls, distortion, pronunciation, etc. to match the style of the song or add his own twist into it
  - Stylistic choices can interfere with technical execution, but the fact he can switch back and forth is impressive. It shows his good control and understanding of his voice.
  - Can connect head voice at times, falsetto is usually relaxed up to A4ish
  - While this is a technical analysis, I have to give props to his musicianship and his ability to convey emotion, he is really a great singer
  - Agile, his runs can slide through notes at times, but they have good speed and decent pitch accuracy. He is within the top 5 most agile vocalists of the show
- Has a natural vibrato

### Cons

- Low Register seems underutilized and underdeveloped\* projection is noticeably weaker down there than his mixed register.
- Support becomes shallow in slower songs, may be a stylistic choice
- Lacks technical consistency due to the constant stylistic choices he applies to his singing which makes it tricky to place him on the list.
  - Singing lacks some general refinement. Transitions could be smoother, pitch can be somewhat inconsistent.
  - His voice sounds thin compared to other vocalists higher than him, can further work on foundations of support to achieve a rounder sound with more depth. Compare Hui's F#4s to Jay's F#4s, you can see how while Jay's is arguably nicer to listen to because that 'clear' quality of his voice as well as his tone, Hui's voice has more body and roundness because his foundations are more developed.

To elaborate, the first clip of him in Ep. 0 made me think that he was a weak to average vocalist at best. Then, I saw videos of him singing in Korean in slow songs, where he sounded very shallow and breathy, which made me think he was a mere weak vocalist. Yet, as I encountered more clips of him singing in English boldly and properly belting, by no means is he a mere weak-average! It made me realize how many choices he makes in his singing, making it tricky to gauge his technical limits

- Has some pitch problems at times

### **Sources for promotion purposes**

[https://www.youtube.com/watch?v=vZwwY\\_dQa\\_g](https://www.youtube.com/watch?v=vZwwY_dQa_g)

<https://twitter.com/inYOONGIwepray/status/1608460041878896641?s=20&t=STRuUzljibb08ltgtepPBA>

<https://twitter.com/DRMINGSHOSEI/status/1609802087717543937?s=20&t=STRuUzljibb08ltgtepPBA>

<https://twitter.com/jaycpics/status/1608549672033095681?s=20&t=STRuUzljibb08ltgtepPBA>

[https://twitter.com/loml\\_choi\\_san/status/1608513172457259009?s=20&t=STRuUzljibb08ltgtepPBA](https://twitter.com/loml_choi_san/status/1608513172457259009?s=20&t=STRuUzljibb08ltgtepPBA)

[https://twitter.com/loml\\_choi\\_san/status/1608646570005901312?s=20&t=STRuUzljibb08ltgtepPBA](https://twitter.com/loml_choi_san/status/1608646570005901312?s=20&t=STRuUzljibb08ltgtepPBA)

<https://www.youtube.com/watch?v=iLibl6cbHbg> - The latest PR videos is an example where he sung with stylistic choices throughout, that throatiness was present throughout, leading even his F#4s to be very squeezed and throaty and lack support. This makes placing him very difficult as technically from that performance alone he would be in weak tier, yet watching his other singing clips, I know he is average at best. It is so frustrating HAHAAHA.

<https://www.youtube.com/watch?v=GsgFmDnUARo>

[National Anthem](#)

[Love Me Right Fancam- F4s supported](#)

## Jeong I-Chan



mid weak Average

Tentative supported range - F3 ->F4/F#4

- Usually, too breathy and airy, weak cord closure
- When attempting to support properly, can maintain it up to F4/F#4 as shown in his love poem cover, but it was achieved with excess pushing and pressure.
- In his love poem cover, he makes the cutoff to weak to average. Yet most of the time, he is more like a high weak. I am looking forward to seeing more consistency from him.
- In the show however, he sounds much more solid that I would give him a pass to average.
- Pitch is clean, legato is nice
- Engagement is still shallow most of the time, his chords need more development still.
- To further move up, he needs to strengthen his foundations, increase chest engagement particularly. - Showed this in Mirotic already, he is on his way!

### Sources for promotion purposes

### Credits to u/Ooeeeek for materials

debut song - [https://youtu.be/\\_lwCQ4rhBfQ](https://youtu.be/_lwCQ4rhBfQ)

His song midsummer - <https://youtu.be/hlqdVlPhjg8>

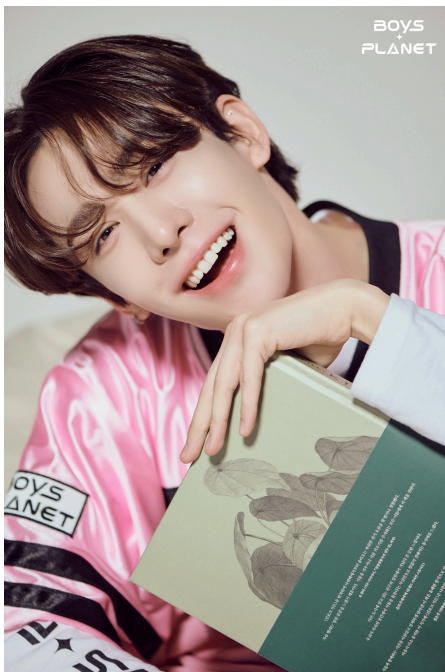
love poem by iu - <https://youtu.be/D1vnfhYrJHQ>

christmas tree by v - <https://youtu.be/jgWd4zfQw-4>

Butterfly by bts - <https://www.tiktok.com/t/ZTRbWmQGv/>

[Mirotic](#) - Seems to have considerably improved. Support quality and cord closure is solid here. Seems to have been employing initial stylistic choices or just improved in time for the show. F#4 are supported, his placement and handling of notes higher are not bad either.

## Wumuti



Tentatively Mid Weak-Average

Tentative supported range - E3\* -> F4/F#4

- Support can be shallow, prefers not to use bold approach, compromises support quality at times
- Has improved, recent covers show consistency up to F4.
- Falsetto is very relaxed. One of the most controlled in the whole show
- Can Connect Head voice, though not supported
- Stylistically, one of the best sounding voices. Unfortunately, because he is so stylistic, it is hard to gauge his belting ability at this point. He either goes into a very heady mix or directly flips to falsetto.
- Consistently nasal, compromises support quality at F4s and F#4s even if they carry support usually
- 2nd most agile vocalist in the show,

<https://twitter.com/itsukiplanet/status/1608650070496514049?s=20&t=rJm-5Dq87988YCN-WhvSsw>

[PR Video](#)

<https://www.youtube.com/shorts/4jMbW2OqQ8g>

[Bambi - Baekhyun Cover](#) - F4s are nice, singing foundations are there at this point, heady mix

<https://www.youtube.com/watch?v=K-RkoBFrs30> - proves consistency with F4s. Support is carried down to E3.

[Dive With You - Seori](#) - Proficiency with falsetto and going into that airy/heady mix is obvious here. Connects head voice.

[Light Switch](#) - One of the F#4s carried support, but thats it. The F4s here are a bit dodgy likely because of the stylistic choices here. Falsetto and agility is well displayed here.

<https://www.youtube.com/watch?v=nK4yl7woifl> - Showcased some somewhat passable F#4s here.

[Best Performance - Left and Right Cover](#) - Most F#4s carried enough support here, hints at his full extent of his ability. His limit is F#4s and G4s for now, but the G4s had too much tension mostly to be counted. This along with the clips above propel him to Weak to Average. He may be low average with enough materials actually.

## Yang Jun



Tentatively Mid Weak to Average

Tentative supported range - C#3/D3 -> E4/F4

- He chooses to sing chinese ballad songs most of the time, which is set at a reasonably lower key than K-pop songs. He is in a similar situation to Zhang Hao actually where his low register is more developed than an average K-pop idol because the songs they sing contain much lower notes than most K-songs. I think from the clips I've seen, he maintains consistent support to



D3 or slightly lower at times, heard some not-bad C3s from him, he can maintain tonality even at Bb2, you can think of his lower register and Zhang Hao's to be around the same level, if not a bit worse/better.

- Meanwhile, his mixed register's development, like Zhang Hao, has not caught up with his development of his low register. I was not too sure what his limit was until I heard the very last clip (thank god that last clip was there HAHAHA), where I came to the conclusion he can maintain a decent quality of support with consistency up to D#4/E4, and he has supported an F4 somewhat okayish (in an open vowel, flops the rest in close vowels). His belting technique is completely underdeveloped, but his mixing is not bad.
- His falsetto is quite relaxed at times, but it is still inconsistent at this stage. He shows potential to develop his head voice though. If he develops support there, he might even make it to average on the merit of being a well rounded vocalist.
- Overall, he is like a less-developed version of Zhang Hao. While both of their lows are in a similar level, Zhang Hao's mix triumphs Yang Jun's by quite a bit. I would love to see Yang Jun challenge himself in the show and potentially showcase that he can belt better than he did in his pre-debut clips.
- His artistry has also developed far beyond his technique. His stylistic choices in his singing are able to convey emotion with depth similar if not better to already debuted artists/singers. Have a good listen to how he sings. The feelings of absolute sorrow and loss are so well conveyed through the way he sings.

### Sources for promotion purposes

[Twitter vocal compilation](#) - Contains over 5 clips of Yang Jun Singing.

## Jung Hwan Rok



Tentatively mid weak to average Average

Eb3/E3 -> E4/F4\*

Best agility in the show. Notes are cleanly separated. All simple riffs and runs are done accurately to an impressive level.

- Best Upper register in the show, hands down. Falsetto is incredibly relaxed. His falsetto is much more controlled and relaxed compared to everyone else in the competition.
- Pitch is clean, very little inconsistency with pitch even when dancing.
- Despite nasal approach, avoids throat, tongue or jaw tension
- Transition between registers is very clean
- Heady mix allows ease in high belts.
- His singing as a whole is refined. I can say this about very few K-pop vocalists, even those in a higher tier than he is.
- Unfortunately, support quality is worse than all others above him.

[How Long by Charlie Puth - Best Performance](#) - Honestly, I have no idea how to evaluate him right now. His G#4s sound great, his agility is actually the best in the show, better than Wumuti. Yet he is really quite nasal throughout, his mid range and low register lack projection, and he is quite shallow in that area too. Yet at the same time, this isn't the case like Sieun of StayC because his mid belts are actually pretty good. I am conflicted, he sounds a bit like Haechan when he attempts the belts too. Sigh. However, I am sure his E4s, carried support. If I am not mistaken, his head voice sounds supported up to C#5!

[Blueming](#) - Supported Head voice up to B4. Supported F#4. Support in mid range down to E3 is more apparent here.

[V Live](#) - In Starlight, his support in mid range is stronger than both clips above. Proves clean pitch. F#4 is supported. Continues consistent support in F#4 in second song, shows he can maintain placement up to A4. His singing overall is very refined.

[Barricade - withus](#) - Not the best material considering that dancing interferes with their singing, but there were some good F#4s there from Hwanrok. However, his overall placement here is worse than what he showed in the clips above.

<https://www.youtube.com/watch?v=QObkEHGIfQk> - First line of Hwanrok, he displayed stronger engagement than usual in his mid range. Overall, showed good mid range, notes up to F4 were supported.

[Another V live, sang boy with love at about 37 minutes in](#) - Maintained consistency to F#4s, Continued to show his ease of transitioning to falsetto and his general control of his voice as a whole.

For all clips above, all credit goes to u/stardust\_bp for insane commitment in giving all these great material that singlehandedly changed his whole evaluation.

[PR Video](#)

## Wen Ye Chen

Tentatively Low Weak to Average (Was previously mis-evaluated from lack of material)



Tentative supported range - D3\* -> F4

- Surprisingly good tone brought down to C#3/D3
- When singing in a light co-ordination, he can maintain support
- In normal circumstances, he can achieve relatively full support at times, even if he can be shallow from time to time.
- Noticeably nasal placement, blocks some openness and projection.
- His musicianship is developed, adjust singing style to match song's atmosphere, and he does not sacrifice technique to achieve this. This is commendable
- Pitch is clean. No problems whatsoever within supported range.
- Cord closure is far more developed than I anticipated, when he sings normally, there is none of the excessive air or lightness he showed in the PR video.

**Sources for promotion purposes**

[PR Video](#) - here he sounds like a weak vocalist but the style of the song he was singing did not require so much engagement, and his concept was mainly singing to himself anyway. Hence, I underestimated him in this performance.

[Best Performance](#) - This source confirmed I had mis-evaluated him in the past based on a lack of material. Maintained clean support to F4 and at F#4 at times even while dancing. Cord closure is developed, no airiness. Side Note, I do recommend you to watch this performance in general, it is a good performance, not only vocal wise. His high placement on this list is mostly due to his clip here. (White tux guy is Ye Chen)

<https://www.youtube.com/watch?v=dvdzLkKEkOo> - Showed here that he can maintain support even with lighter co-ordination, developed enough to do so. Showcased nice F4s here.

<https://www.youtube.com/watch?v=jQaVuOF1q8E> - Source suggests improvement over time, his chord closure was not as developed back then. Additionally, his range is pretty expansive, can hit F#2. He got airy below D3, which supports my tentative claim that his limit in the lower register is D3/C#3.

<https://www.youtube.com/watch?v=39ak93fH5Ms> - Clip continues to prove his limit is around D3. But he is consistent there.

<https://twitter.com/tammmyeon/status/1610973761838415872?s=46> - Again, he can maintain support to D3 quite consistently, even in a light approach. He showcased a good ear for harmonisation, has some sense of musicianship. - credit for this clip goes to u/asterate.

[https://twitter.com/yechen\\_archive/status/1609069348341030913](https://twitter.com/yechen_archive/status/1609069348341030913) - credits to u/[Exzime69](#) for the clip, His engagement throughout his mid range up to the D#4/E4 was very solid. His foundations are stable. He can likely be Low Average with even

## Seok Matthew



Low Weak to Average

Tentative Supported Range - ? ->E4/F4

- Nice placement in the F4s
- Has showcased some form of consistency in his E4s and F4s, which are pretty clean, so it warrants him Weak to Average.
- Clean pitch
- unique voice, nasal in placement, blocks projection slightly
- Can maintain decent placement above F4, but achieved through instinct at this stage

### Sources for promotion purposes

[Hype Boy 2 Second cover](#)

[Kill This Love Fancam](#) - Showed support in the E4s and F4s in the song.

## Winnie



Tentatively Low Mid Weak-Average

Tentative Supported Range - ? -> E4/F4\*

\*Lacking in material severely, could be higher.

- Despite being still rough and unrefined, he can bring support to F4

### Sources for promotion purposes

[PR Video](#)

[Practice](#) - Sang same thing as Pr Video, but proves consistency. Support is strong enough for weak to average.

[Not really a good source tbh](#) - some support on E4, but he was singing stylistically throughout that interferes with support quality.

[My Universe Cover](#) - In the verse, he showed tone down to D3, not sure if it counts as support. In the chorus, he showed shallow support in the F#4 and G4. This confirms him capable enough to move up.

## Ji Yun Seo



(can't find a better pic of him T.T)

Tentatively Low Weak to Average

Tentative supported range - ? -> F4\*

\*Lacks material

### Pros

- Sense of support is surprisingly decent especially around his mid range
- Good Pitch Accuracy

### Cons

- sense of tightness throughout his singing, he could sound more relaxed
- Consistently nasal
- Singing is a bit choppy, needs to learn how to sing with more legato so he transitions from phrase to phrase more smoothly

### Sources for promotion purposes

<https://www.youtube.com/watch?v=iFVxRna3LKs>

# Krystian



Tentatively Low/Mid Weak-Average (at the merit of his best moments)

Tentative supported range - C3\* -> E4\*

\*lack material

- Not talking about the analysis in particular, but he is a good performer as I can see from his super boy clips. He incorporates his singing as part of the whole performance, meaning that you cannot expect technical consistency from him.
- Breathing is shallow, needs to correct his breathing technique. You can see him take a breath every few seconds, when it should not be that often.
- Takes singing as an art form (similar to Jay), which makes it difficult to gauge his true ability.
- Has a strong grasp of support from his low register throughout his mid range- when he wants to. Most of the time, he drops it in favor of style or becomes shallow (again because of the favor of style)
- Goes awry in belting. Needs to learn proper belting technique.
- One of the strongest low registers of the show, able to bring support down to B2 at times. Low notes have great tone, projection, and quality. Strong development is evident
- Great control over voice, can manipulate it to achieve several kinds of sounds; vocal fry, distortion, growls, etc. for the sake of 'storytelling' and conveying the song's message. He is already an artist, this is where his experience shows.

Sources for promotional purposes

[https://www.youtube.com/watch?v=03vCmVhf\\_E8](https://www.youtube.com/watch?v=03vCmVhf_E8)

<https://www.youtube.com/watch?v=Nt78lfL19S0> - Showed support to F4

[His whole run through Superboy 2017](#) - When he sung Telephone by Lady Gaga, there was enough engagement in his singing to qualify for the weak to average tier (support in D#4s were good). In his first duet song, never mixes higher than E4ish so I don't get anything new besides the fact that he can support his mid range well. In the intro of the first song, he displays the capability to support C3s quite consistently, which is a great surprise. In the second phase of the song, he displayed nicely supported B2. On the third performance, he showed consistent support in his E4s, which I had not seen before. On the Fourth performance, he showed a phrased supported F4. The phrased F#4 also carried support, but is a bit questionable.

Unfortunately, the rest of that performance was not the best. In the fifth performance, some of his F#4s carried support, although his vocal condition here was also not his best. The performances after start to show his technical limits. He is unable to support above E4 consistently.

[Whistle \(Black Pink Cover\)](#) - Continues to show how he favors style more than technique. He drops support throughout the whole clip, although even his rapping has more hints of support than not.

[Liability cover \(Lorde\)](#) - Same as above, except he did not drop support at the lower notes. His best asset is his low register.

Credits to u/Jolly-Cat4373 for providing the three clips above!

[Live](#) - Watched the whole 20+ minute video and he did not show any moments where his support would be strong enough for weak to average. I need to actually hear him sing more. His singing fundamentals are there, and so is his sense of mixing, but he holds himself back by not trying to belt more often and let his vocal chords develop in a more difficult environment. He currently sounds like a typical western pop singer, and he needs to break free from this. Most of the videos I've watched of him (did not include cause it was not notable support wise) shows him singing only in his midrange and rapping most of the time. Still lacks materials despite being in like 2 previous survival shows. He is staying here for the time being unfortunately. I really wanted to see evidence he is in weak to average, but it is not there in the clip.

## Ricky



Tentatively Low Weak-Average

Tentative Supported Range - ? -> F4/F#4



\*Needs more material

- Belting technique is decent, mixing is balanced
- Shallow support to F#4
  - Support in Mid range on a normal basis is more shallow than I expected unfortunately. Overestimated him.
  - Pitch is inconsistent
  - Very nasal - blocks projection

### Sources for promotion purposes

<https://www.youtube.com/watch?v=a9fMfGigkPE>

[https://twitter.com/planet98s/status/1612770934712332290?s=20&t=1sTYezj4eWymCg4\\_AVIKTQ](https://twitter.com/planet98s/status/1612770934712332290?s=20&t=1sTYezj4eWymCg4_AVIKTQ) - Unfortunately, this clip in his normal day to day singing proves that his cord closure and sense of support in general is still quite weak on a normal basis, suggests inconsistency. Hence, I have to move him down for now.

more materials!

## Keita



Tentatively somewhere in weak to average

Supported Range - ? -> F4/F#4

Pros

- When dropping stylistic choices, especially nasality, support quality becomes surprisingly good.

- Has ease in the F#4/G4 area that many vocalists of his level don't have.
- Does not have a problem with pushing and air management
- Pitch is good

#### Cons

- Stylistic choices greatly compromise quality of singing most of the time.
- Support is still shallow

<https://www.youtube.com/watch?v=kSHT009TsFc>

<https://www.youtube.com/watch?v=msBT8nIKvOE> - here, he shows that he is actually able to support cleanly up to C#4, but in any of his attempted note above E4, he just flips and relies on heavy nasality to reach the notes and becomes extremely shallow, there isn't really going on when he 'flips'. This inconsistency hinders him from becoming higher than low Weak. Honestly, his mid range sounds better than many people higher than him, but as a whole they are a bit more developed. He has a lot of potential though, I will watch out for him in the show.

<https://www.youtube.com/watch?v=i8OLyipSDFI> - His Attempted F#4s are honestly not bad. In general, I think he is held back by stylistic choices, but he has a decent grasp of singing fundamentals as a whole.

[Signal Song Practice](#) - His first line shows his full skill when he isn't lacing too many stylistic choices. His handle of F#4 and G4 easily deserves weak average.

# Weak Vocalists

## Iinuma Anthony



Tentatively High Weak

Tentative supported range - E3\* -> D#4/E4

- Not related to analysis, but his voice is something really special. It produces so much depth and tone in his mid range especially. He sounds like a Japanese Movie OST singer!!!

Pros

- Within his mid range, his support quality is quite decent. He starts tightening up at D#3, but most his E4s are passable enough. Sometimes can support F4
- He simply thins out and strains above E4/F4.
- Could be better by now, will move up with more materials.

Cons

- His voice lacks any sort of development outside his mid range. He just becomes thin and constricted above it.
  - Throaty placement interferes with notes above E4. Seems to have become his signature style to achieve the sound he creates. I personally love how it sounds, but it isn't the most sustainable in terms of technique.

Sources

[https://www.youtube.com/watch?v=8M4E220\\_Ngo](https://www.youtube.com/watch?v=8M4E220_Ngo)

<https://www.youtube.com/watch?v=kB-qZhldxKA> - credit to u/Hypersuper98 for providing the clip :3

<https://www.youtube.com/watch?v=qXynwqHeAUg> - Here he showed the same trends initially seen from his previous performances, maintained support to E4, lost it at the F#4. The new thing I got from here is he can use a relaxed falsetto to about A4. credit to u/suhmmer127 for the clip!

## Kum Junhyeon



Tentatively Mid-High Weak

Tentative supported range - ?-> E4

- Need more material

### Sources for promotion purposes

<https://twitter.com/romeohmin/status/1611186023865933824?s=20&t=VMorE0h1AcLLvJxUbtQhUg>

## Itsuki

Tentative Supported range - E3\* -> D4

- Support is quite shallow in mix, quality is solid in lower range, seems to be facing issues in throat tension or placement
- Ease in lower register, may be able to carry support below E3

[https://www.youtube.com/watch?v=kyEWK\\_t36No](https://www.youtube.com/watch?v=kyEWK_t36No)

## Kim Min Seung

Tentatively Mid Weak

Supported range - ? -> E4/F4

- Shallow support present in mid range to E4
- Excessive nasality
- Bad Vowel Shaping, prevents him from projecting an open rounded sound.

<https://www.youtube.com/watch?v=xBRWY7UJzo4>

## **Wang Zi Hao\***

- Something is going on here, but it is still unclear and lacks materials.
- Excessively nasal

## **Kim Min Hyuk**

Tentatively Weak Tier

- While Shallow, support in mid range seems to be achieved up to E4
- He has a very warm and soothing vocal tone!

<https://www.youtube.com/watch?v=FRMfQi3Qvaw>

## **Kim Ji Woong**

Tentative supported range - ?

- Lacks general development
- Cold closure is weak. Voice has tendency to lose connection leading to excess airiness and breathiness
- Pitchy
- Very shallow support, when present.

<https://twitter.com/sunghanbean/status/1608670853662924802?s=20&t=ewKuw7-aBxkb8KKyIr1qQ>

## **Chen Ren You**

Tentatively mid Weak

Tentative Supported Range - ? -> E4/F4

- While shallow in quality, support is maintained to F4 with some consistency
- Has the basics of legato down, makes his singing satisfying to listen to
- Good sense pitch
- Can be a bit breathy and lose some connection, unrefined as a vocalist still
- Not related to analysis but has one of favorite PR videos, he's literally singing throughout!

Sources

<https://www.youtube.com/watch?v=-PeKmKiZgFI>

## **Park Gwan Young**

Tentatively Low-mid Weak tier

Tentative supported range - ? ->E4/F4

- Inconsistencies hinder him, but his support sounds surprisingly decent at times
- Excessive nasality blocks openness and projection
- F4s in his last song convinced me he has potential, carried somewhat decent quality of support

<https://www.youtube.com/watch?v=2IjpvV28vzM>

## Dang Hong Hai



Tentatively Low Weak

Tentative Supported Range - ? -> E4\*

- Grasp of support in mid range is decent.
- Lower register shows potential, need more materials.
- Belting can be held back by developing proficiency of languages - see source below. Essentially, the support is present yet he is unable to make the ideal sound at times due to wrong vowel shaping. In Vietnamese, he has no such problem.
- Throat is closed around E4, previously mis-evaluated.
- Legato, at least in English, needs to be more developed. Phrases don't transition smoothly from each other as they could be. Look at any of Hwanrok's singing to see a stellar example of good legato. He does not seem to have the same problem in Vietnamese as seen in his clips as a Child
- Still sounds a very unrefined overall, but he has the potential.

Sources

<https://www.youtube.com/watch?v=qgblozwsp6s>

<https://drive.google.com/file/d/11Y0tLYDaPdxvLG5TO0SqEBZn4uWILIA/view>

[Best Performance So Far - Rolling in the Deep Cover](#) - Finally! A clip of him at his current age and showcasing his true abilities! Mid Range is stronger than some of

the other vocalists above him. Grasp of support to F4 is extremely solid. His slight unfamiliarity with the English Language hinders his vowel shaping from being as good as it possibly can. This is apparent in the way his first F4 Belt, in 'we could have had it ALLLLL' was decent, but his execution of the second F4 belt at the 'e' vowel in 'deep' led to some throatiness. However, his grasp of support is obvious even if there is a sense of refinement that can mostly be attributed to his currently developing proficiency in English. I can't wait to see more from him. I think his current limit is indeed F#4 because he has shown to go throaty then, but more materials will be needed to fully gauge his ability.

## Lee Seung Hwan

Tentatively Fringe Weak

- At his best, can support up to E4 cleanly and with decent quality.
- Pitch is actually good when singing seriously, but only when practiced. In general basis, pitch is unstable.
- Very shallow most of the time
- Belting technique is still underdeveloped,
- Severely Lacks singing foundations, when he sings softly, he becomes disconnected and airy. His chords still lack development to maintain connection, hence his support is inconsistent. A good trainee to compare him to actually will be Wen Ye Chen, he sings softly for the emotional songs, but his lower notes in particular don't lose connection. His chords are more developed.

[https://www.youtube.com/watch?v=vJN3yTC\\_6qY](https://www.youtube.com/watch?v=vJN3yTC_6qY) - His best performance in 1the9. Here he showed his true ability when he sung properly and not as a joke. He showed good engagement up to E4.

<https://www.youtube.com/watch?v=wVUpTtdcqCk> - Reveals his inconsistency in general in this clip.

<https://www.youtube.com/watch?v=ptsz-M1v1S>

## Underdeveloped Vocalists/Non Vocalists

- vocalists included here either are fringing weak tier or have potential to go higher, the rest of the contestants also belong in this tier but were omitted due to lack of development. If you want me to reconsider a contestant, please dm me.



## Lee Daeul



(credit to EclipseDays)

Lacking A LOT of material

Tentative Supported range – C#3\* -> ?

\*C#3 does not appear to be his limit, potentially more developed lower register than everyone else in the show bar Zhang Hao, Yang Jun, and Hui!. Oof, he not a dozen!

- Really shocked me with how developed his lower register is, I am not even kidding.
- You can tell his voice is naturally deep, larynx lowered naturally, not early
- Incredible ease, even at the G#2 (last note)
- His unusually developed lower register leads me believe he is at least weak even with a more subpar mixed register

### Sources for promotion purposes

<https://www.youtube.com/watch?v=ua2OeaQ14CE>

## Bak Do Ha

Tentatively Underdeveloped

- He is unusual in the sense he may actually be a natural baritone. His speaking voice is set a much lower pitch than most male idols. Also, it very nice to listen to, like an actors voice.

- He has a lot of potential, his lows show promise, but you can tell he sings mostly from instinct right now.
- I included him mainly for his potential, I can't wait to see him improve in the show.

<https://www.youtube.com/watch?v=Bdm8bVWnYQg>