



Extension

UNIVERSITY OF WISCONSIN-MADISON
OZAUKEE COUNTY



OZAUKEE COUNTY 4-H PROGRAM GUIDE 2025-2026

In Wisconsin 4-H we Value:

BELONGING

MASTERY

INDEPENDENCE

GENEROSITY

Being Yourself: Find and share your authentic sparks and interests.

Belonging Together: Recognize, understand, respect, and appreciate each other.

Building Connections: Grow positive relationships with peers and adults.

Discovering Skills: Develop skills through hands-on learning to help you succeed and thrive.

Exploring New Opportunities: Open the door to new experiences, projects, and places; and

Giving Back to Your Community: Make meaningful contributions through community service and leadership.



Index

Welcome Letter.....	3
What is 4-H.....	4
4-H Emblems and Symbols.....	5
4-H	
Terms.....	6-7
Who's Who in 4-H.....	8-9
Enrolling in 4-H -General Information.....	10
Ozaukee County 4-H Clubs.....	11
4-H Projects.....	12
4-H Countywide Activities and Events.....	13
Volunteering: How Can You Help?.....	14
4-H State, National, International Opportunities.....	15
Organizational Chart.....	16
What are Sparks?.....	17

4-H Positive Youth Development Educator
Abi Quinlan

Program Support Staff
Claudia Breitengross
Kaitlin Felton

Extension Ozaukee County
121 W Main St / PO Box 994
Port Washington, WI 53074
Phone: 262-284-8288
Fax: 262-284-8100

<https://ozaukee.extension.wisc.edu/4-h-youth-development/>



Extension

UNIVERSITY OF WISCONSIN-MADISON
OZAUKEE COUNTY

Dear 4-H Families,

Welcome to the Ozaukee County 4-H Program!

When participating in 4-H, youth grow and develop as individuals, learn life skills, get involved in their communities, and gain leadership experience that will help them throughout their lifetime. Strong youth-adult partnerships provide opportunities for having fun while learning by participating in research-based, practical hands-on experiences through community 4-H clubs, county-wide activities, and 4-H projects.

The purpose of the Program Guide is to provide an overview of the opportunities and resources available to help your family have an incredible experience in 4-H. Continue to stay informed by carefully reading the monthly Ozaukee County Harbinger 4-H Newsletter. Your family will be emailed the newsletter each month after you officially enroll and become a 4-H member through Wisconsin 4HOnline. We encourage you to regularly visit the Ozaukee County UW Extension website at <https://ozaukee.extension.wisc.edu/> and the UW-Madison Division of Extension 4-H website for additional and on-going information and resources: <https://4h.extension.wisc.edu/>

Your Club Leader has volunteered to take that role, and from time to time, could use your help with various tasks. Please reach out to your leader throughout the year and ask what you can do to support your child's club. Your club will be able to accomplish so much more if parents and guardians share some of the responsibilities with the leader.

Please don't hesitate to call the Ozaukee County UW Extension office at 262-284-8288 if you have questions about the 4-H program.

Thank you!

Abi Quinlan, 4-H Program Educator

What is 4-H?

4-H is a Positive Youth Development Organization that empowers young people to reach their full potential. 4-H is the nation's largest youth development organization – empowering nearly six million young people with the skills to lead for a lifetime.

4-H is a Youth Development Program of the United States Department of Agriculture, National Institute of Food and Agriculture, and delivered by the Cooperative Extension System, a community of the nation's land-grant universities. In Wisconsin the University of Wisconsin-Madison Division of Extension is the land grant university working in partnership with state, federal and county governments. 4-H is delivered by a network of land-grant universities and a robust community of 4-H volunteers and professionals.

For more than 100 years, 4-H has welcomed young people of all beliefs and backgrounds, giving young people a voice to express who they are and how they make their lives and communities better.

In 4-H programs, young people complete hands-on projects in areas like health, science, agriculture, and civic engagement in a positive environment where they receive guidance from adult mentors and are encouraged to take on proactive leadership roles. Based on their interests and guided by adult mentors, youth develop their own pathway in 4-H. They select from a broad menu of local 4-H programs. There are hands-on, learn-by-doing, opportunities for everyone.

4-H programs are available for young people ages 8-18. 4-H Cloverbud programs are available for youth ages 5-7.

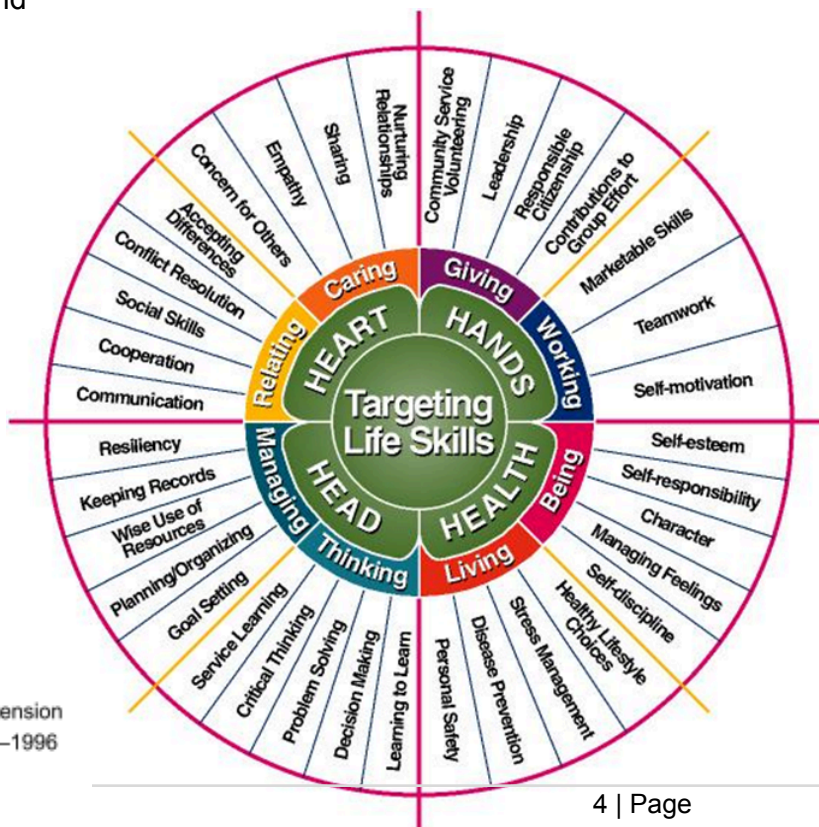
In a safe and enriching environment, 4-H brings youth and adult mentors together to learn life skills through participation in a variety of non-formal educational experiences that support growth and development.

4-H programs are grounded in the belief that young people learn best by doing.

Targeting Life Skills Model

Around the core of "Targeting Life Skills", you will notice the words Head, Heart, Hands and Health. A direct tie to 4-H, the life skills model embeds our pledge and names life skills developed through 4-H.

Reprinted with Permission
© Iowa State University Extension
Targeting Life Skills Model—1996



4-H Emblem and Symbols

4-H Name and Emblem

The national 4-H emblem is a four-leaf clover with the letter “H” on each leaf, with the public law 18 U. S.C. 707 noted next to the clover’s stem. The 4-H Name and Emblem is protected by Public Law 18 U.S.C. 707 and is a national symbol of Cooperative Extension’s 4-H program supported by the United States Department of Agriculture (USDA). The program is defined as the youth education and outreach component of Cooperative Extension Services (CES) at land-grant institutions.



The Four H’s

The four H’s stand for Head, Heart, Hands, and Health.
The meaning of the four H’s is clearly given in the pledge below.

Pledge

4-H members should learn the national 4-H pledge:

I pledge
...My Head to clearer thinking
...My Heart to greater loyalty
...My Hands to larger service, and
...My Health to better living, for my club,
my community, my country, and my world.

The Colors

Green and White are the 4-H colors. The white background of the flag symbolizes purity. The green 4-H emblem is nature’s most common color in the great outdoors, and green is also the color of springtime, life, and youth.

Slogan

“Learning By Doing”

Motto

The national 4-H motto is: “To Make the Best Better.”

Websites

Ozaukee County 4-H: <https://ozaukee.extension.wisc.edu/4-h-youth-development/>

Wisconsin 4-H: <https://4h.extension.wisc.edu/>

National 4-H: <https://4-h.org/>

4-H Terms

4-H Membership

Youth in kindergarten (K5) AND who are 5 years old by Sept. 1 through 13th grade are eligible to join 4-H.

Individuals have an option to extend membership one year beyond high school graduation (13th grade).

4-H Year

The 4-H year in Ozaukee County starts in September and ends August 31.

4-H Fiscal Year

The 4-H fiscal year starts on July 1 through June 30.

4-H Activity

4-H activities are short-term educational and/or social experiences that all Ozaukee County 4-H members may participate in.

Cloverbuds

Youth in kindergarten, first or second grade enroll in the Cloverbuds project. This 4-H project is intended to introduce the members to 4-H. Cloverbuds do not enroll in any other projects but are active members of their 4-H Clubs.

Club Newsletter

Each 4-H Club produces a club newsletter with information specific to their club. Countywide information is contained in the Ozaukee County 4-H Newsletter– *The Harbinger*.

Constitution & Bylaws for Ozaukee County 4-H Clubs & Groups

All 4-H clubs and groups have a set of written rules for the operation. Each member should become familiar with the Club's or Group's Constitution and By-Laws.

Graduation from 4-H

Graduating from 4-H signifies that a member has successfully completed their career as a 4-H youth member. Some 4-H members graduate following high school graduation; however, youth have the option to extend membership one year beyond high school graduation and not to extend beyond the age of 19 as of December 31 of the enrollment year.

The Harbinger- 4-H Newsletter

The monthly Ozaukee County 4-H newsletter is e-mailed to every 4-H family and is available on the web at <https://ozaukee.extension.wisc.edu/4-h-youth-development/harbinger/>. The *Harbinger* provides information about countywide 4-H projects, activities, opportunities, and recognition offered to 4-H members, leaders, and parents. For county, state, national 4-H events, this will be the best source of information.

Member Code of Conduct

Wisconsin 4-H has established a Code of Conduct for all Wisconsin 4-H members. This Code of Conduct sets forth guidelines by which 4-H members should conduct themselves when representing



4-H. Additionally, 4-H identifies rules youth and adults must abide by that are part of enrollment in 4-H Online.

Membership Dues

All members may be assessed club dues for membership and typically are \$5-\$20 per year. Dues support the clubs' 4-H program, accident insurance, and project literature. 4-H clubs, the Leaders Association, and the Ozaukee 4-H Foundation conduct fundraisers to offset program expenses.

Member Record Book

The 4-H Member Record Book is used by some clubs as a way to record all of the members participation in a given year. Each 4-H project and activity youth participating at club, county, state, or national level is entered in the 4-H Record Book. Club Leaders are available to assist with record books. Near the end of the 4-H year, 4-H Record Books are submitted and evaluated according to each club's policy.

Ozaukee County 4-H Facebook & Instagram

The Ozaukee County 4-H social media pages contain timely announcements and photos of past events. Be sure to "like" or follow us to receive this information.

Facebook: **Ozaukee County WI. 4-H** , Instagram: **@ozaukeecounty4h**

Projects

4-H projects are educational experiences that enrolled 4-H youth participate in. Some examples of projects include Photography, Foods and Nutrition, Geocaching, Archery, and Dogs. There may be project related deadlines that need to be adhered to. Consult the project leader for more info. Some projects also have related expenses that aid in equipment, supplies, materials, etc- These expenses vary widely depending on the project selected.

Project Literature

Guides for members and leaders written by National 4-H or University Specialists serve as suggestions for areas of study in 4-H projects. Several projects have informative literature which will be helpful to all 4-H members. We encourage you to use the literature that focuses on your project(s). Club Leaders, Project Leaders and families may access literature from Extension upon request.



Who's Who In 4-H

Club Level

4-H Member

Any youth in grades K5-13 who enrolls with a 4-H club. Members are invited to participate in all club, county, state, national, and international levels of 4-H events and activities. Some of these activities may have age requirements.

4-H Youth Club Officer

Youth member that has been voted into the position of President, Vice President, Treasurer, Secretary or other club officer positions. Club officers all do their part to keep the club running smoothly each year.

4-H Activity/Event Volunteer

Provide leadership/organization for an activity or event and/or participate as a member of an activity or event committee. These volunteers are both youth and adults.

4-H Adult Advisor/Chaperone

Work with a team of adult advisors and 4-H Youth Development staff to ensure youth have a safe and positive educational experience.

4-H Club Enrollment Coordinator

Provide leadership for members and adult volunteers who are enrolling in the club or group organization.

4-H Club Leader

Work with youth and adults to offer a positive youth development experience for young people.

Committee Volunteer

Provide leadership for a committee and/or participate as a member of a committee. Create educational experiences for all youth engaged in the program.

Project Leader

The Project Leader descriptions include: Project Leader, Key Leader, and Resource Leader. Each role has similar qualifications and responsibilities, but slightly different roles that impact project success.

- **Project Leader** - An individual who is responsible for running and maintaining the project area. May work with a small group of youth at a club level or may be volunteering at a county level.
- **Key Leader** - An individual who is responsible for the overall coordination of a countywide project.
- **Resource Leader** - An individual who assists youth and families in finding resources for their project areas

County Level

4-H Program Oversight-

University of Wisconsin-Madison Division of Extension Ozaukee County

Extension Ozaukee County is the community outreach branch of the University of Wisconsin System. 4-H is a Positive Youth Development Program of the University of Wisconsin-Madison Division of Extension. Housed at the Ozaukee County Administration Center located at 121 W Main Street in Port Washington. See Organization chart on page 16.

Ozaukee County 4-H Leaders Association

Ozaukee County 4-H Leaders Association members are leaders within the Ozaukee County 4-H program. Association members serve on committees, plan, and attend activities, fundraisers, and outreach events sponsored by Ozaukee County 4-H Leaders Association. Members advocate the value of 4-H Programs in the County.

Ozaukee County 4-H Leaders Association Board

Ozaukee County 4-H Leaders Association Board members oversee the planning of activities, fundraising and outreach for the association. The Board supports volunteer development and education financially and provides promotion of these opportunities. All members advocate the value of the 4-H Program in the County.

Project Leaders

The Project Leader can be based at the club level or at the county level to offer project experience to 4-H youth either at the club level or throughout the county. Descriptions include Project Leader, Key Leader, and Resource Leader. Each role has similar qualifications and responsibilities, but slightly different roles that impact project success. Ozaukee Countywide projects can be found on our county's 4-H website <https://ozaukee.extension.wisc.edu/4-h-youth-development/countywideprojects/>

Enrolling in 4-H

Youth - General information:

Join a club + pick at least one project.

Find Ozaukee County clubs: <https://ozaukee.extension.wisc.edu/4-h-youth-development/clubs/>

Who can enroll (grade rules):

Use the youth's current school grade at the time of enrollment. Home-schooled youth use a declared grade. If a youth leaves school, 4-H membership follows their original grade cohort.

Safety:

Youth must be officially enrolled in a project to participate in that project's meetings/practices or use equipment. Spectators are welcome, but cannot participate.

Cost:

Clubs may charge dues, typically \$5–\$20/year. Some projects have small additional fees for supplies/equipment.

Code of Conduct:

Reviewed and agreed to during online registration for all members (and adult volunteers).

Project support levels:

Opportunities may be **Countywide**, **Club-level**, or **Self-Determined**. Ask your Club Leader what support exists for your project interests.

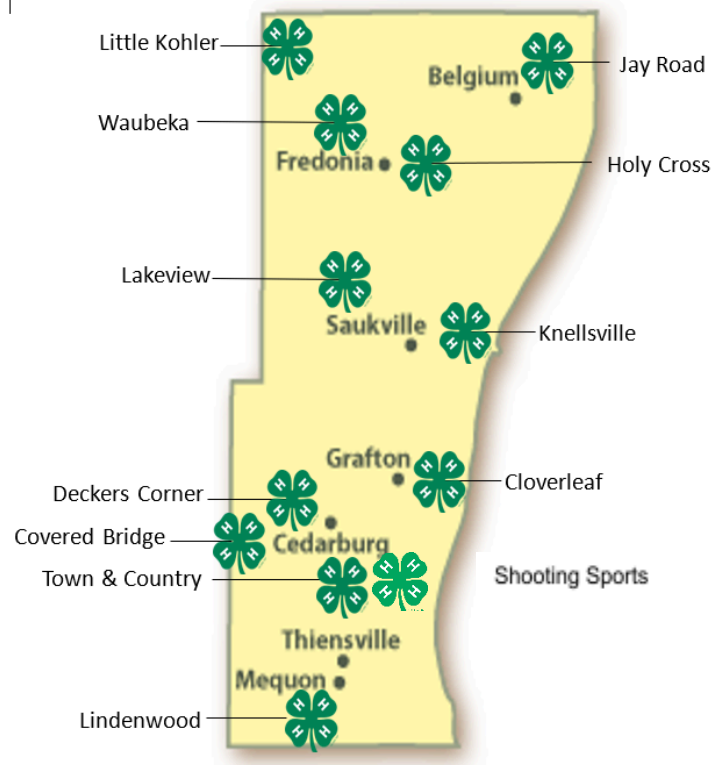
Enroll through 4HOnline

4-H Online is easy to use! 4-H Online version 2.0 is mobile friendly with an intuitive and responsive design! Members enroll on a yearly basis to select their projects, keep contact information up to date and update consents of being a member.

Instructions can be found in the [4-H Family Enrollment Guide](#) for both youth and adult re-enrollments. Please USE this reference guide for step-by-step instructions! Additional Resources: [4HOnline 2.0 for Families](#) link. The following pages describe the enrollment process step by step.

Ozaukee County 4-H Clubs

Although youth can join any 4-H club, most people select a club that is close to home. If you have any questions or need help with the process, please call Extension at 262-284-8288, or contact a Club General Leader, see below.



Name of Club	Meeting Dates & Locations	Contact	Phone/Email
Cloverleaf	Fairgrounds—Pavilion South, Cedarburg 2nd Monday @ 6:00pm	Dorothy Parchim	262-370-4745 rondorpar@yahoo.com
Covered Bridge	Fairgrounds – Pavilion North, Cedarburg 2nd Thursday @ 6:30 pm	Sue Karolczek	262-377-0237 suzyak22@gmail.com
Deckers Corner	Fairgrounds – Pavilion North, Cedarburg 2nd Monday @ 7:00 pm	Jean Wills	262-689-4140 jeanniebean526@yahoo.com
Holy Cross	Divine Savior Parish, Belgium 1st Monday @ 6:45 pm	Linda Szczerbinski	262-483-1422 linda.szczerbinski@cuw.edu
Jay Road	Belgium Legion Hall, Belgium 1st Monday @ 7 pm	Brenda Mueller	920-980-9250 Dmueller84@wi.rr.com
Knellsville	First Congregational Church, Port Washington & Roden Echo Valley Farm, West Bend 2nd Thursday @ 6:30 pm	Becky Assmann	262-689-4606 roden.becky@gmail.com
Lakeview	Saukville Town Hall, Saukville Second Monday @ 6:30 pm	Amanda Kurlinski	414-640-3768 kurlinski5@hotmail.com
Lindenwood	Lindenwood School, Mequon First Monday @ 6:30 pm	Carol Boehlke	262-242-4862 boehlkerandc@hotmail.com
Little Kohler	The Woods, Fredonia Second Wednesday @ 7:00 pm	Darlene Goehring	920-946-5799 wdgoehring@gmail.com
Shooting Sports	Fairgrounds – TBD.	Wade Liljegen- Archery John Jacque- Air Rifle Eric Hackert- Rifle Mark Larson- Shotgun	262-389-8781 wlljegen@wi.rr.com 262-365-3188 jacquejfive@aol.com 262-707-6732 bikin4fun@yahoo.com 262-376-0298 mark.larson@gebosc.com
Town & Country	Fairgrounds – Pavilion North, Cedarburg Fourth Tuesday @ 7:00 pm	Jodi Rogahn	608-358-2383 jrogahn@gmail.com
Waubeka	Americanism Center, Waubeka Fourth Tuesday @ 6:30 pm	Bob Eichner	262-692-9905 reichner@wi.rr.com

4-H Projects

A project is the topic you choose to explore during the year — anything from art to animals, woodworking to science. Projects are where 4-H's "learn by doing" happens.

Project vs. Exhibit

- A project is what you learn about.
- An exhibit is what you create from that learning and youth may bring the exhibit to the County Fair for feedback.
- When enrolling, you sign up for a club and a project, not for your fair exhibit.

Enrollment rules

- Youth in grades 3 through 13 must enroll in at least one project each year.
- Youth in kindergarten through grade 2 enroll only in Cloverbuds.
Some projects have specific grade or enrollment requirements.

Project leaders

Each 4-H club will attempt to obtain a Project Leader when there are three or more members enrolled in a project. The Project Leader will notify members when and where the project meetings will be held. Most projects will require at least three project meetings or 6 hours of learning content, and often more are held. When there is not a Project Leader, the member will be expected to work individually. As a family, you can use the 4-H project literature to guide your learning.

Project Leaders Needed!

If you have an interest, skill, or hobby you'd like to share, please contact your Club Leader or the Extension Ozaukee County office at 262-284-8288. 4-H offers volunteer training and a variety of curriculum materials to help you get started.

Ozaukee County 4-H Projects

A list of Ozaukee County 4-H projects can be found using the Ozaukee County 4-H Program Listings at a Glance document. Click on link to access OR scan QR code to access.

[Ozaukee County 4-H Project Listings at a Glance](#)



4-H Countywide Activities and Events

Each club may have special activities throughout the year. There are also countywide activities and events that 4-H members may participate in. Below is a partial listing of county-wide events that may be offered. Many other project-related activities and events are held annually. Event information is typically shared in the 4-H Newsletter—*The Harbinger*.

4-H Camp

The annual 4-H summer camp is a multi-day adventure! 4-H camp challenges members to try new activities, create craft items, swim, explore nature, and have fun at campfires. Different experiences are offered for those in grades 3-6 and grades 7–9 to meet new challenges and develop outdoor skills. Youth in grade 9-13 can apply to be camp staff members.

Clothing Revue

Participants in the clothing project may select to model garments they have constructed at the style show held during the Clothing Revue event. Garments are evaluated on suitability of garment to individual, general appearance, construction in relation to general appearance, and wearability.

Community Service

Each year 4-H members participate in community service events with their clubs or counties. 4-H members contribute thousands of hours each year to their communities. It's part of the 4-H Pledge to provide our hands to greater service to our clubs, our communities, our country, and our world.

Leaders Association Sponsored Activities

The Ozaukee County 4-H Leaders Association organizes special events throughout the year that bring youth and families together for fun, fundraising, and community connection. These activities include The Haunt, Clover Cafe, and larger public fundraisers such as the county wide dance. Proceeds are used to support countywide initiatives and youth, including those attending 4-H opportunities such as Space Camp, Citizen Washington Focus (CWF), and American Spirit.

Mr. and Miss Ozaukee 4-H Contest

Each year, outstanding 4-H members can self-nominate to participate in the Mr/Miss Ozaukee 4-H contest at the County Fair. Throughout the year, these representatives help with promotional activities within 4-H, act as emcees, help present awards, attend County Board Exchange, and assist with other various 4-H events and activities.

National 4-H Week

The first full week in October is set aside each year to recognize and promote 4-H across the country. Projects will be displayed at county libraries to promote 4-H in their community.

Pinewood Derby/Pinewood Derby Build Day

The 4-H Ambassadors sponsor a community Pinewood Derby race to give youth an opportunity to craft and race a car in the competition. Pinewood Derby encourages youth to apply science and engineering principles while creating an award-winning car.

For more countywide opportunities, please check the Ozaukee County 4-H website, <https://ozaukee.extension.wisc.edu/4-h-youth-development/events/>, as events are updated often.

Volunteering: How Can You Help?

Becoming a 4-H Volunteer

Volunteers are the heart of 4-H and make the program possible. They serve as club leaders, project leaders, chaperones, and more. While experience levels vary, all volunteers share one goal: making a positive difference for young people. In return, volunteers gain valuable skills and strengthen their communities.

How to Become a Volunteer

All adults age 18 and older who are no longer members must complete:

- Required orientation and training to prepare for their role
- A background check every two years
- Agreement to uphold the values and expectations of 4-H
- Ongoing training opportunities to support safe and positive experiences for youth

Some roles, such as shooting sports leaders or overnight chaperones, may require additional preparation. To get started, contact your club leader, local 4-H educator, or the Extension Ozaukee County office.

Volunteer Roles in Wisconsin 4-H

- **Activity and Event Volunteers** organize or lead events
- **Adult Advisors and Chaperones** ensure safe, positive experiences
- **Club Enrollment Coordinators** support club enrollment
- **Club Leaders** provide leadership for a club
- **Committee Volunteers** help lead or participate in committees
- **Project Leaders** guide learning in a specific topic

Training and Screening

All adult volunteers must complete the required training and a background check before working with youth. Most training is offered online and in flexible formats.

Helping Without Volunteering

If you are not ready for a formal volunteer role, you can still help by bringing snacks, setting up or cleaning up, or offering other support. Every contribution makes the 4-H experience stronger for youth and families.

4-H State, National, and International Opportunities

As a 4-H member, you have many opportunities to find your “spark” through experiences at not only the club and county level but also at the state, national, and international levels. A “spark” is something that inspires curiosity, feels exciting, and you’d like to learn more about.

Are you ready to take the next step in 4-H and learn more about these opportunities? Please reference the [WI 4-H Program & Educational Experiences](#) webpage for this information.

Information about statewide teams, national trips, exploring the world through international travel, and more all can be found in one place:

<https://4h.extension.wisc.edu/opportunities/statewide-events-and-opportunities/>

Funding Support & Scholarships

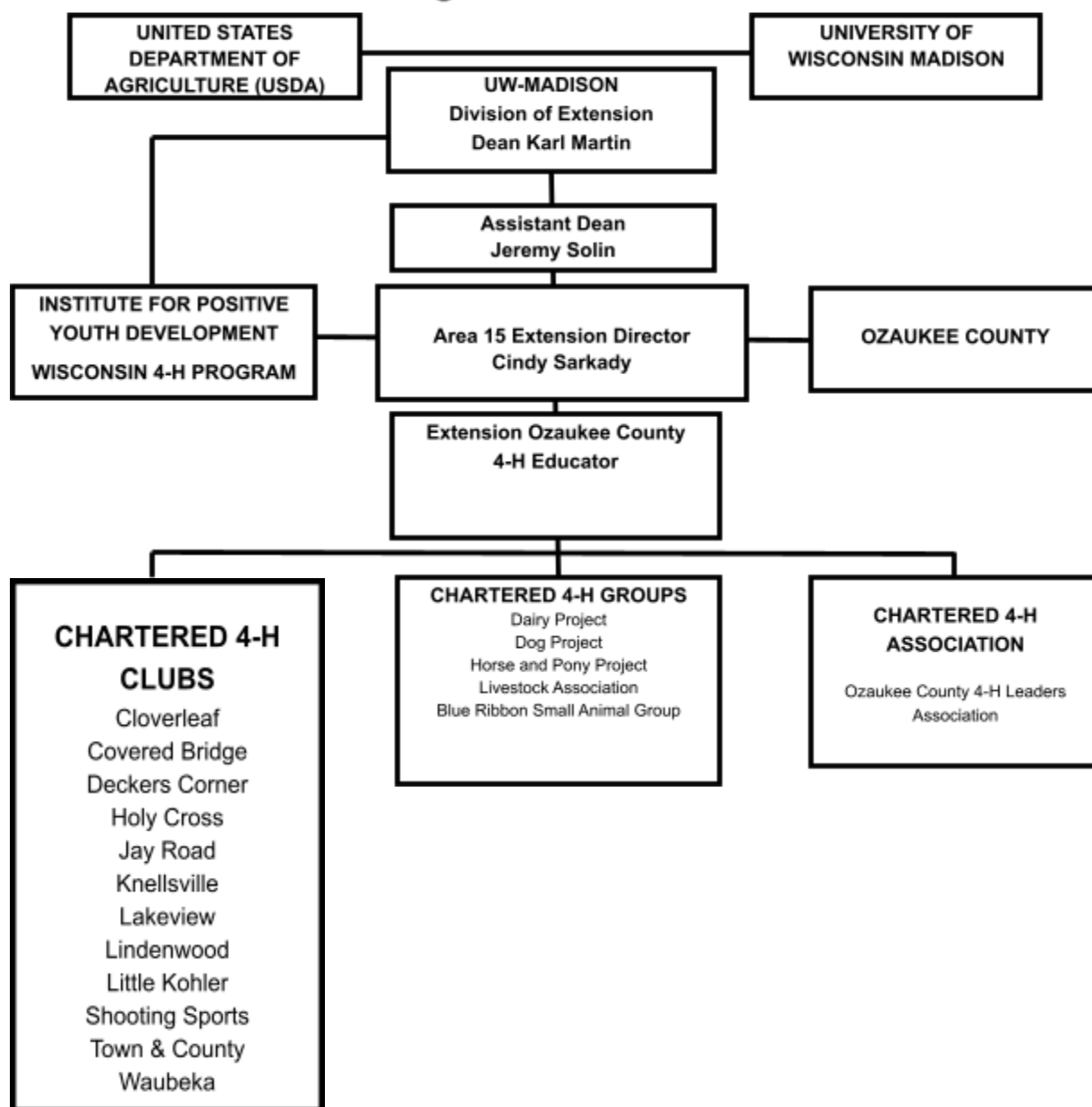
- The Ozaukee County 4-H Leaders Association and Ozaukee County 4-H Foundation provide annual funding support for youth participating in National and International Educational Travel Experiences. Typically, youth delegates pay between 25-50% percent of the actual cost of traveling as a delegate of Ozaukee County 4-H program.
- The Ozaukee County 4-H Foundation also awards higher education scholarships annually to Ozaukee County 4-H members.
- Statewide Scholarships: Need-based Statewide Scholarships are available for State Educational Experiences, which are made possible through donations to the Wisconsin 4-H Foundation. You can find more information and [apply for a scholarship here](#).



Extension
UNIVERSITY OF WISCONSIN-MADISON
OZAUKEE COUNTY



4-H Organizational Chart



What are Sparks?



Everybody has a:

Skill or talent (Music, art, sports, etc.)

Interest (Vintage films, cars, fishing)

Special Quality (Empathy, intelligence, spirituality)

Passionate Commitment (Social justice, environmental advocacy, pet adoption)

We call these things **Sparks**.

Sparks are self-discovered and self-identified. They come from deep within and provide energy, joy, purpose, and direction in one's life.



Youth sparks are an essential ingredient of thriving. Having a spark or sparks gives a young person a sense of direction and encourages goal setting. Sparks are different from mere leisure activity in that:

Sparks create actions that not only contribute to the benefit of the young person, but also society at large.

Sparks provide the intrinsic fuel for a young person's growth in knowledge and skill.

Sparks enhance a young person's networks as he or she encounters others with similar sparks, particularly adults with expertise who can facilitate learning and opportunities for engagement.

Every young person has the potential to have a spark!

In 4-H, youth are empowered to develop their sparks and to use them to make the world a better place. 4-H is based on a positive youth development (PYD) approach that recognizes all youth have interests, abilities, and strengths that can be enhanced by participation in 4-H programs.