



Research Title (20 Words Max, Times New Roman, 15, Bold, Center)

Author 1¹, Author 2^{2*} (Times New Roman, 11, number subscript for affiliation, *corresponding author)
 (Author's name only consists of first and given name)

¹ Institution (department or research group), Faculty, University, City, Postal Code, Country (Times New Roman, 10)

² Institution (department or research group), Faculty, University, City, Postal Code, Country (Times New Roman, 10)

Article Info	ABSTRACT
<p>Article History Received: Revised: Accepted: Available online: * Email (Author Corresponding) :</p>	<p>Abstract is informed about the statements of the problem, methods, scientific finding results and conclusion concisely. Maximum of 200 words. (Times New Roman, 10, single spacing). Keywords: (Min. 3 words,)</p>

Introduction (Times New Roman, 12, Bold)

Introduction presented briefly and clearly information concerning background, literature review, and aim/purpose of the research. This part should be written using Times New Roman 12 and justified. Between the first sentence and the subtitle is given 0 pt spacing. Then, between the last sentence and the next subtitle is one space.

Authors must use the APA 7th edition citation style for all references, ensuring that sources cited in the reference list are also cited in the text; for in-text citations, include the author's last name and year of publication, for example: (Smith, 2020) for a parenthetical citation or Smith (2020) for a narrative citation. For works with three or more authors, APA 7th edition requires using the first author's last name followed by et al. from the very first citation (e.g., Johnson et al., 2019).

Materials and Methods (Times New Roman, 12, Bold)

Materials (Times New Roman, 12, Italic)

The materials must be written completely with the brand name and its purity grade. Between the subtitle and the first paragraph is given 0 pt spacing then one enter for the last sentence with the next subtitle.

Subtitle (Times New Roman, 12, Italic)

Results and Discussions (Times New Roman, 12, Bold)

Subtitle (Times New Roman, 12, Italic)

Results and discussions must be written by Times New Roman 12, single spacing. Between the subtitle and the first paragraph is given 0 pt spacing then one enter for the last sentence with the next subtitle. In this part contains result of research and scientific discussion. The

result of research and must be supported by sufficient data. Result and discussion be presented continuously start from main data until supporting data and completed with discussion. Furthermore, it should be explained also in comparison with the results of other researchers about the same topic. The results of the research and findings must be able to answer the research hypotheses in the introduction. Unit of measurement used should follow the international system.

Subtitle (Times New Roman, 12, Italic)

Figure: Figure caption is put in the bottom of figures, Times New Roman, 11, single spacing, 0 pt after paragraph, center. Graphic and scheme is included as figure. The figure must be clear and high resolution of 300 dpi. Please always use editable figure whenever possible, such as from Microsoft Excel. The author can send the graph or data of the scheme separately to allow the layout editor to reproduce it well when printed out. Where possible, place figure side by side using borderless table and label it clearly by (a), (b) etc. with a single figure caption. Use **Fig. 1**, **Fig. 2**, **Fig. 3**, and so on to refer the figure.

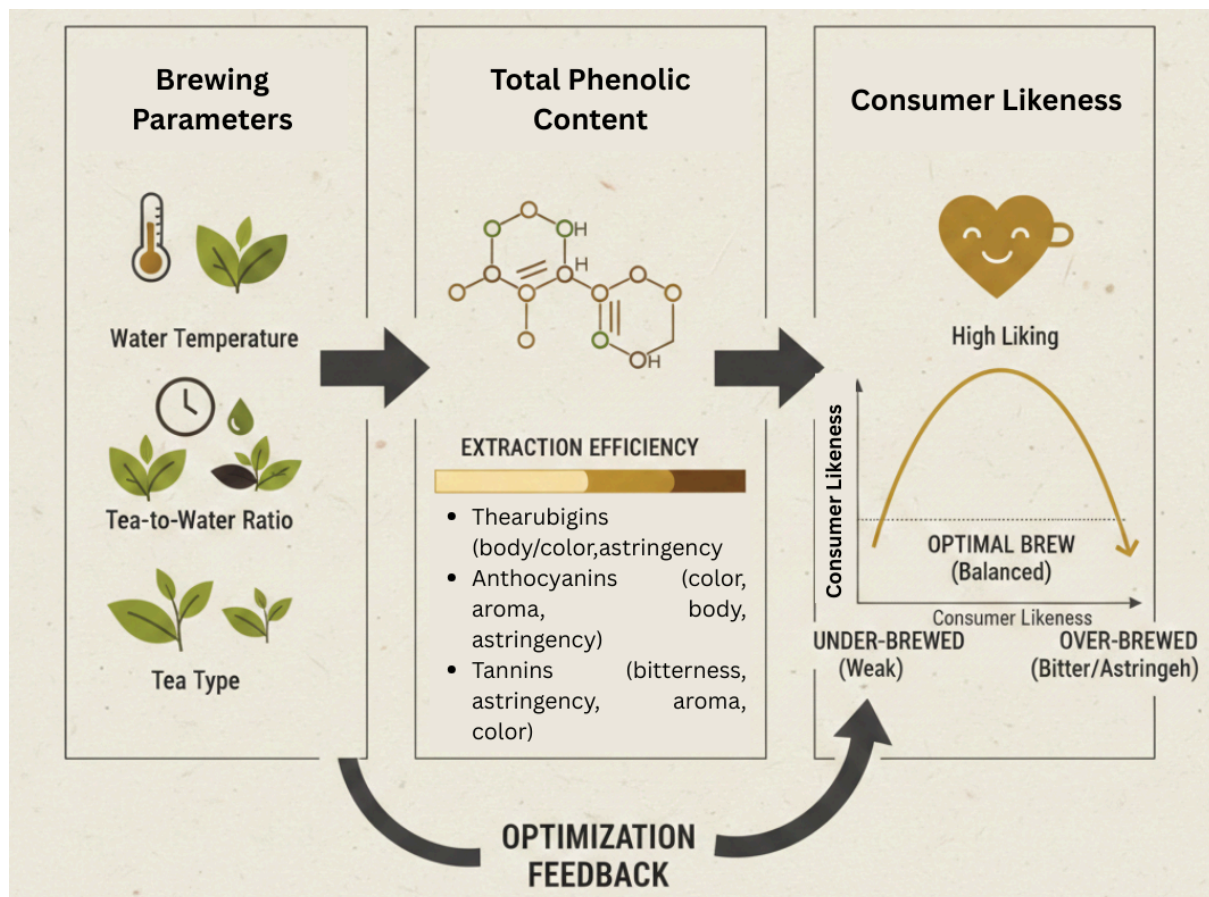


Figure 1 (Bold, 11, Center). Schematic Overview.

Table: Table caption is put on the top of tables with Times New Roman, 11, bold, single spacing, justified, and 0 pt after the last paragraph. The table is placed on 0 pt after table caption and the content is written by Times New Roman 11 and center. Notes of the table (If any) were written using Times New Roman 11, single spacing, align justified and 0 pt after



the table. The next paragraph is written 0 pt after the table notes. Header of the table must be written in bold. If the table is unfit in 1 page please follow: block the header then choose table layout>>layout>>repeat header rows. Border of the table only in the top and bottom of table. Always adjust each table with AutoFit Window feature. Use **Table 1**, **Table 2**, **Table 3** and so on to refer the table.

Table 1 (bold, 11, justified). Bread Size

No	Flour Base	Diameter (cm)
1	Corn flour	3.0
2	Rice bran flour	3.2
3	Rice flour	4.2
4	Gluten free flour	3.6
5	Sweet tuber flour	2.9

Note: table's note.

Conclusion (Times New Roman, 12, Bold)

Conclusion describes the answer of the purpose research and should be explained clearly. In the end conclusion, it can be added a suggestion. The suggestion contains recommendation or advices for next research.

Acknowledgement (Times New Roman, 12, Bold)

Acknowledgments stated to the grant source and the person to whom the grant was given. Acknowledgment can also be addressed to person who helps the research.

Conflict of Interest (Times New Roman, 12, Bold)

Authors must disclose any financial or non-financial relationships, interests, or circumstances that could influence or be perceived to influence the research presented in this manuscript. If there is no conflict of interest, author may write "No conflict of interest".

References (Times New Roman, 12, Bold)

All references must be written in the list of references. The reference is written using reference manager in Ms. Word or using Mendeley or Zotero based on American Psychological Association 7th edition style. Please generate the references using Mendeley or Zotero automatic bibliography feature.