

Ouray School District R-1
School Operations Guidance
2021-22



Version 3.1 - March 3, 2022

Interactive Table of Contents

Introduction	3
Transition to Routine Disease Control Model	3
Elements of the Routine Disease Control Model	4
Cluster and Outbreak Response	4
Parent Choice in Quarantine Avoidance	5
Test to Stay Program	5
Student Transportation	5
Guests, Visitors, and Volunteers	6
Community Events	6
Public Health Measures	6
Vaccination Guidance	6
Student Illness	7
Isolation of Cases	8
Quarantine Procedures	8
Outbreak Response	9
Serial COVID-19 Testing	9
Mask Guidance	9
Physical Distancing	10
Ventilation	10
Handwashing	10
Sanitation	10
Seating Charts	11
Learning Models	11
In-person Learning	11
Emergency Hybrid Learning	11
Emergency Remote Learning	11
School Structures	12
Transportation	12
Parent Drop-off & Pick-up	12
Student Entrances	12
Lockers and Hallways	13
Classroom Structures	13
Cafeteria	13
APAC & Gym Capacities	13

Mental Health and Well-Being of All	14
Social and Emotional Learning (SEL)	14
Classroom-level Supports	14
School-based Supports	15
Parent & Community Involvement	15
Classroom Participation	15
School Visitors	16
Classroom Volunteers	16
Family and Community Partnerships	16
Policy and Financial Management	17
Policy Examination	17
Federal Relief Funding Priorities	17
FY 2021-22 Federal Funding Expenditures	18
Appendices	19
Appendix A: Primary Resources	19
Appendix B: Health Screening Guidance	19

Introduction

The primary goal of Ouray School District is to ensure the health and safety of our students and staff and focus on continued success with in-person learning with as few barriers as possible. We will work to provide a healthy and safe environment based on up-to-date scientific data with the flexibility to make changes to support our goal to maximize in-person learning while reducing risk. The following guidance is built on the most current guidelines and conditions, but these may change. Public health guidelines may alter in response to new conditions including new variants of COVID-19.

Guiding Principles:

1. Providing a safe working and learning environment.
2. Providing high quality in-person instruction with adaptability for emergency situations.
3. Providing support for the social and emotional needs of staff and students.

This School Operations Guidance follows guidance provided by the Colorado Department of Education (CDE) and the Colorado Department of Public Health and Environment (CDPHE).

With staff feedback, Ouray School District is focusing Cares Act money towards the following priorities within this guidance:

- **Staff and Student Health** - expanded nurse hours to address health protocols and supports.
- **Staff and Student Wellness** - expanded counseling services to focus on social and emotional needs.
- **Intervention Support** - additional staff and resources to guide struggling learners towards grade-level expectations.
- **Sanitation** - additional staff to maintain a clean facility that addresses high touch areas and cleaning protocols.
- **Tools and Professional Development** - support staff and students with learning tools and the support to use them effectively.

Transition to Routine Disease Control Model

Ouray School makes decisions about COVID-19 based on current data from:

- 1) county and regional transmission rates and
- 2) school and community vaccination rates

The school receives guidance from the Center for Disease Control (CDC), Colorado Department of Health and Public Environment (CDPHE), and the Colorado Department of Education (CDE). The following model is now part of the *Practical Guide for Operationalizing CDC's School Guidance*, and a suggested implementation date of February 28, 2022, and when local

COVID-19 transmission rates fall below the high or substantial levels. **Ouray School officially transitions to the routine disease control model on Monday, March 7, 2022.**

The routine disease control model moves the school away from the **case-investigation response model** to one more typical for schools in responses to other communicable diseases. While the school will still track and monitor individual COVID-19 cases, the strategic focus will be responding to clusters or outbreaks of cases. In partnership with Ouray County Public Health, Ouray School will respond with additional mitigation strategies for an outbreak of five or more non-family cases identified in a 14 day period or a cluster of cases of three or more in a week within a single class group.

→ [CDPHE: Transitioning to a Routine Disease Control Model](#)

Elements of the Routine Disease Control Model

Routine disease control measures include the following.

- Continue to encourage vaccination of staff and students;
- Isolation requirements for ill and COVID-positive staff and students;
- Recommend but not require masking at all grade levels;
- Continue with opt-in COVID screening;
- Track attendance and illness data to identify clusters and outbreaks;
- Continue to report identified cases to public health;
- Continue to require quarantining for family-related exposures; and
- Communicate with families about cluster and outbreak situations.

Routine disease control does not include the following, unless there is a cluster or outbreak.

- Individual case investigation and contact tracing;
- Quarantine of students and staff with school-related exposures.

Cluster and Outbreak Response

When a cluster of cases in a single class group or an outbreak is identified, the school will implement additional mitigation measures to control the spread of the virus. Additional mitigation strategies can include the following.

- Limiting the mixing of classroom groups
- Universal masking for staff and students on a temporary basis
- Implement temporary universal testing of staff and students, such as with CDE's Test to Stay program (below).

→ [CDPHE: Outbreak Response Flow Chart](#)

Parent Choice in Quarantine Avoidance

During higher covid transmission periods and before vaccines were available to all age groups, schools chose universal masking as a primary strategy to avoid quarantines and disruptions of learning. During lower transmission periods, Ouray School supports additional mitigation strategies to avoid quarantines during cluster and outbreak response.

You are *exempt from quarantine during cluster cases and outbreaks* if you meet one or more of the following criteria.

- **Vaccination.** Up to date with recommended COVID-19 vaccination
- **Previous documented COVID-19.** Viral test confirmed case of COVID-19 in the last 90 days
- **Masking.** You and the case were wearing a well-fitting mask during exposure
- **Screening.** Participating in weekly COVID-19 screening and will continue to participate for an additional two weeks, or you opt in to the Test to Stay program outlined below.

Following an exposure, Ouray School requires that you continue to monitor for symptoms and wear a well-fitting mask consistently and correctly around others for a full 10 days.

Test to Stay Program

Ouray School is participating in the CDE Test to Stay program that allows exposed staff and students to stay in school after a typical classroom exposure when they commit to temporary COVID-19 testing provided by the school as well as wear a well-fitting mask around others for 10 days.

When opting in to the Test to Stay program, participants agree to the following requirements that allow them to remain in school.

- Monitor for symptoms daily for a full 10 days after exposure
- Test twice using the Abbott BinaxNOW test kit provide by the school
 - Once upon notification of close contact / exposure, and
 - Again 5-7 days after the close contact with a person with COVID-19
- Continue to remain asymptomatic and test negative
- Report testing results as instructed using the Abbot Navica App (available in your app store)
- Wear a well-fitting mask correctly around others for 10 days
- If symptoms develop or you test positive, stay home and follow isolation instructions

→ [CDPHE: Colorado's K-12 Test To Stay Program Flow Chart](#)

Student Transportation

In alignment with CDC guidelines and reduced COVID-19 transmission rates in Ouray County, Ouray School will not require masks to be worn on bus transportation. Masks are optional and are by student and family choice. District staff will not manage a family's choice on this matter. The transportation guideline is in place for both route and activity trips on bus, mini bus, and district vehicles effective March 7, 2022.

→ [CDC: Requirements for Face Masks on Public Transportation](#)

Guests, Visitors, and Volunteers

Ouray School will apply all COVID-19 mitigation strategies and restrictions equally to parents and community members visiting the school, including volunteers, while the community remains at low levels of transmission. Upon signing in at the main office, all visitors must continue to follow guidelines of not entering when sick and wearing a mask when completing quarantine or isolation guidelines. Masks will be provided but are optional for healthy individuals.

Volunteers are welcome in the building. Regular or periodic volunteer work can be established with the classroom teacher at their need and discretion.

Community Events

Ouray School will apply all COVID-19 mitigation strategies and restrictions equally to community events at the school while the community remains at low levels of transmission. These include events in the Abrams Performing Art Center (APAC), Ouray School Gym, and any space requested for community use. Masks will be provided at all entrances but are optional and not required. All participants are asked to respect the individual right of all participants to choose to wear a mask or not.

Public Health Measures

Ouray School will follow public health measures that support the health and safety of staff and students while respecting the small size and capacity for efficient response to issues. While the school has all grade levels under one roof, class sizes are small, and elementary, middle, and high school students will remain mostly in separate parts of the school building. This section covers public health measures for students while at school and during school directed activities. When collaborating with another entity or organization, such as for student travel, Ouray School will follow the stricter of the guidelines.

Vaccination Guidance

Vaccines are the best defense against COVID-19. Ouray School strongly recommends that all eligible students and adults get vaccinated for COVID-19 and the booster shot when qualified. To be fully vaccinated, staff and students 18 and over must complete the entire sequence of the vaccine and obtain the booster when the specified time has passed. Students under the age of 18 will be considered fully vaccinated if they have completed both doses of the initial sequence. The school will not require students to be vaccinated to attend school. Families will choose for their children based on their own family situation. To the best of its ability, the school will respect that confidential information regarding vaccination status remains with the family and school health vaccination records. Ouray School will be continuing its student travel initiatives wherever allowable in the 2021-22 school year, and some of these destinations may have their own requirements regarding vaccination. Staff and students who choose to join these trips will be required to meet the guidelines and requirements of the destination.

Student Illness

Parents will take the lead on illness and symptom screening and keep students home when not feeling well. Ouray School will not screen all students for COVID-19 symptoms per guidance from the CDC. If a student self-reports or staff reports that a student is ill, then the school will require the parent to take the student home. Symptoms can include the following.

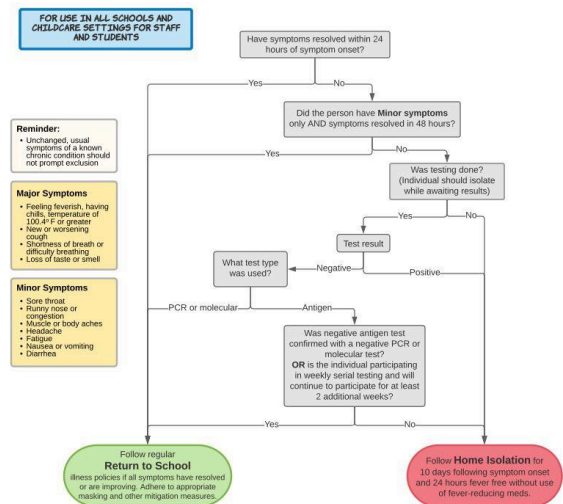
Major Symptoms

- Fever or chills, temperature of 100.4 or greater
- New or worsening cough
- Shortness of breath or difficulty breathing
- New loss of taste or smell*

Minor Symptoms

- Sore throat
- Congestion or runny nose
- Muscle or body aches
- Headache*
- Fatigue
- Nausea or vomiting*
- Diarrhea

* These symptoms have become more common with the Delta variant in positive cases in our region.



Return to School Protocol

- Symptoms (minor) clear within 24 hours → return to school
- Symptoms (minor) clear within 48 hours → return to school

- Major symptoms or minor symptoms persist beyond 48 hours → consult a physician and get a COVID-19 test; may return with a negative test
- CDE: [Return to Learn following symptom screening](#)
- CDE: [At Home COVID-19 Symptom Screening Tool for Parents and Staff](#)
- CDE: [Addressing Symptoms at School](#)

Isolation of Cases

Students and staff who have a confirmed or probable COVID-19 case are required to isolate for five (5) days. Isolation concludes when five (5) days have passed since symptoms first appeared and you have no fever for at least 24 hours and other symptoms have improved. Staff and students may return to school and community participation after the fifth day but must wear a tight-fitting mask (KN-95 or surgical mask) for the next five days. No additional COVID-19 test is required to return to school.

Key elements of isolation include the following.

- Stay home, except to get medical care
- Monitor your symptoms
- Separate yourself from other people and animals in your home
- Wear a face covering when you must be around others and pets
- Wash your hands frequently and avoid touching your face and eyes
- Clean surfaces regularly
- Avoid sharing household items

→ CDPHE: [How to Isolate](#)

Quarantine Procedures

Students with a confirmed exposure to COVID-19 will have to quarantine from school unless they meet one of the exceptions below. All dates for quarantine will be determined based on the most recent date of exposure.

1. Is the exposed student fully vaccinated (including booster when applicable)? Yes ⇒ no quarantine
OR
Has the exposed student had confirmed COVID-19 in the last 90 days? Yes ⇒ no quarantine
2. Five (5) day* quarantine from the last date of exposure and return symptom free, and wear a tight-fitting mask (KN-95 or surgical mas) for five days thereafter
3. A COVID-19 test is recommended before return to school. Get a COVID-19 test from public health if you develop symptoms.

* Most students qualify for a 5-day quarantine limit; students who are in regular contact with a high-risk individual who is not vaccinated should do a 14-day quarantine.

Exceptions

The following are exceptions to the quarantine procedures and do not have to quarantine due to a typical classroom exposure unless they are in regular contact with a high-risk individual who is not vaccinated.

- Vaccination - student is fully vaccinated, including booster at prescribed time
- Total vaccination rate - student is a part of a school that is >80% vaccinated (staff and students, at least one dose)*
- COVID-19 Positive - student had a confirmed case of COVID-19 within the last 90 days
- Serial testing - student participates in the serial weekly testing
- Mask compliance - exposed and positive students were both wearing masks properly at the time of exposure

*Revised September 10, 2021, by CDPHE

- [CDPHE: Who Needs to Quarantine](#) (graphic decision tree)
- [CDPHE: How to Quarantine](#)

Outbreak Response

The CDPHE recently redefined the “Outbreak” definition for schools. A school outbreak is defined as five (5) or more cases in a 14-day period. Ouray School will respond to outbreaks with contact tracing and individual and/or class quarantines. Additionally, all spaces that had COVID-19 positive individuals will undergo a deep cleaning by custodial staff. Ouray School will work with Ouray County Public Health in its communication and response to staff, students, and community members.

Serial COVID-19 Testing

Ouray School will provide optional serial weekly testing for unvaccinated individuals and students or staff who are participating in higher exposure activities, such as indoor athletics. If the school has at least 70% of unvaccinated students and staff actively participating in serial testing, students and staff should not be required to quarantine following typical classroom exposures to a positive case of COVID-19.

Mask Guidance

Ouray School will require all staff and students to wear face coverings inside buildings for the start of the 2021-22 school year. The mask should be multi-layered and fit snugly around the nose and mouth. Buffs and bandanas are not acceptable face coverings. All classroom and event visitors must wear face coverings regardless of vaccination status. All school policies on face coverings apply for Ouray staff and students when traveling to other schools and locations.

Exceptions to face covering requirements include the following.

- All outdoor activities
- Schools exceeding 80% staff/student vaccination rate and low community transmission
- Student service requirements such as speech language instruction for IEPs
- Situation exceptions involving the mental or physical health of individuals

The school will continue to monitor local transmission rates and youth vaccination rates to make future decisions regarding relaxed mask guidelines.

Vaccination Rate Exceptions (Revised September, 2021)

When a school cohort - elementary, middle, or high school - meets the CDPHE minimum standard of vaccination rate (>80%) for all students and staff, regardless of vaccination status, to avoid quarantines, AND community transmission is low, the school will ease mask requirements in classroom settings to optional. All staff and students are required to wear masks in common spaces, such as hallways, at lockers, in shared spaces, and in congregate settings with other groups. Staff and students may choose to remove masks once inside classrooms.

Physical Distancing

School structures and classroom setups will focus on maintaining a minimum of three (3) foot distance between students but encourage and seek six (6) feet or more where possible. All staff and students will respect this distance in classrooms, hallways, waiting in lines, and in the cafeteria to the best extent possible. When distancing cannot be maintained or when multiple school groups are present, additional layers of preventative strategies such as indoor masking will be used.

Ventilation

COVID-19 and other respiratory illnesses are spread through respiratory droplets produced when we breathe, talk, sneeze or cough. Ouray classrooms will increase ventilation in classrooms by opening windows and doors during warmer months. HVAC systems in each room are equipped with higher rated HEPA filters checked and maintained on a more frequent basis than pre-pandemic schedules. Use of outdoor spaces is encouraged.

Handwashing

Frequent hand washing supports personal health for all students and staff. Hand washing will be encouraged to reduce the spread of all communicable diseases. Effective practices will be taught and rehearsed with younger learners. When hand washing is not possible, each classroom will be equipped with hand sanitizer for staff and student use. The general rule is a thorough washing or sanitizing of 20 seconds or more.

Sanitation

Surface cleaning is not as paramount as once thought, and custodial services will focus on standard cleaning protocols. Ouray School will provide surface, floor, and high-touch surface cleaning on a daily basis. A day custodian will be on hand for high-touch surfaces, addressing classroom issues, cafeteria support, and other needs. Evening custodians will thoroughly clean classrooms. In the event of a positive COVID-19 case within the building, custodial staff will complete a more thorough cleaning and sterilization protocol.

Seating Charts

Seating charts limit the number of students using a classroom resource. Where reasonable, Ouray School classrooms will have seating charts. Consistent seating also assists with contact tracing and close contact definitions. School service providers including special education providers will use classroom spaces that minimize the exposure of students beyond the student receiving targeted services.

Learning Models

In-person Learning

Ouray School is an in-person learning community committed to experiential learning and strong relationships between staff and students. The primary focus and sole learning model for the 2021-22 school year will be an in-person model that increases student interaction and elective options over the previous school year.

- Daily attendance is expected in-person;
- All learning is complemented by support posted in Schoology or Seesaw.

Emergency Hybrid Learning

In the event of individual quarantines that remove a limited number of students from in-person learning for a short period of time, Ouray School will support hybrid learning for select classroom-based activities. This model includes live virtual attendance of classes when possible.

- Schedule follows the daily schedule of classes;
- Student joins class remotely during schedule times but may have independent work;
- All learning is supported by Schoology or Seesaw and Google Meet;
- Students can meet daily attendance requirements (present) by remote presence and activity completion.

Emergency Remote Learning

In the event of larger quarantines that affect a larger group of students, such as those ages that are not eligible for the COVID-19 vaccine, Ouray school will support emergency, short term remote learning.

- Schedule follows the daily schedule of classes;
- All students and staff join class remotely but may have independent work for periods of time;
- All learning is supported by Schoology or Seesaw and Google Meet;
- Students can meet daily attendance requirements (present) by remote presence and activity completion.

School Structures

Transportation

Ouray School will provide students with route transportation as well as school activity transportation for the 2021-22 school year.

All county/regional/state travel for all staff and student groups

- Two (2) students to a seat maximum
- Masks required for all staff and students regardless of vaccination status

Parent Drop-off & Pick-up

Ouray School will continue with both an AM and PM parent drop-off and pick-up routines. Parents may drive through the vehicle lane or walk/park and pick up their student(s) in person.

Vehicle lane

The front parking lot of the school will be the consistent drop-off and pick-up location.

- **Morning drop-off** - Vehicles will proceed up 7th avenue and drop off within the gates of the parking lot. The east doors will be open for elementary students beginning at 8:20 AM.
- **Afternoon pick-up** - Vehicles will proceed down 7th avenue. Elementary grades gather in grade-level groups in front of the school with teachers.

Walk-ups

Parents are invited to connect with teachers before and after school outside of the school for logistics and feedback. Parents are not allowed in the building without a pre-arranged appointment. Parents should schedule a block of time with the teacher for higher need issues.

Student Entrances

The school will continue to use separate entrances for AM/PM time periods, but classes may use the most convenient entrance/exit during other times of the day. Students arriving after 8:30 are asked to check in with the main office before proceeding directly to class.

- Elementary School - east doors
- Middle School - west doors by playground
- High School - main entrance

Lockers and Hallways

Students in grades three through twelve will have access to lockers for the 2021-22 school year. All lockers are grouped by grade level. Locker spacing will be used wherever possible to provide additional social distancing for students. During crowded times, students are asked to (a) be efficient about getting their belongings and (b) wait patiently for clear access to their locker before entering. Exterior locker surfaces will be cleaned periodically. Sterile cleaning may be required in the event of COVID-19 cases and exposures.

Classroom Structures

Ouray School classrooms will help support student distancing of three (3) feet or more but allow for increased collaboration between students. Teachers may continue to use individual desks with flexible seating arrangements, or they may use larger tables for group design. Elementary classrooms may have rugs and other soft furnishings to support circle time and productive use of floor space.

Cafeteria

Ouray School is blessed with federal support for free breakfast and lunches for all students for the 2021-22 school year. At the same time, the school will take on the responsibility to reduce its waste footprint, specifically removing the use of styrofoam and reducing disposable materials.

Breakfast Format. Breakfast will be served in classrooms for grade PK through 8. High school students may pick up breakfast before going to class. This model provides the greatest opportunity for all students to get a healthy start of their day.

Lunch Format. The cafeteria will support all grade levels' lunches. Elementary grades will eat in two groups - K-2 and 3-4, alternating between lunch and recess. Grade groups may be separated when eating indoors. Middle school grades will eat lunch in two groups - 5/6 and 7/8, alternating between lunch and recess. High school students will have an open-campus lunch for allowed grade levels where they may choose to eat in the cafeteria.

APAC & Gym Capacities

Capacities for our larger meeting spaces in the Abrams Performing Arts Center (APAC) and Ouray Gym will be determined by county health order. As of June 2021, there were no restrictions on capacity limits; however, the following guidelines will be followed for large capacity events:

- Masks may be required for multiple cohort groups or community participation, particularly for entering and exiting the venue.
- Audience members will be invited to sit in family groups with at least one empty seat between groups (3 feet).

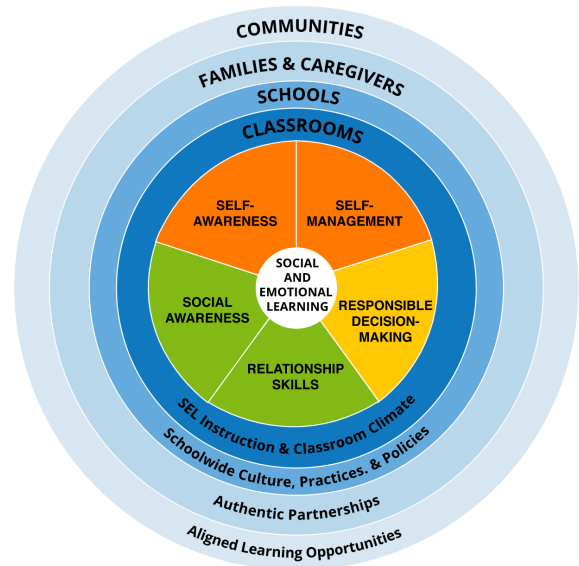
Mental Health and Well-Being of All

Social and Emotional Learning (SEL)

Ouray School District empathizes with the anxiety shared in our community. We expect uncomfortable emotions like normal anxiety to decrease as we share information with stakeholders and especially as students settle into a safe learning environment.

Working with trauma informed pedagogy, the school district calls on all members of our school community to come together and strengthen our social and emotional competencies. Through ongoing communication, the district aims to foster unity in our community and to create equitable learning environments. We will continue to develop a school culture where everyone may safely process their experience, heal and achieve academic, as well as social and emotional, success.

The Collaborative for Academic, Social, and Emotional Learning (CASEL) provides a systemic framework to support our community's development of core SEL competencies as illustrated below. The framework follows guidance provided by our district's Multi-Tiered Systems of Support Team (MTSS).



Classroom-level Supports

Ouray School District recognizes that teachers' social emotional health will be key for classrooms to remain safe learning environments. As such, the district is prioritizing the social and emotional health of our staff and students.

- School staff, teachers, and counselors will deliver developmentally appropriate, evidenced-based social and emotional curriculum throughout the year.
- School staff at all levels will develop practices to support the development of core SEL competencies. This will include taking the necessary time to form and maintain meaningful relationships. The district seeks to ensure each student has one or more trusted adults at the school to turn to when in need. In addition teachers will be providing brain breaks during class periods. Teachers will facilitate an interdisciplinary approach to learning, across subjects, including SEL. The school district will also develop outside learning environments, harvesting the healing power of nature.

School-based Supports

The school district has expanded the school counseling department to include two counselors, Jaceson Cole, LCSW and Kimberly Sills, MA. Counselors will be providing direct social and emotional support services to staff, students, and their families, remotely and in-person, where appropriate, uninterrupted, throughout the school year. Safe counseling spaces, virtual and physical, will be provided.

In addition, the counseling department works with community service providers such as social services, Tri-County Health, The Center for Mental Health, San Miguel Resource Center and Voyager Youth Program to offer a variety of support services to students, staff, and families, including behavioral health training, financial aid to families, and inexpensive and free therapy services. Community resources are far from exhausted and providers are available and eager to serve.

- Knowing that many problematic behaviors are indicative of adverse childhood experiences, discipline will include more restorative practices rather than punitive practices.
- The school district will adjust our Positive Behavioral Interventions and Supports (PBIS) systems to address changes related to Covid-19.
- The school will continue to use Response to Intervention Teams (RTI) protocols to address student social and emotional concerns.
- Systems such as Student Council, Sources of Strength, Communities that Care, and other leadership and service learning projects will provide opportunities for students to feel empowered, develop their agency, and provide mutual aid to the school community. Student outreach will occur prior to and throughout the school year.
- The school district is forming a policy committee and is working to develop culturally responsive policies and procedures to address systemic issues of inequality.

Parent & Community Involvement

Ouray School is committed to reengaging parents in the learning process of their students. The 2020-21 school year took aggressive protective measures that are no longer required.

Classroom Participation

Classrooms, particularly elementary grades, will host regular displays of learning and celebrations where parents will be invited to attend in-person. Classes may change the venue to better accommodate the number of individuals and distancing requirements. Masks may be required for such events when indoors.

- Classroom celebrations
- Student-led conferences, portfolio demonstrations, and presentations of learning
- Award ceremonies

School Visitors

All school visitors must check in with the main office. Classrooms will support community visitors for presentations and partnerships. One-time visitors need not be vaccinated but are asked to wear masks upon entering the building. Depending on the situation, guests may follow presenter guidelines and share with students at a safe distance.

Classroom Volunteers

Ouray School will support regular classroom volunteers if they are fully vaccinated. These individuals will become a regular part of the classroom routine and may follow mask guidelines of the classroom group.

Family and Community Partnerships

- The district will continue to coordinate and provide services to help families maintain social and emotional health.
- The school district will use data as an opportunity to share power, deepen relationships, and continuously improve support for students, families, and staff.
- Counselors will be available during registration week for academic and social and emotional concerns. The district will facilitate open houses, virtual and/or in person, before school and throughout the year.
- The district will seek to maintain two way communication with all families. We want to learn more from students and families regarding their concerns and resilience. What has helped our families navigate this crisis? What do families need? How can families assist the school's mission?

- The school district will continue to partner with Parents And Teachers Together (PATT), District Advisory and Accountability Committee (DAAC), the Board of Education, and other community groups.
- Committees such as Respect and Include Scholars for Empowerment (RISE) and Safer More Affirming Communities (SMAC) promote cultural responsiveness in our community and are actively seeking support from all stakeholders who want to make a positive contribution toward issues such as gender equality, anti-racism, and LGBTQ+ rights.
- The district will continue developing language translation support for better family engagement.

Policy and Financial Management

Ouray School District R-1 and the Board of Education will remain committed to supporting and serving the Ouray community.

Policy Examination

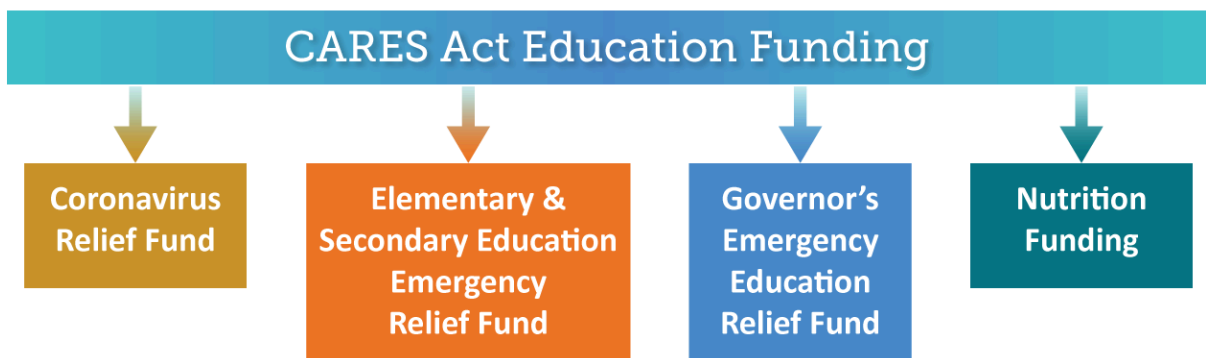
Ouray School District will examine and edit policy to support the following needs in alignment with the Colorado Association of School Boards (CASB).

- Emergency powers to the Superintendent to act in the interest of safety and wellness
- School contact time and district calendar
- Staff leave

Federal Relief Funding Priorities

The federal government has committed to supporting schools and school districts through the CARES Act, which is currently broken down into two funding streams, each with its specific funding restrictions and alignments to the Elementary and Secondary Education Act.

- Elementary and Secondary Education Relief Funds (ESSER II ~\$63K; ESSER III ~\$143K)
- Federal School Lunch Program (~\$100K)



The district has, to date, committed these dollars to the following allowable expenditures as related to the closing and re-opening of school buildings and the health and safety of students and staff:

- Sanitation tools and supplies
- Supporting staff with tools for diverse learning models
- Professional development for tools and modes of instruction and learning
- Specific staff job expansions to cover needs for health and social emotional well-being
- Intervention support for struggling students

FY 2021-22 Federal Funding Expenditures

Ouray School district will allocate funding from federal sources of ESSER II and ARP ESSER III in the following manner. Some of the funds were expended during the spring of 2021.

EXPENDITURES - ESSER II (2021-22)	
Digital Learning Supports (Prof/Tech)	\$9,000.00
Supplies - Sanitation	\$913.60
Day Custodian - Salary	\$9,094.00
Day Custodian - Benefits	\$2,032.51
TOTAL	\$21,040.11
EXPENDITURES - ESSER III (2021-22)	
Digital Learning Supports (Prof/Tech)	\$5,000.00
Supplies - Sanitation	\$44,200.76
Summer School 2021 - Salaries (9414)	\$7,500.00
Summer School - Benefits (9414)	\$1,676.25
Tutoring - Salaries (9414)	\$5,000.00
Tutoring - Benefits (9414)	\$1,117.50
Teacher PD - Salaries	\$13,699.00
Teacher PD - Benefits	\$3,061.73
Interventionist - Salary (9414)	\$20,060.00
Interventionist - Benefits (9414)	\$4,483.41
School SEL Counselor - Salary	\$18,394.80
School SEL Counselor - Benefits	\$4,111.24
School Nurse - Salary	\$9,676.80
School Nurse - Benefits	\$2,162.76

TOTAL	\$140,144.25
-------	--------------

Appendices

Appendix A: Primary Resources

- CDC: [Guidance for COVID-19 Prevention in K-12 Schools](#)
- CDC: [Guidance for Operating Early Care and Education/Child Care Programs](#)
- AAP: [COVID-19 Guidance for Safe Schools](#)
- CDPHE: [Practical Guide for Operationalizing CDC's School Guidance](#)
- CDPHE: [Cases and outbreaks in child care and schools](#)
- CDPHE: [Organized Sports](#)
- CDPHE: [Guidance for wearing masks](#)
- CDPHE: [Isolation and Quarantine | How to quarantine](#)
- CDE: [Best Practices Recommendations](#)
- CDE: [Best Practices for Temporary Remote Learning Options for the 2021-22 School Year](#)
- CDE: [Return to Learn following symptom screening](#)
- CDE: [At Home COVID-19 Symptom Screening Tool for Parents and Staff](#)
- CDE: [Addressing Symptoms at School](#)
- CDE: [ARP ESSER III fact sheet](#) (PDF)

Appendix B: Health Screening Guidance

- COVID Self Check:
<https://www.hopkinsmedicine.org/coronavirus/covid-19-self-checker.html>
- CDC: What to do if you are sick:
<https://www.cdc.gov/coronavirus/2019-ncov/if-you-are-sick/steps-when-sick.html>
- CDC: Screening K12 Students for Symptoms
<https://www.cdc.gov/coronavirus/2019-ncov/community/schools-childcare/symptom-screening.html#:~:text=CDC%20does%20not%20currently%20recommend,not%20attend%20school%20in%2Dperson.>