

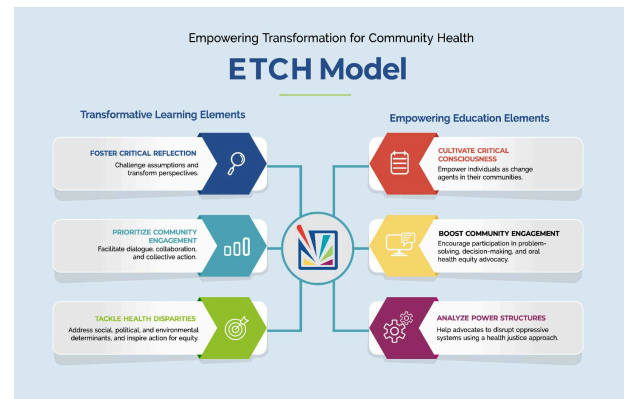
Welcome to the 2026-2027 AIDPH Dental Public Health Leadership Academy Application Guide

What is the AIDPH Dental Public Health Leadership Academy?	2
How will DPHLA Stimulate Your Personal & Professional Growth?	3
2026 DPHLA Curriculum and Leadership Development Approach	4
2026 - 2027 DPHLA Seminar Guide	5
2026 DPHLA Fellowship Elements	6
The Application and Selection Process	7
DPHLA Fellowship FAQs	8
• What should I expect from my DPHLA experience?	8
• Who is a good fit for this fellowship?	8
• How much does the program cost?	8
• How is the program delivered?	8
• What should I expect when I complete the fellowship?	8
Expectations of Participants	9



What is the AIDPH Dental Public Health Leadership Academy?

The American Institute of Dental Public Health is excited to open applications for the 2026 - 2027 cohort of the **Dental Public Health Leadership Academy (DPHLA)**, a 12-month virtual fellowship designed to elevate and empower early- to mid-career professionals who desire formal training in leadership principles and want to apply their skills in oral health and public health work. The DPHLA fellowship is structured to accommodate working professionals with a time commitment of approximately 3-5 hours per month, focused on developing personal and professional capacity for multi-directional leadership in public health settings. The DPHLA curriculum was designed using AIDPH's Empowering Transformation for Community Health (ETCH) Framework to ensure attention to adult learning principles and a health-justice mindset. This approach enables our education and leadership programming to foster both personal and professional growth, aligning with AIDPH's mission of empowering communities to eliminate health disparities and developing public health advocates.



Key features of the ETCH Model include:

- **Transformative Learning:** AIDPH supports fellows to critically reflect, challenge assumptions, and transform perspectives, all while addressing the social, political, and environmental determinants of health.
- **Empowering Education:** Participants engage in critical consciousness, enabling them to become agents of change and disrupt systems of oppression through a health justice approach.

DPHLA is a fellowship program offered through the **AIDPH Academy**. The AIDPH Academy is the hub of educational programming for AIDPH, serving as a dynamic platform for public health professionals seeking to enhance their knowledge and leadership skills. The Academy offers a spectrum of educational experiences ranging from webinars and workshops to comprehensive certificate programs and fellowships. By offering varied intensities and modalities of learning, the AIDPH Academy ensures that participants find the education and leadership training that best fits their needs, embodying our commitment to empowering transformation in community health.

After graduating from the DPHLA fellowship, attendees will be considered Fellows of the AIDPH Academy and receive ongoing, exclusive professional development opportunities from AIDPH.

How will DPHLA Stimulate Your Personal & Professional Growth?

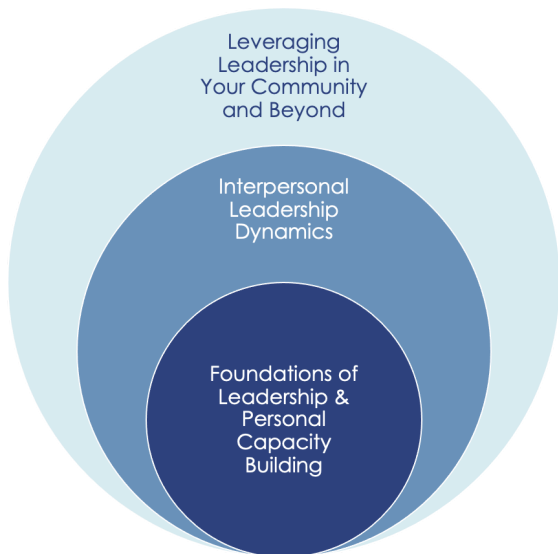
It is AIDPH's goal to create an experience that provides tangible benefits to both fellows and their affiliated organizations. AIDPH designs educational experiences to build the capacity of professionals and students and equip them for future leadership in the broader health workforce. The network that AIDPH creates through this fellowship and the relationships that continue afterward support future systems change, benefiting participants, organizations, and the health and well-being of vulnerable populations. Here's how DPHLA will catalyze your personal and professional growth:



- **Master Core Leadership Domains:** Dive deep into the essential leadership facets of dental public health, equipping yourself with the competencies to lead with confidence and expertise.
- **Practical Application of Learning:** Apply your newfound leadership and policy insights directly to organizational or community challenges, turning theory into impactful action.
- **Career Trajectory Clarity:** With guidance from diverse professional leaders, clarify and strengthen your career path, identifying opportunities and strategies for advancement.
- **Dynamic Networking and Community:** Join a vibrant cohort, fostering long-term professional relationships through networking opportunities designed to support and expand your career horizons.
- **Mentorship and Peer Support:** Engage in enriching peer-to-peer mentoring, and receive invaluable insights from DPHLA alumni, building a supportive network that encourages continuous growth.
- **Exclusive Access to National Leaders:** Connect with leading dental public health experts through exclusive events, expanding your professional network and understanding of the field.
- **Continuing Education Credits:** Earn CEUs that support your ongoing professional development and fulfill various credentialing requirements.
- **Alumni Community Involvement:** Upon completion, join the DPHLA alumni community, a facilitated network that offers ongoing support, resources, and collaboration opportunities.



2026 DPHLA Curriculum and Leadership Development Approach



Designed for oral health professionals to infuse public health leadership into their daily lives, the DPHLA curriculum is designed to be an iterative learning experience that builds on concepts and theories as fellows progress through the program. Fellows build their transformation project in alignment with program content, using monthly seminars and resources to strengthen their final project.

The first stage of the DPHLA curriculum focuses on **foundations of leadership and personal capacity building**. Fellows complete the Enneagram assessment, a tool for self-reflection and introspection that is referenced throughout the fellowship. During

this stage, the foundation for leadership development is laid through self-discovery and personal growth. Seminars focus on building personal skills and capacity for leadership that encourages oral health and dental public health application.

The second stage of the DPHLA curriculum focuses on **interpersonal leadership dynamics**, extending the concepts beyond personal development and moving into leadership with others. Drawing from skills like multi-directional leadership and conflict resolution, fellows are given the space to challenge themselves in building better relationships in their personal and professional lives.

The final stage of the DPHLA curriculum focuses on **leveraging leadership in your community and beyond**. In this stage, fellows take a macro-level look at leadership interaction, structures, and dynamics within communities and organizations. Fellows are encouraged to apply a systemic lens to leadership in public health and oral health, reaching personal long-term career goals, and planning for upward mobility in their career path.

Each cohort experiences a uniquely tailored curriculum experience based on pre-program assessments, mid-year evaluations, mentorship discussions, and feedback from previous years. AIDPH continuously upgrades this program to remain responsive within the evolving public health landscape and equip future leaders with the most relevant skills to meet the moment.

2026 - 2027 DPHLA Seminar Guide

Month	Topic	Competency
September 2026	DPHLA Orientation	
October 2026	Understanding Your Personal Leadership Style	
November 2026	Adaptive Leadership	
December 2026	Conflict Resolution and Interpersonal Management	
January 2027	Personal Communication Style + Developing a Personal Brand	
February 2027	People-Powered Projects	
March 2027	Identity, Power, and Belonging in Leadership Practice	
April 2027	Stakeholder Investment in Leadership	
May 2027	Beyond Policy: Developing Advocacy Approaches for Public Health Leaders	
June 2027	Amplifying Your Leadership from Vision into Action	
July 2027	Exploring Your Personal Career Pathway	  
August 2027	Celebrating Your Leadership Success	  

2026 DPHLA Fellowship Elements

The DPHLA fellowship is designed to ignite your potential, offering a multifaceted approach to learning that integrates theoretical knowledge with practical application, all within a supportive and engaging community of peers and leaders in dental public health.



Dynamic Monthly Seminars: DPHLA is designed as a 12-month fellowship featuring two-hour monthly seminars that delve deep into leadership and public health themes. Each session is tailored to the cohort's interests and needs, building progressively on prior learnings to ensure a cohesive educational journey. These seminars, typically held on the third Wednesday of each month, are interactive sessions where expert faculty lead didactic learning, experiential activities, and peer discussions.



Flash Mentoring Sessions: Supplement your experience with flash mentoring sessions featuring career-development guidance and insights from seasoned professionals in dental public health. These one-hour sessions provide a unique opportunity to tailor your learning to your career aspirations and typically occur every other month.



Faculty Expertise: All courses are taught by public health practitioners with advanced training (MPH or doctoral-level) who currently hold senior leadership positions within public health organizations. Their lived expertise ensures participants gain practical, relevant knowledge that reflects the realities of the public health sector.



Robust Networking Opportunities: Build lasting connections with a network of national leaders and peers. Exclusive virtual networking events with national leaders offer additional opportunities to expand your professional network. AIDPH offers exclusive networking opportunities and program discounts to fellows outside of DPHLA as part of our AIDPH Academy.



Transformation Project: Over the course of the 12-month DPHLA program, fellows will develop and complete a Transformation Project. These projects are a hands-on opportunity to apply the skills developed through seminars and mentoring in a real-world scenario, designed to support your daily work. DPHLA faculty will provide guidance throughout that process.



Peer Mentorship: Forge meaningful relationships through our peer mentorship component, the "Squad." At the beginning of the program, fellows will be set up in small groups - "Squads" engage together during seminars and are encouraged to connect outside of seminar time for mentorship and peer support. These relationships enhance your learning experience while strengthening the community within the DPHLA, fostering a supportive environment where leaders can grow together.



The Application and Selection Process

Interested individuals should [complete the fellowship application](#) by **Monday, July 13, 2026, at 5:00 pm PDT**. AIDPH staff and program faculty will assess each application to ensure that applicants are positioned well to participate and are likely to benefit from doing so. In reviewing each application, AIDPH will consider:

- Demonstrated self-awareness of one's leadership strengths and opportunities for growth.
- Desire to build leadership skills and abilities for application in oral health, public health, and/or other healthcare spaces.
- The overall thoughtfulness and thoroughness of answers to the application questions.
- The availability and willingness to commit the time necessary to complete the fellowship and participate fully.

Application guidance issued	June 2026
Applications due via this form	July 13, 2026
AIDPH sends notifications of acceptance decisions	July 2026
Participants sign written commitment to participate and pay tuition	July - August 2026
Monthly cohort calls begin	September 2026
Program concludes with individual transformation project presentations on last monthly seminar call	August 2027

DPHLA Fellowship FAQs

- **What should I expect from my DPHLA experience?**

Your DPHLA experience will be a comprehensive, engaging, and transformative journey through the lens of dental public health leadership. This fellowship requires approximately three to five hours a month and includes synchronous and asynchronous learning elements. Ultimately, you will gain the most value from the program when you fully engage and participate in all program elements.

- **Who is a good fit for this fellowship?**

This experience is best for individuals who are early- to mid-career professionals or professionals shifting into dental public health who want formal leadership training. While program faculty will support you to successfully complete this fellowship, participants who are self-motivated are the best fit for this program. **AIDPH encourages applicants from traditionally underrepresented and historically excluded communities.** Please reach out to programs@AIDPH.org with any questions about eligibility.

- **How much does the program cost?**

Program tuition is **\$2,000 for working professionals not currently enrolled in a full-time education program, and \$1,500 for students.** AIDPH encourages applicants to seek financial support from their institutions or employers, or from other external sources. AIDPH has prepared [this letter](#) describing the benefits of the fellowship to both schools and employers; please take the time to review these letters for personal use in exploring sponsorship from your organization.

- **How is the program delivered?**

This fellowship is tailored to a virtual environment, with seminars, peer networking, and mentorship occurring in a learning management system. Seminars and calls will be conducted via Zoom and all course materials, participation activities, event details, and cohort engagement will be accessible on a community-based learning platform that facilitates coursework and social interaction.

- **What should I expect when I complete the fellowship?**

DPHLA is designed to support your personal and professional growth. When you complete the fellowship, you'll receive a certificate acknowledging you are a fellow of the AIDPH Academy. You'll also have a transformation project ready for implementation. Many of our fellows have used their projects to support grant applications, work initiatives, conference presentations, and capstone projects.

Expectations of Participants

To ensure the value of this program to the full cohort of fellows, each individual taking part in the DPHLA will commit to the following fellowship policies:

- 1) Attend at least 10 of the 12 monthly seminars, which will typically be held on the first Wednesday of each month* (September 2026 – August 2027) from 12:00 to 2:00 pm ET. All fellows must attend the first seminar in September. *some seminars may be adjusted in accordance with national conferences or holidays depending on how the calendar falls*
- 2) Submit assignments, including pre-work for seminars, sections of the program's individual transformation project plan, and other requests for information related to the program by the deadlines provided. AIDPH will grant extensions when communicated at least 48 hours in advance.
- 3) Actively engage in the program's shared online workspace.
- 4) Maintain confidentiality related to other fellows' experiences, organizations, projects, and other information shared during the program, except when provided with explicit permission to do so.
- 5) Comply with program norms and expectations as set by program faculty and fellow participants.

Individuals who do not comply with program expectations jeopardize their ability to earn a certificate and be included as a fellow of the AIDPH Academy.

Statement of Accessibility

AIDPH is committed to ensuring accessibility and inclusion in our programming. As such, we will work with each fellow to determine what, if any, accessibility accommodations are needed to fully participate in the program and coordinate those needs as possible during the program.

Please reach out to programs@AIDPH.org with any questions about the application, selection process, or program.