



# F9 Pro Ventilation Instrument Screen

## --User Instruction Manual



## Product introduction

Thank you very much for choosing our F9 Pro instrument screen product.

The F9 Pro instrument screen uses an 8.9-inch ultra-thin automotive-grade high-definition screen and a Linux operating system, which is stable and smooth. Exclusively developed with an air outlet design, it is more comfortable without blocking the wind.

It is matched with a variety of UI styles, including minimalist style, original style and classic style.

It synchronizes various information of the original car in real time, including speed, gear position, power, tire pressure and other information, providing you with a more comfortable and satisfying driving experience.

## Product configuration

Touch screen: 2.5D full lamination anti-fingerprint technology

Interface support: Type\_c interface, data transmission, software upgrade

RAM: 256M

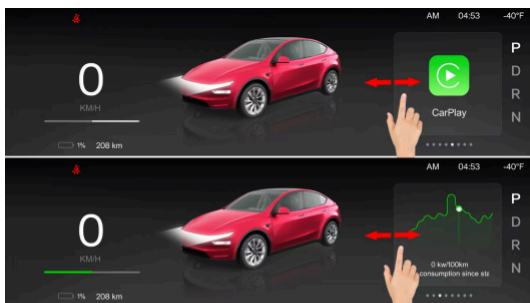
ROM: 8G

Input voltage: DC10V-16V

Working current: 350MA

# Control Methods

## 1.Touch screen



Swipe and tap to control on-screen functions

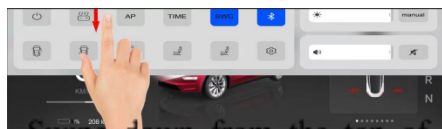
## Right Steering wheel Button Control



Functions of the right button on the steering wheel:

- Left dial: Return/Exit
- Right dial: Enter/Confirm
- Scroll up and down: Switch menu

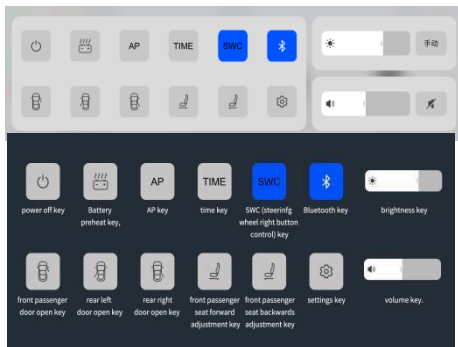
## Shortcut key



Swipe down from the top of the screen to enter the shortcut

page

**Shortcut key functions**



## Front Camera (option)

- Turn on the front camera function:  
settings--display--front camera
- 2.To enter the front-view camera when it is not started: press and hold the right button of the steering wheel to the right for 3 seconds.





# Carplay/Android Auto

## Carplay



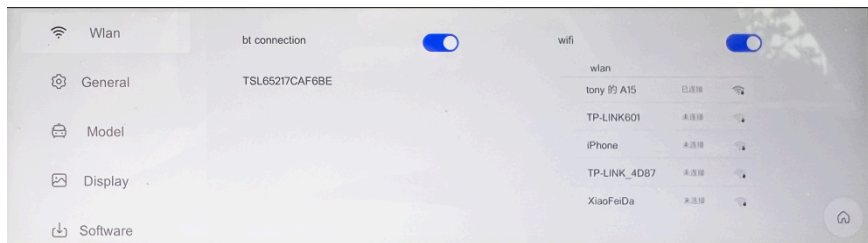
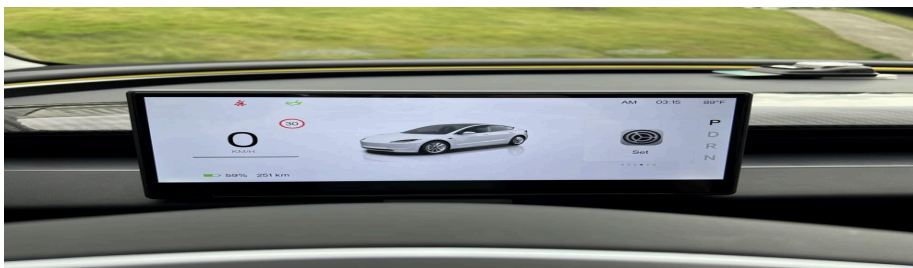
- 1, Click the Carplay icon on the main interface menu to enter the Carplay.
- 2, Turn on the smartphone's Bluetooth.
3. Find the F9 Pro screen's Bluetooth device "TSL\*\*\*\*\*" and connect it.

## Android Auto

- 1, Click the Android Auto icon on the main interface menu to enter the Android Auto .
- 2, Turn on the smartphone's Bluetooth.
3. Find the F9 Pro screen's Bluetooth device "TSL\*\*\*\*\*" and connect it.



## Settings-Wlan



Enter the settings interface, click Wlan option, turn on/off the Bluetooth and WIFI.

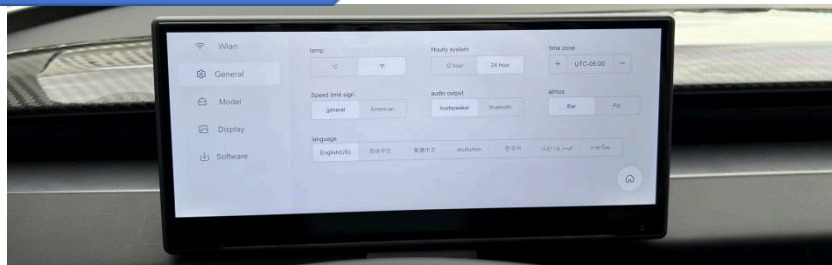
Carplay/ Android Auto is Bluetooth connect.

(connect the F9 Pro screen's Bluetooth "TSL65217CAF6BE" with the smartphone)

Airplay/ Miracast is Wi-Fi connections

(connect the smartphone's hotspot with the F9 Pro screen)

# Settings-General



Click "General", on the "General" interface to set more functions.

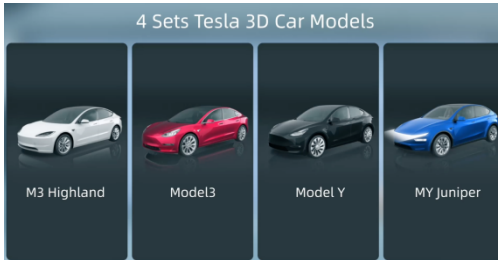
- ✧ Temperature unit switching (F/C)
- ✧ Time system switching (12Hours/24hours)
- ✧ Time zone setting (UTC)
- ✧ Speed limit sign setting. (General/ US)
- ✧ Audio output .(loudspeaker-F9 Pro's Speaker, Bluetooth- Tesla Speaker)

**Bluetooth operation method:**

- 1.Set the Audio output to "Bluetooth" on the settings interface.
- 2.Connect the smartphone's Bluetooth with Tesla's Screen when use the Carplay/Android Auto, Airplay/Miracast/HUAWEI Hicar functions.

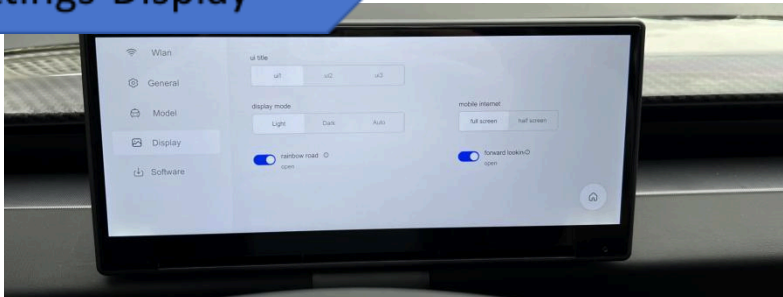
- ✧ Pressure unit switching, (Bar/Psi)
- ✧ Language setting (English, Chinese Simplified, Chinese Traditional, German, Korean, Arabic, Latin)

## Settings-Model



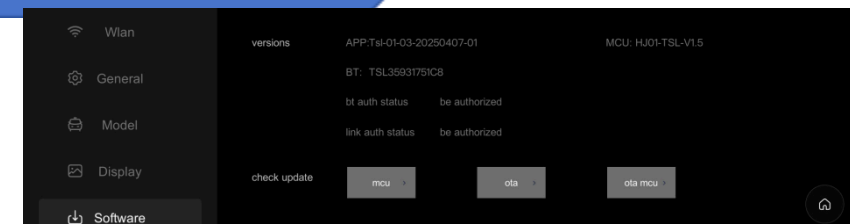
- Enter the Settings interface
- Click “Model” option.
- Choose the car model and the model’s color.
- return to the main interface.

## Settings-Display



1. Enter the Settings interface
2. Click “display” option.
3. Choose the UI themes, day/night model and Auto model (follow the Tesla system), rainbow road turn on/off, full screen/half screen switch front camera turn on/off
4. return to the main interface.

# Settings-Software



mcu >

Canbus software update via USB driver, Operation method:

download the software into the USB driver's root directory, insert the USB driver into our F9 Pro screen's USB port then click this mcu button.

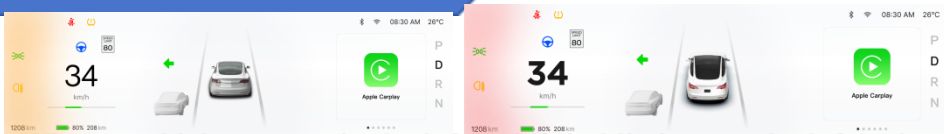
ota >

OTA the Canbus software via WiFi, Operation method: connect the F9 Pro screen's WiFi with the smartphone's hotspot, then click this "OTA" button to update to the newest version.

ota mcu >

OTA the APP software via WiFi  
Operation method:  
connect the F9 Pro screen's WiFi with the smartphone's hotspot, then click this "ota mcu" button to update to the newest version.

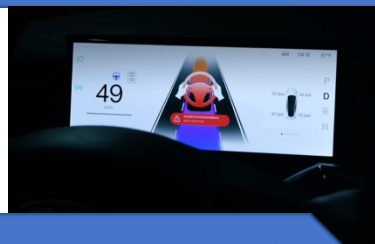
## Blind Spot Monitoring



When a vehicle appears in the left and right blind spots, the left and right sides of the instrument will flash yellow light

When a vehicle appears within the blind spot, turn on the turn signal, and the left and right sides of the instrument will flash red light as a warning.

## Hands-off Reminder



Real-time synchronization of FSD steering wheel hands-off reminder

## Rainbow Road



Real-time synchronization of original vehicle information - Rainbow Road (can be turned off, in the settings page - Display - Rainbow Road), vehicle speed, lights, gear, tire pressure, battery, etc.

## Warranty

We provide a one-year warranty. During the warranty period, if the product quality problem is not caused by human factors, the damaged parts or the entire equipment can be replaced free of charge after judgment by our engineers; if the problem is caused by human factors, you need to purchase it at your own expense.

### Warranty Card

Product Name:		Purchased Date:	
Buyer Name:		Order Number:	
TEL:		E-mail:	
Fault Problem Description:			
Judgment Result:			
Maintain Date:		Number of repairs:	
Customer Comment:			



# F9 Pro Ventilation Instrument Screen --Installation Instruction Manual





## Parts List

1. screen body
2. power cord
- 3.pry tool
- 4.USB Driver
5. front camera
6. tape
- 7.threading tool

## Disclaimer and Notes



## Warnings and Disclaimers

**Important Tips:** Thank you for your support in purchasing our products. In order to protect the legitimate rights and interests of users, please read carefully and operate the product in accordance with the precautions for use, product installation instructions and user manual before using this product.

### Precautions for use

1. Before installation, please check whether the product list is complete and undamaged.
2. The installation instructions may be slightly different from the actual operation. If there are any differences, please contact us according to the actual situation.
3. Warning: Do not disassemble any parts by yourself. Any improper operation is not covered by the warranty.
4. Before installing the product, please watch the installation video and instructions.
5. Check whether the installed product is operating normally.

# Front Camera Installation Instructions (option)



1. Open the front trunk and remove the 4 fixing nuts of the front trunk storage trim using a No. 10 socket tool



3. Remove the front button trim and pull out the front button switch.



2. Removing the air conditioning filter



4. Remove the front trunk storage box and take it out of the vehicle. (Put the removed trim panel in the front trunk storage box for easy storage)

# Front Camera Installation Instructions (option)



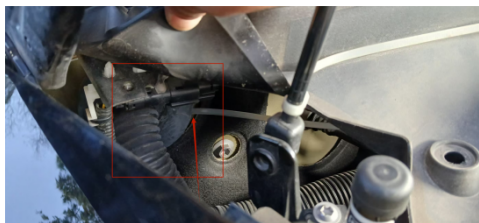
5. Wrap the camera extension cable and threading tool with tape and pass the camera harness through the lower grille into the cabin.



6. through threading tool from the front trunk's strut button.



7. Tear off the 3M adhesive post of the camera, clean the bumper and stick it on, or use the delivered screws to fix the camera



8. Insert the threading tool through the side of the rubber ring into the front passenger seat.

# F9 Pro Dashboard Screen Installation Instructions

## IINInstructionsilnsinstructions



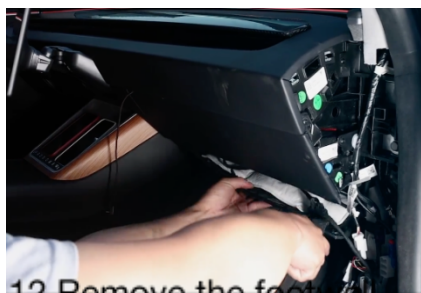
9. Remove the front passenger door rubber (left and right side are same) strip



10. remove the clip on the passenger door trim panel



11. Remove the passenger rectangular trim panel



12. Remove the footwell light panel under the passenger seat and disconnect the plug

# F9 Pro Dashboard Screen Installation Instructions

## Instructions



13. Pull out the strap from the passenger side (for front camera installation step 8 the



Use a prying tool to pry open the left and right sides of the dashboard, and take it out of the car.



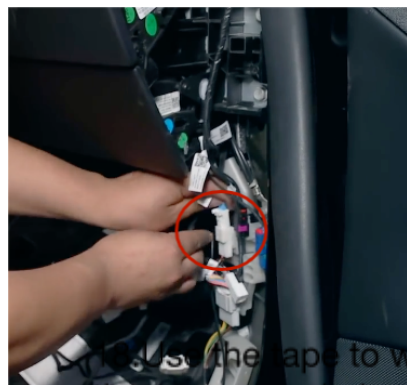
canbus plug with original vehicle's A-pillar power connection



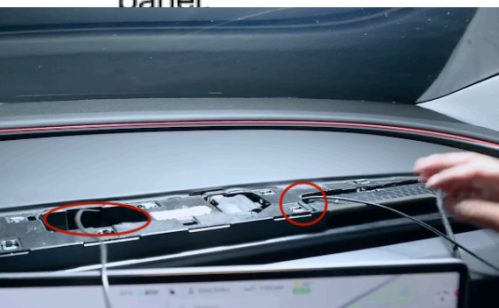
16. Plug our screen AVID's 12V male plug with original vehicle's A-pillar 12V Female plug



# Instructions

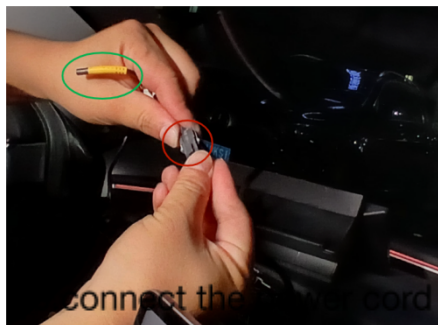


Use the tape to wrap the power cord plug with original vehicle's extension wire and camera A-pillar 12V male plug. Use the threading tool and pass the threading tool through the hole of the triangle into the instrument panel.



Through the instrument position steering wheel

# Instructions



20. Connect the power cord plug with our screen's power plug. (the yellow plug is for front camera's)



21. Run the cable well, and align the air outlet of our screen with the air outlet of the original car.



22. Insert the instrument into the instrument panel.



23. Test whether the product is working properly. If there is no problem, restore the original car dashboard trim and other parts.