

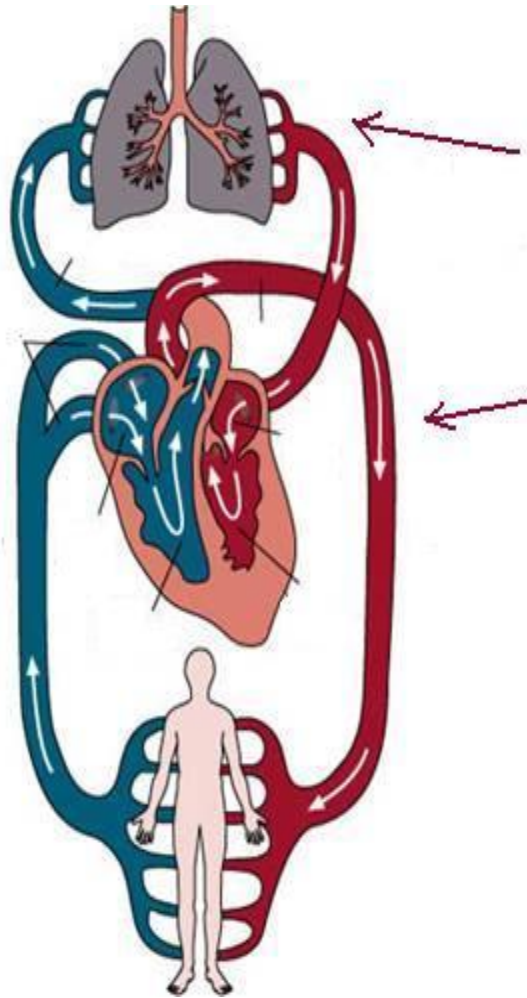
Part	Primary Job (include supporting body parts)	Where is the blood coming from?	Where is the blood going?	At this point, is blood <b>oxygen-rich</b> or <b>oxygen-poor</b> ?
Heart				
Atrium Right				
Atrium Left				
Ventricle Right				
Ventricle Left				
Arteries				
Veins				
Red Blood Cells				
Capillaries				

Key Questions:

- How does the circulatory system work with the respiratory system?
  
- \_\_\_\_\_ and \_\_\_\_\_ are types of blood vessels. How does their shape (form) help with their job (function)?

Track blood and what it carries through the circulatory system

Label Parts  
using the  
vocabulary list  
on the previous  
page (add in  
diagrams as  
necessary)



Describe the path of a liter of blood as it leaves the heart until it returns to the heart the second time.