

**TITLE – NOT MORE THAN 12 TIMES NEW ROMAN FONT SIZE 14, BOLD,
CENTRED, UPPERCASE**

Author's Name, Times New Roman, Font Size 12, Bold, Centered

Affiliation (font size 11, centred)

(e.g. Department of English Education, Faculty of Teacher Training and Education, University of
Singaperbangsa Karawang)

Author(s) email, font size 11, centred, italics, single spacing

Abstract

The abstract should be written in one paragraph and between 150-225 words. Times New Roman, font size 11, single spacing. Follow the following pattern: General statement about the importance of the topic, gap in literature or discrepancies between theories and practices, purpose of study, method, main findings, and conclusion.

Keywords: *Keyword one, keyword two, keyword three, keyword four, keyword five* – Times New Roman, 11, Italic, single spacing (please provide 3-5 keywords)

MAIN HEADINGS – FONT SIZE 12, BOLD, CAPITALISED

Subheadings – Font size 12, Bold, Sentence case

Subheadings – Font size 12, Bold, , Sentence case

INTRODUCTION (Review of literature can be merged into Introduction)

The article should be between 10-13 pages (between 5000-6000 words), single-spaced, 12 point Times New Roman font, excluding references and appendices. Use no indent for the first paragraphs and do not leave a space between paragraphs.

The following paragraphs is indented first line 0.75cm.

METHOD

(Covers: Respondents, Instruments, Procedures, & Data analysis)

RESULTS AND DISCUSSION

Subheading 1 (research question 1)

Subheading

Subheading 2 (research question 2)

Subheading

Subheading 3 (research question 3)

Subheading

Etc.

CONCLUSION

REFERENCES

1

(Times New Roman, 12, centered)

Top margin : 2.54 cm

Bottom margin : 2.54 cm

Right margin : 2.54 cm

margin : 2.54 cm

Left

CITATION:

Use APA Citation 6th edition for in-text citations and the reference list. For in-text citations, use the author's name and year (Author, 1980), and if there are direct quotes, then provide the page number (Author, 2010, p. 24). If you are citing more than one reference, put them in alphabetical order (Alpha, 2008; Beta, 1999). For a reference with up to five authors, use all the names in the first instance (Author1, Author2, Author3, Author4, & Author5, 2007), and then use the first author *et al.* subsequently (Author1 *et al.*, 2007). Do not use footnotes.

FIGURE AND TABLES

Place titles of Figures after the figures and Tables preceding them using Times New Roman font size 11 for the title.

Table 1. *Number of articles published in ERJEE from 2010 to 2016*

Year	No	The font of the table is Times New Roman (font size 10)
2012	24	
2013	23	
2014	24	
2015	25	
2016	25	
Total	121	

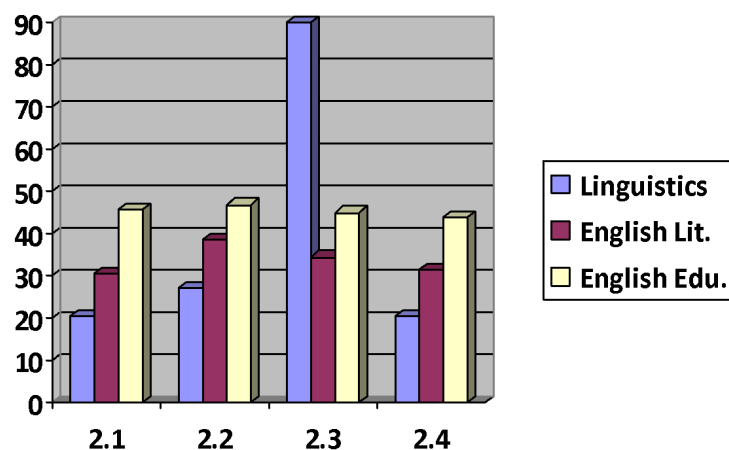


Figure 1. *Number of subtheme published in JEED*

2 (Times New Roman, 12, centered)			
Top margin		: 2.54 cm	
	Bottom margin		: 2.54 cm
Right margin		: 2.54 cm	Left
	margin		: 2.54 cm

ACKNOWLEDGEMENTS

Indicate sources of funding or help received in carrying out your study and/or preparing the manuscript if any before the **references**.

REFERENCES (Examples)

- Deane, P., Odendahl, N., Quinlan, T., Flowles, M., Welsh, C., & Tatum, J. B. (2008). *Cognitive models of writing: Writing proficiency as a complex integrated skill*. Retrieved February 9, 2014, from <https://www.ets.org/Media/Research/pdf/RR-08-55.pdf>.
- McCutchen, D., Teske, P., & Bankston, C. (2008). Writing and cognition: Implications of the cognitive architecture for learning to write and writing to learn. In C. Bazerman (Eds.), *Handbook of writing research* (pp. 451-470). Hillsdale, NJ: Lawrence Erlbaum.
- Big drop in students studying O-level literature. (1997, August 16). *The Straits Times*, p. 3.
- Creswell, J. W. (2012). *Educational research (4th ed.)*. Boston, MA: Pearson Education, Inc.
- Choo, S. (2004). Investigating Ideology in the Literature curriculum in Singapore. Unpublished master's thesis. Department of English Language and Literature: National University of Singapore.
- Flower, L., & Hayes, J. R. (2008). A cognitive process theory of writing. *College Composition and Communication*, 32(4), 365-387.
- Curriculum Planning and Development Division. (2007). *Literature in English, teaching syllabus*. Ministry of Education: Singapore.