



## The Curriculum Group meeting

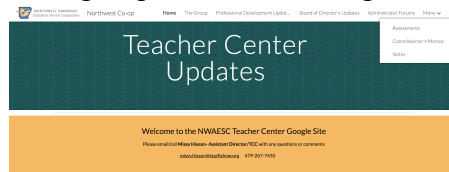
10-6-22

12:00-2:00 pm

**Room 17**

**NWAESC Teacher Center Google Site: [CLICK HERE](#)**

{archived site for various groups/info concerning curriculum/PD/other info}



**Lunch at 11:30 (\$5/donation)**

**Meeting begins at 12:00**

Time	Essential Topics	Notes/Resources
12:00-12:05	<ul style="list-style-type: none"><li>Welcome &amp; Overview &amp; Introductions</li></ul>	<ul style="list-style-type: none"><li>Missy</li></ul>
12:05-12:45	<ul style="list-style-type: none"><li>Introduction of NWAESC Guest &amp; Specialists</li><li>Guest Speaker: Hope Worsham ESSER Program Director</li><li>Guest Speaker: Ross White CTE Director</li></ul>	<ul style="list-style-type: none"><li>Missy</li></ul> <p><a href="#">THRIVE AR SlideDeck</a></p> <p>ACT WorkKeys <a href="#">SlideDeck</a></p>
	<b>Announcements, Networking, Questions, Topics of Interest or Updates</b>	
12:45-1:50	<b>Discussions:</b> <ul style="list-style-type: none"><li>Increase in hospitality fees to \$18; electronic payments onsite within the next week.</li><li><b>Public School Accountability</b><ul style="list-style-type: none"><li>DESE suggests focus on achievement/growth not SQSS for letter grades<ul style="list-style-type: none"><li>DESE suggesting be proactive by working on communication plans to be ready to address learning loss and letter grade prior to release.</li></ul></li><li>2022-2023 Public School Accountability Timeline Document <a href="#">HERE</a></li></ul></li></ul>	<ul style="list-style-type: none"><li>Missy</li></ul>

**Missy Hixson, Ed.D.**

Assistant Director/Teacher Center Coordinator

[missy.hixson@starfishnw.org](mailto:missy.hixson@starfishnw.org)

	<ul style="list-style-type: none"> <li>○ Public viewing of the ESSA School Index Reports will be open in <a href="#">My School Info</a> on October 14, 2022.</li> <li>○ This is the <a href="#">report card scale scores</a>.</li> <li>○ <a href="#">LEA insights</a> has all the info by school.</li> </ul> <p>I've been asked to pull the charts off from an area Superintendent until these are public. (after November)</p> <ul style="list-style-type: none"> <li>● Farmington Charts <a href="#">HERE</a></li> <li>● West Fork Charts <a href="#">HERE</a></li> <li>● <a href="#">LS-23-019</a> Coding Science of Reading Awareness and Proficiency in eFinance (2023-2024) There is 1 code for awareness and 5 codes for proficiency to be used in eFinance for coding Science of Reading. For a detailed chart on which code to use, <a href="#">click here</a>. Teachers should be coded by the beginning of the 23-24 school year. Data is collected in Cycle 2 and Cycle 6 reports. If a teacher has not yet completed their pathway, leave the field blank.</li> <li>● <a href="#">LS-23-020</a> Family Mental Health Night</li> </ul> <p><b><u>Training Opportunities:</u></b></p> <ul style="list-style-type: none"> <li>● <a href="#">October PD overview</a></li> <li>● <a href="#">November PD overview</a></li> <li>● School Family and Community Engagement Facilitator/Coordinator <a href="#">October 17</a></li> <li>● Visual Supports &amp; Classroom Routines <a href="#">October 28 (am)</a></li> <li>● Literacy Skills for Students with Complex Learning Needs: Oral Language <a href="#">October 28 (pm)</a></li> <li>● DESE-Crisis Response Team - Basic Level (NOVA) <a href="#">November 2-4</a></li> <li>● CPI:Advanced Physical Skills Blended Certification Training November 8-11</li> </ul> <p><b><a href="#">Register/Pay HERE</a></b></p>	<p><i>Please share in your districts!</i></p>
--	---	---

**Missy Hixson, Ed.D.**

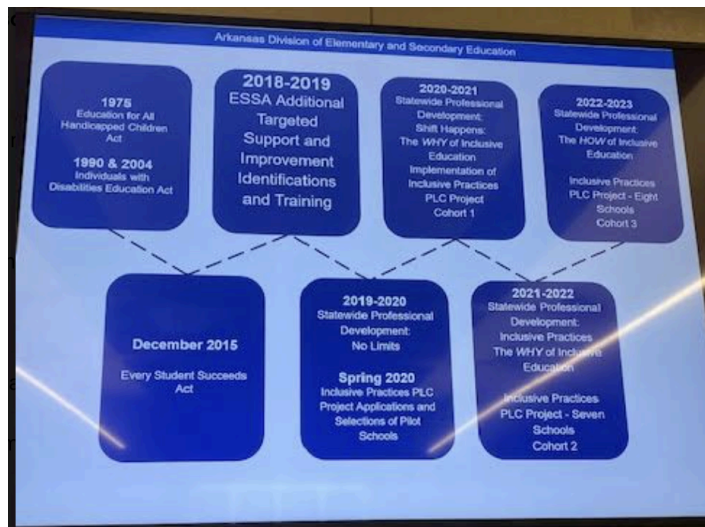
Assistant Director/Teacher Center Coordinator

[missy.hixson@starfishnw.org](mailto:missy.hixson@starfishnw.org)

	<ul style="list-style-type: none"> <li>• <a href="#">Arkansas ASCD Fall Drive-In Conference</a> is in Benton on 10/24 re. Trauma Informed Schools w/ guests from <a href="#">UAMS</a>; great for nurses, counselors, admin., etc. <a href="#">Registration Link</a> for the conference. New <a href="#">District Membership Model</a></li> </ul>	
	<b>Closure/Adjournment:</b>	
1:50-2:00	<ul style="list-style-type: none"> <li>• Reflections</li> <li>• Closure</li> </ul>	

### Inclusive Practices:

- Inclusive Practices Website [HERE](#)

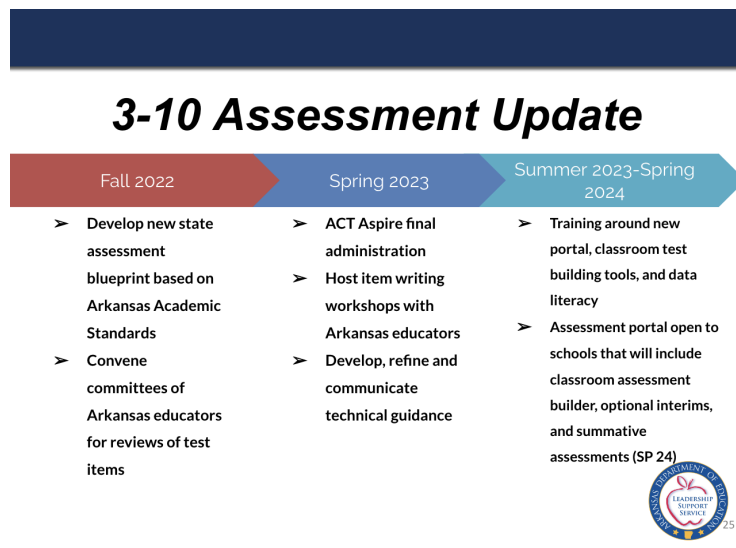


Timeline: 2021-2030 (Alternative View)								
Special Education services should be determined on an individual student basis to include frequency, duration, and location of such services.								
2021-2022	2022-2023	2023-2024	2024-2025	2025-2026	2026-2027	2027-2028	2028-2029	2029-2030
Building Awareness	Planning Year	6 <sup>th</sup> and lower	7 <sup>th</sup> and lower	8 <sup>th</sup> and lower	In order to earn credits on the regular pathway	In order to earn credits on the regular pathway	In order to earn credits on the regular pathway	In order to earn credits on the regular pathway
Statewide trainings	Schools are asked to make plans for moving forward. Any needed training should be provided.	It is recommended that students receive core instruction in general education courses with the appropriate supplementary aids, services, and supports to prepare them for fulfilling the regular diploma requirements for graduation. Programming decisions are determined by the IEP team.			9 <sup>th</sup> graders must have licensed content teachers	9 <sup>th</sup> and 10 <sup>th</sup> graders must have licensed content teachers	9 <sup>th</sup> , 10 <sup>th</sup> , and 11 <sup>th</sup> graders must have licensed content teachers	All high school students must have licensed content teachers
*Students with significant cognitive disabilities may have core instruction in general education classes or in special classes taught by teachers licensed in special education. In high school, these students would be working toward graduating via the Alternate Pathway to Graduation.								
Green indicates students working towards fulfilling the regular diploma requirements for graduation.								

**Missy Hixson, Ed.D.**  
 Assistant Director/Teacher Center Coordinator  
[missy.hixson@starfishnw.org](mailto:missy.hixson@starfishnw.org)

## New Assessment updates:

Form if interested in participating: <https://forms.gle/yguGGbUhrKfJrQ3W9>



## Curriculum Dates to register:

Nov. 3- [481968](#) Scoot the Bookmobile-Andrea Ward West Fork {Scoot Tiger}  
 Dec. 1-[481969](#) Rogers Pre-AP & Dr. Tina Moore (STEM)  
 Jan. 5 [481996](#) Huntsville-Watson Primary R.I.S.E. Award & DESE Assessment Team Zoom  
 Feb. 2- [481997](#) Farmington R.I.S.E. Award  
 March 2- [482001](#) Bentonville Standards Based Grading (Eric Hipp) & R.I.S.E. Award Ashley Williams  
 April 6- [482002](#) Rogers Pre-AP follow-up  
 May 4-[482004](#) Dr. Kiffany Pride (DESE) & Jeffrey Davidson-SS Standards

## Federal Programs Dates to register:

Nov 3: [486072](#)  
 Dec 1 : [486074](#)  
 Jan 5 : [486076](#)  
 Feb 2 : [486077](#)  
 Mar 2 : [486079](#)  
 Apr 6 : [486080](#)

## Content Specialists Updates

**Missy Hixson, Ed.D.**

Assistant Director/Teacher Center Coordinator

[missy.hixson@starfishnw.org](mailto:missy.hixson@starfishnw.org)

## **Literacy**

### **K-6 Literacy**

Jill Ellis and Meredith Nardone are available to visit schools to observe and support teachers in their science of reading implementation in the classroom. They are available to support administrators and instructional leaders with classroom walkthroughs and to practice using the “Look For” documents as well as the Smart Card for SOR evaluations. Meredith and Jill are **not** the evaluators in this process, but they can offer insight into what instructional practices should be observed based on the components of the documents. To schedule support, please contact Jill Ellis ([jill.ellis@starfishnw.org](mailto:jill.ellis@starfishnw.org)) or Meredith Nardone ([meredith.nardone@starfishwn.org](mailto:meredith.nardone@starfishwn.org)).

### **K-5 Literacy Council**

K-5 literacy facilitators and curriculum coordinators will meet and collaborate on content and support needs. Participants will also engage in article and book studies. The council will meet quarterly in person at the NWAESC. If you are a curriculum coordinator or literacy facilitator for K-5 and would like to be added to the literacy council contact list, please contact Meredith Nardone ([meredith.nardone@starfishwn.org](mailto:meredith.nardone@starfishwn.org)).

#### **K-5 Literacy Council Meeting Dates (in person, no Zoom option)**

October 20 - [485622](tel:485622)

December 13 - [485626](tel:485626)

February 9 - [485629](tel:485629)

April 19 - [485631](tel:485631)

### **Adolescent Literacy Council**

The Adolescent Literacy Council of Northwest Arkansas includes administrators, facilitators, and teachers who are passionate about adolescent literacy. If your district is interested in participating, please register [here](#) for the meeting on December 2, 2022, from 1:00-3:00 PM. For further information, please contact Dr. Judy Fields ([judy.fields@starfishnw.org](mailto:judy.fields@starfishnw.org)).

### **7-12 Literacy**

Dr. Angie Greiner and Dr. Judy Fields are available to assist districts in implementing the Science of Reading in the secondary classroom including but not limited to assessment, intervention, and core instruction. To schedule support, please contact Dr. Angie Greiner ([angie.greiner@starfishnw.org](mailto:angie.greiner@starfishnw.org)) or Dr. Judy Fields ([judy.fields@starfishnw.org](mailto:judy.fields@starfishnw.org)).

### **K-12 Dyslexia**

Judy Fields and Meredith Nardone are available to support districts with their dyslexia intervention programs and assessment processes. If you have any questions, please contact Judy Fields ([judy.fields@starfishnw.org](mailto:judy.fields@starfishnw.org)) or Meredith Nardone ([meredith.nardone@starfishwn.org](mailto:meredith.nardone@starfishwn.org)).

### **K-12 Literacy Newsletter**

***Missy Hixson, Ed.D.***

Assistant Director/Teacher Center Coordinator

[missy.hixson@starfishnw.org](mailto:missy.hixson@starfishnw.org)

The [Fall Newsletter](#) is now available online. This edition features online learning tools, R.I.S.E. instructional activities and professional learning both through the Northwest Arkansas Educational Servicing Center and other organizations online.

### **R.I.S.E. Trainings Fall 2022**

#### **On-site at NWAESC**

<b>K-2 R.I.S.E. Academy</b>			
<b>Day 3</b>	<b>10-26-22</b>	<b>#<a href="#">481394</a></b>	Phonics
<b>Day 4</b>	<b>10-27-22</b>	<b>#<a href="#">481396</a></b>	Fluency
<b>Day 5</b>	<b>11-30-22</b>	<b>#<a href="#">481397</a></b>	Oral Language, Vocabulary & Morphology
<b>Day 6</b>	<b>12-01-22</b>	<b>#<a href="#">481399</a></b>	Comprehension

<b>3-6 R.I.S.E. Academy</b>			
<b>Day 3</b>	<b>10-24-22</b>	<b>#<a href="#">481829</a></b>	Morphology & Etymology
<b>Day 4</b>	<b>10-25-22</b>	<b>#<a href="#">481831</a></b>	Vocabulary: Word Level Comprehension
<b>Day 5</b>	<b>11-14-22</b>	<b>#<a href="#">481834</a></b>	Comprehension
<b>Day 6</b>	<b>11-15-22</b>	<b>#<a href="#">481835</a></b>	Putting It All Together

<b>Science of Reading Stand Alone Days</b>			
<b>October 7th</b>	<b># <a href="#">485154</a></b>	Decoding (Zoom)	
<b>November 9th</b>	<b># <a href="#">489231</a></b>	Content Area Reading Strategies (Face-to-Face)	

<b>Literacy Professional Development</b>			
<b>November 9th</b>	<b># <a href="#">485614</a></b>	Writing in the K-2 Classroom	
<b>December 8th</b>	<b># <a href="#">485616</a></b>	Writing in the 3-6 Classroom	

### **Library Media Specialists**

Dr. Angie Greiner will continue supporting library media specialists through forums scheduled at the Co-op and in school libraries. This year elementary librarians have their own forum to share ideas, problem solve and create programs that promote reading in their buildings. The back to school forums were a success and the winter forums have been scheduled for the following dates:

***Missy Hixson, Ed.D.***

Assistant Director/Teacher Center Coordinator

[missy.hixson@starfishnw.org](mailto:missy.hixson@starfishnw.org)

**Secondary Library Media Specialist Forum** is December 8th @ Bentonville High School from 9:00 - 11:30 Session # [487766](#)

**Elementary Library Media Specialist Forum** is Jan. 19th @ Westside Elementary in Rogers from 9:00 - 11:30 Session # [487769](#)

Forums meet three times a year. Additional dates TBA.

## **Math**

### **Training for Math Coaches**

- AR Math QuEST is growing in our region. To support this growth, we will be offering QuEST Year 1: Introduction to Ambitious Teaching and QuEST Year 2: Going Deeper with Ambitious Teaching to instructional coaches and other math leaders so that they can then provide support to their teachers.
- AR Math QuEST Year 1: Introduction to Ambitious Teaching
  - AR Math QuEST (Quantitative Essentials for Students and Teachers) is a journey for ambitious teaching that promotes equity and engagement of all students in meaningful mathematics learning experiences of reasoning and problem solving. AR Math QuEST is a state-initiated professional development opportunity for exemplary teaching and learning based on NCTM's Effective Mathematics Teaching Practices and the Standards for Mathematical Practice. Participants will receive the book Taking Action: Implementing Effective Mathematics Teaching Practices for grade band K-5, 6-8, or 9-12.
    - Spring Date TBD
- Coaching Ambitious Teaching
  - This course has a prerequisite, AR Math QuEST: Introduction to Ambitious Teaching. Are you supporting teachers to engage students in meaningful mathematics learning experiences of reasoning and problem solving? Are you interested in a process and tools for mathematics coaching of exemplary teaching and learning based on the NCTM's Effective Mathematics Teaching Practices and the Standards for Mathematical Practice? Join the AR Math QuEST cadre of instructional facilitators on the journey to coach ambitious teaching. Days two and three will focus on utilizing coaching tools and providing meaningful, actionable feedback as an instructional facilitator. Participants will receive the book Everything You Need for Mathematics Coaching by McGatha, Bay-Williams, McCord Kobett, and Wray.
  - Register Here:
    - Day 1: September 6th
    - [Days 2 and 3: January 23rd and 24th](#)
- AR Math QuEST Year 2: Going Deeper with Ambitious Teaching
  - This session continues the AR Math QuEST (Quantitative Essentials for Students and Teachers) journey for ambitious teaching that promotes equity and engagement of all students in meaningful mathematics learning experiences of reasoning and problem solving. Participants will further explore and deepen their understanding of NCTM's Effective Mathematics Teaching Practices and the Standards for Mathematical Practice as well as engage with the 5 Practices for Orchestrating Productive Mathematical Discussions. Tess: 1a, 1b, 1c, 1e, 1f, 2a, 2b, 3a, 3b, 3c, 3d, 3e, 4a, 4e
  - The prerequisite for this course is AR Math QuEST Year 1.
    - September 12th and 13th

### **NWA Math Forum**

***Missy Hixson, Ed.D.***

Assistant Director/Teacher Center Coordinator

[missy.hixson@starfishnw.org](mailto:missy.hixson@starfishnw.org)



- The Northwest Arkansas Math Forum - A process of collective inquiry - is an open invitation to join a collaborative group of passionate mathematics educators dedicated to finding answers - to the most difficult questions - in mathematics education today.
- In these sessions we will focus our collective inquiry on digging deeper into ambitious teaching for mathematics (Effective Mathematics Teaching Practices and Standards for Mathematical Practice), coaching ambitious teaching, and other hot topic issues generated from the collective group.
  - [October 14 - Session ID 487103](#)
  - [December 15 - Session ID 487107](#)
  - [February 10 - Session ID 487110](#)
  - [May 12 - Session ID 487112](#)

We will continue to support schools through site visits as they work to understand the Arkansas Mathematics Standards and make connections to professional development opportunities such as:

- AR Math QuEST
- Illustrative Mathematics (IM)
- Professional Learning Communities (PLC)
- Response to Intervention (RTI)
- Collaborative Common Assessments
- Blended Learning Support

### **Science/STEM**

- The Co-op is partnering with the Amazeum to host Family STEAM Nights across the region. This partnership includes site-based PD before the event to prepare teachers for it, assistance organizing it and support the night of the event. Contact Jenny for more info: [jenny.gammill@starfishnw.org](mailto:jenny.gammill@starfishnw.org)
- We are implementing coaching cycles in science, grades 3-12, this school year. If your district would like more information about what this can look like with your teachers, please reach out to Carly: [carly.geanolous@starfishnw.org](mailto:carly.geanolous@starfishnw.org).

### **G/T**

- NWA ESC sponsored chess tournament will be held at DTSOI on Saturday, Oct. 8th
- On Saturday, Oct. 22nd, NWAESC is hosting a Pre-ACT practice test opportunity at the co-op for \$20. It's first come, first serve for registration - - open to all students.

***Missy Hixson, Ed.D.***

Assistant Director/Teacher Center Coordinator

[missy.hixson@starfishnw.org](mailto:missy.hixson@starfishnw.org)



**NW Arkansas Co-op**  
Pilot Program for Gifted & Talented 7-10<sup>th</sup> graders



- Who:** Interested 7<sup>th</sup>-10<sup>th</sup> graders
- Where:** NWA Education Service Cooperative (NWAESC)  
Address: 4 North Double Springs Road, Farmington, AR 72730
- When:** Saturday, October 22, 2022 ---- 8:30am-12:00pm
- Cost:** \$20 per student (pay onsite the day of exam)
- How:** Register by contacting the G/T Coordinator in your district by **Friday, October 14<sup>th</sup>, 2022**  
(First Come, First Serve – Limited Space Available)

---

English – 45 items	(30 mins)
Math – 36 items	(40 mins)
Reading – 25 items	(30 mins)
Science – 30 items	(30 mins)

**\*Total time = 2 hours, 10 mins**

*\*There will also be an optional interest-career fit survey conducted beforehand (45-60 mins)*

Participants will need to bring:

- \$20 to pay onsite
- Sharpened No. 2 pencils
- Calculator for the math test (optional)



NORTHWEST ARKANSAS  
Education Service Cooperative

\*For more information, contact Dustin Seaton, M.Ed., Gifted and Talented Specialist  
Northwest Arkansas Education Service Cooperative (NWAESC)  
Ph: (479) 267-7450 or Email: [Dustin.Seaton@starfishnw.org](mailto:Dustin.Seaton@starfishnw.org)

- NWAESC STEAM Week - Nov. 7-11, 2022

## Early Career Educator Mentoring

Per the Arkansas Department of Education, the responsibility for planning and implementing an early career educator (formally known as novice) mentoring system was delegated to Education Services Cooperatives beginning with the 17/18 school year. As required by Act 295 of 2017, all early career educators are required to be mentored in their first 3 years of teaching through a DESE-approved mentoring program. NWAESC is the only DESE-approved mentoring program



in Northwest Arkansas.

[Click here to view our mentoring program outline and see the opportunities that are available for free to all novice teachers.](#) The cost of substitutes will be reimbursed at the end of each semester. Novice pd is completely FREE!

Please make sure all of your 1st, 2nd, and 3rd year teachers have completed the [novice teacher registry](#). We will only be able to cover the costs of professional development, including

**Missy Hixson, Ed.D.**

Assistant Director/Teacher Center Coordinator

[missy.hixson@starfishnw.org](mailto:missy.hixson@starfishnw.org)

*substitute reimbursement, for the novices on the registry.* We are currently up to 694 novice teachers on the registry with several districts still to add theirs!



**\*NEW\*** Mentoring Specialist: contact Madison Clarkson to come work with novice teachers, mentors, or instructional facilitators who support novice teachers!

[madison.clarkson@starfishnw.org](mailto:madison.clarkson@starfishnw.org) Our goal is to meet in each district with their novices at some point during the year. Thanks to 9 districts who involved us in their new teacher orientations, we are over halfway to our goal. Contact Cayce or Madison to set up your in-district novice meeting as soon as you can!

**\*NEW\*** Our Recruitment Specialist, Dustin Seaton, is working with high school teacher prep programs, such as Ed Rising. We are hosting an event on Friday, November 4 for high school students interested in becoming teachers that will include a keynote from Jessica Saum, Arkansas 2022 Teacher of the Year. Local colleges will also speak to students to help them find the program that is best suited for their needs. Contact [dustin.seaton@starfishnw.org](mailto:dustin.seaton@starfishnw.org) for more information.

### **Special Education Novice Teachers R&R**

We will continue differentiating for special education novice teachers. This year's anchor text will be [\*Reimagining Special Education: Using Inclusion as a Framework to Build Equity and Support All Students\*](#) by Jenna Mancini Rufo and Julie Causton. The novice SPED PLC will meet on the following dates: September 9, October 26, January 27, and March 29. All of these dates are live on EscWorks and ready for novices to begin registering.

My contact information is:

- Karen Brown [karen.brown@starfishnw.org](mailto:karen.brown@starfishnw.org) Ph. 479-936-6471

### **ArPEP**

ArPEP participants are working on building their differentiation skills this month, specifically in supporting special education students and students with dyslexia. General classroom differentiation will also be part of this learning.

We look forward to working with and supporting these teachers for the next two years!

### **Migrant**

#### **PLC Integration**

***Missy Hixson, Ed.D.***

Assistant Director/Teacher Center Coordinator

[missy.hixson@starfishnw.org](mailto:missy.hixson@starfishnw.org)

The goals of the Migrant Education Program center upon student learning in the areas of math and literacy, preparing students for success in school through Pre K education, and ensuring students are prepared for success in their post-secondary goals. We are very aware of the exciting and challenging work your districts are doing to improve the effectiveness of your Professional Learning Communities. To support your work I have created a [document](#) to illustrate how our NWAESC Migrant Education Program works to support your District PLC.

### **District Services**

The districts in Northwest Arkansas are each classified as Migrant Project or Migrant Non-Project based upon whether they accept their Migrant Education Program (MEP grant funding or partner with NWAESC for services. Migrant Project districts accept their MEP grant funding and agree to provide all required services for their MEP population. MEP Non-Project schools have chosen to partner with NWAESC to serve their MEP students.

For 2022-2023 the services for each classification are listed below:

<u>NWAESC PROJECT District Services</u>	<u>NWAESC NON-PROJECT District Services</u>
<ul style="list-style-type: none"> <li>* Fayetteville</li> <li>* Huntsville</li> <li>* Decatur</li> <li>* Siloam Springs</li> <li>* Springdale</li> </ul>	<p>(In addition to the support listed for PROJECT Districts, NON-PROJECT Districts receive these services)</p> <ul style="list-style-type: none"> <li>* Bentonville</li> <li>* Elkins</li> <li>* Farmington</li> <li>* Gentry</li> <li>* Gravette</li> <li>* Greenland</li> <li>* Lincoln</li> <li>* Pea Ridge</li> <li>* Prairie Grove</li> <li>* Rogers</li> <li>* West Fork</li> </ul>
<ul style="list-style-type: none"> <li>• Professional development opportunities focused on Pre K services, academic support, health services and improving graduation rates and postsecondary success for migrant identified students</li> <li>• Support as needed / requested from the team of specialists at NWAESC such as behavior support, ESL, Literacy, Math and Early Childhood</li> <li>• Data collection and support</li> <li>• Annual MEP Self-Evaluation support</li> <li>• Grant writing and compliance support</li> <li>• Monthly team meetings for District staff</li> <li>• Provide access to State MEP programs focused on student leadership and credit recovery</li> <li>• Support district staff in student identification as migrant families move within our region</li> <li>• Provide printing and delivery of federally required Employment Services upon request</li> <li>• Professional development and materials for MEP summer services</li> <li>• Resources that support Pre K instruction that meets the ADE Standards for Early Childhood Education</li> </ul>	<ul style="list-style-type: none"> <li>• Supplemental instructional support for Priority students above what is provided by the district</li> <li>• On-Track checks for all MEP secondary students completed each 4 /2 weeks</li> <li>• Two Way communication with the campus counselors to offer additional support when a need is identified (materials, tutoring, etc)</li> <li>• Home visits as needed</li> <li>• School supplies</li> <li>• Multiple deliveries of student selected books of interest</li> <li>• Scheduled student sessions with all secondary MEP students focused on postsecondary planning, supplies and student selected books</li> <li>• In-home Pre K services for students ages 3-5 that are not already enrolled in Pre K.</li> <li>• Early Childhood Screening with Brigance III for all Pre K students</li> <li>• Referrals for additional services are completed as needed</li> <li>• MEP recruiting and family identification</li> <li>• Beginning Winter 22-23, College and Career Readiness will be available to MEP students through an online, after school hours course taught by the MEP Coordinator for local high school credit for districts that elect to participate</li> </ul>

***Missy Hixson, Ed.D.***

Assistant Director/Teacher Center Coordinator

[missy.hixson@starfishnw.org](mailto:missy.hixson@starfishnw.org)

- If you have any questions or concerns please contact our office at [bridget.russell@starfishnw.org](mailto:bridget.russell@starfishnw.org) or via text or call at 501-860-4947.

## SPED Transition

Arkansas Transition Services now has a YouTube Channel. This channel has increased our ability to provide quick and easily accessible information for our schools and teachers. We have a number of modules on-line and are adding more as quickly as we can. This is in addition to our resource rich website [www.arkansastransition.com](http://www.arkansastransition.com).

## Computer Science

CS is now a mandatory graduation requirement for all students. If you have questions at a classroom, school or district level, contact [john.hart@ade.arkansas.gov](mailto:john.hart@ade.arkansas.gov). Kelly Griffin has been named DESEs new Director of Computer Science Education!

## Career & Technical Education (CTE)

### Information

- NWAESC will host DCTE for a Regional Opportunity Gap Workshop. Dates have not been announced.
- PEAK Innovation Hub and Western Arkansas Technical Center have offered tours for our administrators, tentatively scheduled for October 18.
- Multiple industry partners have reached out to offer industry tours and/or support for programming through the NWAESC.
- School tours and campus visits by CTE Coordinator are ongoing and scheduled on request. Contact: Starlinda Sanders [starlinda.sanders@starfishnw.org](mailto:starlinda.sanders@starfishnw.org)

<b>Grant(s) Received</b>	\$76,386.00	<b>Virtual Reality:</b> 12 VR Headsets will provide robust opportunities for Career Development students to engage in meaningful career exploration. Training will be provided at NWAESC when technology is received.			
	\$3,000	<b>Recruitment and Retention:</b> NWAESC maintains the largest group of CTE staff in the state who seek Endorsements to teach Internship, College & Career Readiness, and Career Development, and JAG. Funds will be utilized for training associated with DCTE's Work-based Learning Mentorship program.			
<b>Professional Development</b>	Ongoing: Mentorship Program for	Perkins Policies and Grant-Writing Workshop			

**Missy Hixson, Ed.D.**

Assistant Director/Teacher Center Coordinator

[missy.hixson@starfishnw.org](mailto:missy.hixson@starfishnw.org)

	Work-based Learning Endorsements	<b>EscWorks:489272</b>			
<b>Ongoing Perkins Projects Approved</b>	Professional Development, including travel and supplies	Industry Certifications	Certification Preparation Software	Real-Care Parenting Simulations	Admin. & Salary Costs

### Behavior Support Specialists (BSS)

We are back into full motion of providing behavior resources and supports. We are getting ready for a relaunch of **our newly revised BX3 initiative**. Click on the logo below to check out this short video describing the purpose and specifics of BX3.



We are offering trainings **virtually** across the state for the topic indicated below in the table. Check out dates at [arbss.org](http://arbss.org). Here is a list of our upcoming **in person trainings** at the Coop for 2022-2023:

Month	Training	Session Link
November 9, 2022	Behavior Forum	<a href="#">486640</a>
November 29, 2022	5 Essentials of School-Wide Positive Behavior Supports-Day 2	<a href="#">Private Link</a>
January 19, 2023	Targeted Behavior Interventions	<a href="#">486671</a>
February 15, 2023	Behavior Forum	<a href="#">486679</a>
February 22, 2023	Antecedent Based Interventions	<a href="#">486654</a>
March 10, 2023	Autism 101	<a href="#">487763</a>

**Missy Hixson, Ed.D.**

Assistant Director/Teacher Center Coordinator

[missy.hixson@starfishnw.org](mailto:missy.hixson@starfishnw.org)

March 16, 2023	Essentials of Classroom Behavior Management System	<a href="#">487752</a>
April 11, 2023	5 Essentials of School-Wide Positive Behavior Supports-Day 1	<a href="#">Private Link</a>
May 30, 2023	5 Essentials of School-Wide Positive Behavior Supports-Day 2	<a href="#">Private Link</a>

Make sure to check out our [arbss.org](http://arbss.org) webpage more resources like:

- Sign up for the monthly newsletter
- Free online module courses
- Behavior Breaks

Student-specific support services are available through [CIRCUIT](#). Here are some considerations before making a referral:

- Referrals related to severe behaviors and/or Autism Identification
- Must be in referral for or currently receiving special education services
- Make a CIRCUIT referral if the behavior(s) meet the criteria of severe behaviors, which are:
  - eloping from campus,
  - serious self-injury,
  - or serious injury to peer or staff that requires medical attention
- Follow steps outlined on website to submit referral

Please feel free to contact either of us with any questions or concerns. Our contact information is listed below:

- Lindsey Lovelady [lindsey.lovelady@starfishnw.org](mailto:lindsey.lovelady@starfishnw.org) Ph. 501-289-2916
- Kat Lancaster [kat.lancaster@starfishnw.org](mailto:kat.lancaster@starfishnw.org) Ph. 501-289-2857

## English Learners

The NWA ESOL Specialist, Lisa Coats, is leading professional development this week at Arch Ford to prepare teachers to use EL Achieve's Systematic ELD curriculum. This is one of our state partnerships to support teachers in advancing students' English language proficiency. Across the state, we have 18 districts involved in this year's training with approximately 80 teachers participating. Three of our NWA districts are currently having teachers participate: Gravette, Huntsville, and Siloam Springs.

**Missy Hixson, Ed.D.**

Assistant Director/Teacher Center Coordinator

[missy.hixson@starfishnw.org](mailto:missy.hixson@starfishnw.org)

ESOL coordinators have been working diligently to make sure that their Cycle 2 EL reports are clean in Cognos - big thanks to our Administrative Specialist, Erika Regier, for spending countless hours answering questions and walking coordinators across the state through this process! Coordinators have also been busy making sure that their English Learner Plans are ready for submission in Indistar. The EL Team will be working to review these soon.

The DESE EL Unit is working in tandem with other regional/content specialists across the state to guarantee that considerations are in place in all of the statewide initiatives to include language learners in all content areas. We are also participating in Cognitive Coaching through DESE in order to better serve all of our districts.

ARKTESOL will be hosted in Hot Springs this year on November 14. This is a great opportunity for ALL educators to learn more about helping language learners increase their proficiency and be successful in all areas, so please consider sending a team!

- Hot Springs Convention Center
  - [Registration Link](#)
  - [Hotel Discount Link](#)
  - [Vendor Link](#)

Tricia Kerr, DESE ESOL Director, will host the statewide coordinator meeting on November 15 at the Hotel Hot Springs. ***Registration information will be sent out soon through Eventbrite.***

To keep up-to-date, coordinators should join our NWA monthly meetings - always the 2nd Friday of the month, unless otherwise denoted.

#### **UPCOMING DATES AND escWORKS LINKS**

- [October 14](#)
- November - ARKTESOL State Coordinator meeting will take the place of this
- [December 9](#)
- [January 13](#)
- [February 10](#)
- [March 10](#)
- [April 14](#)
- [May 12](#)

If you have any questions concerning your English learners don't hesitate to contact me at: [lisa.coats@starfishnw.org](mailto:lisa.coats@starfishnw.org) or [lisa.coats@ade.arkansas.gov](mailto:lisa.coats@ade.arkansas.gov)

#### **APSCN/eSchool**

SMS Cycle 2 will be open **October 1st-October 15th** and I will be available for any assistance needed from your Cycle Reporting team. **More e-School Training Dates TBA.**

For any questions please contact Chelsea Canion at [chelsea.canion@ade.arkansas.gov](mailto:chelsea.canion@ade.arkansas.gov)

***Missy Hixson, Ed.D.***

Assistant Director/Teacher Center Coordinator

[missy.hixson@starfishnw.org](mailto:missy.hixson@starfishnw.org)