

Match the Rhyming Words



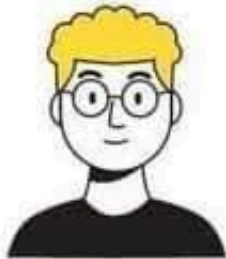
mail



cut



dog



he



nut



she

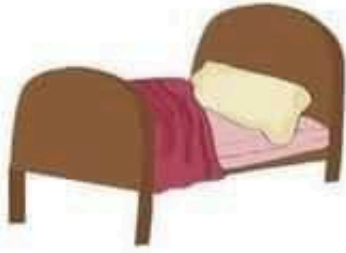


snail



frog

Match the Rhyming Words



bed



bee



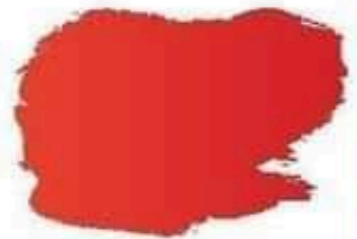
bug



car



jar



red



tree



mug

Match the Rhyming Words



pin



cat



pop



win



book



stop



bat



hook

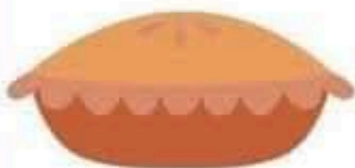
Match the Rhyming Words



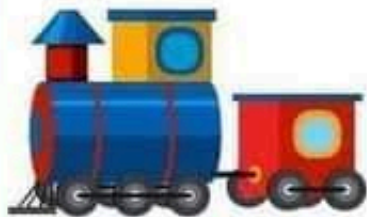
mail



map



pie



train



nap



rain

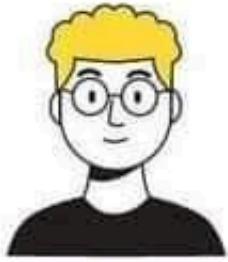


snail



tie

Match the Rhyming Words



he



vet



hop



she



jam



mop

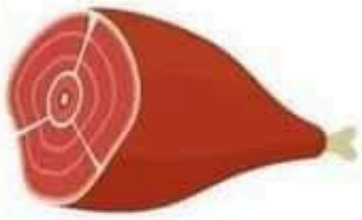


jet



ram

Match the Rhyming Words



ham



pig



dog



hen



pen



frog



dig



yam

Match the Rhyming Words



cat



cub



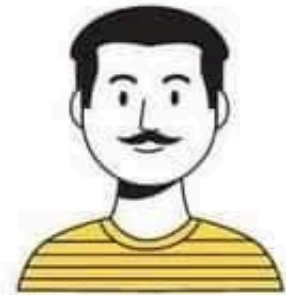
cut



fan



nut



man



tub



hat

Match the Rhyming Words



bug



sun



bun



mug



can



jar



car



pan

Match the Rhyming Words



bee



hook



big



pig



box



tree



book

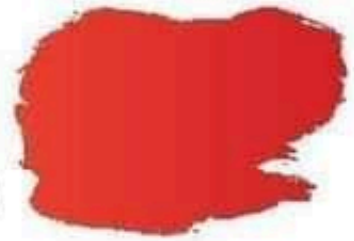


fox

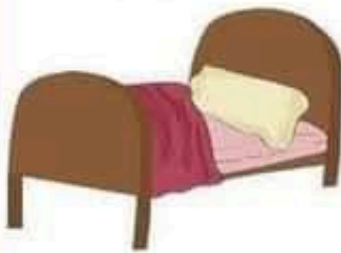
Match the Rhyming Words



ball



red



bed



tall



bat



coat



boat



cat