

# OpenStreetMap for Transport Action

what is it

why?

how to use it in a story

how to edit

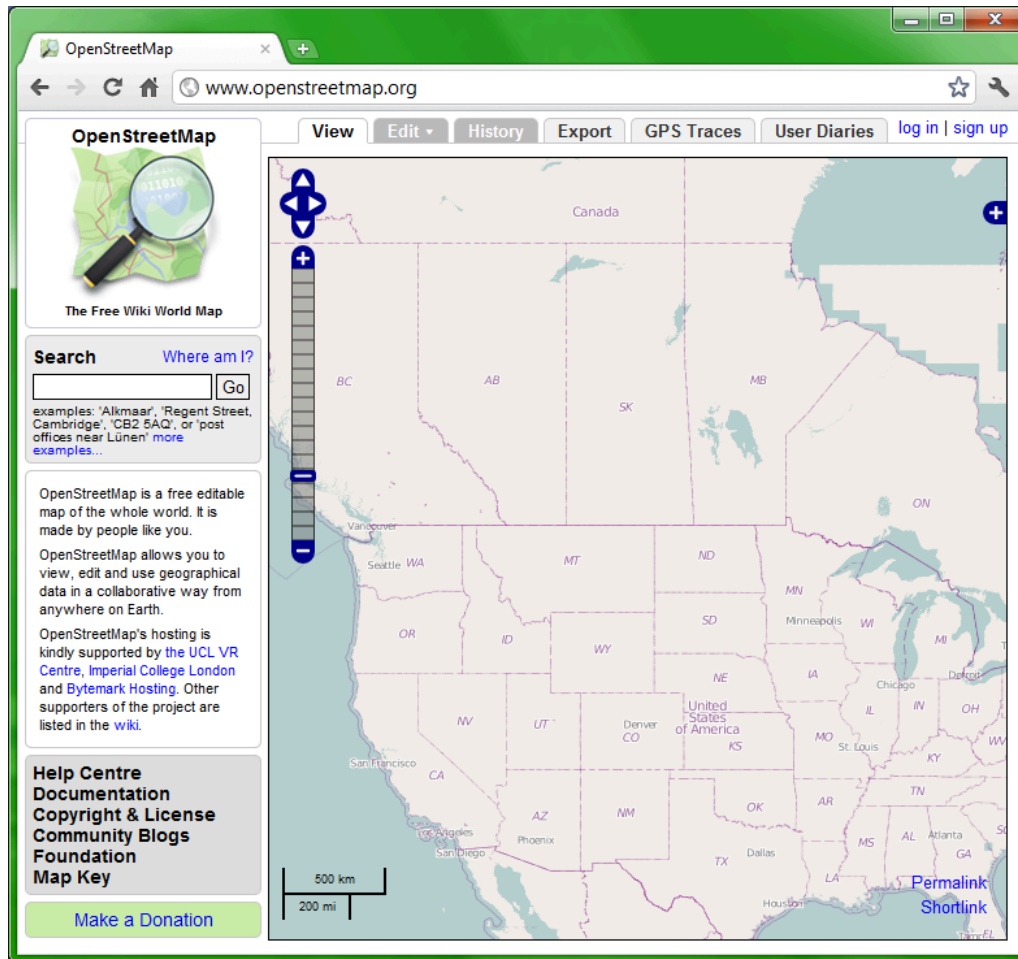
## What is OpenStreetMap

The wikipedia of maps.

## How to navigate

You don't have to have an account to look at the maps and export a map to paste into a document.

Navigate to <http://www.openstreetmap.org/>

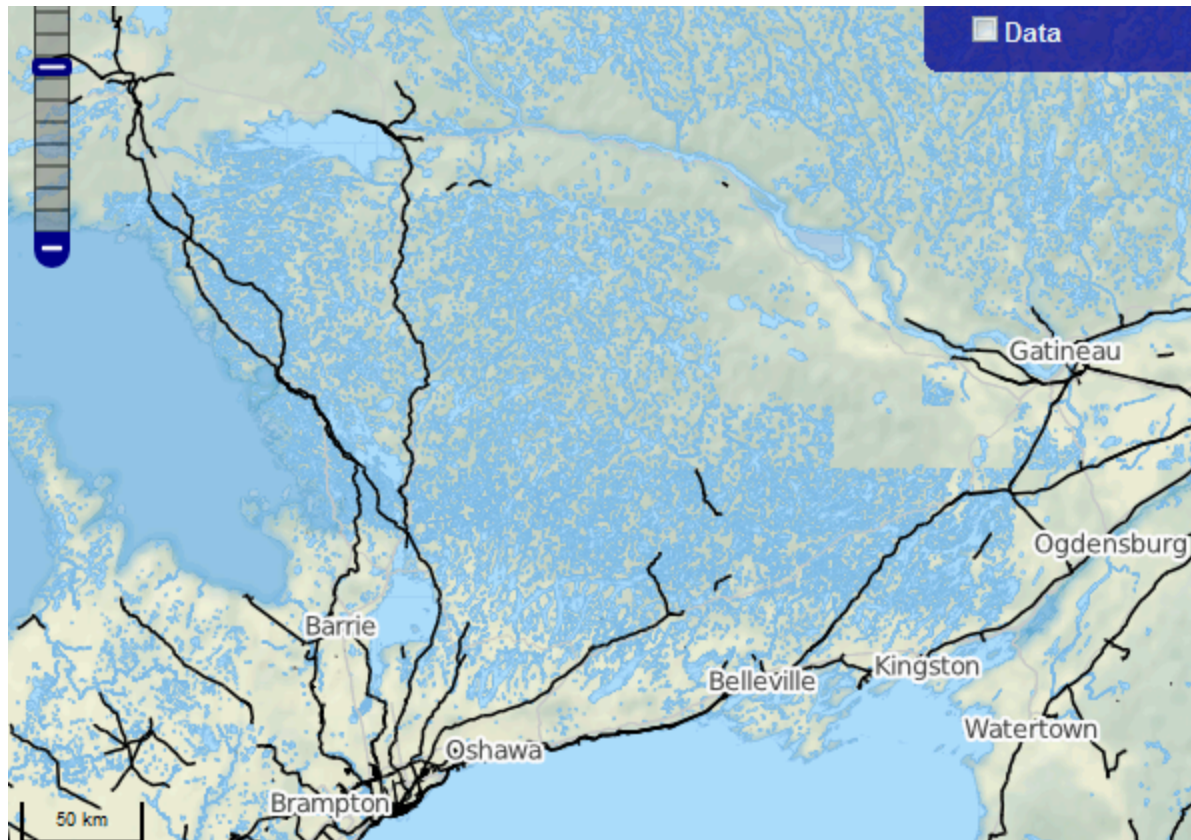


**Zoom into the area you want with your mouse wheel, or the navigation controls on the top left of the map. You can also hold down the Shift key and draw a box around the area you want. Hold down the mouse button and drag to pan around the map.**

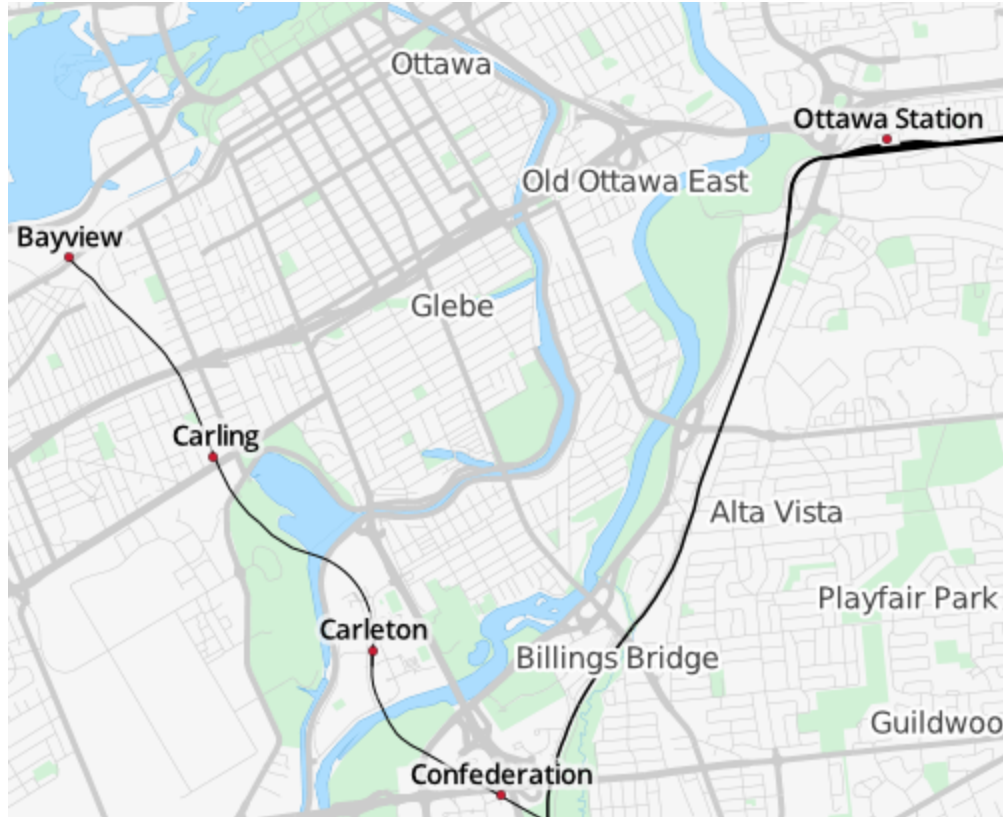
Explore the different Base Layers using the blue and white plus sign on the upper right side of the map. There are currently five different base layers.

1. Mapnik - general purpose map - the default
2. Osmarender - another general purpose map
3. Cycle Map - highlights bike paths and facilities of interest to cyclists
4. Transport Map - puts roads into the background and shows railways in black, buslines in red including railway stations and bus stops at higher zoom levels.
5. MapQuest Open - highlights roads

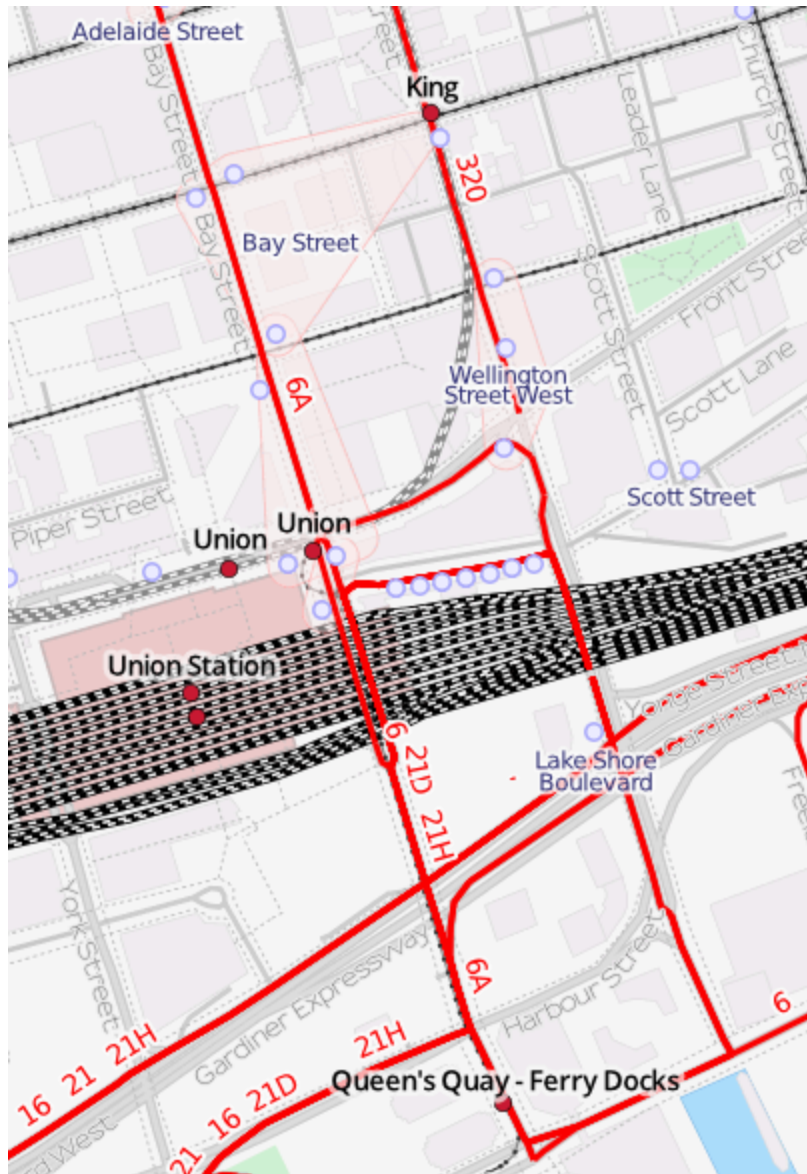
Test out the different base layers at different zoom levels. The following screenshots use the Transport Map Base Layer.



Note that the map is incomplete. Not all of the railways have been entered into the OSM database. Lines along the Ottawa Valley are missing, there are gaps. Also some long abandoned railways are still showing up.

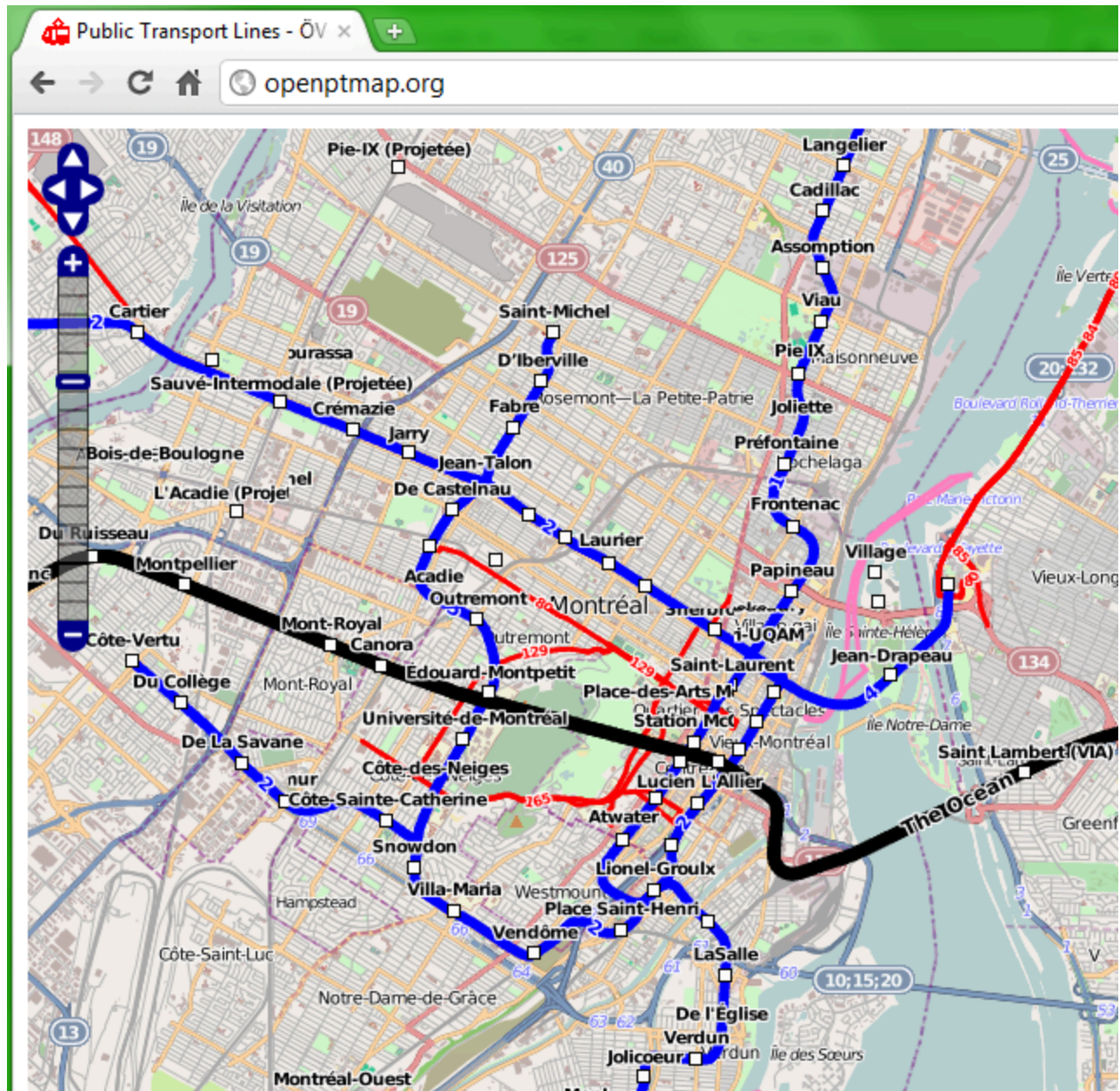


At higher zoom levels you will start to see more details. The O Train line and VIA station. nobody has entered the bus routes of Ottawa into the database yet.



Example from Toronto shows subways, buses, streetcars, stations, bus stops and rail lines.

Another way of looking at OpenStreetMap is at the [openptmap.org](http://openptmap.org) site. It shows bus routes, railway routes, ferries and other public transit as an overlay on top of the standard base layers.



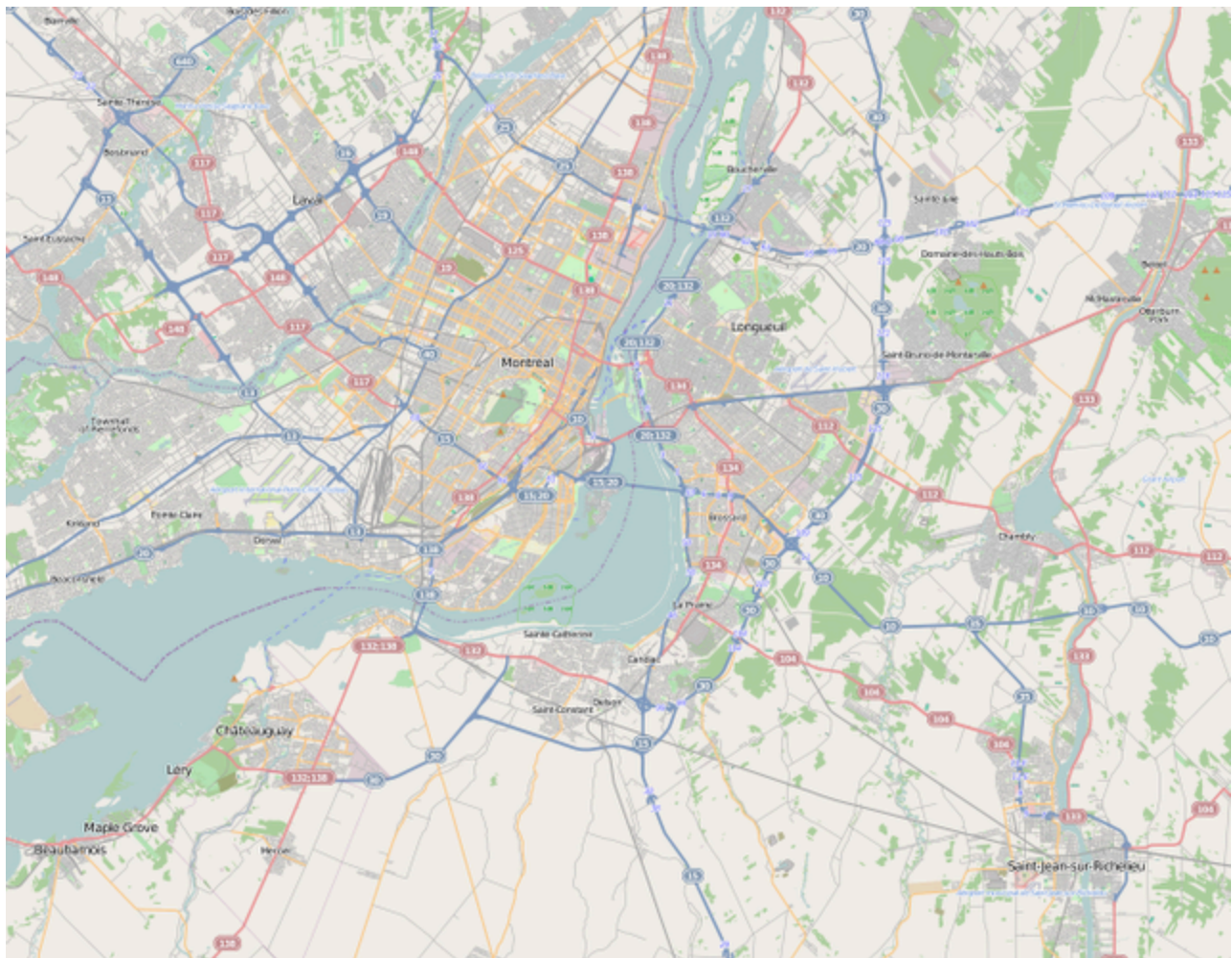
Montreal

Jim here: Your intro helped me a lot.

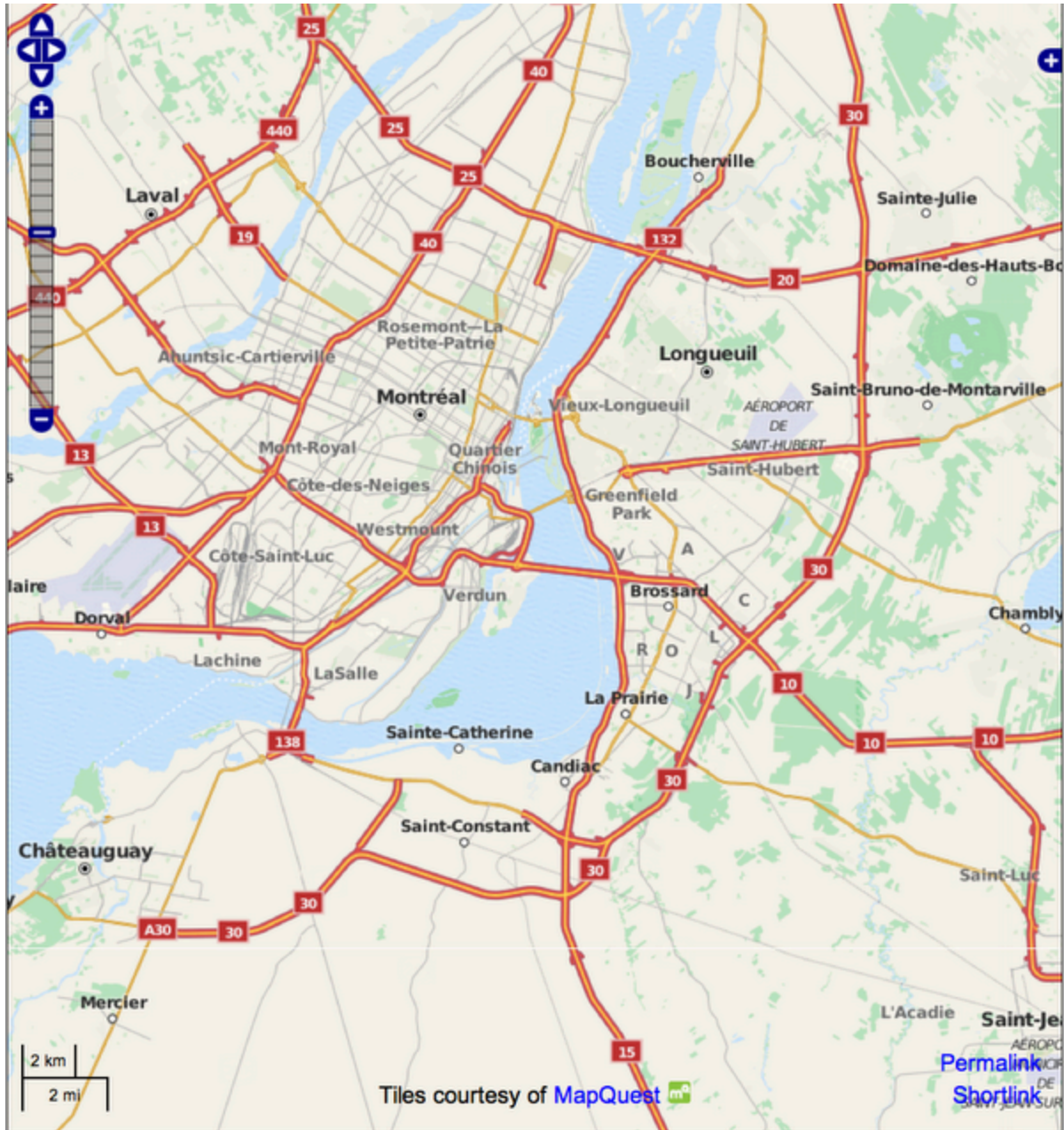
I was thinking Transport Action and bridges

The Champlain

## Mapnik



Screen grab



The code for embedding into a web sit works easily.

<https://sites.google.com/site/jgossandassociates/map>

```
<iframe width="425" height="350" frameborder="0" scrolling="no" marginheight="0"
marginwidth="0"
src="http://www.openstreetmap.org/export/embed.html?bbox=-74.04,45.073,-72.989,45.861&a
mp;layer=mapnik" style="border: 1px solid black"></iframe><br /><small><a
```

<http://www.openstreetmap.org/?lat=45.467&lon=-73.5145&zoom=9&layers=M>>View Larger Map</a></small>