

**PRESIDENT'S OFFICE**  
**REGIONAL ADMINISTRATION AND LOCAL GOVERNMENT**  
**KIBAHA TOWN COUNCIL**  
**NYUMBU SECONDARY SCHOOL**  
**FORM THREE MID - TERM EXAMINATION**

**CODE: 036/1    INFORMATION AND COMPUTER STUDIES 1**

**TIME: 2:30 HOURS**

**August, 2023**

---

**Instructions**

1. This paper consists of section A, B and C with a total of **eleven (11)** questions.
2. Answer **all** questions.
3. Section A carries **Sixty (16)** marks, section B carries **fifty-four (54)** marks and section C carries **thirty (30)** marks.
4. **All** writing must be in **black** or blue ink.
5. Cellular phones, calculators and any unauthorized materials are **not** allowed in the examination room.
6. Write your **Examination Number** in every page.

## SECTION A (16 Marks)

Answer **all** questions in this section

1. For each of the following items (i) – (x) choose the most correct answer among the given alternatives and write its letter beside the number in the answer booklet provided
  - i) The main difference between data and information is :-
    - A. Data is the processed raw facts and number while information is a processed data
    - B. Data is a raw fact and figure that is not processed while information is a processed data
    - C. Data is meaningless while information is useless
    - D. Data can be used in decision making while information cannot be used
  - ii) Computer software is sometimes known as computer program which program would you use in preparing application letter
    - A. Microsoft Excel
    - B. Microsoft power point
    - C. Microsoft word
    - D. Microsoft access
  - iii) Word processor supports enhancement of documents appearance to make font and font style more appealing. What action classifies this feature of a word processor?
    - A. Creating document
    - B. Formatting document
    - C. Editing document
    - D. Decorating document
  - iv) The main elements of communication are:-
    - A. Source, medium and Feedback
    - B. Source, Medium, Receiver and Feedback
    - C. Source, Medium and Receiver
    - D. Source, Receiver and Feed back
  - v) The main advantage of laptop computer over a desktop computer is:-
    - A. Faster processing speed
    - B. Large hard disk and ram
    - C. Small size hence more portable
    - D. Very cheap
  - vi) How many sheets are there in Excel Worksheet by default?
    - A. 3
    - B. 2
    - C. 4
    - D. 5
  - vii) The process of converting data from machine-readable into human-readable form is:-
    - A. Decryption
    - B. Encryption
    - C. Encoding
    - D. Decoding

- viii) The internet today has been made possible by:-
- Internet cyber cafes
  - Internet service provider
  - Email services
  - Advanced network system
- ix) The linking of one or more computers together to communicate and share resources is called: -
- Transmission
  - Integrating
  - On-line sharing
  - Networking
- x) Which of the following can be used to avoid data loss due to disk damage or failure in a computer?
- Installing licensed antivirus
  - Creating backup
  - Using password
  - Creating separate user accounts
2. Match the following functions of input devices in List A with their corresponding devices in List B by writing the letter of the correct corresponding devices below the number in the table provided

LIST A	LIST B
i) A device used to capture data from an object and converting it into digital format.	A. Joystick
ii) A device that uses radio or infrared waves instead of being physically connected to the system unit.	B. Cordless mouse
ii) An input device used on portable devices such as laptops and mobile phones.	C. Printer
v) A device used to enter data in form of speech into the computer	D. Remote control
v) A device that looks like lever used to control pointer on the screen.	E. Scanner
vi) A device that is used to control other devices using intra-red signal	F. Monitor
	G. Keypad
	Keyboard

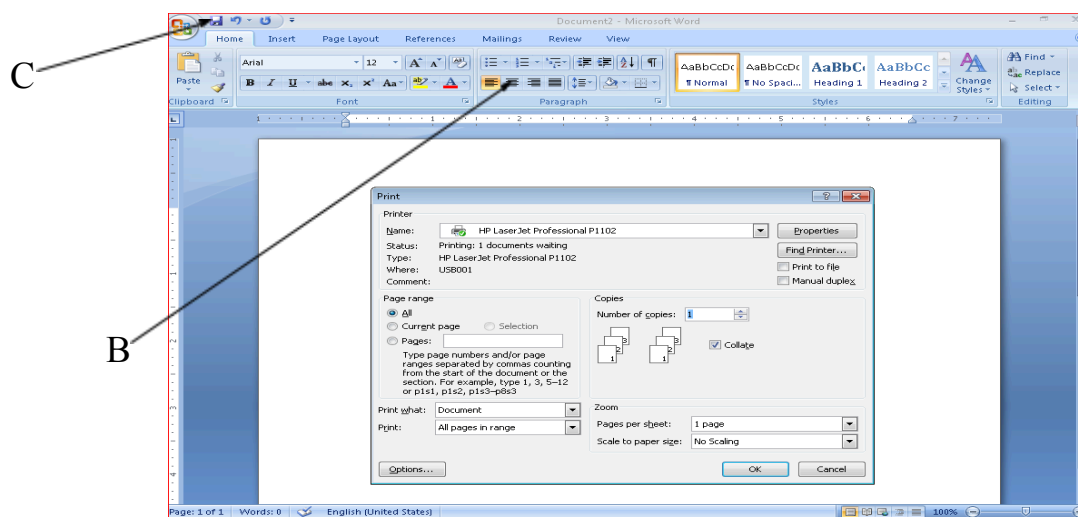
### SECTION B (54 Marks)

Answer **all** questions in this section

3. (a) Define the term computer networking. (1 mark)
  - (b) List and explain four reasons why computer networking is important. (1.5 @ = 6 Marks)
  - (c) Explain at least two networking layout that you know. (2 marks)
4. (a) The figure below shows data entered into a Spread sheet application

	A	B	C
1	<b>Biology</b>	<b>kiswahili</b>	<b>Total</b>
2	58	56	<b>114</b>
3	67	<b>67</b>	<b>134</b>
4	34	34	<b>68</b>
5	90	90	<b>180</b>
6	65	65	<b>130</b>
7	77	77	<b>154</b>

- i) What is the cell reference of the active cell? (2 marks)
  - ii) Write the formula used to calculate the sum of C2, C3, C4 and C5 (4 marks)
- (b) Define the Spread sheet terminologies (1 mark @ = 3 marks)
- i) Work book
  - ii) Active cell
  - iii) Rows
5. The snapshot below and answer the following questions



- (i) Write the names of letter B and C (1.5 @ = 3marks)
  - (ii) What is the file name of snapshot (2 marks)
  - (iii) What is the name of the printer which have been selected (2 marks)
  - (iv) How many copies which can be printed once (2 marks)
6. (a) Define computer virus (2 mark)
- (b) What are four signs that shows the computer have affected by virus. (1.5 marks @ = 4marks)
- (c) What are two the prevention should put in place in order to prevent computer from data loss.
7. Give six factors to think about when purchasing a new computer, and explain each one. (1.5 mark @ = 9marks)
8. Describe the different computer generations and technologies that each generation uses. (09 marks)

### **SECTION C (30 MARKS)**

Answer **two** questions from this section

9. Explain four (4) functions of operating system in the computer
10. Briefly explain six (6) roles of ICT in the society
11. Describe six (6) applications of database in the society