

# Instructions for Field Professional Experiences in Bioengineering / Biomedical Engineering

Author Name I. Surname<sup>1</sup>, Author Nombre B. Apellido<sup>2</sup>,  
Author Name L. Surname<sup>3</sup> and Author Name N. Surname<sup>3</sup>

<sup>1</sup>Departamento de Ingeniería Clínica del Hospital Nacional....., Ciudad, País.

<sup>2</sup>Profesional independiente, Emprendedor en ..., Consultor en proyectos de ..., Ciudad, País.

<sup>3</sup>Director Técnico e implementador de sistemas de Calidad, Ciudad, País.

**Abstract—** This is the abstract in English. Please, the summary should be self-contained. It should explain the motivation, objective of the work developed, the main idea of the method and some results.

**Keywords—** Example, machine learning, processing, clustering.

**Resumen—** Este es el resumen en español. Procure que el resumen sea autocontenido, que explique la motivación, el objetivo del trabajo, la idea central del método y algunos resultados obtenidos.

**Palabras clave—** Ejemplo, aprendizaje de máquina, procesamiento, agrupamiento.

## I. SCENARIO<sup>1</sup>

T

he first word includes the first letter in capital, covering the first two paragraph lines in size. Summarize shortly the main issues and the way to deal it.

## II. PROJECT HYPOTHESIS

In this section the issue should be presented, including the surrounding conditions, and the resources in field. The steps towards to the potential solution should be presented too.

### A. Sub-sections and Sub-titles

These intermediate sections may help to organize the article in its structure. Divide the whole idea to a better understanding.

### B. Figures.

Include clear figures with focus and high-resolution quality. Axis and letter should be clearly read. Keep the style and comments below the figures. Comments in a single line should be centered or justified if longer.

The abbreviation for figure should be Fig. 1 as example.

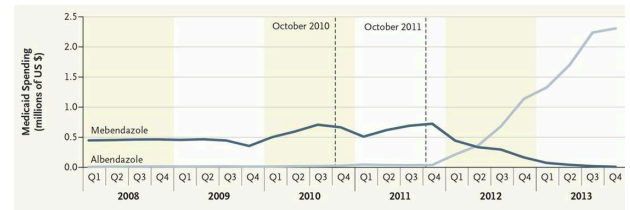


Fig. 1: Centered single comment.

### C. Equations (/optional).

Equations (in case you require to show ones) that will be referenced later or it is expected to look highlighted will be included in a table as shown in the following case:

$$\begin{aligned} L_1 &= \bar{x} \\ L_2 &= \bar{x} + 2\sigma \end{aligned} \quad (3)$$

and when the sentence is continued, which is very common, no capital or indentation should be used. If possible, respect the punctuation marks, including a comma after the equation, if applicable, or a final dot if the sentence ends.

In case of citing equations in the text,  $P_0 = (x_0, y_0)$ , include them using the equation editor  $P_1 = (x_1, y_1)$ , to maintain coherence in the symbols,  $P_i = (x_i, y_i)$ . The following is an additional equation:

$$m = \frac{y_1 - y_0}{x_1 - x_0} \Rightarrow y = m(x_1 - x_0) + y_0 \quad (2)$$

where the sentence continues and here some additional remarks for Eq. 2 could be added.

### D. References.

It is convenient to use a reference manager, such as Mendeley, IEEE or similar, to avoid inconsistencies in the

<sup>1</sup>Contacto: Author Name, Address, Institución a la que pertenece. Av. Street 1100, City, Country, Phone +5422665400000, [email@domain.edu.ar](mailto:email@domain.edu.ar).

reference formatting. Use brackets when they are mentioned in the text [2, 3].

### III. PROJECT EVOLUTION

In this section the achieved milestones and the experiences during the working period should add important reference to the audience. A detailed timeline can show technical aspect to be used in other projects. Relevant pictures could be included for better explanation.

### IV. RESULTS

In this section you can include tables with the appropriate formatting according to its contents. An example is shown in Table I. The tables are indicated in Roman numerals.

TABLA I  
TÍTULO BREVE DE LA TABLA.

Columna 1	Columna 2	Columna 3
Método 1	33 – 34 – 35 – 36 –	191.0430
Método propuesto (fila sombreada)	7 – 14 – 9 – 32 – 37	134.7321
Método 2	33 – 34 – 11 – 328	140.8483
Método 3	6 – 34 – 14 – 05 – 72	147.7286
Método 4	11 – 72 – 45	147.1234

Include comments below the table to help the result understanding.

A progression of key indicators as well as behavioral changes achieved, procedures and registration forms adapted to the new job dynamics, new aspects achieved between clinical, technical personnel, external consultants, companies, and community in general too are important details to show the results.

### V. CONCLUSIONS

A development that allows ...

Include the main points of the work developed and highlight the contribution made.

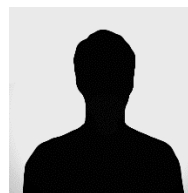
One or two paragraphs of future work may be included in order to continue the research or development.

### ACKNOWLEDGMENTS

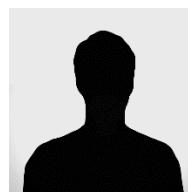
You can include in this section thanks to the institutions that financed the work or project or to people who want to untie their collaboration.

### REFERENCES

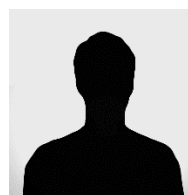
- [1] B. Lange, C.-Y. Chang, E. Suma, B. Newman, A. Rizzo, and M. Bolas. Development and evaluation of low cost game-based balance rehabilitation tool using the Microsoft kinect sensor. Pages 1831-1834, 2011. ISSN 1557-17
- [2] M. Abdur Rahman, A. M. Qamar, M. A. Ahmed, M. Ataur Rahman, and S. Basalamah. Multimedia interactive therapy environment for children having physical disabilities. In Proceedings of the 3rd ACM conference on International conference on multimedia retrieval, ICMR '13, pages 313-314. ACM, New York, NY, USA, 2013. ISBN 978-1-4503-2033-7.  
URL <http://doi.acm.org/10.1145/2461466.2461522>
- [3] Ting-Yang L., Chung-Hung H, Jiann-Der L. A Kinect-based system for physical rehabilitation: Utilizing Tai Chi exercises to improve movement disorders in patients with balance ability. In: 2013 7th Asia Modelling Symposium (AMS). New York: IEEE; 2013: 149–153.
- [4] M. Abdur Rahman, A. M. Qamar, M. A. Ahmed, M. Ataur Rahman, and S. Basalamah. Multimedia interactive therapy environment for children having physical disabilities. In Proceedings of the 3rd ACM conference on International conference on multimedia retrieval, ICMR '13, pages 313-314. ACM, New York, NY, USA, 2013. ISBN 978-1-4503-2033-7.  
URL <http://doi.acm.org/10.1145/2461466.2461522>.
- [5] A. Bigdelou, T. Benz, L. Schwarz, and N. Navab. Simultaneous categorical and spatio-temporal 3d gestures using kinect. In 3D User Interfaces (3DUI), 2012 IEEE Symposium on, pages 53-60, 2012.



**Autor 1** specialist in .....Company, Hospital, experience .....Optional Section. Photos should have 2.5 cm width.



**Autor 2** specialist in .....Company, Hospital, experience .....Optional Section. Photos should have 2.5 cm width.



**Autor 3** specialist in .....Company, Hospital, experience .....Optional Section. Photos should have 2.5 cm width.