

# Acute Stroke Brain WO Protocol

Scan notes:

Revised 01/18/2023

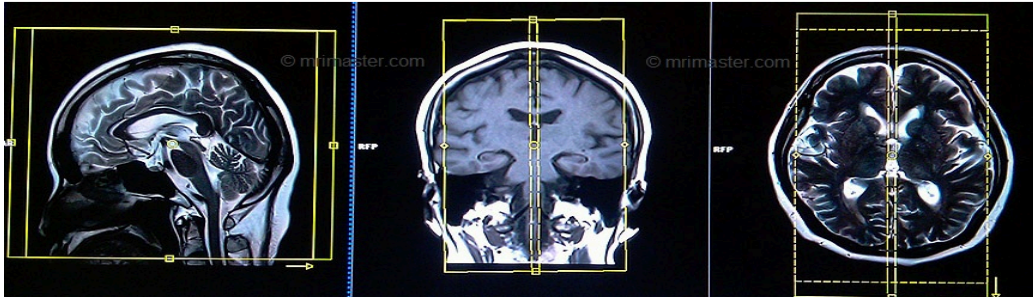
Charge as: Brain WO IV CONTRAST

Scanner: 1.5T or 3T

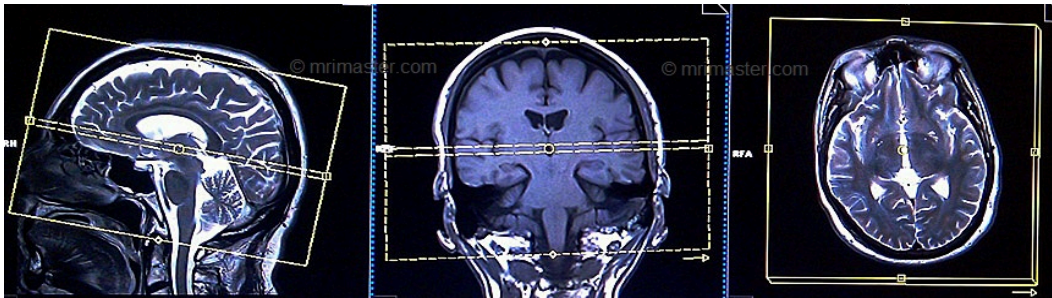
Coil: Head Coil/Flex Coil (flex coil may be needed if anterior head coil cannot clamp)

| <b>Plane</b> | <b>Weighting</b> | <b>Slice</b> | <b>Gap</b> | <b>FAT SAT</b> | <b>Scan Range</b>   |
|--------------|------------------|--------------|------------|----------------|---|
| <b>SAG</b>   | T1 MPRAGE 3D     | 1mm          | 0.5mm      | None           | Whole brain/parallel to midline of brain.<br>NO REFORMATS |
| <b>AXIAL</b> | Diffusion        | 4mm          | 0mm        | None           | Whole brain/parallel to AC/PC line                        |
| <b>AXIAL</b> | T2 Flair         | 4mm          | 0mm        | Strong         | Whole brain/parallel to AC/PC line                        |
| <b>AXIAL</b> | T2 GRE           | 4mm          | 0mm        | None           | Whole brain/parallel to AC/PC line                        |

### SAG Image Planning:



### AXIAL Image Planning:



### COR Image Planning:

