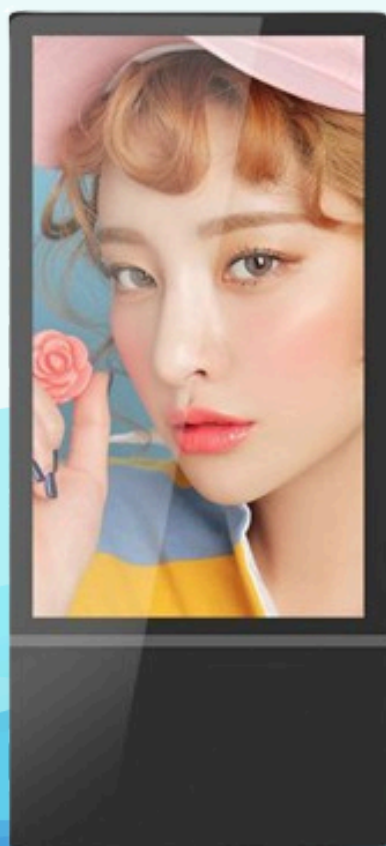




# Elevator digital display - Model A7 18.5"

February 4th, 2024



◉ Ultra narrow bezel

◉ 2K display

◉ Remote management

Guangdong HUSHIDA Electronic Technology Co.,Ltd.

# Product Features

- Support 8/8bitbit dual-channel LVDS (1920\*1080) high-definition display
- Built-in self-developed multimedia information release system
- Supports multiple media styles such as pictures, videos, music, dynamic text, slideshows, interactive applications, dynamic tables, web pages, static text, APK applications, office files, etc.
- Supports display of station logo, date/time/week, weather forecast and real-time subtitles. Support background image and background color customization
- Intelligent schedule, supporting multiple playback modes such as loop, timing, and insertion. It supports scheduled release and scheduled release of programs, re-release of historical programs, and automatic clearing of expired programs, effectively reducing labor costs and remotely updating and managing playback content. It supports U disk import or direct playback. Super multi-period timer on and off function, unattended.
- Program preview, multi-level review, and layer-by-layer checks ensure that information is conveyed accurately. Support enterprise personalized customization and business expansion..
- Switch between horizontal and vertical screens at will, smooth transition without black screen.
- Terminal remote monitoring, real-time status viewing, and rich business reports and management reports.
- Powerful system health monitoring, supports fault warning, and prompts error messages in a timely manner.
- Terminal system remote upgrade, intelligent domain name resolution, secure backup, convenient and fast operation and maintenance
- Supports wide area network, local area network, VPN/WiFi/3G network release, cross-region, cross-province and city, multi-network easy networking

# Specifications

## Display

Size	18.5 inch
Resolution	1366 x 768 pixels
Backlight type	E-LED
Responsive Time	7ms
Displaty Area	409.8 x 230.4mm
Resolution	1366 x 768(FHD)
Refresh Frequency	60Hz
Color gamut	60% NTSC (CIE1931)
Viewing angle	89/89/89/89 (Min.)(CR≥10)
Contrast(Typ)	1300:1
Brightness	250cd/m²
Screen Brightness(Typ)	2000cd/m²
Life Time	≥50000 hours

## Operation System

System Version	Android 8.0
Ram	1G DDR3
Rom	8G
CPU	T.MSD358.93

Interface	USB*2, RJ45, power supply, TF, HDMI input, audio output
-----------	---

## Electrical

Power Input	100-240V~50/60Hz
Max power consumption	25W
Cooler	<p>Intelligent cooling system, uniquely designed air duct and main board, automatically adjusts wind speed and volume</p> <p>Intelligent temperature sensing system, automatically turns off the display when the temperature reaches 65°C</p> <p>-5°C self-start heating/optional</p>

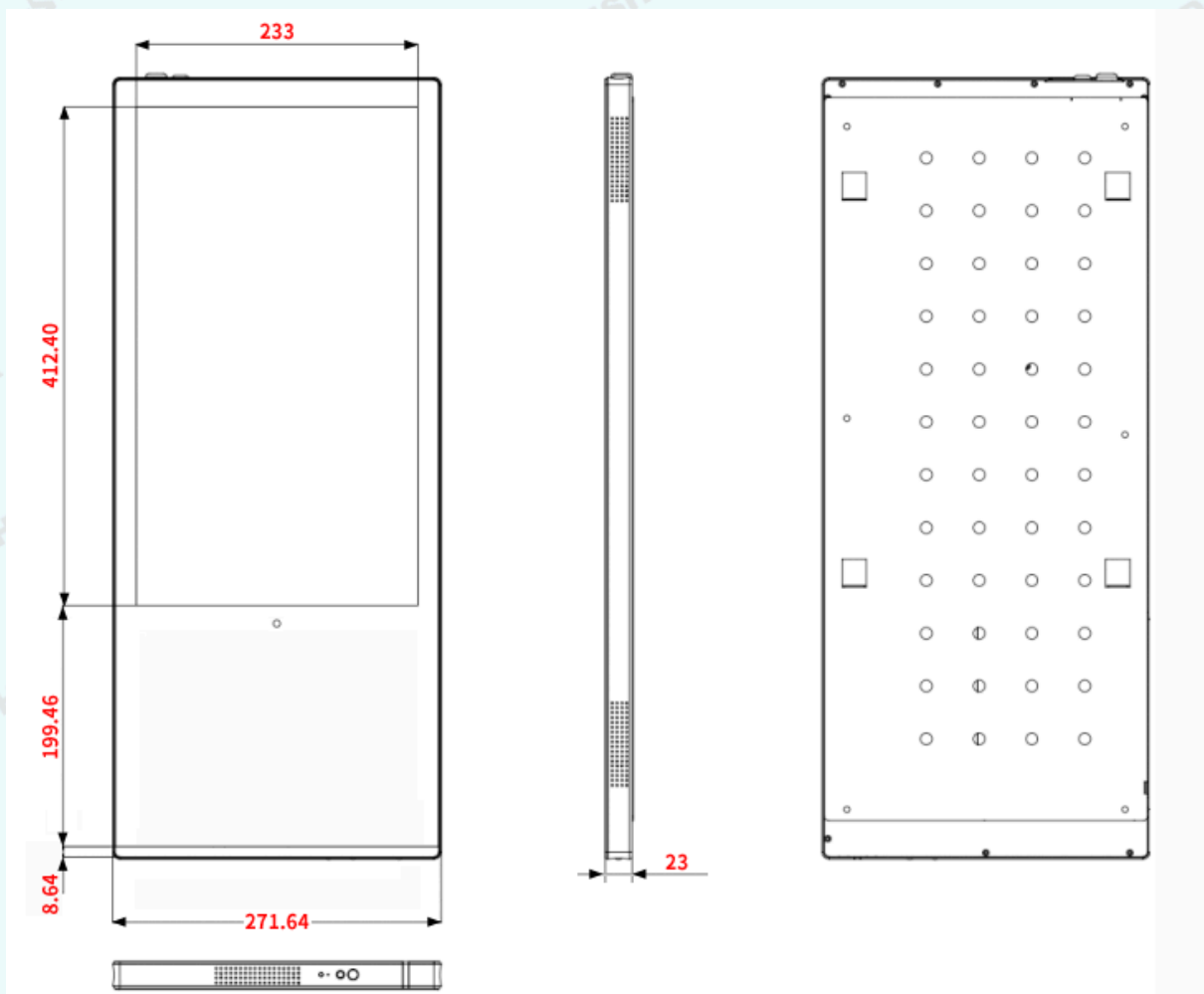
## Physical Parameters

Machine Size (l × w × t)	655 x 281 x 32.89mm
Shell material	Aluminum alloy/sheet metal
Power interface	Medium standard 220V
Leakage Protector	Yes
Power	Industrial Power
Net Weight	///
Gross Weight	///

## Enviroment

Working Temperature	0°C ~ 40°C
Stocking Temperature	-10°C ~ 60°C

## Size Chart



# Contact HUSHIDA Team

Email: [support@hushidaglobal.com](mailto:support@hushidaglobal.com)

WhatsApp: +1 909 905 7781

Phone: +86 18576560374

Website: <https://hushidaglobal.com>

Retail Website: <https://www.hushidasmart.com>

“互动视界，智达未来”

“Interactive Vision, Intelligent  
Future”

