
Level: Intermediate+



Photo by [freestocks.org](https://www.freestocks.org) on [Unsplash](https://unsplash.com)

TV Suggestions

Warm up

Can you suggest a good TV programme and explain why you think someone should start watching it?

Vocabulary Review

American English	British English
TV show/program	TV programme
Season	Series

Task 1 - Match the expressions on the left with the definitions on the right

	Expression		Definition
___	Season finale	1.	The first showing of a TV programme or film
___	Episode	2.	The ending of a TV episode or series that leaves the viewer in suspense
___	A cliffhanger	3.	To watch more than 3 episodes of a TV show in one sitting
___	To binge-watch	4.	One part of a season or series
___	To premiere	5.	The final programme in a TV series

Task 2: Dialogue

Read the dialogue with your teacher or partner, underline the expressions that are used to make suggestions.

- Mickey: Did you watch the last season of Homeland?
- James: Yes. The season finale was amazing.
- Mickey: I agree, it was a real cliffhanger! I can't wait for the next season to start.
- James: I read that the new season will be premiering in November.
- Mickey: Great news, but what will I watch until then. Can you suggest a good show?
- James: What about Game of Thrones?
- Mickey: I've already watched all 7 seasons.
- James: Hmm, how about Outlander?
- Mickey: I binge-watched all 3 seasons last year. I have also read the books.
- James: I have an idea! Why don't you watch The Walking Dead?
- Mickey: That's an excellent idea! I'll see if it's still available on Netflix.
- James: Let's watch it together. I'd love to see it again from the beginning.

Comprehension

1. What is the dialogue about?
 2. Which shows did they talk about in the dialogue?
 3. Have you seen any of these shows?
-

Vocabulary review

Positive Suggestions:

- **Why don't ...?**
Why don't we watch Friends?
Why don't you switch off the television and go to bed?
- **Let's (let us) ...**
Let's watch the latest episode of Sherlock this evening.
Let's go to the cinema rather than watch a movie on Amazon.
- **What about/How about + -ing?**
What about staying in tonight and watching some TV?
What about switching off the TV and going out for a drink?
- **Suggest + that-clause**
I suggest that we binge-watch season 2 tonight.
I suggest that we sign-up for Amazon Prime so that we can watch our favourite HBO shows.
- **I suggest + -ing**
I suggest cancelling your Netflix membership, you hardly ever watch TV.
I suggest watching Seinfeld, it's hilarious.
- **Suggest + noun phrase**
My friend suggested a good show.
I suggest the new series of Vikings.
- **Could/Should**
You could watch Modern Family.
We should get a new TV.
- **If I were you, I would... (second conditional)**
If I were you, I'd watch Grey's Anatomy.
If I were you, I'd get Netflix.

Negative Suggestion:

- **Let's not...**
Let's not watch Grey's Anatomy, let's watch ER instead.
Let's not watch the next episode, I'm too tired.
 - **Don't let's...**
Don't let's renew our Netflix membership, it's too expensive.
Don't let's watch the new season of Westworld, I haven't finished watching the last season yet.
 - **I don't think + subject + should...**
I don't think we should watch another episode tonight, it's very late.
I don't think you should watch that show, it contains too much violence.
-

Accepting and Rejecting Suggestions:

Accepting Suggestions	Rejecting Suggestions
That's a good idea.	Thanks for the suggestion, but....
Good suggestion!	I'm not sure that's a good idea.
That sounds like a good idea.	I don't feel like it.
That sounds great.	I don't think we should.
What a good idea!	What an awful idea!
Great idea/suggestion!	I'd rather not.

Task 3: Making Suggestions

Roleplay the situation below. Student 1 makes the suggestions, student 2/teacher responds. Take 2 minutes to prepare the suggestions/responses before starting. Use a variety of expressions and use the correct grammar structure with the suggestion expressions.

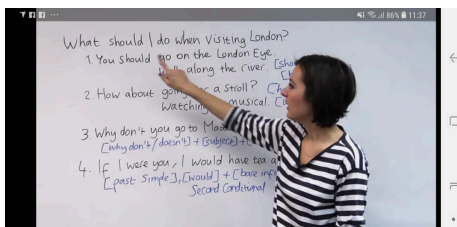
Suggestions	Response
1. Stay home and watch TV	Accept
2. Watch a film	Reject
3. Watch a TV show (name the show)	Reject (explain why)
4. Watch another kind of show (name the show and explain why)	Accept
5. Have popcorn and a glass of wine while watching the show	Accept

Task 4: Match the statements with the responses below**Statements**

1. Would you mind if we stayed home tonight?
2. Can you suggest a good show to watch on Netflix?
3. Let's watch another episode.
4. What do you feel like doing this evening?
5. I've just binge-watched 5 episodes of The Crown.

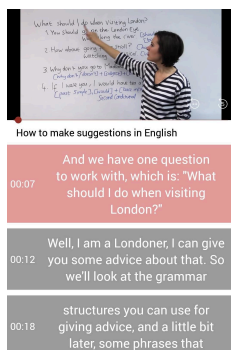
Responses

- a. I don't think we should, I need to get up early tomorrow morning.
 - b. Why don't you watch the new season of Insecure?
 - c. No, not at all. Let's have a night in and watch TV.
 - d. If I were you, I would switch off the TV and go outside for a walk.
 - e. I'm easy, you decide.
-



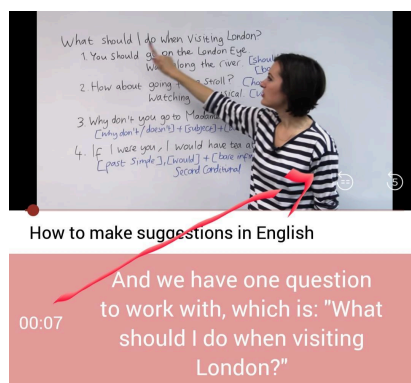
Part 2 - Improve understanding

Watch the first part of the video again. This time, turn your phone to portrait mode. Listen and read along with the text using the Woodpecker text assistant tools to help you comprehend any unfamiliar vocabulary (until 3:46).



Part 3 - Improve comprehension and pronunciation

Use the go-back-one-sentence button and the go-back-five-seconds button on the Woodpecker player to re-listen to chunks of text. Then, pause the video and repeat the chunks saying them aloud and copying Jade's pronunciation and intonation.



Part 4 - Writing and revision

Situation: A friend is coming to stay with you this weekend. Use the expressions from the lesson and Jade's video to write a list of 10 suggestions for places to visit, places to eat or drink and things to do in your town.

Part 5 - Improve listening and new expressions

Watch the second part of the video (from 3:46 to 7:05) with your mobile phone turned horizontally so that the text is not visible. You may need to touch the CC icon (choose 'none') to remove the subtitles.

Part 6 - Improve understanding

Watch the second part of the video again (from 3:56 to 7:05), this time turn your phone to portrait mode. Listen and read along with the text using the Woodpecker text assistant tools to help you comprehend any unfamiliar vocabulary.

Part 7 - Writing a dialogue

Write a dialogue of your own starting with the question 'What should we do tonight?'. Use the 'Would you mind if...?' and 'Would you mind +ing?' expressions in the dialogue, as well as the suggestion expressions from the lesson.

Part 8 - Review new vocabulary

When a word is touched in the Woodpecker video player, it is automatically added to your Woodpecker Word History, which you can find in the Main Menu. Review these words when you have finished watching the video. Use the 'Export' option in the Word History to export your vocabulary list to text, which can be added to your own vocabulary file or a Quizlet file, in order to continue working on the expressions.

Answer Key:

Task 1:

Expression		Definition
Season finale	1.	The final programme in a TV series
Episode	2.	One part of a season or series
A cliffhanger	3.	The ending of a TV episode or series that leaves the viewer in suspense
To binge-watch	4.	To watch more than 3 episodes of a TV show in one sitting
To premiere	5.	The first showing of a TV programme or film

Task 4: 1-c, 2-b, 3-a/e, 4-e, 5-d
