

Google Apps for Education - Removal of Branding

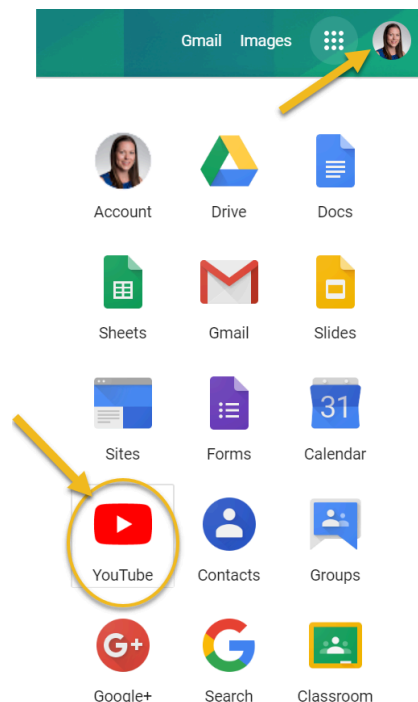
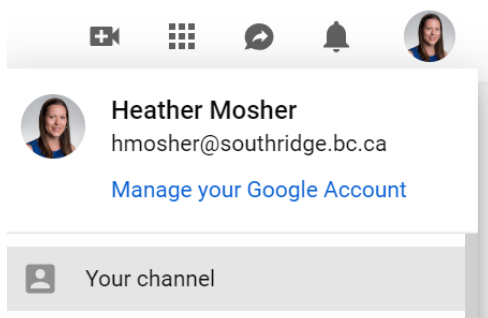
Yesterday Google sent out a notice regarding Branded Accounts and offered three solutions to remove your existing Branding. Peter Latta and myself have tested and found a fix that does not involve downloading or moving your YouTube content. We have noticed that a Branded Account was any account that had a name change; for instance, my name on my YouTube channel was MsHeatherMosher and now it reads Heather Mosher. In doing this, I still have retained my subscribers, all of my playlists, view counts and all of my videos. I did not have comments allowed on my videos, so I have not been able to test that.

Please know you that you didn't do anything on purpose to make your YouTube account a Brand account. Google has this blurb on one of their help pages:

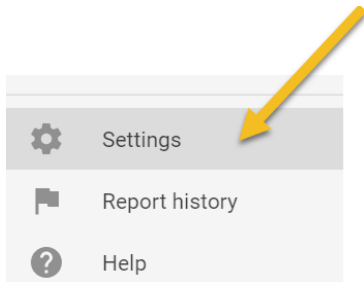
You may see new mentions of a "Brand Account" in your YouTube channel or see a new account in your account switcher. This is because your channel was connected to a Brand Account during a recent YouTube update. Learn more about [channels migrated to Brand Accounts](#).

Please follow these steps to un-Brand your account.

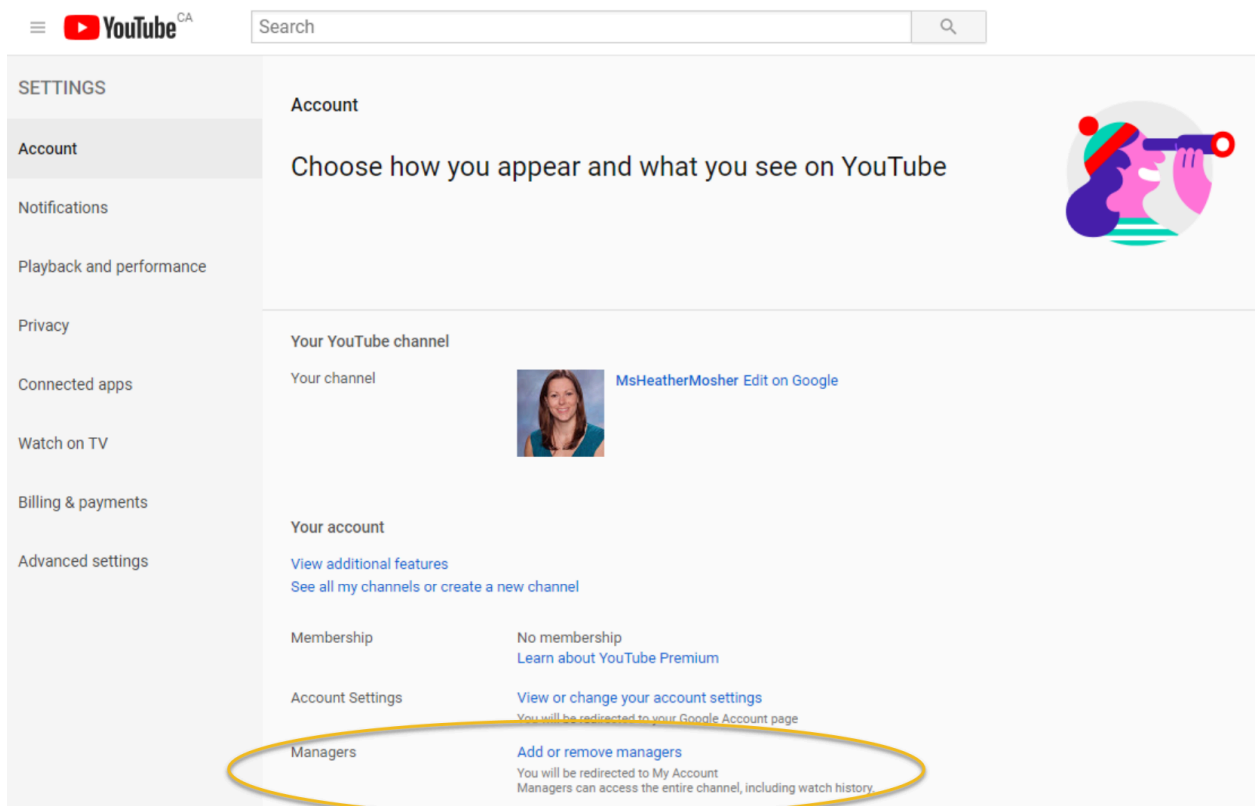
1. Log in to your Southridge Google account.
2. Go to YouTube once logged in.
3. View your channel by going to your Image for the drop down menu and select **Your channel**



4. Inside of your Channel, on the left hand side at the bottom of the menu, there is a Settings option:

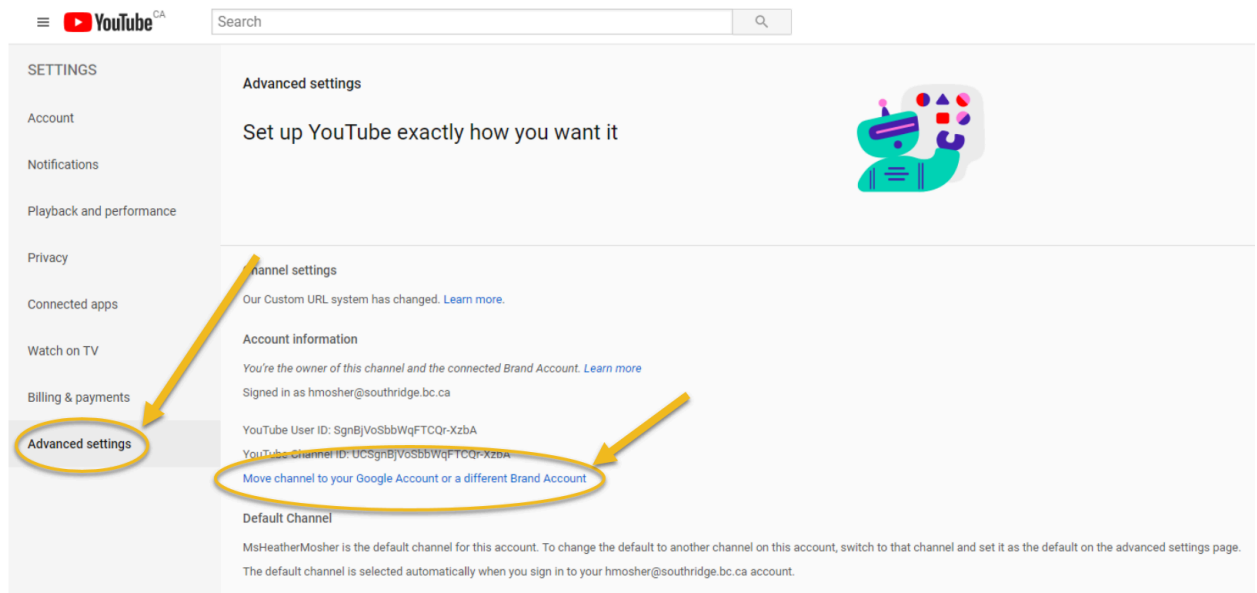


It will then show your **Account** details, the Managers and Branded Account details shows the extra detail for your YouTube Channel. This is the identifier for the problem, please don't click this.

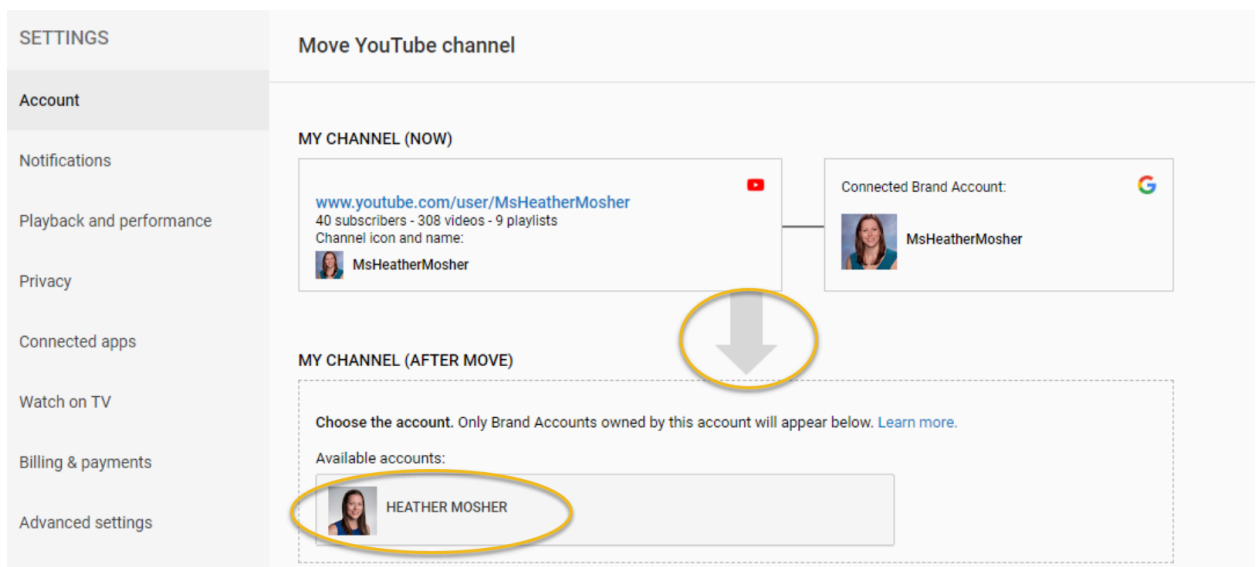


5. Please click on the left menu bar **Advanced Settings** and select **Move Channel to your Google Account or different Brand Account**. If you notice, below this hyperlink, my Default Channel shows that my channel is named

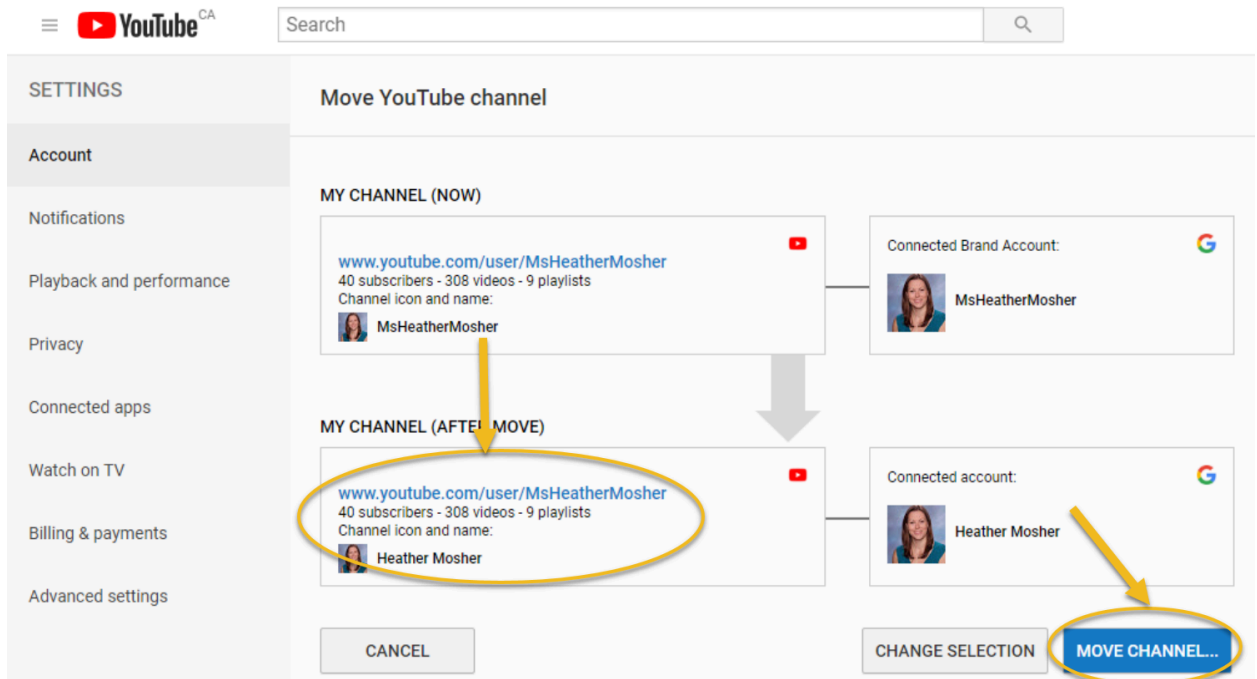
MsHeatherMosher which we have identified as part of this problem with the update to YouTube.



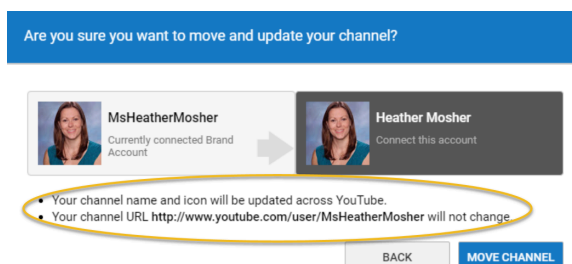
6. Once you click **Move Channel to your Google Account or a Different Brand Account** it will show you possible moves that you can make. You can see my current channel is linked to the YouTube created Branded Account (MsHeatherMosher) and shows my Available Accounts related it to my school's Google account where my name is listed.



7. Once you select your school's Google account you will get a confirmation box that shows that the subscribers, videos and playlist are retained. The Channel Icon and Name shows a change in the name. Click on **Move Channel...**



8. You then will get a confirmation box and it will also confirm that the URL for your channel will not change.

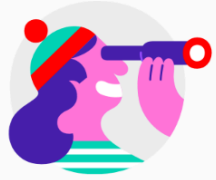


9. Now your account has been moved to just your Google account and it has removed the Branded Account. Now when you go to your **Account** details, the Managers option and Branded Account title has disappeared from my Account details.

Account

Choose how you appear and what you see on YouTube

Signed in as hmosher@southridge.bc.ca



Your YouTube channel

Your channel



Heather Mosher [Edit on Google](#)
hmosher@southridge.bc.ca

Your account

[View additional features](#)

[See all my channels or create a new channel](#)

Membership

No membership

[Learn about YouTube Premium](#)

Account Settings

[View or change your account settings](#)

You will be redirected to your Google Account page

