



34th IAFFE Annual Conference Guide & Program

**Feminist Economics and Transformative Change:
Ideas, Policies and Movements**

Virtual Conference: June 26–27, 2026

In-Person Conference: July 8–11, 2026

Universidad ICESI | Cali, Colombia





Photo by Flavio Carpio

TABLE OF CONTENTS

Welcome Words	4
Welcome from Local Host	5
Sponsors	6
Organizing Committees & Call for Papers	7
About the Organizers	10
Media & Communication	11
Section I: Virtual Conference	12
Virtual Conference General Information	13
Virtual Conference Schedule – June 26	15
Virtual Conference Schedule – June 27	20
Section II: In-Person Conference	26
Venue & Travel Information	27
Conference General Information	29
ICESI Campus Maps	31
Guidelines for Presentations	32
Conference General Schedule	34
Pre-Conference: Young Scholars (July 8)	36
Day 1: July 9, 2026	37
Opening Plenary (July 9, 9:00am)	37
Concurrent Sessions 1 (July 9, 11:15am)	41
Concurrent Sessions 2 (July 9, 1:45pm)	38
Concurrent Sessions 3 (July 9, 3:25pm)	44
Local Plenary & Opening Reception (July 9)	47
Day 2: July 10, 2026	49
New Members Breakfast & Presidential Address (July 10)	49
Concurrent Sessions 4 (July 10, 11am)	50
Concurrent Sessions 5 (July 10, 1:30pm)	53
Concurrent Sessions 6 (July 10, 3:10pm)	56
Concurrent Sessions 7 (July 10, 5:00pm)	60
Regional Network Events & Conference Dinner (July 10)	63
Day 3: July 11, 2026	64
Concurrent Sessions 8 (July 11, 9:15am)	64
Closing Plenary (July 11)	67
Side Events	68
Staff Support & Important Contacts	70

Last update: 29.06.2026

WELCOME WORDS

It is a great pleasure to welcome you to the 34th Annual IAFFE Conference, ***Feminist Economics and Transformative Change: Ideas, Policies and Movements***. This is a large conference with over 500 participants and it is our first ever bilingual one.

We gather at a moment of profound global challenges and profound possibilities. We are witnessing new democratic pressures, violence, widening inequalities, environmental crises and increased uncertainties about our collective future. But we are also witnessing remarkable acts of resistance, solidarity and transformation. Feminist economics has long helped us understand these two realities, both the structures that produce inequality and the possibilities for creating more just and equitable alternatives. It asks fundamental questions about how economies are organized, whose work is valued, whose voices are heard and whose well-being matters. It challenges dominant economic paradigms and offers alternative visions rooted in care, justice and collective flourishing.

This conference celebrates that transformative tradition by recognizing that ideas, policies and movements matter. Transformative change rarely emerges from a single source but rather is shaped through the interactions between scholarship and activism, institutions and communities and between local and global solidarities.

The themes that bring us together this week reflect the richness and diversity of feminist economic thought and practice. We will engage with questions of care, labour, sustainability, economic justice, public policy, identity and intersectionality, decolonial and postcolonial perspectives and the many ways in which social movements have challenged and reshaped economic and political systems. Most importantly, this conference is a space for dialogue. It is a space where scholars, activists, policymakers, practitioners, and students come together to exchange ideas, build connections and imagine new possibilities. The conversations that begin here have the potential to extend far beyond these few days contributing to the ongoing work of creating economies and societies that value dignity, equality, and care.

Thank you to all who have contributed to making this conference possible – our hosts at ICESI especially Natalia Escobar, Lina Buchely, Yuli Quinceno, and Odilia Mayorga, and our hosts from the Mesas de Economía Feminista, especially Ana Isabel Arenas Saavedra; all the IAFFE Staff especially Mayra, Paulina, Wendy and MaryBeth; both the program and paper selection committees and all the volunteers. Thank you too to all of you - presenters, participants and supporters.

Welcome to the conference. I wish you all an inspiring, engaging, and productive few days.



Sara Cantillon
Conference Chair

WELCOME FROM LOCAL HOST

If someone had told us a few years ago that we would be welcoming feminist economists, scholars, activists, students, and changemakers from around the world to our city, we probably would not have believed it. For many of us, who have been building this work from universities, social organizations, grassroots movements, and advocacy spaces across Colombia, hosting an event of this scale felt like a distant dream. Today, that dream has become a reality, and we could not be more honored to share it with you.

This guide was created to accompany you during your time in Cali, but it is also a reflection of the care, commitment, and excitement with which we have prepared for your arrival. Behind every detail is a team that has spent months working to make this conference possible. We are people whose lives and work have been shaped by the same questions that bring us together here: how to build more just economies, how to recognize and redistribute care, how to challenge inequality, and how to imagine and create different futures.

Bringing this conference to Cali means much more than hosting an academic event. It is a celebration of the work that feminist economists and activists have carried forward for decades across Latin America and beyond. It is also an opportunity to showcase the vibrant feminist organizing, research, and collective action that continues to flourish in Colombia. From Universidad Icesi, the Feminist Economics Networks of Colombia, and the many organizations and individuals who have contributed to this effort, we are delighted to welcome you.

We hope these days will be filled with meaningful conversations, new ideas, lasting connections, and moments of inspiration. Most of all, we hope you feel at home here—in our university, in our city, and within this community that is so excited to receive you.

Welcome to Cali. We are truly grateful that you are here.



Natalia Escobar Vaquiro

Local Host

SPONSORS

We are grateful to the following organizations and individuals whose generous support has made the 34th Annual Conference possible. Their contributions have funded travel grants for participants and supported the broader conference program.

Agence Française de Développement

Agencia Presidencial de Cooperación, APC-Colombia

Co-Impact

David Neigus

Fundación WWB

Gates Foundation

Hewlett Foundation

Mesas de Economía Feminista de Bogotá

Observatorio de Equidad de Mujeres (ICESI)

Open Society Foundations

Oxfam

Partners for a New Economy

Red Alas

Universidad Icesi

Wellspring Foundation

Interested in Sponsoring?

If you are interested in sponsoring IAFFE's future work, conferences, or travel grant programme, please reach out to us at psicius@iaffe.org.



Gates Foundation



OPEN SOCIETY
FOUNDATIONS



| RED | ALAS |



ORGANIZING COMMITTEES & CALL FOR PAPERS

Program Committee

Chairperson

Sara Cantillon

Members

Ana María Granda Moreno
Carolina Herrera
Lee Badgett
Luiza Nassif
Marcella Corsi
Natalia Escobar Vaquiro
Rebeca Gomez Betancourt
Sakiko Fukuda-Parr
Shaienne Osterreich
Smriti Rao
Valeria Esquivel

Paper Selection Committee

Chairperson

Sara Cantillon

Reviewers

Alessandra Mezzadri	Florence Muhanguzi	Lucilene Morandi	Sangita Dutta Gupta
Ana Laura Jaruf	Giulia Porino	Maria Castillo	Sara Cantillon
Anamary Linares	Giulia Zacchia	Mariel Gruppi	Sarah Gammage
Angela Opondoh	Hema Swaminathan	Massimo Cingolani	Silvia Di Eusanio
Arlette Covarrubias	Isabel Lambrecht	Mattia Mogetti	Smriti Rao
Carlo D'Ippoliti	Izaskun Zuazu	Minh Tam Bui	Vera Acheampong
Carolina Herrera-Cano	Jaya Jha	Mónica Grau-Sarabia	Wendy Sigle
Cheryl Doss	Jennifer Castañeda	Mónica Molina Barzola	Xiaopeng Pang
Daniela Miranda	Jennifer Twyman	Ndirangu Ngunjiri	Yazgi Genc
Débora Machado Nunes	Johanna Gómez Castro	Oduro Abena	
Diletta Taris	Juliana Nasciutti	Pato Laterra	
Emilia Millon	Karthik Manickam	Rana Hendy	



CALL FOR PAPERS

34th IAFFE Annual Conference | July 9-11, 2026
Universidad ICESI | Cali, Colombia

Feminist Economics and Transformative Change: Ideas, Policies and Movements

Feminist Economics critically examines the power relations that underpin economic life, exposing the ways in which gender inequalities and other forms of inequality are embedded and reproduced within economic structures and practices. Beyond critique, it also envisions and promotes alternative models of organizing economic and social life—models grounded in principles of justice, equity, and care. Initiatives that influence people’s everyday experiences, shape public policies, and transform social structures are thus central to both understanding and reshaping our collective realities. Across the globe, social movements have long served as powerful engines of thought and action, driving profound political, social, and economic change. Decolonial and postcolonial feminisms, struggles against gender-based violence, demands for bodily autonomy, and the promotion of care-centered economies have all contributed to a vibrant landscape of collective resistance and transformation. In a world marked by inequality the work of feminist scholars, activists, and policymakers stands as a testament to resilience, creativity, and transformative vision.

The 34th Annual IAFFE Conference seeks to recognize and celebrate ideas, movements, and policies which promote transformative change—that is, change that seeks to challenge and reshape the structures that produce inequality - from a feminist economics perspective. By foregrounding both grassroots initiatives and global feminist engagements, it reaffirms that feminist scholarship does more than interpret economic and social realities—it actively challenges and redefines them. In the face of persistent barriers to gender equality, the conference stands as a collective affirmation of our enduring commitment: to resist; to persist and to transform. The Conference invites scholars, activists, and policymakers to contribute work that advances feminist economic thought and practice. We particularly welcome submissions engaging with transformative initiatives which confront inequalities and address questions including:

- How do feminist economics approaches challenge dominant economic paradigms and offer alternative frameworks for theory and policy?
- How can feminist economics reimagine economic systems to prioritize care, justice, and collective well-being over growth and accumulation?
- In what ways have feminist movements and perspectives shaped global debates on economic justice, care, and sustainability?
- What specific methodologies can bridge feminist economic scholarship with grassroots activism?
- How can feminist economics address intersecting inequalities -such as those based on class, race, ethnicity, and sexuality - in the pursuit of equitable and inclusive economies?
- What lessons can be drawn from social movements that have successfully translated feminist economic principles into policy and institutional change?
- How can feminist perspectives contribute to reshaping public institutions, labour markets, and care systems to foster democracy and social solidarity?
- In a context of global crises—environmental, economic, and political—how can feminist economics guide sustainable and transformative responses?

We invite feminist scholars and practitioners from many disciplines to explore these questions together at the 2026 IAFFE Annual Conference. We also welcome submissions on other topics, drawing on theory, empirical work, policy proposals, and organizing efforts.

Local Committee

Members

Ana Isabel Arenas
Ana María Granda
Andrea Paola García
Angélica Morán
Diana Ávila
Lina Buchely
Lina Uribe
Natalia Escobar Váquiro
Odilia Mayorga
Sandra Balanta
Yuli Marcela Quiceno



Mesa de Economía Feminista de Bogotá



Observatorio para la Equidad de las Mujeres

ABOUT THE ORGANIZERS

IAFFE



[The International Association for Feminist Economics \(IAFFE\)](#) is a global community of academics, activists, policy theorists, and practitioners who share a common purpose: advancing gender-aware and inclusive economic research and policy analysis. Our aim is to foster gender equality and improve the well-being of all, particularly those facing the greatest socio-economic exclusion. The association's award-winning journal, *Feminist Economics*, opens new areas of economic inquiry, fosters critical exchanges and enlarges and enriches economic discourse. IAFFE is a membership-based organization that was founded following the 1990 meetings of the American Economics Association in Washington, D.C. Since then, it has grown to include 800 members from over 90 countries. IAFFE's influential network of scholars, activists, and advocates has defined and shaped feminist economics since the association's founding and has had a tangible impact on scholarship and policy.

[Instagram](#) | [Linkedin](#) | [Facebook](#) | [Youtube](#) | [Feminist Economics Podcast](#) | [FE Journal](#)

Observatorio para la Equidad de las Mujeres



The [Observatorio para la Equidad de las Mujeres](#) (*Women's Equity Observatory*) - OEM - is a research, measurement, and policy advocacy initiative launched in 2019 through a partnership between the WWB Colombia Foundation and Icesi University. Focused on southwestern Colombia, particularly Cali and the Valle del Cauca region, its work combines the production of subnational data on gender gaps (economic autonomy, care work, gender-based violence, sexual and reproductive health, political participation) with training processes for public officials and community leaders, as well as advocacy with both the public and private sectors to guide policies toward the well-being of women and diverse populations.

[Instagram](#) | [Linkedin](#) | [Facebook](#) | [Youtube](#) | oemcolombia@icesi.edu.co

Mesa de Economía Feminista



The [Mesa de Economía Feminista](#) (*Feminist Economics Roundtable*) was founded in 2011 as an initiative by six women interested in exploring feminist economics—an approach that places well-being and the sustainability of life at the center of economic analysis. In a context marked by advances such as Law 1413 of 2010 on the care economy and the incorporation of metrics on unpaid labor in Colombia, the Roundtable established itself as a pioneering initiative in the country, bringing together economics, feminism, and social justice. Since then, it has contributed to the production and dissemination of knowledge, capacity building, and advocacy on public policies related to care, work, and social protection, participating in debates and strategic processes within academia, the public sector, international cooperation, labor unions, and women's movements. Its work is characterized by a combination of analytical rigor, collective action, and a commitment to transforming gender inequalities from a feminist economics perspective.

[Instagram](#) | [X](#) | contacto@mesaeconomiafeminista.org

MEDIA & COMMUNICATION

Media & Communication

For updates and engagement around the **IAFFE 2026 Conference**, we invite you to connect with us through our official channels. Join our [WhatsApp community](#) for real-time updates and announcements, and follow us on our social media platforms, and those of our organizing partners.

Use the official hashtag **#IAFFE2026** when sharing your conference experience so we can see and amplify your posts.

Conference Communications & Networking

The [WhatsApp community](#) will serve as the primary space for event information during the conference, including important notices, schedule updates, and opportunities to engage with fellow attendees.

Participants are also encouraged to download the conference mobile app for access to the programme, speaker profiles, venue details, and other essential resources.

Sign up to become a conference buddy! The IAFFE Mentoring Program is coordinating a buddy system - pairing newer attendees with those who have more experience navigating the IAFFE Conference. Complete this form by June 24th to be paired up: <https://forms.gle/b95yM4iiTvXVz5ji7>

Social Media Channels

[Instagram](#) | [LinkedIn](#) | [Bluesky](#) | [Facebook](#)

Publications, Media & Content Platforms

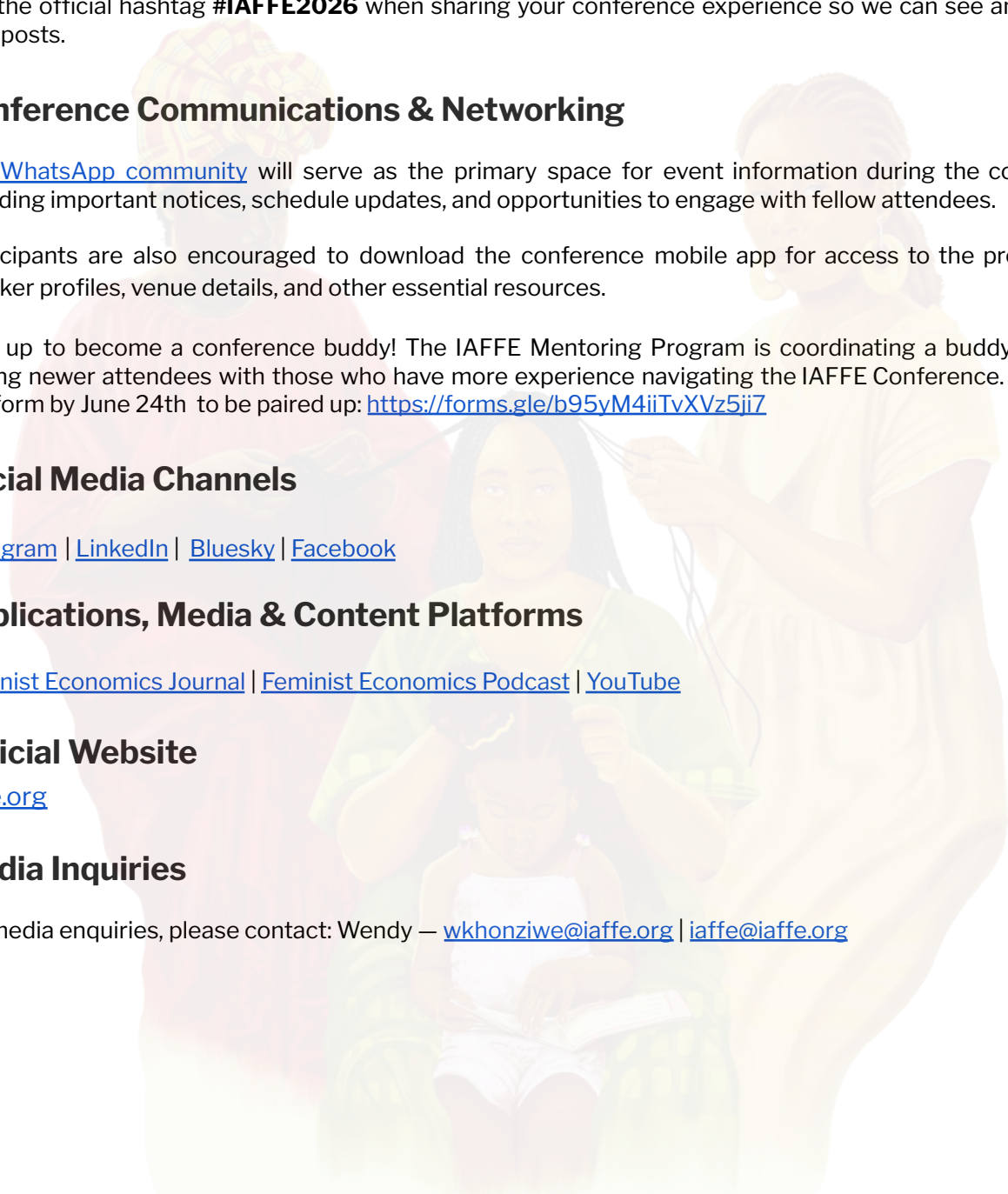
[Feminist Economics Journal](#) | [Feminist Economics Podcast](#) | [YouTube](#)

Official Website

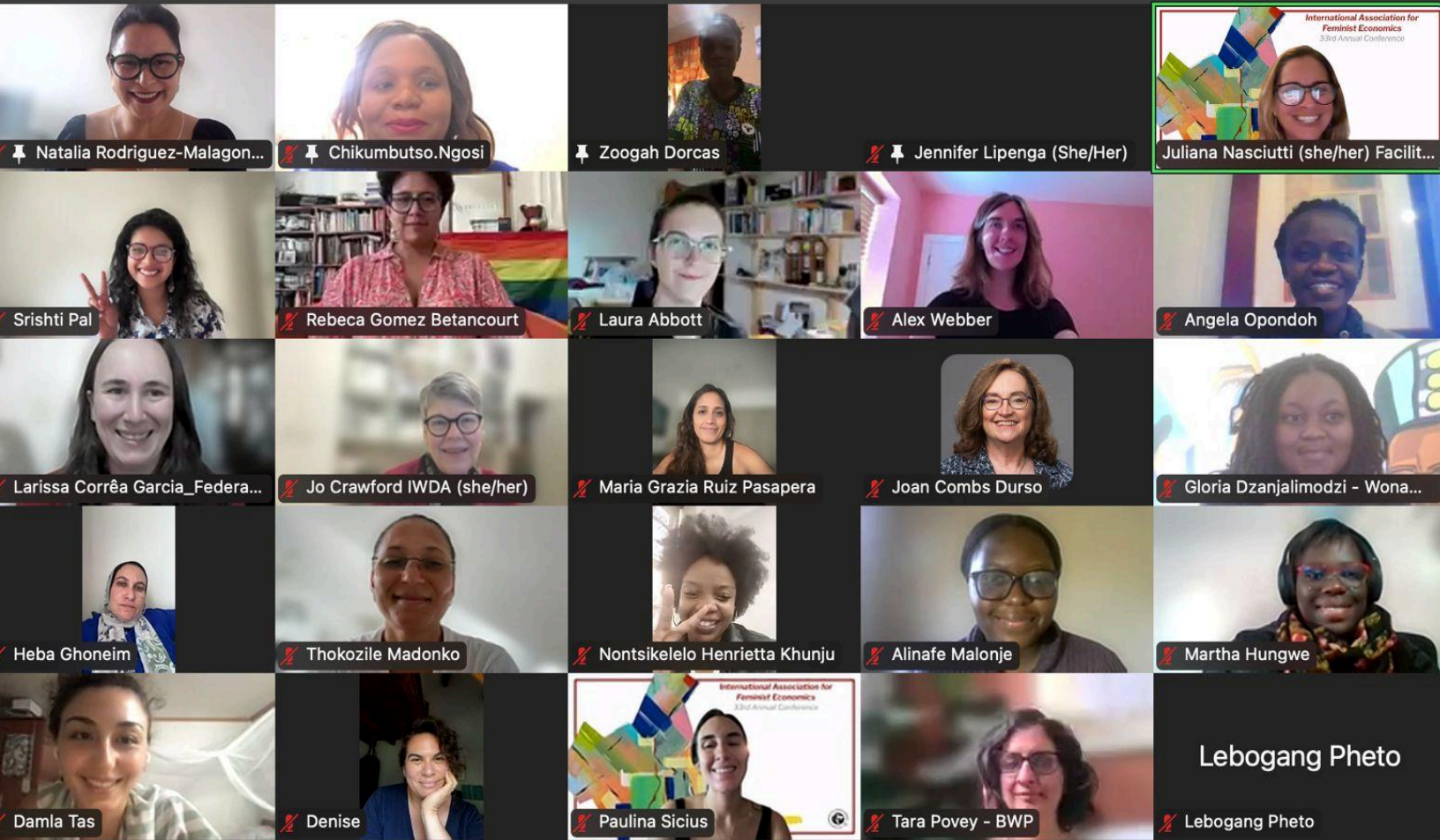
iaffe.org

Media Inquiries

For media enquiries, please contact: Wendy — wkhonziwe@iaffe.org | iaffe@iaffe.org



SECTION I



Virtual Conference

June 26-27, 2026

VIRTUAL CONFERENCE – GENERAL INFORMATION

IAFFE 2026 Virtual Conference

June 26–27, 2026 | 06:00 am – 09:00 pm (UTC) | 02:00 am – 17:00 pm (ET)

Both the in-person and the virtual conference will convene around the same theme - **Feminist Economics and Transformative Change: Ideas, Policies and Movements**. This theme encourages us to bridge feminist economic analysis to real life impact that drives us toward a more equal world. Led by Conference Chair Sara Cantillon and the IAFFE Conference Program Committee, the 2026 IAFFE Annual Conference invites scholars and practitioners to engage with how feminist economics is being practiced across the world, and build these learnings into their continued efforts.

All sessions take place on June 26-27, 2026, from 6:00am-21:00pm UTC each day. The virtual conference has been designed to offer rich insights and diverse perspectives from across the world. With its intentionally interactive format, it also encourages global relationship building, connection, and space for audience participants to contribute to collaborative thinking and creation.

[Review the full virtual conference guide here.](#)

Virtual Conference Highlights

- 40 sessions that include over 100 presenters showcasing their work in feminist economics from around the world, as well as opportunities to connect with a global community of scholars, practitioners, and advocates to build relationships and identify collaboration possibilities.
- Opening Day Plenary: Decolonization and Feminist Economics
Featured speakers: Alessadra Mezzadri, Bhumika Muchhala, Fernanda Rebelato, Jayati Ghosh, and Lyn Ossome; and moderated by Sakiko Fukuda-Parr
- Closing Day Plenary: Bridging Feminist Economics from Academia to Understanding & Addressing Polycrises
Featured speakers: Isabella Guerin, Martha Caravajalino, and Verónica Gago; moderated by Rebeca Gomez Betancourt; with closing remarks by Sara Cantillon
- Interactive sessions:
 - Discussion and activities hosted by each of IAFFE's regional groups - Africa, East and South-East Asia, Latin America and the Caribbean, and Middle East and North Africa
 - A workshop on mentoring and emerging scholars within the IAFFE community and beyond

Note that both plenaries will be recorded and retransmitted at two different times to accommodate different timezones (see full program for details).

Engage with Virtual Conference Participants

- Join the mock session on June 25th at 1pm UTC to test and play with virtual conference platforms and features here: <https://us02web.zoom.us/jc/88686315139>

- Join our [WhatsApp Community](#) to connect with other attendees, interact with prompts, and receive important updates.
- Add a post about yourself to the [Community Board](#) and interact with others'.

A Few Important Details

- If you need support, you can reach out to remote-support@iaffe.org or 'Ask Organizers Anything' on WhatsApp and/or Exordo.
- Sessions will take place primarily in two Zoom rooms, which are the following links:
 - [Zoom Room 1](#)
 - [Zoom Room 2](#)
 - **Those Zoom links are exclusive for registered participants, please do not share.**
- Regional Session Zoom links: :
 - [Africa Regional Network Session](#)
 - [East and Southeast Asia Regional Network Session](#)
 - [Latin America and Caribbean Regional Network Session](#)
 - [Middle East and North Africa Regional Network Session](#)
 - **Those Zoom links are open for sharing.**
- For full detailed information on the virtual conference platforms and sessions, carefully review the [virtual conference guide](#).

All in-person tickets grant access to the virtual conference.

Access and interact with the full program via Exordo:
<https://event.iaffe2026.exordo.com/>

VIRTUAL CONFERENCE PROGRAM – FRIDAY, 26 JUNE

ZOOM ROOM 1

ZOOM ROOM 2

**1:00am COT | 2:00am ET | 7:00am WEST |
9:00am EAT | 11:30am EAST | 3:00pm JST**

PANEL

Analysis of Feminist Economics and Intersecting Environmental Crises

Venue: [ZOOM ROOM 1](#)

Empowering Rohingya Refugee Communities: A Feminist Economics Approach to Health, Gender and Climate Resilience

» Mohammed Riaz

Landslides, Household Resilience and Time Allocation in India

» SILA MISHRA

Whose Adaptation? Care Burdens and Gendered Barriers in Zimbabwe's Climate-Social Protection Crisis

» Fortunate Sithole

PANEL

Gender Equality and Inclusion in Food, Land, and Water Systems by 2050: Projections and Solutions

Venue: [ZOOM ROOM 2](#)

Gendered vulnerabilities and equitable capacities in Food, Land, and Water Systems amid Polycrisis

» Ranjitha Puskur, Aayushi Malhotra, Anamika Ajay

Equitable governance and resource rights: Pathways to inclusive and resilient agrifood system-based livelihoods

» Marlène Elias, Babita Bohra, Tatiana Gumucio, Jordan Kyle, Everisto Mapedza, Dina Najjar, Ryan Nehring, Haley Zarembo

Looking ahead – Gender and inclusion in food, land and water systems in 2050

» Elizabeth Bryan, Hazel Malapit, Diana Lopez Avila, James Thurlow, Karl Pauw

**2:20am COT | 3:20am ET | 8:20am WEST |
10:20am EAT | 12:50pm EAST | 4:20pm JST**

PANEL

Care and Social Reproduction in Informal Economies

Venue: [ZOOM ROOM 1](#)

Co-Producing Feminist Economic Knowledge: Participatory Action Research with Women's Care and Informal-Work Collectives in Africa

» Christine Mukhongo

Beyond the Binary: Sex Work, Gender Fluidity, and Social Reproduction in Delhi NCR

» Smit Kumar

Care, Creativity, and Feminist Economic Agency in Nollywood: Gendered Labour in an Informal Cultural Economy

» NKECHI KANU

PANEL

Gendered Labor Realities

Venue: [ZOOM ROOM 2](#)

Care and domestic work: a trap or a tramp to women migrants' labour integration in the host country?

» Florencia Caro Sachetti

Occupational Segregation and Gendered Environmental Exposure

» Hema Swaminathan, Supriya Lakhtakia, Deepak Malghan, Vatsal Maurya, Joy Monteiro, Anish Sugathan

From 'Factory Girls' to 'Localized Flexible Laborers': What Has Neoliberalism Brought to Middle-Aged Chinese Rural Women?

» Luo Li

**3:40am COT | 4:40am ET | 9:40am WEST |
11:40am EAT | 2:10pm EAST | 5:40pm JST**

PANEL

Unpaid Care Work and Persisting Inequalities

Venue: [ZOOM ROOM 1](#)

Unpaid Care and Loss & Damage in Bangladesh
» Alex Bush, Saify Iqbal

Unpaid Care Work and Inequality: Feminist Economic Approaches for Fair Economies in Rural Tanzania
» Swalehe Manture, Allan Felician, Pendaeli Ibrahimu, Jully Minja, Sang'odi Gungui Lugesha, Dr Flora Myamba

Unveiling the economic value of unpaid care and domestic work across agrifood sectors in Bangladesh
» Valentina Costa, Rumbidzai Ndoro, Erdgin Mane, Amparo Palacios-Lopez, Ivette Contreras, Clara Park

PANEL

Exploring Vulnerabilities & Risk

Venue: [ZOOM ROOM 2](#)

When and where are women most at risk of harassment or assault in public transport systems? Bogotá as a Case Study
» Isabella Urbano Trujillo, Sofía García Durrer

Healthcare Vulnerability among Indian Women with Non-Communicable Diseases: A Multidimensional Approach
» Rishika Tomar, Priyandu M Bajpayee, Pratap Chandra Mohanty

Measuring and Understanding Child-Related Gender Inequality over the Life Course
» Katharina Kaeppel

**5:00am COT | 6:00am ET | 11:00am WEST |
1:00pm EAT | 3:30pm EAST | 7:00pm JST**

PANEL

Gendered Impacts of Environmental Labor & Energy

Venue: [ZOOM ROOM 1](#)

Navigating the green economy in South Africa: A perspective from Black women sustainable business owners
» Khanyisa Nomoyi

Recognition without Redistribution: Gendered Discourses and Environmental Labour in Indian Climate Policy
» Falguni Lalwani

Women of Multidimensionally Energy-Poor Households: Gendered Evidence Across Age-Groups in India
» Priyandu M Bajpayee, Pratap Chandra Mohanty

WORKSHOP

Africa, Capitalism, and Unequal Exchange in the 21st Century (IAFFE Africa Regional Group Session)

Venue: [REGISTER HERE TO RECEIVE A ZOOM LINK](#)

This session brings together African feminist economists and scholars to critically examine how global capitalism continues to shape unequal exchange in Africa today. We will explore the intersections of trade, finance, labor, and resource extraction, highlighting how structural inequalities reproduce dependency and exploitation across the continent. Speakers will share regional perspectives on how African feminist analysis reframes debates on economic justice, offering pathways toward equitable exchange, resilience, and transformative futures. By centering African voices, this session contributes to global feminist economics conversations while foregrounding the lived realities, demands, and proposals emerging from African scholars and activists.

*This is an open session, but registration is required to receive the Zoom link.

6:20am COT | 7:20am ET | 12:20pm WEST |
2:20pm EAT | 4:50pm EAST | 8:20pm JST

ROUNDTABLE

**Recognising, Re-claiming and Re-politicising
Diverse and Transformative Concepts of Care
in a Context of Poly-crisis and Backlash**

Venue: [ZOOM ROOM 1](#)

» [Deepa Chopra](#), [Ruth Diaz](#), [Mwanahamisi Singano](#), [Nelsi Ariza Muñoz](#), [Asmaa AbuMezied](#), [Patricia Mworozu](#)

PANEL

Economic Effects of Energy, Health, and Time Use

Venue: [ZOOM ROOM 2](#)

Bivariate Relative Poverty Line for Income and Time Poverty: Application to the Indian Time Use Survey
» Sneha Lamba, Franziska Dorn

Intersecting Inequalities: Mapping Energy Poverty and Women's Empowerment Across Indian States
» Debalina Chakravarty, Sangeeta Dutta Gupta, Indrani RoyChoudhury, Manjula Menon

The Structural Drivers of Social and Economic Effects of Trachomatous Trichiasis (TT) among Women in North Pokot, Kenya
» Victoria Akoth Ochwal

8:00am COT |
9:00am ET |
2:00pm WEST |
4:00pm EAT |
6:30pm EAST |
10:00pm JST

**Opening Plenary
Decolonization and Feminist Economics**

Panelists: Alessandra Mezzadri, Bhumika Muchhala, Fernanda Rebelato, Jayati Ghosh, Lyn Ossome | Moderated by Sakiko Fukuda-Parr.

Venue: [ZOOM ROOM 1](#)

This plenary responds to the theme of the conference on transformative change that “celebrates ideas, movements, and policies which promote transformative change—that is, change that seeks to challenge and reshape the structures that produce inequality—from a feminist economics perspective”. The discussion will give recognition to the feminists who continue the decolonial and post-colonial movements of the 20th century that not only challenged but sought to remake the world order. It will examine the continuation of this struggle against neocolonialism in the 21st century that is increasingly exploitative and extractive of women’s labor and of the Global South. Panelists will reflect on how feminist economics can contribute to overturning the coloniality of power structures that continue to underpin economic life and reproduce gender and North-South inequalities.



9:30am COT | 10:30am ET | 3:30pm WEST |
5:30pm EAT | 8:00pm EAST | 11:30pm JST

WORKSHOP

Mentoring & Young Scholars Session

Venue: [ZOOM ROOM 1](#)

PANEL

Agriculture and Ecological Economies

Venue: [ZOOM ROOM 2](#)

Explore feminist, equitable mentoring and contribute to tangible practices that can be incorporated into the IAFFE Mentoring Program and experience.

Differentiated Vulnerability and the Limits of Universal Agricultural Policy: An Intersectional Analysis of Women Farmers in Telangana, India
» Vani Prashamsa Aldas

Activist Roots of Feminist Ecological Economics
» Ellie Perkins

Delegated Transformation and Gendered Care: Insights from State-Led Agricultural Modernisation in Africa
» Antoinette Danebaï Lamana

10:50am COT | 11:50am ET | 4:50pm WEST | 6:50pm EAT | 9:20pm EAST | 00:50am JST

PANEL

Sustaining and Reproducing Life

Venue: [ZOOM ROOM 1](#)

La sostenibilidad y reproducción de las vidas a partir de los cuidados comunitarios. Córdoba, Argentina.
» Soledad Gonzalez, Victoria Fernández

Conflicto, territorio y sostenibilidad de la vida: hacia una economía política del cuidado efectiva y justa en Colombia
» Sofia Cortés Silva, Maria Castillo

Feeding Capital, Reproducing Life: Social reproduction approaches for food systems analysis
» Fiorella Picchioni, Barbora Adlerova

PANEL

Gender Norms and Discrimination at Work

Venue: [ZOOM ROOM 2](#)

Measuring Intersectional Discrimination in Higher Education: Insights from a University of Galway Student Survey
» Nata Duvvury, Aristides Vara-Horna, Pilar Luz Rodrigues

¿Desafiando las normas de género en el trabajo y el hogar? Mujeres en ocupaciones masculinizadas y la división del trabajo doméstico en Chile
» Julieta Palma, alessandra olivi, Antonia Asenjo

Is there a Triple Negative Effect on the Income of Immigrant Women in the Canadian Labour Market?
» Damilola Afolabi

12:10pm COT | 1:10pm ET | 6:10pm WEST | 8:10pm EAT | 10:40pm EAST | 2:10am JST

WORKSHOP

LAC Regional Session

Venue: [REGISTER HERE TO RECEIVE A ZOOM LINK](#)

Desafíos y coyuntura latinoamericana y caribeña: ¿Por qué necesitamos la economía feminista hoy?

» Moderated by Emi Millón and Maria Grazia

*This is an open session, but registration is required to receive the Zoom link.

PANEL

Gender Perspectives of Tax and Income

Venue: [ZOOM ROOM 2](#)

Pobreza de tiempo e ingresos en Argentina: un análisis desde la perspectiva de género
» Ayelén Mendive

Mapping the Gender Dimension in Taxation and Budgeting: A Cross-Country Study of Laws, Policies and Practices
» Hannelore Niesten, Luiza Ferraz di Ricco, Alena Sakhonchik

The Impact of Conditional Cash Transfers on Women's Fertility Choices and Girls' Outcomes
» Manisha Jain

**1:30pm COT | 2:30pm ET | 7:30pm WEST |
9:30pm EAT | 00:00am EAST | 3:30am JST**

PANEL

Law & Policy to Address Gender Related Issues

Venue: [ZOOM ROOM 1](#)

La política de ajuste fiscal sobre los subsectores de trabajos de cuidados en Mendoza, Argentina (2015-2024)
» Francisco Machin

When Laws Change: Evidence on Women's Employment and Earnings
» Janaki Shibu, Mariana Viollaz, Ana Maria Tribin, Luciana de la Flor

The Secretariat of Public Policies for Women (SPM) and the formulation of a transversal gender agenda in Brazil
» Lygia Sabbag Fares, Patricia Silva, Luísa Cardoso, Ana Luiza Matos de Oliveira

ROUNDTABLE

Acción colectiva, justicia climática y género

Venue: [ZOOM ROOM 2](#)

» Paola Vera, Ángel José Martínez Salinas, Erika Ceballos, Anthony Pérez

**2:50pm COT | 3:50pm ET | 8:50pm WEST |
10:50pm EAT | 01:20am EAST | 4:50am JST**

PANEL

Collectives and Cooperatives Applying Feminist Economic Practices

Venue: [ZOOM ROOM 1](#)

Feminist Economics in Practice: Consciousness, Collective Survival and Care
» Ohotuowo Ogbeche, Oluwafunmilayo Oni, Oluwatobiloba Ayodele

Economía solidaria desde los márgenes: estudio etnográfico de una cooperativa de mujeres indígenas en el sur de Chile
» Daniela Miranda

Women-led organisations as sites of social provisioning: feminist economic evidence from India and Uganda
» Aditi Padiyar, Winnie Watera

PANEL

Reproductive Realities and Impact of Care Investments

Venue: [ZOOM ROOM 2](#)

Reproductive Autonomy and Fertility Outcomes in Colombia
» Johanna A. Cervantes G.

Engendering Macroeconomic Framework with Fertility Choices and Investment in Care
» Sanchari Choudhury, Elissa Braunstein

Efectos de la maternidad sobre los salarios de las mujeres en Brasil: un análisis pre, durante y post-pandemia
» Fernanda Josefina Silva de Sá

VIRTUAL CONFERENCE PROGRAM – SATURDAY, 27 JUNE

ZOOM ROOM 1

ZOOM ROOM 2

**12:00am COT |
1:00am ET |
6:00am WEST |
8:00am EAT |
10:30am EAST |
2:00pm JST**

**Recording: Opening Plenary
Decolonization and Feminist Economics**

Retransmission for participants in other timezones.

Venue: [ZOOMROOM1](#)

**1:00am COT | 2:00am ET | 7:00am WEST |
9:00am EAT | 11:30am EAST | 3:00pm JST**

WORKSHOP

IAFFE in East and South-East Asia (IAFFE East & Southeast Asia Regional Group Session)

Venue: [REGISTER HERE TO RECEIVE A ZOOM LINK](#)

This session will provide an overview of the activities of IAFFE members in the East and South-East Asia region before discussing the formation of the IAFFE Regional Network for the region and how its activities can best serve IAFFE members and feminist economists working on or in East and South-East Asia.

*This is an open session, but registration is required to receive the Zoom link.

PANEL

Gendered Impact of Government and Institution Practices and Procedures

Venue: [ZOOM ROOM 2](#)

By Words and Deeds: The Persistence of Intergenerational Transmission in Gender Norms
» Yingjin Liu

Austerity and Gender Gaps in the Labour Market
» Nerina Guri

Gender-Responsive Intergovernmental Transfers in Local Governance
» Shubhalaxmi Sagare

**2:20am COT | 3:20am ET | 8:20am WEST |
10:20am EAT | 12:50pm EAST | 4:20pm JST**

PANEL

Feminist Approaches and Women's Realities in Tech

Venue: [ZOOM ROOM 1](#)

Feminist Labour Organising in India's Platform Economy
» Prakriti Sharma, Vidhi Singh, Sharati Roy

Women Engineers in China's AI Industry and 'Rush-Driven Economy'
» YAJIAO LI

PANEL

Feminist Theory, Methods & Design

Venue: [ZOOM ROOM 2](#)

Egyptian Feminist Critiques Of Neoliberalism
» Asmaa Elmalky

Queering Economic Methods: A Critical Analysis of Categories in Data Collection Methods
» Srishti Pal

Beyond Representation: Feminist Economics, Financial Institutions, and Inclusive Market Design
» Marija Risteska

Barriers to Women's Digital Entrepreneurship: The Economic Consequences of Technology-Facilitated Gender Based Violence on Social Media
» Mwikali Muoka

3:40am COT | 4:40am ET | 9:40am WEST | 11:40am EAT | 2:10pm EAST | 5:40pm JST

PANEL

The Potential to Build Back with a Feminist Approach

Venue: [ZOOM ROOM 1](#)

Class Politics and Transformative Social Policy: Potentials for Social Reformulation and Emancipation in Sudan
» Seraf Sidig

Embodied Relations of Care and Resistance: Gesturing Toward Feminist Transformations in European Climate Camps
» Henna-Elise Ventovirta

Translating Feminist Economic Principles into the Labor and Care Regimes: Lessons from Post-War Kosovo
» Venera Demukaj, Dita Dobranja

PANEL

Public Participation, Organizing & Bargaining

Venue: [ZOOM ROOM 2](#)

Feminist Perspectives Shaping Economic Justice Through Public Procurement: The Case of Women-Owned Businesses in Tanzania
» [Lamlath Katunzi](#), [Maria Mshiu](#), [Elieth Samson](#), [Samson Mnyawami](#), [Dr Flora Myamba](#)

Collective bargaining and gender equality: an exploration on Italian agreements
» Armanda Cetrulo, Valeria Cirillo, Eustachio Ferrulli

Conditional Participation and Local Voices in Municipality-Led Policy Spaces: Women Vendors in Ankara (Turkiye)
» Ayla Deniz, Rumeysa Siniri

5:00am COT | 6:00am ET | 11:00am WEST | 1:00pm EAT | 3:30pm EAST | 7:00pm JST

PANEL

Feminist Tactics of Support, Empowerment and Resistance

Venue: [ZOOM ROOM 1](#)

From Women's Economic Empowerment to 'Kayan': Conceptualising Intrinsic Empowerment Outcomes
» Maha Gaad

Friendship as resource: women social networks and strategic life choices in rural Pakistan
» Haris Gazdar, Syeda Warda Riaz, Hussain Mallah, Mariam Ibrahim

From Invisible to Indispensable: Queer Care and Collective Resistance in Vienna
» Filipa Reis, Daria Agarkova

PANEL

Feminist Perspectives on Monetary Policy and its Gendered Effects

Venue: [ZOOM ROOM 2](#)

Monetary policy and gendered employment outcomes in developing countries
» Milena Dehn

Monetary Policy Transmission to Consumption: Inequalities by Gender and Race
» Aina Puig

6:20am COT | 7:20am ET | 12:20pm WEST |
2:20pm EAT | 4:50pm EAST | 8:20pm JST

ROUNDTABLE

Care at the Margins: Eldercare, Disability, and Social Reproduction in the Global South

Venue: [ZOOM ROOM 1](#)

» Amar Nijhawan, Elena Moore, Doris Boateng, Vanessa Rojas, Peter Lloyd-Sherlock

PANEL

The Future of Feminist Quantitative Methods

Venue: [ZOOM ROOM 2](#)

When the Plural of Anecdote Is Evidence: Feminist Standpoint Theory and Demographic Research
» Wendy Sigle

Evidence-Based Policy: When Social Justice Meets the Identification Police
» Naomi Friedman Sokuler

A More Feminist Econometrics: Are Bayesian Approaches the Answer?
» Cory Nicholls, Jesse Philbin

Caught in an Empirical Trap? Rethinking Methods and the Methodological Identity of Feminist Economic
» Lorena Valle Cuéllar

8:00am COT |
9:00am ET |
2:00pm WEST |
4:00pm EAT |
6:30pm EAST |
10:00pm JST

Venue: [ZOOM ROOM 1](#)

Closing Plenary

Bridging Feminist Economics from Academia to Understanding & Addressing Polycrises

Panelists: Isabella Guerin, Martha Caravajalino, and Verónica Gago | Moderated by Rebeca Gomez Betancourt. Closing remarks by Sara Cantillon.

As the conference showcases academic papers and discussions around Feminist Economic theories, studies, and analyses, this plenary will ground the audience in how feminist economic thought is impacting ideas and policies, and its role as an effective tool for movements. The discussion will hone in on present day polycrises and how these are being understood from a feminist economics standpoint, addressed from above by government entities, and what solutions are emerging from below via grassroots movements. Panelists include representatives from government and activist movements; and feminist economists who strategically collaborate with practitioners - ultimately exploring how feminist economic thinking and analysis in academia is bridging with activism and real world application, and how this connection can be strengthened into the future.



**9:30am COT | 10:30am ET | 3:30pm WEST |
5:30pm EAT | 8:00pm EAST | 11:30pm JST**

WORKSHOP

Impact of the War on Women's Lives and Agency in the Middle East (IAFFE MENA Regional Group Session)

Venue: [REGISTER HERE TO RECEIVE A ZOOM LINK](#)

The panel examines the ways in which war influences and shapes women's lives and agency in the Middle East.

Impact Of the War on Women's Lives and Agency in the Occupied Palestinian Territory: Gendered Reproductive Genocide, And the Feminist Political Economy of War
» Hadeel Qazzaz

The Care Burden of War: Women and Survival in Lebanon
» Lina Abou-Habib

Women, War, and Public Space
» Shahla Talebi

What Prospects for Iranian Women Post-War?
» Valentine M. Moghadam

*This is an open session, but registration is required to receive the Zoom link.

PANEL

Evolving through Feminist Perspectives & Women's Realities

Venue: [ZOOM ROOM 2](#)

Transformative Pathways to Sustainable Development: The Nexus of Gender Inequality, Globalization, and Institutional Governance
» najiba murar, Fatma Türüç Seraj

Reimagining Economies Through Feminist Economics: Centering Care, Justice And Collective Well-Being
» MARTHA MATIKU, Dorice Tungu, Silla Mnyawami, Godlisten Mghase, Ruth Makolobela

Women in the Core of Heterodox Economics: A Bibliometric Analysis
» Yasmine Mendonça, Andrea Cabello

**10:50am COT | 11:50am ET | 4:50pm WEST |
6:50pm EAT | 9:20pm EAST | 00:50am JST**

PANEL

The Impact of Debt, Austerity & Pension

Venue: [ZOOM ROOM 1](#)

From Care to Control: Modeling the Structural Transformation of Social Reproduction Under Austerity
» Nejlá Routsong

Old-Age Support in India: The Role of Child Composition and Pension Systems
» Manisha Jain

Household Debt and Social Reproduction in the United States
» Jacqueline Morse

PANEL

Women's Employment, Income and Wages

Venue: [ZOOM ROOM 2](#)

The Double-Edged Sword: ICT Capital and Women's Employment in the U.S.
» Ozge Ozay, Armagan Gezici

Gender And Racial Wage Gap In The Brazilian Public Sector: Evidence Of 'sticky Floor' And 'glass Ceiling'
» Melissa Silva, Danielle Carusi Machado, Luis Felipe Contreras

Glass ceiling or Sticky floor? Examining the gender wage differential across the earnings distribution in Ethiopia, 2005-2021
» Fenet Jima Bedaso

**12:10pm COT | 1:10pm ET | 6:10pm WEST |
8:10pm EAT | 10:40pm EAST | 2:10am JST**

PANEL

Documenting Transformative Change: on the Progress in preserving IAFFE's past via the IAFFE Archives

Venue: [ZOOM ROOM 1](#)

Archiving Digital Materials in IAFFE
» Edith Kuiper, Heidi Hartmann, Thuy Do

Oral History and the Gendered Archives: Memory, Testimony and Women's History
» GUILHERME NUNES

Celebrating transformative change through our digital archives: why it matters and who should get involved?
» Francisca Owusu, Wendy Khonziwe

ROUNDTABLE

Presentación de libro Tributación y Género

Venue: [ZOOM ROOM 2](#)

» Noelia Méndez Santolaria, Alejandro Juarez, Maureen Perez, Agustina Odonnell, Alejandro Mencías, Verónica Grondona, Corina Rodriguez Enriquez

**1:30pm COT | 2:30pm ET | 7:30pm WEST |
9:30pm EAT | 00:00am EAST | 3:30am JST**

PANEL

Care Infrastructure and Measurement

Venue: [ZOOM ROOM 1](#)

The Care Board: A Case Study of Care-Centered Economic Measurement in the U.S.
» Lucie Prewitt

Childcare as Care Infrastructure: Comparing Universal Pre-K and Subsidy Expansions for Women's Economic Security in the U.S.
» Laura Lozano

El cuidado infantil en Guatemala: género, desigualdad y el diamante del bienestar
» Ana Luiza Matos de Oliveira, Magali Alloatti

PANEL

Calculations and Analyses of Care

Venue: [ZOOM ROOM 2](#)

Calculadora del cuidado
» Ariela Micha, Nuria Yabkowski, Francisca Pereyra

Care Work as Public Infrastructure: Feminised Community Labour and Social Reproduction in Urban Health Systems in India
» Rajshree Bedamatta

Ciclo de vida, cuidados y desigualdades de género en el Perú: evidencia comparada de las ENUT 2010 y 2024
» Jackeline Velazco

**2:50pm COT | 3:50pm ET | 8:50pm WEST |
10:50pm EAT | 01:20am EAST | 4:50am JST**

PANEL

Time Use, and Labor Recognition in Paid and Unpaid Work

Venue: [ZOOM ROOM 1](#)

Brechas en el reconocimiento laboral de la economía del cuidado: Evidencia desde Durán, Ecuador
» Mónica Molina Barzola, Odette Perez, Alexandra Yépez Vera

PANEL

Economic Factors that Address or Exacerbate Gender-based Violence and Other Vulnerabilities

Venue: [ZOOM ROOM 2](#)

The Geography of Megaprojects and Gendered Violence: The Case of the Tren Maya in Mexico
» Miriam Berretta

Mediciones del uso del tiempo en Argentina: guía práctica para usuarios

» Analía Calero, Cecilia Velázquez

Gendered labor rationing and employment gaps: structural constraints and selection in the Mexican labor market

» Violeta Rodríguez

Taking action against gender-based violence and poverty: Systems change through a basic income guarantee

» Haily MacDonald, Desiree Salis, Katie Woodcroft

¿Qué nos enseñan las mujeres afectadas por los fenómenos climáticos sobre la economía feminista?

» Beatriz Schwenck

8:00pm COT |
9:00pm ET |
2:00am WEST |
4:00am EAT |
6:30am EAST |
10:00am JST

Venue: [ZOOM ROOM 1](#)

Recording: Closing Plenary

Bridging Feminist Economics from Academia to Understanding & Addressing Polycrises

Retransmission for participants in other timezones.

SECTION II



In-Person Conference

July 8–11, 2026 | Universidad ICESI | Cali, Colombia

VENUE & TRAVEL INFORMATION

Cali, Colombia

Cali is Colombia's vibrant third-largest city, globally celebrated as the "Capital of Salsa" due to its legendary dance schools, pulsating nightlife, and rich Afro-Colombian cultural heritage. Nestled in the warm Valle del Cauca region, the city offers a tropical climate and unique local delicacies. To discover what makes Cali such a unique destination, take a look at the [local guide](#) Icesi has created, designed to help you experience the city as a local.

Weather

Cali features a warm, tropical climate year-round, with average daily temperatures hovering around 24°C (75°F), daytime highs peaking at 30°C (86°F), and refreshing evening breezes coming off the Andes mountains. Stick to lightweight, breathable fabrics. The equatorial sun is incredibly strong. We recommend using UV-blocking sunglasses, and high-SPF sunscreen during the day. Due to El Niño conditions in 2026, temperatures may run warmer than usual. Please stay hydrated. Water bottles are a must; there are drinking fountains throughout campus.

As the famous Brisas de Cali (mountain breezes) sweep through the city after 6:00 PM, temperatures drop to a comfortable 19°C (66°F). Bring a light jacket, cardigan, or long-sleeve shirt for outdoor dining and nightlife.

Currency

The official currency is the Colombian Peso (COP), denoted by the "\$" sign. Avoid exchanging large amounts at the airport or in hotels, as they offer poor rates. Never exchange currency with unauthorized individuals on the street to avoid counterfeit scams. The safest places with competitive rates are authorized, secure exchange booths located inside major shopping malls. ATMs are often the most economical route. Use ATMs located inside a bank branch or shopping mall during the day for optimal safety.

While debit and credit cards (Visa and Mastercard) are widely accepted in Cali's major hotels, restaurants, and shopping centers, Colombia remains fundamentally a cash-reliant economy. Smaller street vendors, local cafes, public buses, and traditional taxis deal strictly in physical cash. When using your card at a register, servers or cashiers will typically ask you if the card is "crédito" (credit) or "débito" (debit). If you choose credit, they will ask how many installments ("cuotas") you want to split the payment into; always reply "una" (one) so your home bank processes it as a single standard transaction without charging local financing interest.

Vaccines

Colombia has no mandatory vaccination requirements for general entry, unless you are arriving from a high-risk yellow fever country. If you are coming from **Brazil, Angola, Uganda and Democratic Republic of the Congo**, or transiting in one of those countries for more than 12 hours, you must present an International Certificate of Vaccination against Yellow Fever. **Always double-check the latest vaccination requirements to enter Colombia.**

Getting to Cali

Alfonso Bonilla Aragón International Airport (CLO) is the main airport serving Cali. Taxis and app-based services (Uber, DiDi, Cabify) are available at the airport. If you want to book a taxi, **we also recommend reaching out to Anderson Suárez +57 310 398 2449 via Whatsapp to book a taxi in advance.**

A ride from Alfonso Bonilla Aragón International Airport (CLO) to the center of Cali takes 60-90 minutes depending on traffic. Traffic in Cali is extremely heavy, especially at peak hours.

- Official Airport Taxi (White): Expect to pay a fixed flat rate of 90,000 to 110,000 COP (\$25 to \$32 USD). You can purchase a voucher with the exact price at the official taxi desk inside the terminal.
- Uber: A standard ride typically costs between 50,000 and 70,000 COP (\$14 to \$20 USD), though dynamic pricing applies during rush hour or heavy rain.

Safety Check: If using Uber or another rideshare service, always check that the vehicle's license plate, make, and model exactly match the details listed in your app before entering. If taking a taxi, never accept a ride from an unbadged solicitor inside the terminal; only use the authorized white airport cabs waiting directly outside the arrivals gate.

Transiting in Bogotá

If you are connecting through El Dorado International Airport (BOG) in Bogotá, remember that the city sits at **2,640 meters (8,660 feet) above sea level**. Because the air is thinner at this altitude, your body gets less oxygen with each breath. Even if you are just walking between gates, you might feel:

- A bit dizzy or lightheaded
- Short of breath more quickly than usual
- A slight headache or sudden fatigue

The Golden Rule: Do not run for your connection! Give yourself plenty of time to walk at a relaxed pace. Take deep breaths, stay hydrated by sipping water, and let the airport escalators and moving walkways do the heavy lifting.

Mandatory Immigration Form

All passengers entering or leaving Colombia must complete the [mandatory Check-Mig form](#) online. This digital registration **must be filled out between 72 hours and 1 hour prior to your flight**. The process is completely free, and you will need to present the confirmation email (or QR code) to your airline before boarding.

Recommended Hotels

Cali suffers from severe, daily traffic gridlock, with major bottlenecks paralyzing the city's main arteries during the morning, lunch, and evening rush hours. Because commuting from the northern or central parts of the city to the southern zone can easily take over an hour in peak traffic, it is highly recommended to stay in a neighborhood close to Universidad Icesi. The best options are Pance, Ciudad Jardín, Valle del Lili, Ciudad Pacifica, Bochalema y El Caney. The average cost for Uber coming from those neighbourhoods will be from 3 to 5 dollars each way.

We have partnered with some hotels who offered group rates for all participants for the IAFFE Conference. Check the list of hotels here: <https://www.iaffe.org/travel-logistics> and look at the column "how to book" for information on how to reach them out.

CONFERENCE GENERAL INFORMATION

Universidad ICESI

Icesi is a private university that was founded in 1979 by local business leaders and academics, renowned for its focus on innovation, entrepreneurship, and social responsibility. Since its beginning, the university has been systematic in pursuing its mission: learning, discovery, knowledge creation and taking action to create a better world. Universidad Icesi educates professionals in programs of the following nature: 30 undergraduate, 2 doctorates, 35 master, 24 medical-surgical specialization and 17 specialization, all of which are accredited by the National Ministry of Education. To learn more about Icesi visit <https://www.icesi.edu.co/>

Getting to ICESI

Getting to Universidad Icesi, located in the Pance neighborhood of southern Cali, requires careful planning due to heavy morning and evening rush-hour bottlenecks along Avenida Cañasgordas.

If using public transit, the most efficient route is to take the MIO bus system to the Universidades Station, then transfer to a feeder bus such as the A11 or A14A, which stop right outside the campus gate. When using public transport, participants should remain cautious, stay aware of their surroundings, and avoid unfamiliar areas. Whenever possible, opt to share a ride and avoid traveling alone. We strongly advise against using public transportation as journey times can be much longer.

For maximum safety and convenience, consider using apps like Uber or Cabify. Be sure to ask your driver to drop you off at the Torre del Reloj entrance on Cañasgordas Avenue, which is closer to the registration desk.

Address: Cl. 18 #122-135, Barrio Pance, Cali, Valle del Cauca, Colombia

Access to the Conference

Please use the Torre del Reloj entrance on Cañasgordas Avenue, as it provides the most convenient access to the registration desk. All participants must collect their badges before entering the conference area. Please note that all presenters, participants, and visitors must be registered for the in-person conference. Registration is open until June 18th and can be completed at: <https://iaffe2026.exordo.com/registration>.

Information Desk

An information desk will be set up at Plazoleta Saman on the afternoon of Wednesday, July 8th, as well as on the mornings of Thursday and Friday, July 9th and 10th. Additionally, volunteers will be around the campus, feel free to ask them for directions or any information you may need.

Registration

Registration Desk Hours @ Plazoleta Saman:

- Wednesday, July 8: 1:00pm – 6:00pm | Universidad ICESI
- Thursday, July 9: 8:00am – 12:00pm | Universidad ICESI
- Friday, July 10: 8:00am – 12:00pm | Universidad ICESI

Lunch and Coffee Breaks

Lunch will be served on July 9th and 10th at the Plazoleta, near Building D. Lunch is included in the conference registration fee. Please check the conference schedule for specific serving times.

Coffee and tea will be provided during the breaks on all three days of the conference at the corridors of Building D (1st and 2nd floors).

Internet Access

Free Wi-Fi is available at Icesi University. Please connect to the open network "Red Publica" to access the internet.

Study Rooms

Several rooms will be available for co-working, presentation preparation, small meetings, and calls. Study rooms 101 E2, 101 E3, 101 E4, 101 E5, and 101 E6 will be open and accessible for your convenience.

Childcare & Nursing Room

There will be a nursing room available close to the Saman entrance. Please ask the volunteers for guidance.

We will be happy to provide childcare for those who need it, subject to demand. Please fill out this [form](#) to let us know whether having childcare available would be helpful for you.

Art & Crafts Fair

During the conference, ICESI will host a selection of Colombian artisans showcasing their work. It's the perfect chance to purchase unique, locally made crafts directly from the artists and their associations. Visit the fair to explore and support local talent.

Translation

This is the first time IAFFE will hold a full bilingual conference. Translation will be provided not only for the plenaries, but also for all concurrent sessions, for both the virtual and in-person formats. The automated translation platform [Wordly](#) will be tested, and captions in both English and Spanish will be available in all rooms and sessions.

We need your help:

In order to make the most of the automated translation system, a glossary of specific terms can be provided to enhance translation quality. We kindly ask that you upload a glossary of terms for your presentation in English <> Spanish. These contributions will be consolidated into a larger IAFFE glossary, which will help train the platform, improve translation accuracy, and benefit all presentations.

To upload your glossary, please log into ExOrdo (<https://iaffe2026.exordo.com>) - it is only possible to upload it through the web browser, as it doesn't work on the app. On your dashboard, locate the "My Presentations" card and click "Upload presentation material." There, you may upload your biography, presentation (if applicable), and glossary by July 2nd, 2026.

ICESI CAMPUS MAPS



GUIDELINES FOR PRESENTATIONS

Paper Presentations

Session format:

- All sessions have 90 minutes. There will be a volunteer in each room to support your participation. Please arrive at the designated room 10 minutes prior to the beginning of the session.
- Each presentation is allocated 15 minutes, followed by Q&A. Please be mindful and stick to your time to not hinder other presentations.
- Below in the program, for each presentation the name of the presenter is underlined.
- All sessions will have automated translation English <> Spanish as subtitles on a screen.
- Ensure your paper is scheduled within one of the sessions. If not, please reach out immediately.

Slides:

- If you have slides you should **upload them no later than July 2, 2026**. No slides will be accepted after this date. Please bring your slides in a USB stick when possible for safekeeping.
- **To upload your slides, please log in to the platform (<https://iaffe2026.exordo.com>) - it is only possible to upload it through the web browser, it doesn't work on the app - on your dashboard you will see a “My Presentations” card, click on “Upload presentation materials” and follow the instructions. You may also provide a small bio.**

Roundtables

Session format:

- All sessions have 90 minutes. There will be a volunteer in each room to support your participation. Please arrive at the designated room 10 minutes prior to the beginning of the session.
- All sessions will have automated translation English <> Spanish as subtitles on a screen.
- Ensure all speakers are listed in your session details.

Slides:

- If you have slides you should upload them no later than July 2, 2026. No slides will be accepted after this date. Please bring your slides in a USB stick when possible for safekeeping.
- To upload your slides, please log in to the platform, on your dashboard you will see a “My Presentations” card, click on “Upload presentation materials” and follow the instructions. You may also provide a small bio.

Hybrid Sessions

For panel/roundtables accepted for a hybrid presentation, it should be scheduled in a room that specifies Hybrid (check at the program below). If your panel or roundtable was not placed in a hybrid session, please reach out to us. More information on how to access the hybrid sessions will be shared closer to the event.

Poster Presentations

- Posters will be printed by IAFFE and will be showcased during the whole conference at the Library Hall, from 9:00 am to 9:00 pm.
- There is a session schedule for presentation of the posters to a Jury on July 10th from 15:10 to 16:40, local time. All presenters must be available for this session and be prepared for a brief 3–4 minute presentation, followed by a short Q&A. Please arrive at the Library Hall 10 minutes prior to the beginning of the session.
- A poster award session is scheduled for July 11, 2026 at 11:15 am, before the closing plenary session.

Poster upload:

- Please upload your poster no later than July 2nd, 2026. No posters will be accepted after this date. Do not bring printed posters, IAFFE will print and display them at Icesi Library Hall.
- To upload your poster, please log in to the platform (<https://iaffe2026.exordo.com>) - it is only possible to upload it through the web browser, it doesn't work on the app - , on your dashboard you will see a "My Presentations" card, click on "Upload presentation materials" and follow the instructions. You may also provide a small bio.

Final poster format:

- Orientation: Portrait
- Size: ARCH E 24" (W) × 36" (L) - A0 | Margins: At least 1" on all sides
- File Format: PDF only
- Minimum Resolution: 300 DPI | Color Mode: CMYK
- Font Size: Minimum 24pt for body text, 40pt+ for titles
- File Name Format: LastName_FirstName_PosterTitle.pdf (e.g., Singh_Aarti_GenderWageGap.pdf)

Session Chairs

Your role:

- Session chairs are responsible for ensuring the session begins and ends on time. Please arrive at the designated room 10 minutes prior to the beginning of the session.
- Below in the program, in each session it is indicated who will act as the Chair.
- Each session is 90 minutes long. For a standard 4-presentation session, each speaker will have 15 minutes to present their work, followed by 30 minutes for questions. For a 5-presentation session, each speaker will have 15 minutes to present their work, followed by 15 minutes for questions.
- When you arrive at your session room, whether virtual or in-person, a volunteer will be present to assist you in enabling hybrid access to your session.

How to prepare:

- As we have hybrid and in-person sessions, your session may be composed of both virtual and in-person attendees and the presenters in your session panel may also be mixed. Please check on the Conference Program below who is speaking in your session and if your session is hybrid.
- If you find that presenters for your session are not listed as speakers, it's most likely because they have not registered for the conference and therefore can't be added as a speaker. If you feel there is an error, please email conference@iaffe.org.

Important Note for All Sessions

- Please carefully review the list of speakers for your session on the platform. If there are any updates, changes, or corrections (e.g., additions, withdrawals, or replacements), please notify us immediately at conference@iaffe.org.
- All listed speakers must be up to date and accurately reflected in the session. If applicable, co-authors may also be added as speakers to the session.

CONFERENCE GENERAL SCHEDULE

Pre-Conference: July 8, 2026	
2:00 pm – 6:00 pm	Young & Early Career Scholars Pre-Conference
6:00 pm – 7:30 pm	Pre-Conference Reception
Conference Day 1: July 9, 2026	
9:00 am – 10:45 am	OPENING PLENARY
10:45 am – 11:15 am	<i>Coffee/Tea Break</i>
11:15 am – 12:45 pm	Concurrent Sessions 1
12:45 pm – 1:45 pm	Lunch
1:45 pm – 3:15 pm	Concurrent Sessions 2
3:25 pm – 4:55 pm	Concurrent Sessions 3
4:55 pm – 5:30 pm	<i>Coffee/Tea Break</i>
5:30 pm – 7:00 pm	LOCAL PLENARY
7:00 pm – 9:00 pm	OPENING RECEPTION
Conference Day 2: July 10, 2026	
8:00 am – 9:00 am	New Member's Breakfast
9:00 am – 9:15 am	PRESIDENTIAL ADDRESS
9:15 am – 10:45 am	MEMBERSHIP MEETING & BOOK CELEBRATION
10:45 am – 11:00 am	<i>Coffee/Tea Break</i>
11:00 am – 12:30 pm	Concurrent Sessions 4
12:30 pm – 1:30 pm	Lunch
1:30 pm – 3:00 pm	Concurrent Sessions 5
3:10 pm – 4:40 pm	Concurrent Sessions 6
4:40 pm – 5:00 pm	<i>Coffee/Tea Break</i>
5:00 pm – 6:30 pm	Concurrent Sessions 7
6:30 pm – 7:30 pm	Regional Network Meetings
7:30 pm – 10:00 pm	CONFERENCE DINNER
Conference Day 3: July 11, 2026	
9:15 am – 10:45 am	Concurrent Sessions 8
10:45 am – 11:15 am	<i>Coffee/Tea Break</i>
11:15 am – 11:30 am	POSTER AWARDS
11:30 am – 1:00 pm	CLOSING PLENARY

WEDNESDAY, 8 JULY 2026 — PRE-CONFERENCE

1:00pm – 6:00pm

Teatrino

Registration

2:00pm – 4:00pm

Auditorio Manuelita

Young & Early Career Scholars Pre-Conference Panel

Feminist Economics in Contested Times: Histories, Pathways, and Collective Futures

Panelists: Camila Orozco Espinel, Crystal Simeona, Pato Lateral Sumangala Damodaran | Moderated by Lorena Valle Cuéllar

How feminist economics knowledge is produced, mobilized, and challenged across different regions and political environments. What are the challenges feminist economists and activists face today, including political pressures, the decreasing number of critical academic spaces, and rising authoritarianism. What efforts have been made to understand the complexity of these challenges within our discipline? How do ideas and proposals circulate across regions? Are these unprecedented incidents or part of longer historical patterns? Have feminist scholars faced similar challenges before? The history of the journal and the IAFFE offers insights into these questions. The story of the Feminist Economics journal is a story of resistance; the establishment of IAFFE is an outcome of marginalization, demonstrating how feminist economists have organized collectively to create alternative institutions and sustain critical knowledge production. Building on this history and using the experiences from academia, NGOs, and governments, we explore the boundaries of research, teaching, and activism and how this wide variety of experiences can inform the next generations and introduce new tools to their toolbox to navigate contested political and academic contexts.

4:00pm – 6:00pm | Breakout Sessions

<p>WORKSHOP Feminist Economics From the Global South: Epistemologies, Methodologies and Solidarity</p> <p>» Mayada Hassanain, Natalia Flores, Sumangala Damodaran, and Leandro Velasco</p>	<p>WORKSHOP Decolonial Voices in Feminist Thought: Territory, Knowledge and Resistance</p> <p>» Angela Lucero, Maria Eugenia Orejuela, Paola Andrea Tovar, and Emilia Millon</p>	<p>WORKSHOP The Care Economy: Social Organization, Methodologies And Policies</p> <p>» Johanna Gómez Castro, Shaienne Osterreich, Suelen Castiblanco, Valeria Esquivel, and Anamary Maqueira</p>
<p>WORKSHOP Meet the Editors</p> <p>» FE Journal Associate Editors, and Minh Tam Bui,</p>	<p>WORKSHOP Young Scholar Committee: What It Is and Why It Matters</p> <p>» Antonella Gervagi, Noelia Méndez Santolaria, and Ana Laura Jaruf</p>	<p>WORKSHOP IAFFE Mentoring Group</p> <p>» MaryBeth Bognar, and Micaela Jazmin Fernandez Erlauer</p>

* If you are attending the Pre-Conference please indicate the session you are most willing to participate [here](#).

6:00pm – 7:30pm

Teatrino

Pre-Conference Reception

THURSDAY, 9 JULY 2026

8:00am – 12:00pm

Plazoleta Saman

Registration

9:00am – 10:45am

Auditorio Manuelita
Livestreamed

Opening Plenary

Feminist Economics and Transformative Change: Ideas, Policies and Movements

Panelists: Rebeca Gomez Betacourt (University of Lyon, France), Valeria Esquivel (ILO, Geneva), Sara Stevano (SOAS, London), Constanza Tabbush (UN Women, New York) and Jayati Ghosh (UMass, Amherst) | The session is chaired by Outgoing President and Conference Chair, Sara Cantillon (GCU, Glasgow).

The Opening Plenary speaks directly to the title of the Conference - Feminist Economics and Transformative Change: Ideas, Policies, Movements. It seeks to recognize and celebrate ideas, movements, and policies which promote transformative change -that is, change that seeks to challenge and reshape the structures that produce inequality from a feminist economics perspective. In an increasingly volatile and unequal world the work of feminist scholars, activists, and policymakers stands as a testament to resilience, creativity, and transformative vision. The opening plenary looks at transformative change from different perspectives, historical and thematic, as well as the challenges of the current economic and political situation and the opportunities that exist for collective resistance and transformative change.



10:45am – 11:15am

Building D Corridors

Coffee & Tea Break

CONCURRENT SESSIONS 1 – THURSDAY 9 JULY | 11:15 am - 12:45 pm

PANEL (HYBRID)	PANEL (HYBRID)	PANEL (HYBRID)	PANEL (HYBRID)
Presupuestos con Enfoque de Género y Derechos Humanos: Desafíos y Oportunidades para	Feminist Institutionalism and Gendering Public Finance: Cross-national and	Neoliberal Subjectivities And The Role Of Social Movements: An Analysis From	Gendering the Debt Crisis: South America and the World Venue: 104D

<p>Alcanzar una Distribución Equitativa de los Recursos en el Sur Global</p> <p>Venue: 101D Panel Chair: Malena Vivanco</p> <p>Presupuesto para la Igualdad Sustantiva en México » Alejandra Macías Sánchez, Aura Erendira Martínez Oriol</p> <p>Incorporación de Perspectivas de Género en el Presupuesto Nacional de Irán » Celina Santellán, Micaela Jazmin Fernandez Erlauer</p> <p>Reglas formales e informales del presupuesto nacional argentino: ¿instituciones propicias para la transformación feminista? » Micaela Jazmin Fernandez Erlauer</p>	<p>Cross-disciplinary Perspectives on Process and Change</p> <p>Venue: 102D Panel Chair: Caren Grown</p> <p>Towards a Care-Responsive Budget: A Feminist Economic Approach to Fiscal Policy in Brazil » Ana Cardoso, Luiza Nassif, Theo Diogo</p> <p>Hand in Hand? Gender Responsive Budgeting and Feminist Movements » Koketso Masenya, Juhi Kasan</p> <p>Gender Budgeting in Belgium: A Feminist Institutional Analysis of Policy Failure and Pathways for Advancement » Noémie Evrard</p> <p>Addressing gender equality within budgetary processes: dynamics of politicization and depoliticization » Alice Lechat</p>	<p>Feminist Political Economics</p> <p>Venue: 103D Panel Chair: Maria Eugenia Orejuela</p> <p>Teaching capitalism? Feminist popular economics education in the so-called "transition" to capitalist market economies in Central and Eastern Europe. » Silke Steinhilber</p> <p>Chontudas and Mata'e Pelos: Braiding Black Hair Economy in Antiracist Struggles in Colombia » Karen Giselt Dominguez Mendoza</p> <p>Queer Pedagogies, Political Economy, and the Dispute over Neoliberal Subjectivities » Leandro Velasco Cicchitti</p> <p>Self-recognition, self-valuation and customary law: a relationship between indigenous peoples and archaeology from a feminist economics analysis » Maria Eugenia Orejuela</p> <p>Ludic pedagogies against neoliberal subjectivities: reflections and experiences from a participatory research in feminist economics in Argentina » Emilia Millon</p>	<p>Panel Chair: Kanchana N Ruwanpura</p> <p>Social Infrastructure Spending and the Gender Dimensions of Debt Sustainability » Selin Secil Akin, Juan Antonio Montecino</p> <p>Life as Opposed to Debt Sustainability: Gender Tensions in the International Debt Architecture » Verónica Serafini, Patricia Miranda, Rodolfo Bejarano, Daniela Berdeja Ruiz</p> <p>A Feminist Perspective on the Urgent Need for Reforms in Sovereign Credit Ratings » Ramya Vijaya</p> <p>"You Don't Solve Your Problems by Sacrificing Your Aged": A feminist political economy analysis of Ghana's Domestic Debt Exchange Programme » Oduro Abena</p> <p>Debt, Distress and Defiance: Feminist Political Economy Perspectives » Kanchana N Ruwanpura, Smriti Rao, Oduro Abena</p>
<p>PANEL (HYBRID)</p> <p>Gender and Higher Education: Global Perspectives</p> <p>Venue: 105D</p>	<p>PANEL</p> <p>Reescribir la Historia de la Economía Desde una Perspectiva Feminista</p> <p>Venue: 106D</p>	<p>PANEL</p> <p>Feminist Economic Theory: Ontology and Methodologies</p> <p>Venue: 107D</p>	<p>PANEL</p> <p>The Geographies of Care and Social Reproduction</p> <p>Venue: 108D</p>

<p>Panel Chair: Curwyn Mapaling</p> <p>Impact and Prestige for Whom? Gender, Collaboration, and Visibility in CEE Economics » Magdalena Rozwadowska, Agnieszka Bem, Milena Kowalska, Pawel Predkiewicz</p> <p>Gender Inequality in Higher Education: Evidence from Emergency Remote Teaching in Brazil's Private Sector » Stela Teles, Danielle Carusi Machado, Bruna de Andrade</p> <p>Giving Care Its Due: The Feminist Political Economy of Academic Support Work in South Africa » Curwyn Mapaling</p> <p>Beyond the 'International student' label: Asian PhD mothers and the relational economics of care » Kim Nguyen</p> <p>Invisible Barriers and Possible Bridges: Women's Career Progression in French and Italian Academia » Juliana Nasciutti</p>	<p>Panel Chair: Carmen Diana Deere</p> <p>De la reproducción del capital a la reproducción de la vida: Experiencias de política pública desde las economías populares y feministas » Luisa Tovar, Paula Triviño-Gaviria</p> <p>Caminos hacia la reforma de los derechos de propiedad de las mujeres casadas en América del Sur, 1900-1950 » Carmen Diana Deere</p> <p>Cargos elusivos: ¿Por qué las mujeres no han ocupado las principales posiciones económicas en Colombia? » Ricardo José Salas Díaz, Marta Juanita Villaveces, Pilar Torres, João Ferreira</p> <p>En busca de mis derechos. Agencia, búsqueda y logros en derechos económicos y sociales de las mujeres durante la primera mitad del siglo XX: un análisis regional » Irina Rosa España Eliaiek, María José Fuentes Vásquez</p>	<p>Panel Chair: Mónica Grau-Sarabia</p> <p>Standardizing Measurement as a Coalition Building Exercise for Gender Transformation » Aubryn Sidle, Brenda Oulo</p> <p>Gendered Economic Subjectivation: Evidence from the Case of Formentera Island, Spain » Mónica Grau-Sarabia</p> <p>Social Ontology and Gender Invisibility in the Economic Theory » Carolina Cavalcante, Luciana Leis</p> <p>Placing Human Capability at the Heart of Post-Keynesian Analysis: Reconsidering the Supply-Side Constraint and Lessons for Public Policy » Clara Brenck, Gustavo Serra</p>	<p>Panel Chair: Natalia Ramirez</p> <p>Lifecycle Impacts of Caregiving: How Paid Leave Shapes Women's Retirement Decisions in the United States » Tracey Freiberg, Martha Susana Jaimes</p> <p>Caring for Change: Integrating Care Work into Egypt's Political Economy » Mona Saeed Mohamed Saeed Salem, Kamal Tasiu Abdullahi, Mariam Ahmed Mohamed Mansour</p> <p>Communities of Care without Redistribution or Autonomy » Natalia Ramirez</p> <p>Blurred Boundaries: Social Reproduction in Indian Slums » Shloka Murarka</p> <p>The Isolating Geographies of Care: The Case of Brazil » Manuel Garcia Dellacasa</p>
<p>PANEL</p> <p>¿Incluir Para Qué? Inclusión Financiera, Trabajo y Desigualdad de Género en América Latina Desde la Economía Feminista</p> <p>Venue: 201D</p>	<p>PANEL</p> <p>Cambio Climático y Respuestas Comunitarias</p> <p>Venue: 202D Panel Chair: Betty Nogueira Rocha</p>	<p>PANEL</p> <p>Cuidados y Reproducción Social en América Latina. Entre Avances, Paradojas y Tensiones.</p> <p>Venue: 203D Panel Chair: Anamary Linares</p>	<p>PANEL</p> <p>Historia Intelectual de la Economía Feminista en América Latina: Teorías, Conceptos y Genealogías</p> <p>Venue: 204D Panel Chair: Justina Lee</p>

<p>Panel Chair: Natalia Escobar Váquiro</p> <p>¿Riesgo financiero o sesgo de género? Una lectura crítica de la evaluación crediticia en Colombia: El caso "Finanzas sin etiquetas" » Soraya Husain Talero, Vladimir Canizales López, José Manuel Rincón</p> <p>Macroeconomía feminista como brújula para un nuevo pacto social en América Latina. » Angélica Meneses</p> <p>El Costo Económico de la Desigualdad de Género en Brasil: Estimando Pérdidas al Crecimiento y Desarrollo » Daniela Schettini, Ana Helena Baptista Rodrigues</p> <p>Resignificar la deuda: financiarización, subjetividad y economía feminista desde una experiencia de la economía popular » John Jairo Cuevas, Natalia Escobar Váquiro</p>	<p>Creación de un Fondo Federal Climático para la resiliencia ambiental » Antonella Gervagi, Ana Laura Jaruf</p> <p>Feminismo, cuidado y ambiente: aprendizajes desde la organización comunitaria de mujeres en el Barrio Rodrigo Bueno en Ciudad de Buenos Aires con una perspectiva interseccional » Cecilia Andrea Galarza, Alison Lorena Fuentes Oliveros, Yamila Uriona</p> <p>Género, poder epistémico y desajustes varietales en sistemas descentralizados de semillas de frijol en Costa Rica » Luis Sanchez</p> <p>Mujeres de la Corona: Agroecología y empoderamiento de las mujeres en las ciudades » Betty Nogueira Rocha</p>	<p>Desafíos y avances de los cuidados como agenda transformadora en Colombia. » Natalia Moreno Salamanca</p> <p>La política de cuidados en Brasil y la generación de ocupaciones socialmente relevantes para la sostenibilidad de la vida » Marilane Teixeira</p> <p>Cuidados y reproducción social en Ecuador: paradojas, nudos y tensiones. » Ailynn Torres</p> <p>Cuba: avances normativos de los cuidados en tiempos de crisis de reproducción social. ¿Paradoja o transformación inevitable? » Anamary Linares</p>	<p>Una Primera Historiografía del Pensamiento Económico Feminista Latinoamericano » Justina Lee</p> <p>Historia de la Macroeconomía Feminista Latinoamericana desde la experiencia del grupo de trabajo de Género y Macroeconomía en América Latina - GEM-LAC » Lorena Valle Cuéllar, Sarah Small</p> <p>Género, desarrollo y dependencia: los aportes fundacionales de Larguía y Bambilra a la economía feminista » Agostina Costantino, Pato Laterra, María Julia Eliosoff</p> <p>Pensamiento estructuralista-cepalino y las ideas de la economía feminista en América Latina » Andrea Guillem</p>
<p>PANEL</p> <p>Care, Welfare, Policy and Inequality</p> <p>Venue: 205D</p> <p>Panel Chair: Johanna Cortes</p> <p>The Hidden Economic Costs of Menopause: Income Distribution and Health Expenditures in Mexico » Claudia Sámamo-Robles, Veronica Hernández</p>			

<p>Unpaid Care Work in India's Political Economy: Insights from a Feminist Lens » Ayesha Datta, Shiney Chakraborty</p> <p>Money on the Margins: Gendered Financial Decisions Under Asylum Constraint in Britain » William Shankley</p> <p>The popular economies of care » Johanna Cortes</p> <p>Domestic Work and Household Time Allocation: Evidence from India » Hiya Singh Rajput</p>			
--	--	--	--

12:45pm – 1:45pm Lunch
Plazoleta

CONCURRENT SESSIONS 2 – THURSDAY 9 JULY | 1:45 pm - 3:15 pm

<p>ROUNDTABLE (HYBRID)</p> <p>Reimagining Feminist Macroeconomics: Legacies and Future Directions of the Gender and Macroeconomics International Working Groups</p> <p>Venue: 101D Panel Chair: Lorena Valle Cuéllar</p> <p>» Lorena Valle Cuéllar, Milena Dehn, Elissa Braunstein, Caren Grown,</p>	<p>PANEL</p> <p>Decolonising Labour and Social Reproduction in Extractive Economies: Gendered Struggles, Care Work, and Pathways to Justice in Africa</p> <p>Venue: 102D Panel Chair: Dr Sunday Israel Oyebamiji</p> <p>The Hidden Cost of Climate Adaptation: Valuing Unremunerated Water Work in Kenya's</p>	<p>PANEL (HYBRID)</p> <p>LGBTQI+ Economic Lives and Queer Political Economy</p> <p>Venue: 103D Panel Chair: Hossein Cheaito</p> <p>Queer 'Debt': Rethinking Economic Evidence from Beirut » Hossein Cheaito Queering central banking in a hotter world. An intersectional analysis of monetary policy against climate change » Karin Schoenpflug</p>	<p>ROUNDTABLE (HYBRID)</p> <p>Understanding Financial Vulnerability Through a Feminist Lens: the Inadequacy of Individual Responsibility Narratives and the Urgency for Structural Transformation</p> <p>Venue: 104D Panel Chair: Diletta Taris</p> <p>» Diletta Taris, Hayley James, Fatma Ibrahim, Robyn Moffat-Wall, Banan AbuzainEddin</p>
---	---	---	---

<p>Corina Rodriguez Enriquez, Diane Elson, Rania Antonopoulos, and Ipek Ilkkaracan</p>	<p>Gendered Response to Climate Change » Fredrick Mwenje</p> <p>The role of Trade Unions in shaping a Just Transition for Women Workers in Ghana's Oil Palm Sector » Eunice Asiedu</p> <p>Empowering the Excluded: Strategies for Women's Economic Agency and Female Education in Fragile States of Northern Nigeria » Dunbe Birsan</p> <p>Coping, Care, and Colonial Legacies: Indigenous Survival Strategies among Nigerian Women in Live-In Domestic Labour » Dr Sunday Israel Oyebamiji</p>	<p>"Inclusive Financing? Examining Transgender Entrepreneurs' Access to Capital in the Indian Economy" » Akansha Priyadarshani</p> <p>LGBTQ Community Inclusion and Economic Development in Sub-Saharan Africa » Ndirangu Ngunjiri</p>	
<p>ROUNDTABLE (HYBRID)</p> <p>Pan-African Feminist Labour Narratives: Working, Imagining and Building Otherwise</p> <p>Venue: 105D Panel Chair: Maureen Khausi</p> <p>» Maureen Khausi, Fatimah Kelleher, Joanita Najjuko, Dr. Toyin Ajao, Cynthia Olufade, Twasiima Bigirwa</p>	<p>ROUNDTABLE (HYBRID)</p> <p>Austerity, Debt, and Fiscal Policy: Feminist Perspectives on the Sustainability of Life in the Global South</p> <p>Venue: 106D Panel Chair: María Julia Eliosoff</p> <p>» María Julia Eliosoff, Agostina Costantino, Farah Daibes, Saba Gul Khattak</p>	<p>PANEL</p> <p>Políticas e Estructuras del Cuidado en América Latina</p> <p>Venue: 107D Panel Chair: Alma Espino</p> <p>Identificación de barreras a las ideas de la economía feminista: discusiones en torno a políticas de cuidados en América Latina » Alma Espino, Paola Azar</p> <p>Estructuras latentes de la economía del cuidado en Colombia: una aproximación con modelos de mezcla y aprendizaje estadístico » Laura Estefany Pardo Vargas, Jose Miguel Leon</p> <p>Cuidar para crecer. Análisis de la experiencia</p>	<p>ROUNDTABLE</p> <p>Navigating the Margins: Building Feminist Economics Communities Within Traditional Departments</p> <p>Venue: 108D Panel Chair: Míde Griffin</p> <p>» Míde Griffin, Naomi Crowther, Cheryl Doss</p>

		<p>de infraestructura de cuidados en el Ministerio de Obras Públicas de Argentina en el período 2020-2030 » Maria von Zeschau</p> <p>Más allá de la técnica: La dimensión afectiva y moral como límite y oportunidad para las políticas de cuidado en Cali. » Alejandra Drada, Soraya Husain Talero, Camilo Salinas</p> <p>Derecho al Cuidado en Brasil: Potenciales y desafíos del Plan Nacional a partir del marco regional latinoamericano » Lais Assenço Paulino, Luiza Nassif, Eslen Brito</p>	
<p>WORKSHOP</p> <p>Sustaining a Transformative Care Economy Agenda in Multilateral Spaces: Perspectives from Africa and Latin America</p> <p>Venue: 201D Panel Chair: Ana Moreno & Evelyn Baraké</p> <p>» Evelyn Baraké, Lyn Ossome, Norma Sanchis, Juhi Kasan, Lucia Cirmi Obon, Ana Moreno</p>	<p>WORKSHOP</p> <p>Mapping Accumulated Gender Gaps in Food Systems</p> <p>Venue: 202D Panel Chair: Jennifer Twyman</p> <p>» Jennifer Twyman, Ramya Ambikapathi, Marlène Elias, Fanny Howland, Natalia Triana Angel, Jennifer Rebecca Wiegel, Gina Kennedy, Manuel Francisco Moreno Bustamante</p>	<p>PANEL</p> <p>Barriers and Contributions to Feminist Economic Theory</p> <p>Venue: 203D Panel Chair: Seán Muller</p> <p>The role of methodology and epistemology in barriers to feminist economics » Seán Muller</p> <p>The Technogendering of the Digital Economy: A Feminist Framework for Transformative Analysis and Interdisciplinary Methodologies » Mónica Grau-Sarabia, Susana Galán, Daniela Horta</p> <p>Co-optation and Feminist Economics</p>	<p>PANEL</p> <p>El Mercado de Trabajo Desde Miradas Feministas</p> <p>Venue: 204D Panel Chair: Arlette Covarrubias</p> <p>Privaciones en la calidad del empleo en México. Diferencias entre mujeres y hombres. » Arlette Covarrubias</p> <p>Discriminación salarial y jerarquías urbanas desde una perspectiva feminista: evidencia del mercado laboral formal brasileño » Angelica González, Ticiania Moura, Monica Pires, Alberto Díaz</p> <p>Aglomeraciones Exportadoras y Desigualdad de Género en la Manufactura Brasileña: Un Análisis</p>

		» Débora Machado Nunes, Stephan Lefebvre	Espacial de la (In)Visibilidad Económica de las Mujeres » Daniela Schettini Transformaciones digitales en el empleo y su impacto en las brechas de género » Diana Ochoa Díaz , Laura Perez Ortiz
ROUNDTABLE Labour Unions for a Care Economy Venue: 205D Panel Chair: Sarah Herold » Sarah Herold , Kate Lappin, María Belén Paladines Córdova , Evelin Gonzalez, Vanessa Pillay			

CONCURRENT SESSIONS 3 — THURSDAY 9 JULY | 3:25 pm - 4:55 pm

ROUNDTABLE (HYBRID) Microfinanzas y Extractivismo Financiero en México: Evidencias de una Industria de Despojo para las Mujeres Venue: 101D Panel Chair: Alicia Girón » Alicia Girón , Daniela Monserrat Castro Acosta , Andrea Alejandra Rodriguez Calderon , Jessica Alicia Veloz Cano , Daniel Mirón	PANEL (HYBRID) Labor Markets, Reproductive Autonomy, and Motherhood Venue: 102D Panel Chair: Marcella Corsi Monopsony and the Economic Lives of Motherhood: An Empirical Examination » Tracey Freiberg , Melissa Langworthy Childcare and Maternal Labor Force Participation: Evidence from India's ICDS Program » Janaki Shibu , Nancy Devpura, Naresh Kumar, Navneet Manchanda	PANEL (HYBRID) Queering Applied Economics: Evidence, Policy, and Lived Realities Venue: 103D Panel Chair: Cícero Braga Social Policies from Feminist Economics and Trans Studies: An Argentine Case Study (2012–2024) » Pato Laterra Las Mariposas del Café: Landlessness and Labour Precarity among Indigenous Trans Women in Colombia » Catalina Alviz Donoso	ROUNDTABLE (HYBRID) Feminist Taxation for the Achievement of Democracy and Human Rights Venue: 104D Panel Chair: Nasheli Noriega Izquierdo » Mariana Matamoros , Roos Saalbrink , Carolina Finette , Thokozile Madonkdo , Nasheli Noriega Izquierdo
--	--	---	--

	<p>Maternity Cash Transfers and Gendered Poverty in the Informal Sector: Evidence from a Static Microsimulation in Ethiopia » Chiara Sciascia, Katrin Gasior, Marcella Corsi</p> <p>When Firms Care: Family-Friendliness and the Motherhood Penalty » Emilia Repetto, Martina Querejeta, Estefanía Galván, Rodrigo Ceni</p> <p>Care and Constraint: Gendered Labor Market Responses to Childcare Disruption in Brazil » Hanna Dooley</p>	<p>The nature and determinants of partnership premiums in same-sex and different-sex households in Brazil » James Heintz</p> <p>Unpaid Care and Gender Expectations in LGBTQIA+ Partnerships: Opportunities to Re-shape Policy? » Diletta Taris, Nina Teasdale, Carolina Herrera-Cano</p>	
<p>PANEL (HYBRID)</p> <p>Women-Led Adaptation and Feminist Pathways to Climate Resilience in Africa</p> <p>Venue: 105D Panel Chair: Angela Opondoh</p> <p>From Vulnerability to Adaptability: An Inquiry into the Indigenous Eco-Feminist Resistance Strategies among the Rural Banyoro Women » Birungi Robert</p> <p>Learning from Women-led Coastal User Groups in Kenya: Engaging Place-Based Relational Values for Collective Care and Agency » Margaret Poulos</p> <p>Leveraging Asset Portfolios for Climate Resilience: A Case Study of Female-Headed</p>	<p>ROUNDTABLE (HYBRID)</p> <p>Innovations in Public Finance: A New Fiscal Paradigm for Gender Equality, Climate Adaptation, and Care</p> <p>Venue: 106D Panel Chair: Caren Grown</p> <p>» Caren Grown, Lekha Chakraborty, Ana Maria Tribin, Abena Oduro, Jerome de Henau, Eugénie Ribault</p>	<p>ROUNDTABLE</p> <p>Cómo se Sostienen las Políticas de Cuidado en América Latina: Aprendizajes Comparados Desde Alianzas Entre Estado, Academia y Sociedad Civil</p> <p>Venue: 107D Panel Chair: Vanessa Rojas</p> <p>» Vanessa Rojas, Antonia Asenjo, Soledad Salvador, Yasodhara Silva Medina, Maria Nohemi González González Martínez, Natalia Moreno Salamanca</p>	<p>ROUNDTABLE</p> <p>Macroeconomics in Turmoil: Feminist Perspective from the Global South</p> <p>Venue: 108D Panel Chair: Noelia Méndez Santolaria</p> <p>» Mariama Williams, Masava Llaveneras Blanco, Corina Rodríguez Enriquez, Noelia Méndez Santolaria</p>

<p>Households in Kisumu County, Kenya » Angela Opondoh, Wendy Khonziwe</p> <p>Evaluating The effectiveness Of Women-Led Climate Change Initiatives in Ghana: A Case Study of the Lake Bosomtwe District » Portia Owusu-Amoateng</p>			
<p>WORKSHOP</p> <p>Weaving Feminist Fiscal Networks: Experiences, Knowledge, and Alliances for Social and Gender Justice</p> <p>Venue: 201D Panel Chair: María Julia Eliosoff</p> <p>» Alma Espino, María Julia Eliosoff, Maureen Mburu, Crystal Simeoni, Malena Vivanco, Andrea Larios</p>	<p>PANEL</p> <p>Food Security, Gender and Social Reproduction</p> <p>Venue: 202D Panel Chair: Immaculate Omondi</p> <p>Unpaid care work in smallholder livestock production context: Can socio-technical bundles of innovations improve work balance and enhance women's empowerment? » Immaculate Omondi, Alessandra Galie, Melkamu Bezabih Derseh, Alfred Juma, Angelina Cikanda, Eunice Kariuki, Isabelle Baltenweck</p> <p>The Unseen Labor: Care Work, Social Reproduction, and their impact on Food Systems and Undernourishment in the Global South » Oluwatimileyin Deborah Obasa</p> <p>Does women's empowerment mediate the impact of shocks on food insecurity? » Marya L Hillesland, Cheryl Doss, Martina Querejeta</p> <p>Understanding the Gendered Effectiveness of Foreign Assistance to Prevent Food Insecurity</p>	<p>PANEL</p> <p>Employment, Social Protection and Gender</p> <p>Venue: 203D Panel Chair: Ajit Zacharias</p> <p>Employment insecurity among employees in sub-Saharan Africa: Does gender matter? » Ajit Zacharias, Aashima Sinha, Oduro Abena, Nthabiseng Moleko, Thomas Masterson, Fernando Rios-Avila</p> <p>The Effects of Macroeconomic Policies on Employment and Gender Inequality in Iran » Ida Mirzaie</p> <p>Gender-based occupational segregation: A multi-country analysis » Remi Vine</p> <p>What Is New in the New Forms of Work? A Feminist Political Economy Analysis » Lygia Sabbag Fares, Margarita Olivera, Beatriz Schwenck, Giovanna Angeloti</p>	<p>PANEL</p> <p>La Economía Social y Solidaria como Resistencia y Transformación</p> <p>Venue: 204D Panel Chair: Federico Parra</p> <p>La lucha contra el hambre en la periferia de Recife: perspectivas de solidaridad activa organizada a través de las manos de las mujeres » Letícia Pereira</p> <p>Reconfigurar poder y cuidado en el empleo informal: aportes de la economía social y solidaria a la equidad de género » Federico Parra</p> <p>Transformar la economía, transformar las metodologías: análisis de una experiencia de investigación colaborativa en economía feminista » Natalia Flores Garrido</p> <p>Entre la precariedad y la autogestión: la experiencia asociativa de trabajadoras domésticas brasileñas en el emprendimiento solidario "Unidas na Limpeza" » Lara Campoli</p>

	<p>in Palestine: A Temporal Analysis of Targeting mechanisms and Treatment Effects (2018-2020) » Rabeh Morrar</p>		
<p>WORKSHOP</p> <p>Arcilla Como Política: Materialidades Feministas, Economías de Cuidado y Ecologías en Transformación</p> <p>Venue: 205D Panel Chair: Renee Perez Massard and Laura Castillo</p> <p>» Renee Perez Massard, Laura Castillo</p>	<p>WORKSHOP</p> <p>Building a Feminist Economics Graduate Program: Challenges, Strategies, and Next Steps</p> <p>Venue: 206D Panel Chair: Stefania Marchina</p> <p>» Stefania Marchina, James Heintz, Mieke Meurs</p>		

4:55pm – 5:30pm

Building D Corridor

Coffee & Tea Break

5:30pm – 7:00pm

Auditorio Manuelita

Livestreamed

Local Plenary

This plenary session is hosted and organized by our local partners, Universidad ICESI and Mesas de Economía Feminista, bringing regional voices and perspectives to the heart of the conference program. Details will be shared soon — please check the Exordo program for updates.

7:00pm – 9:00pm

Saman & Plaza

Banderas

Opening Reception

Join us for a welcoming reception hosted by our local hosts, Universidad ICESI, the Observatorio para la Equidad de las Mujeres, and Mesas de Economía Feminista, featuring light food and drinks to kick off the conference. Details will be shared soon — please check the Exordo program for updates.

EXIT

Group 3
Joint courses, seminars, online activities
* I teach "Gender Economics"
graduate course.
* I teach gender
Share/Intermedia
Movement & Gen
Econ.



FRIDAY, 10 JULY 2026

8:00am – 12:00pm Registration

Plazoleta Saman

8:00am – 9:00am New Member's Breakfast

109G

An informal networking breakfast for all members to meet IAFFE staff and board members, get oriented in the community, and connect with fellow attendees through fun icebreaker activities. Coffee, tea, and light breakfast items will be served. Please complete [this form](#) to RSVP for the New Member's Breakfast.

9:00am – 9:15am Presidential Address

Auditorio Manuelita
Livestreamed

The Presidential Address features IAFFE's President Marcella Corsi delivering a keynote reflecting on the state of feminist economics, the association's work, and the year ahead. It is a highlight of the annual conference and an opportunity for the broader membership to hear directly from IAFFE's elected leader.

Marcella Corsi is Professor of Economics at *Sapienza University of Rome*, where she coordinates [Minerva - Laboratory on Diversity and Gender Inequality](#). She holds a Ph.D. in Economics from the University of Manchester (UK) and a degree in Statistics/Economics from University of Rome "La Sapienza". She is among the founders of the web-magazine [inGenere](#) and, since 2017, she is editor-in-chief of the *International Review of Sociology*.



9:15am – 10:45am Membership Meeting & Book Celebration

Auditorio Manuelita
Livestreamed

IAFFE's biannual Membership Meeting, which includes governance and committee updates, a Book Celebration featuring selected recent publications in feminist economics, and the presentation of the Rhonda Williams Prize. A special celebration organised by the Membership Committee will follow, offering an opportunity to connect with the broader IAFFE community.

10:45am – 11:00am Coffee & Tea Break

Building D Corridor

CONCURRENT SESSIONS 4 — FRIDAY 10 JULY | 11:00 am - 12:30 pm

<p>PANEL (HYBRID)</p> <p>Assessing Childcare Models in the Informal Economy: Methodological Innovations and Lessons from India and Colombia</p> <p>Venue: 101D Panel Chair: Gabriela Marzonetto</p> <p>Mapping Care, Power, and Inequality in Childcare Systems: A Three-Level Framework for Redistribution, Recognition, and Rights » Gabriela Marzonetto</p> <p>Evaluating Childcare beyond Access: Applying the Three-Level Framework to Colombia » Suelen Castiblanco, Johanna Gómez Castro</p> <p>Community-Based Childcare in Resource-Constrained Settings: Evidence from Gujarat's Informal Economy Workers » Totini Mitra, Mitali Nikore</p> <p>Two worlds of care: the politics of needs interpretation in feminist economics » Deeptha Chopra, Harshita Kumari</p>	<p>PANEL (HYBRID)</p> <p>Linking Militarization, Gender and Armed Conflict – Theoretical and Empirical Approaches</p> <p>Venue: 102D Panel Chair: Jennifer Olmsted</p> <p>The Gendering of Markets: Militarization and Segregation » Saniva Jilani</p> <p>Trading Welfare for Security: The Political Economy of Everyday Militarisation in Protracted Conflicts » Arianna Vignetti</p> <p>Feminist economics and violent conflict » Smita Ramnarain</p> <p>Conceptualizing the Links between Global Power Structures, Gender and the Military Industrial Complex » Jennifer Olmsted</p>	<p>PANEL (HYBRID)</p> <p>Herstory of Feminist Economics</p> <p>Venue: 103D Panel Chair: Günseli Berik</p> <p>Feminist Economics vs. Gender Economics: Revisiting the Difference According to FE Authors » Günseli Berik, Ebru Kongar</p> <p>The contribution of IAFFE conferences to the development of feminist economics » Marcella Corsi, Giulia Zacchia</p> <p>Reframing the Legacy of Joan Robinson through 'Herstories': Feminist Pedagogy, Epistemic Justice, and Heterodox Economics in the Global South » Flavia Ferreira da Silva</p> <p>Revisiting the 'feminist bank teller': a critical, feminist assessment of behavioral economics 50 years later » Seán Muller</p> <p>Where are the feminist economists? A publication analysis of an evolving field » Jose Alejandro Coronado Arciniegas, Zach Coble, Luiza Nassif</p>	<p>ROUNDTABLE (HYBRID)</p> <p>Our Revolution Will Not Be Green (or Pink) Washed: An Examination of Fossil Fuel Policies and the Need for a Feminist Just Transition</p> <p>Venue: 104D Panel Chair: Corina Rodríguez Enríquez</p> <p>» Tara Povey, Shereen Talaat, Katie Tobin, Corina Rodríguez Enríquez, Guillermina French</p>
<p>ROUNDTABLE (HYBRID)</p> <p>Rethinking Trade from a Gender-</p>	<p>ROUNDTABLE (HYBRID)</p> <p>Documenting IAFFE's Legacy: The Oral History Project!</p>	<p>ROUNDTABLE</p> <p>Debates en torno al Financiamiento de las Políticas de Cuidado</p>	<p>ROUNDTABLE</p> <p>Reclaiming a Feminist Future of Work in the AI Economy: An</p>

<p>Transformative Perspective</p> <p>Venue: 105D Panel Chair: Katia Schnellecke</p> <p>» Katia Schnellecke, Shraddha Chigateri, Caroline Dommen, Arimbi Wahono, Sabrina Salameh, Vahini Naidu, Amelia U. Santos-Paulino</p>	<p>Venue: 106D Panel Chair: Francisca Owusu</p> <p>» Jacqueline Janssen, Débora Machado Nunes, Daniel Sarmiento, Joan Combs Durso, Francisca Owusu, Wendy Khonziwe</p>	<p>en América Latina. Tensiones, Desafíos y Potencialidades para Erradicar la Desigualdad Desde el Debate Académico, de las Organizaciones Sociales y la Política Regional.</p> <p>Venue: 107D Panel Chair: Nasheli Noriega Izquierdo</p> <p>» Nasheli Noriega Izquierdo, Verónica Serafini, Lucía Cirmi Obon, Pato Latorra, Ana Isabel Arenas Saavedra</p>	<p>Interrogation of Global Digital Capitalism</p> <p>Venue: 108D Panel Chair: Inga Sabanova</p> <p>» Sadhana Sanjay, Sofia Scasserra, Flora Partenio, Aline Rivera</p>
<p>PANEL</p> <p>Violencias Interseccionales y Exclusion: Raza, Género y Pobreza</p> <p>Venue: 201D Panel Chair: Tania Martínez</p> <p>Violencia económica y perspectiva interseccional. » Tania Martínez, Tamara Clavería</p> <p>Mujeres Refugiadas Sirias y las Barreras para el Reasentamiento y la Integración Internacional » Khemily Carvalho</p> <p>Organizaciones internacionales y su influencia en la educación de niñas y mujeres » Paula Pavarina</p> <p>Aún sobre la Explotación de la mujer: Pasado y presente del enfoque de la economía brasileña por Lélia Gonzalez » Gabriel Lucena de Mattos, Daniel Pereira da Silva</p>	<p>PANEL</p> <p>Mapping Gaps and Building Feminist Tools to Analyze Public Debt and Household Debt: Perspectives from the Global South</p> <p>Venue: 202D Panel Chair: Micaela Jazmin Fernandez Erlauer & Montserrat Fois</p> <p>Financing gender policies in the era of austerity and restrictive fiscal rules: evidence from the biggest Latin economies » Letícia Inácio, Maria Clara Paiva</p> <p>Between financial vulnerability and inclusion: a study of two Public Financing Policies targeted at Low-Income Women » Malena Rubinstein</p> <p>The financial extractivism of Gentera Group's microcredit toward</p>	<p>PANEL</p> <p>Labor, Patriarchy and Marriage</p> <p>Venue: 203D Panel Chair: Avanti Mukherjee</p> <p>More than one wife: Marriage as a mechanism for labor allocation in India » Avanti Mukherjee</p> <p>Poverty or Patriarchy? Diagnosing sources of women's and men's disempowerment » Cheryl Doss, Ruth Meitzen-Dick</p> <p>Gendered Labor, Caste, and Social Reproduction: An Intersectional Analysis of Economic Disenfranchisement among Gujjar/Gurjar Women in India » Indrapal Gurjar</p> <p>Women's access to rain water for agricultural production: evidence from East Africa » Haroon Akram-Lodhi</p>	<p>PANEL</p> <p>Perspectivas Feministas Sobre Violencias Cotidianas</p> <p>Venue: 204D Panel Chair: Maria Castillo</p> <p>Ocupación, rupturas relacionales y riesgo de feminicidio en Cali: evidencia multivariada y tipologías latentes (2014–2025) » Felipe Meza</p> <p>Desplazamiento forzado, violencia y alternancia ideológica local: evidencia municipal y diseño de regresión discontinua en Colombia. » Oscar Rincon</p> <p>Cuidar para prevenir: mediación comunitaria, economía feminista del cuidado y violencia juvenil en Cali » Diana Valdes Zambrano, Maria Castillo, Alejandra Vidal Arango</p>

<p>Los lugares de la mujer negra: un análisis basado en su participación en el mercado laboral brasileño » Caroline Lima de Oliveira</p>	<p>informal women workers in Peru » Andrea Alejandra Rodriguez Calderon</p> <p>Between Precarization and Debt: Challenges Faced by Women Workers in the Morro São Bento Community – Santos (São Paulo, Brazil) » Ana Cristina Mélo</p> <p>The "Shadow" Price of Austerity: Analysis of Sovereign Debt and the Care Multiplier in Sub-Saharan Africa » Beatrice Mbinva</p>		<p>Mutilación Genital Femenina en Egipto y Colombia: Entre Ley y Tradición » Anna Carolinne Silva Correa</p>
<p>ROUNDTABLE</p> <p>Datos Ciudadanos para una Agenda Feminista: Complementar y Transformar la Producción de Datos en América Latina</p> <p>Venue: 205D Panel Chair: Diana Ramírez</p> <p>» Diana Ramírez, Natalia Escobar Váquiro, Claudia Liceth Fajardo Hoyos, Lizeth Mayerly Carreño Nuñez</p>			

12:30pm – 1:30pm

Lunch

Plazoleta

CONCURRENT SESSIONS 5 – FRIDAY 10 JULY | 1:30 pm - 3:00 pm

<p>PANEL (HYBRID)</p> <p>Desafiando la Financiarización de la Vida en el Sur Global: Crisis de la</p>	<p>PANEL (HYBRID)</p> <p>Women in Conflict, Exile, and Political Struggle</p>	<p>PANEL (HYBRID)</p> <p>Climate Adaptation, Agriculture, and Resilience</p>	<p>PANEL (HYBRID)</p> <p>Time Use, Unpaid Labor, and Intersecting</p>
--	--	---	--

<p>Reproducción y Persistencia de las Brechas de Género</p> <p>Venue: 101D Panel Chair: Alicia Girón</p> <p>Política fiscal progresiva para sostener el bienestar: el horizonte de México » Diego Merla López, Isabel Mateos, Emilio Del Rio, María Soledad Rodríguez</p> <p>Justicia fiscal con enfoque de género: desafíos para la arquitectura financiera internacional » Alicia Girón, Daniel Mirón</p> <p>Sostener la vida atravesando fronteras: Aproximación a la economía del cuidado en mujeres que migran de Venezuela hacia Colombia » Tania Eliaz</p> <p>Reforma fiscal en Brasil: impuestos indirectos y su impacto en la desigualdad de género, raza e ingresos » Lucilene Morandi, Cristina Vieceli</p>	<p>Venue: 102D Panel Chair: Silvana Tapia Tapia</p> <p>Resistance diaspora: experiences of Afghan women and the territorialization of struggles in Brazil » Rhellem Luz da Silva</p> <p>The Need for Feminist Urgency in Myanmar: Applying Feminist Principles to War-Torn Patriarchal Institutions of Myanmar » Naushaba, Shaista</p> <p>Penal violence, social reproduction, and the carceral periphery in Latin America: Knowledge Gaps and Preliminary Findings from Ecuador » Silvana Tapia Tapia</p> <p>Economies of Deliverance: Feminist Economics and Child Witchcraft in Nigerian Pentecostalism » Claire P. Avelotan</p> <p>Formalising Land Ownership of Formerly Displaced Women – Effects on Resource Allocation in a Post-Conflict Setting » Naomi Crowther</p>	<p>Venue: 103D Panel Chair: Nargiza Ludgate</p> <p>Bundling Women's Empowerment and Resilience-Enhancing Interventions in Uganda's Smallholder Food Systems » Nargiza Ludgate, Florence Muhanguzi, Brenda Boonabana, Laura Meinzen-Dick</p> <p>Staying Put, Losing Ground: A Feminist Geography of Women, Migration, and Food System Transformation in Arid Morocco » Khadija Kaffa</p> <p>Climate Change Adaptation, Gender, and Economic Resilience: A Feminist Economics Perspective from Rural Burkina Faso » Sidnoma Nita Belemsobgo</p> <p>Gendered Dreams and Realities: A Machine Learning Analysis of Qualitative Data on Community Gender Climate and Young Aspirations » Els Lecoutere</p>	<p>Inequalities in the Global Economy</p> <p>Venue: 104D Panel Chair: Sarah Gammage</p> <p>Time Poverty Feminization and Gender Discrimination in a Developing Country » Claudia Liceth Faiardo Hoyos, Jhon James Mora Rodriguez</p> <p>'Endless Variety, Monotonous Similarity': Gendered Time Use across Selected Asian Countries » Surbhi Malhotra, Hema Swaminathan, Tanima Ahmed, Kaushal Joshi, Iva Sebastian-Samaniego</p> <p>Intersecting Gender, Time and Income Poverty, and Climate Change: Leveraging Guatemala's Time Use Data for Policy Innovation » Sarah Gammage</p> <p>India's Gendered Labour Market and the Crisis of Care: An Econometric Analysis of Women's Labour Force Participation » Mridusmita Bordoloi, Rajshree Bedamatta</p> <p>Economic Development and Gendered Inequalities in Unpaid Labor in the Global Economy » Deepthi Madhu, Amrita Roy</p>
<p>PANEL</p> <p>Economía del Cuidado y Pobreza en América Latina</p>	<p>PANEL</p> <p>Gender Norms, Safety, and Labor Market Outcomes</p>	<p>ROUNDTABLE</p> <p>Feminist Economics at Risk: Surviving Institutional Collapse,</p>	<p>PANEL</p> <p>Digital Labor, AI, Technology, and the Future of Work</p>

<p>Venue: 105D Panel Chair: Angelica González</p> <p>Sostener la vida en la ruralidad: cuidado, envejecimiento y desigualdad en Cali » Sandra Balanta Cobo, Esthepania Lozano, Laura Fernandez, Dimey Londoño</p> <p>Politizar los cuidados: trabajo y género en la economía popular en Argentina » Agustina Traitemberg</p> <p>Perspectivas sobre pobreza y desigualdad en México desde la Economía del Cuidado » Angelica González, Monica Orozco, Cynthia Daniela Velázquez Garcés</p> <p>Micronegocios, trabajo de cuidado y pobreza: una mirada estructural a la desigualdad económica en Colombia » Valentina Valoves, Harrison Sandoval, Oscar Ramírez Vallecilla, Kandy Luana Valencia Correa, María Elena Colina, Esneyder Cortés</p> <p>Tiempo de mujeres: La economía invisible que sostiene a Ecuador » Mónica Molina Barzola, Alexandra Yépez Vera, Ivonne León Espinoza, Odette Perez</p>	<p>Venue: 106D Panel Chair: Bernice Owusu-Brown</p> <p>Unsafe Commutes as Economic Constraints: Gender Differences in Job Opportunities » Elisa Mahfouz</p> <p>Women's Labor Market Participation and Exposure to Intimate Partner Violence: Insights from Ghana's Family Life and Health Survey » Bernice Owusu-Brown</p> <p>The Role of Community Gender Norms in Shaping the Relationship Between Women's Employment and Intimate Partner Violence in Latin America: Evidence from Colombia » Deidi Olaya</p> <p>From Normes change to Policies changes » Jean Chrysostome Ndizeye</p>	<p>Political Hostility, and Fiscal Constraints</p> <p>Venue: 107D Panel Chair: Katherine Moos</p> <p>» Katherine Moos, Lorena Valle Cuéllar, Tracey Freiberg, Mary Borrowman, Luiza Nassif</p>	<p>Venue: 108D Panel Chair: Pía Garavaglia</p> <p>Innovation and Employment in Indian Manufacturing: The Role of Technological and Non-Technological Changes in Shaping Gender Diversity » Akash Yadav, SANDEEP KUMAR KUJUR</p> <p>Artificial Intelligence and Female Labour Force: A Driver or a Disruptor » FATHIMA SHERIN M, Christabell P.J.</p> <p>Platform Work, Informality and Gendered Inequalities in Latin America: A Feminist Economic Perspective on the Future of Work » Pía Garavaglia</p>
<p>PANEL Macro Frameworks, Policy, Tax and Financialization Venue: 205D</p>	<p>PANEL Tributación y Género en América Latina: el Rol de las Administraciones</p>	<p>PANEL The Black Social Economy in Comparative Perspective: Why</p>	<p>PANEL Los Costos Invisibles del Género Venue: 204D</p>

<p>Panel Chair: Jennifer Castañeda Navarrete</p> <p>Reimagining industrial policy through feminist lens » Jennifer Castañeda Navarrete</p> <p>Capitalism's Handmaidens – A feminist political economy of women's enterprise » Melissa Langworthy</p> <p>Public Spending as a Driver for Female Empowerment in Ghana: The Case of Three Districts » Godson Alorvito, Oduru Abena</p> <p>Credit Rating Agencies and the financialization of social reproduction: The reproduction of unequal gendered hierarchies through rigged ratings » Bhumika Muchhala, Maria Syed</p> <p>UN Tax Convention: International Law Contributions » Camila (GI-ESCR)</p>	<p>Tributarias en la Construcción de Sistemas Fiscales Más Justos</p> <p>Venue: 202D</p> <p>Panel Chair: Maureen Perez & Alejandro Juarez</p> <p>Análisis de los impactos tributarios sobre las desigualdades de género, raza y clase en Brasil, Colombia y México » Cristina Vieceli, Andrea Larios, Denisse Vélez, Paola García Rey, Helen Rojas, Lucilene Morandi</p> <p>La capacidad de la administración tributaria argentina en materia de fiscalidad corporativa internacional » Verónica Grondona</p> <p>Libro: Tributación y Género » Noelia Méndez Santolaria, Agustina Odonnell, Alejandro Mencías</p> <p>El Régimen Simple de Tributación en Colombia: una evaluación de su aporte a la equidad de género » Mariana Matamoros</p>	<p>Cooperativism Organizing Matters More Than Ever to Combat Racism and Sexism</p> <p>Venue: 203D</p> <p>Panel Chair: Caroline Hossein</p> <p>A Black feminist political economy for economists everywhere: Learning with the members of the DISE collective » Atyeh Ashtari, Caroline Hossein, Suzanne Bergeron</p> <p>Managing Precarity, Assembling Care: The Digital Futures of Black Feminist Social Solidarity Economies » Alison Francis</p> <p>Futures Thinking, Economic Dynasties and Economic Justice: Cooperative Practices among Black Women in Belgium » Leslie-Yosra Lukamba</p> <p>The ROSCA Network: How Black Canadian Women Use Community Banks to Build Economic Autonomy » Andria Barrett</p> <p>Cooperative Public Policies for Peace: Africana Feminist Economies, Political Power-Building, and Collective Rights in Colombia » Francy Natalia Mosquera Garcia</p>	<p>Panel Chair: Estefanía Galván</p> <p>Vivir para cuidar: mujeres cuidando a personas en situación de dependencia severa » Yuliana Karolina Gonzalez Hoyos</p> <p>La penalización salarial por maternidad en el empleo profesionalista en México » Cinthia Marquez Moranchel, Alicia Puyana Mutis</p> <p>Brechas de género en las trayectorias académicas: el rol del financiamiento competitivo y la evaluación por pares en Uruguay » Estefanía Galván, Victoria Tenenbaum, Cecilia Tomassini, Sofía Robaina, Mariana Fernandez Soto</p>
<p>ROUNDTABLE</p> <p>Economic Empowerment for LGBTI People: Using</p>			

<p>Feminist Economics to Get There</p> <p>Venue: 201D Panel Chair: Philip Crehan</p> <p>» Philip Crehan, Lucas Paoli Itaborahy, Hossein Cheaito, Karissa Jackson, Neela Ghosha</p>			
--	--	--	--

CONCURRENT SESSIONS 6 – FRIDAY 10 JULY | 3:10 pm - 4:40 pm

<p>ROUNDTABLE</p> <p>Retos Contemporáneos e Históricos de la Política Fiscal en México: un Análisis Desde la Economía Feminista</p> <p>Venue: 101D Panel Chair: Lucia Perez Fragoso</p> <p>» Lucia Perez Fragoso, Andrea Larios, Angelina Navarrete, Denisse Vélez</p>	<p>ROUNDTABLE</p> <p>Gender and Armed Conflict: Urgent Research Gaps (in the Context of Rising Fascism)</p> <p>Venue: 102D Panel Chair: Jennifer Olmsted</p> <p>» Jennifer Olmsted, Smita Ramnarain, Isabel Gironde, Hadeel Oazzaz, Cami Baron</p>	<p>PANEL</p> <p>Climate Change and Gendered Environmental Impacts</p> <p>Venue: 103D Panel Chair: Florence Muhanguzi</p> <p>'My Spirit Was Crushed': Gendered Insights from Farmers and Fishers in Kenya on Climate Shocks, Livelihood Disruptions, and Mental Wellbeing in Kenya » Sally Atieno Odunga, Wendy Janssens, Lia van Wesenbeeck</p> <p>Social Reproduction and Masculinities in Climate Adaptation: Participatory Pathways to Equitable Resilience in Uganda's Cattle Corridor » Florence Muhanguzi</p> <p>Gendered Vulnerabilities and Climate-Health Inequities in Sub-Saharan Africa: A Feminist Economic Analysis of Care, Labour, and Resilience » Millicent Awuku</p>	<p>PANEL</p> <p>Intersectional Dimensions of Care: Race and Migration</p> <p>Venue: 104D Panel Chair: Maria Quintero O</p> <p>Institutional Void, Moral Economy, and Consented Endurance: How Highly Educated Women Migrant Workers Come to Accept Exploitation » Hoyeon Lee</p> <p>'Leaving to survive': employment, care work, and economic precarity among Venezuelan migrant women in Brazil » Yasmin Haddad, Margarita Olivera</p> <p>Navigating Legal Protections and Social Barriers: The Intersection of Race, Gender, and Migration Status in the Lives of Highly Qualified Colombian Women in the UK » Maria Quintero O</p> <p>International Migration, Social Reproduction and</p>
---	---	--	--

		<p>Air Pollution and Labor Market Outcomes: A Gender-Based Analysis of Job-Seeking and Job Satisfaction » Yessi Rahmawati, Ryuto Minami, Hanna Jeoung</p>	<p>the Motherhood Penalty: A Case Study of Canadian Immigrant Mothers » Damilola Afolabi</p>
<p>PANEL</p> <p>Brechas de Género, Raza y Desigualdades</p> <p>Venue: 105D Panel Chair: Erika Raquel Badillo</p> <p>Brechas de implementación y revictimización en el programa de restitución de tierras en Colombia » Luisa María Claros Trujillo, Fanny Howland</p> <p>Brechas de género en la entrada, permanencia y cambio de programa en carreras STEM: evidencia para Bogotá 2019–2022 » Lorena Rojas Olivar</p> <p>Brecha de ingresos étnicas-raciales de mujeres en emprendimientos de subsistencia: evidencia para Colombia » Grey Ceballos García, Gustavo García Cruz, Erika Raquel Badillo</p> <p>¿Quién decide en casa? Percepción del poder de negociación y desigualdad de género en los hogares colombianos » Rachell Valentina Rodríguez Prada</p> <p>¿Y a las Mujeres Negras Quién las Cuenta?: Invisibilidad Estadística en el Sector Público Colombiano</p>	<p>PANEL</p> <p>Labor Markets, Time Poverty and Childcare</p> <p>Venue: 106D Panel Chair: Yazgi Genc</p> <p>The Crisis of Care and Women's Time Poverty in India » Vipasha Ray Haijog</p> <p>The Hidden Costs of Care: How Childcare Constraints Shape Women's Entrepreneurship » Daniela Behr, Felicia Siegrist</p> <p>Beyond Low Wages: Time Poverty Among Childcare Workers in the United States » Yazgi Genc</p> <p>Who Gets a Place? Inequality and Segmentation in Access to Childcare Services in Brazil » Tainá Pacheco, Clara Saliba, Almirês de Almeida, Luiza Nassif</p>	<p>PANEL</p> <p>Climate Justice, Policy, and Feminist Governance</p> <p>Venue: 107D Panel Chair: Hiba Bouazza</p> <p>Epistemic Injustice and the Failure of Inclusive Climate Policy » Imali Ngusale</p> <p>Gender-Neutral Thermal Policy and the Care Economy: A Feminist Economics Critique of Household Vulnerability in NCT-Delhi » Sneha Saha</p> <p>Understanding the macroeconomic implications of foreign investment versus domestic investment for a just climate transition: A Feminist Political Economy Approach » Gaya Sriskanthan</p> <p>Gender and Climate Change: A Bibliometric Analysis » Hiba Bouazza</p> <p>Socioeconomic and Gender Dynamics of Urban Resilience: Insights from Urban Green Spaces, Urban Agriculture, and the Water-Energy-Food Nexus in Sub-Saharan Africa » Adama Kane</p>	<p>PANEL</p> <p>Feminist Political Economy, Policy, and Digital Empowerment</p> <p>Venue: 108D Panel Chair: Nohely Alvarez</p> <p>The Role of Maya Women in Transnational Economic Communities and Digital Interventions » Nohely Alvarez</p> <p>Digital Transformation and Feminist Economics in the Global South » Nankyver Sarah Joseph, Peret Peter Yerse</p> <p>Electronic Banking and Financial Empowerment of Women in Africa's Informal Economy » Yvonne Appati</p>

<p>» Glenda Palacios, Eliana Castillo, Ana María Valencia Mosquera</p>			
<p>PANEL</p> <p>Intersectional Inequalities: Impact on Wages, Well Being and Opportunity</p> <p>Venue: 201D Panel Chair: Mieke Meurs</p> <p>Gender and Racial Wage Gap Dynamics in Brazil: Contributions of the Public Sector » Mieke Meurs, Luiza Nassif, Sara Costa Pedreira, Joao Pedro de Freitas Gomes</p> <p>Structural Determinants of Inequality: The Unequal Access to Healthcare in Brazil » Larissa Rosa, Clara Brenck, Bernardo Campolina</p> <p>Expanding Access to Banking and Financial Services: Determinants and Challenges for Transgender Inclusion in Delhi-NCR, India » Rameez Raja, Dr. Mohd Azam Khan</p> <p>Queer Kinship as Method in Social Reproduction Research » Noor Gadariné Lima Boudakian, Hossein Cheaito</p>	<p>ROUNDTABLE</p> <p>Reflexiones Sobre la Mentoría en IAFFE: el Grupo de Latinoamérica 2025</p> <p>Venue: 202D Panel Chair: Alma Espino</p> <p>» Lucilene Morandi, Alma Espino, Cristina Vieceli, Silvia Di Eunasio, Javiera Fuentes, Johanna Gómez Castro</p>	<p>PANEL</p> <p>Intrahousehold Bargaining and Household Well-being in the Global South</p> <p>Venue: 203D Panel Chair: Daniela Casale</p> <p>Gender stereotypes and the intrahousehold care distribution. An analysis for Colombia » Claudia Liceth Fajardo Hoyos, Paula Andrea Meneses Medina, Andrés Mauricio Gómez Sánchez</p> <p>Gender differences in well-being in South Africa: Decomposing the gender well-being paradox » Dorrit Posel, Daniela Casale, Adeola Oyenubi</p> <p>Producing Well-being, Not Output: A Feminist Reassessment of Household Production in India » Gargi Sridharan</p> <p>Wages for Housework: India's Experiment with Unconditional Cash Transfers to Women » Prabha Kotiswaran</p> <p>From Social Networks and Intrahousehold Bargaining to Inequality in Unpaid Care Work and Financial Health in Kenya » Kefa Simiyu</p>	<p>PANEL</p> <p>Cuidados Comunitarios en América Latina</p> <p>Venue: 204D Panel Chair: Natalia Moreno Salamanca</p> <p>Cuidados comunitarios y la política institucional, una lectura desde los Centros Comunitarios de Cuidados en Chile » Antonia Asenjo, Julieta Palma, Patricia Retamal, Camilo Sembler</p> <p>El cuidado comunitario como infraestructura feminista para políticas territoriales de paz » Sophie Legros</p> <p>Cuidado comunitario, territorio y política pública: una experiencia de fortalecimiento en el Pacífico colombiano » Natalia Escobar Váquiro, Paola Balanta, Luna Tobón, Alanis Bello</p> <p>Cuidado comunitario en territorios periurbanos: aprendizajes de un programa piloto para el fortalecimiento organizativo en Cartagena, Colombia » Daniela Casanova, Laura Gómez, Natalia Moreno, Katerine Lozano</p>
<p>ROUNDTABLE</p> <p>Tax Justice as Gender Justice: Feminist Economics and the UN Tax Convention</p>	<p>POSTER</p> <p>Poster Presentations</p> <p>Venue: Library</p>	<p>POSTER</p> <p>Poster Presentations</p> <p>Venue: Library</p>	<p>POSTER</p> <p>Poster Presentations</p> <p>Venue: Library</p>

<p>Venue: 205D Panel Chair: Maureen Mburu</p> <p>» Maureen Mburu, Verónica Grondona, Antonella Gervagi, Caren Grown, Camila (GI-ESCR)</p>	<p>Poster Jury: Sakiko Fukuda-Parr, Rebeca Gomez Betancourt, Lina Buchely</p> <p>Estructuras Latentes de la Economía del Cuidado en Colombia: una Aproximación con Modelos de Mezcla y Aprendizaje Estadístico » Laura Estefany Pardo Vargas, Jose Miguel Leon</p> <p>Invisible but Essential: Women, Informality, and Economic survival in Songea District, Tanzania. » Maria Matui</p> <p>Electrification as transformation? Exploring feminist and traditional economic perspectives » Míde Griffin</p> <p>The Gendered Time Penalty of Brooklyn's Missing Bike Lanes » Daniel DeWitz</p> <p>Do Community Health Workers Affect Gender-Based Violence? Evidence from India » Navantara Biswas, Devika Hazra</p> <p>Reimagining Rural Economies Through Feminist Economics in Dairy Value Chains in Zimbabwe » Lucy Mazingi</p>	<p>Poster Jury: Sakiko Fukuda-Parr, Rebeca Gomez Betancourt, Lina Buchely</p> <p>Manifiesto Económico de la Marcha de las Mujeres Negras (2025) » Luana Oliveira, Regimeire Maciel</p> <p>How can revenue administrations integrate gender equality? Evidence from Benin and Togo. » Eugénie Ribault</p> <p>Who Can Actually Go? Gender, Inequality, and Erasmus Take-Up After Selection » Helena Martinez Cabrera, Raúl Ríos Rodríguez, Adrián Dios Vicente</p> <p>Gender disparities in Brazilian household consumption: implications for exchange rate shocks perceptions » Maria Luíza Assis Cunha, Frederico Jayme Jr., Clara Brenck</p> <p>Who has time for this? A time-use analysis of women's leisure in India » Disha Trivedi</p>	<p>Poster Jury: Sakiko Fukuda-Parr, Rebeca Gomez Betancourt, Lina Buchely</p> <p>Digital Financial Inclusion and Women Entrepreneurs in Nigeria » Kamal Tasiu Abdullahi</p> <p>Macroeconomic Policy and Inequality: An Assessment of Social Spending in Brazil in the Period 2011 - 2021 » Laura Nascimento</p> <p>“Why would we work outside when it’s better at home?”: A decolonial feminist analysis of women’s perspectives on unpaid care work in Sylhet, Bangladesh » Sonia Hoque</p> <p>Rethinking Surrogacy and Global Care Chains: Gendered Discourses of Surrogacy Work and Feminist Transnational Care Chain Framework » Akira-Zen Meneses</p>
--	---	---	--

4:40pm – 5:00pm
Building D Corridor

Coffee & Tea Break

CONCURRENT SESSIONS 7 – FRIDAY 10 JULY | 5:00 pm - 6:30 pm

PANEL (HYBRID)	PANEL (HYBRID)	WORKSHOP (HYBRID)	ROUNDTABLE (HYBRID)
<p>Women's Land Rights, Agriculture, and Rural Development</p> <p>Venue: 101D Panel Chair: Manuel Francisco Moreno Bustamante</p> <p>Exploring the gender dimensions in postharvest food loss research: a systematic literature review » Manuel Francisco Moreno Bustamante, Monica Juliana Chavarro Rodriguez</p> <p>Women and the War on Drugs: A Decolonial Feminist Reading of Coca Growers' Everyday Experiences » Isabella Munoz</p> <p>Who Owns the Land? Law, Intersectionality, and Women's Land Rights in India » Sapna Sapna</p> <p>Vietnamese Politics: Authority, Power, and Grassroot Democracy, Experience of Rural Women Workers » Thuy Do</p> <p>Nature's Allies? Environmental Impacts of Women's Participation in Community Forest Management in Mexico » Francesca Eustacchi, Sandra Aguilar Gomez</p>	<p>La Política Industrial en Disputa: Propuestas desde la Economía Feminista para el Caso Latinoamericano</p> <p>Venue: 102D Panel Chair: Malena Vivanco</p> <p>Políticas de desarrollo productivo y reproducción social: una propuesta para México desde la Economía Feminista » Andrea Larios</p> <p>Industrialización verde y extractivismo en América Latina: tensiones entre la acumulación de capital y la sostenibilidad de la vida » Denisse Vélez</p> <p>Economía Feminista y política de innovación: el caso del Régimen de Economía del Conocimiento en Argentina » Malena Vivanco</p> <p>Hacia la definición de una política comercial feminista en tiempos convulsionados » Gabriela Nacht</p>	<p>IAFFE Mentoring Workshop</p> <p>Venue: 103D</p> <p>» Mentoring Program Committee</p>	<p>Beyond Neoliberalism: Feminist Wellbeing Economies, Strategic Disruption, and Transformative Responses to Global Crises</p> <p>Venue: 104D Panel Chair: Jessica Mandanda</p> <p>» Jessica Mandanda, Wangari Kinoti, Mwanahamisi Singano, Maria Jose Romero</p>

<p>ROUNDTABLE (HYBRID)</p> <p>Cuidados y Políticas Públicas Desde los Territorios: Actores, Experiencias y Disputas en América Latina</p> <p>Venue: 105D Panel Chair: Agustina Trajtemberg</p> <p>» Maria de Lourdes Velasco Dominguez, Malena Victoria Hopp, Emilia Gallagos, Javier Armando Pineda Duque, Agustina Trajtemberg, Jessica Alicia Veloz Cano</p>	<p>PANEL</p> <p>Gender-Based and Intimate Partner Violence</p> <p>Venue: 106D Panel Chair: Binitha V Thampi</p> <p>Does property ownership protect equally? Examining the racial differences in the association between women's property ownership and IPV in South Africa » Comfort Molefinvana</p> <p>Intimate Partner Violence and Women's Increased Contraceptive Use in India: Acts of Agency or Coping Strategy? » Shreemoyee Saha</p> <p>Rethinking State Responses to Gender-Based Violence: Evidence from Kerala, India » Binitha V Thampi</p> <p>Economic Disparity and the Dynamics of Domestic Violence: A Cross-Cultural Study » Nkiruka Akaenyi</p> <p>Beyond Work and Home: Are Women Caught between Care and Violence in India? » Steny Rapheal</p>	<p>ROUNDTABLE</p> <p>Formalización Laboral en el Trabajo Doméstico Remunerado en Colombia: Testimonios, Rutas, Avances y Retos Intersectoriales de este Subsector del Cuidado</p> <p>Venue: 107D Panel Chair: Andrea Londoño</p> <p>» Andrea Londoño</p>	<p>PANEL</p> <p>Shifting the Gendered Distribution of Unpaid Work: Trends and Policy Analyses from Colombia, India, and the United States</p> <p>Venue: 108D Panel Chair: Ariane Hegewisch</p> <p>The Elusive Domestic Revolution: Time Use and Gender Roles in Colombia » Juliana Jaramillo</p> <p>Impact of Reshaping Gender Norms on Time Use: Evidence from a Couple Counseling Intervention in India » Aashima Sinha, Debayan Pakrashi, Dil Rahut, Ashish K. Sedai, Tetsushi Sonobe</p> <p>Care as a privilege? Disparities in unpaid care work by gender, race and socio-economic status before and after COVID-19 » Ariane Hegewisch, Tanima Ahmed</p> <p>Understanding the Congestion Child Penalty: Can Remote Work Attenuate It? » Ilaria D'Angelis, Keren Horn</p>
<p>ROUNDTABLE</p> <p>Roundtable on Qualitative Methods in Feminist Economics</p> <p>Venue: 201D Panel Chair: Sheba Tejani</p>	<p>PANEL</p> <p>Agency, Governance, and Political Processes</p> <p>Venue: 202D Panel Chair: Cheryl Doss</p>	<p>WORKSHOP</p> <p>Using the Master's Tools: Evidence and Causality in Feminist Econometrics</p> <p>Venue: 203D Panel Chair: Naomi Friedman Sokuler & Wendy Sigle</p>	<p>ROUNDTABLE</p> <p>Sostenibilidad de los Sistemas de Cuidado en América Latina: Tensiones, Lecciones y Alianzas Para el Cambio Transformador</p>

<p>» Sheba Tejani, Carmen Diana Deere, Smita Ramnarain, Sara Stevano</p>	<p>Deciding not to decide: When is there power in not deciding? » Cheryl Doss, Marya Hillesland, Martina Querejeta, Serena Masino, Aletheia Donald</p> <p>Voluntarism as Welfare Infrastructure: Kudumbashree Women and the Gendered Externalisation of Welfare Costs » Anu George</p> <p>Displaced by the Rooppur Nuclear Power Plant: A Tale of Women's Separation from Environment and Economy » Shekh Sadia Akter</p> <p>Deconstructing the Promise: A Feminist Economic Investigation of the Ministry of Local Government in Empowering Women and Girls with Disabilities in Botswana » Keotshpile Pinkie Keakopa</p>	<p>» Naomi Friedman Sokuler, Wendy Sigle</p>	<p>Venue: 204D Panel Chair: Lorena Alcazar</p> <p>» Lorena Alcazar, Carolina Robino, Natalia Moreno Salamanca, Valentina Perrota, Karla Giacomini, Evelyn Baraké</p>
<p>WORKSHOP</p> <p>Activist and Academic? Rethinking Transformative Praxis Between Activism and Academia Through Amphibious Becoming</p> <p>Venue: 204D Panel Chair: Pato Laterra</p> <p>» Pato Laterra, Corina Rodriguez Enriquez, Cícero Braga</p>			

REGIONAL NETWORK EVENTS — FRIDAY 10 JULY | 6:30pm - 7:30 pm

These informal in-person gatherings bring together IAFFE regional networks to connect, share updates, and strengthen community ties.

GENERAL African Regional Network Venue: 106G	GENERAL Latin America & Caribbean Regional Network Venue: 408M	GENERAL Middle East & North Africa Regional Network Venue: 105G	GENERAL East & Southeast Asia Regional Network Venue: 108G
---	---	--	---

7:30pm – 10:00pm

Coliseo 1

Conference Dinner

Join fellow attendees for a festive conference dinner. A conference dinner ticket is required. Details for access to the dinner will be shared at the time of in-person registration.

The deadline to purchase a ticket is June 18th, via Exordo registration.

Please check the Conference Dinner whatsapp group to trade conference dinner tickets.

SATURDAY, 11 JULY 2026

CONCURRENT SESSIONS 8 – SATURDAY 11 JULY | 9:15 am - 10:45 am

ROUNDTABLE (HYBRID)	PANEL (HYBRID)	PANEL (HYBRID)	ROUNDTABLE (HYBRID)
<p>Seeds of Transformation for a Post-Neoliberal World: Fostering the Feminist Public Intellectuals of Tomorrow</p> <p>Venue: 101D Panel Chair: Maaza Seyoum</p> <p>» Paulina Sicius, Lee Badgett, Naomi Friedman Sokuler, Lygia Sabbag Fares, Noelia Méndez Santolaria, Leigh-Ann Worrell, Aida Namukose</p>	<p>Reclaiming Care as Public Policy</p> <p>Venue: 102D Panel Chair: Faustina Obeng Adomaa</p> <p>From Commitment to Care: When National Care Policies Translate into Action » Juhi Kasan</p> <p>How State Policies Discipline Households and Communities; Insights from a Review of Ghana's Care Policies » Faustina Obeng Adomaa</p> <p>Transforming the Care Economy in East Africa: Evidence on Reducing and Redistributing Women's Unpaid Care Work » Annet Mulema</p> <p>Who Shapes Care Policy? A Comparative Study of Care Policy Networks in Colombia and Scotland » Carolina Herrera-Cano, Nina Teasdale</p>	<p>Feminist Political Economies of Survival and Sovereignty in Africa</p> <p>Venue: 103D Panel Chair: Millicent Awuku</p> <p>The Invisible Care Subsidy: Indigenous Knowledge Systems as Unpaid Climate Adaptation Labor in Rural Kenya » Angela Opondoh, Mulala Simatele</p> <p>Care Labor as an Ecological Buffer: Survival Strategies and Social Reproduction in Rural Sierra Leone » Sahr Korfeh</p> <p>Towards African Scientific Sovereignty: Decolonizing Climate Economics and Carbon Markets in the DRC » Gaston Alimasi</p> <p>Climate Change-Induced Loss and Damage in Kenya: A Feminist Economics Analysis of Women's Economic Vulnerabilities and Policy Gaps » Rosebell Otieno</p> <p>Climate Change, Extreme Weather, and Intimate Partner Violence in Ghana » Millicent Awuku</p>	<p>Is There a Global South Feminist Economics?</p> <p>Venue: 104D Panel Chair: Ritu Verma</p> <p>» Ritu Verma, Chipo Hungwe, Myrah Nerine Butt, Alison Vasconez, Anam Butt, Jennifer Cohen</p>

<p>PANEL (HYBRID)</p> <p>Financing Care and Women's Rights Through a Rights-based Approach to Taxation</p> <p>Venue: 105D Panel Chair: Mariama Williams</p> <p>Bled Dry: How tax abuse, illicit financial flows and debt affect women and girls in Africa » Layne Hofman, Martha Hungwe</p> <p>Debt2Health-4Gender Equality, Reimagining Sovereign Debt through a Feminist Lens » Stellah Bosire</p> <p>Fiscal Policy, Public Services and the IMF: IMF country advice on tax and spending » Roos Saalbrink</p> <p>Prioritizing people in Fiscal Policy » Camila (GI-ESCR)</p> <p>Placing a Feminist Lens on Ghana's Tax Policymaking » Gloria Afful-Mensah</p>	<p>ROUNDTABLE</p> <p>Pioneering Feminist Economists from the Global South</p> <p>Venue: 106D Panel Chair: Sumangala Damodaran</p> <p>» Sumangala Damodaran, Mayada Hassanain, Natalia Flores Garrido, Dipa Sinha, Dede Amanor-Wilks, Agostina Costantino, Liepolla Pheko</p>	<p>WORKSHOP</p> <p>Economía Feminista en Movimiento: Taller sobre el Manifiesto Económico de la Marcha de las Mujeres Negras por Reparación y Buen Vivir</p> <p>Venue: 107D Panel Chair: Gabriela Mendes Chaves</p> <p>» Gabriela Mendes Chaves</p>	<p>PANEL</p> <p>La Economía Feminista Como Campo en América Latina: Trayectorias, Redes y Tensiones</p> <p>Venue: 108D Panel Chair: Camila Orozco Espinel</p> <p>La economía feminista como campo en disputa: trayectorias, ideas y barreras en América Latina » Luciana Rolón, Camila Barón</p> <p>Los orígenes de la economía feminista en la segunda ola feminista, 1970-1980, en Perú » Gabriela Adrianzén García Bedoya</p> <p>¿Economía Feminista Popular?: Trayectoria y Significados de la Práctica Económica de la Organización Femenina Popular » Kathryn Franchellys Orcasita Benitez</p> <p>Hacia una historia de la Economía Feminista en Colombia » Camila Orozco Espinel</p>
<p>ROUNDTABLE</p> <p>Subjetividades Neoliberales: Voces Contrainsurgentes de Movimientos Sociales, el Feminismo Comunitario y el Pensamiento Prehispánico para</p>	<p>PANEL</p> <p>Gender Disparities in Income, Wealth, Savings and Pensions</p> <p>Venue: 202D Panel Chair: Thomas Masterson</p> <p>Shifting Burdens: A Feminist Political Economy Critique of</p>	<p>ROUNDTABLE</p> <p>El Trabajo de Cuidado en la Justicia Económica Feminista. Una Mirada Desde el Sur Global</p> <p>Venue: 203D Panel Chair: Isabela Boada Guglielmi</p>	<p>PANEL</p> <p>Otras Epistemologías, Resistencia y Liderazgo</p> <p>Venue: 204D Panel Chair: Liliana Gallego Duque</p> <p>Dejar atrás el capitalocentrismo, reivindicar la diversidad</p>

<p>Repensar la Economía Feminista.</p> <p>Venue: 201D Panel Chair: Leandro Velasco Cicchitti</p> <p>» Leandro Velasco Cicchitti, Brenda Brown, Angela Lucero, Minh Tam Bui</p>	<p>India's New Pension Regime » Karthik Manickam</p> <p>Gender disparities in lifetime earnings and old-age economic security in Ghana and South Africa » Thomas Masterson, Ajit Zacharias, Aashima Sinha, Oduro Abena, Nthabiseng Moleko</p> <p>Gendered Saving Dynamics and Remittances in Colombia » Patricia Sanchez Perez, Ricardo J. Salas Diaz</p> <p>Gender Certification, Pay Transparency, and Transformative Change. A Feminist Political Economy Analysis of Italy and Spain » Fabiana Ciccarella</p> <p>Trends and Determinants of Income and Wealth Inequality among Women in India, 1992–2021 » Pragyan Monalisa Sahoo</p>	<p>» Isabela Boada Guglielmi, Alma Colin Colin, Nora Goren, Verónica Serafini, Carlos Perez</p>	<p>económica en América Latina » Natalia Castillo</p> <p>Mujeres indígenas y conocimiento: ideas para un cambio transformador » Liliana Gallego Duque</p> <p>Cuidar para protestar: cuidadoras públicas y economía feminista en tiempos de crisis democrática. » Maria Grazia Ruiz-Pasapera</p> <p>Territorio, Identidad y Resistencia: el Protagonismo de las Mujeres Quilombolas en la Comunidad Dona Juscelina – TO » Anna Niwslly Da Silva Oliveira</p>
<p>ROUNDTABLE Lessons From Social Movements: Translating Feminist Economic Principles into Policy and Institutional Change</p> <p>Venue: 205D Panel Chair: Deepta Chopra</p> <p>» Ruhil Iyer, Wangari Kinoti, Sitabile Dewa, Pranati Mohanraj, Jean Chrysostome Ndizeve, Deepta Chopra</p>			

10:45am – 11:15am
Building D Corridor

Coffee & Tea Break

11:15am – 11:30am

Auditorio Manuelita

Poster Awards

11:30am – 1:00am

Auditorio Manuelita
Livestreamed

Closing Plenary

Feminist Economics and the New Politics of Gender Equality

Panelists: Flavia Biroli (University of Brasília, Brazil), Nancy Folbre (University of Massachusetts Amherst, USA), and Sheba Tejani (King's College, London) | The session is chaired by IAFFE President & Board Chair Sakiko Fukuda-Parr (The New School, New York, USA)

An important shift in the politics of gender justice over the last decade has been the rise of anti-gender equality organizations and movements seeking to reverse the advances made over the last decades, or “gender backlash”. Research and activist communities have responded by initiating studies and debates. By now there is a rich literature and a better understanding of this phenomenon as a coordinated and organized transactional movement. Much of the research and debate has focused on the nature of these movements and their politics; actors and structures, motivations, ideology, interests, discourses, and alliances. Less attention has been paid to the economic dimensions of the phenomenon.

This panel focuses on economic aspects of the gender backlash, as drivers, dynamics and consequences. Drawing on movements across regions, speakers will explore topics such as: backlash as a response to neoliberal globalisation and its consequences for gender roles and relations, gender and the new forms of capitalism in the 21st century, illiberalism and pro-natalist policy agendas, consequences for the care economy and transformative care policy frameworks, reflections on the agenda for feminist economics research and activism, among others.



SIDE EVENTS

Platform for Action for a Feminist Economy

Venue: **Room to be confirmed**

Date & Time: **July 8, 2026 – 8:00am - 10:00am**

Organized by: **Friedrich Ebert Stiftung, DAWN Feminist, OXFAM**

This event will present the Platform for Action for a Feminist Economy, a regional initiative that brings together academics, activists, and organizations from Latin America and the Caribbean to strengthen a common agenda around fiscal justice, the financing of care work, and the transformation of economic policies from a feminist perspective. The session will provide an overview of the progress of feminist economics in the region, the current context of debates on taxation and financing, and the Platform's objectives as a space for regional coordination and advocacy.

The event will include the presentation of the Platform's call for participation, a dialogue with attendees, and a discussion on the next steps to strengthen this collective agenda in Latin America and the Caribbean.

Building Feminist Movements on Tax Justice for a Gender-Transformative, Climate-Just Economy and a UN Tax Convention

Venue: **Auditorium Carlos Arcesio Paz (Building D, 1st Floor)**

Date & Time: **July 8, 2026 – 10:00am - 5:00pm**

Organized by: **ActionAid International, Akina Mama wa Afrika, Center for Economic and Social Rights (CESR), Global Initiative for Economic, Social and Cultural Rights (GI-ESCR), the Independent Commission for the Reform of International Corporate Taxation (ICRICT), MENAFem Movement for Economic Development and Ecological Justice, Tax Justice Network, the Women's Environment and Development Organization (WEDO), Development Alternatives with Women for a New Era (DAWN), Tax and Education**

This [all-day pre-conference workshop](#) will bring together feminist economists, civil society advocates, and tax experts for a strategic discussion on tax and gender equality, including links to climate action, in light of the ongoing negotiations for the UN Framework Convention on International Tax Cooperation (UN FCITC), a once-in-a-generation opportunity to reshape global tax rules by mid-2027. With current tax systems disproportionately harming women and gender-diverse people, who often pay more in taxes and benefit less, the workshop aims to build a collective understanding of these impacts, develop sharp intersectional analysis across tax, gender, and climate justice, and identify opportunities for feminist academic research and advocacy at the UN to advance fairer, more progressive tax systems that expand fiscal space, especially for Global South countries, and support universal public services and climate action.

Approximately 80 participants will collectively strategize how best to use the opportunity of the UN Framework Convention on International Tax Cooperation, as well as the new Tax and Gender Subcommittee under the UN Tax Committee, to advance fairer tax systems and bolster the economic and social rights of women and gender-diverse people, in a context of both conflict and climate catastrophe.

Registration link: <https://forms.gle/F8FapZTkhHUw48sm7>

Civil Society Discussions and Recommendations for a Sustainable Care Policy in Colombia

Venue: **Room to be confirmed**

Date & Time: **July 8, 2026 – 2:30pm - 5:30am**

Organized by: **OXFAM Colombia**

This event, led by Oxfam Colombia, will bring together representatives from community care organizations, academia, feminist movements, and public institutions to discuss different approaches and experiences related to care and its role in reducing inequalities.

Based on this exchange, participants will collectively develop recommendations and key messages to strengthen a sustainable care agenda in Colombia. The outcomes of the dialogue will serve as input for advocacy on future public policies and to promote the recognition, funding, and sustainability of care systems in the country.

Documentary Presentation: “Working Girls”

Venue: **Auditorium Carlos Arcesio Paz (Building D, 1st Floor)**

Date & Time: **July 8, 2026 – 7:00pm - 10:00pm**

As part of the project [Laws of Social Reproduction](#), a 2 hour documentary titled [Working Girls](#) was produced by the feminist film maker Paromita Vohra in collaboration with Prabha Kotiswaran, based on a research to documents the lives of women in India in sex work, erotic dancing, surrogacy, egg donation, paid domestic work and unpaid domestic work.

The film will be screened at the Auditorium Carlos Arcesio Paz (Building D, 1st Floor) on the evening of July 8th between 6-9pm with a discussion with the curator of the Cali International Film Festival Alejandro Martín Maldonado.

STAFF SUPPORT & IMPORTANT CONTACTS

General Inquiries	iaffe@iaffe.org
Conference Inquiries	conference@iaffe.org
Virtual Conference Support	remote-support@iaffe.org
Media Inquiries	wkhonziwe@iaffe.org iaffe@iaffe.org

Important Contacts

Emergencies:

123

National emergency line for medical assistance, police and fire department.

IAFFE Local Team:

WhatsApp: +57 310 7699901

Email: ymquiceno@icesi.edu.co

For logistics, campus guidance, rooms, schedule, transportation or lost items.

Icesi University:

Calle 18 No. 122-135, Pance, Cali – Colombia

Tel: +57 (602) 555 2334

Cel: +57 300 910 8606

Email: ventanillaunicaicesi@icesi.edu.co

Cali Tourism Office:

Tel: +57 602 489 06 07

Email: secretariadeturismo@cali.gov.co

Tourist assistance and city information.

Migration Office – Cali:

Av. 3A Norte # 50N-20, barrio La Flora

Tel: +57 300 913 39 92

Monday to Friday: 8:00 a.m.–12:00 m. y 1:00 p.m.–5:00 p.m.

34th IAFFE Annual Conference

Feminist Economics and Transformative Change: Ideas, Policies and Movements

June 26 – July 11, 2026 | Cali, Colombia

Artwork:: **"MUJER"** by Tatiana Olaya

