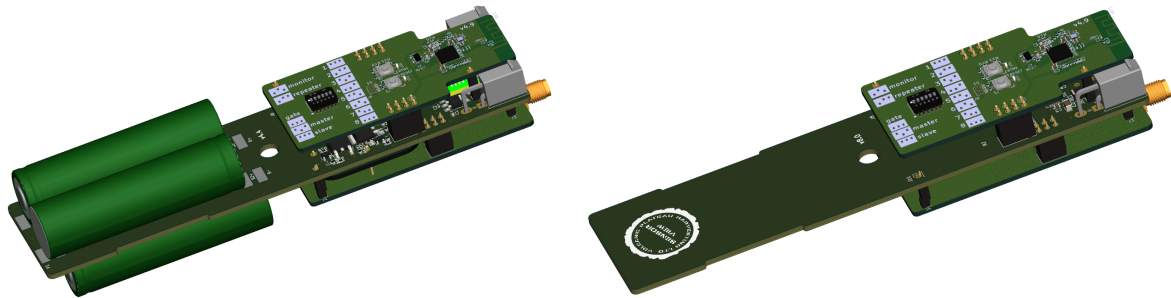
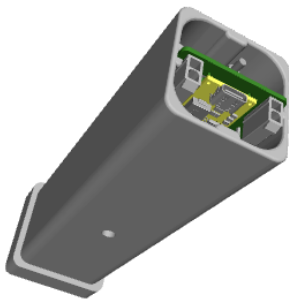


actView Product Description

Brand: sensorView
Model: actView
Version: AV494420 & AV498120

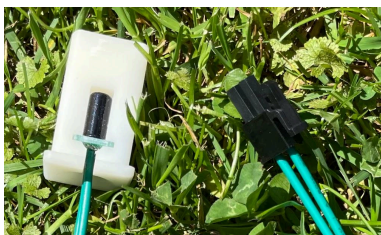
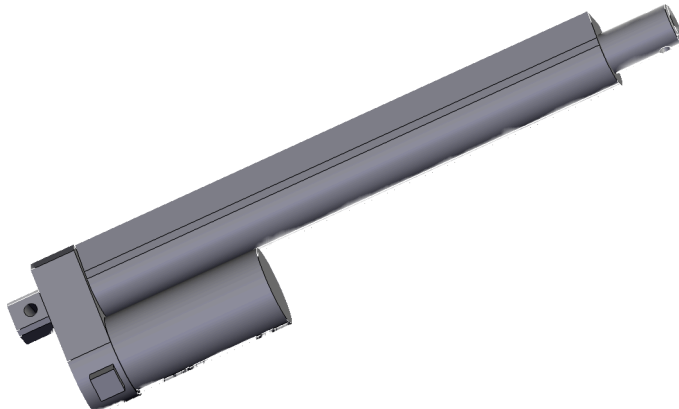


The actView AV494420 (controller) & AV498120 (monitor) are part of a radio control system that allows the remote operation of a linear actuator. The linear actuator moves the barrier arms up and down.



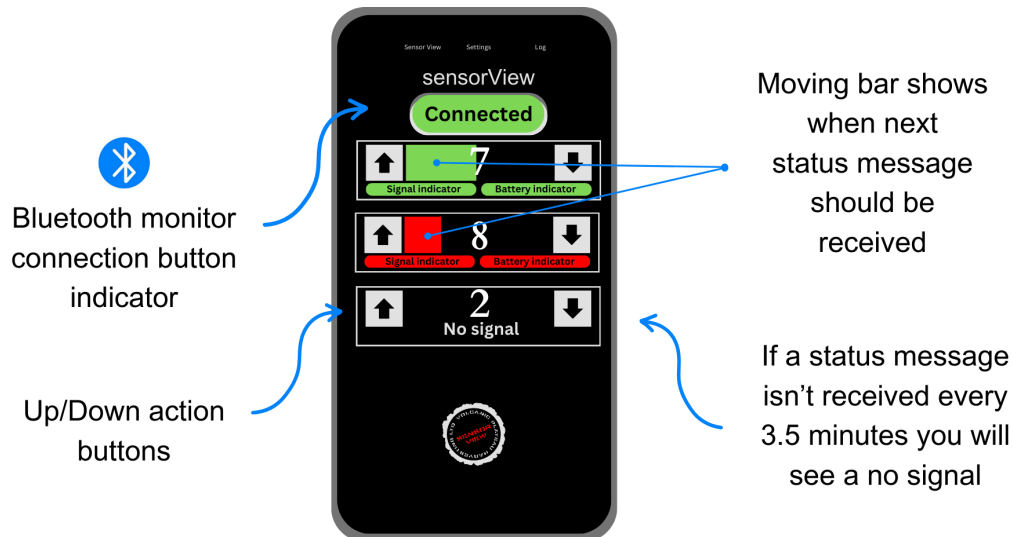
The radio device case protects the radio from the elements and the two are held together by a 6mm pin. It is used in conjunction with the device case bracket which allows it to be mounted in a variety of ways. The radio device case has a metal pad on the top of the case that provides a suitable surface for the magnetic antenna.

The operator controls the linear actuator via the sensorView phone app. The sensorView phone app connects via bluetooth to the bluetooth monitor.



The tilt sensors are inserted into the end of the barrier arms at the hinge point next to the barrier controllers. The sensors indicate whether the barriers arms are up or down at either side of a 45 degree angle.

The LoRa radio magnetic antenna is attached to the pad on the device case when used with a controller and is ideally attached to the roof of the machine when used with the bluetooth monitor.



The bluetooth monitor communicates with the barrier arm controllers via the LoRa radio.

sensorView Barrier Arm System

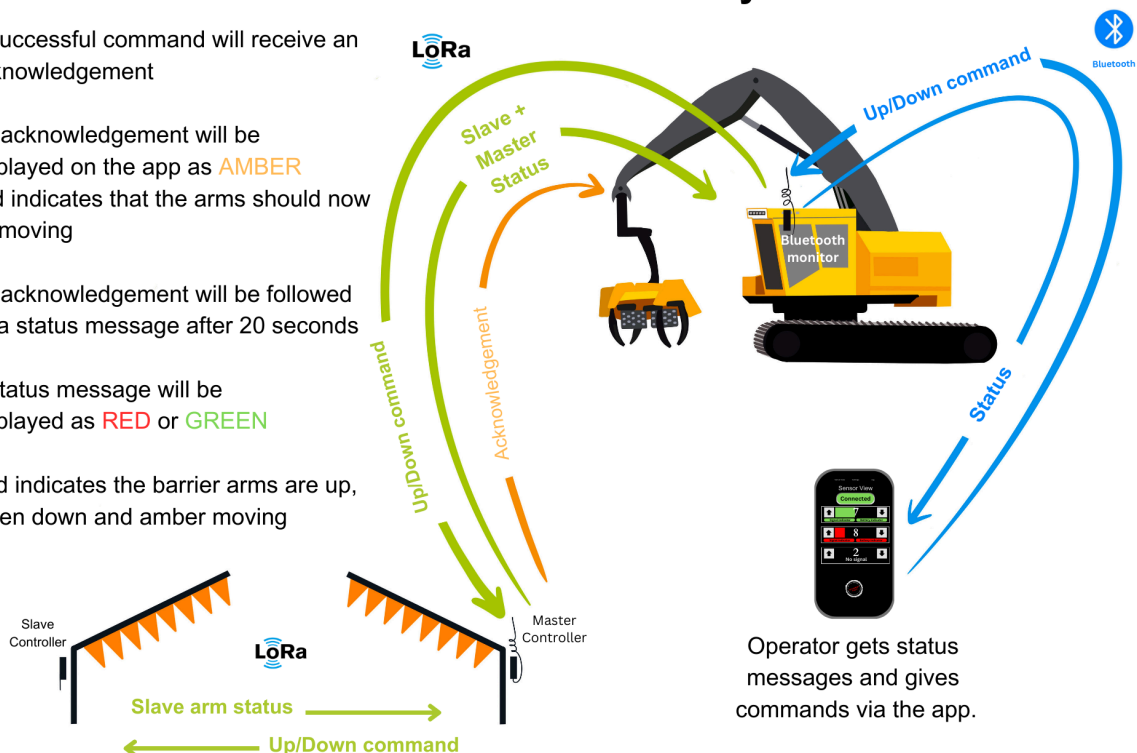
A successful command will receive an acknowledgement

An acknowledgement will be displayed on the app as **AMBER** and indicates that the arms should now be moving

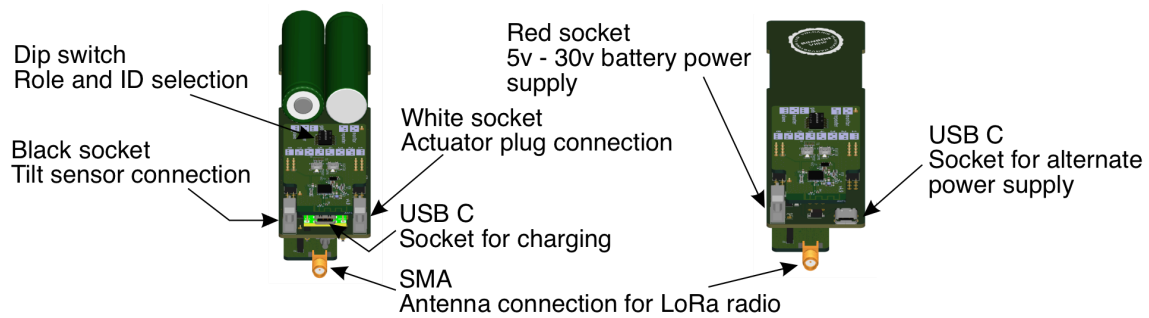
An acknowledgement will be followed by a status message after 20 seconds

A status message will be displayed as **RED** or **GREEN**

Red indicates the barrier arms are up, green down and amber moving



Connections



Specifics

LoRa radio: 917 - 925 MHz @ 21.9 dBm

BLE radio: 2.4 - 2.48 GHz @ 4.0 dBm

AV494420 output voltage: Nominal 14.8v @ ~2A

AV498120 input voltage: 5v - 30v

Maximum barrier arms: 8