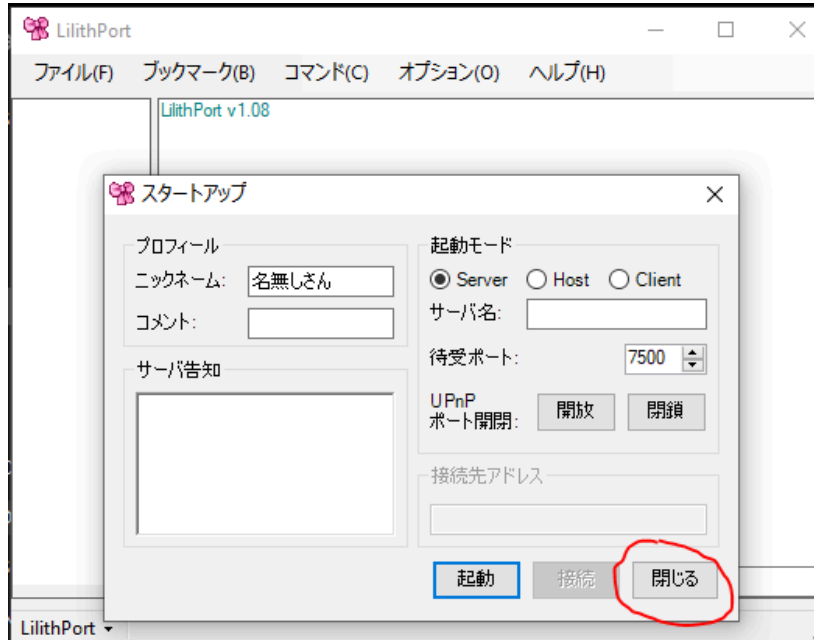


Once again you can get lilith port here:

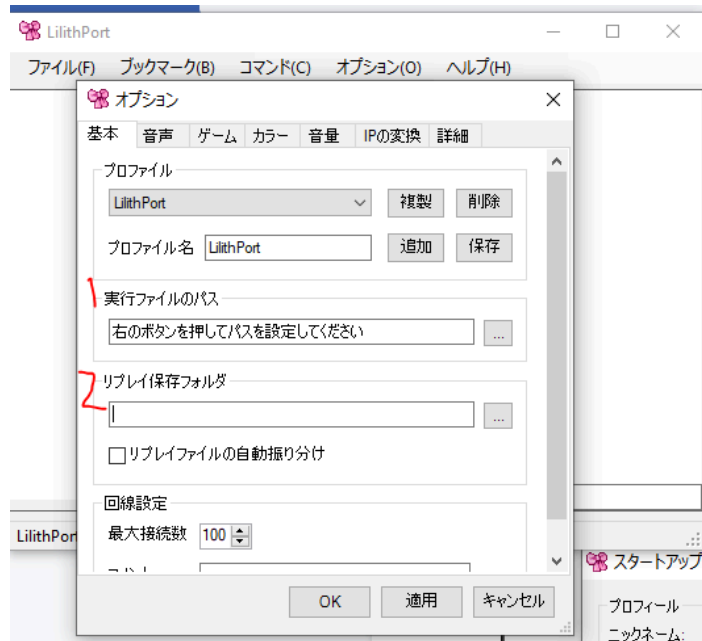
https://drive.google.com/file/d/1uTc8l8lmlNaFQmBP4QerXxWSFyzGz25X/view?usp=share_link

After you download and open for the first time lilith port you will be greeted with this screen



Click on the highlighted button

After you will be presented with this screen asking you to set your path to an executable file

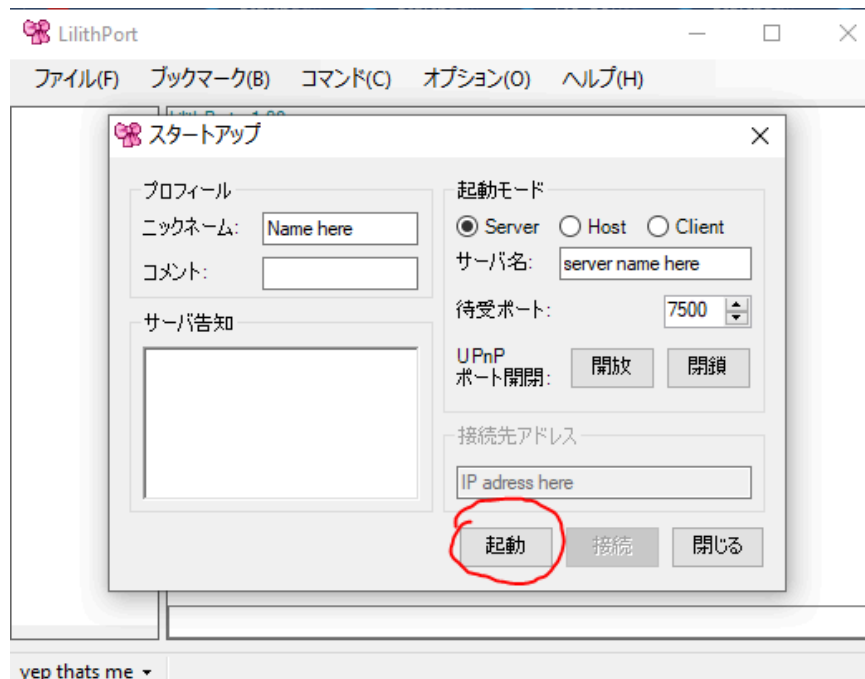


1 is the path for your executable which should just be "WonderfulWorld_ver_0945"

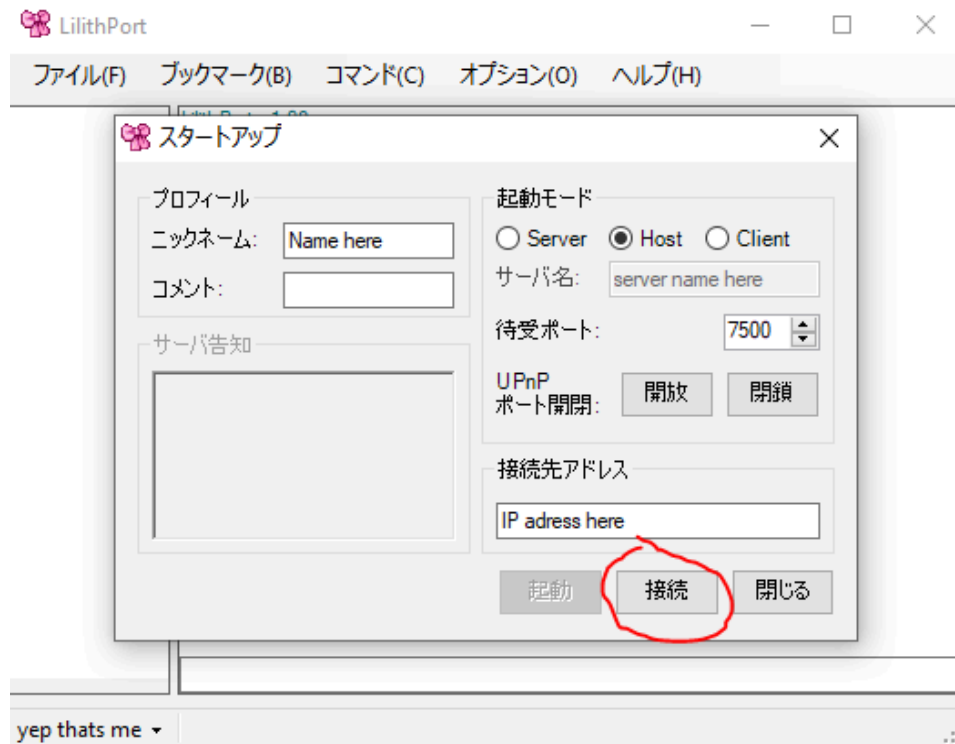
2 is your replay folder, you don't need to set this

After you have done this close lilith port and open it again you can set your name on the top left.

To host click on server write down the name of your server and adjust the port to whichever port you forwarded and then click on the highlighted button to start hosting



To join a someone click on HOST (yes I know don't question it, it is what it is)



After you put in the IP address click the highlighted button to join

To actually fight each other simply just right click the opponents name and click on the first option

