

Picasa and Google+ Web Albums

<https://picasaweb.google.com>

<https://plus.google.com>

[Picasaweb tutorials](#)

[Google+ tutorials](#)

[Picasa vs. Google Drive vs. Google+](#)

[Photo Size](#)

[Upload Photos](#)

[Edit Album](#)

[Edit Photo](#)

[Image URL](#)

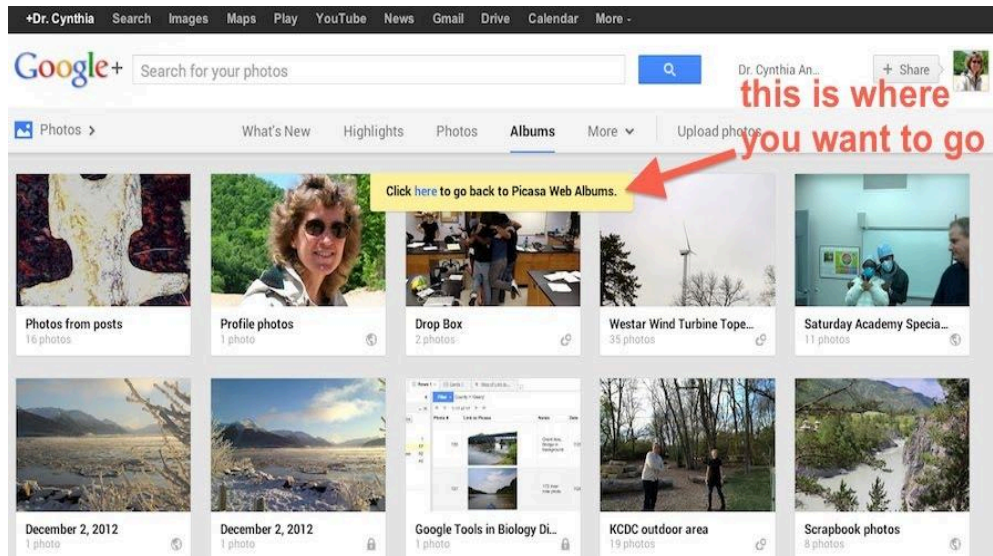
[Album Map and KML](#)

Picasa vs. Google Drive vs. Google+

Picasaweb is a much better way to store photographs than Google Drive. It is easy to make [embeddable slideshows using Picasaweb](#), and if you have GPS embedded in your photos Picasaweb will automatically place the photos in the [correct location on a Google Map](#). It is very useful to be able to bulk upload jpg files into an album and to automatically create a slideshow from your jpg files. You cannot currently create a slideshow from uploaded jpg files stored as jpgs in your Google Drive, and if you use Presentations to create a slideshow within Google Drive you have to create each slide individually (you can't bulk upload a large number of photos at once and have them turned automatically into slides). This is a serious limitation and why I do not recommend storing jpg files in Google Drive if you wish to create slideshows.

Picasa is being integrated into Google+ and as a result it is taking on more of the characteristics of a social media site. At the same time, G+ photos are taking on more of the functionality of Picasa- but it takes time, and not all of the Picasa tools are currently available on the G+ photo platform. This means that we have to click on the "Return to Picasa" message when we are redirected to G+, so keep an eye on the top of the page for a message when you navigate through the website.

Most of the directions in this tutorial are for Picasa, because G+ does not yet allow you to download photos embedded in maps.



Insert Slideshow into Google Site

Unlike Google Drive, the G+ photo platform allows you to bulk upload your jpgs and view your photos as a slideshow using their viewer, and now you can also embed the slideshow on your Google Site. To insert a slideshow, go to your Google Site, get into Edit mode and click Insert>Google+>Photo Album. The photo album will appear as a slideshow. You can change the settings to have it either automatically advance or manually advance, and you can set the size of the slideshow. It will use the entire album for the slideshow, which makes it a very fast and easy way to create slideshows from bulk uploaded photos (much easier than doing it in Google Presentations, and it is not even possible with images stored in Google Drive).

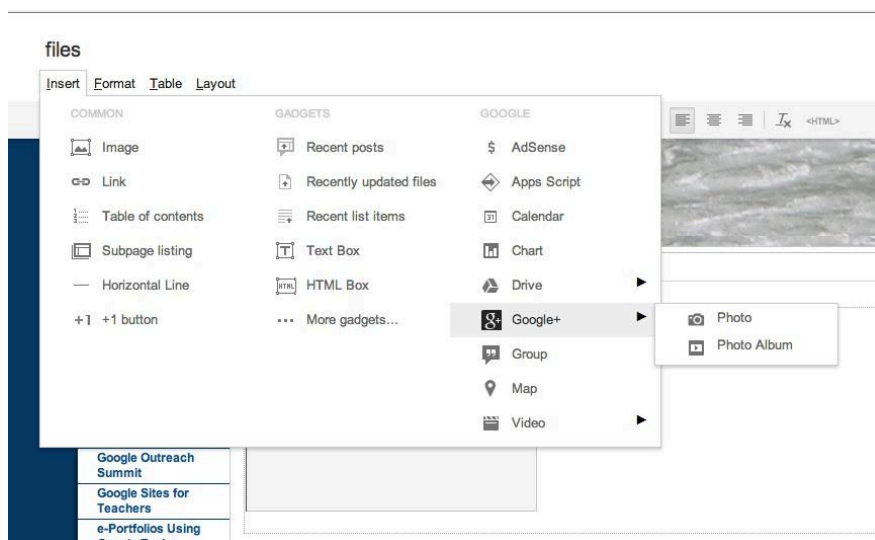
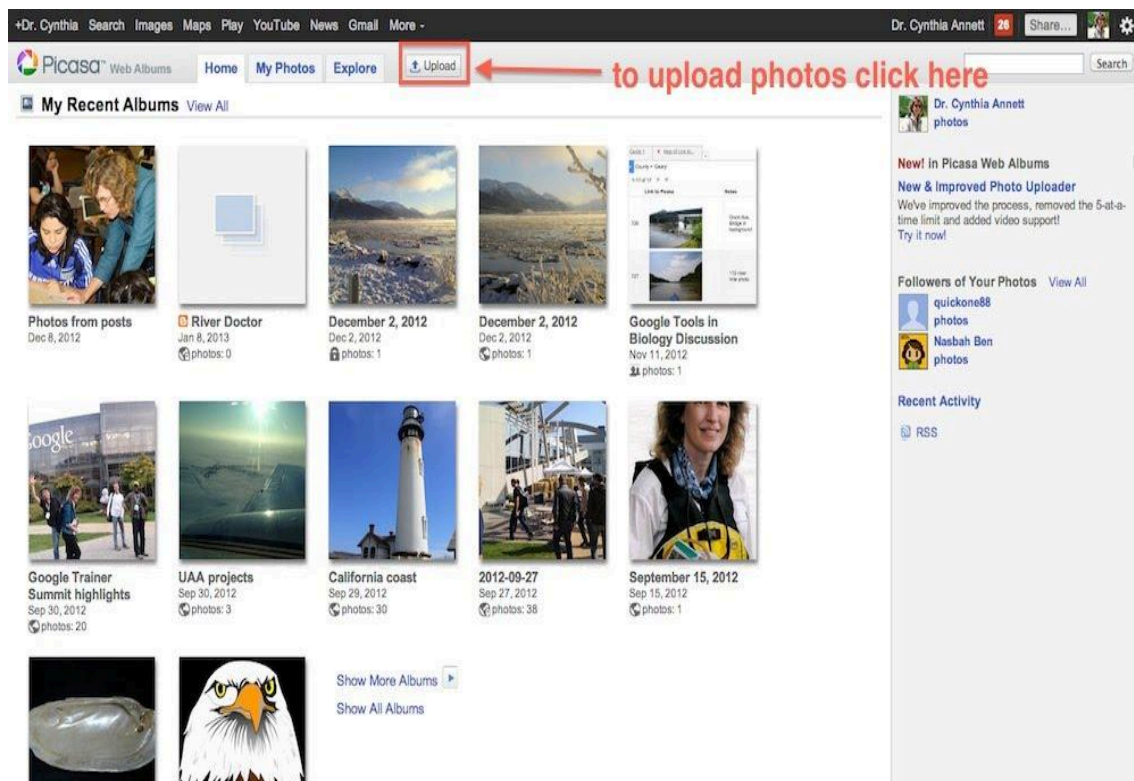


Photo Size

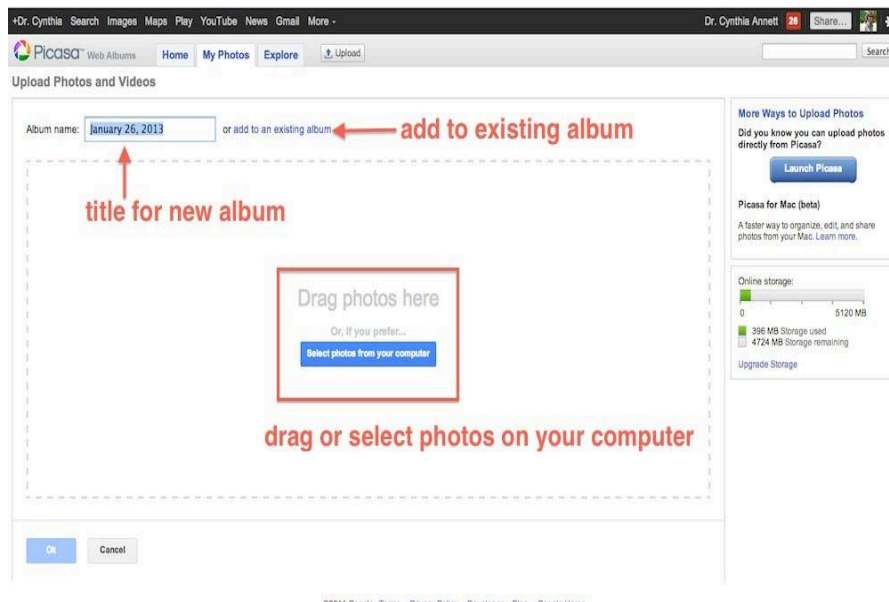
Make sure that you reduce the file size of your photos before you upload them to Picasaweb. You don't want to be uploading large numbers of big files (photos can be 1Mb, 2Mb, even 5Mb files) because they will be difficult to view online. The best file size is around 600-800 pixels (usually around 100-200 Kb). Smaller files will be easy to view, will open quickly on your website or map, and are generally more manageable online.

Upload Photos

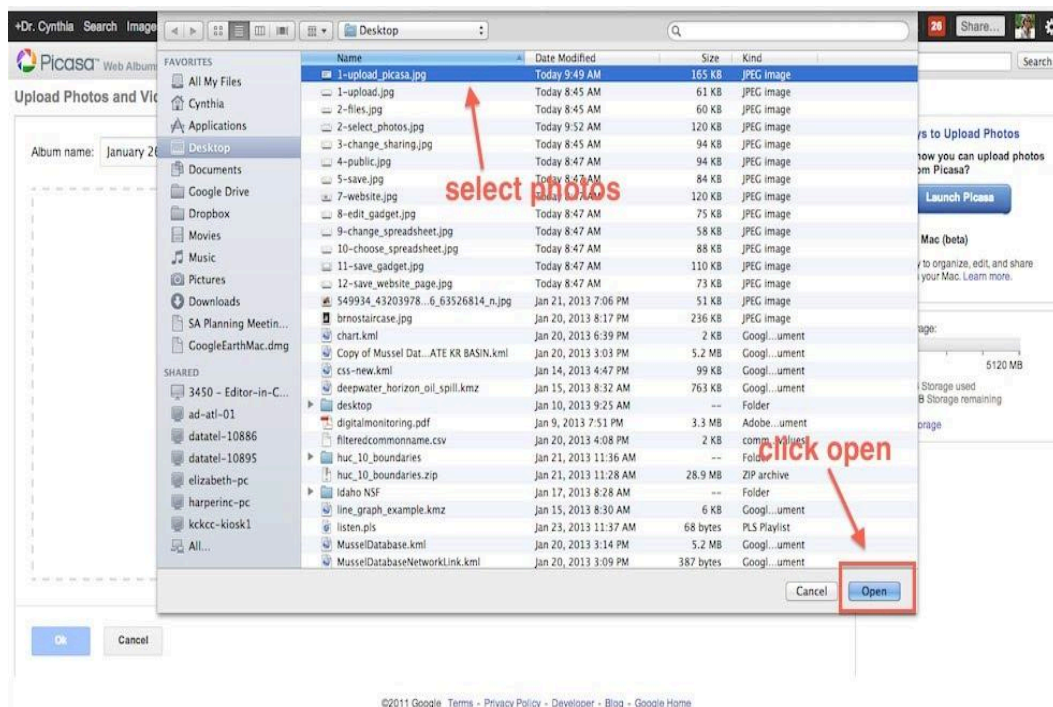
Go to <https://picasaweb.google.com/home> and sign into your Google Account. Click on the redirect to go to Picasa Web Albums. To add photos, click on the upload button.



Then you can either add photos to an album that you already made, or you can create a new album.

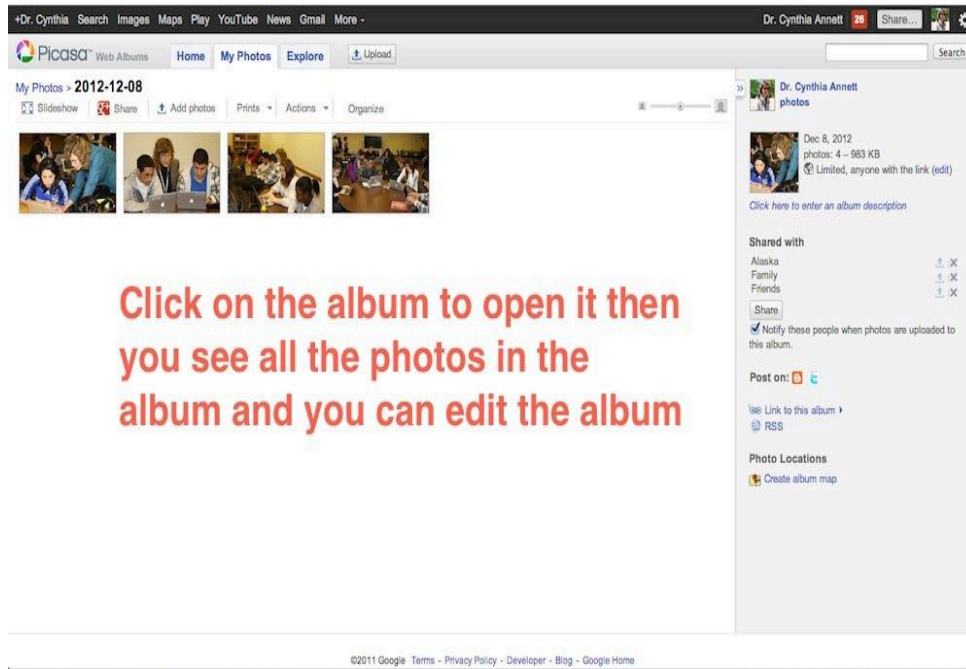


You can either drag your photos from your computer to the box, or you can select photos from your computer (you can upload a batch of photos by clicking on the first one, then Shift Click on the last one to highlight all of them). Once you select your photos to upload click Open

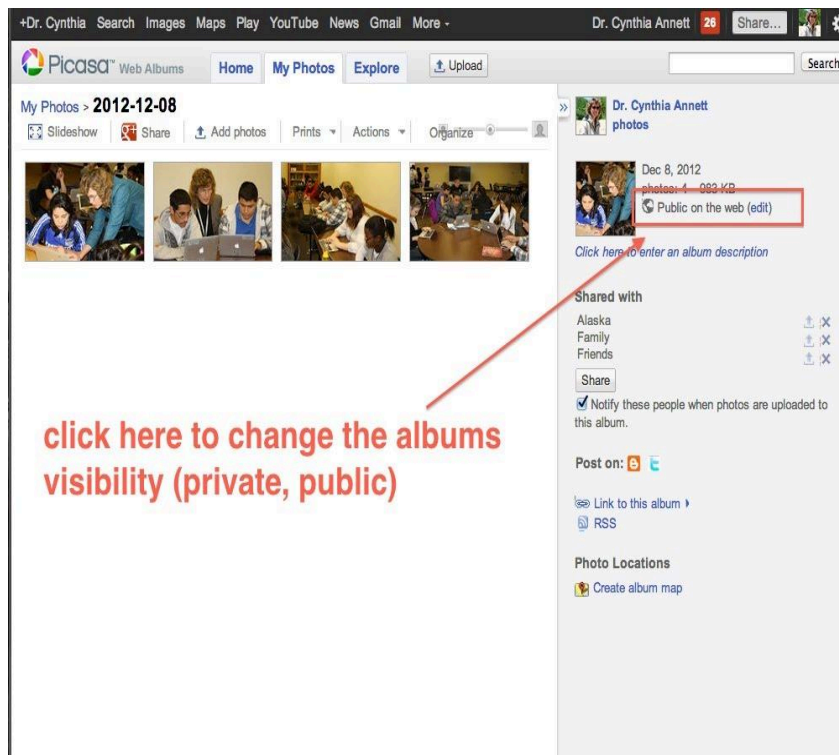


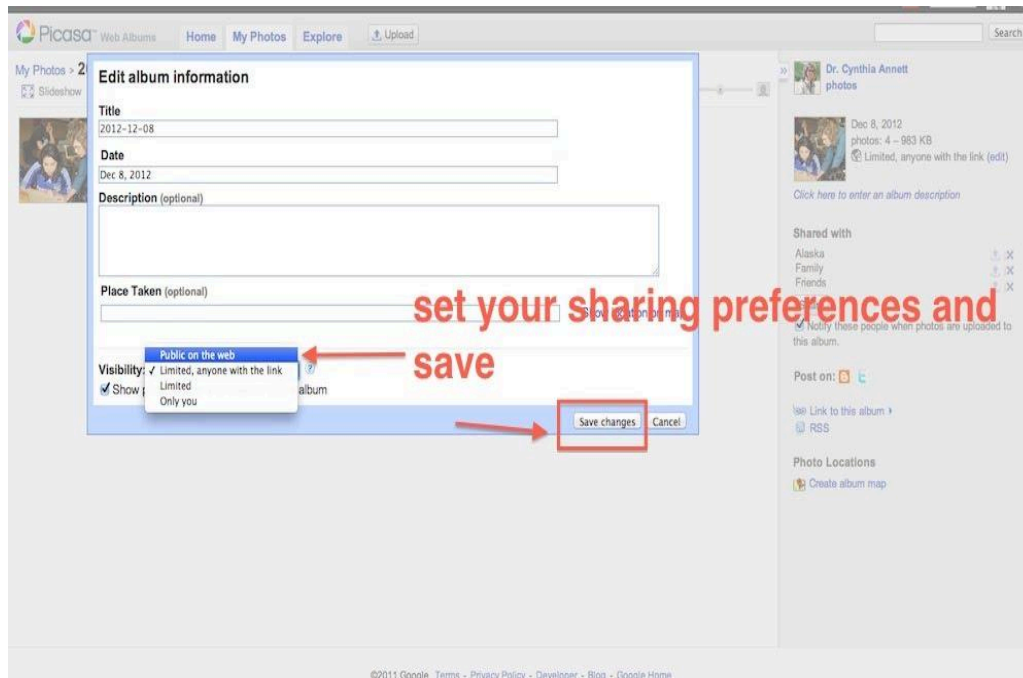
Edit Album

Once you have created an album, you can open it by clicking on the album



The default is for new albums to be set on private. To make an album public, click edit on the right sidebar in the pop-up window select Public on the web and save changes.





Edit Photo

To edit an individual photo, click on the photo thumbnail in the album and then use the commands under the dropdown

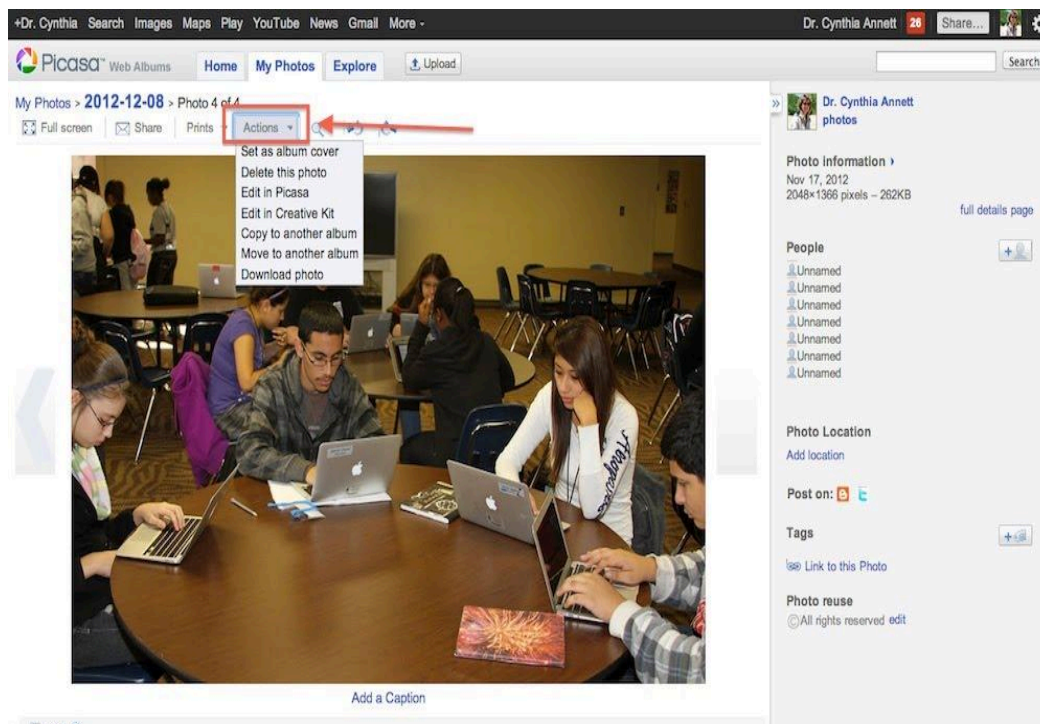


Image URL

There is a glitch in the Picasaweb Album program and you can't use the obvious link button to link the photo. Instead, click on the photo to enlarge it (not the thumbnail in the album) and then right click (PC) or control click (Mac) on the image itself to get a pop-up that allows you to copy the image url. Use that url when you want to add the image to a Google Site, Google Map/Earth or Google Drive tool (Document, Presentation, Spreadsheet, Fusion Table).



Album Map and KML

Picasa gives us a fast and easy way to create a map with lots of photos-- if you want to bulk upload hundreds of photos like we did for our [River Inventory project](#) this is the only way to do it quickly (you can see one of the maps embedded in the page in the Google Sites section above).

Picasa™ Web Albums Home My Photos Explore Upload

My Photos > Scrapbook Photos

Slideshow Share Add photos Prints Actions Organize

Elkhorn Slough (by canoe)

Dr. Cynthia Annett photos

Sep 23, 2011
photos: 8 – 7 MB
Public on the web

Album for scrapbook photos

Share

☒ Notify these people when photos are uploaded to this album.

Post on:

[Link to this album](#) RSS

Photo Locations

©2013 Google - Map Data - Terms of Use

[View map](#)
[View in Google Earth](#)

to get kml for mapped photos

©2011 Google Terms - Privacy Policy - Developer - Blog - Google Home

To View a photo on a Google Map click on the “View album map” link. To see the photo details (including the lat and long) click on “full details page.”

Picasa™ Web Albums Home My Photos Explore Upload

My Photos > Scrapbook Photos > Photo 5 of 8

Full screen Share Prints Actions

Add a Caption

Like

Dr. Cynthia Annett photos
Aug 6, 2013 3:31 PM

Add a comment ...
This comment will be shared on Google+ with the people who can see the photo. [Post Comment](#)

Photo Information

Sep 12, 2008
949x366 pixels – 134KB

[full details page](#)

People

No people [+](#)

Photo Location

©2013 Google - Map Data - Terms of Use

Edit location

[View album map](#)
[Upload to Panoramio](#)

Post on:

Tags

[Link to this Photo](#)


Photo reuse

© All rights reserved [edit](#)

Clicking on “full details page” will give you a dialog box with information about the photo.

Picasa™ Web Albums Home My Photos Explore Upload Search


My Photos > Photo > **Exif**



Date	Sep 12, 2008, 8:45:38 AM
Width	949
Height	366
File Size	136998
Camera	RICOH
Model	Caplio 500SE
ISO	64
Exposure	1/310 sec
Aperture	6.8
Focal Length	14mm
Flash Used	false
Latitude	39.094833° N
Longitude	94.709333° W
Orientation	1
White Balance	0
Metering Mode	5
Exposure Program	2
Exposure Bias	0.0
Date and Time (Original)	2008:09:12 15:45:38
Copyright	(C) Caplio 500SE User
Color Space	1
X-Resolution	72.0
Y-Resolution	72.0
Resolution Unit	2
Date and Time	2008:09:12 15:45:38

Clicking on View Album Map will give you a dialog box that will allow you to edit the map and to view it in Google Earth (where you can download the kml/kmz).

My Photos > Scrapbook Photos > **View map**

 [Edit Map](#)

[Back to album view](#)

 [View in Google Earth](#)

