

Oceania Plenary Session: 'Collaborating Internationally for Regional Benefit'

Plenary session:

This session will examine a range of ways in which working through the RDA and drawing on RDA outputs is being used to benefit research and research infrastructure in the region. A specific focus will be on Indigenous Data Governance, and the role of Open Science Platforms.

Session's speakers:

- Indigenous Data Governance and the role of CARE:
 - Guam: Dr Riley Taitingfong,
 - Australia: Robert McLellan, HASS&I
- Open Science Platforms:
 - Korea: Dr. Jungho Uhm, KISTI,
 - Japan: Mikiko Tanifuji, NII,
 - Malaysia: Professor ChM Dr Noorsaadah Abd Rahman, FASc, Malaysia Open Science Alliance Co-Chair

Get involved in [RDA Community](#)

Check out [VP22 programme sessions](#)

This meeting will take place according to the [RDA Code of Conduct](#)

Attendee Check-in

Please complete this table to indicate your attendance (add rows as needed):

Name	Affiliation	Location	Email/social media
Karen Ng Lee Peng	Universiti Malaya	Malaysia	karennlp@um.edu.my
Mingfang Wu	ARDC	Melbourne, Australia	mingfang.wu@ardc.edu.au
Stefanie Kethers	ARDC	Melbourne, Australia	stefanie.kethers@ardc.edu.au
Lesley Wyborn	ARDC	Canberra, Australia	lesley.wyborn@anu.edu.au
Veronika Stoka	J. Stefan Institute	Ljubljana, Slovenia	veronika.stoka@ijs.si
Francoise Genova	RDA France/Observatoire Astronomique de Strasbourg	Strasbourg, France	francoise.genova@astro.unistra.fr
Athina	RDA Europe	Thessaloniki, Greece	athina

Papadopoulou			.papadopoulou@rda-foundation.org
Yasuhiro Murayama	NICT (Natl. Inst. of Information and Communications Technology)	Japan	murayama@nict.go.jp
Martina Stockhause	DKRZ/IPCC DDC	Germany	stockhause@dkrz.de
Michelle Barker	ReSA	Australia	michelle@researchsoft.org
Andrew Treloar	ARDC	Australia	andrew.treloar@ardc.edu.au
Tom Honeyman	ARDC	Australia	tom.honeyman@ardc.edu.au
Riley Taitingfong	University of Arizona	USA	rtaitingfong@arizona.edu
Stéphanie Cheviron	Université de Strasbourg	Strasbourg, France	scheviron@unistra.fr
Mikiko Tanifuji	National Institute of Informatics	Japan	tanifuji@nii.ac.jp
Jung-Ho Um	Korean Institute of Science and Information Technology	Republic of Korea	jhum@kisti.re.kr
Matej Petrič	University of Ljubljana	Slovenia	matej.petric@ff.uni-lj.si

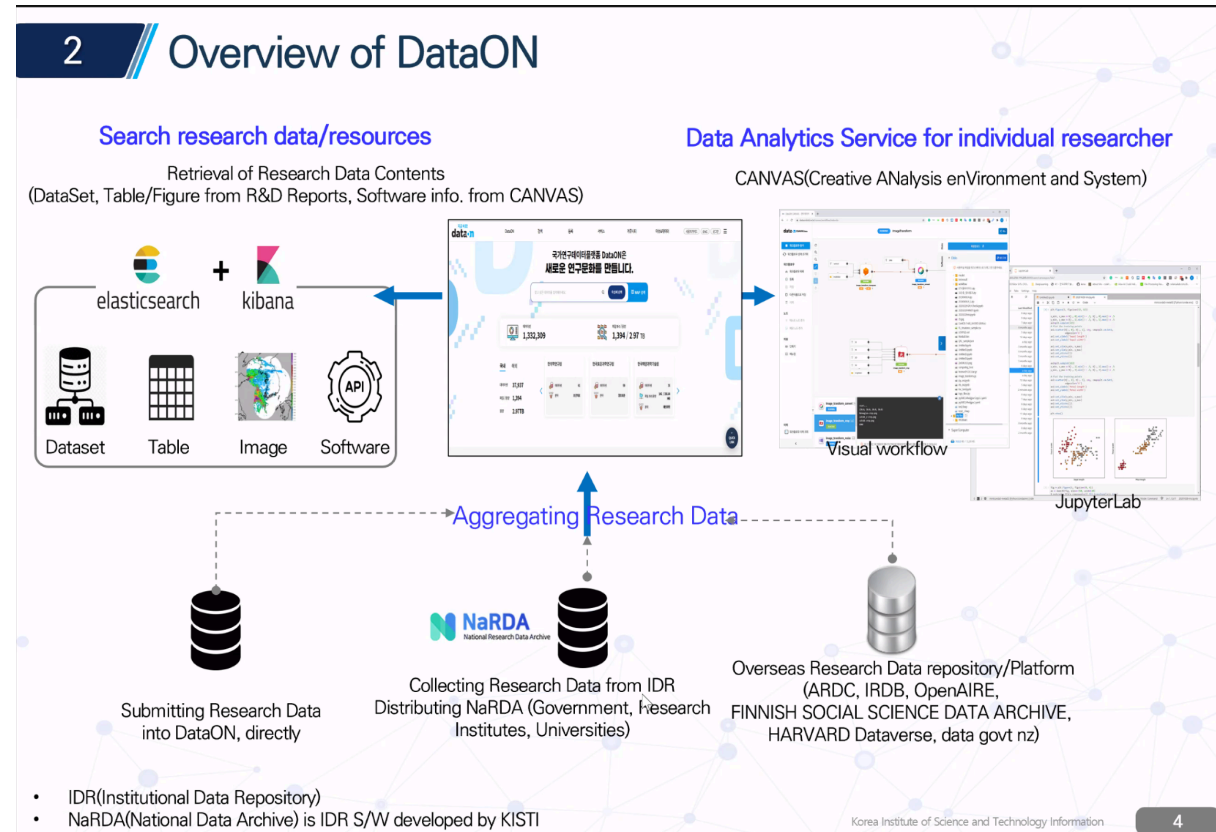
Collaborative Session Notes *(To be used by participants and chairs during the session)*

Resources for CARE Principles:

- CARE Principles via Global Indigenous Data Alliance. Includes CARE slide decks: <https://www.gida-global.org/care>
- Collaboratory for Indigenous Data Governance: <https://indigenoustatalab.org/>

- Indigenous metadata bundle: <https://indigenousdatalab.org/3006-2/>
- US IDSov and IDGov Summit:
 - <https://usindigenousdatanetwork.org/us-indigenous-data-sovereignty-governance-summit/>
 - <https://udallcenter.arizona.edu/news/2024-us-indigenous-data-sovereignty-and-governance-summit>

Korea



AT: CARE principles can also be applied to non-indigenous data, as we see in the Korean examples of application of CARE to DataON

Presentation file(Open Science Platform in S. Korea): <https://doi.org/10.5281/zenodo.11229911>

In context of GORC: More on GORC at

<https://archive.rd-alliance.org/groups/global-open-research-commons-ig>

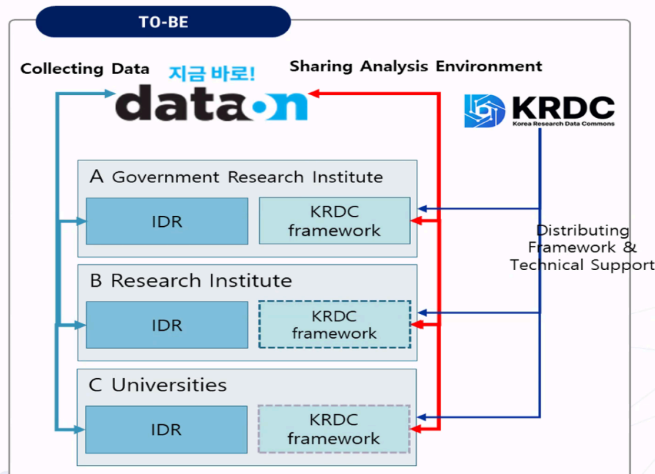
Traditional Knowledge (TK) Labels:

<https://localcontexts.org/labels/traditional-knowledge-labels/>

4 Future direction of DataON

Supporting data driven research activity

- Discussing about demand for new strategy considering both research security and open science
- Integrating research data sharing platform(DataON) and research analytics environment sharing system(KRDC: Korea Research Data Commons)



Korea Institute of Science and Technology Information

11

Japan

Indigenous data not yet an active discussion within the Japanese open science domain

NII RCOS
Research Center for Open Science and Data Platform

NII Research Data Cloud

*Accelerate Open Science and Data Intensive Science
by NII Research Data Cloud with New Seven Features*

Reuse

Code Package

Improves reproducibility of research outputs by packaging data, program, and data analysis environment.

Trust

Data Provenance

Provides an incentive model for data publication by monitoring data usage provenance.

Safe

Secure Storage

Preserves sensitive information through the ultra-secure and robust storage environment.

Secure Storage Environment

Trains all researchers to become new science practitioners by providing a learning environment for RDM skills.

Training

Capacity Building

Management

Data Governance

Data Governance (DG) - Data Management Plan (DMP) following institutional Data Policy

Interoperable

Data Curation

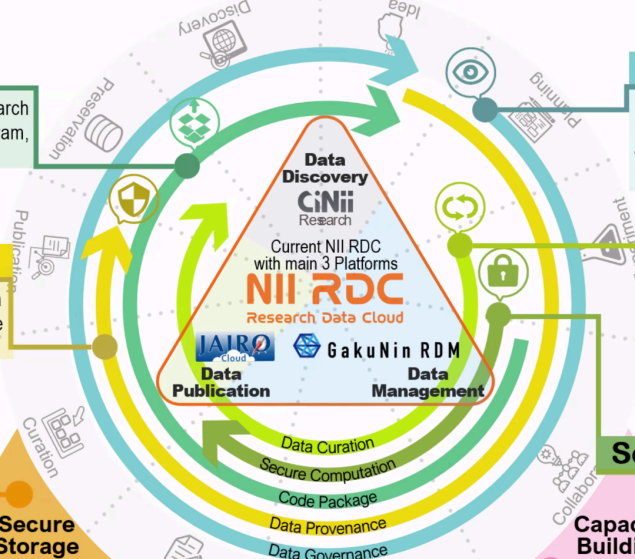
Contributes data reuse by developing an eco-system for data curation networks.

Protection

Secure Computation

Creates super-secured data analysis space by providing secure computing technology.

Capacity Building Platform



2

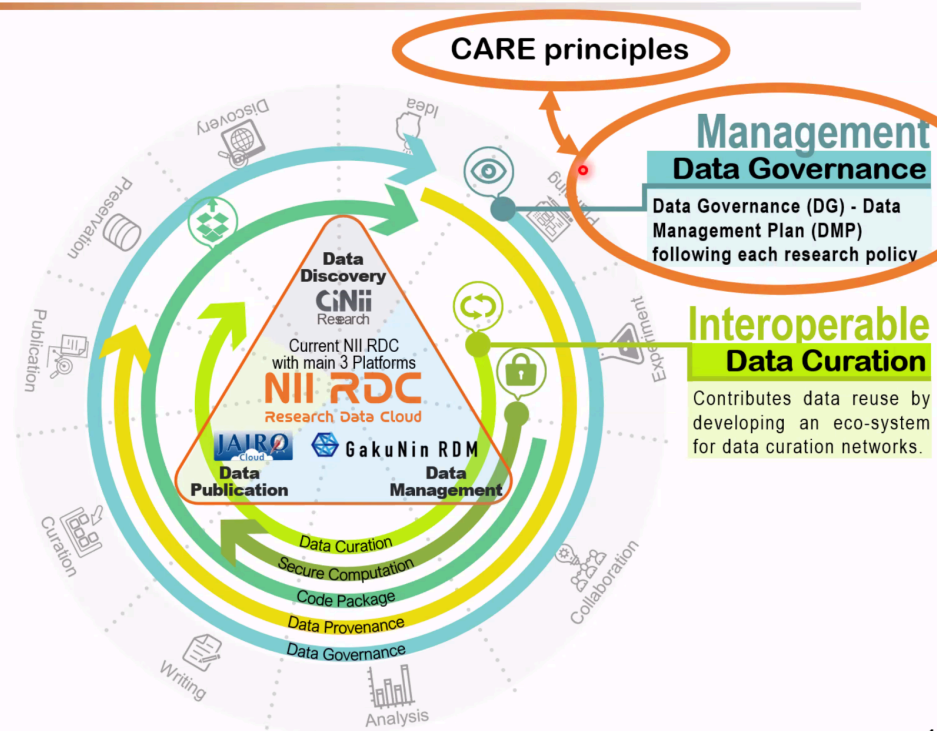
Indigenous Research

Examples

● Indigenous Knowledge in sciences

- *Ainu* culture and indigenous peoples | 先住民族
- Disaster management | 防災
 - Indigenous knowledge is important in the field of *disaster management* against natural disasters. Traditional folk beliefs, techniques and faiths from different parts of Japan are used for disaster management.
- Environmental protection and symbiosis | 環境保全
 - Impact of *non-native species* | 外来種の影響
 - Habitat development for diverse organisms | 多様な生物の生息環境
- Regional development | 地域振興
 - enhance the *vitality of a region*

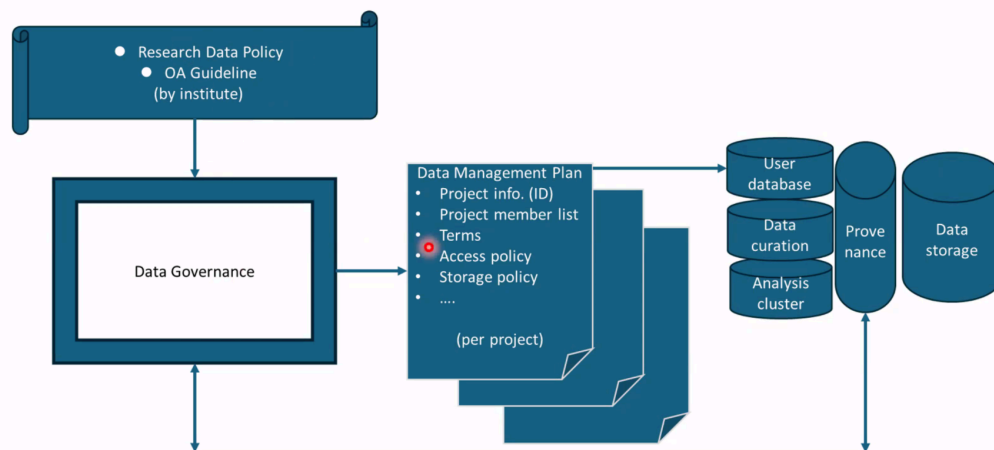
NII Research Data Cloud – Data Governance



Important to link CARE principles to data governance.

NII RDC – Japan open science platform


- Open science platform aims long term inheritable cultural platforms, with appropriate data management RDM with DG which comply with Care Principles for indigenous knowledge research.



5

Future – Japan open science platform

- Digitization
 - Books, images, photos ... in print
 - Metadata (schema) about the digitized data
- Utilizing as FAIRable data, applications

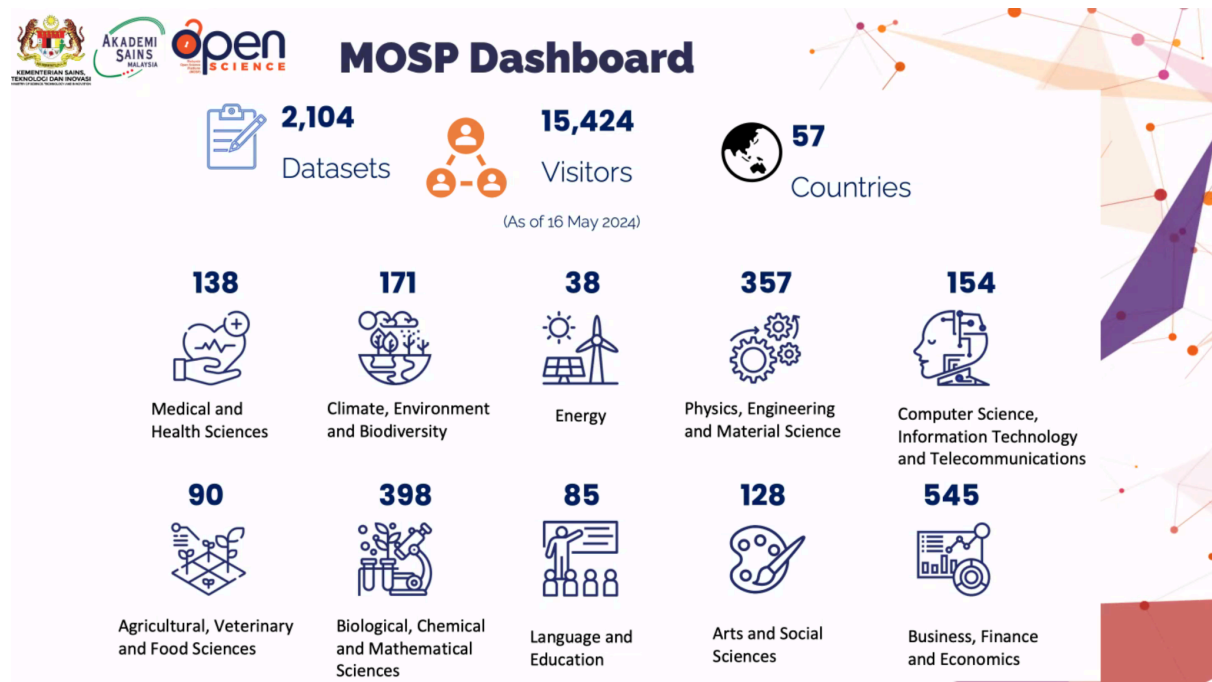


The screenshot shows the NDL SEARCH interface. The search results for the keyword 'アイヌ データ' (Ainu Data) are displayed. A red circle highlights the text '検索結果 7,880 件' (Search results: 7,880 items). An orange box with a red dot contains the text 'Example: 7880 literature with Ainu research archived by National Diet Library'. The search results list several documents related to the digitization of Ainu language research data.

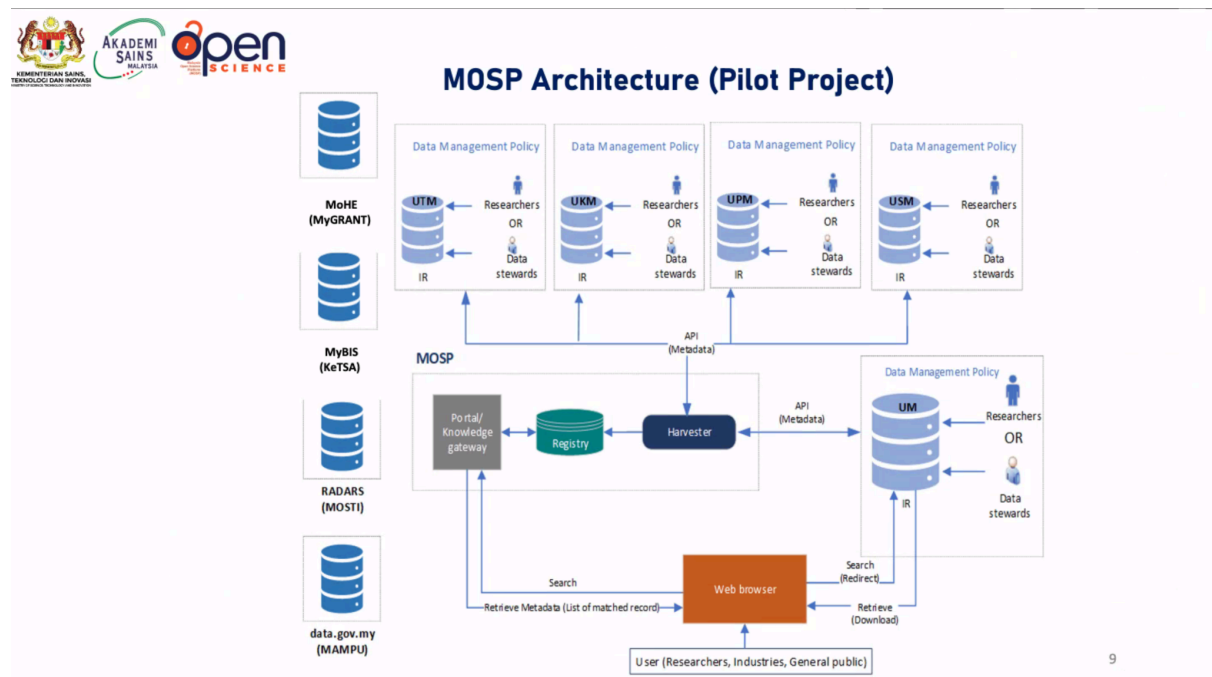
6

Opportunity to increase access to AINU knowledge held in National Diet (Parliament) Library
Malaysia

MOSP looks to gather research data into one platform that supports access and sharing
 aligned with FAIR



Indigenous knowledge can help with climate change and habitat loss





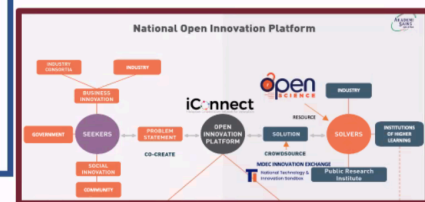
- National Guidelines on Open Science in Public Funded Research
- Guideline on Open Biodiversity Data
- Guideline on Health Research Data

Content: National Guidelines for Open Science

1. Introduction
2. Open Access to Scholarly Publications and Research Data
3. Infrastructure for Open Data Sharing
4. Incentives and Mandatory Rules on Open Science in Public Funded Research
5. Governance on Open Science in Public Funded Research
 - Roles and Responsibilities
 - Data Management in Open Science (DMP, Deposition, Re-use, etc.)
 - Ethics and Data Integrity
6. Implementation of Open Science in Public Funded Research



Research domain
on Indigenous
Knowledge



Next initiative for MOSP will be a research domain on indigenous knowledge