

Custom Robo Netplay Setup Guide

Preamble

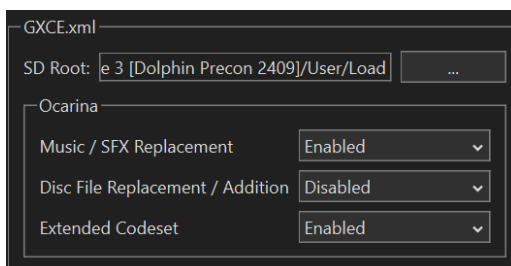
- For all returning players, delete or organize all your other dolphins, organize your folders, do not attempt running patched ISO's with this setup guide.
- For Linux or etc users, I am not one of you. If you need the files for setting up, someone in server CAN help you. Ask for help, someone will come running to help you.
- Just follow the guide please.

Downloads and General setup

This google drive has literally everything for playing the game, knowing things about the game, etc. Including standard ruleset, information regarding Pods and Bombs, Patch Notes, etc.

[Access this google drive: \(Link\)](#)

1. Download "Project Hive 3 [Dolphin Precon 2409].zip" present in that Google drive. (It is a Preconfigured build that has a handful of important codes built in.)
2. [Legally Acquire the Custom Robo.iso file \(Link\)](#).
3. Place the ISO in Dolphin's games folder.
4. Now, right click the base Custom Robo ISO in Dolphin's Game Directory
 - a. Start Riivolution patches
 - b. Open Riivolution XML
 - c. Click on the GXCE.xml file, not the folder
 - d. GXCE.xml should look like this.



- e. Save as a Preset.
- f. Name it PH3, otherwise you won't get the cool logo. If you know your stuff, it's optional, if you don't please follow the guide.
- g. Click start to see if it runs correctly.

If you need to know if it's working, refresh, if the preset looks like this:



It should be working. Now, you should be all set up.

Other Setup Tips

- **You can set up your controls really easily. Just open Controllers in dolphin and configure it to your preferences.**
- When hosting for online play, do not use the base Custom Robo ISO. Instead, run the game with the .json you created by saving as a preset. (I'll be referring to this as PH3 from here on out.)
 - You can just start the game if you're gonna play arcade or test out parts or etc. (Just click on PH3 and then start.)
 - If you're looking for a better way to enjoy the story, play the vanilla game.
- **You're now ready to netplay! Refer to the following steps for how to host or join a room.**

Netplay

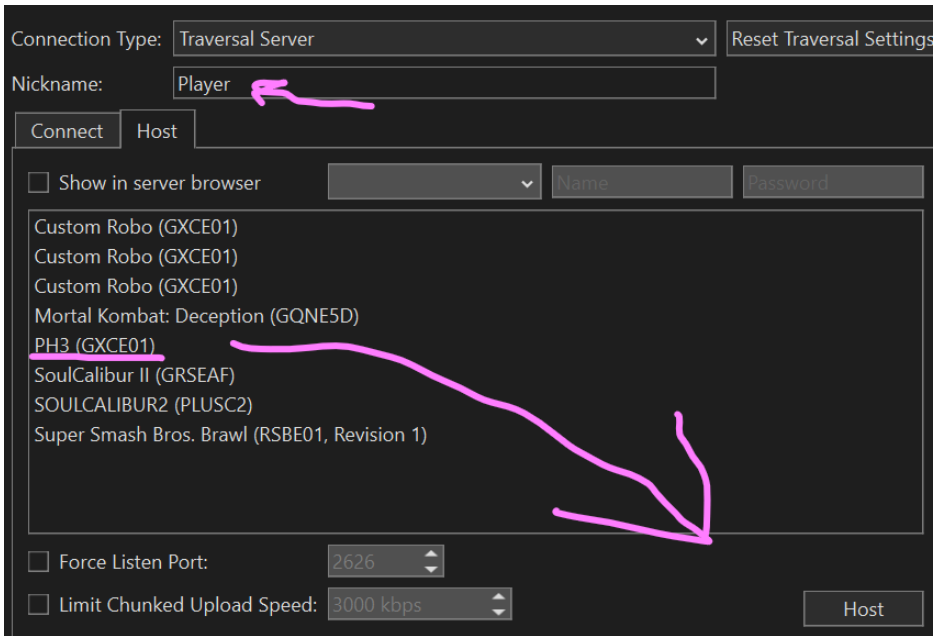
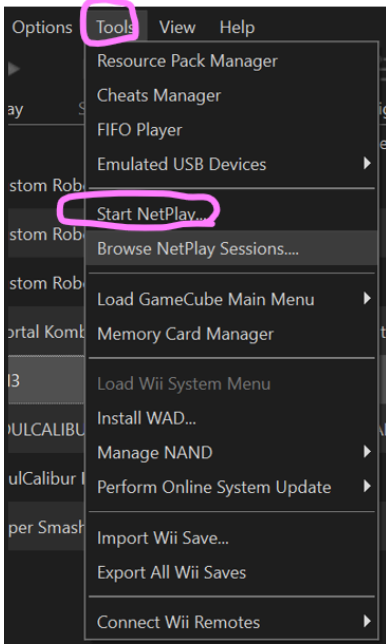
Hosting:

1. If it's your first time hosting, you could go to the main Dolphin window
 - a. Click Tools
 - b. Start NetPlay (You should set a nickname for yourself here if you'd like)
2. **Make sure the connection type is Traversal Server.**
3. Select PH3 and click Host at the bottom right.
4. For faster hosting in the future (this is the better method), you can just **right click PH3** from the main Dolphin window and select **Host with NetPlay** at the bottom.
5. Copy the room code and send it to your opponent.

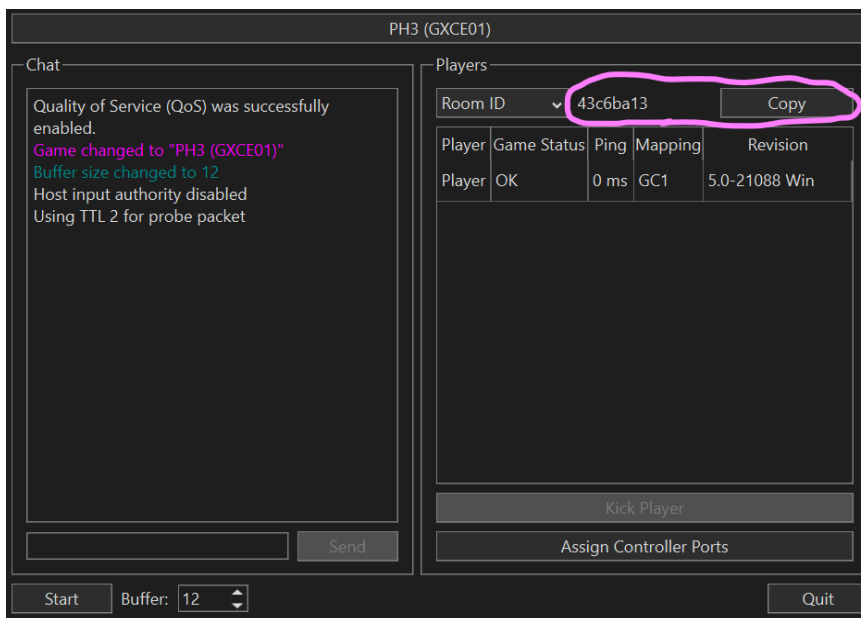
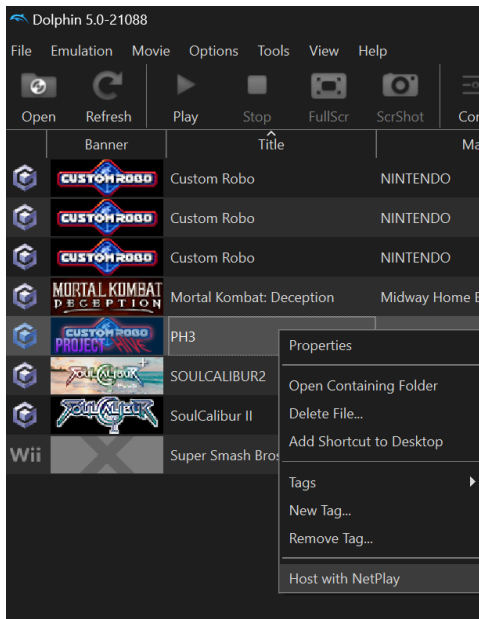
After Everyone is ready: Click start on the host's end and have fun battling robos!

Image Guide for people like me:

Slower Method (1st time, so you can set the traversal setting, your name, etc):



Quicker Method (Better way post-setup):

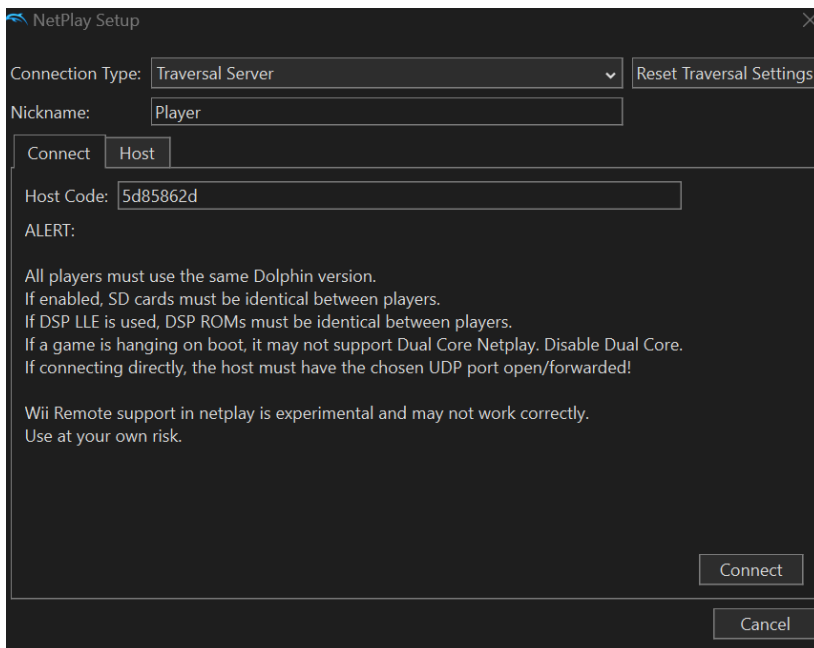
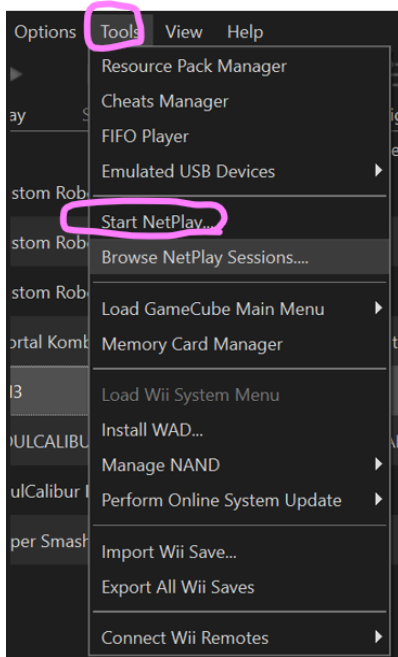


Join:

1. Go to the main Dolphin window
 - a. Click Tools
 - b. Start NetPlay, open the Connect tab.
 - c. You can set a nickname for yourself here if you'd like.
2. If you're connecting via Traversal Server, put the room code sent by the host into the Host Code box and click Connect at the bottom right.
 - a. Don't use Direct Connection, please don't Dox yourself in server.

After Everyone is ready: Let the Host know you're ready, they'll start the game, and then have fun battling robots!

Image Guide, unnecessary but I trust no one.



Netplay: Disclaimer about Buffer

Rule of thumb is around 1 per 12 ping that the person who joined will have on the window, but lower may work if it feels good on both sides.

Remember the event/tourney standard is 12 maximum.

Optional Setup!

Custom Textures:

This battle takes place in the file manager mostly.

1. In the Project Hive: Dolphin 2409 Folder
 - a. Open User
 - b. Open Load

- c. Open Textures
 - i. This is where any custom Textures you want go. There's an Archive of Custom textures [Somewhere \(hint hint\)](#).
 - ii. Download a texture, put it here, make sure the name is correct (if there's a "(1)" or etc. at the end, It needs to be removed.) Otherwise, ask questions in our server for help.
 - d. Good Test: You can just add [this whole folder](#) to the Texture Folder, it's an optional texture pack for menus looking glamorous. If your menus are way more red and pink: it worked.
2. In the Dolphin 2409 Settings
- a. Open Graphics
 - b. Open Advanced Tab
 - i. Checkmark the option: Load Custom Textures.

You are done, probably. If there are any issues, ask in server for help. Also you can upscale the game in graphics and it is solid with custom textures. (Optional, especially on cheap laptops or etc.)

Another Game? Custom Robo: Arena

In the discord, there is a setup guide. It's made by LuccaSuper (Friend him and dm him if you need to message him. about it, [just use this guide if you want to play arena.](#))