

Jejak Sejarah Dalam Museum Sultan Mahmud Badaudin II : Membangun Kesadaian Budaya

First Author^{1*}, Second-Author², Third-Author³, So-on, D.D.

* Lead Presenter

^{1*} Institution, Country, and E-Mail Address of Lead Presenter

² Institution, Country

³ Institution, Country

The main text used Times New Roman font 12 point. Type or paste your text into this file, but remember to keep the page margins the same as is set here. Paragraphs are justified (straight-edged) on both left and right. Use single-line spacing and leave a line gap between paragraphs. This helps your text to be read easily. The length of the abstract should be between 200 and 300 words. Abstract contain research objectives, methodology, results and discussion, and conclusion

Keywords: Include three to five keywords here, which are specific and reflect the essence of your research.

INTRODUCTION

It contains research background, problem formulation and research purposes, as well as literature review, the methods, and relevant and up-to-date theoretical basis.

RESULT AND DISCUSSION

It contains the results and analysis done with an emphasis on the answer to the problems. Results can include images, charts, tables, etc. are placed in the middle of the page, and described in the paper.

Example:

Table 1 Student Distribution Frequency

No	Interva l	Frequency	%	Category
1.	85 - 100	59	28.36	Very Good
2.	75 - 84	93	44.71	Good
3.	65 - 74	37	17.78	Average
4.	55 - 65	19	09.15	Bad

Amount	208	100.00
---------------	------------	---------------

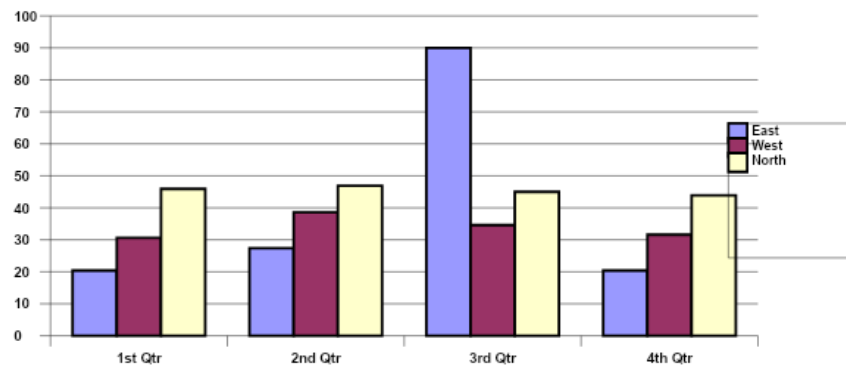


Figure 1 Speed Changing Tool

CONCLUSION

It contains an answer or explanation to the problem of research. Moreover, it can also be added to the development prospects of the research and the further application in subsequent studies.

REFERENCES

Only contains books, articles, theses, research reports and other sources which actually referred to the MLA (*Modern Language Association*) writing style.

Example:

Duranti, Alessandro, 1997. *Linguistic Anthropology*. Cambridge: Cambridge University press.

Holland, Dorothy dan Quinn, Naomi (ed). 1987. *Cultural Models in Language and Thought*. Cambridge: Cambridge University Press.

Doggart, Julia. "Minding the Gap: Realizing Our Ideal Community Writing Assistance Program." *The Community Literacy Journal* 2.1 (2007): 71-80.

Foster, John S., Jr. "Nuclear War." *The Encyclopedia Americana*. Intl. ed. 1998.

ISAH 2023 (International Seminar on Adab and Humanities)
UIN Raden Fatah Palembang, Indonesia
September 1st-2nd, 2022

United States. Federal Maritime Commission. *Hawaiian Trade Study: An Economic Analysis*.
Washington: GPO, 1978.

Brandt, Deborah. Personal interview. 28 May 2008.

(Note: List the interview under the name of the interviewee)

Viewing the Unfortunates at the Morgue. N.d. *The Triangle Factory File*. Cornell University
ILR School, 2005. Web. 16 Oct. 2010.

Sense and Sensibility. Screenplay by Emma Thompson and Jane Austen. Dir. Ang Lee. Perf.
Emma Thompson, and Kate Winslet. Sony, 1999. DVD.

(Note: Dir = Director. Perf. = Performer(s). List both after the title of the film or
DVD)