

LUU WEEKLY NEWS

[LUU Website](#)

[Learning](#)

[Intranet](#)

[What's On](#)

Welcome to LUU Weekly News.

Hello and Farewell



This week, we would like to give a warm welcome to **Yashita Shetty**, who is joining the Independent Stores team as a Retail Manager.

Welcome to LUU 🙌

This week, we sadly say farewell to **Harry Carr** who is leaving their role in Old Bar. Thank you for all your valuable contributions to LUU, we wish you all the best for the future.

Closed Days



There are some closed days coming, just in case this is not on your radar. LUU is closed 17 - 22 April inclusive. This means that we close our doors the evening of the 16th and re-open them on the morning of the 23rd.

Thursday 17 April is contractually a half day closed day but we have given everyone a discretionary extra half a day this year to turn this into a full day off.

Student Mixed Gender Sports Tournaments - Staff Volunteers Needed!

LUU are hosting Mixed Gender Sports Tournaments in May and are looking for anyone that would be willing to lend a hand to help us out with putting on these events for students.

Details...

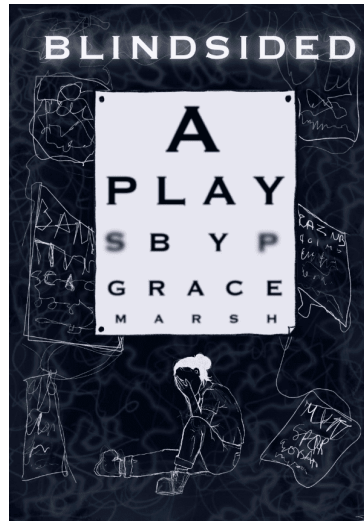
10am-4pm, Saturday 4 May - Football tournament - Sports Park, Weetwood.

10am-4pm, Saturday 24 May - Netball tournament - Gryphon Sports Centre.

Even if it is just one hour of your time, we would be incredibly grateful. [Please fill out the form with your availability.](#)

Any questions contact Lydia Shale from the Exec.

Blindsided



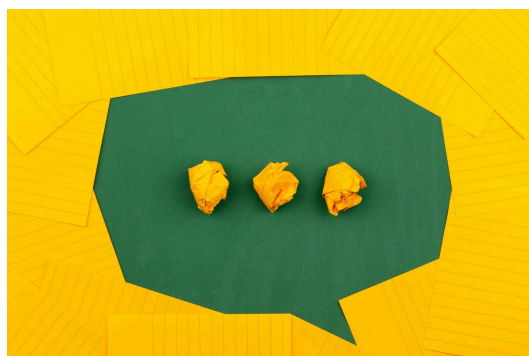
From Thursday 1 May to Saturday 3 May at stage@leeds, there will be a performance taking place called Blindsided.

Blindsided is about a girl who experiences blindness whilst growing up in her teenage years. It is written and based on the experiences of a student at the University of Leeds, and aims to increase awareness of the experiences of disabled students.

A moving and insightful performance that is not one to miss!

[For more information and to get a ticket, click here.](#)

Pulse Survey



Please complete our latest Pulse Survey. This is important for Managers and LUU generally to understand how their staff team are feeling and set actions to benefit the team in the future.

The survey will close on **27th April**

[Take the survey](#)

Hero of the Week



This week's heroes are:

Dennis Duckett, Chippy, People Team, Yandan Bian, Matt Broadey, Zack Hirst, Zoe Gray, Ben Richards, Haley Rich, Ally Haughey, Ross Hickman, Emily Noble, Rivea Jefferson, Annabel Martin and Erica Wood

Remember all nominations are submitted into our Hero of the Month draw of each month. There will be 3 vouchers up for grabs, each worth £10.

[You can submit your nominations here.](#)

To find out why you were nominated, [click here](#).

Love to Learn – LinkedInLearning: Nano Tips



LinkedIn Learning has created a series of short, actionable courses called "Nano Tips". Each one being under 10 minutes, these courses cover skills and tools that can support you in your work, such as Effective Meetings, Boundary Setting, and Delegating.

[To explore the courses, click here.](#) To access LinkedIn Learning through your @leeds account, [click here and head to "Log in to LinkedIn Learning"](#)

Reminders

- Nominate student societies for the Special Recognition for Committees Riley Award. [Please complete the form](#) by Friday 25 April. If you have any questions, please contact Tom Gibson (t.gibson@leeds.ac.uk).
- Shivani Gug is looking to gather creative pieces from 2nd and 3rd generation migrant individuals in the form of blogs, poems, spoken poetry and art. You can submit anything via this link: [The Diversity Blog – By Shivani](#)
- We need volunteers for the Varsity 2025 Colour Run on Monday 28 April from 5pm - 8:30pm (with a staff briefing on Wednesday 23 April at 10:30am). Click here to sign up: [Colour Run Volunteer Sign Up 2025](#). Any questions please email Zoe (z.e.gray@leeds.ac.uk)

Useful Links

[LUU Cultural Calendar](#) | [Equality and Inclusivity](#) | [Climate and Sustainability at LUU](#)