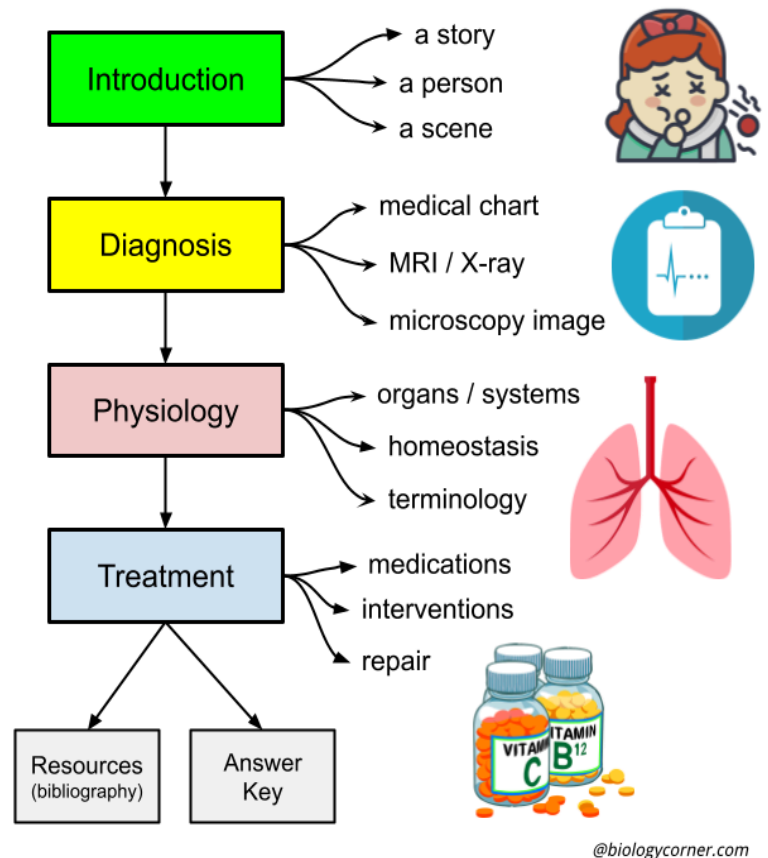


## Design a Case Study (Anatomy 2A)

Throughout the year, you have completed many case studies that outlined a disorder or disease that helped you understand a body system. You might recall learning about epidermolysis bullosa (butterfly skin disease) when studying the skin. Your task is to create your own case study and an answer key as a **final project** for this class.

Because we have extensively studied these cases in class, the following diseases **should not** be chosen.

- Epidermolysis Bullosa (skin)
- Muscular dystrophy (muscles)
- FOP or stoneman disease (skeletal)
- Cystic fibrosis (cell membrane)
- Leber Amaurosis or congenital blindness (senses)
- Cooley's Anemia (blood)
- Aortic Stenosis (heart)
- Celiac Disease (digestive)
- Bilateral duplicated ureters (urinary)
- Altitude sickness (respiratory)



Consider what disorder you would like to learn more about and create a case. You will probably want to choose something that you have a personal interest in, like someone in your family or a friend who may have experience. Your opening to the case will outline a person's story, which can be someone you know, or someone who has shared their story through articles, youtube channels, or blogs.

**\*You will be asked to declare your case topic before beginning the research portion.**

You will be researching your disorder and will be required to cite your sources, so during the research portion, keep track of where your information comes from. Citation Machine can help you add footnotes to your case.

### How to Write the Case

Review the [Celiac Case](#) - Your creation will follow a similar format.

#### 1) INTRODUCTION - ( 1-2 paragraphs)

Introduce the person by telling a story that includes early **symptoms** of the disease. Include 2-3 specific terms related to the system. If possible include a photo of the person with the condition. You are welcome to use your own personal story or a story of a family member (with their permission).

End the section with 2-3 questions related to the story, the symptoms, the system, or anything else you have introduced in the introduction.

#### 2) DIAGNOSIS (1-2 paragraphs)

Describe what procedures were involved in diagnosing the disorder (CAT scans, x-rays, urinalogy , blood tests..etc). Include images that may relate to the diagnostics or charts that.. Be sure to credit images used in the case.

Include 2-3 questions related to these procedures or data from a chart or graph.

### 3) PHYSIOLOGY (3-4 paragraphs)

Explain how the disease affects the body. Be specific with your terminology here, the organs involved and how the disease alters them. This will be a longer section because this is where you explain why the disease causes problems for the human. Explain exactly what is making the patient sick with attention to homeostasis

Include 2-3 questions related to these procedures or data from a chart or graph.

### 3) TREATMENT (1-2 paragraphs)

Describe the procedures or medications or treatments that would be prescribed for the disorder. This section should also include a long term prognosis for the person with the condition. If no treatment exists, you may provide ways for patients to cope with their disease or how the patient can be supported by family members. You could also discuss prevention of the disease.

Include 2-3 questions on the details of this section or 1 final synthesis question over the entire case.

**4) Resources** - works cited (bibliography) with links to your resources and image sources - use citation machine (MLA or APA format).

**5) ANSWER KEY** Attach the answer key for the questions you have written for each section.

---

## GRADING RUBRIC

<p>Intro __ 4 __ 3 __ 2 __ 1 __ 0</p> <ul style="list-style-type: none"><li>- introduction provides story</li><li>- image of person or related</li><li>- symptoms described</li><li>- questions included are relevant to text</li></ul> <p>Diagnosis __ 4 __ 3 __ 2 __ 1 __ 0</p> <ul style="list-style-type: none"><li>- procedures / tests described</li><li>- relevant image included (equipment or chart)</li><li>- questions are relevant to text</li></ul> <p>Physiology __ 4 __ 3 __ 2 __ 1 __ 0</p> <ul style="list-style-type: none"><li>- detailed descriptions included of anatomy/physiology</li><li>- discusses overall effects on the body</li><li>- disease is explained within the context of the case</li><li>- images or charts included with citations</li></ul> <p>Treatment __ 4 __ 3 __ 2 __ 1 __ 0</p> <ul style="list-style-type: none"><li>-how the condition can be cured or managed</li><li>-specific details on drugs or therapies</li></ul>	<p>Resources __ 4 __ 3 __ 2 __ 1 __ 0</p> <ul style="list-style-type: none"><li>- list of resources or works cited page included</li><li>- resources are linked</li><li>- images are credited</li></ul> <p>Answer Key __ 4 __ 3 __ 2 __ 1 __ 0</p> <ul style="list-style-type: none"><li>- Answer key to questions is included</li><li>- Answers are accurate</li><li>- Could be used to grade</li></ul> <p>TOTAL POINT VALUE ____ out of 40</p> <p>PROJECT DUE DATE: <span style="background-color: yellow; display: inline-block; width: 50px; height: 15px;"></span></p>
--	---