

12:30 pm Central

URL: <https://unl.zoom.us/j/183382852>

Phone: +1 669 900 6833 or +1 408 638 0968 or +1 646 876 9923

Meeting ID: 183 382 852

Operations Meeting August 9, 2019

Attendees: Jeff Dost, Marian Zvada, Mat Selmecei, John Thiltges, Pascal Paschos, Huijun Zhu

Apologies: Derek, Brian Lin

Fires

-

Announcements

- Derek is up on Freshdesk triage next week, Jeff is up the following week

Nebraska (Derek, Marian, John, Huijun)

- OASIS:
 - cvmfs-2.6.1 and cvmfs-server-2.6.1 release update deployed on all nodes: {oasis,oasis-replica,oasis-itb,oasis-replica-itb}.opensciencegrid.org.
 - major upgrade to the config-repo, moved from [OSG branch](#) to [cvmfs-contrib](#).
Benefit: Master config source for CVMFS configuration repository for major organizations outside of oasis-server source code.
- GRACC: still need to decommission gracc-apel.service on separate VM and move to GRACC Frontend
- CEPH infrastructure hosting storage for OpenStack-hosted services for OSG under the rolling update, may expect interruptions to some services with I/O like GRACC FE
- Accounting taskforce in progress (meeting scheduled to review OSGConnect dashboards on Aug 12th)
- OSG services brownout during our hosting providers optimization. Small “blip” in the monitoring.
- https://hcc-mon.unl.edu/osgmon/check_mk/index.py?start_url=%2Fosgmon%2Fcheck_mk%2Fdashboard.py
 - New Goal: Add more hosts every week. This week: (just making it up)
 - WISC will upgrade frontends to CentOS7
url for FIFE FE? - Derek will start with Ken
 - StashCache caches in check_mk?
 - Agent download link: https://hcc-mon.unl.edu/osgmon/check_mk/agents/
- Contact list for OSG hosted services:

<https://docs.google.com/spreadsheets/d/1F98uwkoylg7vdbqq2ml7gXx9ijVNVMI23AdLXBqO5B4/edit?usp=sharing>

I'm updating the configuration in check_mk to add contacts to services according to the spreadsheet, so you may get emails regarding host issues. If you have any concerns or comments to the emails, please contact huijun.zhu@unl.edu, or update the above spreadsheet. We can discuss:

- Which services should be included in the email
 - What are reasonable thresholds to mark a service as WARN/CRIT.
 - How soon should an issue be reported, immediately or some time later (it might recover in a short while)
- UNL reviewed our centralized logging configuration. All UNL OSG hosts log to a central ES (Not GRACC, UNL Specific).
 - Now that the summer is ending, Derek's wishlist that will probably not happen with the Ops effort levels and the competing projects:
 - GRACC ES Upgrade
 - GRACC recovery exercise
 - Emergency service move exercise, for example moving a service from UNL to UCSD.

Madison (Brian Lin, Mat Selmecci)

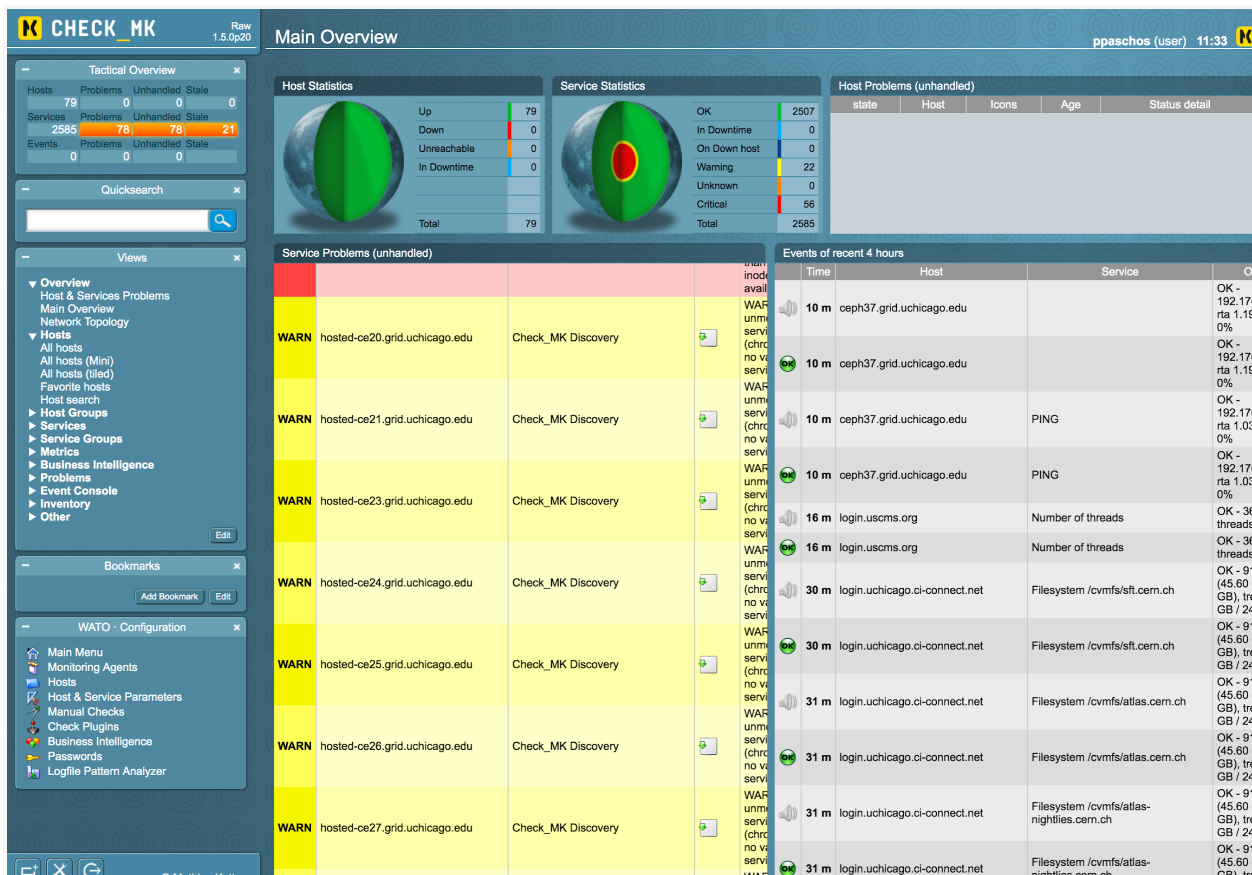
- Updated repo-update-cadist script to 1.0.4-1 (updates the CA cert distribution), available in goc-itb repo. Need someone from UNL to update repo-itb with this package and the security team to verify it
- JIRA: need to convert OPS to "old-style" project for publicly viewable tickets
- Software provided a script for managing WN software/data from the CE; need to update w/ requests from operations
- Software updated osg-configure last week; should keep it from stomping existing config. New version in osg-testing repos; would appreciate testing:
<https://opensciencegrid.atlassian.net/browse/SOFTWARE-3721>
- Software developed a plan for the management of Hosted CE remote hosts:
<https://docs.google.com/document/d/1UIYQxErt2PRU2258m-7v4MQkHbb1IKuZFsOXfdrA6MQ/edit?usp=sharing>; revised, would like review
- Starting w/ OSG 3.5, OK to build packages directly into the devops-itb repo instead of having them go through the osg-development repo first? (devops is the replacement for the goc repo.) Ticket: <https://opensciencegrid.atlassian.net/browse/SOFTWARE-3291>
- Plan to rearrange mailing lists:
<https://docs.google.com/spreadsheets/d/1JCAx5jfnl2pt3ojHcsylqoPflZx0bZ77ZfJASQXTVZA/edit#gid=0>. Highlights:
 - Rename osg-software to software-discuss
 - Create sites-announce for sending announcements to sites (in case there are admins not registered in topology)

- Drop osg-sites, osg-itb, all the vdt-* lists
- Create technology-team for internal technology team discussion (i.e. staff only)

Chicago (Pascal)

Aug 9th:

- Deployed check-mk to all login nodes and other nodes on the infrastructure in support of OSG (e.g. hostedCEs). Will provision a ci-connect login api to the server for osg staff.



- Will be updating hostcerts for a few hostCEs
- We are proceeding with upgrading two login servers (new hardware) new website, new user/project database (re-using the slate backend) to remove globus dependency, and new account provisioning
- Question on StashCache during the call. Made another PR for ouchicago stashcache.

July 26th:-

- Updated Ceph clients to 14.2.2 on login02, login03, login.ci-connect, stash-xrd

- Switched Ceph client from Kernel client to FUSE client on login02/login03 to attempt to alleviate stuck file accesses
- Installed check-mk agent on login03 / puppetized
- Adding 'osgmon' account for UNL folks to submit test jobs
- July 19th: No current update from UChicago. Pascal at OSG User School. Will update the document when I get a report from team members. Action item from Marian --- it's work in progress. Admin team spent most of the week in support of OSG User school operations (adding local-scratch2 to training, adding stash there etc)
- July 19th: Most of CE's hosted at UChicago have been migrated to the new Openstack infrastructure.
- Stratum-0 issue is marked as resolved. The CVMFS origin at UChicago was down while we attempted to move the VM to a new OpenStack cluster. This caused the synchronization issues with the Stratum 1 slow..
- We have reverted the changes and will try again in a few days. We reached out directly to Dave Dykstra.
- There is an issue with /local-scratch that we are working on, either there's a XFS issue or (more likely) a failing disk. This is making /local-scratch unusable, and so User Support is moving users to login02 in lieu of having them change where they submit from (e.g. /home). We are working on finding the faulty disk and replacing it. There is the possibility that this is caused by a faulty workflow --- in that case moving users to login02 will not address the issue.
- An issue reported that /stash was hanging, although we are not observing that behavior on any other host
- Registering some stashcache sites with topology (working on that today and update jira by monday)
- CephFS upgrade to Nautilus (done)
 - Upgrade during the downtime which ended on tuesday. We have a ticket response in regards to the stash: <https://support.opensciencegrid.org/a/tickets/10259> which we are looking into that. File manager in globus to access the osgconnect#stash shows "ExternalError.DirListingFailed.ConnectFailed" error. We rebooted globus and will follow up with the user. We can not replicate at this point.
 - Scubing processes are still ongoing. There are two OSD pods that were full (Wed/Thur) and there is still some data migration going on. Some intermittent slow down of the filesystem is expected
- Work begun on upgrading login01 (on going)
 - Update to EL7
 - Move home to /local-scratch
 - Currently being used as a testbed for the new provisioner (more details later)
- Two HostedCE were provisioned for TACC and IU (jetstream) and SDSC (Comet) (done)

- Also, we are moving hosted-ces to new openstack infrastructure: update: hosted-CEs 7-21 have moved--- working on 22. All others still on the old infrastructure.
- Marco was wondering if we need a Hosted CE for IU jetstream? Igor already requested a factory entry using js-157-32.jetstream-cloud.org as the CE -- Jeff

Michigan (Shawn)

- **No major issues to report August 2, 2019.** In-process items below
- There has been missing data from a few different outages. The attempt to re-read the data didn't completely work. Work with Derek (some time) to create separate data-recovery container, configured to grab single time window of data? **Still to do!!**
- Need to add additional perfSONAR RabbitMQ bus topics: **ps_meta** and **ps_status** to tape archiving at FNAL. (in Trello) **Any update?**
- Waiting for updates from the perfSONAR team (Andy Lake, Mark Feit) to try to get the data being published on the RabbitMQ bus to match the way we publish via ps-collector. Once there is something ready, we need to implement and test (in Trello)

UCSD (Jeff, Edgar, Marco)

GWMS Factory

- In the process of purging gfactory-1 in order to refactor it as the new OSG ITB factory
- Need to provide rules for check_mk custom factory check from gfactory-2.opensciencegrid.org (send it to operations@ mailing list)

Hosted CEs

Institution - Cluster	Status	Last running	Open Freshdesk Tx
Wayne State University	Running		
Florida State University	No (cert expired)	8/9/2019	
Georgia State University	No (cert expired)	8/9/2019	
LIGO India Site (Inter-University Centre for Astronomy and Astrophysics (IUCAA) Pune, INDIA)	No (squid)	November 28, 2018	https://support.opensciencegrid.org/helpdesk/tickets/7335
TACC	Running		
University of Utah - Lonepeak	No (ssh timeouts)	7/25/2019	https://support.opensciencegrid.org/a/tickets/2753

			9
PSC	Running		
University of Utah - Kingspeak	No (ssh timeouts)	7/25/2019	https://support.opensciencegrid.org/a/tickets/27539
University of Utah - Ember	No (ssh timeouts)	7/25/2019	https://support.opensciencegrid.org/a/tickets/27539
NMSU - Discovery	Running		
USF	Running		
ASU	Running		
NMSU - Aggie Grid	No (squid)	3/16/2019	https://support.opensciencegrid.org/a/tickets/27084
American Museum of Natural History	Running		
LSU - SuperMIC	Running		
UMD	No (batch idle pilots)	7/1/2019	https://support.opensciencegrid.org/a/tickets/8516
University of Utah - Notchpeak	No (ssh timeouts)	7/25/2019	
LSU - qb2	Running		

- FSU, Georgia State - host certs expired, Lincoln was notified and is getting new certs
 - Should be automated in puppet, but some firewall issues prevented the update
- UTAH CEs - SSH is timing out, opened ticket
 - <https://support.opensciencegrid.org/a/tickets/27539>
 - Admins see issues with scratch area putting submit nodes in bad state, will investigate
- UMD - Pilots are stuck idle on the CE / going held
 - Pinged site admins, local batch condor might need to be restarted
 - Admins haven't responded, will ping again
- LIGO India Site
 - Ongoing discussion with Admin, escalated to Ligo team
- NMSU Aggie
 - Admin replied, still working on CRL issues (site admin maintains OSG WN, no NFS shared home dir)
 - Admin did a fresh install of OSG worker node and submit host, working with him to re-setup ssh connection
- Setting up 3 new CEs; 2 UConn CEs, Puebla (Mexico)

- For UMD will install PRP kubernetes managed CE at UMD in parallel (Igor will help with setup)
- UConn CEs work but one has pilots failing due to cvmfs issues; debugging in progress; the other CE is in downtime

Mats

1. Will not be able to attend these calls most weeks, but UChicago should cover most issues
2. Concerned about the frontend/factory scaling. Discussion on Slack and gwms factory mailing list

AOB