

# LUU WEEKLY NEWS

[LUU Website](#)

[Learning](#)

[Intranet](#)

[What's On](#)

Welcome to LUU Weekly News.

## Hello and Farewell



This week we would like to give a warm welcome to

- **Abraham** who is joining the Digital Services team as the **Platforms Technician**
- **Joseph** and **Kayla** who are joining the Tech team as **Venues Technicians**

Welcome to LUU 🙌

**LUU Engagement Survey**



### **Help us to help you...**

We are asking all staff to give 15 minutes of their time to fill out our engagement survey. The results of the survey will help us shape our people priorities over the next year, allowing us to focus on what you tell us is the most important area for you.

We are working with an external partner on the survey and will be able to benchmark our results against other student unions results helping us to see shared challenges across the sector. So grab yourself a cup of tea and get ready to feedback on communication, wellbeing, pay, reward, leadership, values, learning opportunities and much more.

**Survey link:** <https://reflections.agendaconsulting.co.uk/luu2025>

**Password:** LUUstaffsurvey2025

### **Protest on Campus**

We have become aware that there is a Student walkout protest planned on Thursday (13th) at 1pm. We believe that the protesters are planning to meet outside LUU in the Precinct. Please note that whilst we are aware of this activity it is not an authorised event. So the University who own the precinct space have not worked with the organisers on the health and safety and other aspects of the activity. To ensure the safety and wellbeing of our staff and building users we will have an increased staff presence in our foyer and on the front steps of the building.

We have [Protest response guidance](#) for LUU staff which we would recommend all LUU staff read and understand ahead of Wednesday.

If you have any questions or concerns then please speak to your manager or a member of the People Team.

### **Love Your Time at Leeds - Valentines**



Our People are pretty awesome, so let's say thank you.

Tell someone how much you appreciate them, and the work they do and let's all LOVE OUR TIME AT LEEDS this valentine's week.

To make this easier we have provided notecards in the Inclusive office, you can deliver your thank you yourself or leave it in the basket for it to be delivered for you.

Whilst we are talking about appreciation... Nothing says we appreciate you better than pizza 🍕

The Staff Networks will be running a *Love your Networks and find your place at Leeds Lunch*. Grab a slice of Domino's pizza and dessert and have a go at our Valentine's quiz, we'll have prizes for the winners.

Date and Time: Wednesday 12 February, 13:00 to 14:00

Location: Martin Luther King Office on Level 1

All staff members- network members and allies are welcome, we'll be catering for Vegans, Vegetarian, Dairy-Free and Gluten Free dietary needs.

Get in touch with Nicole at [n.c.cal-akpuogwu@leeds.ac.uk](mailto:n.c.cal-akpuogwu@leeds.ac.uk) if you have any specific requirements or questions you would like to discuss.

### LeadLUU Volunteering- Encourage Students to Vote



January is over and that means LeadLUU is in full swing. In less than a month we will have elected next year's leaders. Whilst this is exciting, we need your help...

As in previous years, we would like staff to support the election process. Whilst we are recruiting a handful of Elections Ambassadors, we'd like your help too. Can you volunteer to cover at least one-hour shift to encourage students to vote?

We are unable to use the voting crate this year but have purchased a reusable gazebo which will be in the same location; this will need staffing however there is also a role in speaking to students within LUU spaces - and beyond - to encourage them to vote.

Please indicate your availability on the staffing rota,  
[https://docs.google.com/spreadsheets/d/1TOkO7GN\\_yWFuum-dt3RhgSSBjd4FB35d3G1Yj8IzExA/edit?gid=0#gid=0](https://docs.google.com/spreadsheets/d/1TOkO7GN_yWFuum-dt3RhgSSBjd4FB35d3G1Yj8IzExA/edit?gid=0#gid=0).

Thank you in advance, your support - as ever - is greatly appreciated!

-Colina

### Leeds Ball Tickets- Available Now



Leeds Ball is taking place on the **7 June 2025**, from **6 pm to 3 am**. Tickets are now on sale for £29 (+£1.50 booking fee)

Payment Plans are available- learn more [here](#)

[Buy your ticket today](#)

### REACH Staff Network is looking for a new Co-Lead



Our REACH (Race, Ethnicity and Cultural Heritage) Network Leader Nicole Cal-Akpuogwu is looking for someone to co-lead the Network with.

Nicole is looking for someone to help them uplift and empower the Network, and work with her to create a community for all that identify with the group. Creativity and passion are key to this role, and if you are in a weekly paid role- we would love to hear from you.

If you are interested and want to find out more about this role, please contact Nicole Cal-Akpuogwu ([N.C.Cal-Akpuogwu@leeds.ac.uk](mailto:N.C.Cal-Akpuogwu@leeds.ac.uk)) or Katie Fox ([K.Fox1@leeds.ac.uk](mailto:K.Fox1@leeds.ac.uk)).

### Hero of the Week



This week's heroes are:

**Daisy Bennett, Aman Ottakandathil, Harry Carr, Christian Boddan, Shivani Gug, Annabel Martin, Erica Wood, Daniela Flores-Briggs, Nathan Town, Ryan Massey, Graham Wootton, Kea Daley, Donna Lacy, Sarah Daley, Tom Gibson, Meg Darroch, Ellen Burke, Luke Millward, Hari Mani (And everyone from Co-Op who helped), Matt Broadey, Steve Keeble,**

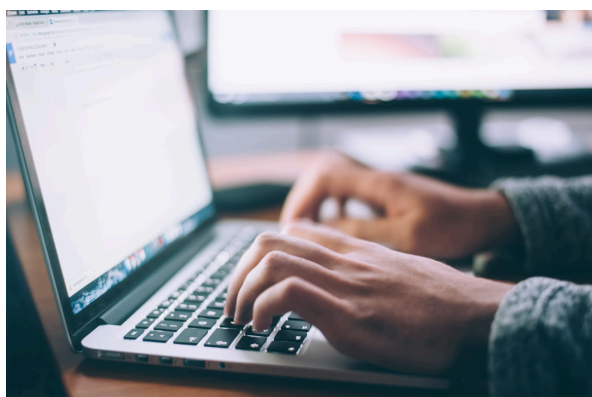
**Karin Stockdale, Elizabeth Wride, Emma Holt-Golding, Logistics Team, Chris Mee, Building Maintenance Team, Ellie Dodds, Josh Allan, Anna Winter, Gemma Rudette, Hilary Iyenda, Madeleine Rogers, Beatrix Haigh, Kate Matthews, Lucy Booth, Sahana Santhiappillai, Dennis Duckett and Chippy**

Remember all nominations are submitted into our Hero of the Month draw of each month. There will be 3 vouchers up for grabs, each worth £10.

[You can submit your nominations here.](#)

To find out why you were nominated, [click here](#).

### Love to Learn – Student Fraud Awareness



Open to students only- a new [Student Fraud Awareness](#) course has been made available on Minerva. This interactive resource gives learners the opportunity to recognise fraud, scams and phishing attempts using real world case studies from the University of Leeds.

Along with interactive resources, there is a helpful [recognising scamming video](#), which gives learners an insight into a common but sophisticated phishing and bank fraud scam.

All students are strongly encouraged to take this module to help protect themselves.

### Reminders

- The staff room fire escape has been affected by the work happening to the external staircase leading from the level 2 meeting rooms. Read last week's weekly news to learn more.
- The Insight Team is currently running a survey in collaboration with the university to understand students' opinions and experiences of Fresh Start 2025. For a chance of winning one of 8 vouchers worth up to £100, please [complete the survey](#) by midnight on 2 March.

### Useful Links

[LUU Cultural Calendar](#) | [Equality and Inclusivity](#) | [Climate and Sustainability at LUU](#)