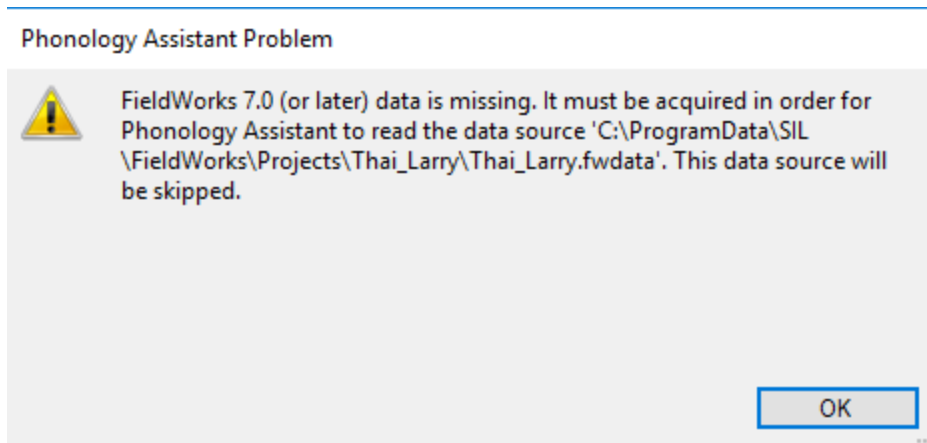


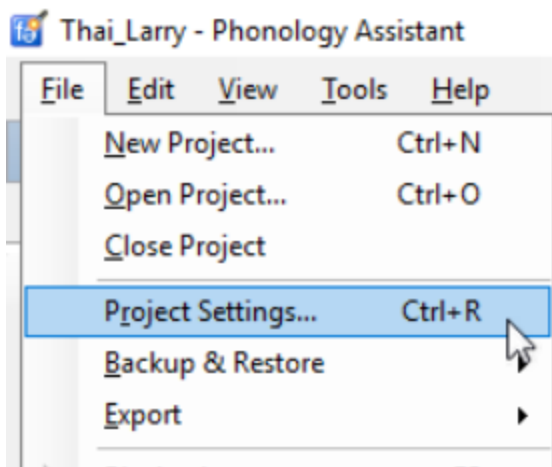
Phonology Assistant will not load my FieldWorks data file

There is a bug in Phonology Assistant 3.6.5 (and possibly 3.6.4) that does not load FieldWorks data files that are in another location. You will see a dialog box similar to this:

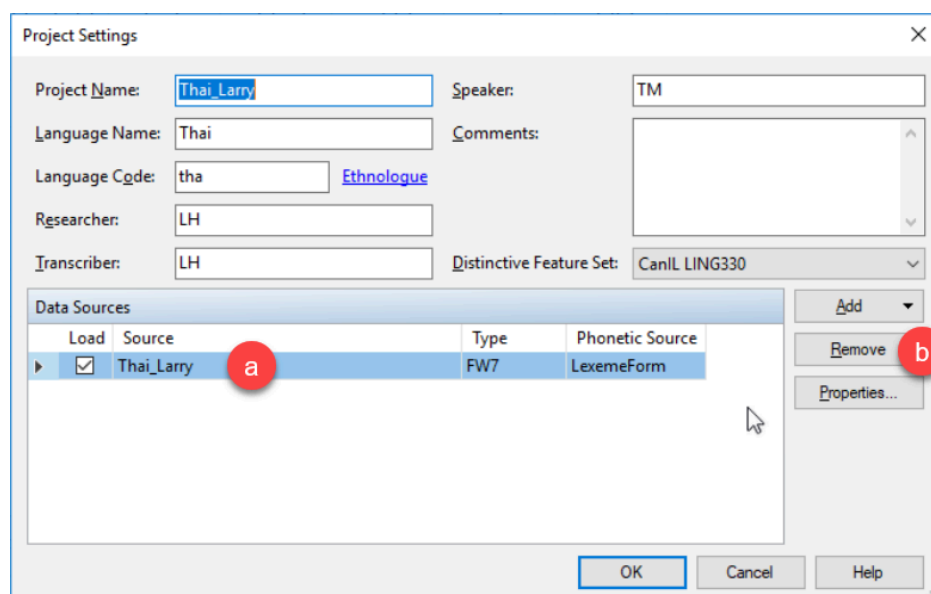


How to fix:

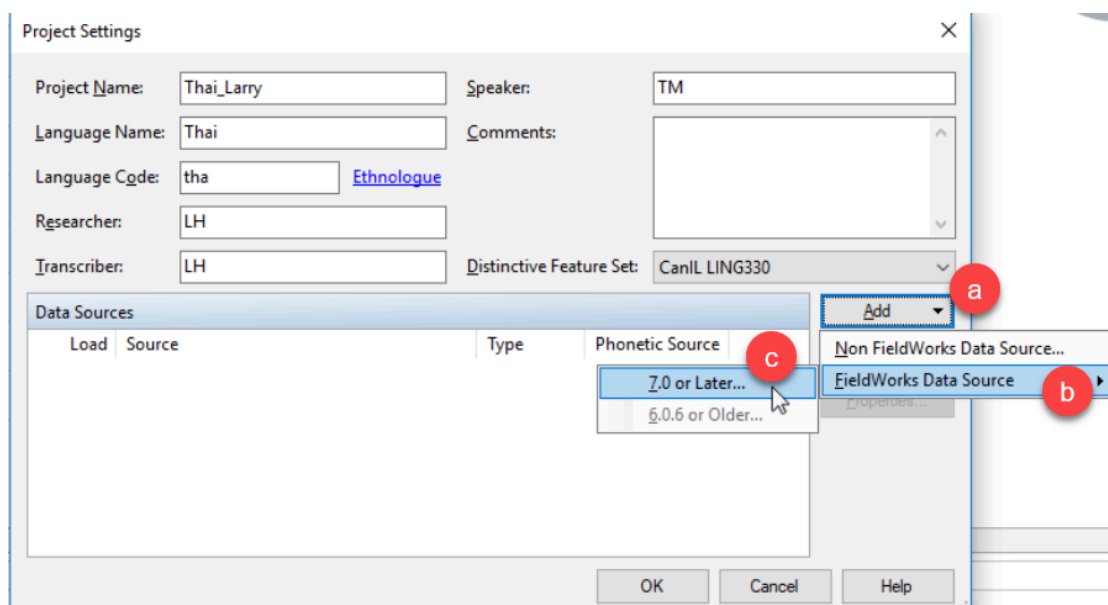
1. Install an older version of Phonology Assistant. (This is done already in the CanIL lab). Version 3.6.3 from March 2017 will work properly. Link: <https://software.sil.org/phonologyassistant/download/>
2. Open your Phonology Assistant project. This is most likely stored in Documents\Phonology Assistant\Thai_Larry (where Thai_Larry is the name of the PA project. Your folder name will be different).
3. You will see the Problem dialog box. Click OK.
4. Select File ... Project Settings ...



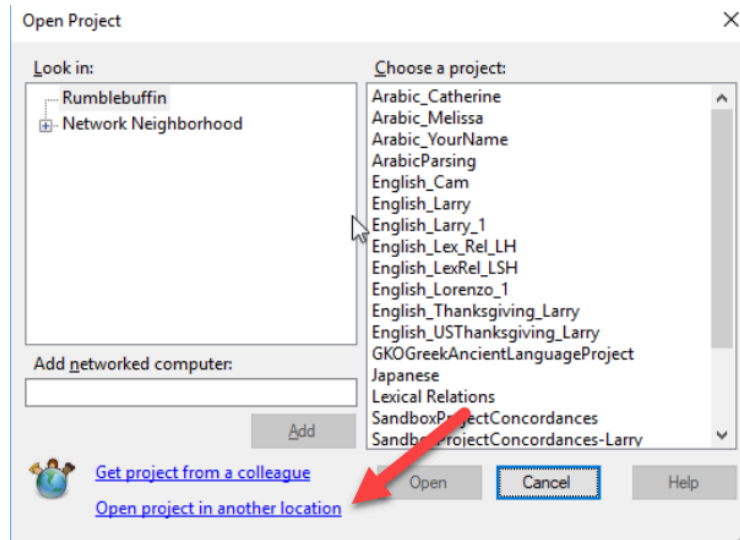
5. Make sure the data source is selected (a) and click Remove (b). It will ask if you are sure you want to delete the Data source. Click Yes.



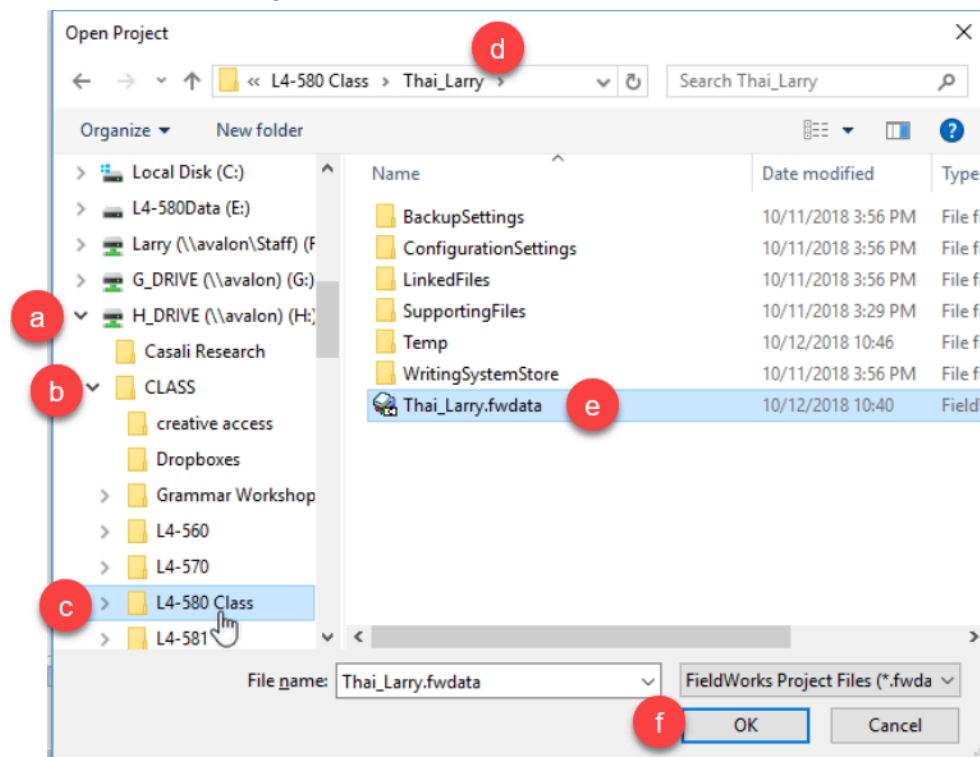
6. Then click on:
- the Add button
 - Select: FieldWorks Data Source
 - Select 7.0 or later ...



7. Then click on: Open Project in another location ...



8. Then do the following:



- Navigate to the H drive
 - Class
 - L4-580 Class
 - Your FieldWorks project folder - in this example Thai_Larry
 - Find the project file with the colorful icon. Click once on it.
 - Click the OK button.
9. This will bring you back to the Project settings dialog (as shown in Step 5 above). Click OK.
10. You may be asked if you want to Load the Project. Click Yes. Your data should now load! Hooray!