

***Miami Junior Redhawks***  
**COTTONTAIL CLASSIC**  
**APRIL 4, 2026**



***Miami University Equestrian Center***

***4950 Oxford- Trenton Rd.***  
***Oxford, OH 45056***



**[www.showyeda.com](http://www.showyeda.com)**



*Our mission is to provide an equestrian riding program for youth students, via both instructional and experiential learning opportunities. To accomplish this, we will engage in equestrian competitions, instructional clinics, networking events and occasions for recruitment that includes but not limited to scholarship disbursements.*

### Show Officials

Judge(s)	Luke Brock Judge A Bekah Irish Judge B
Ring Steward	Michaela Sherlock & Shelby Zimmerman
Show Steward	Lacie Yeager
Show Manager	Beth Frey
Show Secretary	Laura Smith
Announcer	Ethan Blake
Medical Personal	OFD

### Patterns & Schedule of Classes

Class	PATTERNS
Senior High Diamond Reining	NRHA #9
Senior High Diamond Pattern/Rail Horsemanship	# 9
Junior & Senior High Sapphire Ranch Riding	# 9
Junior & Senior High Sapphire Pattern/Rail Horsemanship	# 9
Junior & Senior High Ruby Pattern Horsemanship	# 9
Junior & Senior High Emerald Pattern Horsemanship	# 9
Junior & Senior High Opal Pattern Horsemanship	# 9
Elementary Pearl Pattern Horsemanship	# 9
EWD Amber and Topaz Pattern Horsemanship	# 9
Alumni High Sapphire Ranch Riding	# 9
Alumni High Sapphire Pattern/Rail Horsemanship	# 9
Alumni High Emerald Pattern Horsemanship	# 9
Alumni High Opal Pattern Horsemanship	# 9

The pattern book can be found on [SHOWYEDA.com](http://SHOWYEDA.com)

# SATURDAY

**7:00 am Coaches Meeting/ Draw Horses 8:00 am Schooling of Horses 9:00 am Competition Begins:**

Class 1.	Group 20 Senior High Diamond Reining Split A	7
Class 2.	Group 20 Senior High Diamond Reining Split B	7
Class 3.	Group 1 Elementary Pearl Rail Horsemanship Split A	7
Class 4.	Group 1 Elementary Pearl Rail Horsemanship Split B	6
Class 5.	Group 4 Junior/Senior High Opal Pattern Horsemanship Split A	8
Class 6.	Group 4 Junior/Senior High Opal Pattern Horsemanship Split B	9
Class 7.	Group 30 Alumni Opal Pattern Horsemanship	4
Class 8.	Group 19 Senior High Diamond Rail/Pattern Horsemanship Split A	7
Class 9.	Group 19 Senior High Diamond Rail/Pattern Horsemanship Split B	6
Class 10.	Group 5 Junior/ <b>Senior</b> High Emerald Rail Horsemanship Split A	7
Class 11.	Group 31 Alumni Emerald Rail Horsemanship	1
Class 12.	Group 5 Junior/ <b>Senior</b> High Emerald Rail Horsemanship Split B	8
Class 13.	Group 33 Alumni Sapphire Rail/Pattern Horsemanship Rail	2
Class 14.	Group 13 Junior/ <b>Senior</b> High Emerald Rail Horsemanship Split C	7
Class 15.	Group 2 Elementary Pearl Pattern Horsemanship Split A	6
Class 16.	Group 2 Elementary Pearl Pattern Horsemanship Split B	7
Class 17.	Group 9 Junior/ <b>Senior</b> High Sapphire Rail/Pattern Horsemanship Split A	7
Class 18.	Group 17 Junior/ <b>Senior</b> High Sapphire Rail/Pattern Horsemanship Split B	6
Class 19/21	Group 21/23 EWD Amber Rail Assisted Horsemanship	1
Class 20/22	Group 22/24 EWD Amber Pattern Assisted Horsemanship	1
<del>Class 23.</del>	<del>Group 27 EWD Topaz Rail Independent Horsemanship - Cancelled</del>	0
<del>Class 24.</del>	<del>Group 28 EWD Topaz Pattern Independent Horsemanship - Cancelled</del>	0
	<b>**Lunch Break**</b>	
Class 25.	Group 10 Junior/ <b>Senior</b> High Sapphire Ranch Riding Split A	6
Class 26.	Group 18 Junor/ <b>Senior</b> High Sapphire Ranch Riding Split B	7
Class 27.	Group 34 Alumni Sapphire Ranch Riding	2
Class 28.	Group 3 Junior/Senior High Opal Rail Horsemanship Split A	9
Class 29.	Group 29 Alumni Opal Rail Horsemanship	4
Class 30.	Group 3 Junior/Senior High Opal Rail Horsemanship Split B	8
Class 31.	Group 8 Junior High Ruby Pattern Horsemanship	8
Class 32.	Group 16 Senior High Ruby Pattern Horsemanship	9
Class 33.	Group 32 Alumni Emerald Pattern Horsemanship	1
Class 34.	Group 6 Junior/ <b>Senior</b> High Emerald Pattern Horsemanship Split A	7
Class 35.	Group 6 Junior/ <b>Senior</b> High Emerald Pattern Horsemanship Split B	8
Class 36.	Group 14 Junior/ <b>Senior</b> High Emerald Pattern Horsemanship Split C	8
Class 37.	Group 7 Junior High Ruby Rail Horsemanship	8
Class 38.	Group 15 Senior High Ruby Rail Horsemanship	9

**Class 1 Group 20 Senior High Diamond Reining Split A (7)**

Sponsored By: American Quarter Horse Assn

Back#	Name	Team	Draw	Horse
164	Miranda Kintz	Buckeye Riders	3	Scooby
608	Ava Grimm	Champion Hill Equestrian Team	4	TJ
1039	McKenna Laughery	Circle M Equestrian Team	5	Pippa
1447	Adam Akers	Miami Jr Redhawks	6	Leo
111	Lauren Hoover	Southern Ohio Equestrian Team	7	Scooby
2418	Paisley Fix	TMC Equestrian Team	1	Pippa
1525	Charlotte Cynor	Top Tier Equestrian Team	2	Leo

Judge A: 1st: 1447 2nd: 111 3rd: 1039 4th: 1525 5th: 608 6th: 2418Judge B: 1st: 1447 2nd: 1039 3rd: 111 4th: 1525 5th: 608 6th: 2418**Class 2 Group 20 Senior High Diamond Reining Split B (7)**

Sponsored By: American Quarter Horse Assn

Back#	Name	Team	Draw	Horse
411	Kathryn Kraft	Champion Hill Equestrian Team	3	Pippa
1384	Adela Christiansen	Concord Equestrian Center	4	Scooby
1150	Julia Kane	Double M YEDA	5	TJ
2262	Elle Moeller	Miami Jr Redhawks	6	Leo
1793	Kendall Lebo	Southern Ohio Equestrian Team	7	Pippa
246	Haley Schwiebert	Team BC	1	TJ
251	Ava Pope	Top Tier Equestrian Team	2	Leo

Judge A: 1st: 1384 2nd: 1793 3rd: 246 4th: 1150 5th: 2262 6th: 251Judge B: 1st: 246 2nd: 1384 3rd: 1793 4th: 251 5th: 1150 6th: 2262**Class 3 Group 1 Elementary Pearl Rail Horsemanship Split A (7)**

Sponsored By: Lollipops and Polkadots

Back#	Name	Team	Draw	Horse
1779	Julia Stone	Bridlewood Crossings Equestrian Team	7	Ali
1644	Stella Oaklief	Champion Hill Equestrian Team	1	Kandi
1406	Harper Sheikh	Concord Equestrian Center	2	KC
1673	Josie Martin	Miami Jr Redhawks	3	Tiger
250	Skye Ramey	Puthoff Equestrian Team	4	Whiskey
654	Rauri Otten	Red Horse Training	5	George
2404	Charlie Gilleland	Top Tier Equestrian Team	6	Gus

Judge A: 1st: 250 2nd: 1644 3rd: 1673 4th: 1779 5th: 1406 6th: 2404Judge B: 1st: 250 2nd: 1644 3rd: 1406 4th: 1673 5th: 1779 6th: 2404

**Class 4 Group 1 Elementary Pearl Rail Horsemanship Split B (6)**

Sponsored By: Lollipops and Polkadots

Back#	Name	Team	Draw	Horse
716	Adalina Binegar	Champion Hill Equestrian Team	3	Oreo
561	Hadley Tiller	Concord Equestrian Center	4	Whiskey
722	Bellamy Fouch	Indiana Elite Equestrians	5	George
474	Haisley Oda	Puthoff Equestrian Team	6	Gus
758	Evie Marshall	Red Horse Training	1	Kandi
2476	Alyssa Stone	Diamond T19 Ranch	2	KC

Judge A: 1st: 654 2nd: 474 3rd: 2476 4th: 722 5th: 716 6th: 561Judge B: 1st: 474 2nd: 654 3rd: 716 4th: 561 5th: 722 6th: 2476**Class 5 Group 4 Junior/Senior High Opal Pattern Horsemanship Split A (8)**

Sponsored By: Puthoff Equestrian Team

Back#	Name	Team	Draw	Horse
1364	Abby Crosier	Concord Equestrian Center Blue	5	Oreo
2030	Cora Blanton	Diamond T19 Ranch	6	Cal
173	Hannah Stewart	Concord Equestrian Center Blue	7	Gus
1983	Maverick Moore	Miami Jr Redhawks	8	Shamrock
986	Natalie Craft	Puthoff Equestrian Team	1	Invy
2191	Jolee Rogers	Diamond T19 Ranch	2	Kandi
<b>2192</b>	<b>Riley Shafer</b>	<b>Red Horse Training</b>	3	KC
<b>2312</b>	<b>Isabel Lopez</b>	<b>Saving Grace Equestrian Team</b>	4	Lola

Judge A: 1st: 1364 2nd: 2192 3rd: 2191 4th: 173 5th: 986 6th: 1983Judge B: 1st: 1364 2nd: 2192 3rd: 2191 4th: 986 5th: 173 6th: 1983

**Class 6 Group 12 Junior/Senior High Opal Pattern Horsemanship Split B (9)**

Sponsored By: Katie Van Slyke

Back#	Name	Team	Draw	Horse
1451	Paisley May Dryden	Southern Ohio Equestrian Team	6	Tiger
2091	Cecelia Rosauer	Red Horse Training	7	Whiskey
1691	Mae Proeschel	Miami Jr. Redhawks	8	Cal
<b>1029</b>	<b>Amelia Emery</b>	<b>Concord Equestrian Center</b>	9	Shamrock
2023	Lola McFadden	Diamond T19 Ranch	1	Invy
547	Emilia Wadkins	Double M YEDA	2	Jellybean
867	Claire Williams	Concord Equestrian Center Blue	3	Larry
230	Lucy Johnson	Miami Jr Redhawks	4	Lola
<b>794</b>	<b>Tate Hampton</b>	<b>Puthoff Equestrian Team</b>	5	Milo

Judge A: 1st: 1029 2nd: 1691 3rd: 547 4th: 867 5th: 1451 6th: 794Judge B: 1st: 1029 2nd: 547 3rd: 867 4th: 1691 5th: 794 6th: 1451**Class 7 Group 30 Alumni Opal Pattern Horsemanship (4)**

Sponsored By: Paradise Leather

Back#	Name	Team	Draw	Horse
1288	Tracey Braun	Double M YEDA	2	Stewie
1021	Madelyn Crossley	Red Horse Training	3	Whiskey
831	Emily Steinberg	Red Horse Training	4	Gus
1947	John Finegan	Red Horse Training	1	Milo

Judge A: 1st: 1021 2nd: 1288 3rd: 831 4th: 1947 5th: \_\_\_\_\_ 6th: \_\_\_\_\_Judge B: 1st: 1021 2nd: 1288 3rd: 1947 4th: 831 5th: \_\_\_\_\_ 6th: \_\_\_\_\_**Class 8 Group 19 Senior High Diamond Rail/Pattern Horsemanship Split A (7)**

Sponsored By: Ag Pro

Back#	Name	Team	Draw	Horse
164	Miranda Kintz	Buckeye Riders	7	Jet
608	Ava Grimm	Champion Hill Equestrian Team	1	Bronson
1039	McKenna Laughery	Circle M Equestrian Team	2	Romeo
1447	Adam Akers	Miami Jr Redhawks	3	Zeppelin
111	Lauren Hoover	Southern Ohio Equestrian Team	4	Nolan
2418	Paisley Fix	TMC Equestrian Team	5	Gizmo
1525	Charlotte Cynor	Top Tier Equestrian Team	6	Roxy

Judge A: 1st: 111 2nd: 2418 3rd: 164 4th: 1447 5th: 1525 6th: 1039Judge B: 1st: 111 2nd: 1447 3rd: 2418 4th: 164 5th: 1039 6th: 1525

**Class 9 Group 19 Senior High Diamond Rail/Pattern Horsemanship Split B (6)**

Sponsored By: Ag Pro

Back#	Name	Team	Draw	Horse
411	Kathryn Kraft	Champion Hill Equestrian Team	5	Gizmo
1384	Adela Christiansen	Concord Equestrian Center	6	Boone
1150	Julia Kane	Double M YEDA	1	Bronson
2262	Elle Moeller	Miami Jr Redhawks	2	Romeo
246	Haley Schwiebert	Team BC	3	Zeppelin
251	Ava Pope	Top Tier Equestrian Team	4	Nolan

Judge A: 1st: 251 2nd: 1150 3rd: 246 4th: 1384 5th: 2262 6th: 411Judge B: 1st: 1150 2nd: 251 3rd: 1384 4th: 246 5th: 2262 6th: 411**Class 10 Group 5 Junior/Senior High Emerald Rail Horsemanship Split A (7)**

Sponsored By: Concord Equestrian Team

Back#	Name	Team	Draw	Horse
2132	Rylan Durham	Miami Jr Redhawks	5	Tiger
640	Kenzie Huizenga	Puthoff Equestrian Team	6	Virgil
1146	Gabriella Thayer	Red Horse Training	7	Shamrock
1750	Harvest Dailey	Southern Ohio Equestrian Team	1	Gracie
<b>1944</b>	<b>Lily Finkbine</b>	<b>Miami Jr Redhawks</b>	2	June
<b>129</b>	<b>Briar Barrier</b>	<b>Indiana Elite Equestrians</b>	3	Kody
<b>2002</b>	<b>Luciana Beaubien</b>	<b>Top Tier Equestrian Team</b>	4	Larry

Judge A: 1st: 1750 2nd: 129 3rd: 640 4th: 2002 5th: 2132 6th: 1146Judge B: 1st: 129 2nd: 1750 3rd: 2002 4th: 1146 5th: 1944 6th: 640**Class 11 Group 31 Alumni Emerald Rail Horsemanship (1)**

Sponsored By: Arabian Horse Assn

Back#	Name	Team	Draw	Horse
1476	Jordan Harvey	Red Horse Training	2	Boone

Judge A: 1st: 1476 2nd:        3rd:        4th:        5th:        6th:       Judge B: 1st: 1476 2nd:        3rd:        4th:        5th:        6th:

**Class 12 Group 5 Junior/Senior High Emerald Rail Horsemanship Split B (8)**

Sponsored By: Concord Equestrian Team

Back#	Name	Team	Draw	Horse
390	Evelyn Gold	Concord Equestrian Center Blue	8	Shamrock
213	Peyton Westfall	Equine Differences JV	1	Jellybean
<b>1984</b>	<b>Isabel Johnson</b>	<b>Miami Jr Redhawks</b>	2	June
<b>138</b>	<b>Payge Oda</b>	<b>Puthoff Equestrian Team</b>	3	Kody
	<b>Can only show</b>	<b>To judge A</b>		
888	Josie Klepinger	Puthoff Equestrian Team	4	Larry
226	Logan Cotterell	Steadfast Equestrian Team	5	Tiger
<b>438</b>	<b>Isla Weekley</b>	<b>Miami Jr Redhawks</b>	6	Virgil
<b>157</b>	<b>Jessica Savage</b>	<b>Steadfast Equestrian Team</b>	7	Tater

Judge A: 1st: 390 2nd: 888 3rd: 157 4th: 138 5th: 226 6th: 213Judge B: 1st: 390 2nd: 888 3rd: 213 4th: 157 5th: 1984 6th: 438**Class 13 Group 33 Alumni Sapphire Rail/Pattern Horsemanship Rail (2)**

Back#	Name	Team	Draw	Horse
954	Elizabeth Fouch	Indiana Elite Equestrians	<b>1</b>	Gracie
2276	Kiera Lovell	Red Horse Training	<b>2</b>	Zeppelin

Judge A: 1st: 954 2nd: 2276 3rd:        4th:        5th:        6th:       Judge B: 1st:        2nd:        3rd:        4th:        5th:        6th:       **Class 14 Group 13 Junior/Senior High Emerald Rail Horsemanship Split C (7)**

Sponsored By: Double Bs Equestrian Team

Back#	Name	Team	Draw	Horse
319	Abigail Stewart	Concord Equestrian Center	6	Tiger
1032	Abigail Johnson	Double M YEDA	7	Boone
<b>2011</b>	<b>Amabel Jones</b>	<b>Miami Jr Redhawks</b>	1	Gracie
132	Josie Lukachek	Team BC	2	Jellybean
<b>1864</b>	<b>Lauryn Dickey</b>	<b>Puthoff Equestrian Team</b>	3	June
<b>379</b>	<b>Paysen Fitzpatrick</b>	<b>Steadfast Equestrian Team</b>	4	Kody
872	Marissa Shipman	Crooked Creek Equestrian Team	5	Larry

Judge A: 1st: 132 2nd: 319 3rd: 872 4th: 1864 5th: 1032 6th: 379Judge B: 1st: 319 2nd: 132 3rd: 1032 4th: 1864 5th: 872 6th: 2011

**Class 15 Group 2 Elementary Pearl Pattern Horsemanship Split A (6)**

Sponsored By: Lollipops and Polkadots

Back#	Name	Team	Draw	Horse
716	Adalina Binigar	Champion Hill Equestrian Team	3	Oreo
561	Hadley Tiller	Concord Equestrian Center	4	George
722	Bellamy Fouch	Indiana Elite Equestrians	5	Gus
474	Haisley Oda	Puthoff Equestrian Team	6	Chauncey
758	Evie Marshall	Red Horse Training	1	Invy
2476	Alyssa Stone	Diamond T 19 Ranch	2	Jellybean

Judge A: 1st: 561 2nd: 654 3rd: 474 4th: 716 5th: 722 6th: 2476Judge B: 1st: 561 2nd: 716 3rd: 654 4th: 474 5th: 722 6th: 2476**Class 16 Group 2 Elementary Pearl Pattern Horsemanship Split B (7)**

Sponsored By: Lollipops and Polkadots

Back#	Name	Team	Draw	Horse
1779	Julia Stone	Bridlewood Crossings Equestrian Team	7	Jet
1644	Stella Oaklief	Champion Hill Equestrian Team	1	Invy
1406	Harper Sheikh	Concord Equestrian Center	2	Kandi
1673	Josie Martin	Miami Jr Redhawks	3	Oreo
250	Skye Ramey	Puthoff Equestrian Team	4	Whiskey
654	Rauri Otten	Red Horse Training	5	George
2404	Charlie Gilleland	Top Tier Equestrian Team	6	Gus

Judge A: 1st: 1644 2nd: 1406 3rd: 250 4th: 1779 5th: 2404 6th: 1673Judge B: 1st: 1406 2nd: 250 3rd: 1644 4th: 2404 5th: 1779 6th: 1673**Class 17 Group 9 Junior/Senior High Sapphire Rail/Pattern Horsemanship Split A (7)**

Sponsored By: Moran Saddlery

Back#	Name	Team	Draw	Horse
400	Astrid Bland	Miami Jr Redhawks	3	Tater
<b>1554</b>	<b>Addison Brossenne</b>	<b>Southern Ohio Equestrian Team</b>	4	Nolan
242	Raegan Keller	Miami Jr Redhawks	5	Ali
158	Preslie Dry	Southern Ohio Equestrian Team	6	Jet
<b>629</b>	<b>Brennan Caldwell</b>	<b>Red Horse Training</b>	7	Zeppelin
1001	Annabel Steffens	Top Tier Equestrian Team	1	Bronson
422	Kennedy Ramey	Puthoff Equestrian Team	2	Romeo

Judge A: 1st: 1001 2nd: 158 3rd: 629 4th: 400 5th: 422 6th: 242Judge B: 1st: 1001 2nd: 158 3rd: 422 4th: 629 5th: 242 6th: 400

**Class 18 Group 17 Junior/Senior High Sapphire Rail/Pattern Horsemanship Split B (6)**

Sponsored By: Haala Denim

Back#	Name	Team	Draw	Horse
<del>1527</del>	<del>Cutter Baker</del>	<del>Miami Jr Redhawks</del>		SCRATCH
<b>2183</b>	<b>Regan Dunn</b>	<b>Double M YEDA</b>	5	Nolan
<b>2075</b>	<b>Maya Wieland</b>	<b>Miami Jr Redhawks</b>	6	Roxy
508	David Cooper	Team BC	7	Ali
851	Bella O'Dell	Red Horse Training	1	Bronson
<b>612</b>	<b>Jocelyn Holtz</b>	<b>Southern Ohio Equestrian Team</b>	2	Romeo
665	Rylee Hanselman	Southern Ohio Equestrian Team	4	Tater

Judge A: 1st: 2183 2nd: 851 3rd: 612 4th: 665 5th: 2075 6th: 508Judge B: 1st: 612 2nd: 2183 3rd: 665 4th: 2075 5th: 851 6th: 508**Class 19/21 Group 21 EWD Amber Rail Independent/Assisted Horsemanship (1)**

Back#	Name	Team	Draw	Horse
337	Elizabeth Klopfenstein	Team BC	<b>1</b>	Bronson

Judge A: 1st: 337 2nd:      3rd:      4th:      5th:      6th:     Judge B: 1st: 337 2nd:      3rd:      4th:      5th:      6th:     **Class 20/22 Group 22 EWD Amber Pattern Independent/Assisted Horsemanship (1)**

Back#	Name	Team	Draw	Horse
337	Elizabeth Klopfenstein	Team BC	<b>1</b>	Bronson

Judge A: 1st: 337 2nd:      3rd:      4th:      5th:      6th:     Judge B: 1st: 337 2nd:      3rd:      4th:      5th:      6th:     

# Class 23 & 24 Canceled

**\*\*Lunch Break\*\***

**Class 25 Group 10 Junior/Senior High Sapphire Ranch Horsemanship Ranch Riding Split A (6)**

Sponsored By: Leaf Filter North LLC

Back#	Name	Team	Draw	Horse
400	Astrid Bland	Miami Jr Redhawks	1	Leo
<del>1527</del>	<del>Cutter Baker</del>	<del>Miami Jr Redhawks</del>		SCRATCH
<b>1554</b>	<b>Addison Brossenne</b>	<b>Southern Ohio Equestrian Team</b>	2	Pippa
851	Bella O'Dell	Red Horse Training	3	Scooby
<b>2183</b>	<b>Regan Dunn</b>	<b>Double M YEDA</b>	4	TJ
665	Rylee Hanselman	Southern Ohio Equestrian Team	6	Pippa
508	David Cooper	Team BC	7	Scooby

Judge A: 1st: 1554 2nd: 665 3rd: 508 4th: 851 5th: 2183 6th: 400Judge B: 1st: 1554 2nd: 665 3rd: 851 4th: 2183 5th: 508 6th: 400**Class 26 Group 18 Junior/Senior High Sapphire Ranch Horsemanship Ranch Riding Split B (7)**

Sponsored By: National Snaffle Bit Assn

Back#	Name	Team	Draw	Horse
242	Raegan Keller	Miami Jr Redhawks	<b>5</b>	Leo
1001	Annabel Steffens	Top Tier Equestrian Team	<b>6</b>	Scooby
<b>2075</b>	<b>Maya Wieland</b>	<b>Miami Jr Redhawks</b>	7	TJ
<b>629</b>	<b>Brennan Caldwell</b>	<b>Red Horse Training</b>	1	Leo
158	Preslie Dry	Southern Ohio Equestrian Team	2	Pippa
<b>612</b>	<b>Jocelyn Holtz</b>	<b>Southern Ohio Equestrian Team</b>	3	Scooby
422	Kennedy Ramey	Puthoff Equestrian Team	4	TJ

Judge A: 1st: 158 2nd: 629 3rd: 422 4th: 1001 5th: 612 6th: 2075Judge B: 1st: 158 2nd: 629 3rd: 1001 4th: 612 5th: 422 6th: 242**Class 27 Group 34 Alumni Sapphire Ranch Riding (2)**

Sponsored By: Greenwood Chevrolet

Back#	Name	Team	Draw	Horse
954	Elizabeth Fouch	Indiana Elite Equestrians	2	TJ
2276	Kiera Lovell	Red Horse Training	1	Scooby

Judge A: 1st: 2276 2nd: 954 3rd:        4th:        5th:        6th:       Judge B: 1st: 2276 2nd: 954 3rd:        4th:        5th:        6th:

**Class 28 Group 3 Junior/Senior High Opal Rail Horsemanship Split A (9)**

Sponsored By: Timmermans Show Team

Back#	Name	Team	Draw	Horse
<b>2192</b>	<b>Riley Shafer</b>	<b>Red Horse Training</b>	4	KC
986	Natalie Craft	Puthoff Equestrian Team	5	Lola
867	Claire Williams	Concord Equestrian Center Blue	6	Stewie
2191	Jolee Rogers	Diamond T29	7	Tiger
547	Emilia Wadkins	Double M YEDA	8	Whiskey
1983	Maverick Moore	Miami Jr Redhawks	9	Gus
<b>2312</b>	<b>Isabel Lopez</b>	<b>Saving Grace Equestrian Team</b>	1	Invy
1364	Abby Crosier	Concord Equestrian Center Blue	2	Jellybean
2030	Cora Blanton	Diamond T19 Ranch	3	Kandi

Judge A: 1st: 1364 2nd: 2192 3rd: 867 4th: 2030 5th: 2191 6th: 986Judge B: 1st: 1364 2nd: 867 3rd: 547 4th: 2192 5th: 2030 6th: 986**Class 29 Group 29 Alumni Opal Rail Horsemanship (4)**

Sponsored By: American Paint Horse Assn

Back#	Name	Team	Draw	Horse
1288	Tracey Braun	Double M YEDA	2	Stewie
1021	Madelyn Crossley	Red Horse Training	3	Boone
831	Emily Steinberg	Red Horse Training	4	Jet
1947	John Finegan	Red Horse Training	1	Milo

Judge A: 1st: 1021 2nd: 831 3rd: 1288 4th: 1947 5th: \_\_\_\_\_ 6th: \_\_\_\_\_Judge B: 1st: 831 2nd: 1021 3rd: 1288 4th: 1947 5th: \_\_\_\_\_ 6th: \_\_\_\_\_**Class 30 Group 3 Junior/Senior High Opal Rail Horsemanship Split B (8)**

Back#	Name	Team	Draw	Horse
<b>794</b>	<b>Tate Hampton</b>	<b>Puthoff Equestrian Team</b>	<b>1</b>	Invy
173	Hannah Stewart	Concord Equestrian Center Blue	<b>2</b>	Kandi
230	Lucy Johnson	Miami Jr Redhawks	<b>3</b>	KC
2091	Cecelia Rosauer	Red Horse Training	<b>4</b>	Lola
2023	Lola McFadden	Diamond T9 Ranch	<b>5</b>	Oreo
<b>1029</b>	<b>Amelia Emery</b>	<b>Concord Equestrian Center</b>	<b>6</b>	Whiskey
1451	Paisley May Dryden	Southern Ohio Equestrian Team	<b>7</b>	Gus
1691	Mae Proeschel	Miami Jr Redhawks	<b>8</b>	Gizmo

Judge A: 1st: 1691 2nd: 173 3rd: 1029 4th: 1451 5th: 2091 6th: 2023Judge B: 1st: 173 2nd: 1029 3rd: 2091 4th: 1691 5th: 1451 6th: 230

**Class 31 Group 8 Junior High Ruby Pattern Horsemanship (8)**

Sponsored By: Ross Environmental Services

Back#	Name	Team	Draw	Horse
168	Tennyson Keafer	Circle M Equestrian Team	3	Romeo
556	Marin Gold	Concord Equestrian Center Blue	4	Cal
1017	Zailey Mershon	Double M YEDA	5	George
2185	Kailani Van Herk	Indiana Elite Equestrians	6	Gizmo
188	Emma Blevins	Miami Jr Redhawks	7	Shamrock
696	Avery Ramey	Puthoff Equestrian Team	8	Ali
418	Lainey Fife	Red Horse Training	1	Bronson
387	Hadley Streaker	Team BC	2	Jellybean

Judge A: 1st: 2185 2nd: 1017 3rd: 387 4th: 168 5th: 696 6th: 556Judge B: 1st: 2185 2nd: 1017 3rd: 696 4th: 387 5th: 188 6th: 168**Class 32 Group 16 Senior High Ruby Pattern Horsemanship (9)**

Sponsored By: Schneiders Saddlery

Back#	Name	Team	Draw	Horse
965	Elena Jordan	Double M YEDA	9	Ali
135	Annabella Goodall	Equine Differences	1	Romeo
1650	Olivia Wehner	Miami Jr Redhawks	2	Zeppelin
1723	Amina Jelil	Miami Jr Redhawks	3	George
1957	Elizabeth Miles	Miami Jr Redhawks	4	Tater
1614	Jessica Wehner	Miami Jr Redhawks	5	Chauncey
1173	Valentina Wortman	Puthoff Equestrian Team	6	Nolan
443	Madison Baynes	Southern Ohio Equestrian Team	7	Roxy
489	Emily Klopfenstein	Team BC	8	Boone

Judge A: 1st: 1173 2nd: 135 3rd: 965 4th: 489 5th: 443 6th: 1957Judge B: 1st: 1173 2nd: 965 3rd: 135 4th: 1723 5th: 1957 6th: 1614**Class 33 Group 32 Alumni Emerald Pattern Horsemanship (1)**

Sponsored By: Intercollegiate Horse Shows Assn

Back#	Name	Team	Draw	Horse
1476	Jordan Harvey	Red Horse Training	2	Shamrock

Judge A: 1st: 1476 2nd:        3rd:        4th:        5th:        6th:       Judge B: 1st: 1476 2nd:        3rd:        4th:        5th:        6th:

**Class 34 Group 6 Junior/Senior High Emerald Pattern Horsemanship Split A (7)**

Sponsored By: Southern Ohio Equestrian Team

Back#	Name	Team	Draw	Horse
<b>379</b>	<b>Paysen Fitzpatrick</b>	<b>Steadfast Equestrian Team</b>	7	Roxy
1032	Abigail Johnson	Double M YEDA	1	Larry
<b>319</b>	<b>Abigail Stewart</b>	<b>Concord Equestrian Center</b>	2	Lola
640	Kenzie Huizenga	Puthoff Equestrian Team	3	Virgil
1146	Gabriella Thayer	Red Horse Training	4	Cal
1750	Harvest Dailey	Southern Ohio Equestrian Team	5	Chauncey
<b>1984</b>	<b>Isabel Johnson</b>	<b>Miami Jr Redhawks</b>	6	Gizmo

Judge A: 1st: 1750 2nd: 319 3rd: 1984 4th: 640 5th: 379 6th: 1146Judge B: 1st: 319 2nd: 1984 3rd: 1750 4th: 640 5th: 1032 6th: 379**Class 35 Group 6 Junior/Senior High Emerald Pattern Horsemanship Split B (8)**

Sponsored By: Southern Ohio Equestrian Team

Back#	Name	Team	Draw	Horse
390	Evelyn Gold	Concord Equestrian Center Blue	3	Lola
<b>1864</b>	<b>Lauryn Dickey</b>	<b>Puthoff Equestrian Team</b>	8	Jet
2132	Rylan Durham	Miami Jr Redhawks	4	Cal
<b>2002</b>	<b>Luciana Beaubien</b>	<b>Top Tier Equestrian Team</b>	5	Gizmo
226	Logan Cotterell	Steadfast Equestrian Team	6	Boone
132	Josie Lukachek	Team BC	7	Ali
<b>438</b>	<b>Isla Weekley</b>	<b>Miami Jr Redhawks</b>	1	Kandi
<b>129</b>	<b>Briar Barrier</b>	<b>Indiana Elite Equestrians</b>	2	Kody

Judge A: 1st: 129 2nd: 2002 3rd: 390 4th: 1864 5th: 132 6th: 226Judge B: 1st: 129 2nd: 2002 3rd: 226 4th: 390 5th: 1864 6th: 132

**Class 36 Group 14 Junior/Senior High Emerald Pattern Horsemanship Split C (8)**

Sponsored By: Brinks Hattery

Back#	Name	Team	Draw	Horse
<b>1944</b>	<b>Lily Finkbine</b>	<b>Miami Jr Redhawks</b>	3	Kody
213	Peyton Westfall	Equine Differences JV	4	Larry
872	Marissa Shipman	Crooked Creek Equestrian Team	5	Virgil
<b>138</b>	<b>Payge Oda</b>	<b>Puthoff Equestrian Team</b>	6	Tater
	<b>Can only show to</b>	<b>Judge A</b>		
<b>2011</b>	<b>Amabel Jones</b>	<b>Miami Jr Redhawks</b>	7	Chauncey
888	Josie Klepinger	Puthoff Equestrian Team	8	Jet
<b>157</b>	<b>Jessica Savage</b>	<b>Steadfast Equestrian Team</b>	1	Invy
714	MacKenzie Reed	DMB Performance Horses	2	Jellybean

Judge A: 1st: 138 2nd: 2011 3rd: 872 4th: 157 5th: 888 6th: 714Judge B: 1st: 2011 2nd: 872 3rd: 157 4th: 714 5th: 1944 6th: 213**Class 37 Group 7 Junior High Ruby Rail Horsemanship (8)**

Sponsored By: Lakota Of Ohio

Back#	Name	Team	Draw	Horse
168	Tennyson Keafer	Circle M Equestrian Team	3	Milo
556	Marin Gold	Concord Equestrian Center Blue	4	Cal
1017	Zailey Mershon	Double M YEDA	5	Tater
2185	Kailani Van Herk	Indiana Elite Equestrians	6	Chauncey
188	Emma Blevins	Miami Jr Redhawks	7	Roxy
696	Avery Ramey	Puthoff Equestrian Team	8	Boone
418	Lainey Fife	Red Horse Training	1	Derby
387	Hadley Streacker	Team BC	2	Gracie

Judge A: 1st: 2185 2nd: 418 3rd: 556 4th: 696 5th: 387 6th: 188Judge B: 1st: 2185 2nd: 387 3rd: 696 4th: 188 5th: 556 6th: 168

**Class 38 Group 15 Senior High Ruby Rail Horsemanship (9)**

Sponsored By: White Nickel Ranch Team

Back#	Name	Team	Draw	Horse
965	Elena Jordan	Double M YEDA	2	Gracie
135	Annabella Goodall	Equine Differences	3	Milo
1650	Olivia Wehner	Miami Jr Redhawks	4	Zeppelin
1723	Amina Jelil	Miami Jr Redhawks	5	Cal
1957	Elizabeth Miles	Miami Jr Redhawks	6	Chauncey
1614	Jessica Wehner	Miami Jr Redhawks	7	Nolan
1173	Valentina Wortman	Puthoff Equestrian Team	8	Shamrock
443	Madison Baynes	Southern Ohio Equestrian Team	9	Roxy
489	Emily Klopfenstein	Team BC	1	Derby

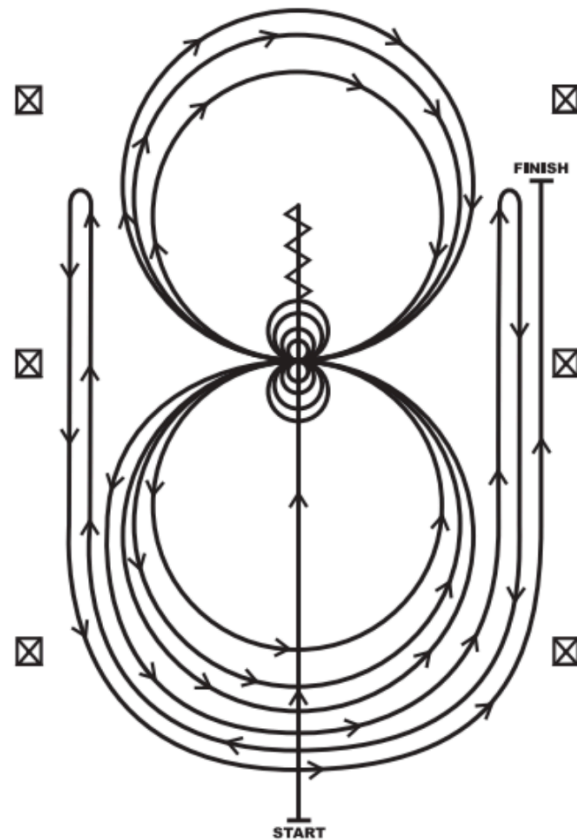
Judge A: 1st: 1173 2nd: 965 3rd: 489 4th: 1957 5th: 135 6th: 443Judge B: 1st: 965 2nd: 1173 3rd: 1650 4th: 135 5th: 443 6th: 1614**Show Results**

SR High School Team		JR High School Team	
SR High Point Team	A:Concord Equestrian B:Concord Equestrian	JR High Point Team	A;Southern Ohio B:PutHoff Equestrian Team
SR Res. High Point Team	A:Double M YEDA B:Miami Junior Redhawks	JR Res. High Point Team	A;Concord Equestrian Blue B:Concord Equestrian Blue
SR High Point Rider	A:Lauren Hoover Southern Ohio Equestrian Team B:Adam Akers Miami Jr Redhawks	JR High Point Rider	A:Preslie Dry Southern Ohio Equestrian Team B:Preslie Dry Southern Ohio Equestrian Team
SR Res. High Point Rider	A:Adela Christiansen Concord Equestrian Center B:Lauren Hoover Southern Ohio Equestrian Team	JR Res. High Point Rider	A:Annabel Steffens Top Tier Equestrian Team B:Annabel Steffens Top Tier Equestrian Team
Elementary Pearl   Rider Result			
Pearl . High Point---Rider	A:Rauri Otten Red Horse Training B:Skye Ramey Puthoff Equestrian Team	Pearl Res. High Point Rider	A:Stella Oaklief Champion Hill Equestrian Team B:Harper Sheikh Concord Equestrian Team
<b>Sportsmanship Award(s)</b>		Bri DeRusio Concord Equestrian Team & Paisley Vize Southern Ohio Equestrian Team	
<b>Horse of the Show</b>		Romeo Miami Jr. Redhawks	
<b>Best Groomed Horse of the Show</b>		Gus Puthoff Equestrian Team	





## NRHA PATTERN 9



1. Run past the center marker and do a sliding stop. Back up to the center of the arena or at least ten feet (three meters). Hesitate.
2. Complete four spins to the right. Hesitate.
3. Complete four and one-quarter spins to the left so that horse is facing the left wall or fence. Hesitate.
4. Beginning on the left lead, complete three circles to the left: the first circle small and slow; the next two circles large and fast. Change leads at the center of the arena.
5. Complete three circles to the right: the first circle small and slow; the next two circles large and fast. Change leads at the center of the arena.
6. Begin a large circle to the left but do not close this circle. Run up the right side of the arena past the center marker and do a right rollback at least twenty feet (six meters) from the wall or fence—no hesitation.
7. Continue back around the previous circle but do not close this circle. Run up the left side of the arena past the center marker and do a left rollback at least twenty feet (six meters) from the wall or fence—no hesitation.
8. Continue back around previous circle but do not close this circle. Run up right side of the arena past the center marker and do a sliding stop at least twenty feet (six meters) from the wall or fence. Hesitate to demonstrate completion of the pattern.

**YEDA** Amber EWD Walk Pattern 9,10 **YEDA**

1. Walk to A  
 2. At A, walk to B  
 3. At B, extended walk to C  
 4. At C, extended walk circle to the left  
 5. Continue extended walk to D  
 6. At D, regular walk to E  
 7. At E, stop  
 8. Back 5 steps.

Walk -----  
 Extended Walk - - - - -  
 Jog - - - -  
 Extended Jog - - - -  
 Back ← ○○○○  
 Marker Ⓐ

**YEDA**  
 YOUTH EQUESTRIAN DEVELOPMENT ASSOCIATION

**YEDA** Topaz EWD W/T Pattern 9,10 **YEDA**

1. Walk to A  
 2. At A, jog to B  
 3. At B, extended jog to C  
 4. At C, break to a regular jog to D  
 5. At D, stop  
 6. Back 5 steps.

Walk -----  
 Extended Walk - - - - -  
 Jog - - - -  
 Extended Jog - - - -  
 Back ← ○○○○  
 Marker Ⓐ

**YEDA**  
 YOUTH EQUESTRIAN DEVELOPMENT ASSOCIATION

**YEDA** Pearl/Opal/Alumni Pattern 9 **YEDA**

1. Walk to A  
 2. At A, walk to B  
 3. At B, jog to C  
 4. At C jog a circle to the left  
 5. At close of circle, stop and back 5 steps  
 6. Jog to D  
 7. At D, stop.

Walk -----  
 Jog - - - -  
 Extended Jog - - - -  
 Back ← ○○○○  
 Marker Ⓐ

**YEDA**  
 YOUTH EQUESTRIAN DEVELOPMENT ASSOCIATION

**YEDA** Emerald/Alumni Pattern 9 **YEDA**

1. Walk to A  
 2. Walk from A to B  
 3. At B, extend jog to C  
 4. Return to regular jog and jog a circle around C  
 5. At C, lope on the right lead to D  
 6. Stop at D.

Walk -----  
 Jog - - - -  
 Extended Jog - - - -  
 Lope ————  
 Back ← ○○○○  
 Marker Ⓐ

**YEDA**  
 YOUTH EQUESTRIAN DEVELOPMENT ASSOCIATION

Ruby Pattern 9

1. Walk to A  
 2. Walk from A to B  
 3. At B, jog to C  
 4. Stop and turn 180 degrees to the left  
 5. Jog a circle around C  
 6. Stop at C and turn 180 degrees to the right  
 7. Lope on the right lead to D  
 8. Stop at D and back one horse length.

Walk -----  
 Jog - - - -  
 Extended Jog — —  
 Lope \_\_\_\_\_  
 Back ←○○○○  
 Marker (A)

YOUTH EQUESTRIAN  
**YEDA**  
 DEVELOPMENT ASSOCIATION

Sapphire/Alumni Pattern 9

1. Walk to A  
 2. Extend the jog from A to B  
 3. At B, Lope on the right lead, to C and perform a circle around C, and continue to D  
 4. At D, perform a simple lead change and continue to E  
 5. Stop at E and perform a 360 degree turn to the left.

Walk -----  
 Jog - - - -  
 Extended Jog — —  
 Lope \_\_\_\_\_  
 Back ←○○○○  
 Marker (A)

YOUTH EQUESTRIAN  
**YEDA**  
 DEVELOPMENT ASSOCIATION

Diamond Pattern 9

1. Walk to A  
 2. Extend the jog until just past B and C  
 3. Stop and perform a 1 3/4 turn to the left  
 4. Lope on the right lead around B  
 5. Perform a simple lead change halfway to C and lope around C  
 6. Break to a walk for 2 strides  
 7. Jog until even with A  
 8. Stop and back approximately one horse length and walk to exit.

Walk -----  
 Jog - - - -  
 Extended Jog — —  
 Lope \_\_\_\_\_  
 Back ←○○○○  
 Marker (A)

YOUTH EQUESTRIAN  
**YEDA**  
 DEVELOPMENT ASSOCIATION

Ranch Riding Pattern 9

1. Walk  
 2. Trot  
 3. Extended Trot  
 4. Stop, 1 1/2 spins right  
 5. Lope on the right lead  
 6. Stop, Roll back Left  
 7. Extended Lope Left Lead  
 8. Normal Lope  
 9. Change Leads, continue on right lead  
 10. Extended Trot  
 11. Stop and back.

YOUTH EQUESTRIAN  
**YEDA**  
 DEVELOPMENT ASSOCIATION

Horse name	Team	Horse color/breed	1 or 2 hands	Spurs	Description	Flying Change?
<b>Ali</b>	SOET	Bay mare	1 or 2 hand	Division appropriate Spurs	Maintain rein contact, but not super tight; give and take with leg pressure; cluck for jog, kiss for lope, setup for leads, especially right lead. She is spur-trained, but if rider isn't competent with that style, it's not needed. May want two hands with more difficult patterns or a pivot in the pattern; fine with neck rain for rail and rail-based patterns. She WILL jog vs. trot, but you need to ask for that. Check back and release with leg pressure to slow at trot. Kiss and use leg pressure and a leg/spur bump if needed to keep in lope.	Yes
<b>Boone</b>	SOET	Bay roan	1 or 2 hand	No Spurs	Can have more rein contact in divisions with no spurs; check back and release for slower jog; use voice commands along with cluck for jog, kiss for lope; maintain forward motion for flying lead change; lift reins, slight pull and squeeze for back, but release contact with verbal whoa to stop, or he will continue backing. Lift reins; use body and outside leg for turns and spins (use leg just before moving hand(s) left or right). Neck reins well, but two-hand (option) may be preferred for more difficult patterns and/or Ranch Riding.	Yes - but will build speed, so may want to choose simple for Ranch
<b>Bronson</b>	Miami		1 hand	Ball Spur Only	Finished all-around horse. Ride strong leg to soft hand.	Yes
<b>Cal</b>	PET		2 hands	Division appropriate Spurs	Set up hard for left lead	No
<b>Chauncey</b>	CEC	Bay gelding	1 or 2 hand	Division appropriate Spurs	Lazy kinda guy but very easy to ride. Littles can also carry a crop. No special buttons, just straight forward	No
<b>Derby</b>	Miami		2 hands	No Spurs	Big HUS type. Strong and steady leg to hand. Guide with leg before hand.	No
<b>George</b>	PET	Chestnut QH Gelding	1 hand	Division appropriate Spurs	Great Draw. Some Contact. Spur yield trained.	No

Horse name	Team	Horse color/breed	1 or 2 hands	Spurs	Description	Flying Change?
<b>Gizmo</b>	CEC	Bay Gelding	2 hands	Division appropriate Spurs	Lazy but smooth ride. Set up for right lead.	No
<b>Gracie</b>	Miami		2 hand option	Short ball spur option	Keep forward in front of leg; be patient in upward transitions. Can get salty if you are too demanding at the onset. Sit down with strong/steady seat. Shift hip in and lift shoulder for right lead.	No
<b>Gus</b>	PET	Haflinger Gelding	2 hands	No Spurs, Crop Option	Use your voice, medium contact.	No
<b>Invy</b>	Miami		1 or 2 hand	No Spurs	Very basic. Move off of leg and less hand for upward transitions. Keep it simple. Be aware in traffic - WILL KICK! Do not crowd in mounting area!	No
<b>Jellybean</b>	Miami		1 or 2 hand	No Spurs	Very comfortable, honest draw. Soft connection leg to hand, keep forward in right turns. Sometimes leads with his shoulder, need to keep him straight leg to hand.	No
<b>Jet</b>	SOET	Black Gelding	1 or 2 hand	Division appropriate Spurs	Light rein contact and LOTS of leg/spur. If contact is too tight, he won't move forward. Cluck & kick for jog; Kiss & cue for lope. Increase forward motion for flying lead change. Can be very lazy but does very well with a confident rider not afraid to use legs or spurs. Continue kissing and consistent leg contact through lope if he gets too slow/uncollected. Use inside leg and body position to keep him from cutting corners in rail work. Two-hand option for short/weak legs or those not allowed spurs, as his steering is very leg dependent.	Yes
<b>June</b>	Miami		1 or 2 hand	No Spurs	Honest more forward mare. Can get wiggly, use legs to keep her straight with a soft hand.	No
<b>Kandi</b>	Miami		2 hands	No Spurs	Honest as they come. Tell her what to do and she does it. Package leg to hand to keep forward.	No
<b>KC</b>	Miami		1 hand	No Spurs	Older gentleman who loves his job. Requires minimal effort to jog and will do it all day long. Young riders should be relaxed and sit tall, hold onto the reins and guide him. Their reins should be short enough that they have contact all of the time.	No

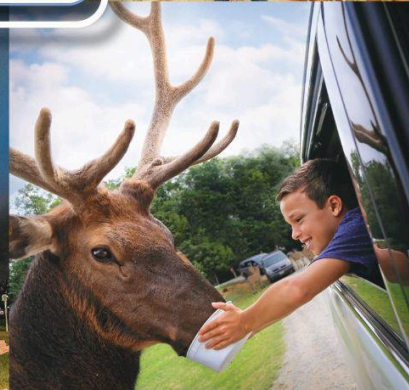
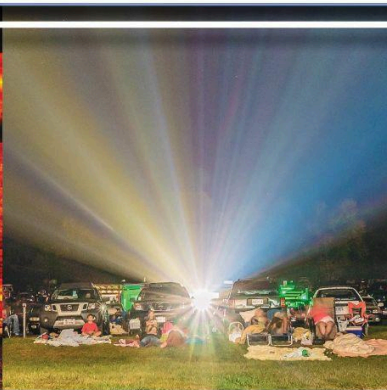
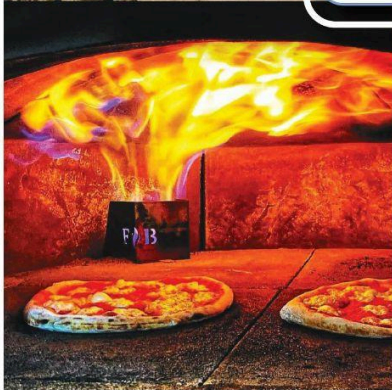
Horse name	Team	Horse color/breed	1 or 2 hands	Spurs	Description	Flying Change?
<b>Kody</b>	Miami		2 hands	Small ball spur	Ranch type horse. Needs strong leg and steady hand to keep forward and manage speed. Can trot as fast or slow as you make him.	No
<b>Larry</b>	Miami		2 hands	No Spurs	Good honest lesson horse. Keep connected leg to hand. Does not bridle up. Bouncy trot, super comfortable lope.	No
<b>Leo</b>	Miami		1 hand	No Spurs	Very broke reining horse. Use your voice and be patient and quiet in transitions. Do not override.	Yes
<b>Lola</b>	Miami	Large Pony	2 hands	Crop Option	Needs determined and persistent motivation to move forward from leg. Once going, just keep him trucking along. Keep connected leg to hand.	No
<b>Milo</b>	Miami		2 hands	No Spurs	Keep forward for lope departures. Make sure he commits to right lead. Can get sulky if rider is passive. Strong leg to soft hand. Carries head high.	No
<b>Nolan</b>	CEC	Bay gelding	1 hand	Division appropriate Spurs	Set up for your right lead. Easy to ride and has a good turn and stop. Nothing fancy but a good dude.	No
<b>Oreo</b>	Miami	Large Pony	2 hands	Crop Option	Needs determined and persistent motivation to move forward from leg. Once going, just keep him trucking along. Keep connected leg to hand.	No
<b>Pippa</b>	Miami		1 hand	No Spurs	Honest reining mare. Falls left. Manage, but do not take away forward through changes. Soft leg to hand and lighten seat through changes.	Yes
<b>Romeo</b>	Miami		1 hand	No Spurs	HUS type. Very honest. Rides best with a deep seat.	No
<b>Roxy</b>	Double M	Red roan mare	2 hands	No Spurs	Pleasure type, sensitive to leg and seat. Very smooth, fun draw!	No
<b>Scooby</b>	Miami		1 hand	No Spurs	Ranch type. Can anticipate lope departure. Be sure you stay ahead of him for correct leads. Keep him forward for turns/spins.	Yes
<b>Shamrock</b>	Double M	Red Dunn Gelding	2 hands	No Spurs	Ranch type, but can slow down. Ride with steady leg to hand contact. Can anticipate lope off when you change directions on the rail.	No

Horse name	Team	Horse color/ breed	1 or 2 hands	Spurs	Description	Flying Change?
<b>Stewie</b>	Miami		1 hand	No Spurs/ No Crop	Good natured fellow. Soft connection to hand. Ask him what to do and he'll do it. Does not bridle up or get fancy, but is an honest gentleman.	No
<b>Tater</b>	PET	Paint	2 hands	Division appropriate Spurs	Keep steady contact, use your voice.	No
<b>Tiger</b>	Miami		2 hands	No Spurs	Basic lesson horse - keep connected leg to hand. Does not bridle up. Shorter rein	No
<b>TJ</b>	CEC	Sorrel paint gelding	1 hand	Division appropriate Spurs	The best draw, he does what you tell him. Great for all maneuvers.	Yes
<b>Virgil</b>	Miami		Romel Reins	No Spurs	Little rope/ranch horse. DO NOT hand on his face! Ride relaxed from leg with a soft guiding hand. Check in and get out of his face if you want to adjust speed.	No
<b>Whiskey</b>	Miami		2 hands	No Spurs	Just a guy. Super comfortable and manageable. Needs short reins and clear directions of how fast or slow you want to go.	No
<b>Zeppelin</b>	Miami		1 or 2 hand	Division appropriate Spurs	Requires strong and steady leg to keep forward to hand. Soft connection. Do not over package.	No



# Things to Do & Places to Eat!

Thursday, June 4–Sunday, June 7,  
Virginia Horse Center



Lexington  
Buena Vista & Rockbridge County, Virginia

LexingtonVirginia.com | RockbridgeOutdoors.com | 540-463-3777



# Royalty Competition at Nationals



**Queen: High School Female**

**King: High School Male**

**Princess: Middle School Female**

**Prince: Middle School Male**

**Lil Miss: Elementary Female**

**Lil Mister: Elementary Male**

**Ambassador: EWD Female**

**Ambassador: EWD Male**

Applications & Information  
[ShowYEDA.com](http://ShowYEDA.com)



Applications Due  
**May 1st**

Questions & Information Contact  
Laura Smith (419) 957 - 9054 [LSmith@showyeda.com](mailto:LSmith@showyeda.com)



# Make Money Apply for Scholarships

The deadline to apply is April 1st.  
More information and applications  
can be found on the YEDA Website.

ShowYEDA.com



## Katie Van Slyke Equestrians with Disabilities YEDA Scholarship

Eligible to ALL YEDA Equestrians with Disabilities.  
\$2500 will be awarded in multiple scholarships.

## YEDA Founders' Leadership Senior Scholarship

The Winner receives \$1500.  
The Runner Up receives \$500.

## Ross Junior & Senior Scholarship

\$2000 for Seniors and \$1000 for Juniors.

## Lakota Of Ohio Senior Achievement Scholarship

\$1500 Senior Achievement Scholarship.

## AQHA Outstanding Youth Award

**TWO** winners will each be awarded a \$1,000 scholarship! This scholarship opportunity is open to students in **grades 9-12** who are members of both YEDA and AQHYA. YEDA youth members can receive a discounted AQHYA membership by using the code YEDA.

## Dear Future Self Scholarship

Winner receives \$500. Open to students in grades 9-12.

## NSBA Scholarship

Winner receives \$1000. Open to students in grades 9-12.



HENDERSONSWESTERNSTORE.COM

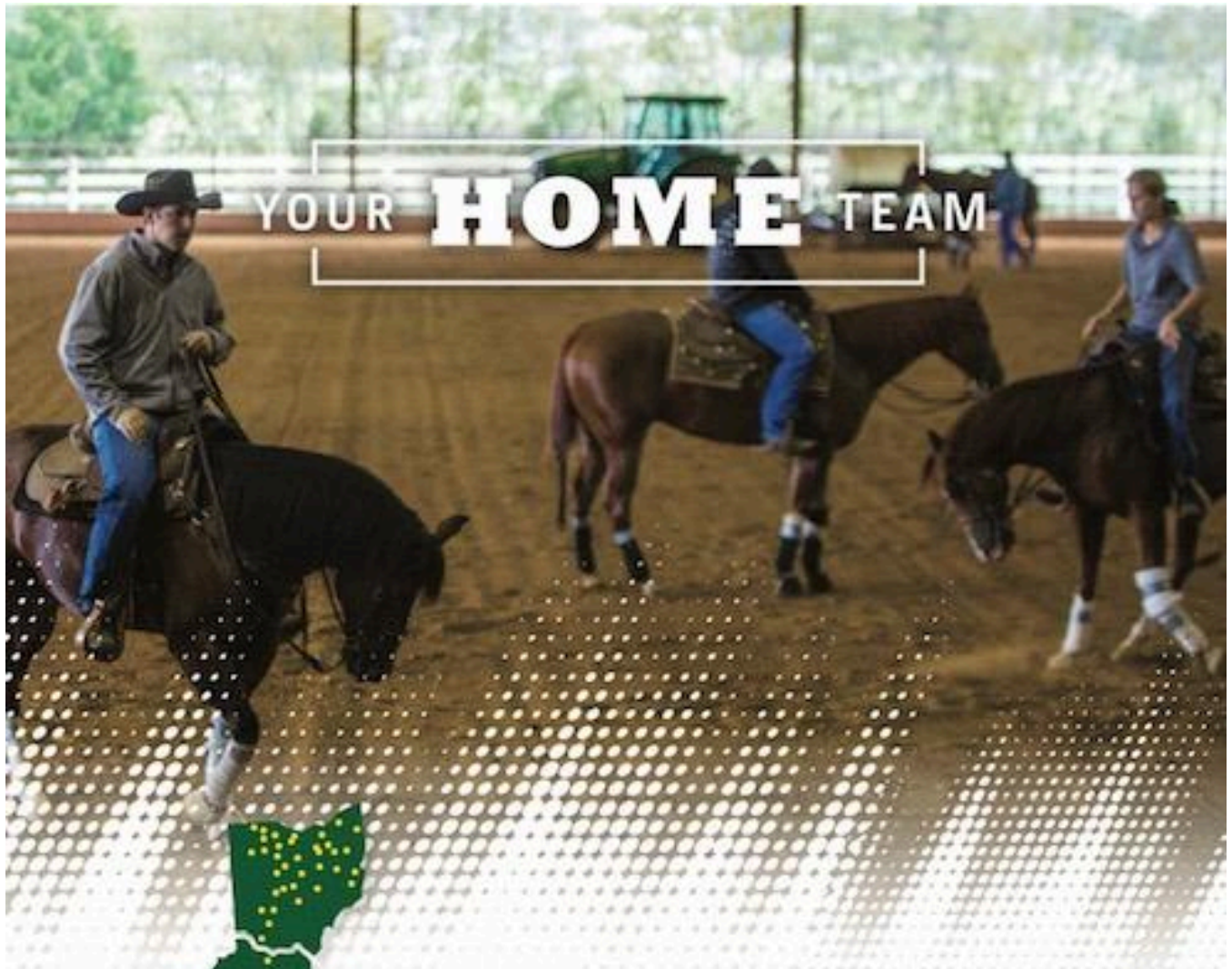
740-988-4700  
JACKSON, OHIO



**HENDERSON'S**

WE FIRMLY BELIEVE THAT ONLY THE HORSE SHOULD BE BROKE





YOUR **HOME** TEAM



80+ LOCATIONS

When it comes to caring for your land and keeping your John Deere equipments running, you need a proven team. That's Ag-Pro. Our growth continues, but we are still a small hometown dealer at heart who is proud to serve you! We're always searching for hardworking candidates to join our team. Our people are highly trained so you can expect sound advice and exceptional service from people who were born and raised here. Our team will always come through for you to help you get those projects done.



JOHN DEERE



AgProCo.com



# WE ARE AQHYA

*We are lessons that can't be taught in a classroom.  
We are teamwork, partnership and lifelong friendship.  
We are confidence and respect.*

AQHYA membership earns you an invitation to leadership events and American Quarter Horse competitions, plus unlocks thousands of scholarship dollars. In a world that is divided, we share a common bond. This is where you belong.



[aqha.com/youth](http://aqha.com/youth)

JOIN TODAY  
FOR ~~25~~  
**\$19**  
USE CODE:  
YEDA



# Shop Big Dee's!

# BIG DEE'S

TACK & VET SUPPLY

www.bigdweb.com  
800-321-2142

**Visit our Showroom!**  
in Streetsboro, Ohio

**Shop On-Line!**  
www.bigdweb.com

*The "One Stop Shop" for everything you need for your horse, your barn & yourself!*

## LARGE SELECTION OF HORSE ESSENTIALS!



**HORSE SUPPLEMENTS & HEALTH CARE**

**RIDER APPAREL**



**HORSE TACK**



**FARM & BARN**



Big Dee's is one of the largest tack and vet supply retail store in Ohio with a combined total of 300 years of knowledge and experience in canine and equestrian sports.



**SCAN TO VISIT OUR WEBSITE!**

**800.321.2142**

9440 ST RT 14, Streetsboro, Ohio 44241  
Monday - Saturday: 10AM - 5PM • Sunday: Closed



Follow us online!



**FIND  
EVERYTHING**

YOU NEED

FOR YOU AND

YOUR HORSE

**@SSTACK.COM**

**800.365.1311**

**sstack.com**

**SCHNEIDERS**  
FAMILY OWNED SINCE 1948

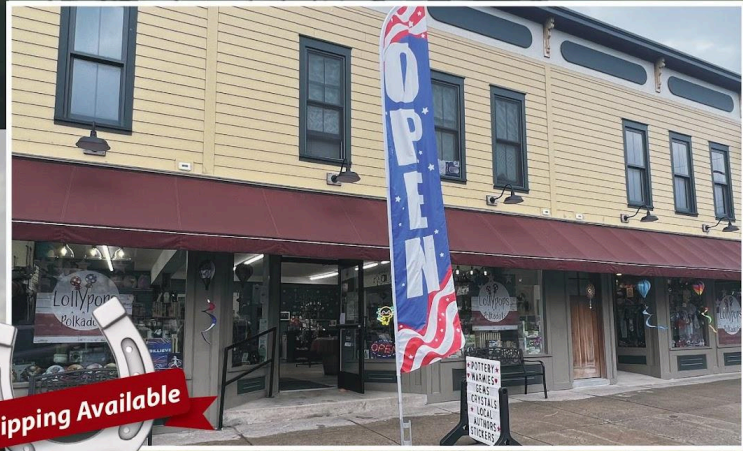
**8255 E WASHINGTON ST., CHAGRIN FALLS, OH 44023**



# Congratulations Riders!

Proud Sponsor of Elementary Pearl Classes

Discover Lollypops and Polkadots for a blend of new and gently-used kids' clothing, toys, and unique goods from local vendors—a find for every family!



Check out our Facebook page for inventory photos.



Call or Text for a personal shopping experience  
585-281-1307 • lollypopsandpolkadots@gmail.com  
S. Main Street • Marion, NY 14505

The small store with a BIG heart always happy to support Youth Equestrians.



# SCHOLARSHIP INCENTIVE FUND



YOUTH EQUESTRIAN  
**YEDA**  
DEVELOPMENT ASSOCIATION

- All **4 - 12th Grade** YEDA Riders are eligible.
- Complete the YEDA Scholarship Incentive Fund Application **EVERY** year you are showing, **especially your senior year for distribution.**
- Only points accumulated while an **active** member enrolled in the Scholarship Incentive Fun will count toward scholarship distribution.
- The rider must be a YEDA member in their **Senior year of High School** to receive a distribution.



# SCHOLARSHIP INCENTIVE FUND



- All **4 - 12th Grade** YEDA Riders are eligible.
- Complete the YEDA Scholarship Incentive Fund Application **EVERY** year you are showing, **especially your senior year for distribution.**
- Only points accumulated while an **active** member enrolled in the Scholarship Incentive Fun will count toward scholarship distribution.
- The rider must be a YEDA member in their **Senior year of High School** to receive a distribution.



# SCHOLARSHIP SPONSORS AFFILIATE & STRATEGIC SPONSORS

## SCHOLARSHIP SPONSORS

YEDA would like to thank all of the sponsors for their support of the YEDA Riders and for offering stand-alone scholarship opportunities. We ask that you support them with your patronage.

**LAKOTA  
OF OHIO**



Proudly Offering a \$1000 Senior Achievement Scholarship

AMERICAN  
QUARTER  
**HORSE**  
ASSOCIATION

Proudly Offering a \$1750 High School Scholarship



Proudly Offering a \$2000 Senior and \$1000 Junior Achievement Scholarships



Equestrians with Disabilities YEDA Scholarship  
\$2500 will be awarded in multiple Scholarships for ALL YEDA Equestrian with Disabilities Riders.



**YEDA Founders**  
Leadership Senior Scholarship  
Offering \$1500 & \$500 Scholarships

## AFFILIATE & STRATEGIC SPONSORS

YEDA would like to thank all of our partner organizations. Their support encourages youth riders to continue in equestrian opportunities through many avenues.



Updated September 7, 2025



# COLLEGE & UNIVERSITY PARTNERS

## COLLEGE PARTNERSHIP PROGRAM PARTICIPANTS

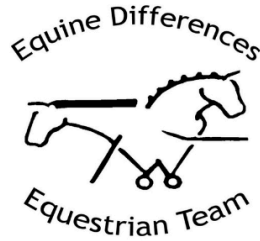
YEDA would like to thank the following colleges and universities for being a part of the YEDA College Partnership Program. They support YEDA by providing their facilities and horses for YEDA shows, providing scholarship opportunities, and introducing our riders to the next level of team riding opportunities.





# 2025-2026 TEAM SPONSORS

## Diamond Level Team Sponsors

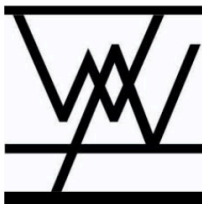


## Sapphire Team Sponsor



For more information about  
Team SIF Sponsor Packages  
Scan the QR Code.

## Emerald Team Sponsors



Updated Nov. 1 2025



# SPONSORS

YEDA would like to thank all of the sponsors for their support of the Scholarship Incentive Fund and YEDA Riders. We ask that you support them with your patronage.



Sponsor of YEDA High Point Rider Awards



Sponsor of YEDA High Point Pearl Rider Awards



Sponsor of YEDA High Point Rider Awards



Sponsor of YEDA Horse of the Day Awards



Sponsor of YEDA High Point Rider Awards



Sponsor of YEDA Best Groomed Horse Award



Updated Dec. 11, 2025