

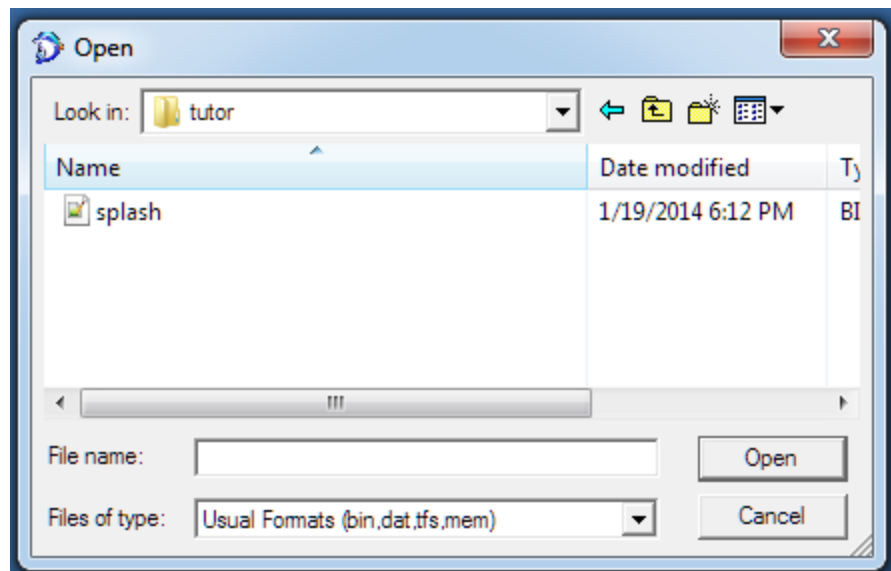
## CARA MERUBAH BOOTSPASH ANDROMAX T

### Bahan :

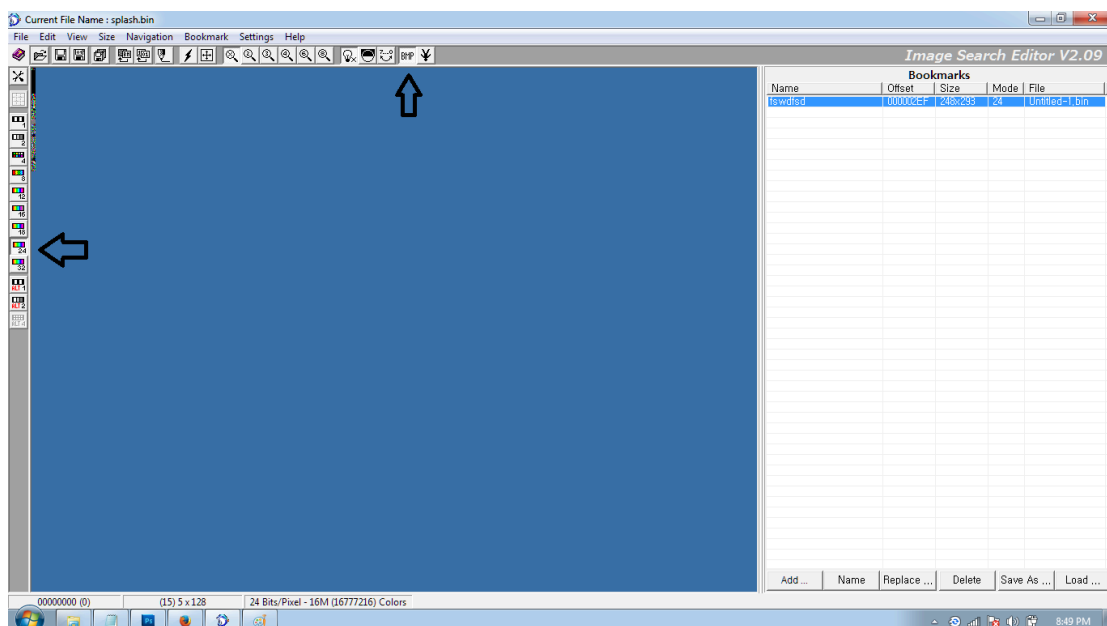
1. [Stock Splash Smartfren](#)
2. [Image search editor](#)
3. Paint bawaan Windows, Photoshop, atau Corel Draw (untuk bikin gambar)
4. Winrar
5. [Patch Splash Max T](#)

### Langkah :

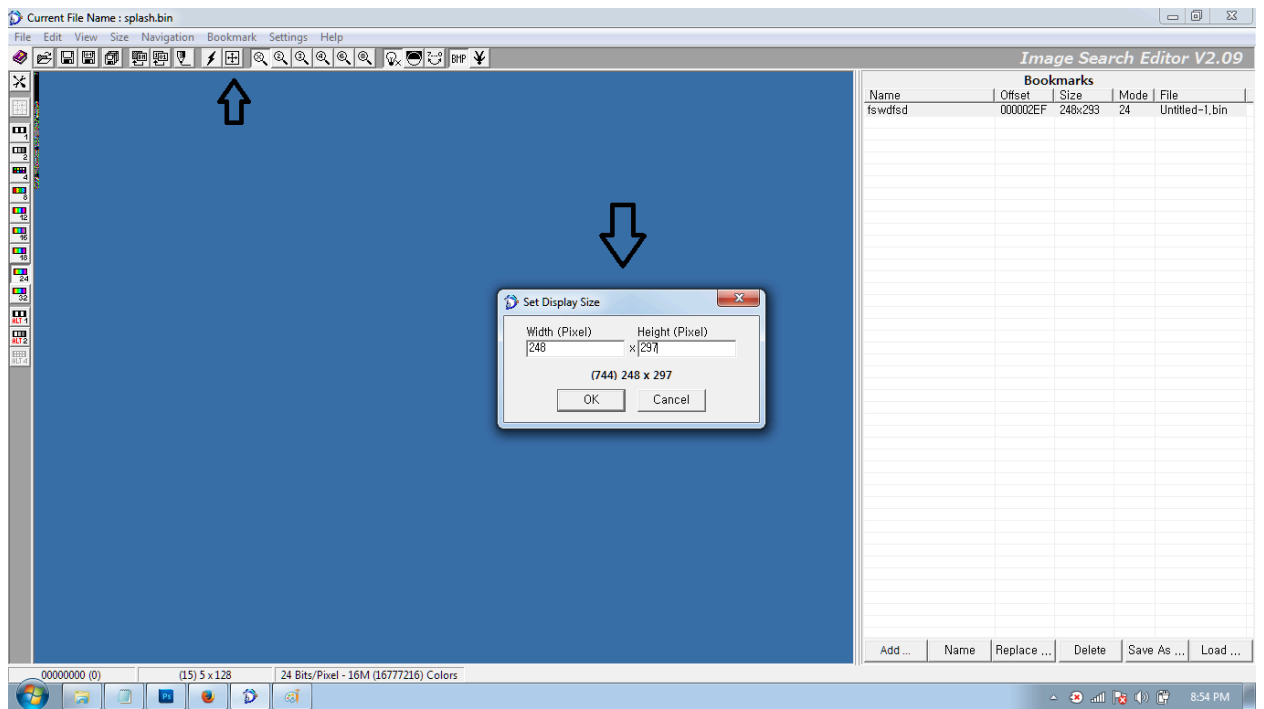
1. Download Bahan 1, 2, dan 5
2. Extract ISE.rar
3. Buka Image Search Editor.exe
4. Open Stock splash smartfren (splash.bin)



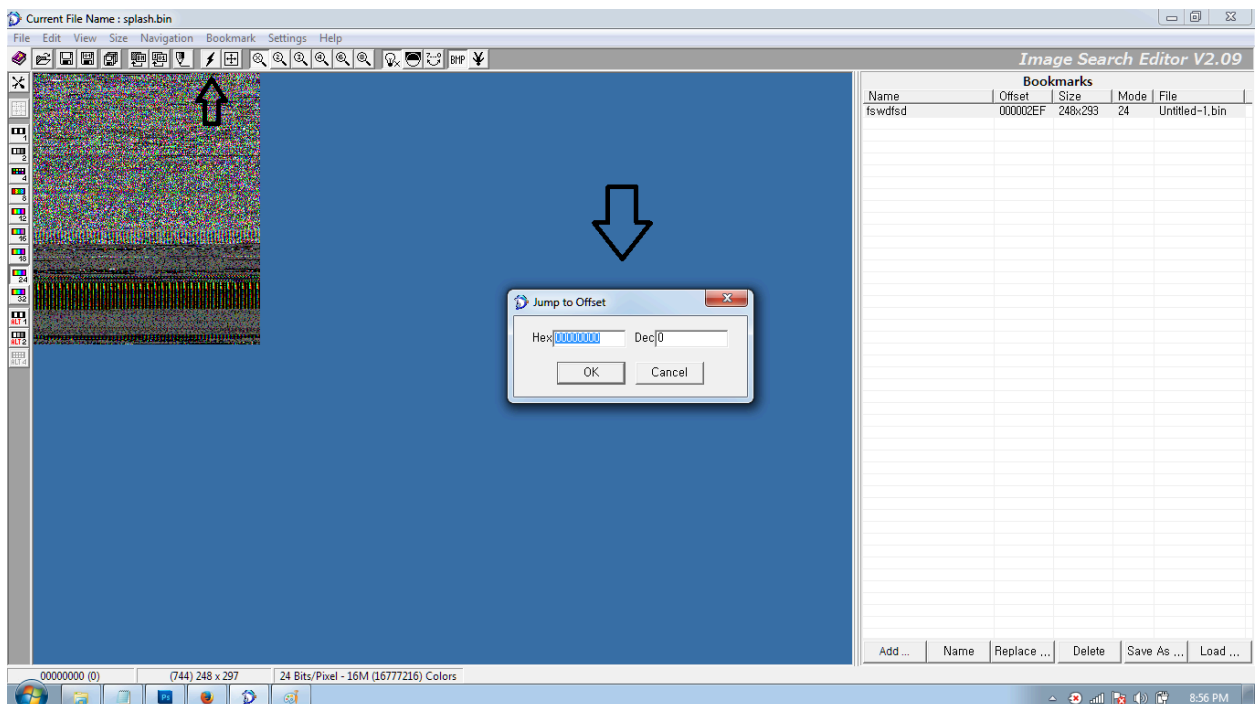
5. Set 24 Bit dan BMP



6. Set Windows Size 248 x 297



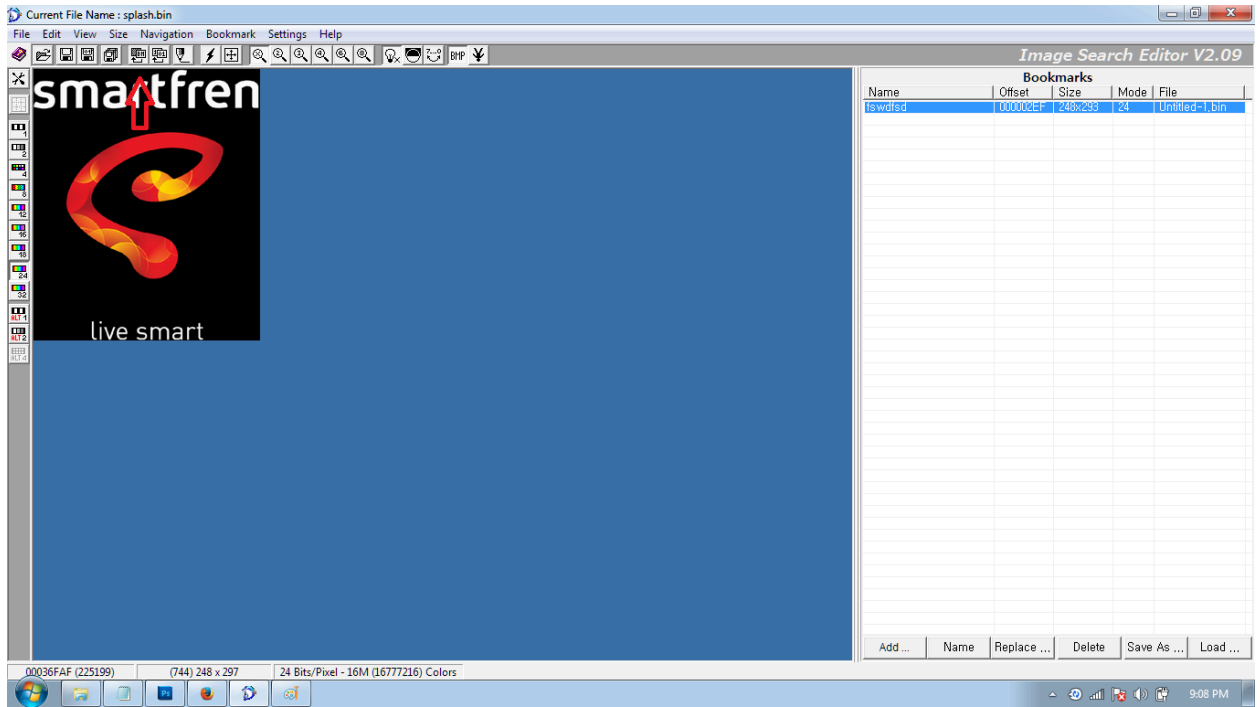
7. Jump to Offset **36FAC**



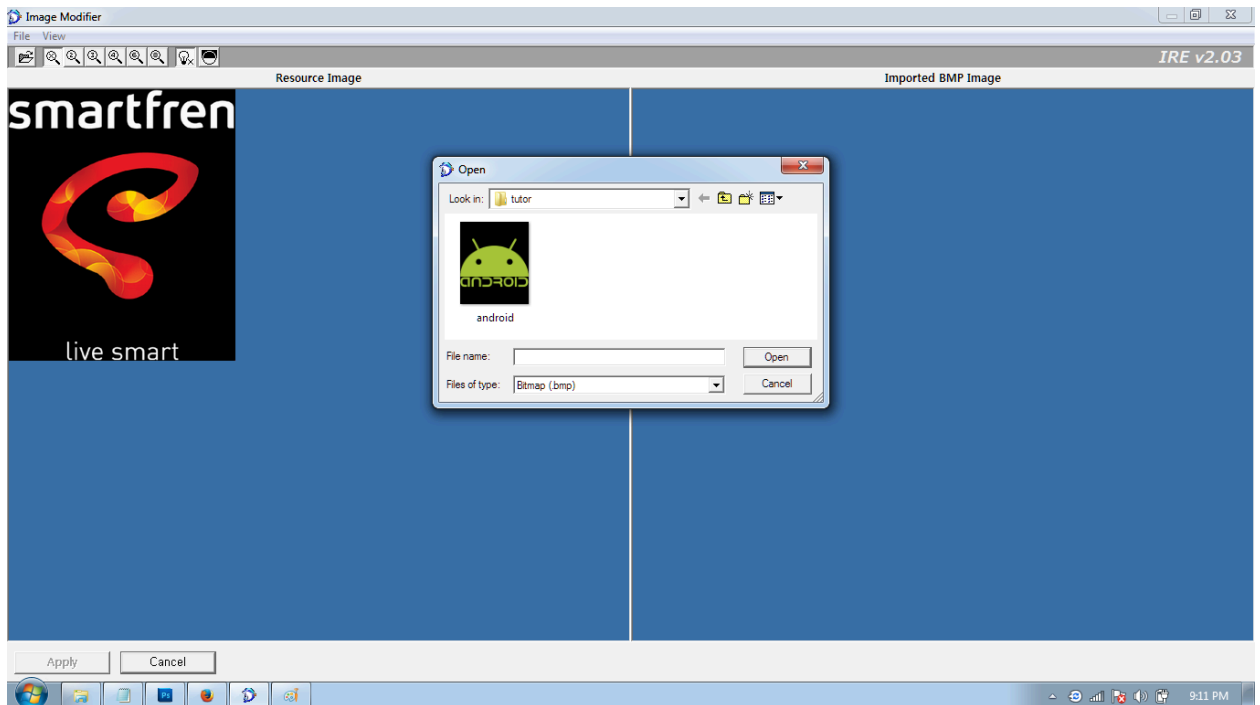
8. Klik ALT + tombol kiri

9. Buat Gambar ukuran 248 x 297 dengan format BMP di Paint, Photoshop, atau Corel Draw sesuai keinginan kita.

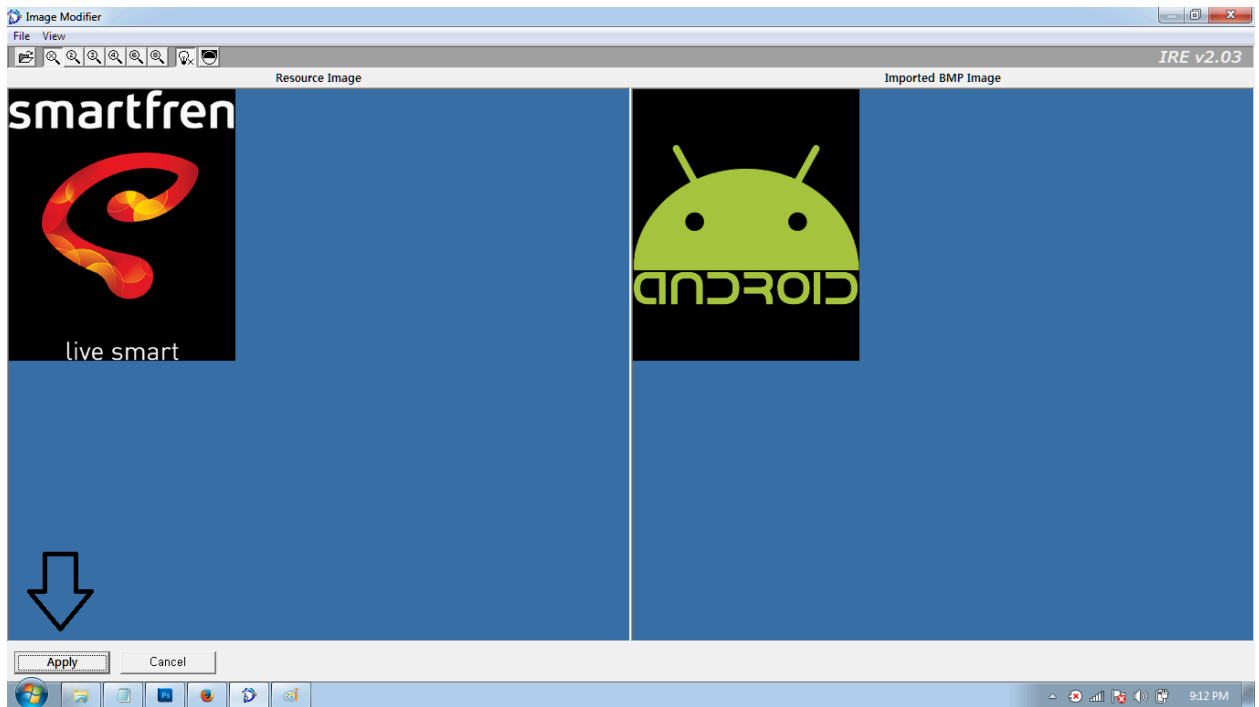
## 10. Edit BMP image



## 11. Open gambar yg sudah kita bikin tadi



## 12. Klik Apply

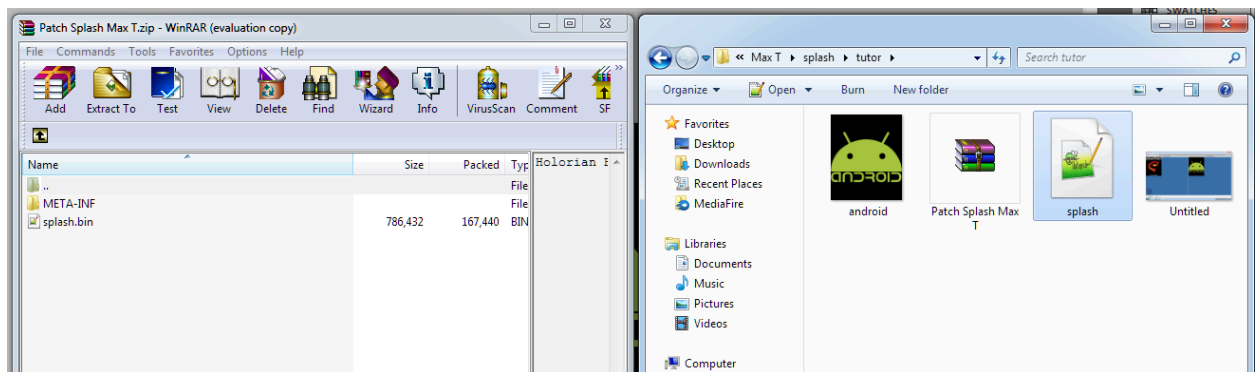


13. Bila muncul jendela Hint pilih OK

14. Close Image Search Editor

15. Buka Patch Splash Max T.rar

16. Drag Drop splash.bin yg td di edit ke dalam Patch nya



17. Copy Patch ke SDcard

## Instalasi :

1. Masuk CWM Recovery
2. Instal Patch Splash Max T
3. Reboot system

**Special credit to** Team RATJUN (Wathroni Indarto, Akem Hirwan, Gilang "Antasena", M Barjani Was'an, Vian Magnifico dan Me "Septa")