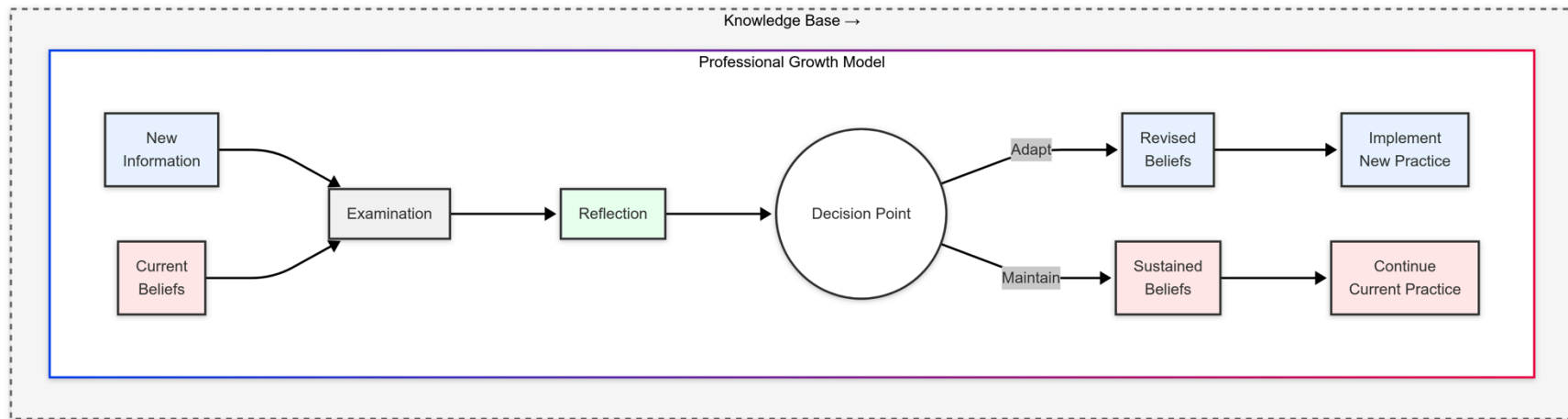


Professional Growth Model for Instructional Coaches and School Leaders



This model for professional growth can be useful for coaches to:

- Map where their clients are in the process
- Identify where someone might be stuck
- Examine their own biases when a client is struggling
- Guide conversations about resistance vs. growth
- Help normalize the challenge of professional change

How might you use this in your work? Write out a preliminary plan below to support continuous improvement.