

Intro

How to check if it's already open

How to open it

Intro

-FAF needs port 6112 TCP and 6112 UDP to be open in order to run without connection issues.

-This guide will tell you how to do this in a few quick and easy steps.

-This should take ~~10 to 15 minutes, depending on your IQ.

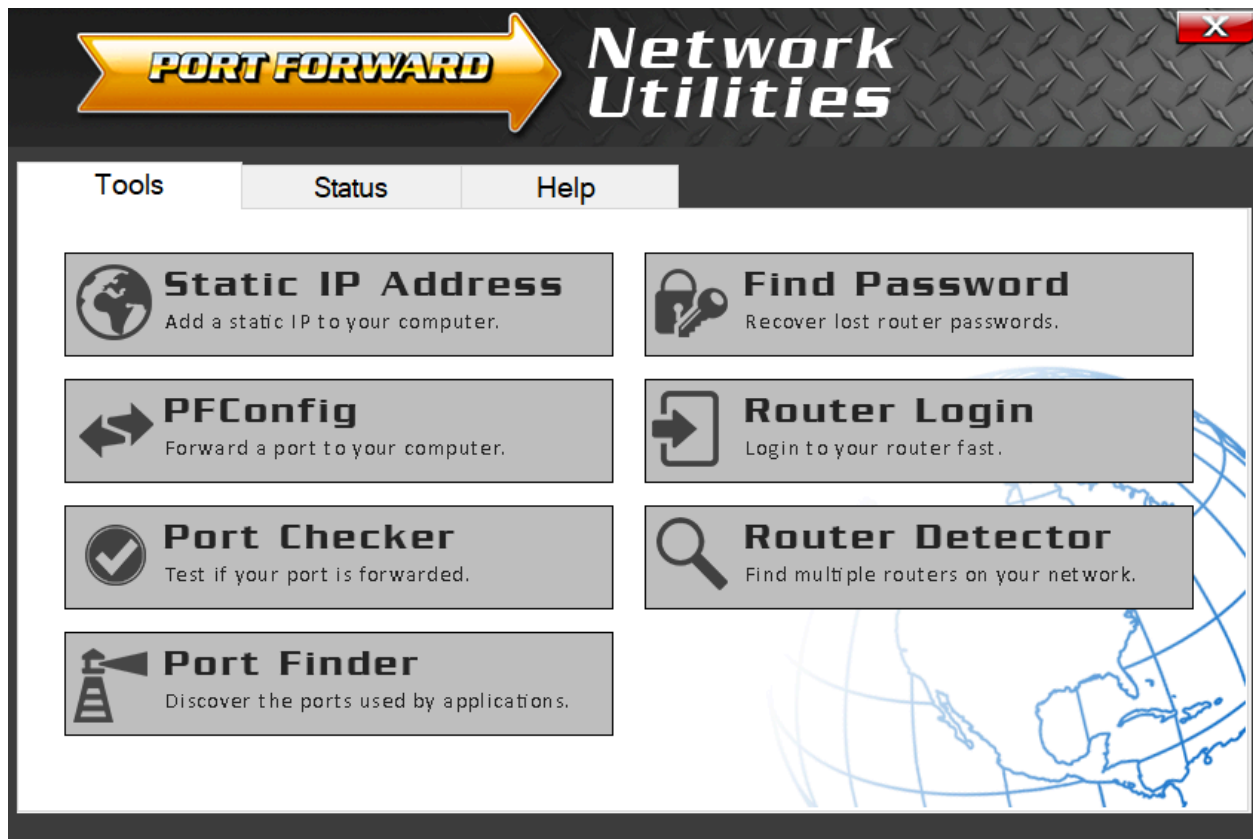
How to check if it's already open

You need to check if the port is open or closed.

I use this one. Trial only, don't pay for it.

<https://portforward.com/software/download-instructions/network-utilities/>

It brings up this screen,



Press Port Checker. It brings up this screen,

Instructions
Enter the port number to check, choose your protocol, and click the Check Me button.

Windows Firewall
Make sure you allow any firewall popup messages that you get while doing the port check.

IP Address
There is no need to specify the IP address to test. We will automatically test all IP addresses on this computer.

Firewall Logs
Check your firewall logs for our server's IP address:
65.112.29.37

Port Number To Check:

Protocol: TCP UDP

[Check Me](#)

Notes
TCP testing can detect if a TCP port is forwarded to either this computer or another device on the network like a DVR or an IP camera.
UDP testing only works if a UDP port is forwarded to this computer. You can not test UDP forwards to other devices.

External IP Address:

Port Check Result:

100 Gbps \$0.12/Mbps - IP Transit For Your Network
Global Internet Backbone 21,000+ BGP sessions, 7200+ networks, 185+ IXPs Join Us
he.net [OPEN](#)

[Open Port Check Tool Help](#)

Type in 6112, press Check Me for TCP and UDP. If it says this, you're fine,

The screenshot shows the PortChecker application window. At the top, it says "PFPortChecker by Portforward.com version 2.0.2". The interface is divided into several sections:

- Instructions:** Enter the port number to check, choose your protocol, and click the Check Me button.
- Windows Firewall:** Make sure you allow any firewall popup messages that you get while doing the port check.
- IP Address:** There is no need to specify the IP address to test. We will automatically test all IP addresses on this computer.
- Firewall Logs:** Check your firewall logs for our server's IP address. **65.112.29.37**

The main area contains the following information:

- Port Number To Check:** 6112
- Protocol:** TCP UDP
- Check Me** button
- Notes:** TCP testing can detect if a TCP port is forwarded to either this computer or another device on the network like a DVR or an IP camera. UDP testing only works if a UDP port is forwarded to this computer. You can not test UDP forwards to other devices.
- External IP Address:** Your external IP address is: 141.0.157.238
- Port Check Result:** Your port is OPEN on this computer!
- Explanation:** This means that our server was able to establish a direct connection to your computer and send it data. Everything is working as it should and your TCP port is forwarded correctly.

At the bottom, there is an advertisement for "100 Gbps \$0.12/Mbps - IP Transit For Your Network" with an "OPEN" button. Below the ad is a section titled "Open Port Check Tool Help".

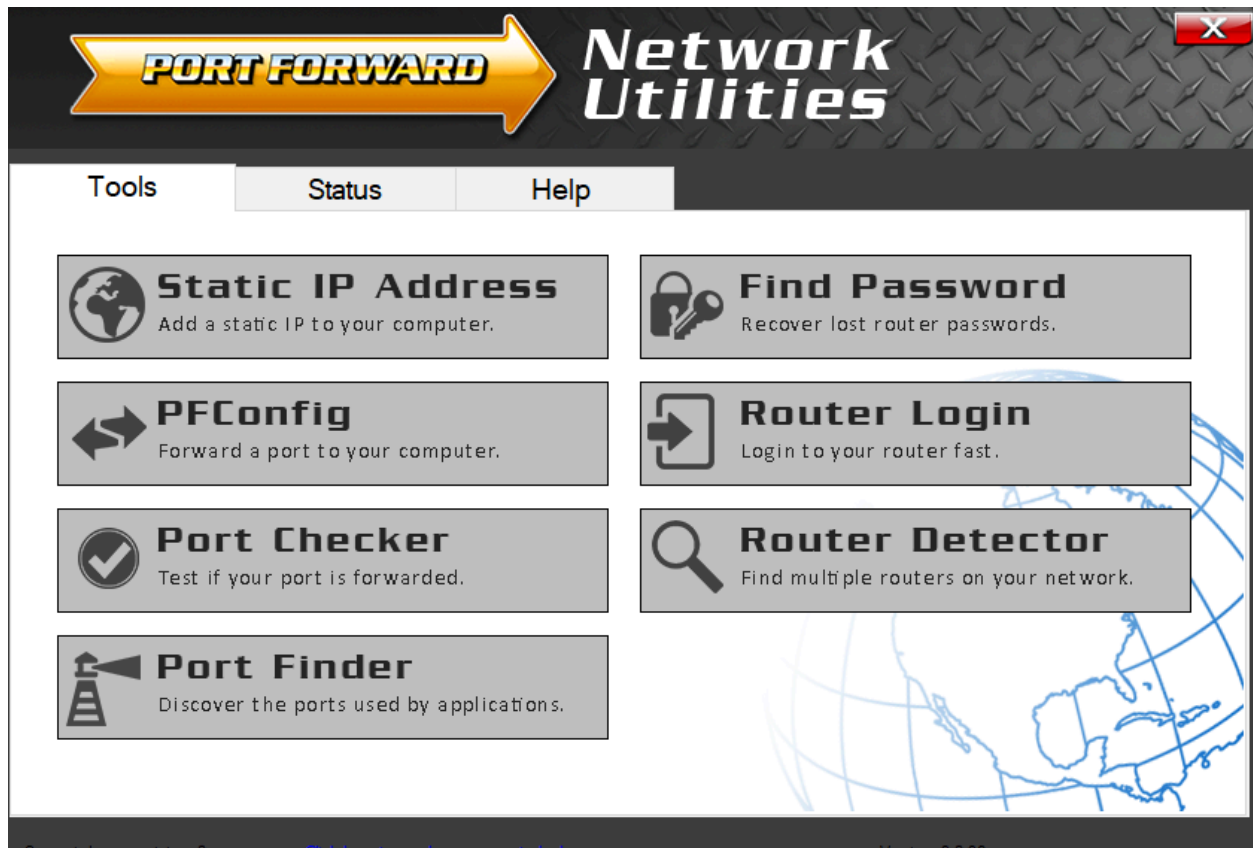
If it doesn't, you're going to have to open your port.

How to open it

The easiest thing to do by far is e-mail your internet provider (ISP) and say to them “I need port 6112 opening on TCP and UDP”.

After they say they’ve done it, check if it’s open. If it isn’t, tell them to fuck themselves and do it yourself. Ahem, this is how to open it,

- Set a Static IP. Sounds complicated, it’s not. It just involves using those tools you downloaded earlier to set a Static IP. Click the big Static IP Address button below.



A screen will come up. Set it to whatever you want, e.g. 192.168.1.23. Your internet will go out for a few seconds then come back. Now you can forward your port.

Open CMD, type ipconfig/all, press enter. Something will come up that says Default Gateway. It’ll look like 192.168.0.1 or something similar. Put that in the top bar of your browser, press enter. An admin screen will come up.

Find out what the login details for your router are (either they’ll be on the router, or Google the default ones).

Somewhere in the router settings it will say Port Forwarding. Forward the port 6112 (if it says port range just do 6112 - 6112) for TCP and UDP. Set the IP address if it asks for one to the Static IP address you set earlier. Press 'Apply' (if it's there).

Test the ports on the port checker to see if it's open. Congratulations, your ports are now open.