



Community Frequently Asked Questions Bond 2020 - updated 12.16.22

New questions and responses will be added and updated periodically

Table of Contents

Table of Contents	
FAQ Topic Shortcuts	
Bond 2023	<u>Supplemental Bond 2023 Overall Questions</u>
Bond 2020	<u>Overall Bond Questions</u>
	<u>Grade Realignment</u>
	<u>Proposed Community Center</u>
	<u>Technology Upgrades/Adjustments</u>
	<u>Safety/Security Upgrades</u>
Curriculum	Extended Learning (Spring/Summer Opportunities)
Curriculum	Virtual Learning(Fall 2021 - TBD)
Other	<u>Other</u>

Frequently Asked Questions

Overall Bond 2020 Questions

Q1. What is the Caledonia Community Schools (CCS) Bond Program?

- A. The Caledonia Community Schools Bond Program will allow CCS to invest in much-needed security and safety enhancements and repairs to update aging buildings so our kids can learn in a safe environment. CCS has a proven track record of success inside and outside the classroom and this program will allow us to build on our proud tradition of excellence and keep Caledonia an attractive place to raise a family. The Caledonia Community School Bond Program is a fiscally responsible program that will allow CCS to repair and invest in our schools and facilities without increasing existing property taxes.

Q2. What impact will the bond program have on student safety and health?

- A. The school bond will allow CCS to invest in much-needed security and safety enhancements and repairs to update aging buildings so our kids can learn in a safe environment. The safety and health of our students, staff, and community is our number one priority. Additional security enhancements – including cameras and high-tech video monitoring equipment – at all buildings and facilities are needed to help keep our students, staff, and community safe before, during, and after school.

Q3. What impact will the bond program have on student learning?

- A. The CCS school bond program will help provide the latest technology to complement our strong career and technical education programs to prepare students for college and careers. The CCS school bond program will help provide upgrades that allow students to gain skills, real-world on-the-job experience, and compete for jobs whether in the skilled trades, agriculture, or high-tech computer science fields. Supporting our award-winning arts, band, and music programs with new equipment and upgrades will contribute to more well-rounded students.

Q4. What are some of the improvements and projects for school buildings being proposed as part of the school bond program?

- A. The CCS Bond Program is necessary for the district to keep pace with needed repairs and improvements to school safety and make all of our buildings as safe and healthy as possible. All of our school buildings will receive repairs and upgrades and the bond will also replace the 64-year old Dutton Elementary with a neighborhood school in a new location better suited for serving elementary students and their families. The future location of a new Dutton Elementary is not finalized and we would work with the community to find the best location that serves our students and their families.

Q5. What other new facilities are being proposed as part of the school bond program?

- A. Athletics, performing arts and continuing education bring our whole community together and the bond will allow us to create a new community center with a swimming pool and multi-use gymnasium. The new community center will bring students, families, and seniors together and encourage healthy lifestyles and ongoing learning. The swimming pool will provide a new asset for our community and

will be available to our whole community and students that currently have to use facilities far outside our district in order to practice and compete.

Q6. How will CCS be held accountable regarding the Bond Program?

- A. Both of these programs are fiscally responsible and will allow us to invest in our schools without increasing existing property taxes. CCS has a proven track record of fiscal responsibility and transparency. If this program passes, every dollar spent will be tracked and available on a public website to ensure taxpayer dollars are spent wisely. CCS has received a clean financial audit for over 20 years and has an AA bond rating from Standard & Poor's.

Q7. Why do we need a change at the football stadium?

- A. Athletics, performing arts, and continuing education bring our whole community together. While the primary focus of the school bond is on investing in much-needed repairs and improvements to aging buildings so kids can learn in a safe environment, we must also anticipate the future needs of a growing district. There are several challenges that a new football stadium would address, and though it's not an immediate priority we'll work with the community in the coming years to build a facility that works for Caledonia.

Q8. Will construction workers have background checks done?

- A. Yes. The district is providing and maintaining the list of background checks on all contract and subcontract employees.

Q9. Will construction workers have daily check-in COVID tests (temp, symptom, and such)?

- A. Yes

Q10. Has the district considered sending out a survey to all CCS parents and residents to get feedback on how to proceed with the bond given the current escalation in prices? Can we use PowerSchool to send out a survey?

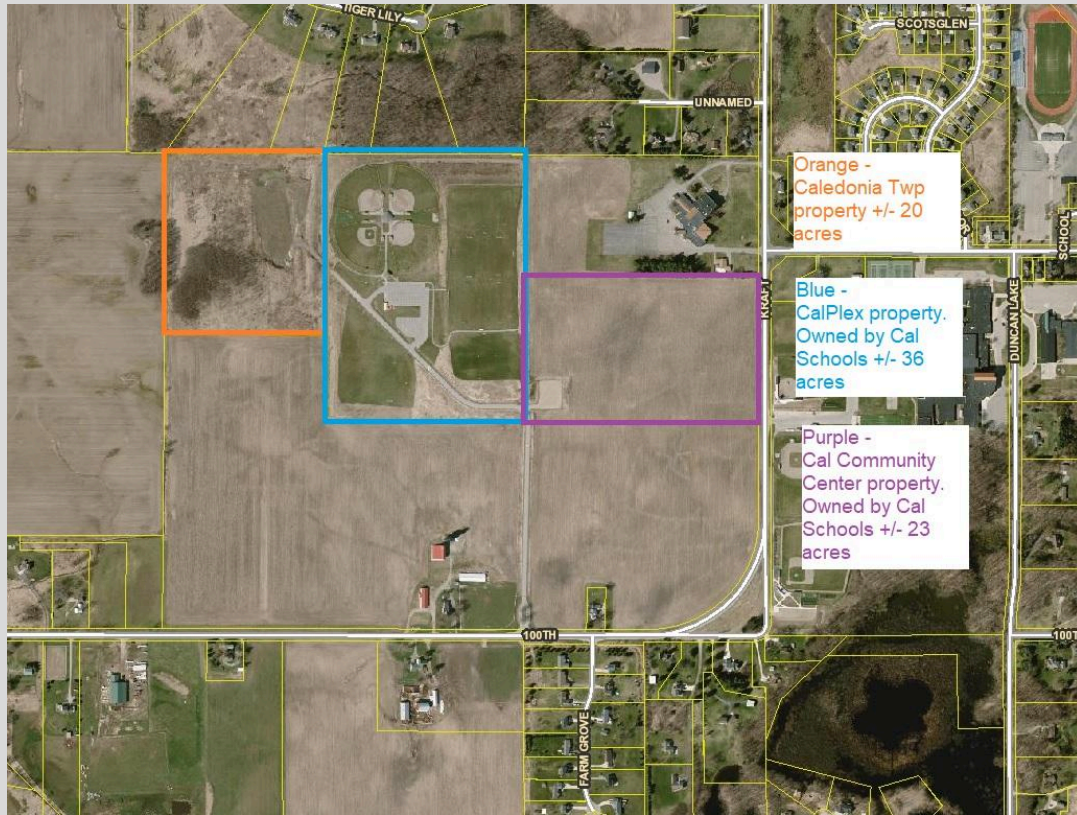
- A. Yes, the district has considered the idea of surveying the community, however, if the Board of Education(BOE) decides to go for a bond this spring, that decision needs to occur within the next few days and does not provide the time necessary to conduct a quality survey like what was done during the 2020 bond proposal. We can do a survey through PowerSchool; however, that only provides information from our parents, which will miss senior citizens, homeschool/private school parents, and others in our community who are eligible voters and could give misleading information. If the BOE decides that we will go for a bond, the possibility of gaining more clarity from surveys/forums, etc. are still a possibility.

Q11. Will we be selling Calplex to help offset the costs of projects going over budget along with other land the district owns?

- A. At the September Special Board Meeting, the CCS Board of Education looked at the possibility of selling the Calplex *as one of the many options* as a way to find extra funding to complete all the priority projects left on the bond and still build Dutton Elementary. After lots of discussion, the CCS Board of Education decided to move forward with finishing the list of projects remaining and place a

supplemental bond issue on the ballot for a NEW Dutton Elementary. There was no need to sell the Calplex property owned by CCS.

Adjacent to Calplex is additional property owned by the township. CCS is looking into the possibility of developing this land as part of the supplemental bond to extend the Calplex Complex. The district plans to reach out to the Township to seek an in-kind donation to develop Phase II of Calplex.



[Back to Top](#)

Grade Realignment

Q1. Can you explain why Kraft is being used as the 5th and 6th grade building instead of the 7th and 8th grades? It seems that it would be more beneficial to have 7th and 8th grade at Kraft Meadow.

- A. Given that Ducan Lake was once a high school, this facility has many of the athletic and fine arts amenities that Kraft does not have. As such, historically both middle school programs have operated all official athletic and fine arts events out of DLMS for both buildings. To upgrade Kraft to the point where it would be as suitable as DLMS would have required the district to significantly increase the cost and scope of the bond project.

Q2. What will be the start/end times for the 5/6 and 7/8 buildings?

- A. Beginning this fall, Kraft Meadows Middle School will now be known as Kraft Meadows Intermediate School and will follow the secondary start and end times. The specific start and end times have not been finalized but will be shared later this spring.

Q3. Through the relocation of the Central Office, will there be additional space for ECC programming and other district needs?

- A. While the exact timing has not been finalized yet, we believe that the new administration offices may be ready for occupancy very close to the start of the upcoming school year. Our priority is to complete construction at the middle schools first in order to accommodate the larger number of students that each building will house next fall. Planning for future expansion of the Early Childhood Center will not begin until after the administration offices are completely vacated.

Q4. Now that 5th grade has moved out of the elementary buildings, when will our 4th graders be able to visit their new buildings. How is this process going to work?

- A. At this time we plan to open up both Kraft Meadows Intermediate School and Duncan Lake Middle School in May to allow families to come in for in-person open house opportunities. *Dates and format of these events are subject to change based on COVID-19 restrictions. Specific information will be released as we get closer to these events.

Q5. How are we helping students transition a year earlier than what they normally do?

- A. We have had a long history of transitioning our kids from an elementary setting to a secondary building. Our staff is well prepared to transition kids and prepare them not only academically, but emotionally to handle what will happen in the next year. We also will welcome kids in the building this spring to get them acclimated to learning in a new building.

[Back to Top](#)

Cal Community Center

Q1. Will the Cal Community Center(CCC) be LEED certified?

- A. Current building codes have been moving closer and closer to the LEED standards over the years. Subsequently, contractors feel that we will be able to create similar efficiencies through the design and building process without spending the additional costs associated with LEED certification.

Q2. Is there an estimated or hopeful time of completion for the Cal Community Center(CCC) yet?

- A. The current projected completion date is set for late 2024.

Q3. Caledonia has an advanced non-motorized transportation plan. How will students safely walk from the rest of the campus, without impeding the flow of vehicle traffic, to the proposed athletic complex?

- A. There are no current plans to use the new Cal Community Center during school hours for educational purposes, so there will not be a need for students to have walking access to the community center. Most students and families will come to the community center before or after school and would access the building with vehicles.

Q4. Does the pool have a bulkhead? Can diving and swimming occur at the same time?

A. There is not a bulkhead planned for the competition pool. Swimming and diving will need to be scheduled separately or lane closures can be used as well.

Q5. Was there consideration for the pool to be 50 meters like most other new school district pools?

A. There was some discussion regarding the length and size of the pool. Through our look into this issue, we found that most high schools do not have 50 meter pools and our pool as designed will meet or exceed all requirements for a high school competition. Additionally, the added expense of creating a pool of this size would have required significant reductions or complete elimination of other aspects of the facility that were identified as high value to other community groups.

Q6. Is the 200 seating capacity for the pool enough to host Age Group meets, etc?

A. This capacity should accommodate what we need for most events. Options are available to live stream events to additional seating areas within the community center. This gives flexibility to open up more areas for viewing if needed.

Q7. Is there a plan for a Water Polo team?

A. Currently, CCS does not have a water polo team and most schools only offer this as a club sport, so our new community center was not designed with this in mind. Potential future expansion could allow for a deeper pool if interest in our district evolves. This pool is designed for a wide variety of other uses.

Q8. Why aren't we collaborating with Davenport to help offset the cost of a competition pool that they could rent out from us?

A. We have been in contact with Davenport University and they are not prepared to invest in the facility at this time. We do understand that there are potential revenue possibilities associated with holding regular large swim meets, however, these potential revenues do not offset the operational costs of owning and operating the pool throughout the year. Such venues as the Holland Aquatic Center are well known for hosting local, state, collegiate and national events and still must utilize an additional tax millage to help support the expenses a larger pool requires. Based on past history and our polling information, our community does not appear to be ready to support an additional or increased tax at this time. Additionally, the school district is not in the position to pick up the additional cost of operations beyond what pool programs generally generate as indicated with the example of the Holland Aquatic Center.

Q9. Why do we have both a leisure pool and a competition pool?

A. Leading up to the bond proposal and millage renewal in May 2020, CCS conducted focus groups and polling to better understand resident and voter perception. These helped guide what the district felt were important areas of focus for the bond campaign. In general, the community center was considered to be a potentially polarizing issue during the bond campaign but gained more support if it was more accessible by our community. Thanks to the support of our community, the bond passed allowing us to create a new community center that will serve a variety of groups within our community.

The community center design provides not only a high school competition-size pool that meets the state and national guidelines but also a separate leisure pool to attract children, families, and senior citizens within our community. Knowing there were previous bond failures when a pool was included,

the district felt the current design was the most appropriate first step to take if we had a realistic shot of passing this bond. We did specifically design the community center so that expansion could be possible in the future if the interest is strong enough to support an additional tax millage of some kind.

Q10. Has the district explored the option of having a separate diving well or increasing the size of the pool to accommodate for a future water polo team?

A. The district has explored this option and below you will find some approximate cost increases we obtained from our consultants that will be shared with our Board's Finance & Operations Committee. They will be reviewing the following costing considerations:

- a. Increase pool from 60' x 75' to an 82' x 75' (no water polo): \$1.9M - \$2.1M increase
- b. Add separate diving well (1,500 s.f.) to 60' x 75': \$1.7M - \$1.9M increase
- c. Design pool for water polo, add 1,500 s.f. of pool and deck: \$750K - \$900K increase
- d. Operational costs annual increase ranges: \$25K to \$50K per/yr incr
- e. Depending on the configuration, additional 6-8 months of design/pre-construction would occur
- f. Commencement of construction would be summer 2022, completion late 2024
- g. Based on an increase of design and extension of time, an additional \$200K-\$300K of Architectural, Engineering, and Construction Manager costs would need to be allocated for requested changes.

Q11. Is a sauna and whirlpool in the plans for muscle therapy?

A. We are not planning a sauna room, however, there is a whirlpool and other therapy accommodations planned.

Q12. Will there be enough parking to accommodate multiple events at the same time?

A. Currently, parking does exist on the CalPlex facility and a parking lot sufficient for 150 cars will be added to the site near the community center. Given this additional parking, we feel that parking should be sufficient and the district will still have plenty of land space should the need for more parking down the road become necessary.

Q13. If we have two tracks, how will we split up who uses which track? (IE: MS at new one, CHS at existing)

A. The goal is to have just one track and we would like to have that track located next to the new facility so that it is more accessible for everyone in the community as well as serve both the MS and HS programs. However, we will wait until later in the bond project for a final determination.

Q14. Was the Cal Community Center (CCC) project canceled?

A. No. The possibility of canceling the Cal Community Center (CCC) was brought up during the special Board of Education (BOE) meeting as an idea to consider; however, no formal decision or consensus was determined. The big concern discussed by the BOE was that if CCC was canceled, the district would lose \$10 million or more (approximately 11%) of the overall \$88 million dollar bond that would not be refundable. Not only would there be a large loss of already expended bond dollars, but also the district would not be able to cancel the CCC without getting approval from the Department of Treasury since the Cal Community Center was included in the application approved by the Department of Treasury and in the voter-approved ballot language.

Q15. When will we break ground on the Cal Community Center (CCC)?

- A. Construction of the Cal Community Center will be starting soon. After gaining official approval to begin, we expected to get started moving dirt by October 4th. However, some additional concerns were brought up from the Township that the bond team is working through.

Q16. Will the Cal Community Center (CCC) have a pool for the high school swim team and separate diving well?

- A. The high school competition pool design will have an integrated diving well.

Q17. What happens if we cancel the Cal Community Center(CCC) project? Can those funds be used to complete the New Dutton Elementary?

- A. The question was raised during the special Board of Education (BOE) meeting regarding the cancellation of the Cal Community Center. If the district were to cancel the project, we would lose \$10 million or more (approximately 11%) of the overall \$88 million dollar bond and that amount would not be refundable. Not only would there be a large loss of already expended bond dollars, but also the district would not be able to cancel the CCC without getting approval from the Department of Treasury since the Cal Community Center was included in the application approved by the Department of Treasury and in the voter-approved ballot language.

Q18. What is the plan with bond funds for athletics?

- A. Currently, athletics are on the list of remaining items to be completed. These projects include the turf, an expanded weight room/training facility and other items.

Q19. Why can our youth athletic teams no longer use the Varsity Field?

- A. All of the youth programs use the Varsity Football Field free of charge. Historically, as the seasons progressed, use of the Varsity Field becomes limited to preserve field conditions that could deteriorate quickly with extensive field usage. The weather could also add to the challenges of keeping the field in good condition for varsity competition. Recently our operations department worked with our athletics department to get additional lines painted on Scotland Yard to allow our youth football teams to play at an alternate location to preserve the Varsity Field for the remainder of the season at no cost to the Youth Athletic football program. The 7th/8th grade Youth Football program has also been in contact with Davenport to offer additional field options for their teams.

[Back to Top](#)

Technology Upgrades/Adjustments

Q. TBD

A.

[Back to Top](#)

Safety/Security Upgrades

Q. TBD

A.

[Back to Top](#)

Extended Learning

Q1. How will students be grouped for extended Learning Classes?

A. Students will be grouped according to age and/or grade level. Grouping students in this structure allows them to build self-confidence and provides the teacher with the ability to maximize learning potential.

Q2. What type of instruction will be delivered? Online Program or Teacher Facilitated?

A. K-12 instruction will be a combination of both modalities depending on the needs of the student. More online options in the high school than at the lower levels.

Q3. Is this just for credit recovery or can my high schooler participate for accelerated instruction?

A. Extended learning for high school students will focus on credit recovery only.

Q4. Do the kids have to attend every day? What if we have a scheduled vacation?

A. Students participating in extended learning opportunities will be expected to participate during their scheduled times. The teaching staff will certainly work around scheduled vacations.

Q5. Will the building be air-conditioned?

A. Yes.

Q6. Do we still need to fill out the health questionnaire every day?

A. Yes. This will be part of the daily routine for students.

Q7. Will, there be a health nurse on-site?

A. No.

Q8. Will the doors be locked for safety? Will teachers know where to lead students in an emergency situation (unfamiliar with the building)?

A. Yes. As always, our buildings are locked for safety. Teachers will understand emergency procedures and will lead students, as needed.

[Back to Top](#)

Virtual Learning

Q. TBD

A.

[Back to Top](#)

Other

Q1. How were the boundary zones determined?

- A. During the 2020-2021 academic year, the district began transitioning to a building placement system based on geographic boundaries for each elementary school. Each home address in the district was assigned an attendance zone with a designated elementary building serving those residences. We are now entering year two of this transition. Periodically we'll review demographic shifts and redo our boundary zones as necessary.

Q2. Will current elementary students be forced to move to another building?

- A. They will be "grandfathered" in at their current school. However, if the building is located outside the family's attendance zone, parents will be responsible for transportation to and from school. Parents must apply for an In-District Transfer if they want to transfer their student.

Q3. How will bus stops be determined for split family situations?

- A. The primary custodial parent residence will determine the school boundary assignment. If there is a split custodial arrangement, an in-boundary bus stop will need to be maintained. Families will need to work with Transportation to share arrangements for student pickup and drop-off.

Q4. Why does Caledonia Community Schools not transport students to childcare facilities outside the elementary boundary area?

- A. In January 2020, Caledonia Community schools began the transition to a transportation system based on geographic boundaries for each elementary school. The vast majority of school systems nationwide rely on this mode of transportation in districts with multiple buildings at the same grade level. As a district, we saw the opportunity to make our process more efficient and reduce the amount of time students are ultimately on the bus. It's important we remain financially responsible while at the same time focus on the emotional well-being of all our students. If we open the prospect of service for one, two, or three large or popular childcare centers outside of their home elementary boundary - we must open the service to all State licensed childcare providers in the district, which returns us to an inefficient transportation process.

[Back to Top](#)