

What is it: Looking for an entry vs the close of the high volume day. Treat stop on an EOD basis or -2-5% from entry.

Criteria:

- Highest volume ever, in a year, or since IPO day
- Closing Range > 50% on volume day
- Best if there is follow on follow through volume within a couple of days after the HVC

Reasoning: Earnings gappers follow through this close often without giving much room for error. Just another way to try to position in a monster in the making.

Acronyms in chart:

HVE - Highest Volume Ever

HVIPO - Highest Volume Since IPO

HV1 - Highest Volume One Year

FOFTV - Follow on Follow Through Volume

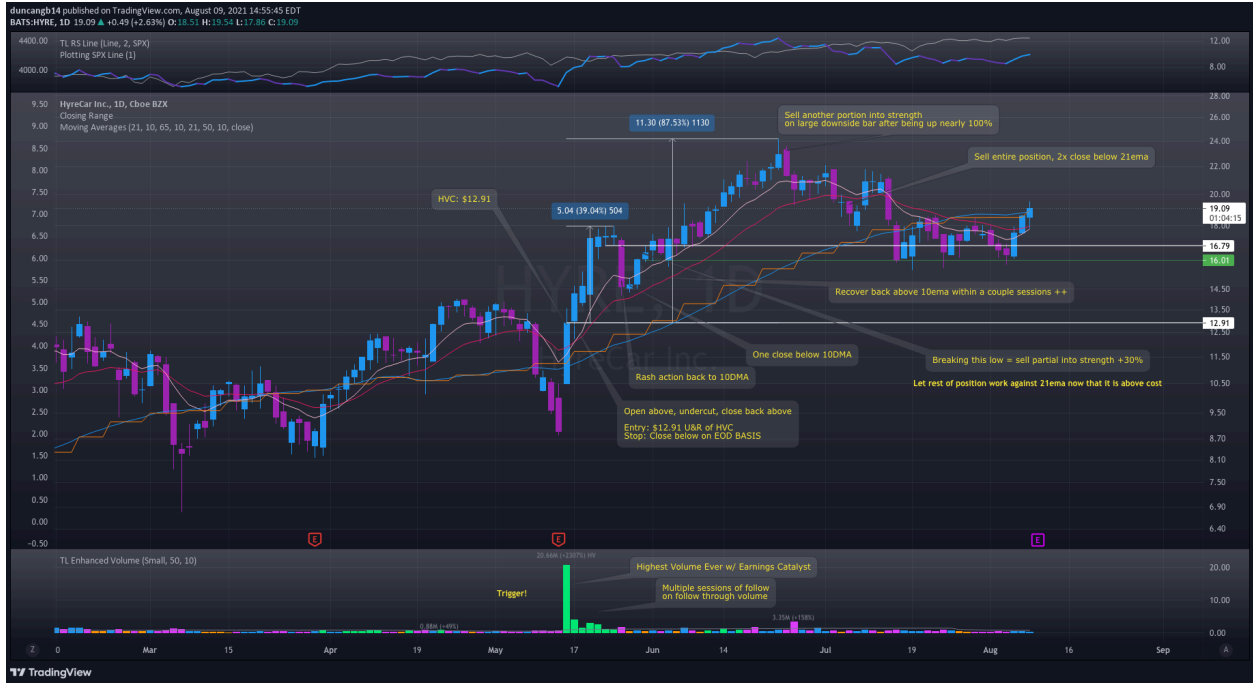
LC: <https://www.tradingview.com/x/NY1fWp8o/>



EXPI - <https://www.tradingview.com/x/zJNFB027/>



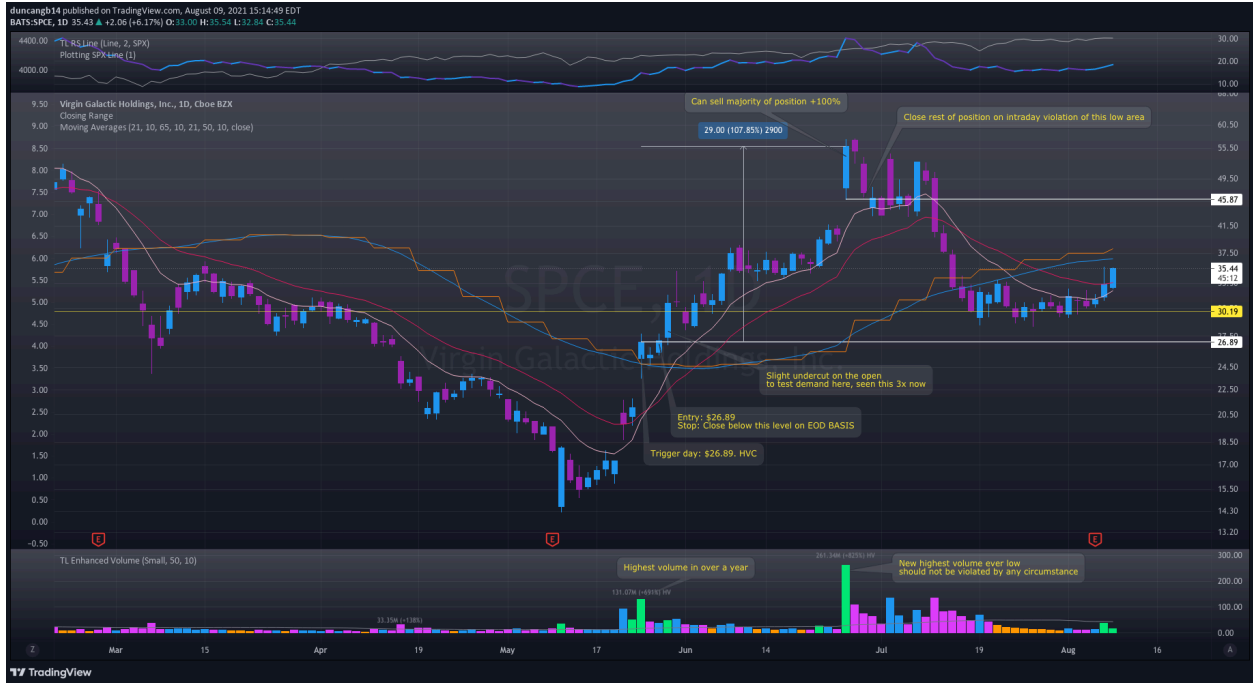
# HYRE - <https://www.tradingview.com/x/woZBDxcE/>



ZI - <https://www.tradingview.com/x/EVLVTNrk/>



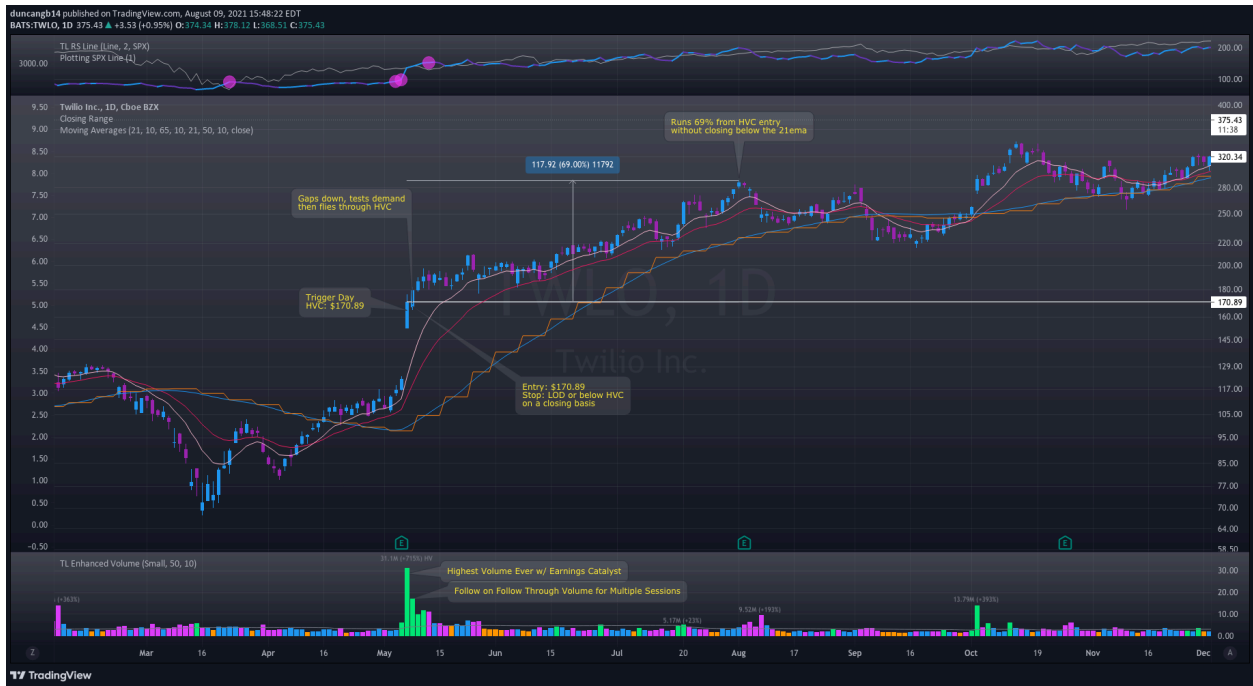
SPCE - <https://www.tradingview.com/x/zyLotLf/>



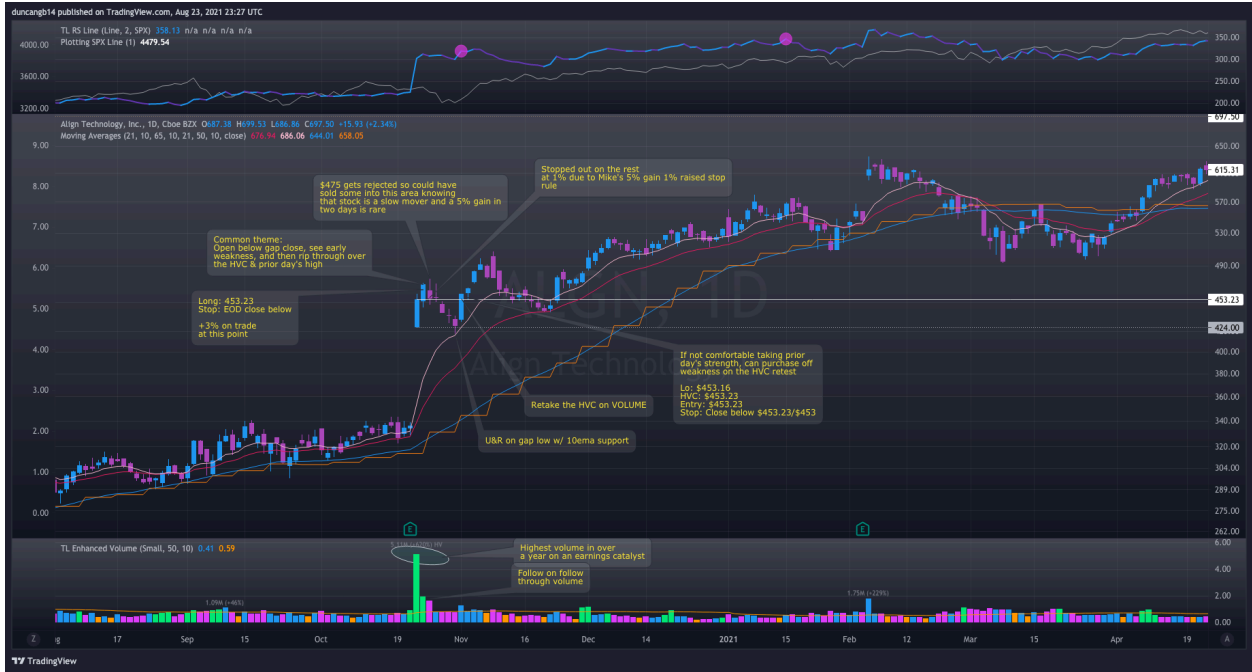
SQ - <https://www.tradingview.com/x/jGPgffUC/>



TWLO 2020 - <https://www.tradingview.com/x/d0N6MP9d/>



ALGN - <https://www.tradingview.com/x/d1GIBH9D/>



FSLY: <https://s3.tradingview.com/snapshots/g/g2jpkvXz.png>



UPST: <https://s3.tradingview.com/snapshots/t/ThZesrpu.png>



CMG: <https://www.tradingview.com/x/CMIo8cyR/>





TEAM: <https://www.tradingview.com/x/EqjiGFS2/>



U: <https://www.tradingview.com/x/ihTi3f2e/>



Knowing that the volume  
wasn't the highest in a year,  
since IPO, or ever, we can  
develop a quicker profit taking  
& size down the position - something  
to think about and formulate here

DOCS: <https://www.tradingview.com/x/ZldOohGp/>



SE (2018): <https://s3.tradingview.com/snapshots/e/E13G4T3q.png>

FULC: <https://www.tradingview.com/x/Ztioecl/>



SSSS: <https://www.tradingview.com/x/syblRJOI/>



AON: <https://www.tradingview.com/x/pEqI01SY/>



Areas of further study:

1. AON
2. CFLT
3. BTBT
4. PSTG
5. DKS
6. BILL
7. AFRM
8. BGFV
9. DXCM
10. NTLA
11. ASAN
12. BYSI
13. CERE
14. PSTG
15. ICU
16. OG
17. TDC
18. NCNO
19. PWR
20. CURV
21. SCR
22. LOVE
23. AEHR
24. MEC
25. IRTC
26. RCUS
27. NTN
28. ISEE
29. SPSC
30. LULU
31. SIMO
32. KLIC
33. OG
34. NTLA
35. TROX
36. BBIG
37. SITM
38. SWCH
39. YELP
40. TROX
41. FLWS
42. POWI

43. SFIX
44. UBER
45. LFYT
46. PDD
47. SB
48. CLDX
49. SE
50. GDYN
51. CYTK
52. SGMS
53. INBX
54. TIPT
55. AA
56. MGTX
57. ALGM
58. ARCT
59. ARLO
60. AXON
61. BABA
62. BMEA
63. CDMO
64. CERT
65. DKNG
66. DKS
67. DTC
68. ELF
69. EXAS
70. FSLR
71. FSLY
72. IONQ
73. ISEE
74. LNTH
75. MAXN
76. ONON
77. OSCR
78. PANW
79. PI
80. PVH
81. SE
82. SHC
83. SLAB
84. SPOT
85. SSYS
86. TECK

87. TGTX  
88. TMDX  
89. TSLA  
90. VKTX  
91. WING  
92. DRS  
93. ALNY  
94. AXSM  
95. CELH  
96. CHWY  
97. CMG  
98. CSIQ  
99. DGII  
100. FSLR  
101. GKOS  
102. HOLI  
103. KRTX  
104. KRUS  
105. LNTH  
106. NET  
107. NOVA  
108. PANW  
109. PLRX  
110. SRTS  
111. SWAV  
112. TEAM  
113. TMDX  
114. TTD  
115. UBER  
116. VRDN  
117. WOLF  
118. AEHR  
119. AGFY  
120. ASAN  
121. BBW  
122. BCRX  
123. BITF  
124. BNTX  
125. BTCM  
126. BTU  
127. BYSI  
128. CERS  
129. CHS  
130. CRTO

131. CRTX  
132. FLGC  
133. FULC  
134. HLIT  
135. HUT  
136. ISEE  
137. JILL  
138. LWLG  
139. MRNA  
140. NTLA  
141. NTP  
142. PFMT  
143. PFSW  
144. PRTA  
145. SAVA  
146. SITM  
147. STKS  
148. TMST  
149. VRTV  
150. ZDGE  
151. ACET  
152. AGRO  
153. ATER  
154. BFRI  
155. BKR  
156. BPT  
157. BTU  
158. CELZ  
159. CF  
160. CLF  
161. CTIC  
162. DDL  
163. DRCT  
164. DWAC  
165. EGY  
166. EIGR  
167. ENPH  
168. EOLS  
169. EQT  
170. EXTN  
171. FRGE  
172. GLNG  
173. IMXI  
174. INDO

175. KOS  
176. KZR  
177. LXU  
178. MOS  
179. NEX  
180. NEXT  
181. NFE  
182. OXY  
183. PRVB  
184. RES  
185. RRS  
186. RUN  
187. SLCA  
188. TMST  
189. VLD  
190. VTNR  
191. VRTV  
192. VYGR  
193. X  
194. AERC  
195. AMD  
196. APYX  
197. ATI  
198. BMBL  
199. CHWY  
200. GFF  
201. HDSN  
202. LMNR  
203. LNTH  
204. PLAB  
205. PSTG  
206. RPTX  
207. SGML  
208. SWAV  
209. SWIR  
210. TMDX