

## Experiment 4 Potential Difference

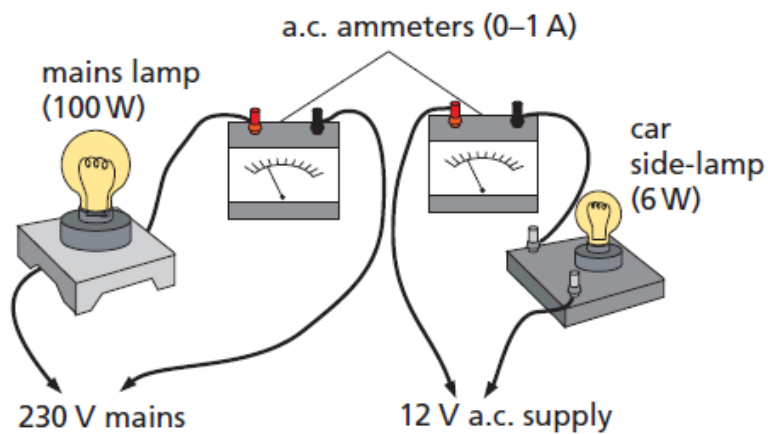
### Materials required

Power supply, wire, resistors, bulb, LED, battery, voltmeter, ammeter, protoboard

### Questions to Electric Current

1. Why is voltmeter applied to circuit in parallel?
2. Describe the potential difference behaviour in series and parallel circuits.

### Experiments to be proven

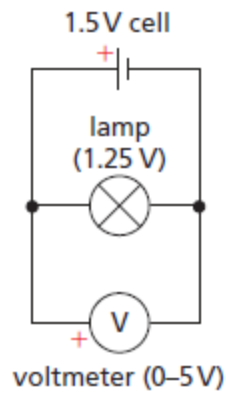


**Experiment 1.** Investigating the potential difference effects of power sources to current

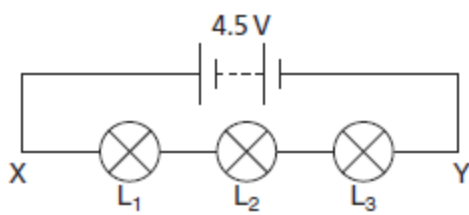
Please describe the experiment procedure in a paragraph

Please attach a photograph of result

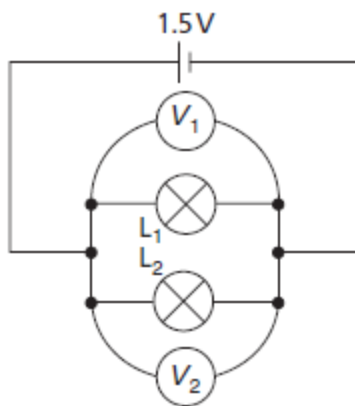
Please describe the finding in a paragraph



a



b



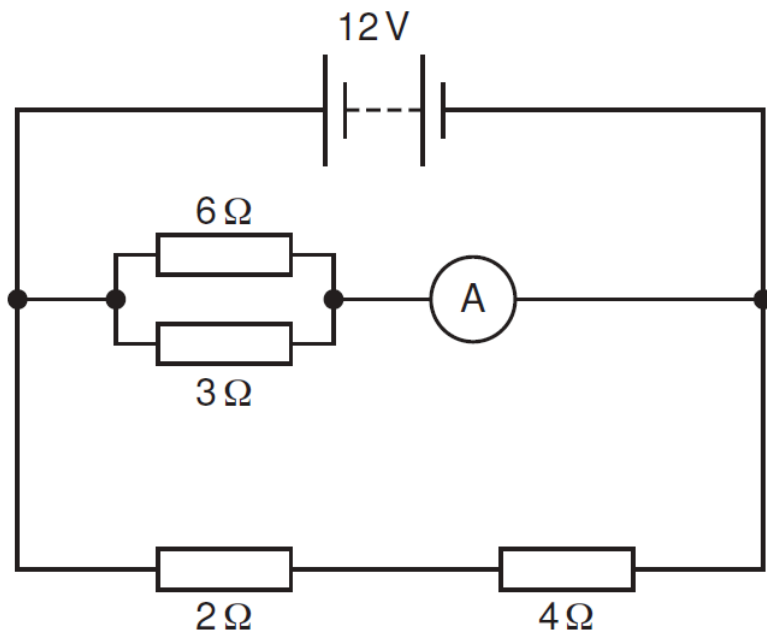
c

### Experiment 2. Using Voltmeter in series and parallel circuits

Please describe the experiment procedure in a paragraph

Please attach a photograph of result

Please describe the finding in a paragraph



**Experiment 3.** Identifying potential difference in complex circuit

Please describe the experiment procedure in a paragraph

Please attach a photograph of result

Please describe the finding in a paragraph