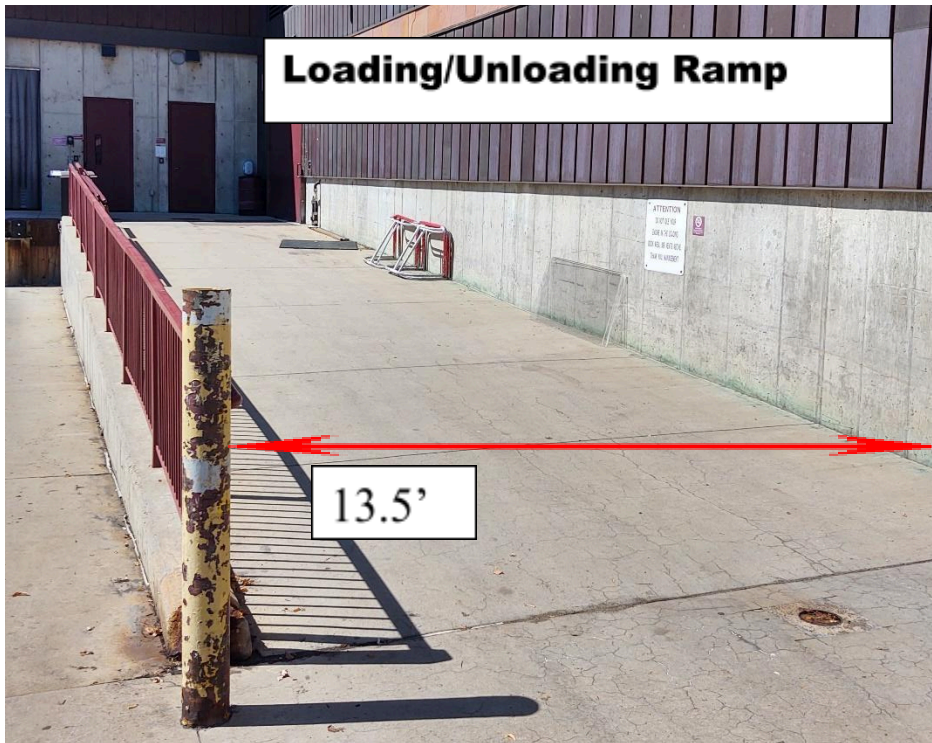


**University of Denver – These pictures were taken during a time of maintenance in the arena. The hallways will be clearer during the event.**

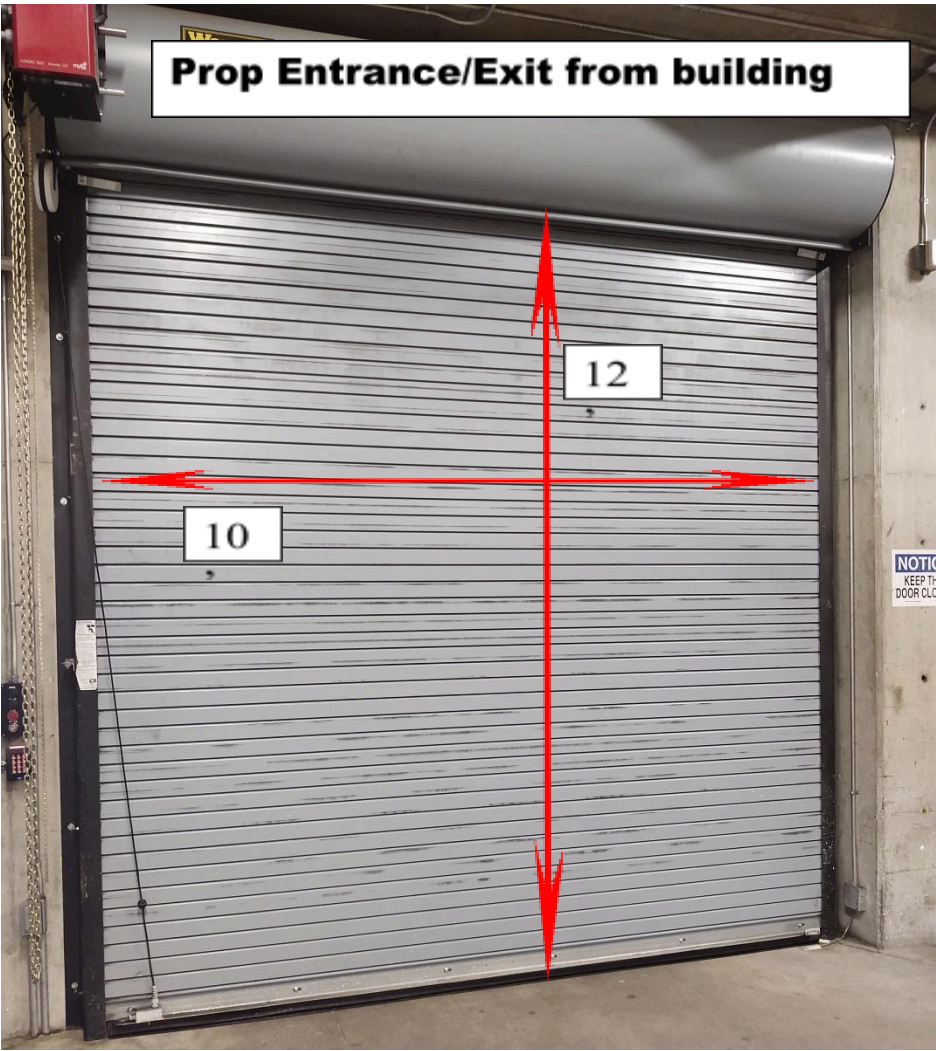


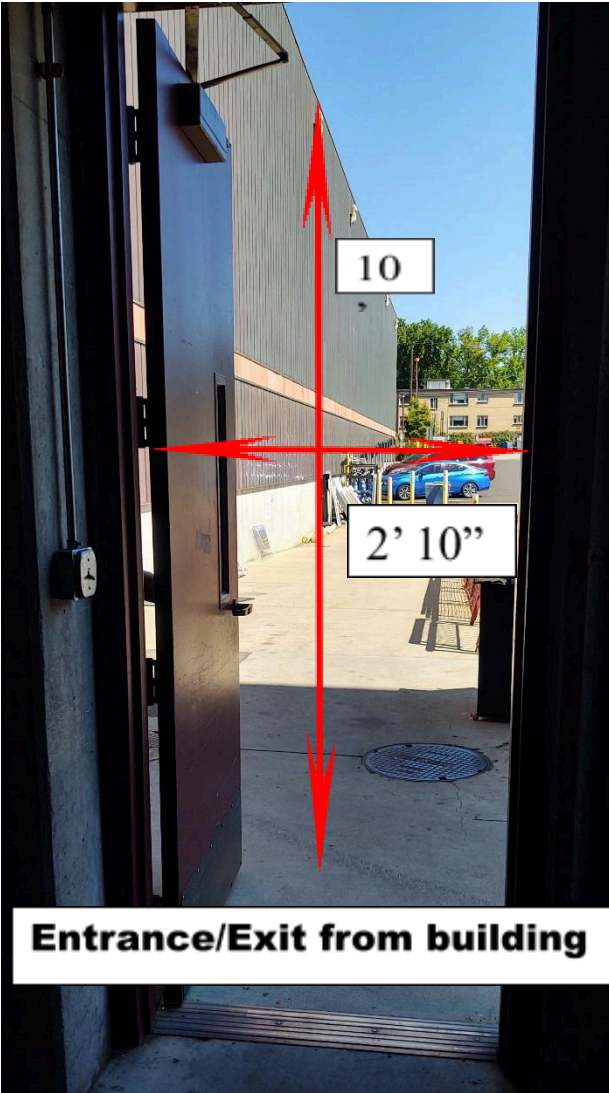
Props will be stationed in multiple areas backstage. Please take the time now to ensure that all wheels roll freely and that anything that touches the floor is padded so as to not damage the floors.

These photos are of the most likely places your props will be stored. Please listen to the RMCGA staff and follow their direction when you arrive and throughout the event to ease the flow.

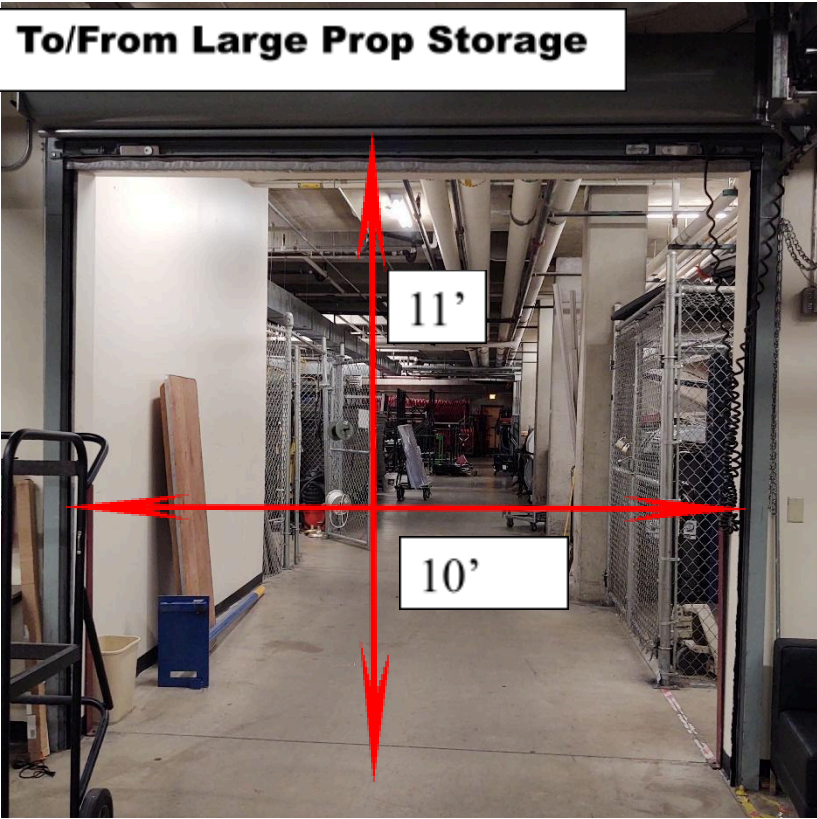
The area marked as large prop storage is very congested with the University as it is their storage space (possibly more now than previous years). We may have very little room for storage here.

**Prop Entrance/Exit from building**

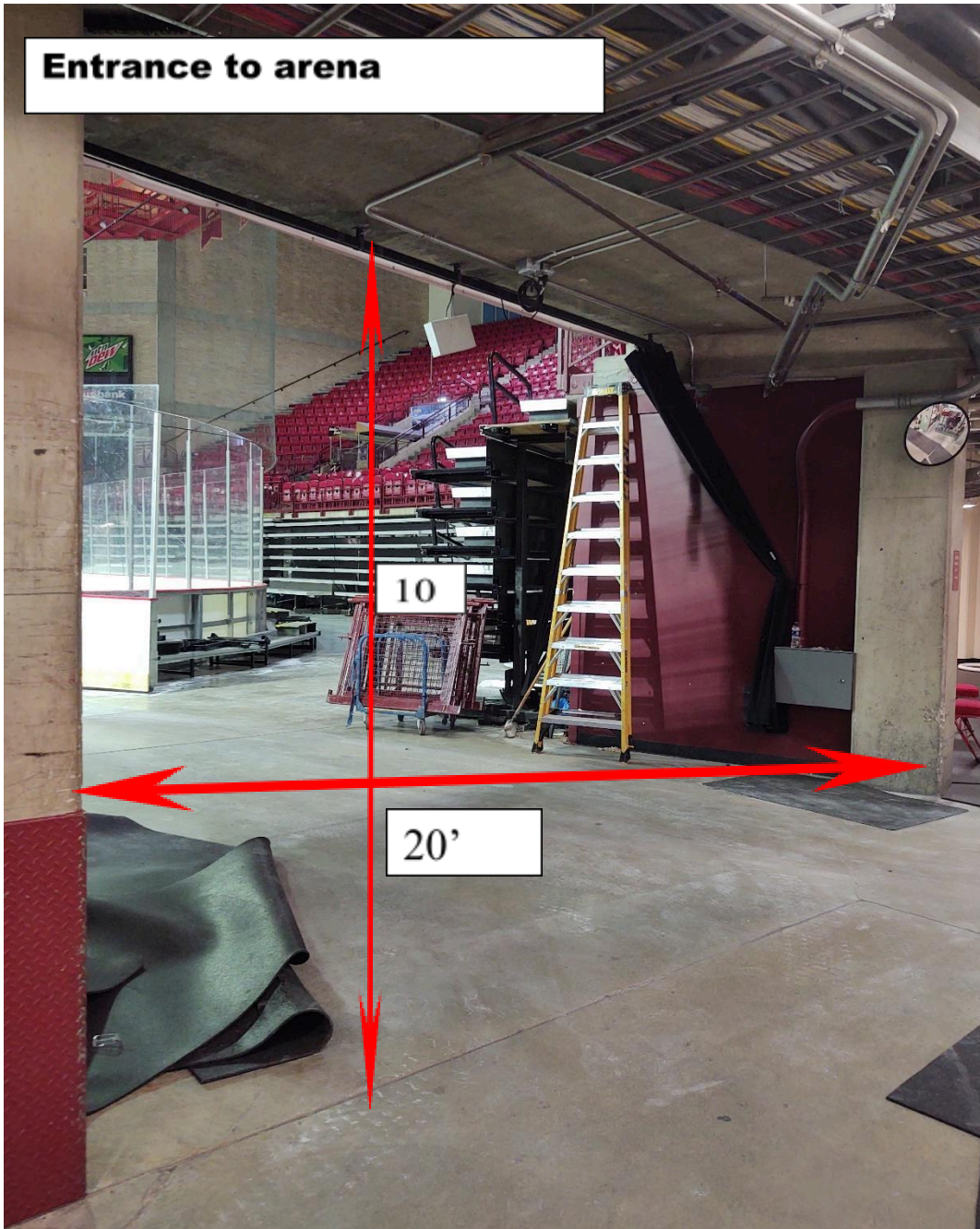




**To/From Large Prop Storage**

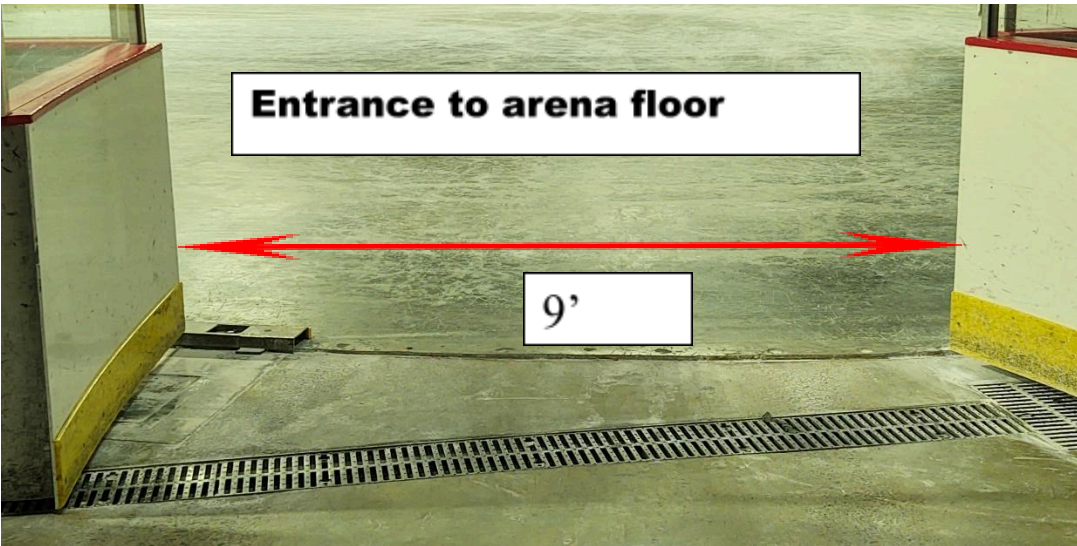


**Entrance to arena**



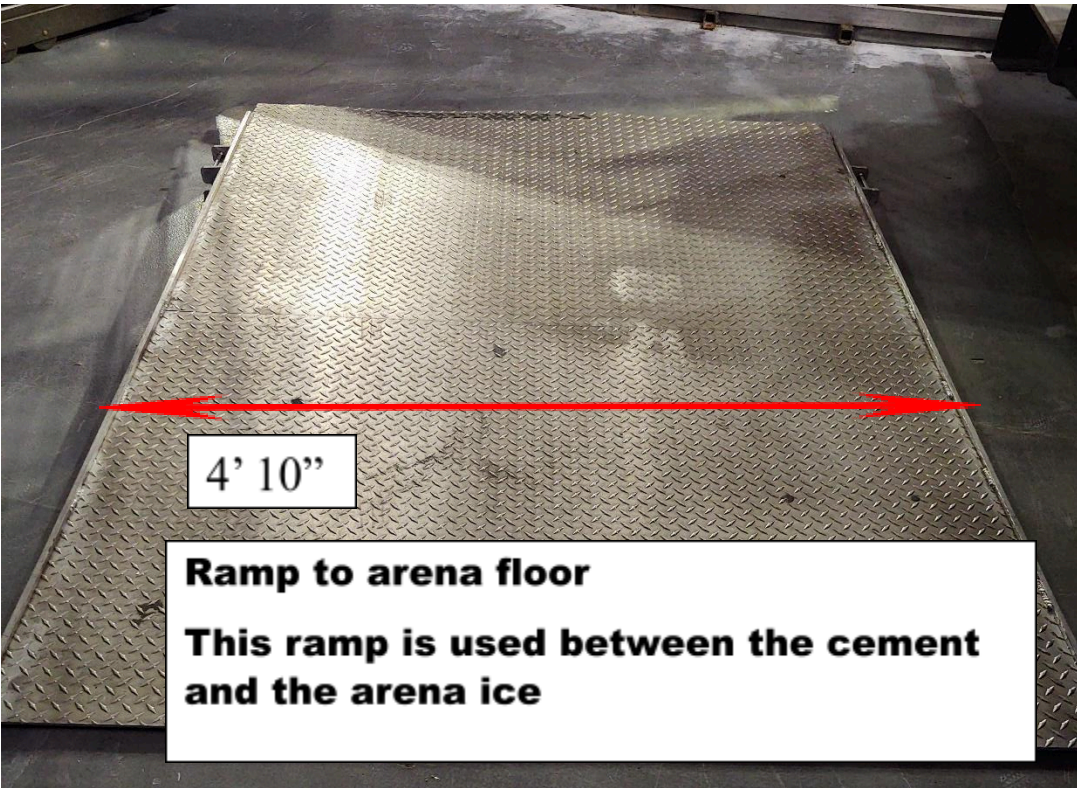
10

20'



**Entrance to arena floor**

9'



4' 10"

**Ramp to arena floor**

**This ramp is used between the cement and the arena ice**

All props must stay away from the mural on the walls.

