



# Washougal High School 2025-26 Course Guide

Home of the Panthers!

## Information

[Letter from Principal](#)

[Graduation Requirements](#)

[High School & Beyond Plan](#)

[Personalized Pathway Requirement](#)

[State Graduation Pathway Requirement](#)

[Four Year Plan/Forecasting Policy and Procedures](#)

[Examples of 4 year plans aligned to post-high school plans](#)

[Dual Credit Opportunities at WHS](#)

[College in the High School](#)

[Career and Technical Education Dual Credit](#)

[Advanced Placement](#)

[Career & Technical Education \(CTE\) Pathways Program Information](#)

[Other Program Opportunities](#)

## Course Listings

[Career and Technical Education \(CTE\)](#)

[Business & Marketing](#)

[Family & Consumer Sciences](#)

[Skilled & Technical](#)

[Science, Technology, Engineering & Math](#)

[Health Sciences](#)

[English](#)

[Fine Arts](#)

[Band](#)

[Choir](#)

[Drama](#)

[Visual Art](#)

[Mathematics](#)

[Physical Education/Health](#)

[Science](#)

[Social Studies](#)

[World Languages](#)

[American Sign Language](#)

[Spanish](#)

[Associated Student Body \(ASB\)](#)

[By permission only](#)



Panther Students and Families,

Perseverance, Respect, Integrity, Diversity, and Empathy are the pillars of what we do and who we are at Washougal High School. While we live by this in our character, value system, and guiding principles it is also important to keep them in mind as you plan for your courses and ultimately your post-secondary planning.

Students at Washougal High School should be expected to be challenged in their coursework knowing that their curriculum will be diversely represented, provide opportunities for critical and higher-level thinking, and engage you in a way that should help you prepare for your future. We offer a wider range of opportunities that include College in the Classroom, Dual Credit, AP Courses, Career and Technical Education courses, and more. Our courses are designed to develop the skills needed to take on the challenges of college or career!

As you use this guide to plan for your courses, keep that Panther PRIDE in mind; challenge yourself, believe in yourself, and know what you do today. . . matters for your future tomorrow.

Best,  
Mark. Castle  
WHS Principal

# Washougal High School Graduation Requirements

All WHS students earning a high school diploma will need to complete three components:

1. Earn 24 credits
2. Complete a graduation pathway
3. Complete a High School and Beyond Plan

## Minimum Credits Required for Graduation

	<u>Classes of 2021 &amp; Beyond</u>
<b>English</b>	<b>4.0 credits</b>
Freshman Eng/Pre-AP Freshman Eng	1.0 credit
Sophomore Eng/Pre-AP Sophomore Eng	1.0 credit
Junior English/AP Language	1.0 credit
Senior English/AP Literature	1.0 credit
<b>Mathematics</b>	<b>3.0 credits</b>
Algebra I	1.0 credit
Geometry	1.0 credit
Algebra II or elective math*	1.0 credit
<b>Social Studies</b>	<b>3.0 credits</b>
World History/AP World History	1.0 credit
U.S. History/AP U.S. History	1.0 credit
CWP (CWP-Civics=.5 & CWP=.5)/AP Gov. & Politics	1.0 credit
Washington State History**	0.0 credit
<b>Science</b>	<b>3.0 credits</b>
<b>Career and Technical Education (CTE)</b>	<b>1.0 credits</b>
<b>Physical Education &amp; Health</b>	<b>2.0 credits</b>
PE	1 .5 credits
Health	.5 credit
<b>Arts</b>	<b>1.0 credit</b>
<b>PPR (Personal Pathway Requirement)***</b>	<b>3.0 credits</b>
<b>Electives****</b>	<b>4.0 credits</b>

### Total Credits Required to Graduate

**24.00 credits**

**NOTE:** All Students will complete a [High School & Beyond Plan](#) and need to meet one of seven State [Personalized Pathway requirements](#) as identified by the state. See page 2.

\* All 4-year colleges/universities require Algebra II or higher math as well as a 4<sup>th</sup> year math or math-based science course during senior year. All 4-year colleges/universities also require 2 credits of the same world language.

\*\* If the student presents evidence of having taken Washington State History (or another state's history) in middle school, the student has fulfilled the requirement.

\*\*\* Each student will develop a Personal Pathways Requirement plan based upon their [High School & Beyond Plan](#). This is where a student might see their world language or additional fine art credit show up, depending on their PPR.

\*\*\*\* Electives can be fulfilled with all courses at WHS once the other required credit areas have been met. (example: a fourth year of math will fill in elective space since three credits would have already been met.)

\*\*\*\*\* The 3rd credit of math is chosen by the student based on the student's interest and High School and Beyond Plan, and approved by the parent or guardian, or if the parent or guardian is unavailable or does not indicate a preference, the school counselor or principal (WAC 180-51-068).

\*\*\*\*\* Students will be placed in the next level class based on Board Policy 2195: Academic Acceleration

## PERSONALIZED PATHWAY REQUIREMENT (PPR in credits)

The Personalized Pathway Requirement (PPR) is intended to provide students the option of exploring more deeply a pathway oriented toward specific post-high school career or educational goals.

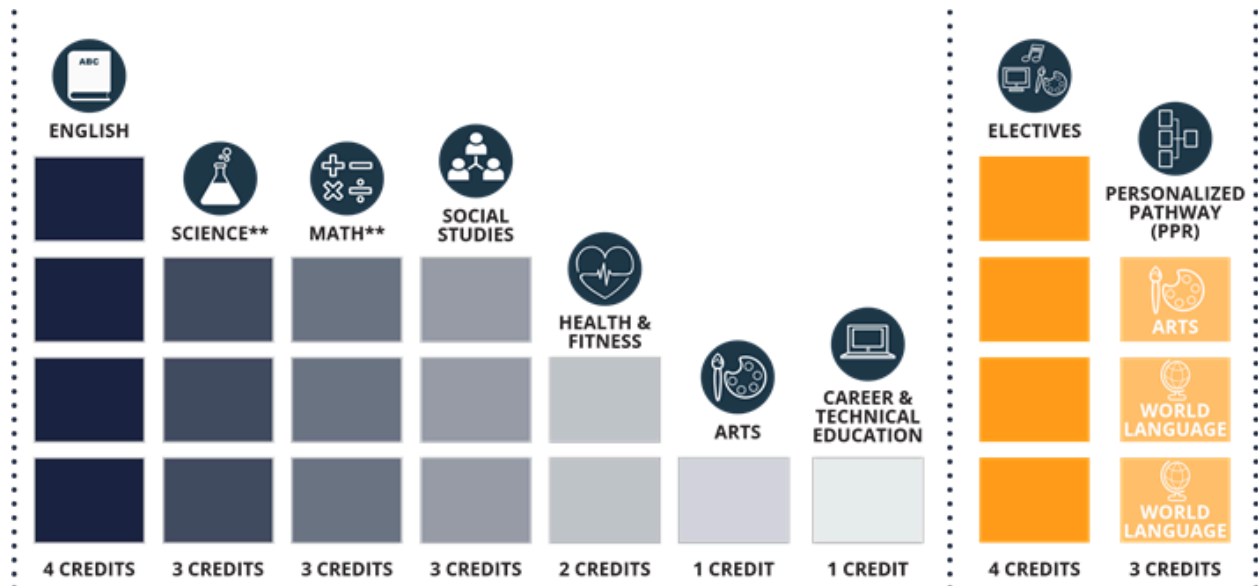
### Definition of a Personalized Pathway Requirement (PPR)

- A sequence of courses, chosen by you, that prepare you to meet your graduation requirements and specific post-high school educational goals.
- Created in collaboration between you, your parent/guardian, school counselor, advisor, or teacher.
- Linked to your High School and Beyond Plan.
- ***The Personalized Pathway allows you to choose courses to meet four year graduation requirements and can replace up to three credits, 1.0 of Fine Art and/or 2.0 credits of World Language.***
- These three choices, along with four electives and seventeen core courses complete your 24 credits needed for high school graduation.

### What are the benefits of a Personalized Pathway Requirement ?

- The PPR allows students the option of taking a longer sequence of courses within an area of interest or passion.
- An increase in the relevance and impact of a student's high school education by allowing more choice and freedom in course selection.
- Technical skill attainment specific to your chosen post-high school plan.

### Another way to view your credits



## HIGH SCHOOL & BEYOND PLAN

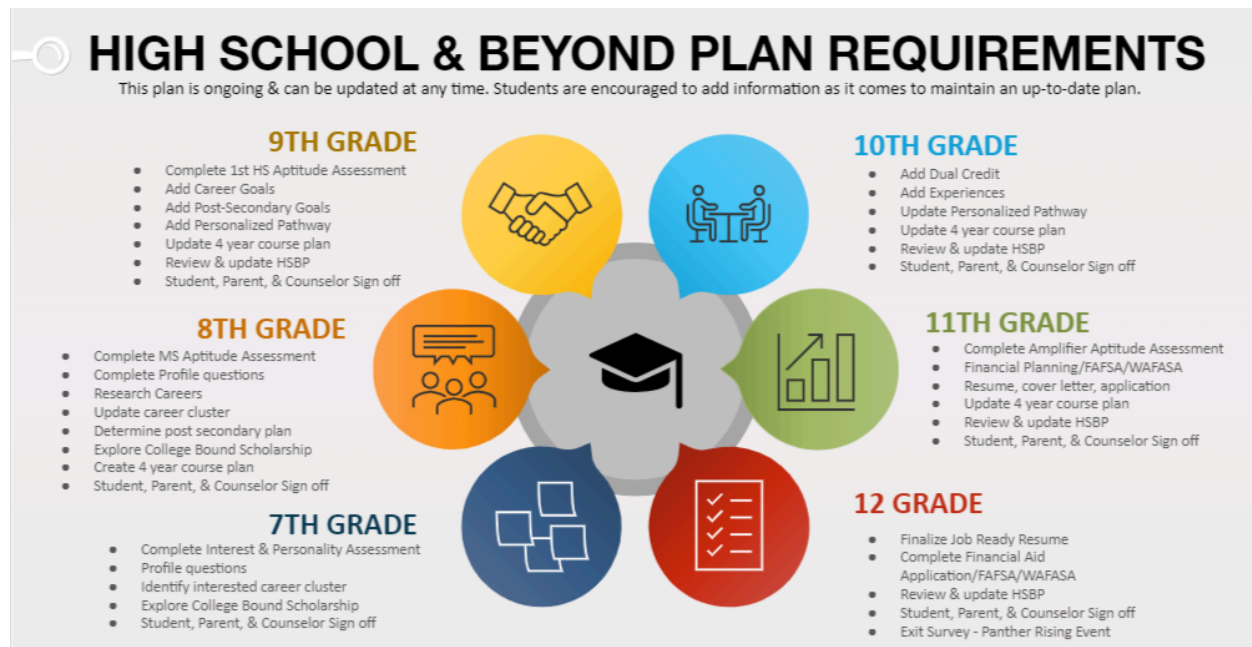
### What is the High School & Beyond Plan?

*Culminating Outcome:* A one year after high school graduation plan prepared for options in career, college, and life.

The High School & Beyond Plan helps students gain knowledge and skills to plan current and future goals. Students revise their plan annually to accommodate changing interests, personalized pathway choices, and post-secondary goals on what they expect to do the year following high school graduation. Post-secondary aspirations may include pathways for application to four-year colleges or universities, two-year community or technical colleges, apprenticeship programs, industry standard certificate programs, military training, or on-the-job training and workforce entry.

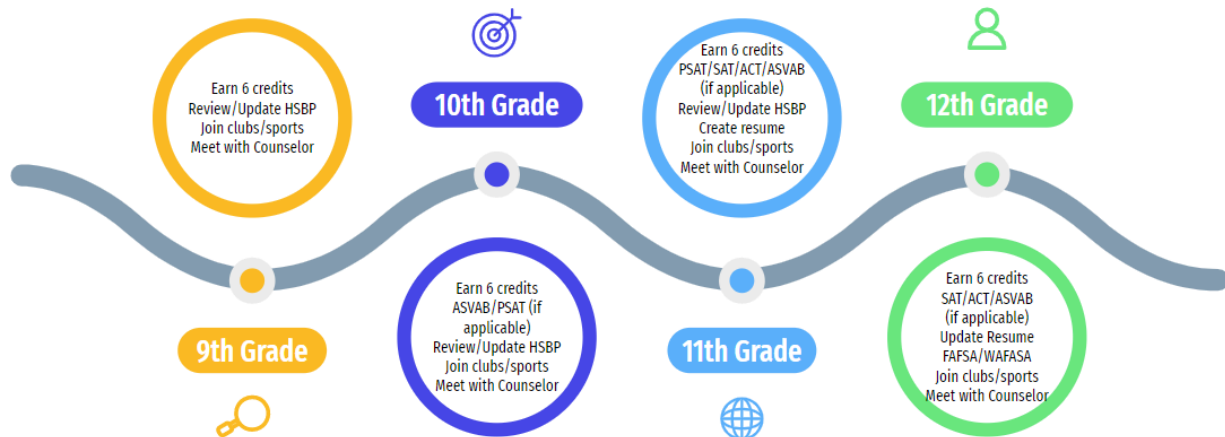
### High School and Beyond Plan state guidelines:

- Identification of career goals, aided by skills and career interest survey assessments and identification of educational goals for graduation and beyond
- A four-year plan for courses taken in high school that satisfies state and local graduation requirements and aligns with students' secondary and postsecondary goals that may include education, training, and careers
- Options for satisfying state and local graduation requirements, academic acceleration, dual credit courses, Career and Technical Education programs, and graduation pathway options
- Resume or activity log, that includes the student's education, work experience, community service
- Evidence that the student has received information on federal and state financial aid programs that help pay for postsecondary programs



For more information on your HSBP, contact the WHS Career Specialist or your counselor.

# High School Timeline



## MINIMUM COLLEGE ADMISSIONS STANDARDS at Washington's Public Four-Year Colleges



### REQUIRED CREDITS

- ☐ 4 credits of English
- ☐ 3 credits of Math (including Algebra II or higher)
- ☐ Senior year quantitative math or science
- ☐ 3 credits of Social Studies
- ☐ 3 credits of Science
- ☐ 2 credits of the same World Language
- ☐ 1 credit of Arts



### GPA

- ☐ Maintain at least a 2.0 grade point average



### SAT and ACT

- ☐ Take the SAT or ACT
- ☐ Have the scores sent directly to the colleges you want to attend

Chosen courses from these categories should include some Advanced Placement (AP) Dual Credit courses. This also includes Military Academies and ROTC programs available at Universities. Note there may be additional requirements depending on the school so be sure to check out each individual school for more information. SAT/ACT may also vary based on individual college requirements.

## **CAREER/TECHNICAL AND COMMUNITY COLLEGE REQUIREMENTS**

There are many educational institutions for career/technical education in addition to many community colleges throughout the state of Washington. Regular admission leading to an AS degree (Associate of Science, one to two year program certification) or an AA degree (Associate of Arts leading to a BA degree), students need to complete the following:

1. As many math and science courses as possible.
2. Submit an official high school transcript.
3. Complete entrance exams, if needed.

**It is strongly recommended that students take the same course of study required for entrance to a 4-year college.**

## **REQUIREMENTS FOR MILITARY SERVICE**

The Armed Forces constitute America's largest employer. Military service provides educational opportunities and work experience in literally hundreds of occupations. The following are important requirements to keep in mind if planning to enter a branch of the military:

- |                                 |                             |                         |
|---------------------------------|-----------------------------|-------------------------|
| 1. High School Diploma Required | 3. At least 17 years of age | 5. Physically qualified |
| 2. No criminal record           | 4. Drug free life-style     | 6. Good moral character |

Entrance into the Military also requires the completion of the Armed Services Vocational Aptitude Battery (ASVAB) assessment. Each branch of the military has a different minimum qualifying score, which fluctuates over time. Please see the Career Center for more information.

### **ASVAB**

*(The Armed Service Vocational Aptitude Battery) Grades 10, 11, and 12*

The ASVAB is conducted by the US Department of Defense at no cost or obligation to the student. This test is conducted during the fall. The student may also use these results in making career choices. The military uses this assessment to determine job assignments if an individual elects to enlist in the military.

## **VALEDICTORIAN AND SALUTATORIAN SELECTION REQUIREMENTS:**

Starting with the class of 2029 for the purpose of determining our Valedictorian and Salutatorian, WHS will use a weighted GPA. AP, CiHS, and core academic Running Start classes will be weighted with A=5.0, A-4.7, B+4.3, B 4.0, B- 3.7, C+3.3, C 3.0, C-2.7, D+2.3, D2.0, D-1.7, F 0.0. Running start online courses will not be weighted. Core academic classes are defined by math, science, english, and social studies equivalencies.

## State Graduation (Personalized) Pathway Required

Students must meet State Pathway requirements by achieving ONE of the following options.

### Pathway Requirement for Graduation

*Students must demonstrate college and career readiness in ELA and Math.*

### Career/Technical Field = CTE Course Sequence

- ✓ Complete 2.0 or more credits that either include a dual credit course or lead to an industry recognized credential (at WHS or CTA)
- ✓ Meets both ELA and Math

[View WHS CTE Graduation Pathways Here](#) (also available later in this guide)

### Military Career Interest = ASVAB Exam (AFQT Section)

- ✓ Score for Class of 2026 = 31
- ✓ Meets both ELA and Math
- ✓ Check the State Board of Education website by September 1 annually  
([www.sbe.wa.gov/our-work/graduation-pathway-options/asvab](http://www.sbe.wa.gov/our-work/graduation-pathway-options/asvab))

### Postsecondary Education = English Language Arts (ELA) and Math Courses & Exams

(Can use any combination of the ELA and Math options listed in this section.)

- ✓ ACT (ELA = 14; math = 16) or SAT (ELA = 410; math = 430)
- ✓ Dual credit courses (1.0 credit total):
  - AP/IB/Cambridge: Earn a C+ in state-approved course (each term)
  - CTE Dual Credit (must earn high school credit)
  - College in the High School or Running Start courses (local approval)
- ✓ Dual credit exams (for state-approved courses):
  - AP = 3+
  - Cambridge = E or better
  - IB = 4+
- ✓ State assessments:
  - Smarter Balanced: ELA = 2548; math = 2595



## 1. Statewide Assessment Scores in **ELA** & **Math**

**(Taking this assessment is MANDATORY and can also be a students' graduation pathway)**

Achieve the graduation cut score on the on-grade level Smarter Balanced Assessment for **ELA (2548)** and/or **Math (2595)** The first and most common option to graduation is to meet the graduation cut score on Smarter Balanced ELA and Math. All students will take this test in 10th grade and have the option to retake it in the spring of 11th and 12th grade.

## 2. Dual Credit Courses

Complete and qualify for college credit in dual-credit courses in **ELA** or **Math**.

For AP classes, students must earn a C+ or higher and do not need to take or pass the AP exam.

For College in the High School and Running Start classes, students must take and pass courses that have the potential to earn college "Math/Quantitative" or "English/Communications" credit at the 100 level or higher.

## 3. College Admission Exam scores for **ELA** and/or **Math** (SAT/ACT)

Exam scores from the SAT, SAT with Essay, ACT, or ACT with Writing may be used, as applicable.

	SAT with Essay	SAT	ACT with Writing	ACT
Math	430	430	16	16
ELA	410	N/A	14	N/A



## 4. Advanced Placement Exams

Score a 3 or higher on one of the following AP Exams:

### **English Language Arts:**

English Language and Composition, English Literature and Composition, US History, US Government and Politics.

**Mathematics:** Calculus, Computer Science Principles

## 5. Combination

Students can meet their graduation pathway requirement with any combination of at least one **ELA** and at least one **Math** pathway from options 1-4.

## 6. Armed Services Vocational Aptitude Battery (ASVAB)

Students whose high school and beyond plan include enlisting in the military can meet pathway requirements by earning at least the minimum score on the Armed Forces Qualification Test (AFQT) portion of the ASVAB. (Cut scores to be determined by the state board of education & can change annually.)

## 7. Career Technical Education Course Sequence

Students can meet a pathway requirement by completing a designated CTE course sequence connected to the High School and Beyond Plan. A sequence is two or more high school credits of CTE courses that are technically intensive and rigorous. Credits should be within the same program and align with the student's post-secondary plans as outlined in the HSBP. (Courses outside of the program area must be approved locally & by OSPI.) Cascadia Tech programs are included in this option.

## Forecasting (Class Selection) Policy and Procedures

Students forecast for classes every spring with the assistance of school counselors, teachers and guardians while updating their 4-year plan. Students learn about graduation requirements and their academic standing through grade level assemblies, classroom visits, hands-on activities and independently with their counselors. As students update their 4-year plans, they should include required and elective courses they would like to take based on their post-high school education plan. Core classes such as math, science, and English could be but are not necessarily based on student preferences. **They may be automatically assigned based on academic level or other reasons.** Classes requiring an application (Cascadia Tech (CTA), WorkSite Learning, etc.), or audition (choir, jazz band, etc.) will be assigned accordingly and placed within the student's schedule. The four year plan/forecasting process helps to determine the number of sections needed for classes and to distribute students appropriately so as not to overload classes.

Students can view a draft copy of their schedule in August via Skyward Student Access, however, schedules are subject to change. All students will pick up another copy on the first day of school. Students will be notified if their schedules are adjusted after the first day of school. Also, we do not move academic courses such as math, science, history, and English to accommodate elective preferences.

## Class Schedule Change Policy/Procedure

**Students in year-long academic courses must remain in those courses for the entire year. Since students choose their elective courses (even alternatives), they will remain in the elective courses they are placed in at the beginning of each semester.**

Course changes must be completed within the first 5 days of each semester. This does not guarantee that the request will be honored. After 5 days, a W will be placed on a student's transcript if he/she drops a course. We do not change student schedules at mid-term unless initiated by a teacher or administrator due to serious academic, behavioral, or disciplinary issues

### **Schedule changes may be made for the following reasons:**

- Academic misplacement
- Program change
- Post-high school education change that would be negatively impacted without certain classes
- Missing an academic class that is required that year
- Missing a graduation requirement that is needed that year
- To balance classes so that overcrowding does not occur.

### **Schedules will not be changed for the following reasons:**

- Students do not like the teacher.
- Parents do not like the teacher.
- Course/teacher is too hard, too much homework.
- The student is failing the class.
- The class is perceived by the student to be too difficult.
- Change the student's lunch.
- Have classes with friends.

If there are concerns with a particular course/teacher students will participate in a facilitated restorative conference to rebuild/repair relationships to assist in future success.

## Examples of Four Year Plans aligned to post-high school plans

### Course Planning Example - 4 year college (STEM Focus)

Subject/ Credit	HS Credit earned in 8th grade	9th Grade	10th Grade	11th Grade	12th Grade
English 4		<input type="checkbox"/> Pre-AP Fresh English	<input type="checkbox"/> Pre-AP Soph Eng	<input type="checkbox"/> AP Language	<input type="checkbox"/> AP Literature
Math 3	<input type="checkbox"/> Algebra 1	<input type="checkbox"/> Geometry	<input type="checkbox"/> Algebra 2	<input type="checkbox"/> Pre-Calculus	<input type="checkbox"/> AP Calculus AB
Social Studies 3	<input type="checkbox"/> WA State History		<input type="checkbox"/> World History	<input type="checkbox"/> US History	<input type="checkbox"/> CWP
Lab Science 3		<input type="checkbox"/> AP Environmental	<input type="checkbox"/> AP Biology	<input type="checkbox"/> AP Physics	<input type="checkbox"/> AP Chem
CTE 1		<input type="checkbox"/> Engineering			<input type="checkbox"/> Cybersecurity
PE/ Health 2		<input type="checkbox"/> Family Health & PE		<input type="checkbox"/> Foundations of PE & Team Sports	
ART 1			<input type="checkbox"/> Intro to Art & FA Woodworking		
PPR/ Elective 7		<input type="checkbox"/> Spanish 1	<input type="checkbox"/> Spanish 2	<input type="checkbox"/> Spanish 3	<input type="checkbox"/> AP Computer Science Principles

### Course Planning Example - 2 year college/trades (Hospitality)

Subject/ Credit	HS Credit earned in 8th grade	9th Grade	10th Grade	11th Grade	12th Grade
English 4		<input type="checkbox"/> Fresh English	<input type="checkbox"/> Sophomore English	<input type="checkbox"/> Junior English	<input type="checkbox"/> Senior English
Math 3		<input type="checkbox"/> Algebra 1	<input type="checkbox"/> Geometry	<input type="checkbox"/> Algebra 2	<input type="checkbox"/> Applied Math
Social Studies 3	<input type="checkbox"/> WA State History		<input type="checkbox"/> AP World History	<input type="checkbox"/> AP US History	<input type="checkbox"/> AP Gov
Lab Science 3		<input type="checkbox"/> Physical Science	<input type="checkbox"/> Biology	<input type="checkbox"/> Chemistry	
CTE 1		<input type="checkbox"/> Intro to Culinary & Baking & Pastry	<input type="checkbox"/> Adv. Culinary	<input type="checkbox"/> Adv. Culinary 2	
PE/ Health 2		<input type="checkbox"/> Family Health & Foundations of PE			<input type="checkbox"/> Weight Lifting & Team Sports
ART 1					<input type="checkbox"/> Concert Choir
PPR/ Elective 7		<input type="checkbox"/> ASL 1	<input type="checkbox"/> ASL 2	<input type="checkbox"/> ASL 3	<input type="checkbox"/> Worksite Learning

\* Students are encouraged to take classes that enhance their high school experience and align to their post high school/career goals in order to develop a well-rounded individual ready for college and a career.

# Dual Credit Opportunities Through Washougal High School

## What is Dual Credit?

Dual credit programs give students the opportunity to earn high school and college credit simultaneously. Students who earn college credit are more likely to graduate high school, enroll in college, and complete college degrees and certificate programs. Get a head start on your future and earn credit for both high school and college, simultaneously.

There are three main ways that students can get dual credit.

### 1. Dual Credit: College in the High School/Running Start

- Complete and pass college courses through College in the High School and Running Start.
- Speak with your counselor or class teacher about requirements and fees associated with this type of dual credit.
- College in the High School Courses that meet this type of dual credit are identified by the image:



### 2. Credit by examination

- Complete Advanced Placement exams with a score of 3 or better. Course credit is dependent upon individual colleges. Please consult with your intended university to determine course credits based on a specific score.
- Advanced Placement exam fees are paid by Washougal High School.
- Students enrolled in Advanced Placement courses are expected to take the Advanced Placement exam scheduled by the College Board in the spring of each school year.
- Courses that meet this type of dual credit are identified by the image:



### 3. Credit by articulation

- Complete career and technical education (CTE) dual credit courses.
- There is no fee for this type of dual credit.
- Students may need to apply to the college to access their credit via 'request of college transcript'.
- Courses that meet this type of dual credit are identified by the image:



## Dual Credit: College in the High School

College in the High Schools allows high school students to take college courses from approved high school instructors without leaving their high school campus. Students grades 9-12 are able to participate in the program. There is no fee for students to enroll in or receive earned dual credit in CinHS courses. There may be course level fees unrelated to earning dual credit.

- Students and families should be aware that accepting the college credit automatically starts an official college transcript with the institution offering the course that will include the student's performance, and that college credit earned may count as elective or academic credit depending on the receiving college's transfer credit policies.

Course	College / University
PreCalculus	Central Washington University
Spanish II, III, IV	Central Washington University
Chemistry 110	University of Washington (fees TBD)
Intermediate Art, Ceramics II and III, Weight Training II, AP Government, AP Psychology	Eastern Washington University (In progress)



## Dual Credit: Career & Technical Education

High School Class	College & Course	Credits
	<b>Clark College</b>	
Intro to Medical Careers & Terminology	AH 104 Health Care delivery & Career Exploration	3
	AH 110 Medical Terminology I	1
BioMedical Anatomy & Physiology	AH 100 Basic Concepts of A&P	3
Applied Math	PTCS 110 Professional Technical Computation Skills	5
Personal Finance	BUS 160 Personal Finance	5
Child Development & Ed	ECED& 105 Intro to Early Childhood Ed	5
	ECED& 1207 Health/Safety/Nutrition	5
Worksite Learning	BUS 148 Business Professional Self Development	3
Metals Manufacturing & Tech	WELD 156 Welding Certification	2
	WELD 157 Welding Fabrication Projects	2

Intro the Culinary	CUIS 140 Classic & Modern Soups & Sauces	2
Baking & Pastry	CUIS 143 Restaurant Baking OR PBAK 121 Cookies, Brownies, Bars & Quick Breads	3 or 5
Advanced Culinary	CUIS 144 Banquet, Buffet Planning & Execution	2
	<b>Lower Columbia Community College</b>	
Computer Applications I&II	CS 110: Microcomputer Applications	3
(Full Year)	BTEC 145: Intro to MS Word	5
	OR	
	BTEC 111: Word Processing I	5
	BTEC 131: Intro to Spreadsheets	5
	BTEC 146: PowerPoint Fundamentals	2
	BTEC 148: Intro to Outlook	2
Small Engines	AMTC 100: Essentials of Mechanics	5
Metals Manufacturing and Technology I & II	WELD 141: SMAW - Stick Welding with E7018	2
	WELD 143: SMAW - Stick Welding with E6010	2
	WELD 255: GTAW Tig Welding w/ER70S-6 & ER5356	1
	WELD 241: FCAW-G Dual Shield Wire Feed Welding w/E71T-1	1
Basic Construction	MFG 105: Industrial Safety	3
Applied Math	Math 106: Industrial Math	5
	<b>Spokane Fall Community College</b>	
ASL 1	ASL& 121: Am Sign Language I	5
ASL 2	ASL& 122: Am Sign Language II	5
ASL 3	ASL& 123: Am Sign Language III	5
	<b>Mt. Hood Community College</b>	
ASL 4	ASL 103 First Year American Sign Language	4
	<b>Clackamas Community College</b>	
Music Production & Sound Engineering 1	Music 106: Audio Recording At Home	1
Music Production & Sound Engineering 2	Music 107: Intro to Audio Recording I	3

\* Students must request their transcript from the respective college to access their dual credit before June 30 of the year in which they received credit.



## Dual Credit: Advanced Placement

WHS offers advanced placement classes that are certified by the College Board. Through college-level AP (Advanced Placement) courses, you can earn credit or advanced standing at most of the nation's colleges and universities. AP courses are available for 9th through 12th grade students. The only requirements are a strong curiosity about the subject you plan to study, a willingness to work hard, and a signed AP course agreement. The AP exam fee is approximately \$100 per exam. A non-refundable deposit of \$40 is due November 1st. The remaining \$58 balance is due prior to the exam.

Students are not required to take and pass Pre-AP classes in order to enroll in AP courses. Pre-AP classes are challenging and require students to be willing and able to work hard. These courses are great preparation to be successful in AP classes.

### What is special about AP?

- Skills developed in AP classes thoroughly prepare students for college courses
- Discussions are challenging, engaging, probing and intellectual
- AP students are taught to be critical and discriminating readers and thinkers. Teaching students to evaluate and interpret challenging primary source texts is a crucial AP component
- AP classes teach students to analyze, interpret, reason, and understand their subject from multiple perspectives

### What are the benefits of taking AP?

- AP classes are highly regarded by universities and college admission officers
- AP success is directly correlated to success at the university level.
- AP prepares students for the rigors of college. Many students feel confident and ready to enter college after AP; many say college is easier

### Who is appropriate for AP?

- AP is open to all students
- Students must be disciplined, curious, and have a strong desire to work hard and learn
- AP is for students who want to learn alongside other dedicated classmates in a challenging and rigorous environment
- AP is for students who love to learn

### Pre-AP and AP Courses offered at WHS: (subject to change based on enrollment)

Pre-AP English 9th Grade	AP Psychology
Pre-AP English 10th Grade	AP Computer Science Principles
AP English Comp 11th Grade	AP Calculus AB
AP English Literature 12th Grade	AP Biology
AP World History	AP Environmental Science
AP US History	AP Physics

AP Government & Politics	AP Studio Art
--------------------------	---------------

[PowerPoint Presentation with videos for our AP program.](#)

**Career & Technical Education(CTE) Programs Pathways Information**





## Career & Tech Ed Graduation Pathways for Washougal High School



### Transportation

- Small Engines 1 & 2
- Metals Tech & Manufacturing 1 & 2
- Leadership in Project Management
- Applied Math
- WSL in Career Pathway



### Manufacturing

- Metals Tech & Manufacturing 1 & 2
- Metals Crafts & Production 1 & 2
- Leadership in Project Management
- Applied Math
- WSL in Career Pathway



### Arch & Construction

- Basic Construction 1 & 2
- FA Woodworking 1 & 2
- Engineering
- Leadership in Project Management
- Applied Math
- WSL in Career Pathway



### Arts, AV Tech & Comm

- Digital Photo 1 & 2
- Video Prod & Design 1 & 2
- Music Prod & Sound Engineering
- Yearbook
- Leadership in Project Management
- Applied Math
- WSL in Career Pathway



### Information Technology

- Computer Apps 1 & 2
- Cybersecurity
- AP Computer Science Principles
- Leadership in Project Management
- WSL in Career Pathway



### Hospitality & Tourism

- Intro to Culinary Arts
- Intro to Baking & Pastry
- Advanced Culinary
- Advanced Baking & Pastry
- Applied Math
- WSL in Career Pathway



### Business/Marketing/Finance

- Computer Apps 1 & 2
- Social Media Marketing 1 & 2
- Leadership in Project Management
- Personal Finance
- WSL in Career Pathway



### Health Science

- Family Health
- Intro to Med Careers/Term
- BioMedical Anatomy & Physiology
- Sports Medicine
- WSL in Career Pathway



### STEM

- Engineering
- AP Computer Science Principles
- Leadership in Project Management
- WSL in Career Pathway



### Education & Training

- Family Health
- Child Development & Ed
- Careers in Education
- Leadership in Project Management
- WSL in Career Pathway



### Human Services

- Family Health
- ASL 1 - 4
- Leadership in Project Management
- WSL in Career Pathway

Updated 9/6/2022

To be eligible for a CTE Pathway, 2 full credits of courses in progression within the pathway are needed. See your counselor for more info.

**NOTE:** Any Cascadia Technical Academy course successfully completed constitutes it's own CTE pathway.

**NOTE:** All WSL (WorkSite Learning) experiences must align to each pathway to be considered part of a student's Pathway.  
Example: Small Engines 1 would be the qualifying class and the WSL experience would need to be related to Transportation.

#### NONDISCRIMINATION STATEMENT

The Washougal School District does not discriminate in any programs or activities on the basis of race, sex, color, religion, creed, national origin, age, veteran or military status, sexual orientation, gender expression, gender identity, disability, or the use of a trained dog guide or service animal and provides equal access to the Boy Scouts and other designated youth groups. The following employee(s) has been designated to handle questions and complaints of alleged discrimination: Civil Rights Coordinator: Aaron Hansen, 4855 Evergreen Way, Washougal, WA 98671, (360) 954-3060; Title IX Officer: Gary McGonigle, 4855 Evergreen Way, Washougal, WA 98671, (360) 954-3104; Section 504 Coordinator: Aaron Hansen, 4855 Evergreen Way, Washougal, WA 98671, (360) 954-3060.

## Other Program Opportunities

## Cascadia Technical Academy: What to Know BEFORE You Apply

The High School and Beyond Plan (HSBP) activities that you develop should align with the career cluster or the CTE pathway you select. Introductory courses in one of the CTE pathways should be completed when possible, before applying to CTA. Counselors and the Career Specialist will refer to the student's HSBP when discussing CTA programs and reviewing admission requirements.

Enrolling in a CTA course will replace three (3) classes in a student's schedule. This will impact the flexibility and variety of courses possible in a student's overall schedule.

Students with completed **on time** applications will receive admission decisions in Mid March regarding admittance to their selected program. Some CTA programs fill quickly and it is not uncommon for programs to have students on a waiting list.

Students considering CTA should plan their art credit and world language (when applicable) for their 9th and 10th grade years.

Visit the [Career Center](#) for additional information about your High School and Beyond Plan and application materials for CTA

[Cascadia Tech Academy Website](#)

### Running Start:

Qualified juniors and Seniors can participate in learning that takes place at Clark college either part or full time. Contact your counselor for more information!

[Clark College Running Start Website](#)

### Washougal Online:

Washougal Online is a blended learning program that is housed in the Excelsior building on the WHS campus. It provides students with flexible schedules and the ability to complete coursework online on school-issued tech devices. Courses are accessible 24 hours a day through asynchronous lessons and tasks, but have expected deadlines for completing assigned tasks. This program works well for independent learners and requires self-management skills necessary for careers or higher education. Please contact your counselor if you are interested in online learning.

## NCAA ELIGIBILITY

If you want to play sports at an NCAA Division I or II school, start by registering for a Certification account with the NCAA Eligibility Center at [eligibilitycenter.org](https://eligibilitycenter.org). If you want to play Division III sports or you aren't sure where you want to compete, start by creating a Profile Page account at [eligibilitycenter.org](https://eligibilitycenter.org).

### ACADEMIC REQUIREMENTS

To play sports at a Division I or II school, you must graduate from high school, complete 16 NCAA-approved core courses, earn a minimum GPA and earn an SAT or ACT score that matches your core-course GPA.

### CORE COURSES

Only courses that appear on your high school's list of NCAA core courses will count toward the 16 core-course requirement; visit [eligibilitycenter.org/courselist](https://eligibilitycenter.org/courselist) for a full list of your high school's approved core courses.

Complete 16 core courses in the following areas:

## Division 1



## Division 2



### GRADE-POINT AVERAGE

The NCAA Eligibility Center calculates your **grade-point average** based only on the grades you earn in NCAA-approved core courses.

- D1 requires a minimum 2.3 GPA.
- D2 requires a minimum 2.2 GPA.

### TEST SCORES

You may take the SAT or ACT an unlimited number of times before you enroll full time in college. Every time you register for the SAT or ACT, use the NCAA Eligibility Center code **9999** to send your scores directly to us from the testing agency. We accept official scores only from the SAT or ACT, and cannot use scores shown on your high school transcript. If you take either test more than once, the best subscore from different tests are used to give you the best possible score. More information regarding the impact of COVID-19 and test scores can be found at [on.ncaa.com/COVID19\\_Fall\\_B](https://on.ncaa.com/COVID19_Fall_B).

### SLIDING SCALE

Divisions 1 and 2 use sliding scales to match test scores and GPAs to determine eligibility. The sliding scale balances your test score with your GPA. If you have a low test score, you need a higher GPA to be eligible. Find more information about sliding scales at [ncaa.org/test-scores](https://ncaa.org/test-scores)

---

## Career and Technical Education (CTE)

### CTE-Business & Marketing

#### Computer Applications I

**BUS110**

This course is designed to teach Microsoft Office skills to create quality papers and presentations throughout their high school career and beyond. Freshmen and sophomores are highly encouraged to take this course as it provides computer skills used in other classes. Students will earn industry standard Microsoft Office certification in Word and PowerPoint. This course also teaches students useful employability and leadership skills, developed through a variety of activities, including the opportunity to participate in FBLA, a student leadership organization.

This course can count for CTE or general elective.

**CREDIT:** 0.5

**TYPE:** Regular

**GRADE:** 9-12

---

#### Computer Applications II



**BUS111**

This is a dual credit course designed to give students hands-on experience using Microsoft Office software. Word documents and Excel spreadsheet techniques along with outlook and notebook are taught. Students will work toward Microsoft Office Certification - IT Academy to become college and career ready. It also teaches them useful employability and leadership skills, developed through a variety of activities, including the opportunity to participate in FBLA, a student leadership organization. Students earning a "B" or better in the class will be eligible to receive college credits from Lower Columbia College.

This course can count for CTE or general elective.

**CREDIT:** 0.5

**TYPE:** Regular

**GRADE:** 9-12

**PREREQUISITE:** BUS110 or instructor approval

---

#### Social Media Marketing I

**CTE230**

This course focuses on the power and philosophy of social media marketing. In this course students will explore and utilize techniques for integrating social media marketing as an integral component of marketing campaigns, serving as tools for building brand awareness and promotion. Instruction in the use of social media within organizations, creation of content, and policy concerns. Employability and leadership skills will be developed through a variety of activities, and the opportunity to participate in FBLA, a student leadership organization.

This course can count for CTE or general elective credit.

**CREDIT:** 0.5

**TYPE:** Regular

**GRADE:** 9-12

---

#### Social Media Marketing II

**CTE231**

This course focuses on the power and philosophy of social media marketing. In this course students will deepen their understanding of social media marketing as an integral component of marketing campaigns, serving as listening and outreach tools for building brand awareness and promoting business by developing and assisting organizations in brand promotion through Social Media Marketing. This class is project oriented and students will be working at times with outside businesses so a high level of professionalism is necessary. Employability and leadership skills will be developed through a variety of activities, and the opportunity to participate in FBLA, a student leadership organization.

This course can count for CTE or general elective.

**CREDIT:** 0.5

**TYPE:** Regular

**GRADE:** 9-12

**PREREQUISITE:** CTE230-Social Media Marketing I

---

---

## Digital Photography I

VOC705

Make photography more fun and creative with digital cameras and imaging techniques. Edit, design, and enhance pictures. Students in this class will learn digital photography techniques, art design elements, image manipulation and photo retouching. Basic camera, computer, and scanner skills (along with the principles and elements of design applied to the photographic image) will be emphasized. Students will develop and maintain an electronic portfolio of their work. Employability and leadership skills will be developed through a variety of activities, and the opportunity to participate in FBLA, a student leadership organization.

This course can count for CTE, fine art, or general elective credit.

**CREDIT:** 0.5

**TYPE:** Regular

**GRADE:** 9-12

---

## Digital Photography II

VOC706

As a continuation of Digital Photography I, students will develop and use photography skills to work on a variety of professional projects including studio lighting, photojournalism, and preparation of images for print/press and web. This class will also explore advanced Photoshop techniques and industry standards. Students will develop an electronic portfolio as an exit project for this employability skill development. Additional employability and leadership skills will be developed through a variety of activities, including the opportunity to participate in FBLA, a student leadership organization.

This course can count for CTE, fine art, or general elective credit.

**CREDIT:** 0.5

**TYPE:** Regular

**GRADE:** 9-12

**PREREQUISITE:** VOC705 - Digital Photography I

---

## Video Production A/B

CTE220/221

Are you interested in learning more about marketing through a variety of strategies and formats? Students will work independently and in groups to create marketing materials in both print and digital formats. They will learn interviewing skills and strategies to assist them in creating videos for marketing and advertising which could lead to students working with clients. Students will build a portfolio and present their products. Employability and leadership skills will be developed through a variety of activities, and the opportunity to participate in FBLA, a student leadership organization.

This course can count for CTE or general elective credit.

**COURSE NOTE:** Materials Fee: \$10

**CREDIT:** 1.0

**TYPE:** Regular

**GRADE:** 10-12

---

## Yearbook A/B

[Promo video to view here!](#)

VOC701/702

This year-long course is designed to give students experience in the fundamentals of photography, graphic design, publishing, journalistic writing techniques, marketing, and advertising. Students are responsible for developing, proofing, and producing the WHS yearbook to be distributed at the end of the school year. This class is unique in that it requires out of class work. Students are responsible to cover school activities extending outside of the school day. Good attendance is expected, and computer skills are helpful. Employability and leadership skills will be developed through a variety of activities, including participation in FBLA, a student leadership organization.

This course can count for CTE, fine art, or general elective credit.

**CREDIT:** 1.0

**TYPE:** Regular

**GRADE:** 10-12

**PREREQUISITE:** Digital Photo I and [Application required](#). See Counseling or Career Center for paper copy.

---

---

## Music Production and Sound Engineering I A/B



CTE222/223

Music Production and Sound Engineering is an “exploration of the music industry” and is open to students with or without prior expertise in music. This course serves as the school’s record label, allowing students to assume the roles of artist, producer, and music marketer. Performance students can compose music in various genres such as country, pop, rock and electronic music. In addition, the student can record their music and play for a live audience. Any student interested in the production of music acquires knowledge of running a sound stage or producing music in a studio using modern technology and software. Students earning a “B” or better in the class will be eligible to receive college credits from Clackamas Community College.

This course can count as art, CTE or general elective.

**CREDIT:** 1.0

**TYPE:** Regular

**GRADE:** 10-12

---

## Music Production and Sound Engineering II A/B



CTE224/225

Music Production and Sound Engineering II takes learning to the next level, expanding on skills developed from Music Production and Sound Engineering I to create new and innovative sounds performed in various settings, including live audiences. Students will work with other classes to make music, acting as the school’s record label, to improve experiences by giving them extensive knowledge of modern technology. Students use the same software professionals use in the music industry, allowing students to assume the roles of artist, producer, and music marketer. Students are encouraged to participate in after-school activities and be part of the Music Production Club. Students earning a “B” or better in the class will be eligible to receive college credits from Clackamas Community College.

This course can count as art, CTE or general elective.

**CREDIT:** 1.0

**TYPE:** Regular

**GRADE:** 10-12

**PREREQUISITE:** Music Production and Sound Engineering I (CTE222/223).

---

## Leadership in Project Management (ASB) A/B

CTE501/502

This class focuses on the skills and attributes needed to be a successful leader. Students will work on various school projects in both leadership and supporting roles, speak before their fellow students, read and report on various topics, and strive to improve their school. Priority given to elected ASB and class officers.

This course can count for general elective or CTE credit.

**CREDIT:** 1.0

**TYPE:** Regular

**GRADE:** 9-12

**OTHER REQUIREMENTS:** Elected position or instructor permission

---

## Personal Finance A/B



BUS301/302

This is an engaging and exciting course where you will learn practical applications of basic financing. First semester covers banking services, credit, employment basics, and income taxes. Second semester covers independent living, preparing a budget, and automobile ownership. Great employability and leadership skills are taught throughout the course through online activities, computer applications and the opportunity to participate in FBLA, a student leadership organization. Students earning a “B” or better in the class will be eligible to receive college credits from Clark College. This is a dual credit course so students earning a “B” or better in both semesters of this class will be eligible to receive college credits from Clark College.

This course can count for CTE, 3rd year Math, or general elective.

**COURSE NOTE:** Students that earn a C Algebra I A & B will be best prepared to take this course. While this course meets 3rd year math, it does not meet the minimum Algebra II math requirement for college admissions.

**CREDIT:** 1.0

**TYPE:** Regular

**GRADE:** 11-12

**PREREQUISITE:** Algebra 1 A/B.

---

---

## Work Site Learning



WSLvaries

Work Site Learning is an exciting program that affords students the opportunity to connect the knowledge and skills obtained in the classroom to those needed in the work environment. Students can earn .5 credits for 180 reported paid work or internship hours. To qualify for this class, you must fill out an application, have excellent attendance, be passing all classes, be at least 16 years of age (junior or senior status), have taken at least one CTE class in the same pathway that your job or internship is in, and have the ability to travel to and from your job or internship site independently.

This course can count for general elective or CTE credit.

**COURSE NOTE:** .Students earning a “B” or better in the class will be eligible to receive college credits from Clark College. Instructor approval only. Must complete the program application before registering for the class.

**CREDIT:** 0.5

**TYPE:** Regular

**GRADE:** 11-12

---

## CTE-Family & Consumer Sciences

### Intro to Culinary Arts



HFL113

This engaging class is an introduction to the culinary arts where students will be exposed to the art or preparation, cooking and presentation of food. Students will learn principles, techniques, careers opportunities, safe food handling, and business opportunities within the culinary arts industry. Practical and lab experiences in food and nutrition with a strong emphasis of “hands on”. The use of technology will be an integral part of the course. This course satisfies the prerequisite in the pathway of culinary arts and cannot be repeated. This is a dual credit course so students earning a “B” or better in both semesters of this class will be eligible to receive college credits from Clark College.

This course can count for CTE or general elective credit.

**COURSE NOTES:** This course cannot be repeated for credit and is a prerequisite for the culinary pathway.

**CREDIT:** 0.5

**TYPE:** Regular

**GRADE:** 9-12

---

### Baking and Pastry Arts I



HFL116

This exciting course is the study and application of the fundamentals of baking and pastry. Learn why things work together using ingredients, methods, and proper measurement techniques. Topics include baking terminology, tool and equipment use, formula conversions, functions of ingredients, and the use of proper flours. This course has been developed to provide culinary students with knowledge and skills necessary to produce quality baked goods. This is a course designed to teach basic baking skills. This is a dual credit course so students earning a “B” or better in both semesters of this class will be eligible to receive college credits from Clark College.

This course can be taken for a Fine Arts, CTE or general elective credit.

**COURSE NOTES:** This course cannot be repeated for credit.

**CREDIT:** 0.5

**TYPE:** Regular

**GRADE:** 9-12

---

### Advanced Baking & Pastry Arts I

HFL115

This exciting course builds on the fundamentals of baking and pastry. It puts them to practice in a live learning opportunity. This course will help students develop leadership and customer service skills as well as strengthen their knowledge and skills surrounding the production of quality baked goods.

This course can be taken for a Fine Arts, CTE or general elective credit.

**COURSE NOTES:** This course cannot be repeated for credit.

**CREDIT:** 0.5

**TYPE:** Regular

**GRADE:** 9-12



## **Advanced Culinary Arts A/B**



**HFL118/119**

In this course, you will learn the back of the house skills, techniques, methods, terminology, and practices required for a career in the industry. Learn about the kitchen brigade, food safety and sanitation, mise en place and cooking skills, proper plate presentation, kitchen safety and kitchen equipment maintenance, quantity food measurement and monitoring, business management and cost analysis, as well as exceptional customer service skills. Students who take this course are placed in leadership roles, leading their peers, and producing results. One way they showcase their skills is through working on the Panthers' Shoug Shack Food Truck as a mobile learning lab. Students will work in collaboration with a number of industry partners while enrolled in this exciting course. Students have a number of opportunities to volunteer their skills outside as well as during the school day. This is a dual credit course so students earning a "B" or better in both semesters of this class will be eligible to receive college credits from Clark College.

Course can be used as a CTE or general elective credit.

**COURSE NOTES:** This course cannot be repeated for credit.

**CREDIT:** 1.0

**TYPE:** Regular

**GRADE:** 10-12

**PREREQUISITE:** HFL 113 (Intro to Culinary Arts)

---

## **Child Development & Education A/B**



**HFL120/121**

In Child Development and Education students learn about and develop skills to prepare them for careers with children. Students learn developmental stages (birth through school age), children's social, emotional, physical and intellectual development, study theories of development, the health, wellness and safety of children and the professional responsibilities related to work with children. Students also explore how children learn, through play, how a child's nutrition factors into their growth, development and overall well being. Child learning styles are studied. During the 4th quarter, students will have the opportunity to engage in live learning labs with school-age children at a neighboring elementary school while developing age-appropriate lessons to reach school-age children. Students in this course will have the opportunity to gain college credit that will lead to a stackable certification needed to begin their career working with children. This course is a prerequisite for Careers in Education. This course can count for CTE or general elective credit. This is a dual credit course so students earning a "B" or better in both semesters of this class will be eligible to receive college credits from Clark College.

This course can count for CTE or general elective credit.

**CREDIT:** 1.0

**TYPE:** Regular

**GRADE:** 10-12

**PREREQUISITE:** HFL 114-Family Health

---

## **CTE-Skilled & Technical**

### **Metals Manufacturing & Technology I**

**VOC106**

In this course, you will be introduced to safety practices and tools like arc and oxyacetylene welding and soldering; materials like sheet metal and bench metal; as well as machines used in manufacturing like Computer Aided Drafting (CAD). Some manufacturing processes you will learn include automation, forging, and heat-treating. You will learn important communication and employability skills needed for the workplace. Exploring careers, theories, methods, and techniques used in manufacturing fields will be the focus of this course.

This course can count for CTE or general elective credit.

**COURSE NOTES:** This course cannot be repeated for credit.

**CREDIT:** 0.5

**TYPE:** Regular

**GRADE:** 9-12

---

### **Metals Manufacturing & Technology II**



**VOC107**

Join us in this course to advance your learning in areas such as precision measuring, precision machine lathe work, milling machine work, CNC (Computer Numeric Controlled) Plasma cutting, arc welding, TIG welding, MIG



welding, inert gas welding, oxy-acetylene welding and cutting, brazing, silver soldering and forging. Upon completion of course requirements students may work on individualized projects of their selection. Advanced students will assist in mentoring other students occasionally throughout the semester. Career learning opportunities in Manufacturing fields are also provided. This is a dual credit course so students who earn a "B" or better in both Metals Tech 1 and 2, can earn Clark College certification or Lower Columbia College (LCC) credits. A welding certification through Clark College is also available for qualifying students.

This course counts for CTE or general elective.

**CREDIT:** 0.5                      **TYPE:** Regular                      **GRADE:** 9-12  
**PREREQUISITE:** VOC106- Metals I    passed with 'C' grade or better

---

## Basic Construction I



**VOC116**

This course is an introduction to residential construction trades. You will learn construction methods through building various projects that may include scale model homes, recreational cabins, dog houses and even garages. In this class you will be introduced to hand and power tools of the trade, blueprint reading, building from blueprints, and designing your own building. This course emphasizes safe working practices, teamwork, understanding professional framing practices and career opportunities and will focus on the theories, methods and techniques involved in work within the building trades. This is a dual credit course so students earning a "B" or better in both semesters of this class will be eligible to receive college credits from Lower Columbia College (LCC).

This course can count for CTE or general elective credit.

**COURSE NOTES:** This course cannot be repeated for credit.

**CREDIT:** 0.5                      **TYPE:** Regular                      **GRADE:** 9-12

---

## Basic Construction II

**VOC117**

This course is designed to deepen your learning in the realm of residential construction trades. You will advance your skills by creating designs using CAD software, creating work orders and job estimations and building projects using advanced tools such as a CNC Router. You will also have the opportunity to learn about post-secondary career opportunities including apprenticeship programs within trades and possibly even visit some. You'll be exposed to projects using finished carpentry skills. This course continues the emphasis of safe working practices, teamwork, and career opportunities and will focus on the theories, methods and techniques involved in work within the building trades.

This course can count for CTE or general elective credit.

**CREDIT:** 0.5                      **TYPE:** Regular                      **GRADE:** 9-12  
**PREREQUISITE:** VOC116 - Basic Construction I

---

## Small Engine Repair I



**VOC300**

You will receive instruction in safe working practices and the proper use of basic tools and materials related to engines. The focus of this class will be on Applied Mechanics.

This course can count for CTE or general elective credit.

**COURSE NOTES:** This course cannot be repeated for credit.

**CREDIT:** 0.5                      **TYPE:** Regular                      **GRADE:** 9-12

---

**VOC301**

---

## Small Engine Repair II



This course is designed as a continuation of the foundations you learned in Small Engines 1. You will receive instruction to advance your knowledge and skills using safe working practices as well as the proper use of tools, equipment and materials related to engines. You will work with customers as they bring in small engine machines such as lawn mowers, provide service documents and explain repairs made in layman's terms as well as industry terms. You will also have the opportunity to work towards an industry certification. The focus of this class will be on engine servicing and customer service.

This course can count for CTE or general elective credit.

**CREDIT:** 0.5

**TYPE:** Regular

**GRADE:** 9-12

**PREREQUISITE:** VOC 300-Small Engine Repair I

---

## Fine Arts Woodworking I

**VOC502**

Students gain the opportunity to develop their skills in a specialized area of woodworking such as cabinet making, wood turning, bandsaw boxes, evolution of a specific furniture design, period design, and more. It will prepare you to apply technical knowledge and skills to lay out, shape and design as well as assembly and production using a variety of practices and hand/power tools. This class includes safe practices required to use the machine and hand tools needed for your designed project. This class can be taken up to two semesters depending upon individual skill levels.

This course can count for CTE, fine art, or general elective.

**COURSE NOTES:** This course cannot be repeated for credit.

**CREDIT:** 0.5

**TYPE:** Regular

**GRADE:** 9-12

---

## Fine Arts Woodworking II

**VOC503**

Students continue to gain the opportunity to develop their skills in a specialized area of woodworking such as cabinet making, wood turning, bandsaw boxes, evolution of a specific furniture design, period design, and more. Students are prepared to apply technical knowledge and skills to lay out, shape and design as well as assembly and production using a variety of practices and hand/power tools. This class includes safe practices required to use the machine and hand tools needed for your designed project. This class can be taken up to two semesters depending upon individual skill levels.

This course can count for CTE, fine art, or general elective.

**COURSE NOTES:** This course cannot be repeated for credit.

**CREDIT:** 0.5

**TYPE:** Regular

**GRADE:** 9-12

**PREREQUISITE:** VOC502 - Fine Arts Woodworking I

---

## Advanced Fine Arts Woodworking I

**VOC504**

This course is designed to advance the serious woodworking student's opportunity to develop their skills in a specialized area of woodworking which includes collaborating with customers on project ideas, creating designs using CAD software, presentation of designs, development of work orders and job estimations while producing products using traditional tools as well as advanced tools such as a CNC Router. This class includes safe practices required to use the machine and hand tools needed for your designed project. This class can be taken up to two semesters depending upon individual skill levels. An optional fine arts credit is offered for students who place an emphasis on a creative project through the design and completion of individual pieces of work.

This course can count for CTE, fine art, or general elective credit.

**COURSE NOTES:** This course cannot be repeated for credit.

**CREDIT:** 0.5

**TYPE:** Regular

**GRADE:** 10-12

**PREREQUISITE:** VOC503 - Fine Arts Woodworking II

---

---

## Advanced Fine Arts Woodworking II

VOC505

As a continuation of Advanced Fine Arts Woodworking I, this course is designed to advance the serious woodworking student's opportunity to develop their skills in a specialized area of woodworking which includes collaborating with customers on project ideas, creating designs using CAD software, presentation of designs, development of work orders and job estimations while producing products using traditional tools as well as advanced tools such as a CNC Router. This class includes safe practices required to use the machine and hand tools needed for your designed project. This class can be taken up to two semesters depending upon individual skill levels. An optional fine arts credit is offered for students who place an emphasis on a creative project through the design and completion of individual pieces of work.

This course can count for CTE, fine art, or general elective.

**COURSE NOTES:** This course cannot be repeated for credit.

**CREDIT:** 0.5

**TYPE:** Regular

**GRADE:** 10-12

**PREREQUISITE:** VOC504 - Advanced Fine Arts Woodworking I

---

## Metal Crafts & Production I

VOC620

This project-based course provides experience in the use of basic tools and instruction in methods of employing materials, forms and processes, creatively. Projects include everything from enamel beads and whimsical yard art to practical structures for hanging plants and flowers. Students will explore the use of other materials in the construction of useful objects such as jewelry and sculpture using various metal forms and processes. Students are introduced to safety standards and a variety of precision production careers and skills.

This course can count for CTE, fine art, or general elective credit.

**COURSE NOTES:** This course cannot be repeated for credit.

**CREDIT:** 0.5

**TYPE:** Regular

**GRADE:** 9-12

---

## Metal Crafts & Production II

VOC621

Take your knowledge from Metal Crafts 1 to the next level in this fun, project-based class that transforms metal through various forms and processes. Expand your tool usage and materials experience to create projects using CAD (computer Aided Drafting) software and that includes everything from sculptures, signs, CNC Plasma cutting pattern making to practical structures. In addition, students will explore the use of materials in the construction of useful objects such as jewelry and sculpture. Safety standards and a variety of precision production careers and skills will be explored. This course can count for CTE, fine art, or general elective credit.

**CREDIT:** 0.5

**TYPE:** Regular

**GRADE:** 9-12

**PREREQUISITE:** VOC620 - Metal Crafts & Production I

---

## Applied Mathematics A/B



VOC401/402

Applied mathematics is a one-year course that bridges the gap between abstract mathematical concepts and real-world applications. It integrates algebra, geometry and trigonometry while providing ongoing opportunities in critical thinking. Applied Mathematics employs an interactive, workplace-centered approach to teaching the foundations of algebra and geometry. The program features hands-on math labs and cooperative group activities, giving students the opportunity to experience mathematical concepts. It answers the questions, "Why do I have to learn this?" by offering connections and applications to everyday life and emphasizing the use of math in the workplace. This is a dual credit course so students earning a "B" or better in both semesters of this class will be eligible to receive college credits from Lower Columbia College (LCC) or Clark College.

This course can count for CTE, 3rd year Math, or general elective.

**PREREQUISITE:** MAT520 - Algebra I A or MAT521 - Algebra I B

**CREDIT:** 1.0

**TYPE:** Regular

**GRADE:** 11-12

---

---

## Video Production

**CTE220/221**

Are you interested in learning more about marketing through a variety of strategies and formats? Students will work independently and in groups to create marketing materials in both print and digital formats. They will learn interviewing skills and strategies to assist them in creating videos for marketing and advertising which could lead to students working with clients. Students will build a portfolio and present their products. Employability and leadership skills will be developed through a variety of activities, and the opportunity to participate in FBLA, a student leadership organization.

This course can count for CTE or general elective credit.

**CREDIT:** 1.0

**TYPE:** Regular

**GRADE:** 10-12

---

## CTE-Science, Technology, Engineering & Math

### Engineering A/B

**CTE114/115**

This course is designed to inspire students of all backgrounds to explore the breadth of engineering-related career opportunities. Throughout the course, students explore global engineering challenges and sustainability goals, the impact of engineering, and the variety of career paths available to them. Students will understand the various disciplines within the engineering field and how they apply to today's world and future career opportunities. Students will solve problems in different ways including process solutions, mechanical solutions, electronic solutions, and infrastructure solutions and use a variety of industry tools such as geographical information systems, computer-aided design, and electrical circuit simulation.

This course can count for CTE, or 3rd year Lab Science or general elective.

**CREDIT:** 1.0

**TYPE:** Regular

**GRADE:** 9-12

---

### CyberSecurity 1

**CTE120**

Students will identify cybersecurity threats and protect against them, detect intrusions and respond to attacks. The course will guide students to begin examining personal, digital footprints and better defend your own personal data. Learn how organizations protect themselves in today's world. Whether seeking a career in the emerging field of cybersecurity or learning to defend your own personal data or a company's data, students in this Cybersecurity class will establish an ethical code of conduct while learning to defend data in today's complex cyberworld.

This course can count for CTE or general elective.

**CREDIT:** .5

**TYPE:** Regular

**GRADE:** 10-12

---

### CyberSecurity 2

**CTE121**

Students will expand on their ability to determine cybersecurity threats and protect against them. Students will investigate issues, detect intrusions and respond to attacks. The course will enhance students' knowledge from CyberSecurity 1 examining personal and digital footprints to better defend personal data in today's complex cyberworld.

This course can count for CTE or general elective.

**CREDIT:** .5

**TYPE:** Regular

**GRADE:** 10-12

---

### Applied Mathematics A/B



**VOC401/402**

This one-year course that bridges the gap between abstract mathematical concepts and real-world applications. It integrates algebra, geometry and trigonometry while providing ongoing opportunities in critical thinking. Applied Mathematics employs an interactive, workplace-centered approach to teaching the foundations of algebra and geometry. The program features hands-on math labs and cooperative group activities, giving students the opportunity to experience mathematical concepts. It answers the questions, "Why do I have to learn this?" by offering connections and applications to everyday life and emphasizing the use of math in the workplace. This is a dual credit course so students earning a "B" or better in both semesters of this class will be eligible to receive college credits from Lower Columbia College (LCC). This course can count for CTE, 3rd year Math, or general elective.

**COURSE NOTE:** This course can count for CTE, 3rd year Math, or general elective.

**CREDIT:** 1.0

**TYPE:** Regular

**GRADE:** 11-12

**PREREQUISITE:** MAT520 - Algebra I A or MAT521 - Algebra I B

---

## AP Computer Science Principles



**MAT150/151**

The AP Computer Science Principles course is designed to be equivalent to a first-semester introductory college computing course. In this course, students will develop computational thinking vital for success across all disciplines, such as using computational tools to analyze and study data and working with large data sets to analyze, visualize, and draw conclusions from trends. The course is unique in its focus on fostering student creativity. Students are encouraged to apply creative processes when developing computational artifacts and to think creatively while using computer software and other technology to explore questions that interest them. They will also develop effective communication and collaboration skills, working individually and collaboratively to solve problems, and discussing and writing about the importance of these problems and the impacts to their community, society, and the world.

**COURSE NOTE:** You are registering for an AP course. Parent and student signatures will be required.: All students are encouraged to take the exam. Exam Fee: \$84

This course can count for CTE, 3rd year Math, or general elective.

**CREDIT:** 1.0

**TYPE:** Advanced Placement

**GRADE:** 9-12

**PREREQUISITE:** Successfully completed a first-year high school algebra course (Algebra I)

---

## CTE-Health Sciences

---

### Intro to Medical Careers & Terminology A/B



**CTE100/101**

This introductory course in health sciences provides an overview and exploration of a variety of health care careers in each of the five Health Care Career Pathways. For each career they study, students examine the main tasks and challenges of professionals in that career, the treatments they administer, and the interaction those professionals have with other professionals and their patients. This class includes beginning anatomy and physiology, medical terminology, medical ethics, diseases, and disorders. This is a dual credit course so students earning a "B" or better in both Intro to Medical Careers & Terminology A & B classes will be eligible to receive college credits from Clark College.

This course can count for lab science, CTE or general elective.

**CREDIT:** 1.0

**TYPE:** Regular

**GRADE:** 10-12

---

### BioMedical Anatomy & Physiology A & B



**CTE110/111**

The BioMedical Anatomy and Physiology course is designed to engage students interested in Health Sciences in the study of basic human physiology and the care and maintenance required to support the complex system. Students will examine the interactions of human body systems as they explore identity, communication, power, movement, protection, and homeostasis. Students design experiments, investigate the structures and functions of the human body, and use data to monitor body functions such as muscle movement, reflex and voluntary action, and respiration. Exploring science in action, students build organs and tissues on a skeletal manikin, work through interesting real world cases and often play the role of biomedical professionals to solve medical mysteries. Employability and leadership skills will be developed through a variety of activities, and the opportunity to participate in HOSA, a student leadership organization. This is a dual credit course so students earning a "B" or better in both BioMedical Body Systems A & B classes will be eligible to receive college credits from Clark College.

This course can count for CTE, Lab Science or general elective.

**CREDIT:** 1.0

**TYPE:** Regular

**GRADE:** 10-12

**PREREQUISITES:** Passing grades in Intro to Medical Careers & Terminology A & B and Biology A & B

**COREQUISITES:** If you take this course, you must also take CTE111-BioMedical Anatomy & Physiology B.

## English

### Freshman English A/B

**ENG501/502**

Guided by essential questions, students will read and analyze poetry, short stories, plays, and various non-fiction texts to evaluate the effects of author choices and purpose(s). Students will learn to intentionally use standard English conventions of usage and mechanics to develop cohesive paragraphs and essays. There will be a focus on providing text-based evidence and insightful commentary to support arguments and interpretations. Students will learn how to participate effectively in a range of collaborative discussions.

**CREDIT:** 1.0

**TYPE:** Regular

**GRADE:** 9

### Pre-AP Freshman English A/B

**ENG503/504**

Pre-AP English focuses on close reading, analytical writing, and language skills that have immediate relevance for students and that will be essential for their future coursework. Texts take center stage in the Pre-AP English classroom, where students engage in close, critical reading of a wide range of literary and nonfiction works. The course trains the reader to observe the small details within a text to arrive at a deeper understanding of the whole. It also trains the writer to focus on crafting complex sentences as the foundation for writing to facilitate complex thinking and to communicate ideas clearly. Pre-AP courses are designed to prepare students for AP courses and other advanced courses.

**CREDIT:** 1.0

**TYPE:** Honors

**GRADE:** 9

### Sophomore English A/B

**ENG601/602**

This course will review grammar, essay writing and work toward vocabulary improvement. Students will trace the influence of society on the individual through reading and analyzing short stories, plays, including Shakespeare, and ancient world literature.

**CREDIT:** 1.0

**TYPE:** Regular

**GRADE:** 10

### Pre-AP Sophomore English A/B

**ENG603/604**

Students develop a vigilant awareness of how the poet, playwright, novelist, and writer of nonfiction alike can masterfully manipulate language to serve their unique purposes. As writers, students compose more nuanced essays without losing sight of the importance of well-crafted sentences and a sense of cohesion. Pre-AP courses are designed to prepare students for AP courses and other advanced courses.

**CREDIT:** 1.0

**TYPE:** Honors

**GRADE:** 10

---

**Junior English A/B****ENG701/702**

This course focuses on American literature from pre-1600 to modern times and the development of writing styles and approaches. Successful reading strategies and improving six-trait writing skills will be included. A strong emphasis will be on the relationship between U.S. History and American literature. A research paper that includes six complete double-spaced pages with a title page and works cited page, using the MLA format, will be required.

**CREDIT:** 1.0**TYPE:** Regular**GRADE:** 11

---

**Drama Literature****ENG716**

This course focuses on literary analysis through reading and analyzing plays. The course will examine plays from a variety of time periods and styles, and then explore them through discussion, projects, and writing.

This course can count as Junior English, fine art, or general elective. If choosing as english, select as an alternate after choosing Junior English.

**CREDIT:** 0.5**TYPE:** Regular**GRADE:** 10-12

---

**Film as Literature****ENG715**

This course brings the skills of story analysis to the art of film. We will watch movies from a variety of time periods and genres and then explore them through discussion, projects, and writing. Students should be able to write proficiently and speak in front of peers.

This course can count as Junior English, fine art, or general elective. If choosing as english, select as an alternate after choosing Junior English.

**CREDIT:** 0.5**TYPE:** Regular**GRADE:** 10-12

---

**Mythology from Around the World****ENG714**

Join us on an exciting journey through the fascinating realm of mythology! In this class, students will delve into the rich tapestry of myths and legends from various cultures across the globe. From the ancient tales of Greek gods to the vibrant stories of Indigenous peoples, this course will explore how mythology reflects different societies' values, beliefs, and traditions. Through engaging discussions, creative projects, and multimedia presentations, students will learn about the significance of mythological figures, the role of storytelling in cultural heritage, and the universal themes that connect us all. Each week will focus on a different region, allowing students to compare and contrast mythological narratives and understand their impact on literature, art, and modern culture. Prepare to unlock the mysteries of the past and discover how these timeless stories continue to resonate today! Whether you're a mythology enthusiast or just curious about the world, this class promises to ignite your imagination and inspire a deeper understanding of humanity's shared history. Come explore the myths that shape our world!

This course can count as a general elective course. Could be used as an English class in special circumstances.

**CREDIT:** 0.5**TYPE:** Regular**GRADE:** 10-12

---

**AP Language and Composition A/B****ENG719/720**

Advanced Placement Language and Composition is a college level course in which students will read and analyze essays, speeches, biographies, memoirs, editorial commentaries, and legal and historical documents from all time periods and cultures. Students will be introduced to the language, rhetoric, syntax, diction and style necessary to correctly write Advanced Placement exams. Students should expect to participate in study sessions outside the school day. This course prepares students to take the AP exam in May. Students must complete a research paper and creative writing assignments after the exam in May.

**COURSE NOTE:** You are registering for an AP course. Parent and student signatures will be required. All students are encouraged to take the exam. Exam Fee: \$84

**CREDIT:** 1.0**TYPE:** Advanced Placement**GRADE:** 11

---

**Senior English A/B****ENG801/802**

This course will include English literature, the study of contemporary literature, science fiction/fantasy, Job Acquisition Skills (JAS), and composition. Its purpose will be to study the development of literature and thought, to provide practice in writing essays, and to improve students' reading ability through concentrated reading in all the above areas. The scholarly paper and project will be approved in the first semester. The Senior Project paper will be completed first semester, while the presentation and product will be completed during second semester.

**CREDIT:** 1.0

**TYPE:** Regular

---

### **AP Literature and Composition A/B**

**ENG717/718**

Advanced Placement Literature and Composition is a college level course in which students will continue to read and analyze fiction from the 1800's through modern times. This course is for the student who seeks a challenge. Global ideas and comparative thought through world literature and history, short story analysis, and poetry will be emphasized. Students will write extensively and complete AP-style practice tests. Students should also expect to participate in study sessions outside the school day. This course prepares students to take the AP exam in May.

**COURSE NOTE:** You are registering for an AP course. Parent and student signatures will be required. All students are encouraged to take the exam. Exam Fee: \$84

**CREDIT:** 1.0

**TYPE:** Advanced Placement

**GRADE:** 12

---

## **Fine Arts: Visual and Performing Arts**

### **Band**

#### **Concert Band A/B**

**FAR517/518**

Concert band is for new and returning high school students in grades 9-12 who play or wish to learn woodwind and brass instruments. Students will develop the necessary course skills to participate through ensemble teaching, peer coaching, and personal practice. In addition, students will improve their technique and music by progressing their skill level through daily music fundamentals and personal choices. Incoming students interested in participating at a higher level of earning a letter in the band can audition for the wind ensemble. Students are not required to play football or basketball games but can have the option if desired. Concerts, festivals, and class participation are mandatory.

This course can count as fine art or general elective.

**COURSE NOTE:** Students can rent available school instruments for \$200 per year. An instrument is required.

**CREDIT:** 1.0

**TYPE:** Regular

**GRADE:** 9-12

---

#### **Jazz Band A/B**

**XBD101/XBD102**

Jazz Ensemble is for students currently enrolled in a school music ensemble or for students not able to take the course school during the school day (e.g., Running Start) with teacher approval of a verifiable scheduling conflict. New students must audition for the instructor for placement purposes. The current jazz ensemble students may enroll without an audition. The course is for saxophone, trombone, trumpet, drum set, auxiliary percussion, vibes, bass guitar, and piano students. Concerts, competitions, festivals, and in-class participation are required. The course meets during a zero period.

This course can count as fine art or general elective.

**COURSE NOTE:** Students can rent available school instruments for \$200 per year. An instrument is required.

**CREDIT:** 1.0

**TYPE:** Regular

**GRADE:** 9-12

**PREREQUISITE:** Audition Req: Prepared piece and optional improv.

---

#### **Percussion Ensemble A/B**

**FAR540/541**



Students of all backgrounds and abilities are welcome to join the percussion ensemble. The course design helps foster proficiency in music and develop a fundamental grasp of percussion techniques using various instruments. In addition, the course introduces the 40 essential percussion rudiments that teach performance abilities. Students must be self-disciplined and work individually and collaboratively. Attending concerts, festivals, football/basketball pep rallies, and class events is mandatory.

This course can count as fine art or general elective

**Course Note:** Students will need to purchase appropriate drumsticks, marimba mallets, and timpani mallets.

This course can count as fine art or general elective.

**CREDIT:** 1.0

**TYPE:** Regular

**GRADE:** 9-12

---

### Wind Ensemble A/B

**FAR542/543**

The wind ensemble is for students with prior experience with instrumental music. The wind ensemble group focuses on advanced theoretical concepts, musicality, and advanced technical skills. This class requires exceptional self-discipline and a high level of instrumental ability and is for students who want to pursue excellence in music. Concerts, festivals, and football/basketball pep rallies are all required. (Pep band involvement can be optional if a student plays a school sport during the fall or winter season). Incoming students must audition with the performance of all 12 major scales and chromatic by memory or an adequately prepared solo piece recommended by a former band director or private instructor of the instrument.

This course can count as fine art or general elective.

**Course Note:** Students can rent available school instruments for \$200 per year. An instrument is required.

This course can count as fine art or general elective.

**CREDIT:** 1.0

**TYPE:** Regular

**GRADE:** 10-12

**PREREQUISITE:** Audition Req: Prepared solo, three scales by memory, and chromatic scale

---

### Music Production and Sound Engineering I A/B



**CTE222/223**

Music Production and Sound Engineering is an “exploration of the music industry” and is open to students with or without prior expertise in music. This course serves as the school’s record label, allowing students to assume the roles of artist, producer, and music marketer. Performance students can compose music in various genres such as country, pop, rock and electronic music. In addition, the student can record their music and play for a live audience. Any student interested in the production of music acquires knowledge of running a sound stage or producing music in a studio using modern technology and software. Students earning a “B” or better in the class will be eligible to receive college credits from Clackamas Community College.

This course can count as art, CTE or general elective.

**CREDIT:** 1.0

**TYPE:** Regular

**GRADE:** 10-12

---

### Music Production and Sound Engineering II A/B



**CTE224/225**

Music Production and Sound Engineering II takes learning to the next level, expanding on skills developed from Music Production and Sound Engineering I to create new and innovative sounds performed in various settings, including live audiences. Students will work with other classes to make music, acting as the school’s record label, to improve experiences by giving them extensive knowledge of modern technology. Students use the same software professionals use in the music industry, allowing students to assume the roles of artist, producer, and music marketer. Students are encouraged to participate in after-school activities and be part of the Music Production Club. Students earning a “B” or better in the class will be eligible to receive college credits from Clackamas Community College.

This course can count as art, CTE or general elective.

**CREDIT:** 1.0

**TYPE:** Regular

**GRADE:** 11-12

**PREREQUISITE:** Music Production and Sound Engineering I (CTE222/223).

---

## Choir

### Concert Choir A/B

**FAR505/506**

This ensemble is for all vocalists. This ensemble is the entry-level vocal class at WHS. Students will learn techniques and skills necessary to advance them to Jazz or Chamber their following year. Concerts, festivals and in class participation is required.

This course can count as fine art or general elective.

**CREDIT:** 0.5

**TYPE:** Regular

**GRADE:** 9-12

### Jazz Choir A/B

**FAR520/521**

This course is for students who have already been or are currently enrolled in a choir. This course will be based on teacher recommendation. Preference will be given to students with superior self-discipline. Concerts, competitions, festivals, and class participation are required. This course is only offered as a zero period (7:00-7:50 a.m.).

This course can count as fine art or general elective.

**CREDIT:** 1.0

**TYPE:** Regular

**GRADE:** 10-12

**PREREQUISITE:** Audition required and previous enrollment in FAR505/506-Concert Choir

### Chamber Choir A/B

**FAR508/509**

This course is for musicians with experience in vocal music at the high school level. This ensemble focuses on advanced theory concepts, history, and advanced singing techniques. This course will be based on teacher recommendation and requires superior self-discipline and a high level of instrumental ability. At-home practice is mandatory. This ensemble is designed for students wishing to explore excellence in music. Concerts, festivals, community performances required.

This course can count as fine art or general elective.

**CREDIT:** 1.0

**TYPE:** Regular

**GRADE:** 10-12

**PREREQUISITE:** Audition required and FAR505

## Drama

### Scene Design

**FAR604**

Have you ever wondered what goes on behind the scenes of a play? Scene design is a one semester course that explores the principles and elements of scenic design through a combination of projects, classroom learning, and hands-on tasks. Though the full scope and sequence of the course differs slightly based on the mainstage show that is currently in production, the class will feature student created projects covering lights and sound design, scenic painting, poster development, and construction elements

This course can count for fine art or general elective.

**CREDIT:** 0.5

**TYPE:** Regular

**GRADE:** 9-12

### Drama Literature

**ENG716**

This course focuses on literary analysis through reading and analyzing plays. The course will examine plays from a variety of time periods and styles, and then explore them through discussion, projects, and writing.

This course can count as English 11, fine art, or general elective.

**CREDIT:** 0.5

**TYPE:** Regular

**GRADE:** 10-12

### Film as Literature

**ENG715**

This course brings the skills of story analysis to the art of film. We will watch movies from a variety of time periods and genres and then explore them through discussion, projects, and writing. Students should be able to write proficiently and speak in front of peers.

This course can count as English 11, fine art, or general elective.

**CREDIT:** 0.5

**TYPE:** Regular

**GRADE:** 10-12

---

### **Introduction to Theater**

**FAR605**

This course explores several elements of the theatre, from history to stagecraft to performing. Students will have the opportunity to gain a general knowledge of drama while participating in hands-on projects, games, and acting exercises. This is a nonthreatening, first exposure to drama.

This course can count for fine art or general elective.

**CREDIT:** 0.5

**TYPE:** Regular

**GRADE:** 9-12

---

### **Acting A/B**

**FAR601/FAR602**

This course focuses on the skills and techniques involved in the art of acting. Students will be performing and honing their abilities through a variety of exercises and production based assignments. Second semester is not a repeat of the first, but rather a continuation of the skill building and production experience.

This course can count as fine art or general elective.

**CREDIT:** 1.0

**TYPE:** Regular

**GRADE:** 10-12

**PREREQUISITE:** FAR 605-

Intro to Theater

---

### **Advanced Acting A/B**

**FAR606/607**

This course focuses on the skills and techniques involved in the art of acting. Students will be performing and honing their abilities through a variety of exercises and production based assignments. Second semester is not a repeat of the first, but rather a continuation of the skill building and production experience.

This course can count as fine art or general elective.

**CREDIT:** 1.0

**TYPE:** Regular

**GRADE:** 10-12

**PREREQUISITE:** Acting A or Instructor Approval

---

### **Panther Players/Advanced Acting A/B**

**FAR720/721**

This course focuses on the skills and techniques involved in the art of acting. Students will be performing and honing their abilities through a variety of exercises and production-based assignments. Second semester is not a repeat of the first, but rather a continuation of the skill building and production experience.

This course can count as fine art or general elective.

**CREDIT:** 1.0

**TYPE:** Regular

**GRADE:** 10-12

**PREREQUISITE:** FAR 601/602-Acting or Instructor Approval

---

## **Visual Art**

### **Ceramics I**

**FAR108**

In this course, students will study hand-building techniques such as coil, segmented coil, slab, and pinch methods.

Beginning sculpture techniques using additive and subtractive techniques will also be introduced. All projects will demonstrate success in a variety of standards and will provide an opportunity to refine and improve results with the goal of exceeding standards as we explore the artistic and creative process

This course can count as fine art or general elective.

**COURSE NOTE:** Fee: \$9

**CREDIT:** 0.5

**TYPE:** Regular

**GRADE:** 9-12

---

## Ceramics II



**FAR109**

This course provides more in depth work for the student who wishes to continue with clay as a functional and decorative art form. This course strongly focuses on sculptural and decorative techniques. This class will introduce the pottery wheel and expand upon the tools and techniques learned in ceramics 1. Proficiency expectations are raised to reflect the mastery in the basic techniques learned in ceramics 1

This course can count as fine art or general elective. *EWU ART 225 credit in progress.*

**COURSE NOTE:** Fee: \$9

**CREDIT:** 0.5

**TYPE:** Regular

**GRADE:** 9-12

**PREREQUISITE:** FAR108-

Ceramics I

---

## Ceramics III



**FAR110**

This course provides more in depth work for the student who wishes to continue with clay as a functional and decorative art form. This course empowers the students to direct their work and to focus their aesthetic. *EWU ART 225 credit in progress.*

This course can count for fine art or general elective.

**COURSE NOTE:** Fee: \$9

**CREDIT:** 0.5

**TYPE:** Regular

**GRADE:** 10-12

**PREREQUISITE:** FAR-109

Ceramics II

---

## Ceramics IV

**FAR111**

This course will focus on differentiating aesthetics in the student's work and personal style.

This course can count for fine art or general elective.

**COURSE NOTE:** Fee: \$10

**CREDIT:** 0.5

**TYPE:** Regular

**GRADE:** 10-12

**PREREQUISITE:** FAR-110

Ceramics III

---

## Introduction to Art

**FAR113**

In this course, students will learn to draw, and upon completion of the course, students will be able to draw anything they can see with reasonable accuracy. Graphite pencil, pen and ink, watercolor and acrylic paint, and oil pastel will be presented along with the art history. All projects will demonstrate success in a variety of standards and will provide an opportunity to refine and improve results with the goal of exceeding standards as we explore the artistic and creative process.

This course can count for fine art or general elective.

**CREDIT:** 0.5

**TYPE:** Regular

**GRADE:** 9-12

---

## Intermediate Art



**FAR114**

This course is for learning advanced drawing skills. A variety of drawing tools, techniques and materials will be explored. Quality standards should be striving to excel beyond our prior levels and to meet and exceed standards for the class with emphasis on synthesis of knowledge and application of skills. *EWU DESN100 credit in progress.*

This course can count for fine art or general elective.

**CREDIT:** 0.5

**TYPE:** Regular

**GRADE:** 9-12

**PREREQUISITE:** Introduction to Art and Design

---

## Art Studio I

**FAR116**

Advanced course providing time and space to explore and expand aesthetics and artistic styles in their own work and developing mastery in media that the student feels they need further study and investigation.

This course can count for fine art or general elective.

**CREDIT:** 0.5

**TYPE:** Regular

**GRADE:** 10-12

**NOTE:** This course is designed to prepare students for AP Art A/B.

**PREREQUISITE:** Intermediate Art - FAR114

---

## Art Studio II

**FAR117**

Advanced course providing time and space to explore and expand aesthetics and artistic styles in their own work and developing mastery in media that the student feels they need further study and investigation.

This course can count for fine art or general elective.

**CREDIT:** 0.5

**TYPE:** Regular

**GRADE:** 10-12

**PREREQUISITE:** Art Studio I - FAR 116

---

## Advanced Placement Art A/B



**FAR120/FAR121**

AP Art enables highly motivated art students to perform at the college level. Course guidelines will be given for the work needed to meet and exceed State standards as well as meet and exceed the AP Portfolio task.. AP Art is intended to guide students in the preparation of the AP Art portfolio to be sent for evaluation by the College Board in May. Each portfolio requires submissions in 2 categories: Quality work, and sustained investigation. The sustained investigation is a self guided quest for understanding of an idea that may not have a conclusive answer. in-depth engagement in the process of making art.

**COURSE NOTE:** You are registering for an AP course. Parent and student signatures will be required. Teacher approval based on portfolio review. All students are encouraged to take the exam. The exam fee is \$84.

**CREDIT:** 1.0

**TYPE:** Advanced Placement

**GRADE:** 9-12

---

## Baking and Pastry Arts 1



**HFL116**

This exciting course is the study and application of the fundamentals of baking and pastry. Learn why things work together using ingredients, methods, and proper measurement techniques. Topics include baking terminology, tool and equipment use, formula conversions, functions of ingredients, and the use of proper flours. This course has been developed to provide culinary students with knowledge and skills necessary to produce quality baked goods. This is a course designed to teach basic baking skills. This is a dual credit course so students earning a "B" or better in both semesters of this class will be eligible to receive college credits from Clark College.

This course can be taken for a Fine Arts, CTE or general elective credit.

**CREDIT:** 0.5

**TYPE:** Regular

**GRADE:** 9-12

---

## Fine Arts Woodworking I

**VOC502**

Students gain the opportunity to develop their skills in a specialized area of woodworking such cabinet making, wood turning, bandsaw boxes, evolution of a specific furniture design, period design, and more. Students are prepared to apply technical knowledge and skills to lay out, shape and design as well as assembly and production using a variety of practices and hand/power tools. This class includes safe practices required to use the machine and hand tools needed for your designed project. This class can be taken up to two semesters depending upon individual skill levels. An optional fine arts credit is offered for students who place an emphasis on a creative project through the design and completion of individual pieces of work.

This course can count for CTE, fine art, or general elective.

**CREDIT:** 0.5

**TYPE:** Regular

**GRADE:** 9-12

---

## Fine Arts Woodworking II

**VOC503**

Students continue to gain the opportunity to develop their skills in a specialized area of woodworking such cabinet making, wood turning, bandsaw boxes, evolution of a specific furniture design, period design, and more. Students are prepared to apply technical knowledge and skills to lay out, shape and design as well as assembly and production using a variety of practices and hand/power tools. This class includes safe practices required to use the machine and hand tools needed for your designed project. This class can be taken up to two semesters depending upon individual skill levels. An optional fine arts credit is offered for students who place an emphasis on a creative project through the design and completion of individual pieces of work.

This course can count for CTE, fine art, or general elective.

**CREDIT:** 0.5

**TYPE:** Regular

**GRADE:** 9-12

**PREREQUISITE:** VOC502 - Fine Arts Woodworking I

---

### **Advanced Fine Arts Woodworking I**

**VOC504**

This course is designed to advance the serious woodworking student's opportunity to develop their skills in a specialized area of woodworking which includes collaborating with customers on project ideas, creating designs using CAD software, presentation of designs, development of work orders and job estimations while producing products using traditional tools as well as advanced tools such as a CNC Router. An optional fine arts credit is offered for students who place an emphasis on a creative project through the design and completion of individual pieces of work. This class includes safe practices required to use the machine and hand tools needed for your designed project. This class can be taken up to two semesters depending upon individual skill levels.

This course can count for CTE, fine art, or general elective credit.

**CREDIT:** 0.5

**TYPE:** Regular

**GRADE:** 10-12

**PREREQUISITE:** VOC502 - Fine Arts Woodworking I

---

### **Advanced Fine Arts Woodworking II**

**VOC505**

A continuation of Advanced FA Woodworking. This course is designed to advance the serious woodworking student's opportunity to develop their skills in a specialized area of woodworking which includes collaborating with customers on project ideas, creating designs using CAD software, presentation of designs, development of work orders and job estimations while producing products using traditional tools as well as advanced tools such as a CNC Router. An optional fine arts credit is offered for students who place an emphasis on a creative project through the design and completion of individual pieces of work. This class includes safe practices required to use the machine and hand tools needed for your designed project. This class can be taken up to two semesters depending upon individual skill levels.

This course can count for CTE, fine art, or general elective.

**CREDIT:** 0.5

**TYPE:** Regular

**GRADE:** 10-12

**PREREQUISITE:** VOC504 - Advanced Fine Arts Woodworking I

---

### **Metal Crafts & Production I**

**VOC620**

This project-based course provides experience in the use of basic tools and instruction in methods of employing materials, forms and processes, creatively. Projects include everything from enamel beads and whimsical yard art to practical structures for hanging plants and flowers. Students will explore the use of other materials in the construction of useful objects such as jewelry and sculpture using various metal forms and processes. Students are introduced to safety standards and a variety of precision production careers and skills.

This course can count for CTE, fine art, or general elective credit.

**CREDIT:** 0.5

**TYPE:** Regular

**GRADE:** 9-12

---

### **Metal Crafts & Production II**

**VOC621**

Take your knowledge from Metal Crafts 1 to the next level in this fun, project-based class that transforms metal through various forms and processes. Expand your tool usage and materials experience to create projects using CAD (computer Aided Drafting) software that include everything from sculptures, signs, CNC Plasma cutting pattern making to practical structures. In addition, students will explore the use of materials in the construction of useful objects such as jewelry and sculpture. Safety standards and a variety of precision production careers and skills will be explored.

This course can count for CTE, fine art, or general elective credit.

**CREDIT:** 0.5

**TYPE:** Regular

**GRADE:** 9-12

**PREREQUISITE:** VOC620 - Metal Crafts & Production I

---

### **Digital Photography I**

**VOC705**

Make photography more fun and creative with digital cameras and imaging techniques. Edit, design, and enhance pictures. Students in this class will learn digital photography techniques, art design elements, image manipulation and photo retouching. Basic camera, computer, and scanner skills (along with the principles and elements of design applied to the photographic image) will be emphasized. Students will develop and maintain an electronic portfolio of their work. Employability and leadership skills will be developed through a variety of activities, and the opportunity to participate in FBLA, a student leadership organization.

This course can count for CTE, fine art, or general elective credit.

**CREDIT:** 0.5

**TYPE:** Regular

**GRADE:** 9-12

### **Digital Photography II**

**VOC706**

As a continuation of Digital Photography I, students will develop and use photography skills to work on a variety of professional projects including studio lighting, photojournalism, and preparation of images for print/press and web. This class will also explore advanced Photoshop techniques and industry standards. Students will develop an electronic portfolio as an exit project for this employability skill development. Additional employability and leadership skills will be developed through a variety of activities, including the opportunity to participate in FBLA, a student leadership organization.

This course can count for CTE, fine art, or general elective credit.

**CREDIT:** 0.5

**TYPE:** Regular

**GRADE:** 9-12

**PREREQUISITE:** VOC705 - Digital Photography I

---

### **Yearbook A/B** [\*Promo video to view here!\*](#)

**VOC701/702**

This year-long course is designed to give students experience in the fundamentals of photography, graphic design, publishing, journalistic writing techniques, marketing, and advertising. Students are responsible for developing, proofing, and producing the WHS yearbook to be distributed at the end of the school year. This class is unique in that it requires out of class work. Students are responsible to cover school activities extending outside of the school day. Good attendance is expected, and computer skills are helpful. Employability and leadership skills will be developed through a variety of activities, including participation in FBLA, a student leadership organization.

This course can count for CTE, fine art, or general elective credit.

**CREDIT:** 1.0

**TYPE:** Regular

**GRADE:** 10-12

**PREREQUISITE:** [Application Req.](#) Paper copies available in the Counseling Center.

## Mathematics (recommended pathways)

### Algebra I A/B

**MAT520/521**

Algebra 1 encourages students to make sense of numbers, variables, expressions, equations, and algebraic laws in contextual situations. Students will learn how to identify linear, quadratic, and exponential functions represented in multiple representations. This course prepares students for additional study of mathematics, science, and courses rich in data analysis and statistics in high school and beyond. This course allows students to work with real-life data, situations, and applications.

**COURSE NOTE:** Recommended Equipment: A Scientific Calculator

**CREDIT:** 1.0

**TYPE:** Regular

**GRADE:** 9-12

---

### Integrated Algebra & Geometry A/B

**MAT422/423**

Course will focus on the essential geometry standards and deepen student's understanding of Algebra 1 standards to grow confidence and better prepare them for Algebra 2.

**COURSE NOTE:** Students with a C or below in Algebra should consider forecasting for this course.

**CREDIT:** 1.0

**TYPE:** Regular

**GRADE:** 10

**PREREQUISITE:** MAT520/521-Algebra 1

---

### Accelerated Geometry A/B

**MAT522/523**

Traditional geometry is based on common core content and process standards including: Foundations, reasoning, parallel and perpendicular lines, triangle congruence, properties and attributes of triangles, quadrilaterals, similarity, right triangle trigonometry, transformational geometry, perimeter, circumference, area, volume, spatial reasoning, circles, probability, and polygons. Course will focus on all of the geometry standards and deepen student's understanding of advanced Algebra 1 standards to better prepare students for Algebra 2 and Pre-calculus.

**COURSE NOTE:** Recommended Equipment: A Scientific Calculator

**CREDIT:** 1.0

**TYPE:** Regular

**GRADE:** 9-12

**PREREQUISITE:** MAT520/521-Algebra 1

---

### Algebra II A/B

**MAT701/702**

Recommended Equipment: A TI -83 or TI-84 graphing calculator

Algebra II is based on common core content and process standards including: Foundation for functions, quadratic functions, polynomial functions, exponential and logarithmic functions, sequences and series, trigonometry, probability, and statistics.

**COURSE NOTE:** Scientific Calculator recommended.

**CREDIT:** 1.0

**TYPE:** Regular

**GRADE:** 9-12

**PREREQUISITE:** MAT522/523-Geometry

---

### Bridge to College Mathematics

**MAT706/707**

Bridge to College Mathematics emphasizes modeling with mathematics and the Standards for Mathematical Practice found within Washington K-12 Mathematics Learning Standards. The course is designed to prepare students for entrance into non-calculus pathway introductory college level mathematics courses. It addresses key learning standards for high school including Algebra I, statistics, geometry, and Algebra II standards essential for college- and career-readiness. Including building and interpreting functions (linear, quadratic & exponential), writing, solving and reasoning with equations and inequalities, and summarizing, representing, and interpreting data. Students in this course will build conceptual understanding, reasoning, mathematical skills, and a growth mindset.

**CLASS NOTE:** For seniors who score in Level 2 on the Smarter Balanced 10th grade assessment and are



successful in this course (B or better), the Bridge to College Mathematics course offers guaranteed placement into a college-level course when entering college directly after high school.

**CREDIT:**1.0

**TYPE:** Regular

**GRADE:** 10-12

**PREREQUISITE:** MAT701/702-Algebra II

---

## PreCalculus A/B



**MAT704/705**

Required Equipment: A TI -83 or TI-84 graphing calculator

This course offers side-by-side solutions that show algebraic, visual, and numeric representations of mathematics to support students with multiple learning styles. A graphing approach strengthens students' conceptual understanding and problem-solving skills by the frequent use of graphing calculators. The text incorporates technology, problem-solving strategies, real-life applications, and concept reinforcement to help students develop strong pre-calculus skills. Students in grades 10-12 may be able to earn college credit through Central Washington University.

**COURSE NOTE:** Students who earn a C or better in Algebra II will be prepared to take this course. Graphing calculator required.

**CREDIT:** 1.0

**TYPE:** Regular

**GRADE:** 9-12

---

## Personal Finance A/B



**BUS301/302**

This is an engaging and exciting course where you will learn practical applications of basic financing. Past students say it is one of the most useful courses they have taken. First semester covers banking services, credit, employment basics, and income taxes. Second semester covers independent living, preparing a budget, and automobile ownership. Great employability and leadership skills are taught throughout the course through online activities, computer applications and the opportunity to participate in FBLA, a student leadership organization. Students earning a "B" or better in the class will be eligible to receive college credits from Clark College. This course can count for CTE, 3rd year Math, or general elective.

**COURSE NOTE:** Students that earn a C Algebra I A & B will be prepared to take this course.

**CREDIT:** 1.0

**TYPE:** Regular

**GRADE:** 11-12

**PREREQUISITE:** Students must have passed Algebra 1 A/B.

---

## Applied Mathematics A/B



**VOC401/402**

Applied mathematics is a one-year course that bridges the gap between abstract mathematical concepts and real-world applications. It integrates algebra, geometry and trigonometry while providing ongoing opportunities in critical thinking. Applied Mathematics employs an interactive, workplace-centered approach to teaching the foundations of algebra and geometry. The program features hands-on math labs and cooperative group activities, giving students the opportunity to experience mathematical concepts. It answers the questions, "Why do I have to learn this?" by offering connections and applications to everyday life and emphasizing the use of math in the workplace. This is a dual credit course so students earning a "B" or better in both semesters of this class will be eligible to receive college credits from Lower Columbia College (LCC) or Clark College.

This course can count for CTE, 3rd year Math, or general elective.

**COURSE NOTE:** Clark College credit available to qualifying students.

**CREDIT:** 1.0

**TYPE:** Regular

**GRADE:** 11-12

---

## AP Calculus AB



**MAT110/111**

AP Calculus AB introduces students to calculus topics including limits, derivatives, integrals, and differential equations. Students will learn procedural fluency and applications of these topics..

**COURSE NOTE:** Required Equipment: A TI -83 or TI-84 graphing calculator

You are registering for an AP course. Parent and student signatures will be required.: All students are encouraged to take the exam. Exam Fee: \$84

**CREDIT:** 1.0

**TYPE:** Advanced Placement

**GRADE:** 11-12

**PREREQUISITE:** PreCalculus is required. Students need a C or better in 2nd semester to be fully prepared for this course. Graphing calculator required for the course.

---

## AP Calculus BC



**MAT114/115**

AP Calculus BC covers topics from AP Calculus AB at a more in-depth level. This includes derivatives, integrals, and differential equations. Students will then be introduced to parametric equations, polar coordinates, vector-valued functions, and infinite sequences and series. This class prepares the student for the AP exam in May. You will receive a score for the BC exam, as well as an AB subscore.

**COURSE NOTE:** Required Equipment: A TI -83 or TI-84 graphing calculator

You are registering for an AP course. Parent and student signatures will be required.: All students are encouraged to take the exam. Exam Fee: \$84

**CREDIT:** 1.0

**TYPE:** Advanced Placement

**GRADE:** 11-12

**PREREQUISITE:** MAT110/111-AP Calc AB

Graphing calculator required for the course.

---

## AP Computer Science Principles



**MAT150/151**

The AP Computer Science Principles course is designed to be equivalent to a first-semester introductory college computing course. In this course, students will develop computational thinking vital for success across all disciplines, such as using computational tools to analyze and study data and working with large data sets to analyze, visualize, and draw conclusions from trends. The course is unique in its focus on fostering student creativity. Students are encouraged to apply creative processes when developing computational artifacts and to think creatively while using computer software and other technology to explore questions that interest them. They will also develop effective communication and collaboration skills, working individually and collaboratively to solve problems, and discussing and writing about the importance of these problems and the impacts to their community, society, and the world.

**COURSE NOTE:** You are registering for an AP course. Parent and student signatures will be required.: All students are encouraged to take the exam. Exam Fee: \$84

This course can count for CTE, 3rd year Math, or general elective.

**CREDIT:** 1.0

**TYPE:** Advanced Placement

**GRADE:** 9-12

**PREREQUISITE:** Successfully completed a first-year high school algebra course (Algebra I)

---

## AP Computer Science A



Not offered in the 2023-24 school year.

**MAT152/153**

Introduces students to computer science through programming. Topics in this course include: design of solutions to problems, use of data structures to organize large sets of data, development & implementation of algorithms to process data & discover new information, analysis of potential solutions, and ethical & social implications of computing systems. The course emphasizes object-oriented programming and design using the Java programming language.

**COURSE NOTE:** You are registering for an AP course. Parent and student signatures will be required. All students are encouraged to take the exam. Exam Fee: \$84

This course can count for CTE, 3rd year Math, or general elective.

**CREDIT:** 1.0

**TYPE:** Advanced Placement

**GRADE:** 10-12

## Physical Education/Health

### Family Health

HFL114

This course, required for graduation, provides a better understanding of social, physical, and mental health topics, issues, and concerns. Students will look at their own health habits and lifestyle factors in order to make decisions that will enhance a healthy lifestyle. This course can count for Health, CTE or elective.

CREDIT: 0.5

TYPE: Regular

GRADE: 9-12

### Physical Education

PED101

Attempting one semester of this course is recommended for all other PE courses. It will include instruction in fitness, strength training, team sports, rules, strategies, and an overview of Physical Education at Washougal High School.

CREDIT: 0.5

TYPE: Regular

GRADE: 9-12

### Weight Training I

PED500

The focus of this course will be on learning safety, proper lifting techniques, and skills commonly found in the weight room and exercise clubs. Students will be graded on attendance, participation, record keeping, and improvement. This course may be repeated.

CREDIT: 0.5

TYPE: Regular

GRADE: 9-12

### Weight Training II



PED501

The focus of this course will be on learning safety, proper lifting techniques, and skills commonly found in the weight room and exercise clubs. Students will be graded on attendance, participation, record keeping, and improvement. This course may be repeated. *EWU PHED 152 credit in progress.*

**COURSE NOTE:** Must attempt one semester of Weight Training 1 or instructor's approval.

CREDIT: 0.5

TYPE: Regular

GRADE: 9-12

PREREQUISITE: PED500

### Team Games

PED513

This course will focus on skill development and performance for recreation. The list of games offered will vary depending on availability of facilities, equipment, and weather and class size. There will be a variety of team sports played. This course may be repeated.

CREDIT: 0.5

TYPE: Regular

GRADE: 9-12

### Team Games

PED514

(Forecast for this and PED 513 if you want a full year of Team Games)

This course will focus on skill development and performance for recreation. The list of games offered will vary depending on availability of facilities, equipment, and weather and class size. There will be a variety of team sports played. This course may be repeated.

CREDIT: 0.5

TYPE: Regular

GRADE: 10-12

PREREQUISITE: PED 101

## Science ([recommended science sequences](#))

---

**Engineering A/B****CTE114/115**

Engineering is a course designed to inspire students of all backgrounds to explore the breadth of engineering-related career opportunities. Throughout the course, students explore global engineering challenges and sustainability goals, the impact of engineering, and the variety of career paths available to them. Students will understand the various disciplines within the engineering field and how they apply to today's world and future career opportunities. They'll solve problems in different ways including process solutions, mechanical solutions, electronic solutions, and infrastructure solutions and use a variety of industry tools such as geographical information systems, computer-aided design, and electrical circuit simulation.

This course can count for CTE, 3rd year Lab Science or general elective.

**CREDIT:** 1.0**TYPE:** Regular**GRADE:** 9-12

---

**Physical Science A/B****SCI503/504**

Physical Science explores fundamental scientific principles through real-world applications, emphasizing their impact on communities and daily life. Students will investigate thermodynamics in Earth's systems and its effects on coastal regions, analyze the structure and properties of matter through the study of lightning, and examine energy flow within Earth's systems with a focus on energy grids and community needs. Additionally, the course covers collisions and momentum using traffic data and hands-on labs, as well as the role of electromagnetic radiation in modern technology. Through inquiry-based learning and practical applications, students will develop a deeper understanding of physical science and its relevance to society.

**CREDIT:** 1.0**TYPE:** Regular**GRADE:** 9-12

---

**AP Environmental Science A/B****SCI501/SCI502**

This course requires that students identify and analyze natural and human-made environmental problems, evaluate the relative risks associated with these problems, and examine alternative solutions for resolving or preventing them. Environmental science is interdisciplinary, embracing topics from geology, biology, environmental studies, environmental science, chemistry, and geography.

**Course Notes:** You are registering for an AP course. Parent and student signatures will be required. All students are encouraged to take the exam. Exam Fee: \$84

**CREDIT:** 1.0**TYPE:** Advanced Placement**GRADE:** 11 - 12, 9th with approval

---

**Biology A/B****SCI601/602**

Biology delves into the dynamic relationships between living organisms and their environments, emphasizing real-world connections and human impact. Students will explore ecosystem interactions and their ties to human activity, analyze matter and energy flow through the lens of wildfires, and investigate inheritance and trait variation by examining cancer and prevention strategies. The course also examines natural selection and evolution by studying how urbanization affects wildlife populations and explores common ancestry and speciation through the study of Arctic bears and environmental change. Through hands-on investigations and case studies, students will develop a deeper understanding of biological concepts and their relevance to the world around them.

**Suggested 10th grade course****CREDIT:** 1.0**TYPE:** Regular**GRADE:** 10-12

---

**Earth & Space A/B****SCI100/101**

Earth and Space Science explores the dynamic processes that shape our planet and universe through real-world applications and scientific inquiry. Students will examine molecular processes in Earth's systems by studying recycling, analyze chemical reactions and their role in ocean acidification, and evaluate energy from chemical and nuclear processes by investigating fuels and transportation. The course also delves into how forces within Earth shape its surface, explores the impact of meteor collisions and gravitational forces in space, and uncovers

the mysteries of stars and the Big Bang to understand why stars shine. Through hands-on investigations and critical analysis, students will gain a deeper understanding of Earth, space, and the forces that connect them.

**CREDIT:** 1.0

**TYPE:** Regular

**GRADE:** 11-12

---

## Chemistry A/B



**SCI603/604**

This course provides an introduction to general chemistry with an emphasis on developing problem solving skills. This class is intended for students interested in going to college, especially those pursuing STEM fields. The chemistry associated with everyday life will serve to introduce such concepts as: the scientific method, measurement and observation, atomic and molecular theory, chemical reactions versus physical processes, states of matter, elementary thermodynamics and kinetic, fundamental classes of reaction, organic and biological chemistry, and the application of chemical concepts in industry. In addition to solving problems in the classroom and at home, students will also examine chemical concepts through a series of laboratory experiments and demonstrations. This course implements all the High-School Physical Science *Next Generation Science Standards* (NGSS) in chemistry as required by the State of Washington.

**COURSE NOTE:** Dual credit from the University of Washington Chem 110 is available with additional coursework and university requirements.

**CREDIT:** 1.0

**TYPE:** Regular

**GRADE:** 11-12

---

## AP Biology A/B



**SCI708/709**

This course is a comprehensive survey of general biology that includes biochemistry, cellular biology, molecular genetics and heredity, biotechnology, evolution, and ecology. Inquiry based labs guide the coursework. Students will also learn descriptive statistics and graphing skills specific to science. Emphasis is placed on application of content through the lens of current events. AP Biology is the equivalent of a two-semester introductory biology course.

**COURSE NOTE:** You are registering for an AP course. Parent and student signatures will be required. All students are encouraged to take the exam. Exam Fee: \$84

**CREDIT:** 1.0

**TYPE:** Advanced Placement

**GRADE:** 10-12

---

## AP Physics A/B



**SCI801/802**

This is an algebra-based physics course, covering over a full year what is typically a first semester of college physics. Students cultivate their understanding of physics through inquiry-based investigations as they explore these topics: kinematics, dynamics, circular motion and gravitation, energy, momentum, simple harmonic motion, torque and rotational motion and basic fluid dynamics. Strong algebra skills are required.

**COURSE NOTE:** You are registering for an AP course. Parent and student signatures will be required. All students are encouraged to take the exam. Exam Fee: \$84

**CREDIT:** 1.0

**TYPE:** Advanced Placement

**GRADE:** 11-12

**PREREQUISITE:** MAT701 (Algebra II) or higher.

---

## Intro to Medical Careers & Terminology A/B



**CTE100/101**

This introductory course in health sciences provides an overview and exploration of a variety of health care careers in each of the five Health Care Career Pathways. For each career they study, students examine the main tasks and challenges of professionals in that career, the treatments they administer, and the interaction those

professionals have with other professionals and their patients. This class includes beginning anatomy and physiology, medical terminology, medical ethics, diseases, and disorders. This is a dual credit course so students earning a "B" or better in both Intro to Medical Careers & Terminology A & B classes will be eligible to receive college credits from Clark College.

This course can count for lab science, CTE or general elective.

**CREDIT:** 1.0

**TYPE:** Regular

**GRADE:** 10-12

---

## BioMedical Anatomy & Physiology A/B



**CTE 110/111**

The BioMedical Anatomy and Physiology course is designed to engage students interested in Health Sciences in the study of basic human physiology and the care and maintenance required to support the complex system. Students will examine the interactions of human body systems as they explore identity, communication, power, movement, protection, and homeostasis. Students design experiments, investigate the structures and functions of the human body, and use data to monitor body functions such as muscle movement, reflex and voluntary action, and respiration. Exploring science in action, students build organs and tissues on a skeletal manikin, work through interesting real world cases and often play the role of biomedical professionals to solve medical mysteries. Employability and leadership skills will be developed through a variety of activities, and the opportunity to participate in HOSA, a student leadership organization. This is a dual credit course so students earning a "B" or better in both BioMedical Body Systems A & B classes will be eligible to receive college credits from Clark College.

This course can count for CTE, Lab Science or general elective.

**CREDIT:** 1.0

**TYPE:** Regular

**PREREQUISITES:** Passing grades in Intro to Medical Careers & Terminology A & B and Biology A & B

**COREQUISITES:** If you take this course, you must also take CTE111-BioMedical Anatomy & Physiology B.

## Social Studies

### World History A/B

**SOC108/109**

Students will apply a deeper understanding of social studies concepts on a global scale, and will learn primarily world history and geography, from 1450 to the present. Students explore major themes and developments that shaped history, including human rights, revolution, and democracy, to develop an understanding of the roots of current world issues. Students also consider more deeply the role of economics in shaping the world's events.

**COURSE NOTE:** This course (or AP World History) is a required social studies course for 10th grade.

**CREDIT:** 1.0

**TYPE:** Regular

**GRADE:** 10-12

---

### AP Modern World History A/B



**SOC305/306**

AP Modern World History is a college level course that covers 12,000 years of events with a primary focus on significant events from 1200 AD/CE to the present. Students develop and use the same skills as historians: analyzing primary and secondary sources; developing historical arguments; making historical connections; and utilizing reasoning about comparison, causation, and continuity and change over time. The course provides six themes that students explore throughout the course including: humans and the environment, cultural developments and interactions, governance, economic systems, social interactions and organization, and technology. (Meets 10th grade social studies requirement)

**COURSE NOTE:** You are registering for an AP course. Parent and student signatures will be required. All students are encouraged to take the exam. Exam Fee: \$84

**CREDIT:** 1.0**TYPE:** Advanced Placement**GRADE:** 10-12**United States History A/B****SOC701/702**

This course is a survey of our country's past, culture, and ideals. The focus is on the Constitution, the Civil War, the United States on the global scene, and other historical events through the eyes of the people who experienced them as they struggled to gain equality and reform into the early 1900's.

**COURSE NOTE:** This course (or AP US History) is a required social studies course for 11th grade.

**CREDIT:** 1.0**TYPE:** Regular**GRADE:** 11**AP U.S. History A/B****SOC703/704**

This course explores the same content as United States History, but with the added challenge of a faster-pace and an opportunity to earn college credit while still in high school. We study the people, events and stories that have shaped our nation's history from exploration (1400's) through the modern era (2000's). Historical events are examined through the eyes of the people that experienced them as they struggled to gain equality and reform. (Meets Junior U.S. History requirement)

**COURSE NOTE:** You are registering for an AP course. Parent and student signatures will be required. All students are encouraged to take the exam. Exam Fee: \$84

**CREDIT:** 1.0**TYPE:** Advanced Placement**GRADE:** 11-12**CWI - Contemporary World Issues / Civics A/B****SOC801/802**

This course is designed to help the student learn more about the systems of politics and government in the United States. Students will learn about the Constitution, elections, civil rights and liberties, and politics and the media. Students will then investigate major events that have shaped and continue to affect our society, such as domestic and foreign affairs, economics, federal government, environmental concerns, and current events. (Meets senior social studies requirement)

**CREDIT:** 1.0**TYPE:** Regular**GRADE:** 12**Sports & Performance Psychology****SOC708**

This course explores the relationship between psychology and performance, offering students a comprehensive understanding of how mental processes influence behavior, performance, and well-being in competitive environments. Through the study of psychological theories, cognitive processes, motivation, emotional regulation, and team dynamics, students will gain insight into how top athletes think, behave, and perform. The course will cover a variety of topics including goal setting, stress management, performance preparation, and requirements for college athletics.

This course counts as a general elective course. It may count as elective social studies in special circumstances.

**CREDIT:** 0.5**TYPE:** Regular**GRADE:** 11-12**AP United States Government and Politics A/B****SOC803/804**

(meets CWP requirement for 12th graders)

This course provides an in-depth study of government and politics in the United States. Topics studied include constitutional foundations, political beliefs and behaviors, public policy, civil rights, and civil liberties. Students will develop and strengthen skills in reading and interpreting graphs and charts, vocabulary comprehension, and using evidence to support written and oral statements. *EWU POLI100 credit in Progress.*

**COURSE NOTE:** You are registering for an AP course. Parent and student signatures will be required. All students are encouraged to take the exam. Exam Fee: \$84

**CREDIT:** 1.0**TYPE:** Advanced Placement**GRADE:** 12



This college level course introduces the study of behavior and mental processes. Students are exposed to the principles of major subfields within psychology. Topics include the history, ethics and research methods of psychology, the treatment of disorders and the influences of behavior, sensation, perception, cognition, learning, motivation, emotion, human development and personality. Students considering AP courses should be prepared for a rigorous learning experience. AP students are strongly encouraged to take the AP Exam for the course, providing the opportunity to earn college credit.

This course counts as elective credit. *EWU PSYC 100 credit in progress.*

**COURSE NOTE:** You are registering for an AP course. Parent and student signatures will be required. All students are encouraged to take the exam. Exam Fee: \$84

**CREDIT:** 1.0

**TYPE:** Advanced Placement

**GRADE:** 10-12

## World Languages

### American Sign Language

#### American Sign Language I A/B



**ASL501502**

This is a beginning course in learning the language and culture of the deaf culture in America. Expressive and receptive signing skills, finger spelling, and deaf cultural norms are taught. This is a performance-based class in which students are required to sign in front of others. Students have the opportunity to participate in The American Sign Language Honor Society and earn graduation honors. Students earning a "B" or better in the class will be eligible to receive college credits from Spokane Falls Columbia College.

**COURSE NOTE:** ASL fulfills the World Language requirement in all Washington State Universities and most private colleges. Always check with the university you are considering.

This course can also count for CTE.

**CREDIT:** 1.0

**TYPE:** Regular

**GRADE:** 9-12

#### American Sign Language II A/B



**ASL503/504**

This course focuses on continued development of conversational fluency in American Sign Language, including further training in receptive and expressive skills, finger spelling, vocabulary-building, and grammatical structures. Students begin to develop understanding of the use of classifiers and signing space in ASL. Through assignments both inside and outside of the classroom students will learn about the Deaf Community and Deaf Culture. Students have the opportunity to participate in The American Sign Language Honor Society and earn graduation honors. Students earning a "B" or better in the class will be eligible to receive college credits from Spokane Falls Columbia College.

**COURSE NOTE:** ASL fulfills the World Language requirement in all Washington State Universities and most private colleges. Always check with the university you are considering.

This course can also count for CTE.

**CREDIT:** 1.0

**TYPE:** Regular

**GRADE:** 10-12

**PREREQUISITE:** Students must pass ASL 501/502 or have instructor approval to continue.

#### American Sign Language III A/B



**ASL505/506**

Course includes vocabulary-building and mastery of grammar through rigorous receptive and expressive language activities. ASL skills development with application to complex grammatical structures continues. Topics discussed in ASL include the location and description of items in rooms and buildings, complaints, making suggestions, and making requests. A continued study of the deaf culture nationally and internationally. Students have the opportunity to participate in The American Sign Language Honor Society and earn



graduation honors. Students earning a "B" or better in the class will be eligible to receive college credits from Spokane Falls Columbia College.

**COURSE NOTE:** ASL fulfills the World Language requirement in all Washington State Universities and most private colleges. Always check with the university you are considering.  
This course can also count for CTE.

**CREDIT:** 1.0

**TYPE:** Regular

**GRADE:** 11-12

**PREREQUISITE:** ASL504 - American Sign Language II B **or** ASL503 - American Sign Language II A

---

### American Sign Language IV A/B



**ASL507/508**

ASL IV is designed to build your receptive and expressive language ability in ASL. Instruction includes advanced level vocabulary, the structure of the language, as well as an expanded exposure to the history and culture of the deaf community. An overview of specific terminology used in various settings: educational, medical, legal, and performance. In preparation for interpreting environments, students utilize advanced receptive and expressive skills.

**COURSE NOTE:** ASL fulfills the World Language requirement in all Washington State Universities and most private colleges. Always check with the university you are considering.  
This course can also count for CTE and is a dual credit course with MHCC.

**CREDIT:** 1.0

**TYPE:** Regular

**GRADE:** 12

**PREREQUISITE:** ASL506 - American Sign Language III B **or** ASL505 - American Sign Language III A

---

## Spanish

### Spanish I A/B

**SPA501/502**

Students learn to read, write, comprehend, and speak introductory Spanish language. These skills are emphasized through purposeful conversations in class, communication of personal interests and characteristics, reading and writing activities, early studying of grammar structures, listening tasks and pronunciation practice. Students also examine and discuss cultural aspects of societies in the Spanish-speaking world. Students must attain a C or better in 1st semester to continue to 2nd semester.

**CREDIT:** 1.0

**TYPE:** Regular

**GRADE:** 9-12

---

### Spanish II A/B



**SPA601/602**

Second year Spanish builds on the foundation of skills and knowledge gained in the first year with: a greater emphasis on reading and writing, new verbs and verb tenses, more detailed conversation tasks, a wider vocabulary, group projects, and more depth in grammar structures. Writing and speaking are essential parts of this year's study. Students also compare Spanish-speaking and American cultures.

**PREREQUISITE:** SPA-601/602 C or better recommended

**CREDIT:** 1.0

**TYPE:** Regular

**GRADE:** 10-12

---

### Spanish III A/B



**SPA701/702**

Students in Spanish III learn more complex vocabulary, all verb tenses, and should speak in Spanish for the majority of the class period. They use Spanish with greater independence, while working in pairs and groups on class projects that require them to comprehend, read and write more advanced Spanish.

**CREDIT:** 1.0

**TYPE:** Regular

**GRADE:** 10-12

**PREREQUISITE:** Successful completion of SPA601/602-Spanish II or proficiency test placement.

---

---

## Spanish CWU IV A/B–Literature and Culture



SPA801/802

This course is for Native Spanish speakers and those that have completed Spanish III. The course includes a review of grammar while reading essays, stories and poetry by Hispanic authors. Time is also spent on reading current events in the Spanish news and listening and translating songs.

**CREDIT:** 1.0

**TYPE:** Regular

**GRADE:** 12

**PREREQUISITE:** Successful completion of SPA701/702-Spanish III or proficiency test placement or Native Language speakers.

## ASB - Associated Student Body

### Leadership in Project Management (ASB) A/B

CTE501/502

This class focuses on the skills and attributes needed to be a successful leader. Students will work on various school projects in both leadership and supporting roles, speak before their fellow students, read and report on various topics, and strive to improve their school. This class is restricted to elected ASB and class officers except by instructor permission.

This course can count for CTE or elective.

**CREDIT:** 1.0

**TYPE:** Regular

**GRADE:** 9-12

## By Permission Only

---

### Work Site Learning (WSL)



WSLvaries

Work Site Learning (WSL) is an exciting program that affords students the opportunity to connect the knowledge and skills obtained in the classroom to those needed in the work environment. Students can earn .5 credits for 180 reported paid work or internship hours. To qualify for this class, you must fill out an application, have excellent attendance, be passing all classes, be at least 16 years of age (junior or senior status), have taken at least one CTE class in the same pathway that your job or internship is in, and have the ability to travel to and from your job or internship site independently.

This course can count for general elective or CTE credit.

**COURSE NOTE:** Students earning a “B” or better in the class will be eligible to receive college credits from Clark College. Instructor approval only. Must complete the program application before registering for the class.

**CREDIT:** 0.5

**TYPE:** Regular

**GRADE:** 11-12

### Academic Achievement Center A & B

This class builds students' work completion and organization / study skills. In addition, IEP goal areas are addressed. This class may be repeated.

**CREDIT:** 1.0

**TYPE:** Regular

**GRADE:** 9-12

**PREREQUISITE:** Case manager approval.

### English I - IV

Grade level curriculum adapted for students requiring additional time and exposure to master concepts.

**CREDIT:** 1.0

**TYPE:** Regular

**GRADE:** 9-12

**PREREQUISITE:** By case manager/teacher recommendation only.

### Social Studies I - IV

Goals/Skills Developed: This class is designed to help students develop the skills they will need to transition from youth to adulthood. Units include school and community, grocery shopping, housing, health, banking,

budgeting, housekeeping, using community services, activities, accessing public transportation, leisure activities, success in employment, and responsible citizenship. A modified academic curriculum (math, reading writing, science, and social studies/history is offered as well).

**CREDIT:** 1.0

**TYPE:** Regular

**GRADE:** 9-12

**PREREQUISITE:** Case manager approval.

---

### **Science I - IV**

Grade level curriculum adapted for students requiring additional time and exposure to master concepts.

**CREDIT:**1.0

**TYPE:** Regular

**GRADE:** 9-12

**PREREQUISITE:** Case manager approval.

---

### **Math I - IV**

Grade level curriculum adapted for students requiring additional time and exposure to master concepts.

**CREDIT:** 0.5

**TYPE:** Regular

**GRADE:** 9-12

**PREREQUISITE:** Case manager approval.

---

### **Life Skills A & B**

Goals/Skills Developed: This class is designed to help students develop the skills they will need to transition from youth to adulthood. Units include school and community, grocery shopping, housing, health, banking, budgeting, housekeeping, using community services, activities, accessing public transportation, leisure activities, success in employment, and responsible citizenship. A modified academic curriculum (math, reading writing, science, and social studies/history is offered as well).

**PREREQUISITE:** Case manager approval.

**CREDIT:** 0.5

**TYPE:** Regular

**GRADE:** 9-12