




G MAJOR COMPOSITION

Name _____ Violin

We have been exploring the key of G Major, where G is Do. This week, please write a composition in the key of G Major that makes it clear that G is Do. Use the check list as a guide and include both G Major clues as well as one or more of the musical tools listed below. Have fun and be creative! Be ready to perform your composition and tell your group about it next time at small groups ☺

THE BASICS—please include:



€ **Clef**

 Treble clef for violin;  alto clef for viola;  bass clef for cello and bass



€ **G Major key signature**

F# in key signature to show that G is Do

€ **Time signature**

 ,  , or  in first line with the proper number of beats in each measure

€ **Bar lines**

Bar lines  separating each measure and a double bar line at the end 

€ **Variety of rhythms**

Choose from quarter  , eighth  , half  , whole notes  , and rests  (or other rhythms too)

€ **Length**

At least 8 measures long

G MAJOR CLUES—please also include:


€ **First note** is G, B, or D (a note from the G Major arpeggio) AND **last note** is G (Do) to sound finished

€ Include the notes of the **G Major arpeggio** in a row: G, B, D (or D, B, G)

TOOL BOX—then, choose one or more of the following musical tools to include:

€ Include an entire scale going up (G, A, B, C, D, E, F#, G) or going down (G, F#, E, D, C, B, A, G).

€ Begin with an **anacrusis** (incomplete measure)—make sure the last measure contains the missing beat(s)!

€ Add a **slur** to connect two different notes in the same bow direction 

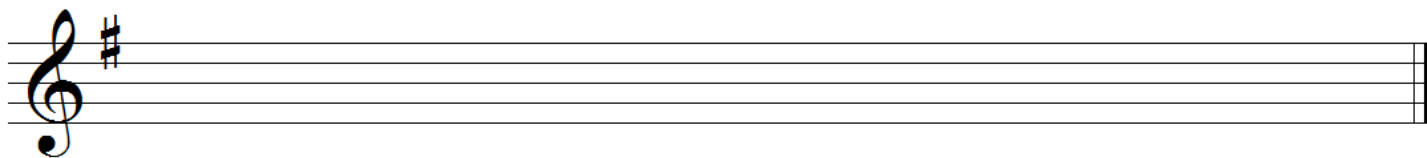
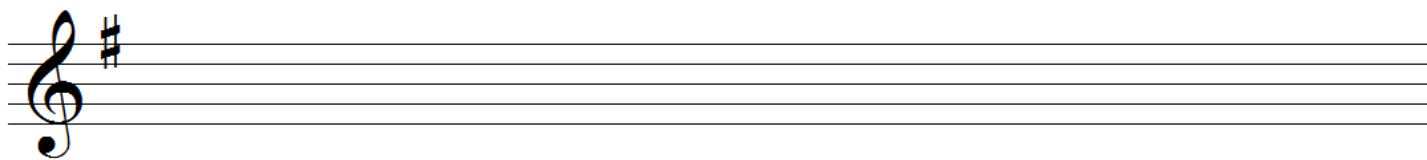
€ Add the **hooked bowing** (slurred staccato/stopped bow) 

€ Include a **tie** to turn two of the same notes into one longer note 

€ Add dynamic markings or a tempo marking 

(title)

By _____

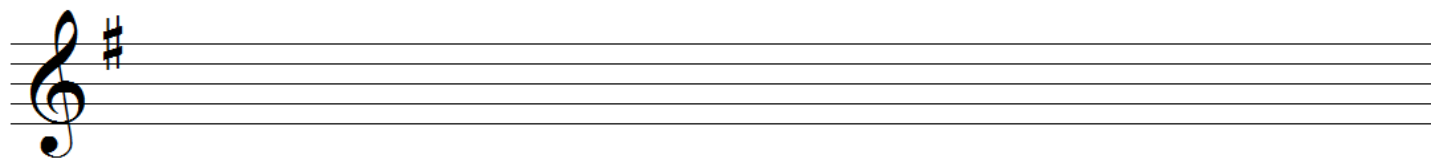
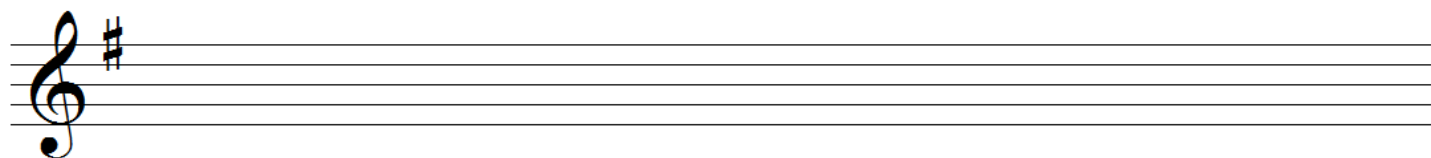
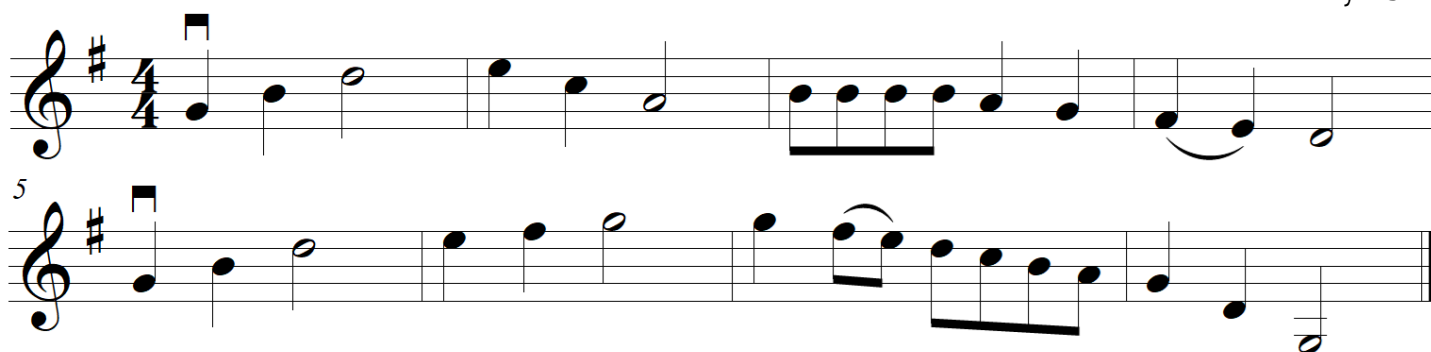


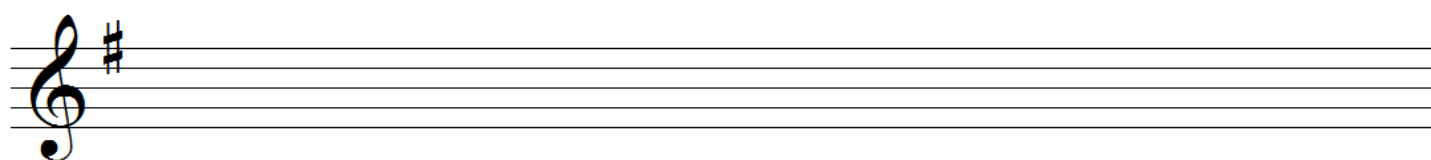
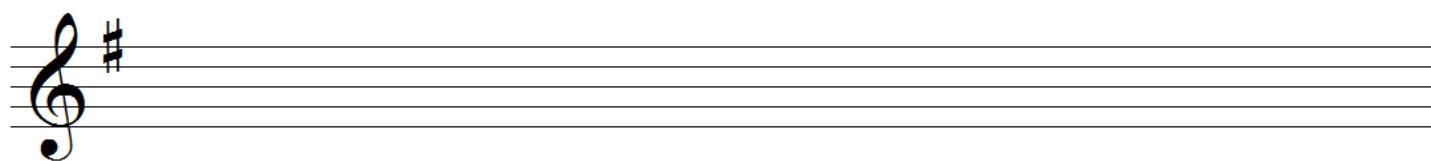
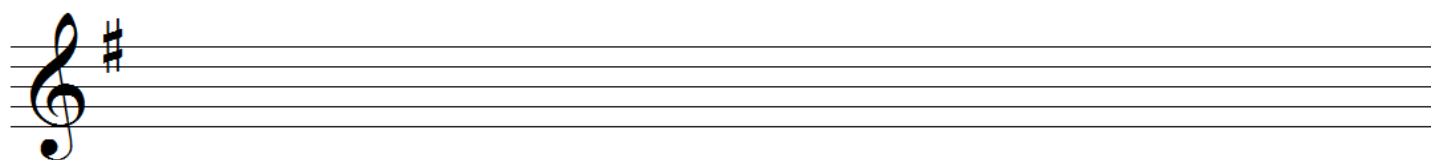
MY EXAMPLE:

In my composition, I decided to add slurs, begin and end on G, include the notes of the G Major arpeggio (G, B, D), and include the G Major scale going down.

Cartwheels

By Ms. T.








G MAJOR COMPOSITION

Name _____ Viola

We have been exploring the key of G Major, where G is *Do*. This week, please write a composition in the key of G Major that makes it clear that G is *Do*. Use the check list as a guide and include both G Major clues as well as one or more of the musical tools listed below. Have fun and be creative! Be ready to perform your composition and tell your group about it next time at small groups ☺

THE BASICS—please include:



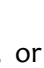
€ **Clef**

 Treble clef for violin;  alto clef for viola;  bass clef for cello and bass

€ **G Major key signature**

F# in key signature to show that G is “do”

€ **Time signature**

 ,  , or  in first line with the proper number of beats in each measure

€ **Bar lines**

Bar lines | separating each measure and a double bar line at the end ||

€ **Variety of rhythms**

Choose from quarter  , eighth  , half  , whole notes  , and rests  (or other rhythms too)

€ **Length**

At least 8 measures long

G MAJOR CLUES—please also include:


€ **First note** is G, B, or D (a note from the G Major arpeggio) AND **last note** is G (*Do*) to sound finished

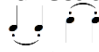
€ Include the notes of the **G Major arpeggio** in a row: G, B, D (or D, B, G)


TOOL BOX—then, choose one or more of the following musical tools to include:

€ Include an entire scale going up (G, A, B, C, D, E, F#, G) or going down (G, F#, E, D, C, B, A, G).

€ Begin with an **anacrusis** (incomplete measure)—make sure the last measure contains the missing beat(s)!

€ Add a **slur** to connect two different notes in the same bow direction 

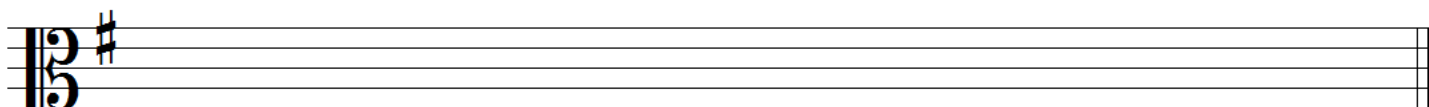
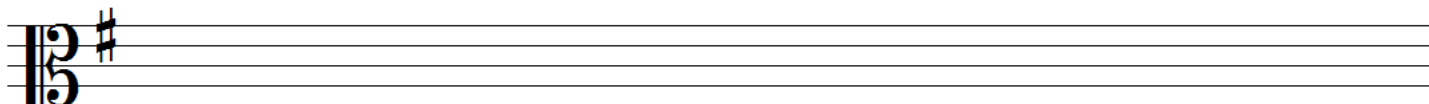
€ Add the **hooked bowing** (slurred staccato/stopped bow) 

€ Include a **tie** to turn two of the same notes into one longer note 

€ Add dynamic markings or a tempo marking

(title)

By _____



MY EXAMPLE:

In my composition, I decided to add slurs, begin and end on G, include the notes of the G Major arpeggio (G, B, D), and include the G Major scale going down.

Cartwheels

By Ms. T.

5

5

G MAJOR COMPOSITION




Name _____

Cello/Bass

We have been exploring the key of G Major, where G is *Do*. This week, please write a composition in the key of G Major that makes it clear that G is *Do*. Use the check list as a guide and include both G Major clues as well as one or more of the musical tools listed below. Have fun and be creative! Be ready to perform your composition and tell your group about it next time at small groups ☺

THE BASICS—please include:



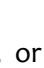
€ **Clef**

 Treble clef for violin;  alto clef for viola;  bass clef for cello and bass



€ **G Major key signature**

F# in key signature to show that G is “do”

€ **Time signature**

 ,  , or  in first line with the proper number of beats in each measure

€ **Bar lines**

Bar lines  separating each measure and a double bar line at the end 

€ **Variety of rhythms**

Choose from quarter  , eighth  , half  , whole notes  , and rests 
(or other rhythms too)

€ **Length**

At least 8 measures long

G MAJOR CLUES—please also include:


€ **First note** is G, B, or D (a note from the G Major arpeggio) AND **last note** is G (*Do*) to sound finished


€ Include the notes of the **G Major arpeggio** in a row: G, B, D (or D, B, G)

TOOL BOX—then, choose one or more of the following musical tools to include:

€ Include an entire scale going up (G, A, B, C, D, E, F#, G) or going down (G, F#, E, D, C, B, A, G).

€ Begin with an **anacrusis** (incomplete measure)—make sure the last measure contains the missing beat(s)!

€ Add a **slur** to connect two different notes in the same bow direction 

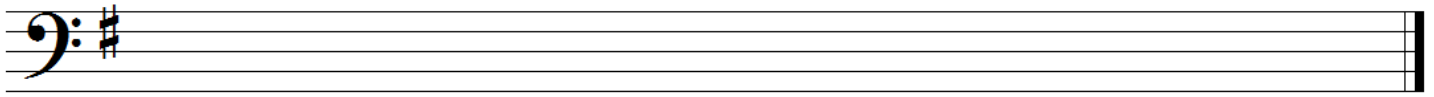
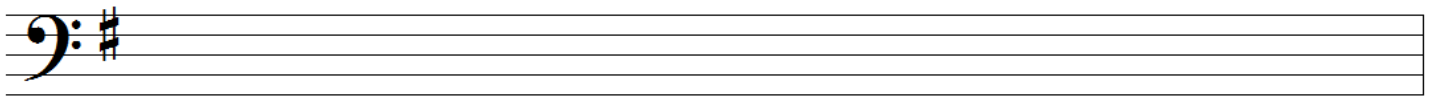
€ Add the **hooked bowing** (slurred staccato/stopped bow) 

€ Include a **tie** to turn two of the same notes into one longer note 

€ Add dynamic markings or a tempo marking

(title)

By _____



MY EXAMPLE:

In my composition, I decided to add slurs, begin and end on G, include the notes of the G Major arpeggio (G, B, D), and include the G Major scale going down.

Cartwheels

By Ms. T.

