

SHELTER #5: DAILY ASSIGNMENTS

ASSIGNMENTS FOR THESE DATES: 11/7 & 11/8

PROJECT MANAGER: Sarah Marshall make sure the studs all bow the same way if they biw (6th)

2ND PERIOD PROJECT LEAD Owen Lepre

7TH PERIOD PROJECT LEAD: Aidan Menninger

2ND PERIOD	6TH PERIOD		7TH PERIOD
Maguire Dickerhoof Owen Lepre Kaitlyn Shepro Eli Walkin	Alexander Christian Armstrong Davidson Caleb Evans Ben Forkner Kian Heiken Jack Herman Nick Kellogg	Sarah Marshall Gino Meneghlli Sam Navrkal Oliver Norris Wyatt Seaders Mikey Terry	Aidan Menninger Jackson Smith Jamison Turpin

GENERAL NOTES: EVERYONE READ THESE:	
NOTES FROM SARAH:	<p>The cut floor joists are on top of the plywood closest to the garage, there are 12 of them. The uncut ones are on the floor by the other pile of plywood (there are 5 I believe?).</p> <p>The rim joists are on the ground next to the piles of plywood.</p> <p>At the bottom of the document is an attempt to explain the markings we will use for joists as well as the top and bottom plates for the walls.</p> <p>This year's plans for the subfloor include WAY more blocking. The printed version is in the front of the binder, the online copy is on the tiny home website</p> <p>Make sure to keep track of your proficiency tracklist.</p>
NOTES FROM OWEN:	<p>Some of the floor joists were off by over an $\frac{1}{8}$" so we set a stop block on the chop saw for the floor joists to make them all the exact same (the stop block is still there).</p> <p>Did not get around to marking the rim joists. I would have Kirsh check that the marks are all correct when completed.</p> <p>All the floor joists are cut to length and are on top of the plywood closest to the forklift.</p> <p>Pretty sure there are three uncut spares by the other plie of plywood.</p>
NOTES FROM AIDAN:	<p>The rimjoist from 6th period wasn't marked, so we started marking both of them. Both rimjoists are clamped together outside for easy marking. We didn't get to double checking any of the floor joists, so that needs to be done.</p>
NOTES FROM KIRSCH:	

SHELTER #5: DAILY ASSIGNMENTS

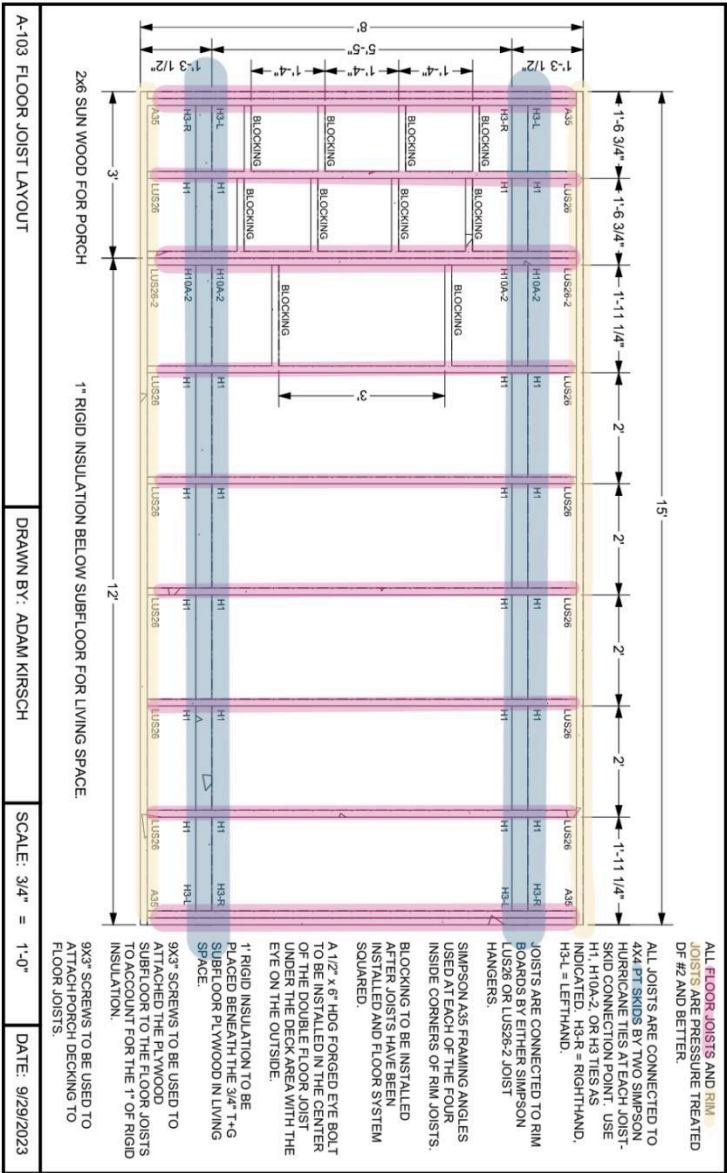
Proficiencies available for creation	1. Cut a board to the required length using the chop saw. 2. Install a joist hanger, bracket, or hurricane tie. 3. Use the framing nail gun to connect framing members. 6. Secure some floor or roof sheathing to the structure. 8. Secure some framing members together using screws. 9. Check that something is square (a wall prior to placement, the floor, an opening, etc...). 17. Teach another person some required skill that they don't already know.
---------------------------------------------	-----------------------------------------------------------------------------------------------------------------------------------------------------------------------------------------------------------------------------------------------------------------------------------------------------------------------------------------------------------------------------------------------------------------------------------------------------------------------------------

	6TH PERIOD WORK PRIORITIES 11/8 (WORK TO DO DURING THE PERIOD)	STATUS AT THE END OF PERIOD
1	Mark and double check the markings of the rim joists. (top priority)	Complete
2	Fill the new work cabinet with things from the old work chest and from the finishing room.	Complete
3	Cut the studs for the side walls (use stop block. Make sure the wood we want to keep is between the stop block and the blade)	Complete
	Make a binder for the proficiency checklist	Complete
4	Cut top and bottom plates for the side walls	Complete
4	Attach the rim joists to the floor joists	
5	Start on hangers.	
6	Square the frame (make sure everyone sees/understands this step)	

	2ND PERIOD WORK PRIORITIES (WORK TO DO DURING THE PERIOD) 2nd period does not have to put tools away, sixth period will clean	STATUS AT THE END OF PERIOD
1	Finish marking the rim joists. Have a second person double check these measurements.	Did not complete
1.1	Double check cut floor joists	Complete and recut all are same
2	square the joists	Complete

SHELTER #5: DAILY ASSIGNMENTS

3		
4	attach enough hangers to keep it steady AND so everyone in the class period can attach one (this is part of the proficiency track list). Then move on to blocking, 6th will finish hangers	Did not complete
5	blocking for the joists	Did not complete

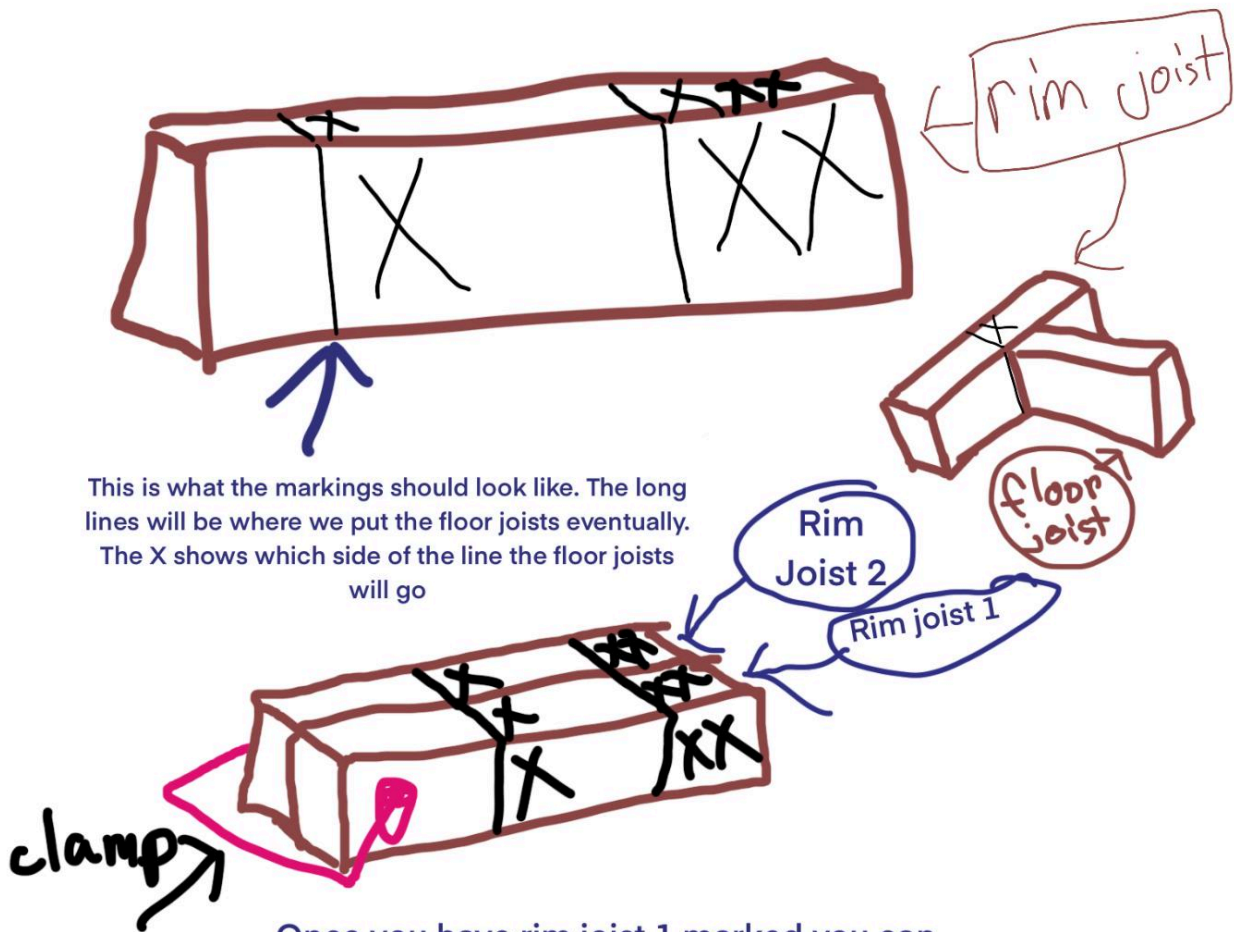


	7TH PERIOD WORK PRIORITIES 11/9 (WORK TO DO DURING THE PERIOD)	STATUS AT THE END OF PERIOD
1	Doubly check that all rim joists are the same length to an eighth of an inch	Good, already cut rim joist was not to

SHELTER #5: DAILY ASSIGNMENTS

		dimension, both cut to 15 ft.
2	Cut the rim joist/s to 15 feet	Completed by Jackson
3	Double check the markings of the rim joist. Transfer these markings to the other rim joist as well by clamping the two joists together and using a speed square to extend the lines. (I tried to make a drawing down below but ask Kirsch for help)	Drew around half of the markings on both boards.
4	If you have time start attaching the floor joists to the rim joists.	Not started
5		

SHELTER #5: DAILY ASSIGNMENTS



Once you have rim joist 1 marked you can clamp it to rim joist 2. Use a speed square To extend the line from time joist 1 to rim joist 2. This ensures that the limes are the same on both, making attaching the floor joists and blocking later easier